



# iPad Mini CDMA SIM Card Tray Replacement

Prereq for removing the logic board.

Written By: Walter Galan



---

## INTRODUCTION

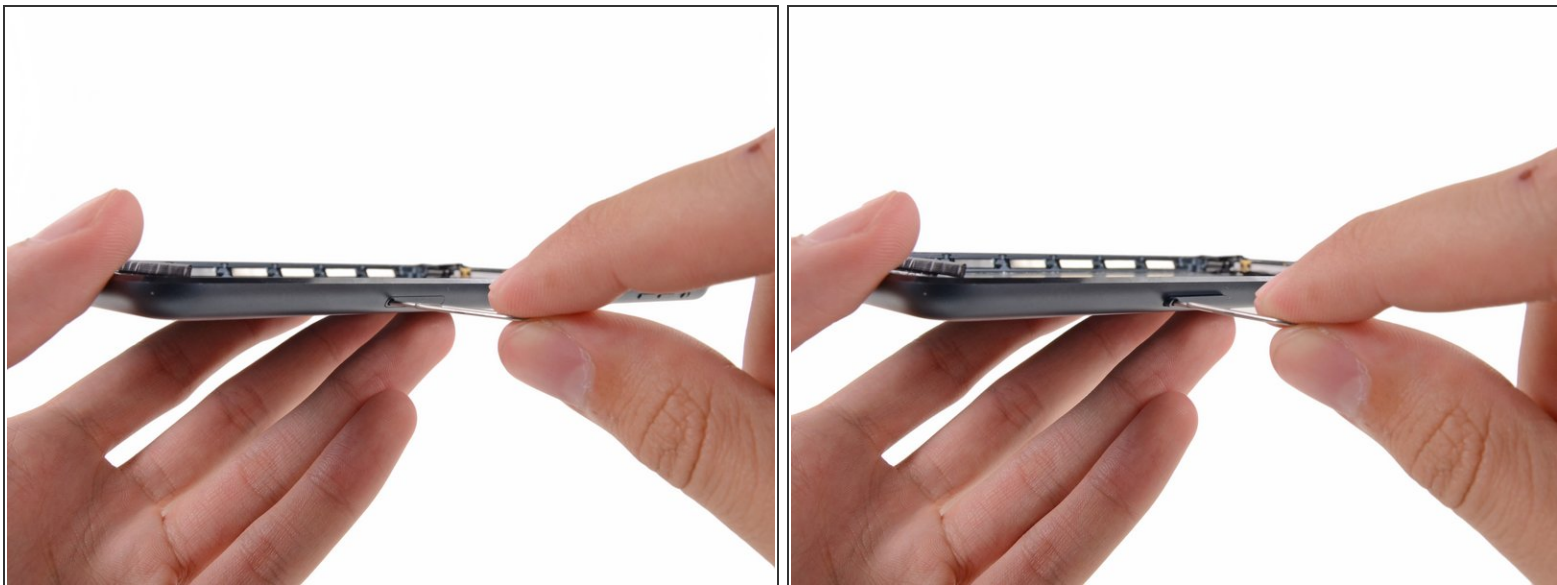
Prereq for removing the logic board.



### TOOLS:

- [SIM Card Eject Tool](#) (1)
-

## Step 1 — SIM Card Tray



- Use a SIM card eject tool or an uncoiled paperclip to eject the SIM card tray.

## Step 2



- Use a fingernail to pull the SIM card tray out from the iPad.
- Remove the SIM card tray.

To reassemble your device, follow these instructions in reverse order.