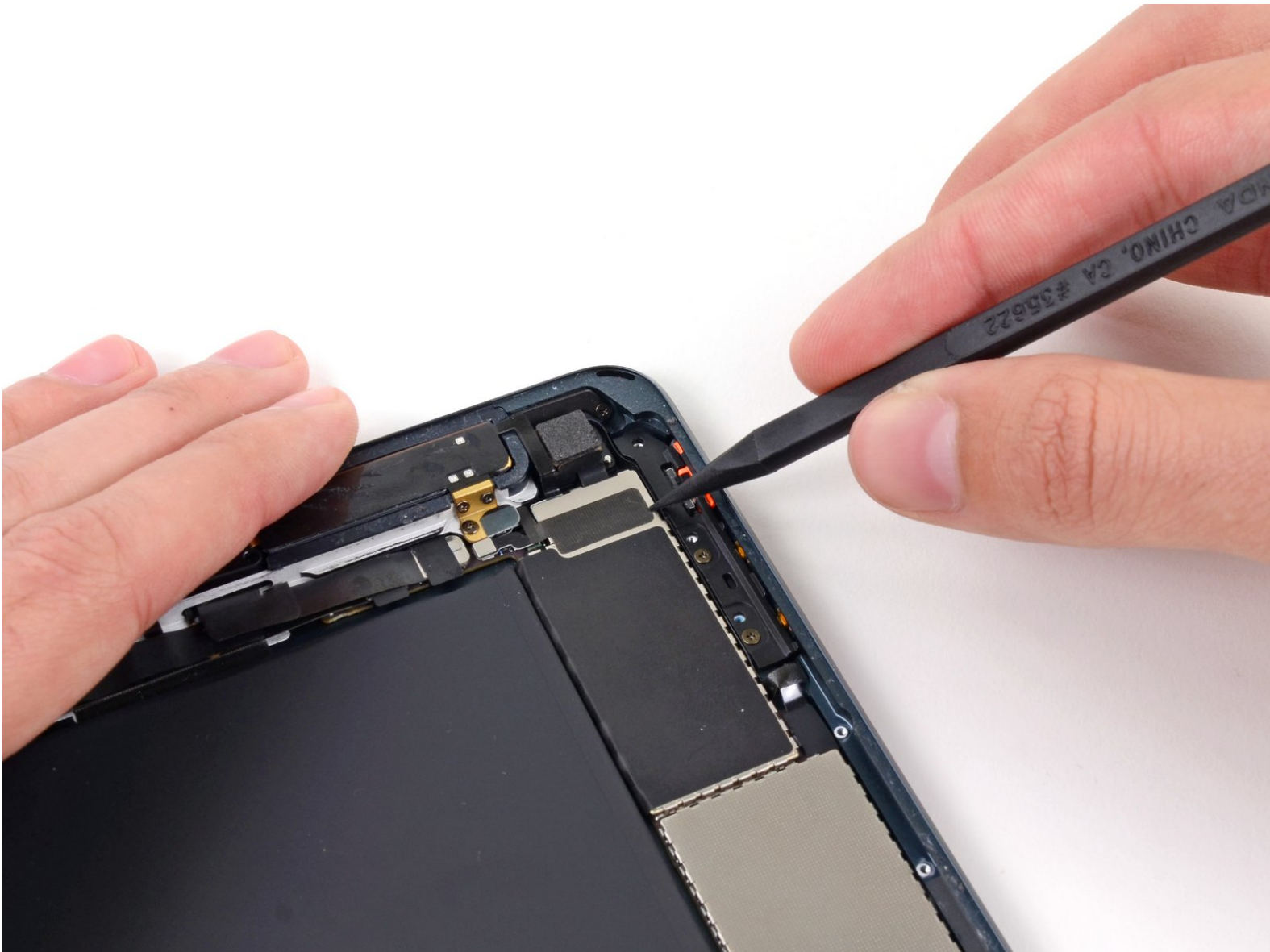




# iPad Mini CDMA Small Metal Bracket Replacement

Prereq for removing speakers with battery.

Written By: Walter Galan



---

# INTRODUCTION

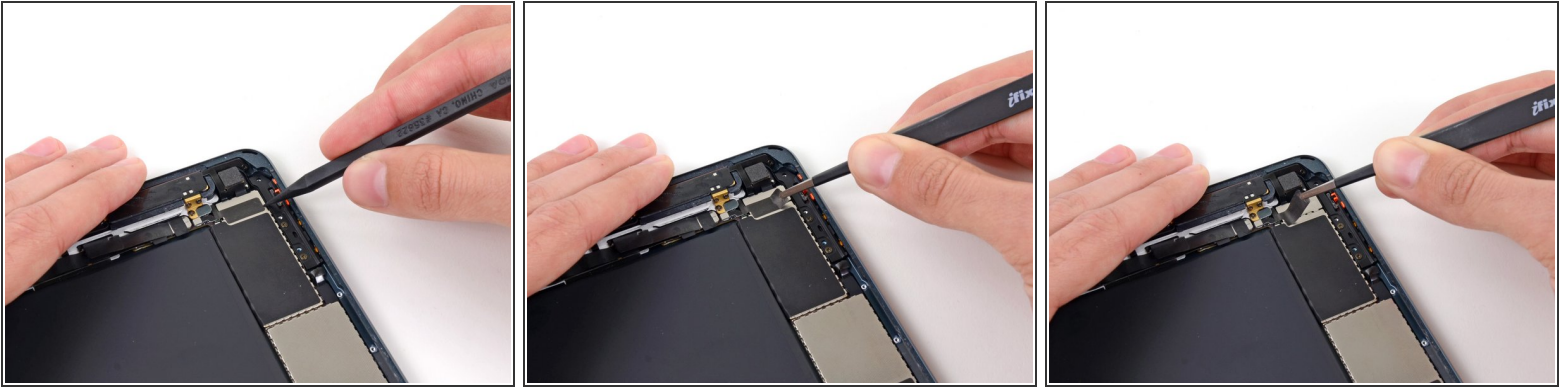
Prereq for removing speakers with battery.



## TOOLS:

- [Spudger](#) (1)
  - [iFixit Opening Tools](#) (1)
  - [Tweezers](#) (1)
-

## Step 1 — Small Metal Bracket



- Use the tip of a spudger to start peeling up the right side of the black tape covering the small metal bracket.
- Peel the tape up the rest of the way with tweezers, and remove it from the bracket.

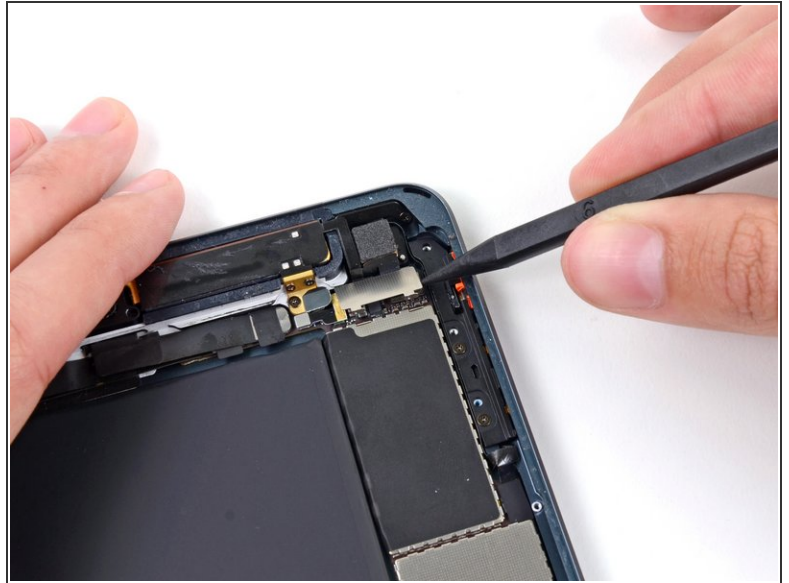
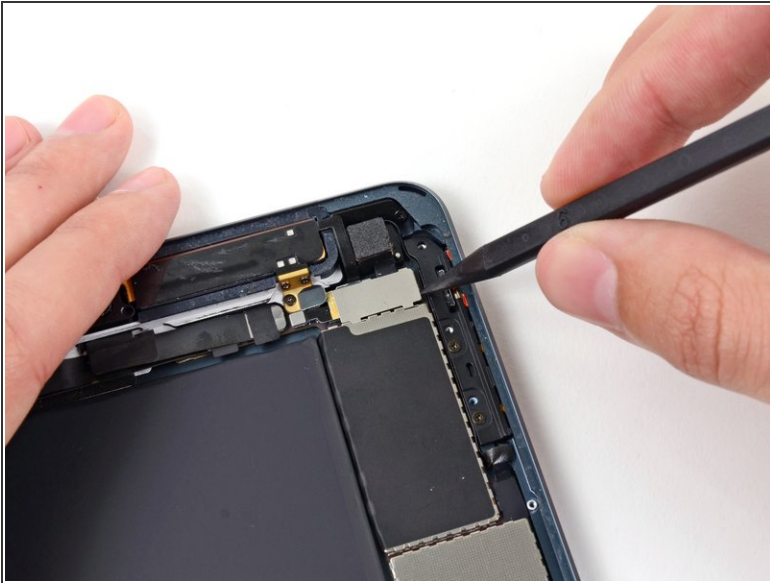
## Step 2



- Use a plastic opening tool to push the metal bracket slightly to the left.

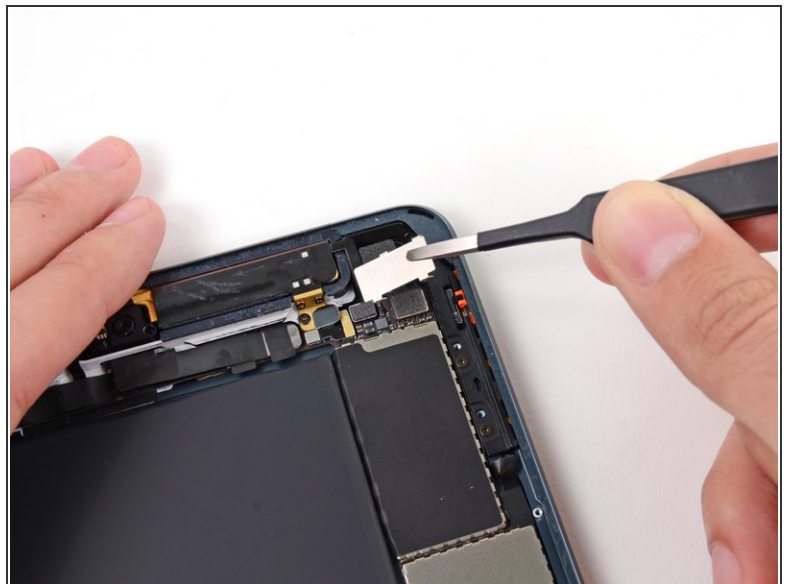
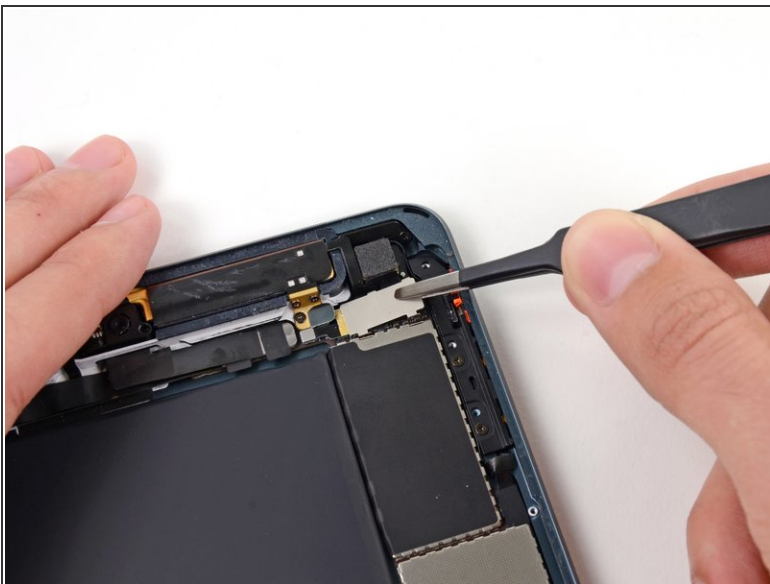


### Step 3



- Use the tip of a spudger to lift up the lower side of the metal bracket.

### Step 4



- Grab the bracket with tweezers and lift it up out of the iPad.
- ☑ During reassembly, hook the top edge of the plate in place first, then lower the bottom into its slots.

To reassemble your device, follow these instructions in reverse order.