



iPad Mini CDMA Speakers Replacement

Prereq for removing the logic board. Battery is out.

Written By: Walter Galan



INTRODUCTION

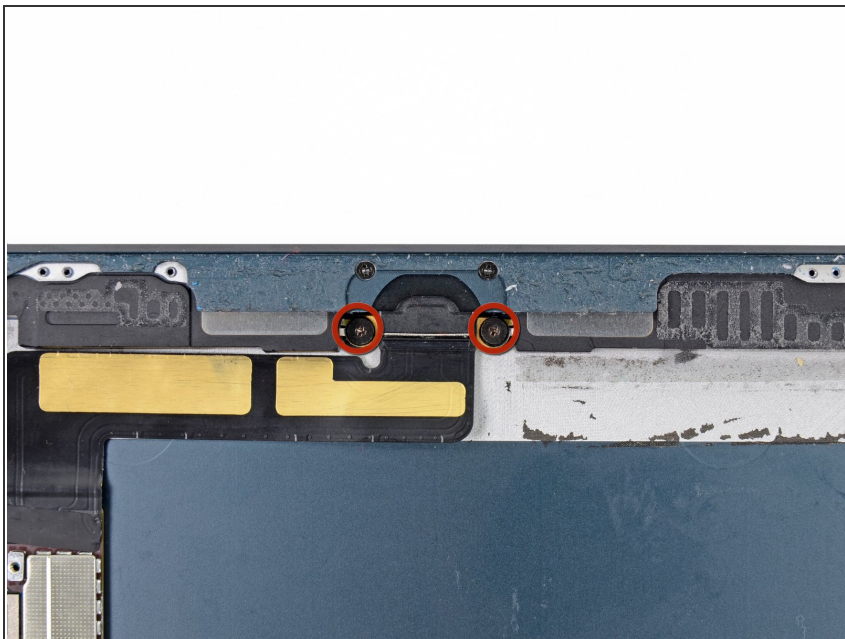
Prereq for removing the logic board. Battery is out.



TOOLS:

- [Spudger](#) (1)
 - [Phillips #00 Screwdriver](#) (1)
-

Step 1 — Speakers



- Remove two 1.4 mm #00 Phillips screws securing the left and right speakers to the rear case.

Step 2



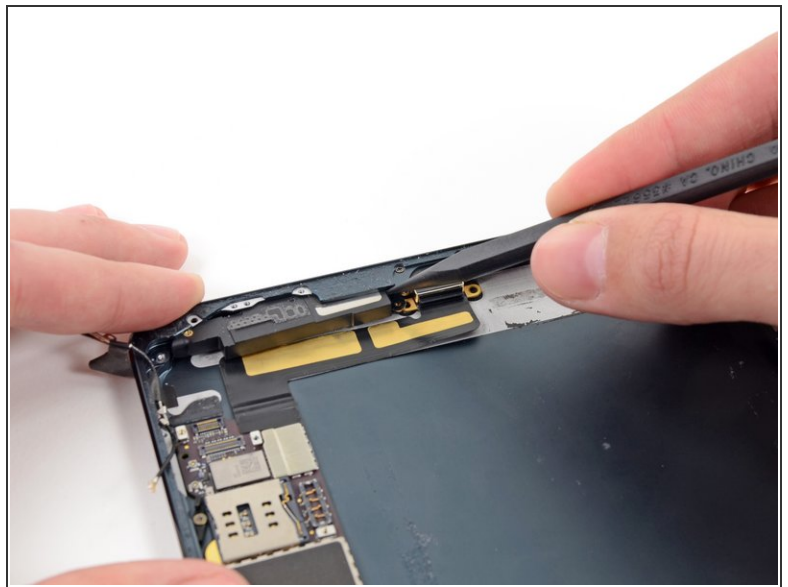
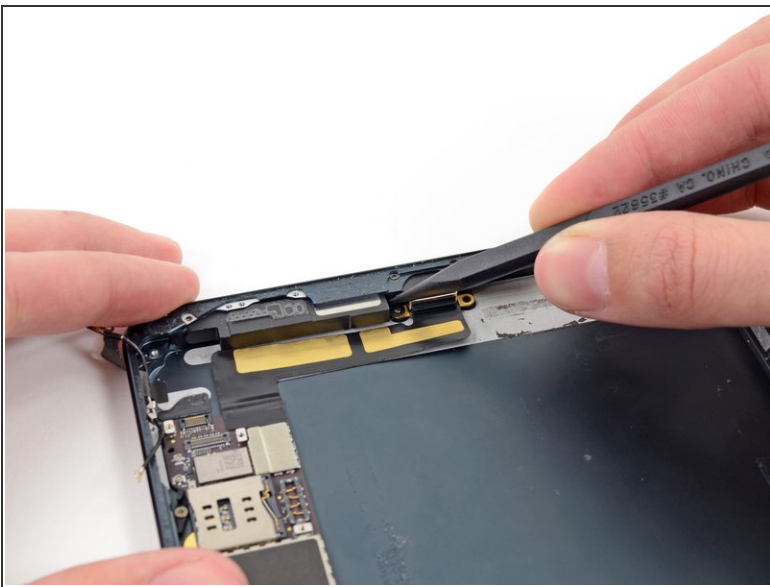
- Insert the tip of a spudger into the gap between the left speaker and the bottom left side of the rear case.
- Pry around the bottom of the speaker, sliding it out from its recess in the rear case.

Step 3



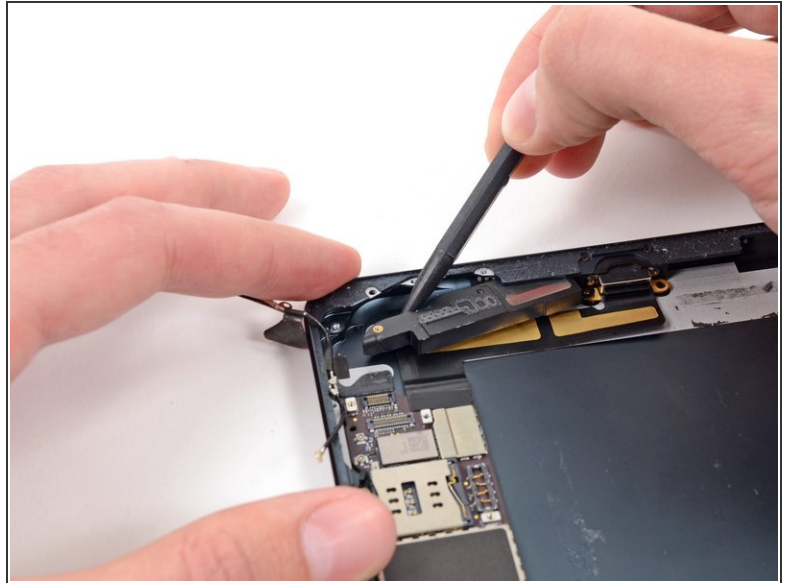
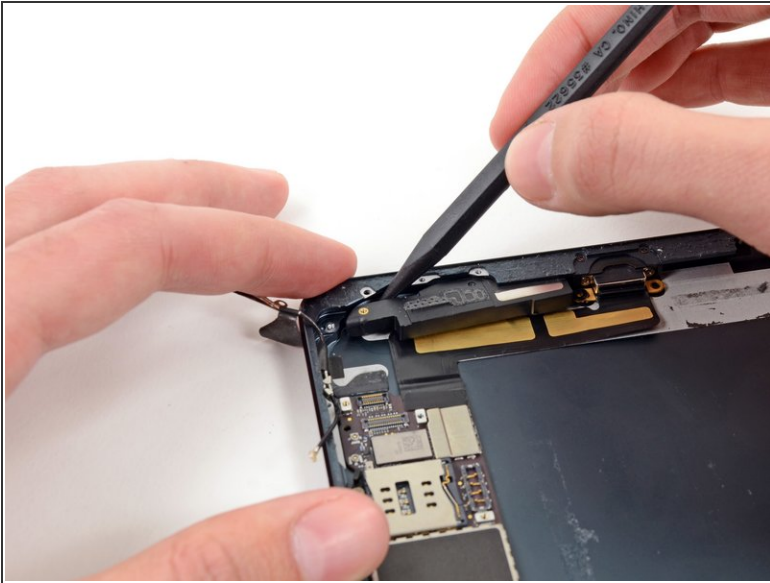
- Once enough of the speaker is exposed, grasp it and pull it away from its recess in the rear case.
- Remove the left speaker from the iPad.

Step 4



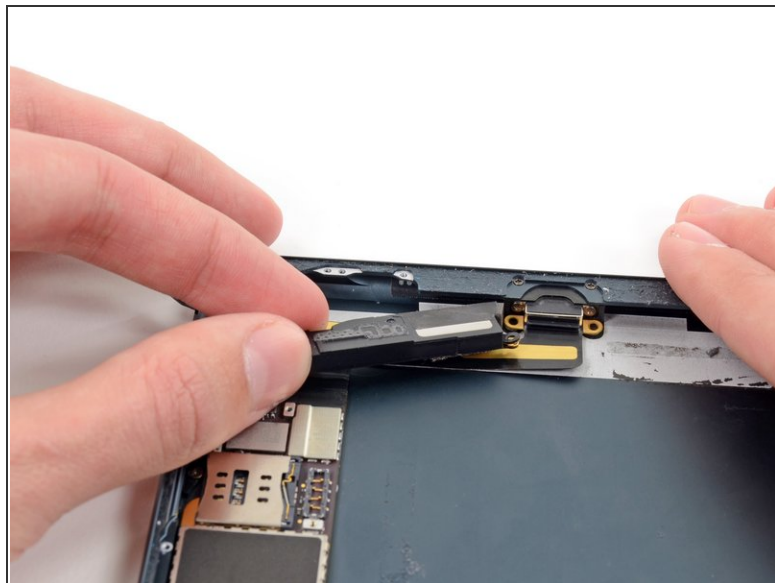
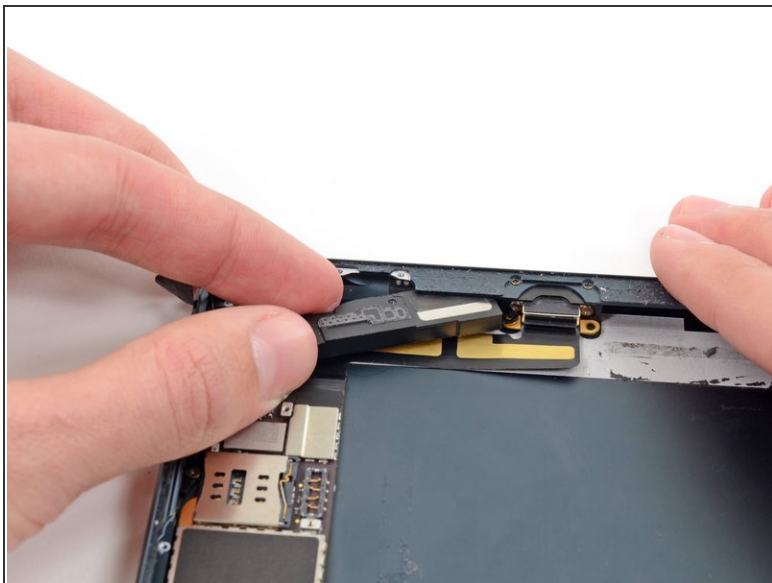
- Use the tip of a spudger to slide the right speaker slightly toward the outside of the iPad.

Step 5



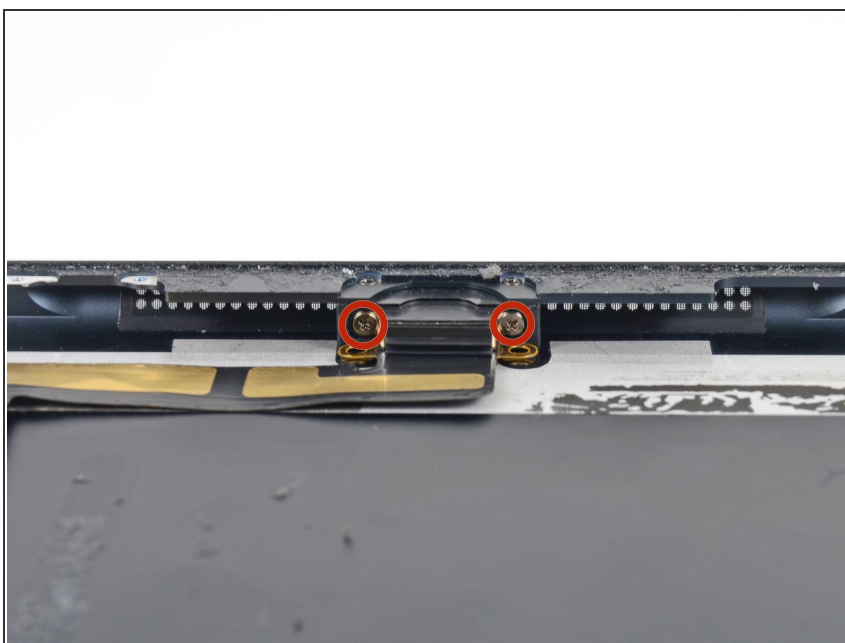
- Insert the tip of a spudger into the gap between the right speaker and the bottom right corner of the case.
- Pry the speaker out from its recess in the rear case.

Step 6



- Once enough of the speaker is exposed, grasp it and pull it away from its slot in the rear case.
- Remove the right speaker from the iPad.

Step 7



- Remove two 2.8 mm Phillips #00 screws from the base of the Lightning connector.

To reassemble your device, follow these instructions in reverse order.