



iPad Mini Wi-Fi Front Facing Camera Cable Replacement

prereq to disconnect the front facing camera without removing it.

Written By: Andrew Optimus Goldheart





TOOLS:

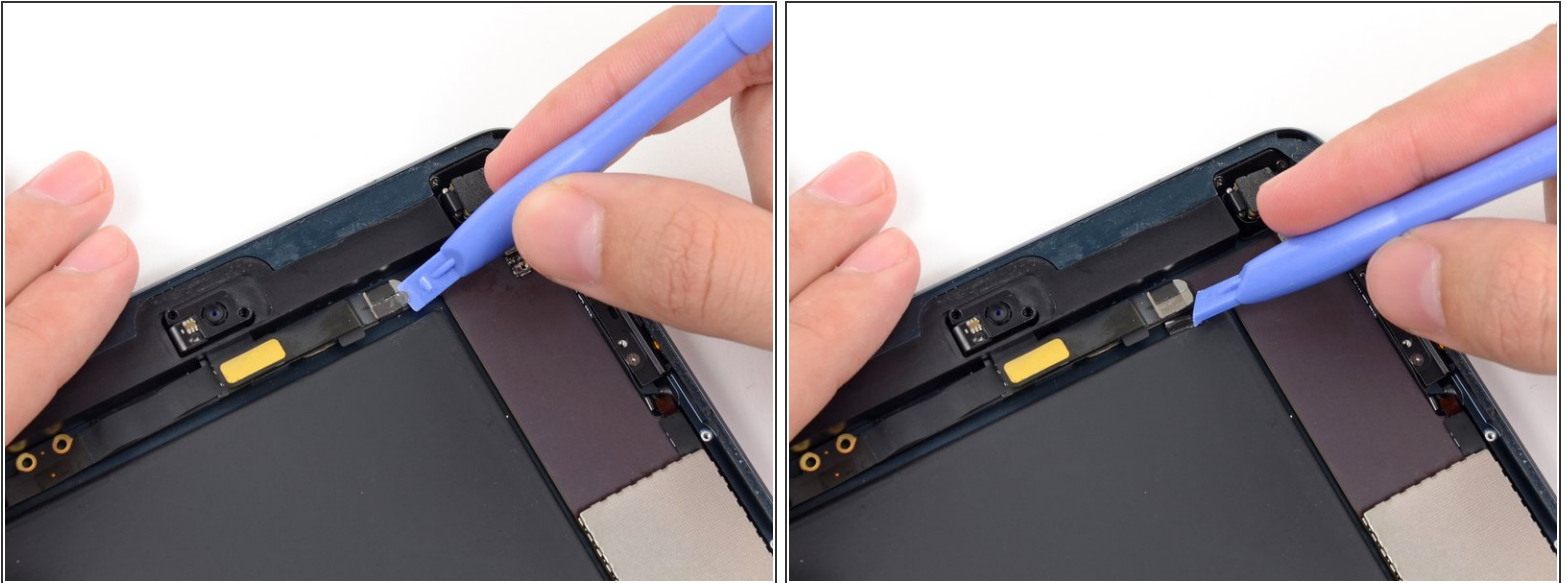
- [ESD Safe Tweezers Blunt Nose](#) (1)
- [iFixit Opening Tools](#) (1)

Step 1 — Front Facing Camera Cable



- Use a pair of tweezers to peel up and remove the small piece of tape covering the front-facing camera cable connector.

Step 2



- i** The front-facing camera cable connector is secured with pieces of tape that wrap up around the sides of the cable and are fastened to two small metal plates.
- Use a plastic opening tool to gently pry the lower metal plate up from the front-facing camera cable connector.
 - Being careful not to break the plate or the tape attached to it, pry it up and fold it away from the front-facing camera cable connector.

Step 3



- Gently pry the second metal plate up from the front-facing camera cable connector.
- Again, carefully pry the plate up and away from the front-facing camera cable connector.

Step 4



- Use a plastic opening tool to pry the front-facing camera cable's connector up from its socket on the logic board.

Step 5



- Gently fold the front-facing camera cable upwards (roughly at a 90-degree angle), exposing the bottom side of it.

To reassemble your device, follow these instructions in reverse order.