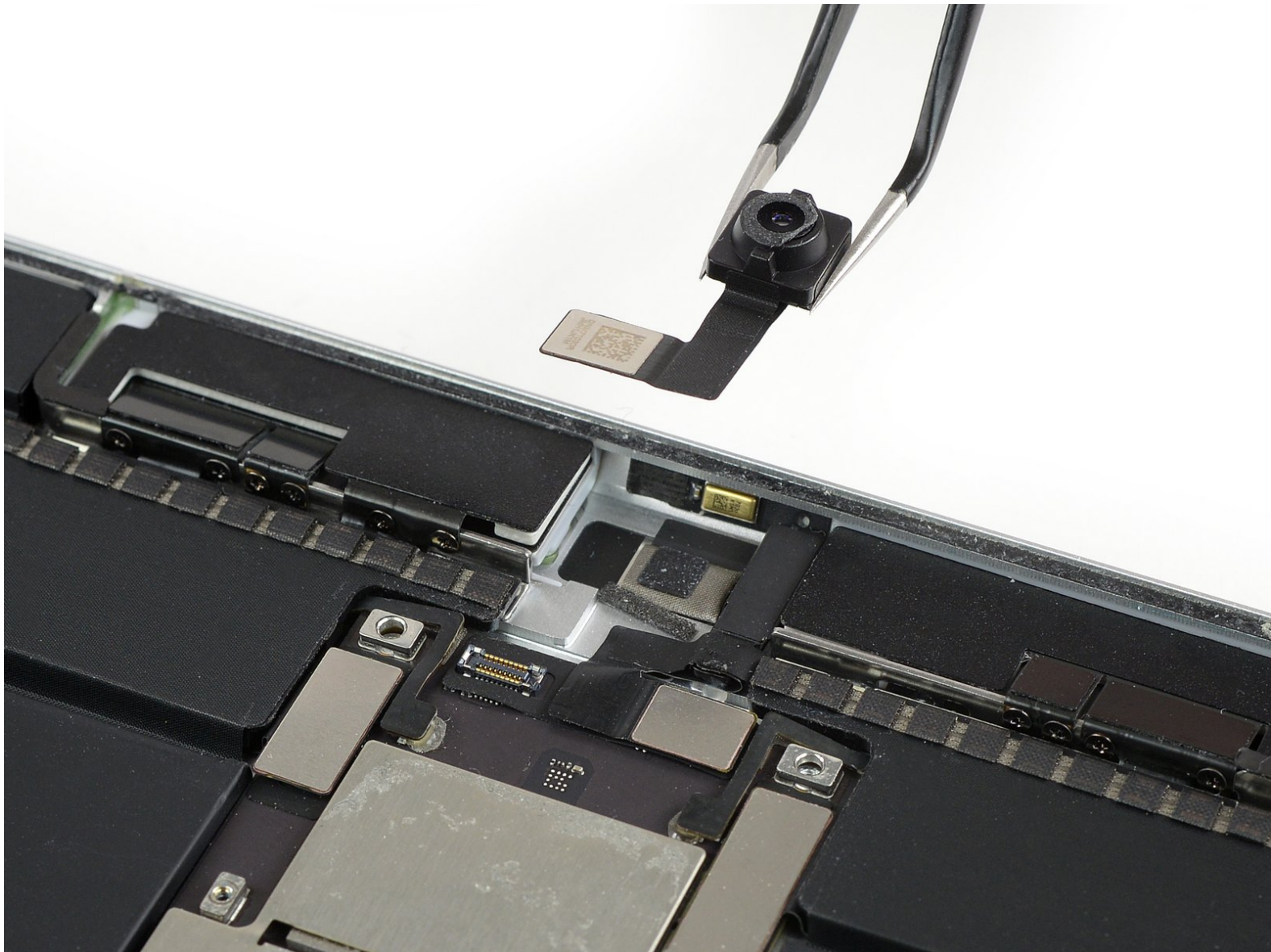




# iPad Pro 10.5" Front-Facing Camera Replacement

How to remove and replace the front-facing camera in your iPad Pro 10.5".

Written By: Dominik Schnabelrauch



# INTRODUCTION

Use this guide to remove and replace the front-facing camera in your iPad Pro 10.5".



## TOOLS:

- [Suction Handle](#) (1)
- [iFixit Opening Picks set of 6](#) (1)
- [Battery Blocker](#) (1)
- [SIM Card Eject Tool](#) (1)
- [iOpener](#) (1)
- [Tweezers](#) (1)
- [Phillips #00 Screwdriver](#) (1)
- [Spudger](#) (1)
- [Isopropyl Alcohol](#) (1)



## PARTS:

- [iPad Pro 10.5" Adhesive Strips](#) (1)

## Step 1 — Display Assembly



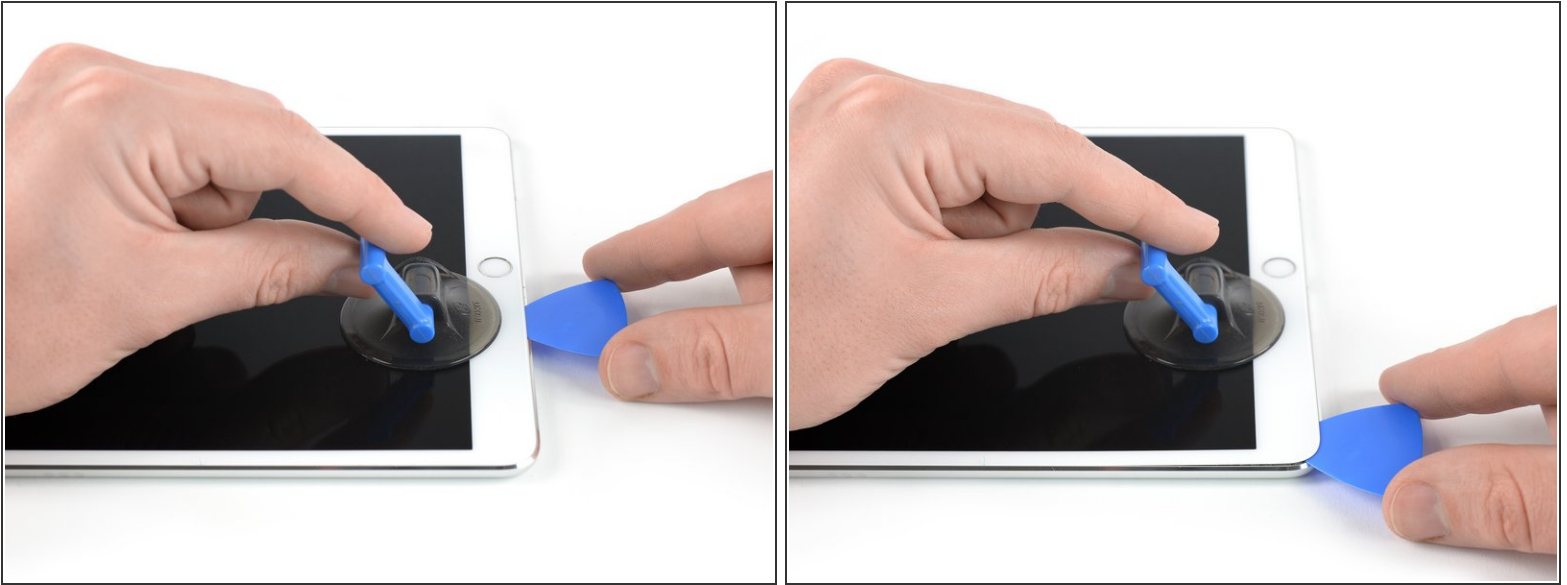
- i** Strong adhesive holds the screen in place. In order to separate it, you'll first need to heat and soften the adhesive using an iOpener, hair dryer, or heat gun.
- You may need to reapply heat repeatedly throughout this process to prevent the adhesive from cooling and hardening.
  - [Prepare an iOpener](#) and place it on the bottom edge of the iPad's screen for about two minutes.

## Step 2



- ⓘ If your iPad's screen is badly cracked, wear skin and eye protection. Cover the screen with a smooth layer of clear packing tape to contain glass shards and help the suction cup adhere. Alternatively, use a strong piece of tape (such as duct tape) and [fold it into a handle](#).
- Place a suction cup next to the iPad's home button and press down to create a seal.
- ⓘ To get the most leverage, place the suction cup as close to the edge as possible without going past the edge of the display.
- Firmly pull up on the suction cup to create a small gap between the front panel and the rear case.
- ⚠ Don't pull too hard, or you may shatter the glass. If necessary, apply more heat to further soften the adhesive.
- Once you've opened a sufficient gap, insert an opening pick into the gap.

## Step 3



- Slice through the adhesive under the screen by sliding the pick along the edge of the display, towards the bottom left corner.
- Leave the pick in place temporarily to prevent the adhesive from re-sealing.

## Step 4



- Apply heat to the left edge of the iPad for about two minutes, or until it's slightly too hot to touch comfortably.
  - If necessary, re-heat your iOpener for a few seconds or until it's a bit too hot to touch. Be careful not to overheat the iOpener, or it may burst.
- Insert a second opening pick at the bottom left corner of the iPad.
- Slide the second opening pick along the left side of the display to separate the adhesive underneath.
- Leave the opening pick inserted near the top left corner of the iPad to prevent the adhesive from re-sealing.



## Step 5



- Apply heat to the top edge of the iPad for about two minutes, or until it's slightly too hot to touch comfortably.

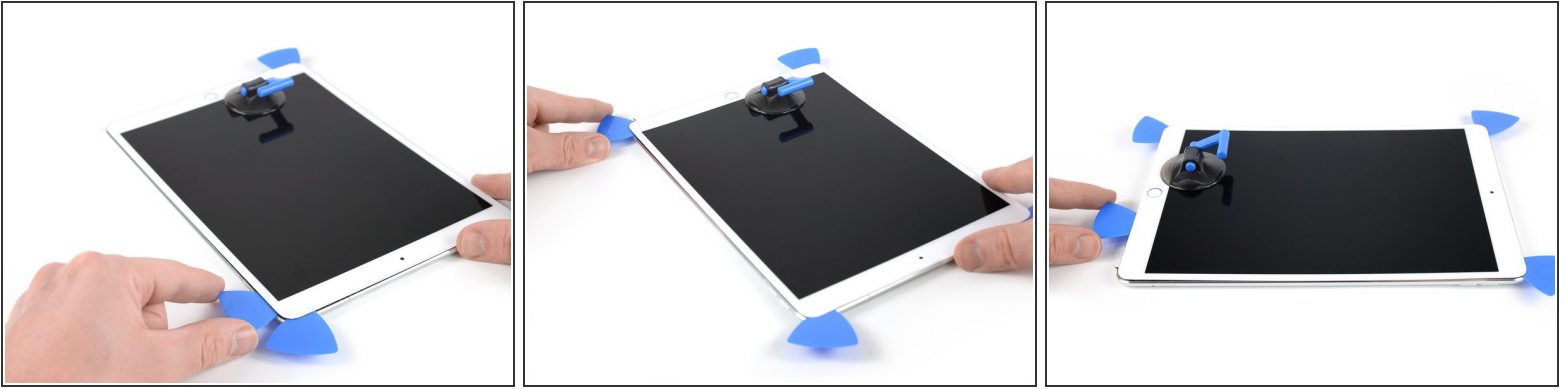
## Step 6



- Insert a third opening pick at the top left corner of the iPad.
- Use the opening pick to cut the adhesive under the top edge of the iPad by sliding it to the top right corner.

**⚠** The front-facing camera is located right in the center of the iPad's top edge and can be damaged if the pick is inserted too far. Only insert the tip of the opening pick when cutting near the camera.

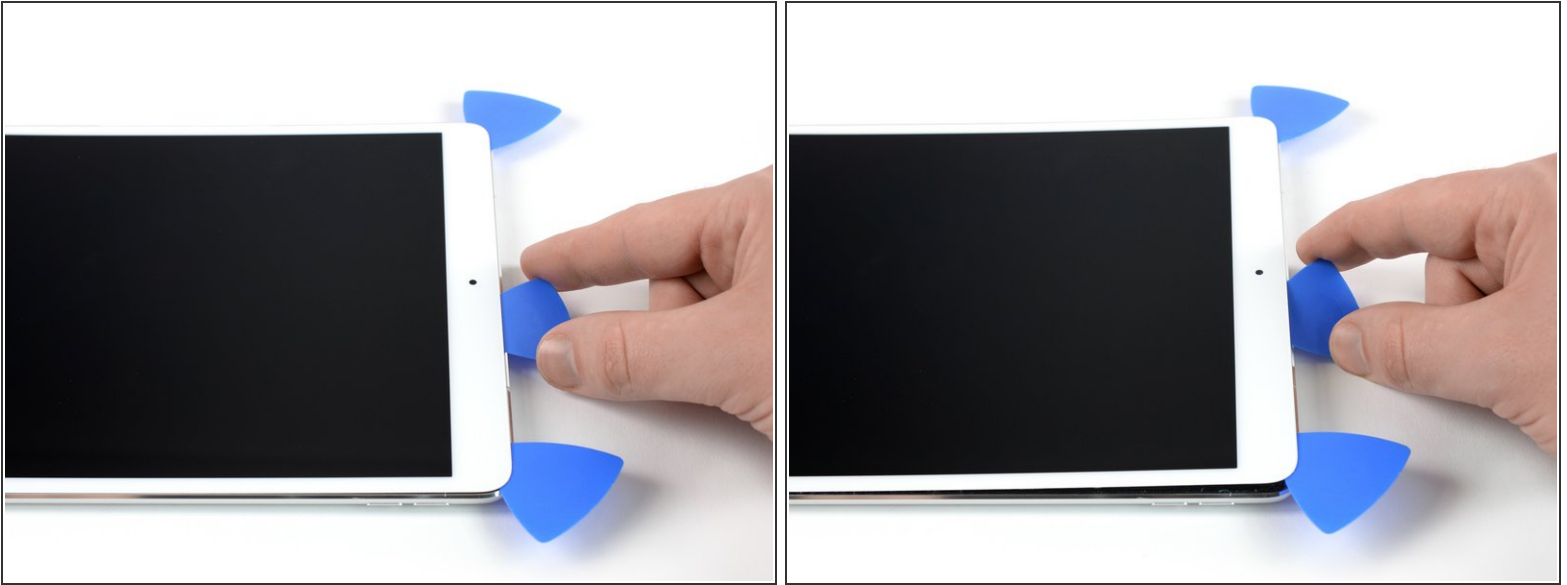
## Step 7




- Apply heat to the final, right edge of the iPad for about two minutes, or until it's slightly too hot to touch comfortably.
- Insert a fourth opening pick at the top right corner of the iPad.
- Slide the opening pick down to the bottom right corner to cut the adhesive.
- Slide the opening pick around the bottom right corner—pausing to apply more heat if needed—and cut the remaining adhesive on the bottom edge, but stop before you reach the home button.



## Step 8

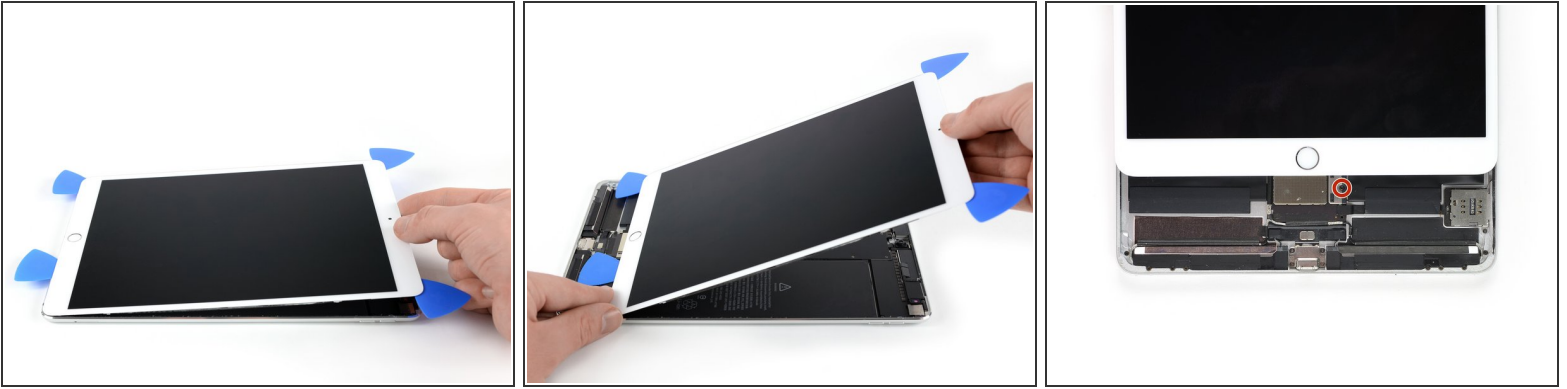


- Insert a fifth opening pick at the top of the iPad near (but not directly on) the front-facing camera.
- Gently twist the pick to separate the display assembly from the iPad.

 Don't try to remove the display all the way yet! It is still connected to the iPad's motherboard.

- If needed, apply more heat and/or cut any remaining adhesive that prevents the display from separating.

## Step 9



- Lift the display assembly from its top edge and carefully slide it up (towards the front-facing camera and headphone jack), until the screw that secures the battery power connector is revealed at the bottom.

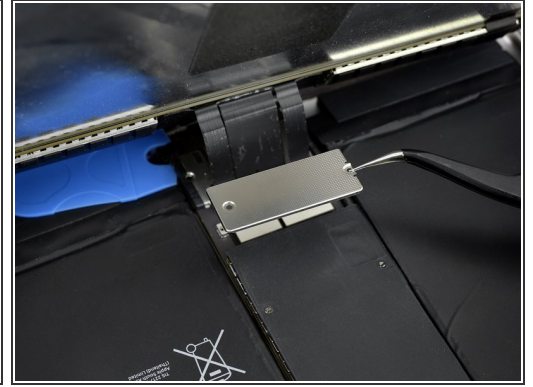
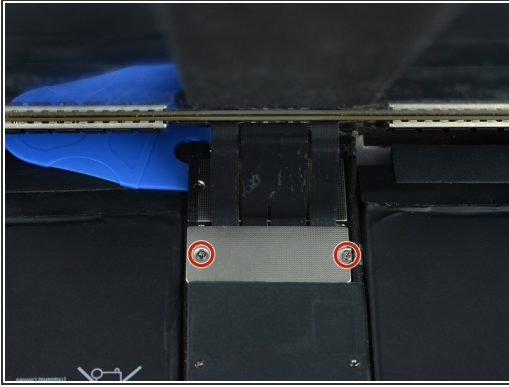
⚠ Don't lift the display more than 70° or you may damage the attached ribbon cables.

## Step 10



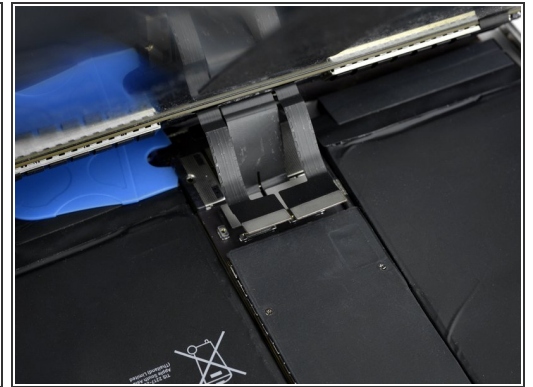
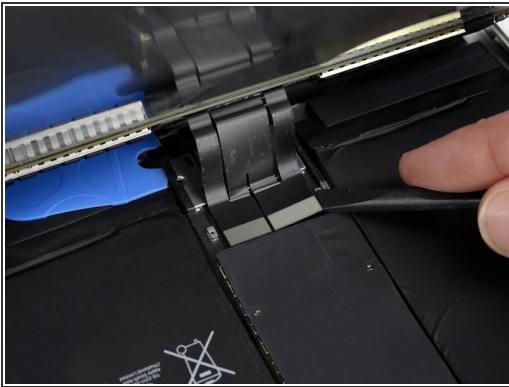
- Remove the 1.9 mm Phillips screw that secures the battery power connector.
- To disconnect the battery, slide one prong of a Battery Blocker under the battery power connector to ensure the power circuit is interrupted.

## Step 11



- Slowly lift the display from its top edge, being careful not to strain the attached ribbon cables.
- Remove the two 1.3 mm Phillips screws securing the display connector cover bracket.
  - ⓘ You may need to angle the driver slightly in order to avoid straining the ribbon cables.
- Remove the display connector cover bracket.

## Step 12



- Use a spudger to disconnect the two visible display flex connectors by gently prying them straight up from their sockets.

## Step 13



 Underneath, you'll find two additional display cable connectors.

- Use your spudger to gently pry them up and disconnect them.

## Step 14



- Remove the display assembly.
  - ✦ During reassembly, before installing a display, remove any remaining adhesive from the iPad, and clean the glued areas with high concentration isopropyl alcohol (90% or greater) and a lint-free cloth. This helps prep the iPad for fresh adhesive and ensures that it will bond properly.
  - ✦ If you plan to reinstall your existing display, remove any remaining adhesive from the back and clean the adhered areas with isopropyl alcohol.
  - ✦ Test your iPad's functions and install [pre-cut adhesive strips](#) to the back of the display using our [display adhesive application guide](#) before sealing it up.



## Step 15 — Front-Facing Camera



- Remove the ten 1.3 mm Phillips screws that secure the EMI shield on top of the logic board.

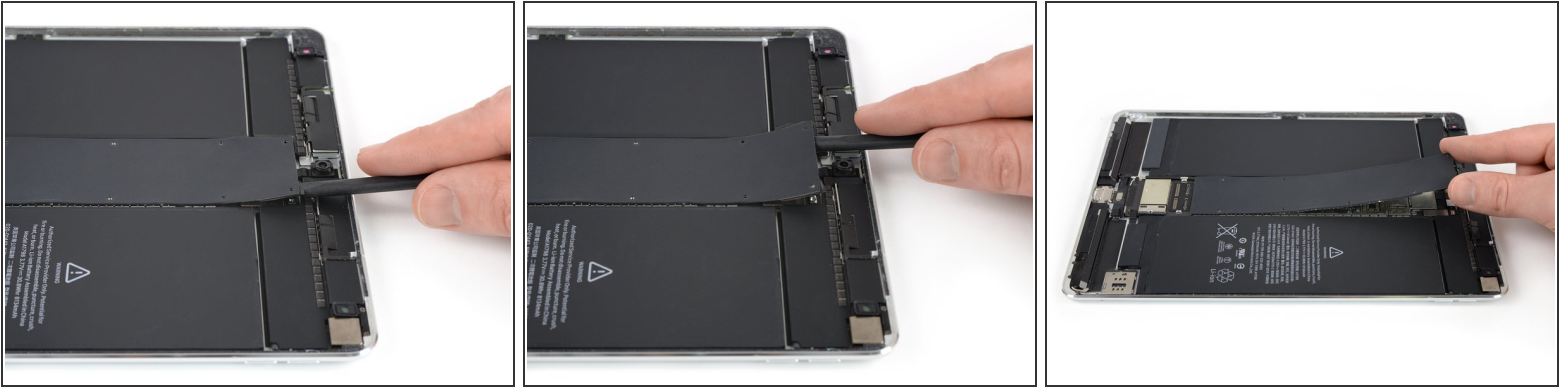
## Step 16



- Apply a [heated iOpener](#) to the EMI shield to loosen the adhesive beneath. Apply the iOpener for at least two minutes.

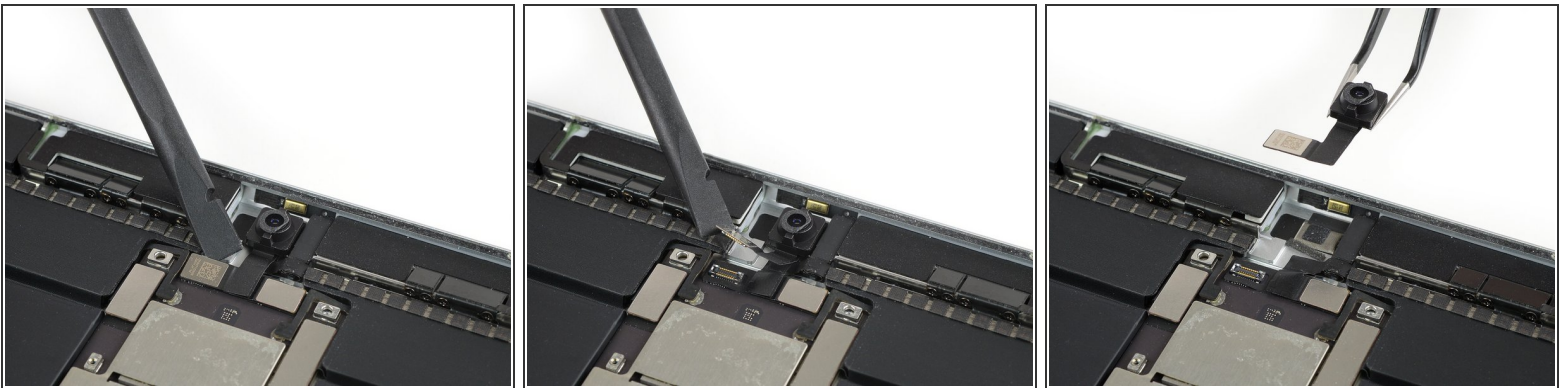


## Step 17



- Use flat end of a spudger to pry up the EMI shield, starting from the top edge near the front-facing camera.
- ❗ In addition to screws and mild adhesive, the shield is also secured with clips along the outer edges. Try to bend the shield as little as possible when removing it, so you can bend it back to its original shape and re-use it. During reassembly, it should snap back into place once the screws are tightened.
- Continue carefully prying up the EMI shield until you can remove it.

## Step 18



- Use the edge of a spudger to pry up and disconnect the flex cable for the front-facing camera.
- Remove the front-facing camera.

To reassemble your device, follow these instructions in reverse order.

**If possible**, turn on your iPad and **test your repair** before resealing the tablet.

Take your e-waste to an [R2 or e-Stewards certified recycler](#).

Repair didn't go as planned? Check out our [Answers community](#) for troubleshooting help.