



iPad Pro 12.9" 3rd Gen Screen Replacement Replacement

Safely remove a shattered screen

Written By: Mark D Schlossman



INTRODUCTION

Couldn't find a guide to fix a customers iPad so here it is put alot of work into Providing something you can use a reference! Thanks comment please!

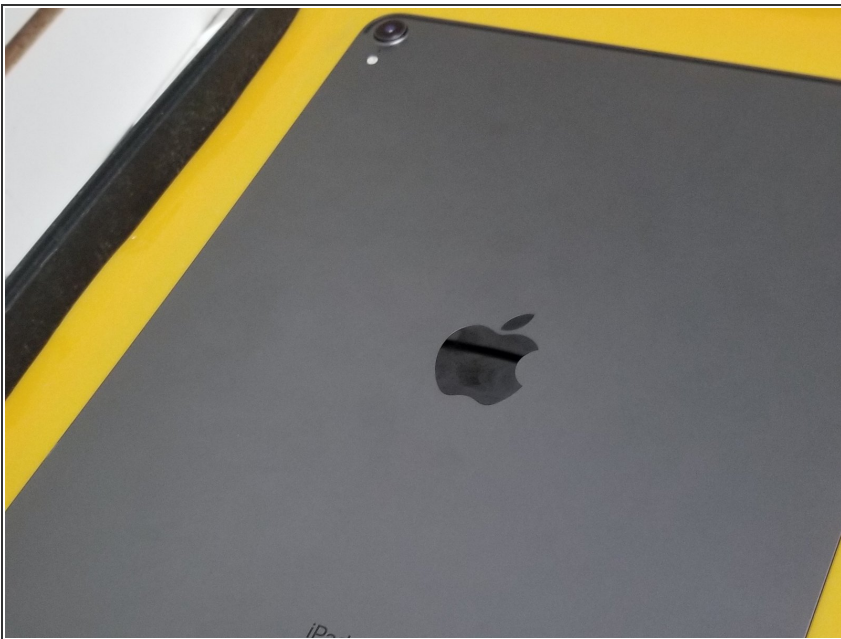
Step 1 — Screen Replacement



★ iPad Pro 3rd Gen' A1895

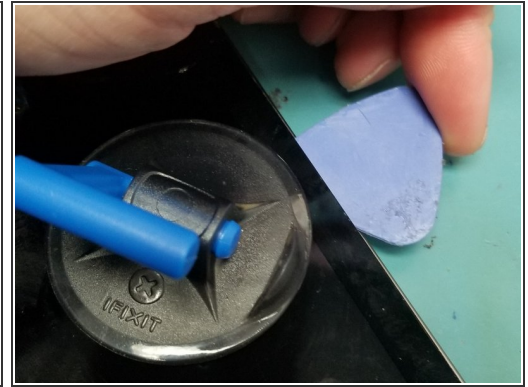
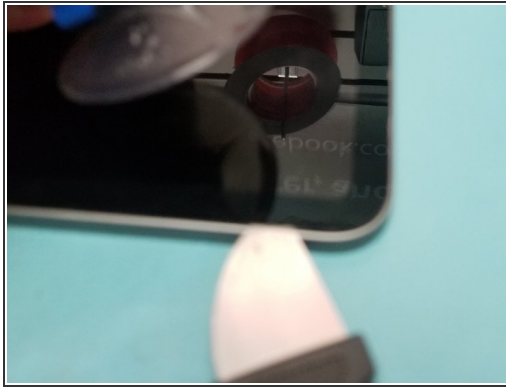
- Be Sure to turn off iPad by pressing and release the volume up button then volume down.
 - While Pressing and holding side button until screen turns off.
 - Just use the slider if you can.
- ⚠ Not powering it off can blow out your lcd back light just like iphones other ipads!

Step 2



- ⚠ You can use a heat gun or another handy heating method! MUST DO!
- Heating the entire screen will help make it easy to safely remove the screen.

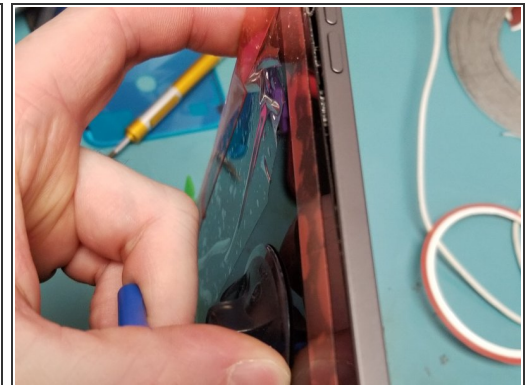
Step 3



⚠ After 15 Mins In Heater to loosen the strong adhesive!

- Use a metal pry tool near the least broken shattered side.
- Use a ifixit suction cup to pull up screen for a plastic guitar pick.

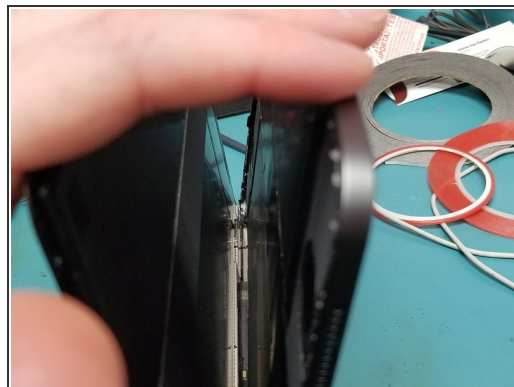
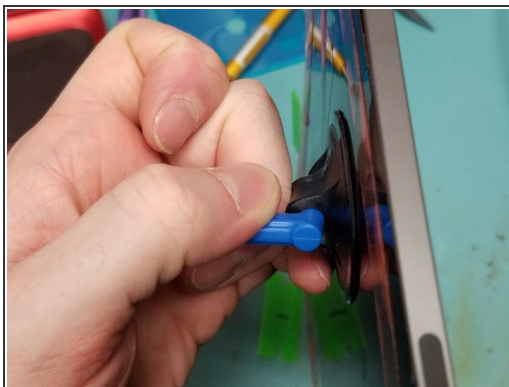
Step 4



- Apply tape or adhesive over broken glass!
- Bust out the metal pry tool lifting broken causing glass to stick to tape working your way around broken side.
- Wiggle Jiggle the screen off the adhesive using multiple plastic guitar picks.

⚠ Do Not Tear the Screen Off!!!

Step 5



⚠ Do not rip the screen off!! Cables are very short will cause internal Damages!!!

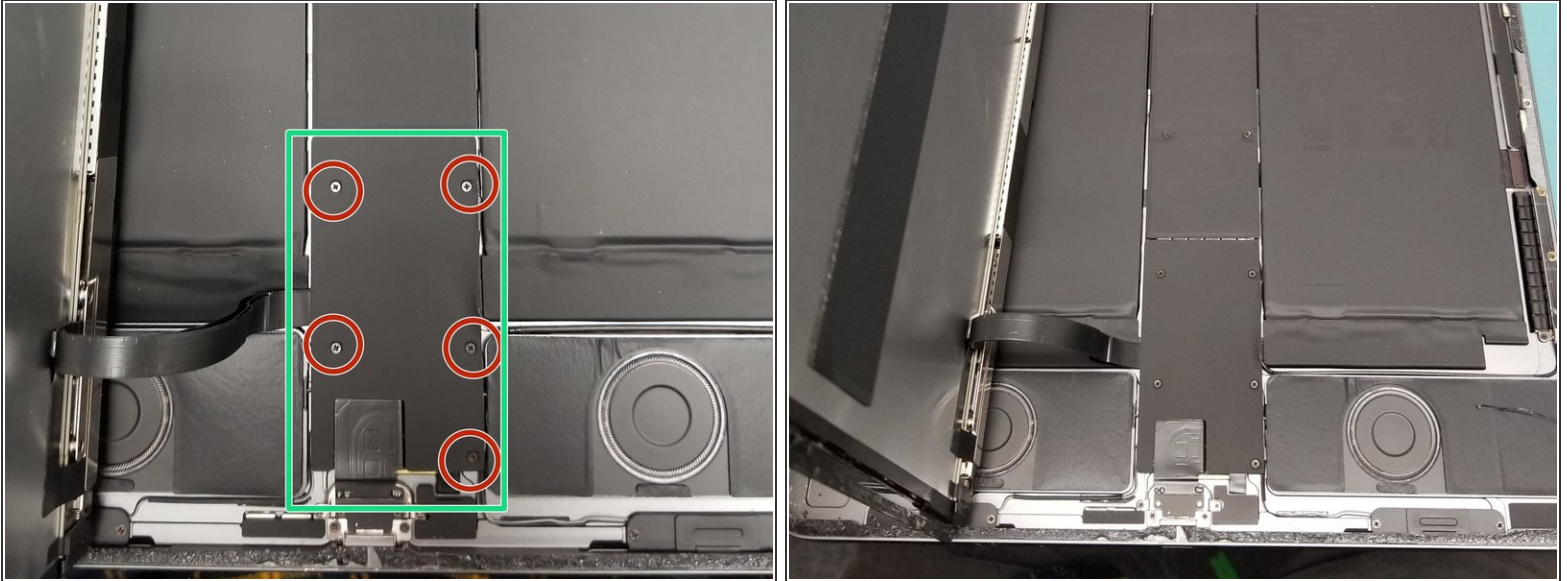
- On the Top of the screen the proximity sensor front camera has to be disconnected 1st.

Step 6



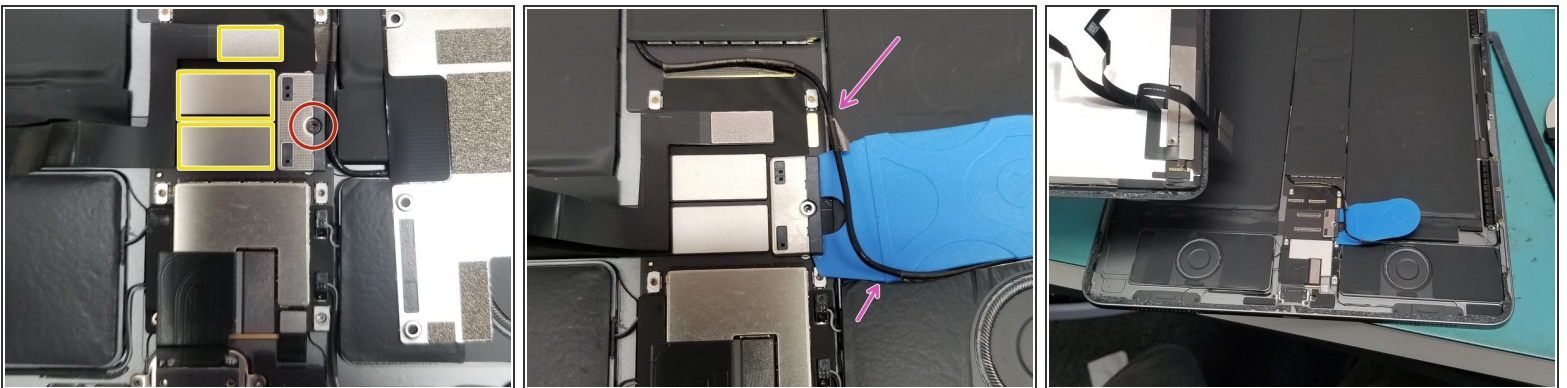
- Lay screen flat pull it down just enough to use a PH000 Screw drive to remove the safety bracket
- Use Flat Ended Spoudger remove the bracken and cable from the Logic board!

Step 7



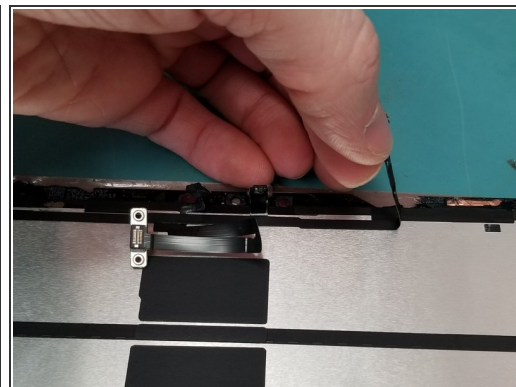
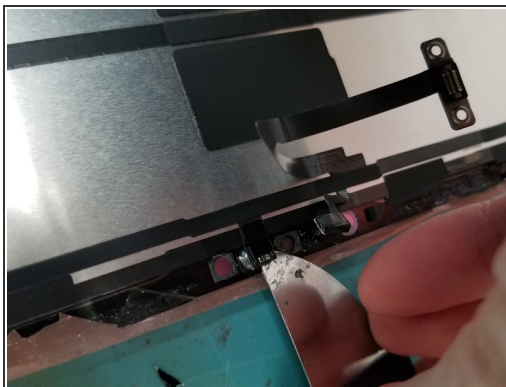
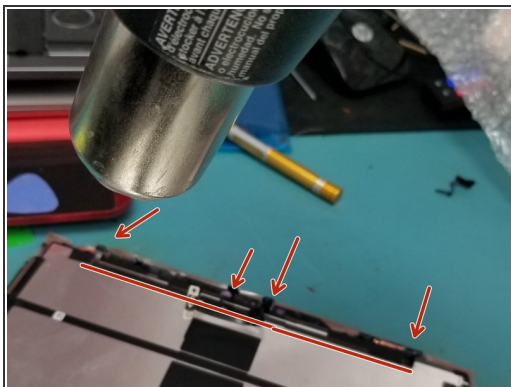
- Perfect! Now Lift the screen folding it up to the left like so!
- Remove 5 PH000 Screws protecting Power Connection and Display Cables

Step 8



- PH000 to Battery Connection
- ⚠ After detaching battery connection
 - Move Small cable is taped around edges up so you can properly disconnect battery connection
 - Remove all 3 ribbon cables from logic board with flat headed spudger!

Step 9

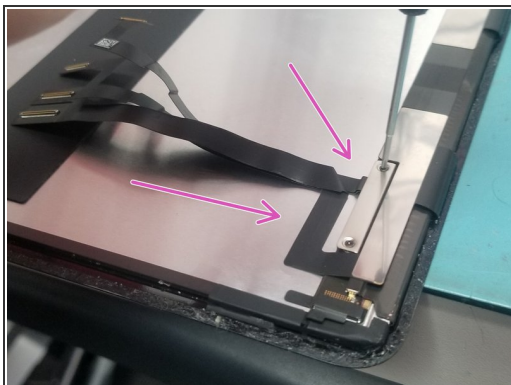


- Just a touch of heat don't melt the thing off remove the face ID sensor from Old Screen.

⚠ Damaging Proximity sensor could effect True Tone with 3rd Party Parts

- Gently use a tool to get under glued down connection on glass frame of screen!

Step 10



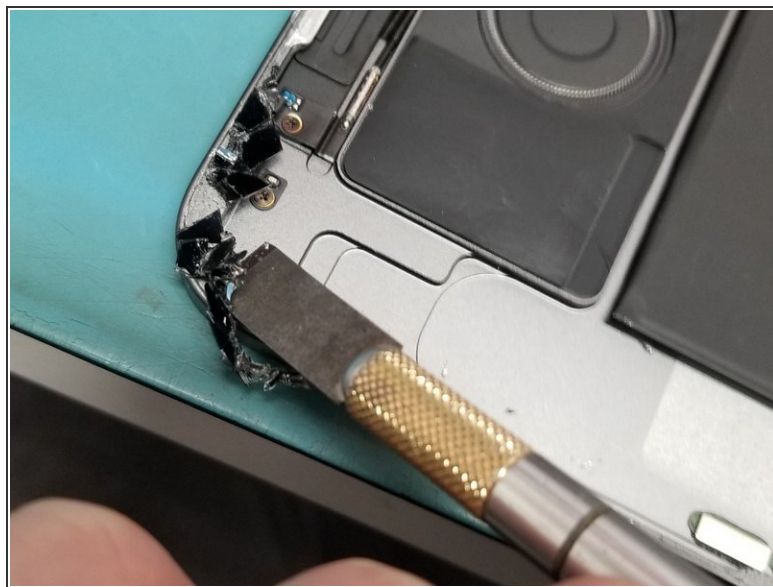
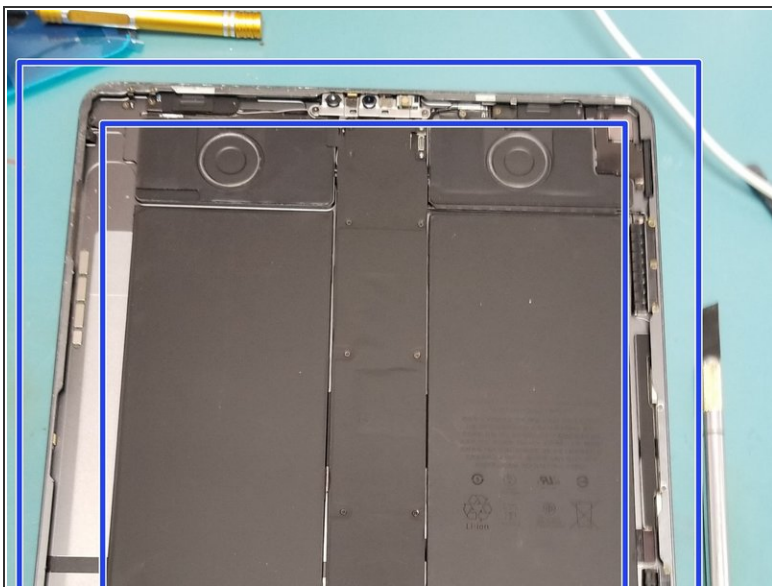
- Remove Bracket off old screen you and move it to new screen
- Transfer Cables and Bracket to new screen

Step 11



- Place Screen without adhesive test your screen and face ID
- After running test take

Step 12



- ✦ Clean Edges with flat ended metal tool to remove broken glass
- ⓘ Clean desk of glass on table get ready to remove Proximity sensor from old screen!
 - Do not clamp recommend to use flat and heavy object
 - Broken glass on the frame will crack your new screen

To reassemble your device, follow these instructions in reverse order.