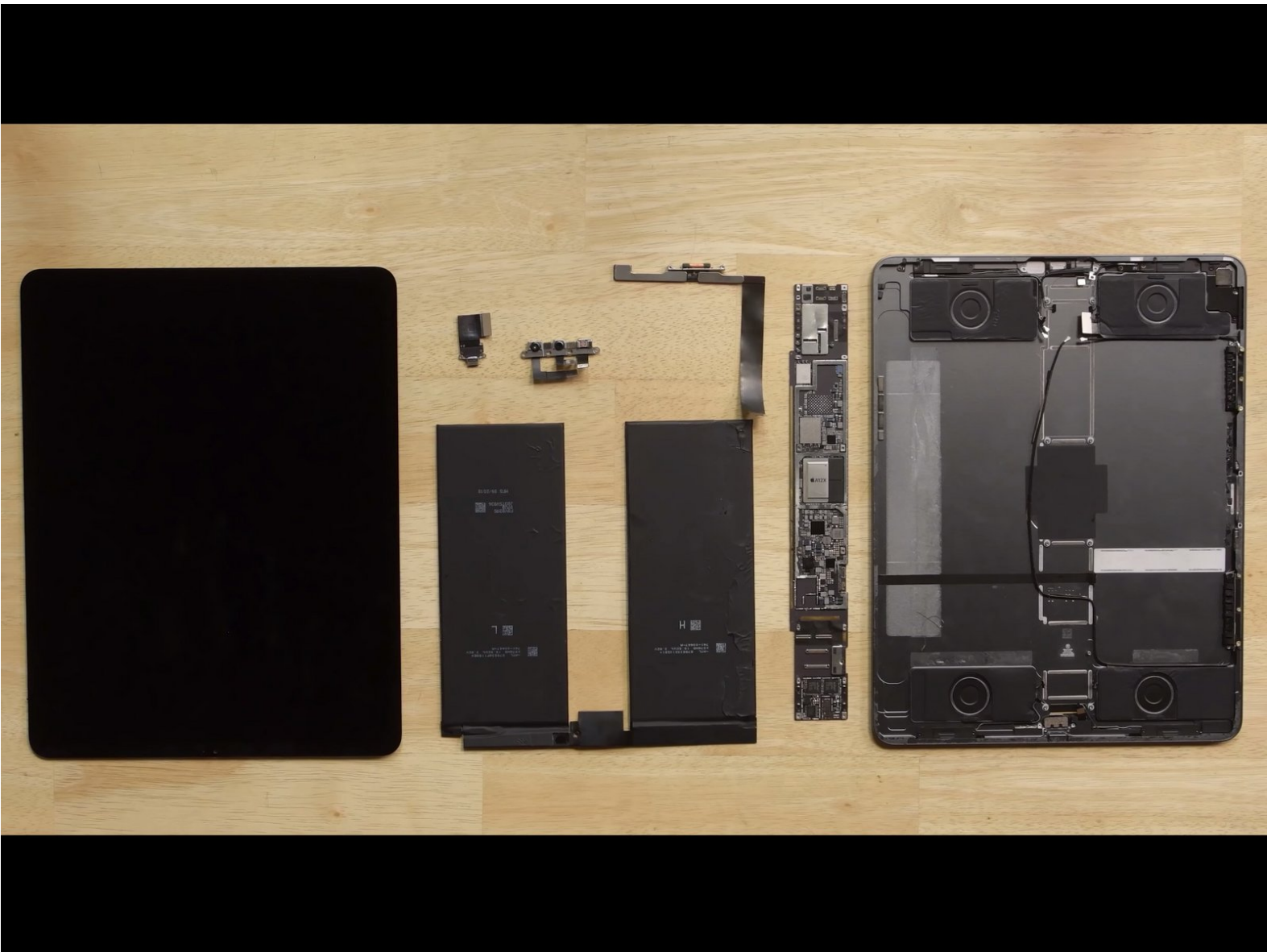




iPad Pro 12.9" 3rd Gen Teardown

Our video team tears down the new iPad Pro 12.9", finding some hefty speakers, and lots and lots of glue.

Written By: Taylor Dixon



Step 1 — Final Thoughts

REPAIRABILITY SCORE:



- The iPad Pro 12.9" 3rd Gen earns a **3 out of 10** on our repairability scale (10 is the easiest to repair):
 - The USB-C port is modular and can be independently replaced.
 - The lack of a physical home button eliminates a common failure point and may simplify repairs.
 - The battery is secured with both easier-to-remove stretch-release tabs *and* conventional, non-removable adhesive.
 - The LCD and front panel glass are fused together—simplifying the opening procedure, but increasing the cost of repair.
 - Gobs of adhesive hold most everything in place, making all repairs more difficult.

To reassemble your device, follow these instructions in reverse order.