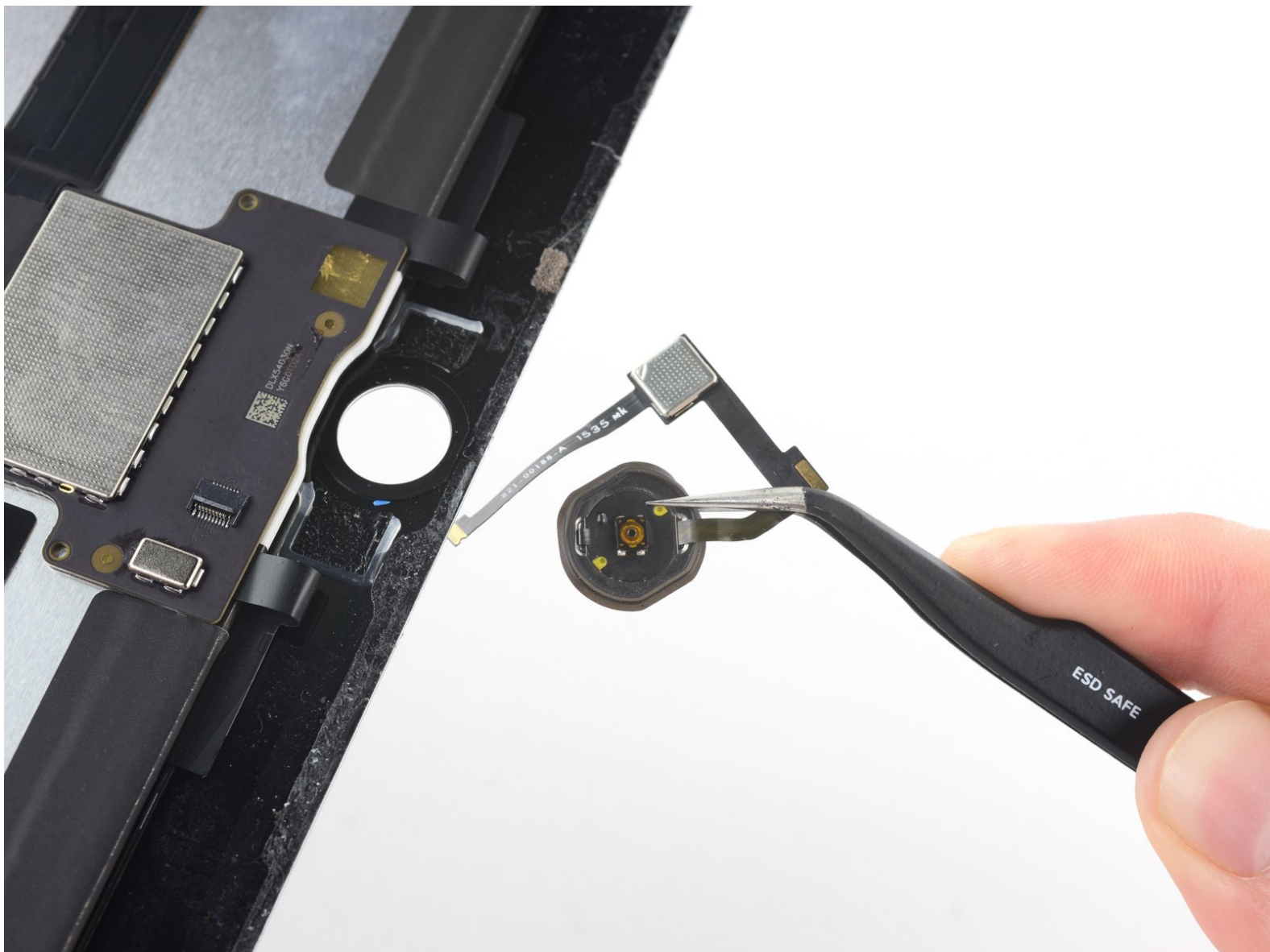




# iPad Pro 12.9" Home Button Replacement

Replace the home button, including the Touch ID fingerprint reader in an iPad Pro 12.9".

Written By: Evan Noronha



# INTRODUCTION

Use this guide to replace the home button in a 12.9" iPad Pro.

Parts of this guide were shot with a Wi-Fi model and as such the internals may look slightly different from the LTE model. The procedure is the same for both models except where noted.



## TOOLS:

- [Battery Blocker](#) (1)
- [iOpener](#) (1)
- [iFixit Opening Picks set of 6](#) (1)
- [Halberd Spudger](#) (1)
- [Spudger](#) (1)
- [Tweezers](#) (1)
- [Plastic Cards](#) (1)
- [Suction Handle](#) (1)



## PARTS:

- [iPad Pro 12.9" Adhesive Strips](#) (1)
- [Tesa 61395 Tape](#) (1)

## Step 1 — iOpener Heating



-  We recommend that you clean your microwave before proceeding, as any nasty gunk on the bottom may end up stuck to the iOpener.
- Place the iOpener in the center of the microwave.
-  For carousel microwaves: Make sure the plate spins freely. If your iOpener gets stuck, it may overheat and burn.

## Step 2



- Heat the iOpener for **thirty seconds**.
- Throughout the repair procedure, as the iOpener cools, reheat it in the microwave for an additional thirty seconds at a time.

- ⚠ Be careful not to overheat the iOpener during the repair. Overheating may cause the iOpener to burst.
- ⚠ Never touch the iOpener if it appears swollen.
- ⚠ If the iOpener is still too hot in the middle to touch, continue using it while waiting for it to cool down some more before reheating. A properly heated iOpener should stay warm for up to 10 minutes.

## Step 3




- Remove the iOpener from the microwave, holding it by one of the two flat ends to avoid the hot center.
- ⚠ The iOpener will be very hot, so be careful when handling it. Use an oven mitt if necessary.

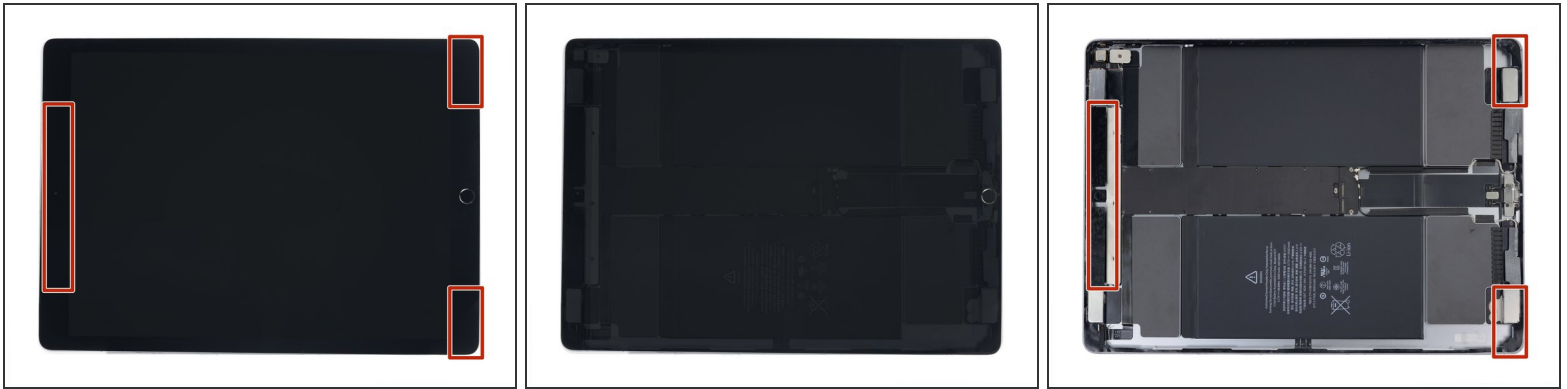
## Step 4 — Display Assembly



- If your display glass is cracked, keep further breakage contained and prevent bodily harm during your repair by taping the glass.
- Lay overlapping strips of clear packing tape over the iPad's display until the whole face is covered.
  - ⓘ This will keep glass shards contained and provide structural integrity when prying and lifting the display.
- Do your best to follow the rest of the guide as described. However, once the glass is broken, it will likely continue to crack as you work, and you may need to use a metal prying tool to scoop the glass out.

 Wear safety glasses to protect your eyes, and be careful not to damage the LCD screen.

## Step 5



- i** Removing the display assembly involves using a halberd spudger or opening pick to separate the adhesive securing the display to the rear case.
- i** Use the photos in this step to know the locations of the adhesive and where it is the thickest.

  - Refer to these images while following the guide to see where the adhesive is thickest and where to cut the deepest with your opening tool.

## Step 6



- Lay the hot iOpener over the left edge of the iPad to soften the adhesive holding it in place.
- i** Alternatively, use a heat gun, hair dryer, or heat pad to heat the perimeter of your iPad.
- Wait about two minutes for the adhesive to soften before proceeding to the next step.

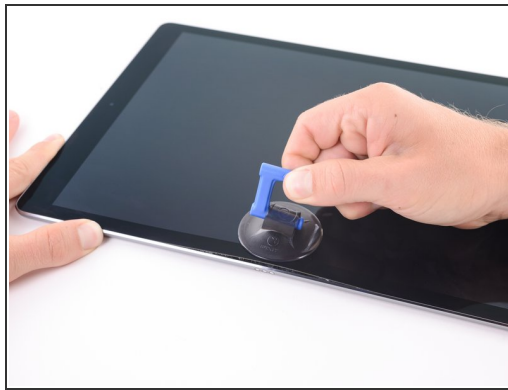
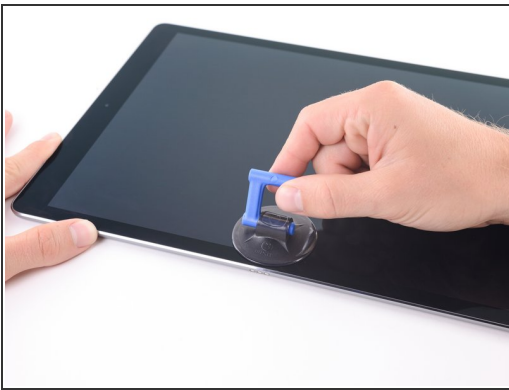


## Step 7



- Attach a suction handle to the left edge of the iPad's display, equidistant from the top and bottom corners.

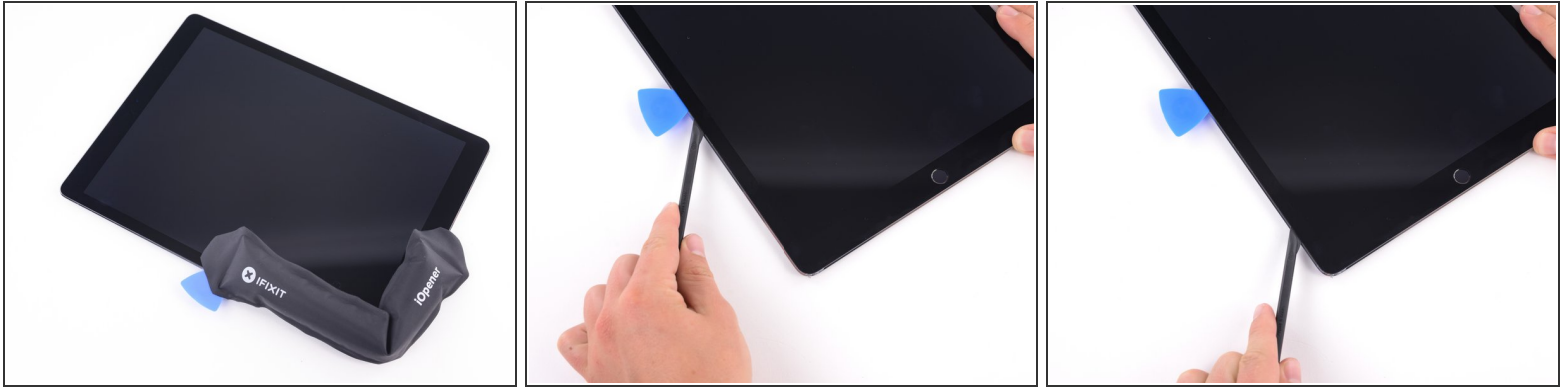
## Step 8



- While holding down the corners of the device, repeatedly pull up on the display then ease it back down to weaken the adhesive.
- Once you've opened a small gap between the front panel and the rear case, insert the blade of a halberd spudger or an opening pick in the gap you've created.
  - ⚠ Do not insert the pick more than 2 millimeters. Going any farther will permanently damage the display assembly. If using a halberd spudger, slice with the shortest part of the blade.



## Step 9



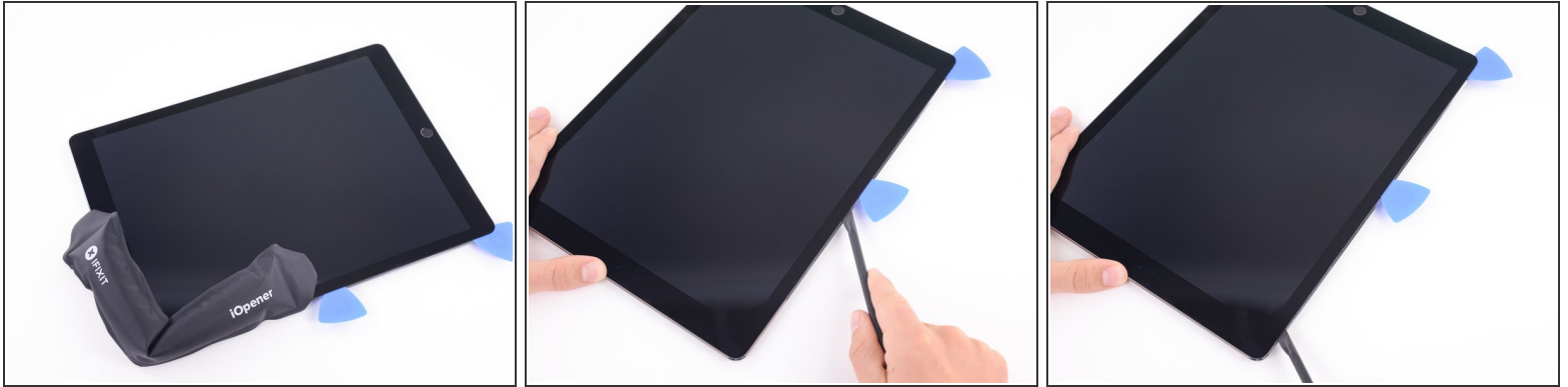
- Lay a hot iOpener along the bottom left corner of the iPad, spanning from the opening pick to the home button.
- After letting the adhesive soften, insert a halberd spudger into the iPad next to the opening pick.
  - ⓘ An opening pick can be used in place of the halberd spudger. Use caution if using an opening pick, as inserting the pick too far can damage the display assembly.
- Cut the adhesive along the bottom left side of the iPad using the halberd spudger. This may require reheating the edge of the iPad.
- Continue to slide the halberd spudger back and forth to ensure most of the adhesive is separated.

## Step 10



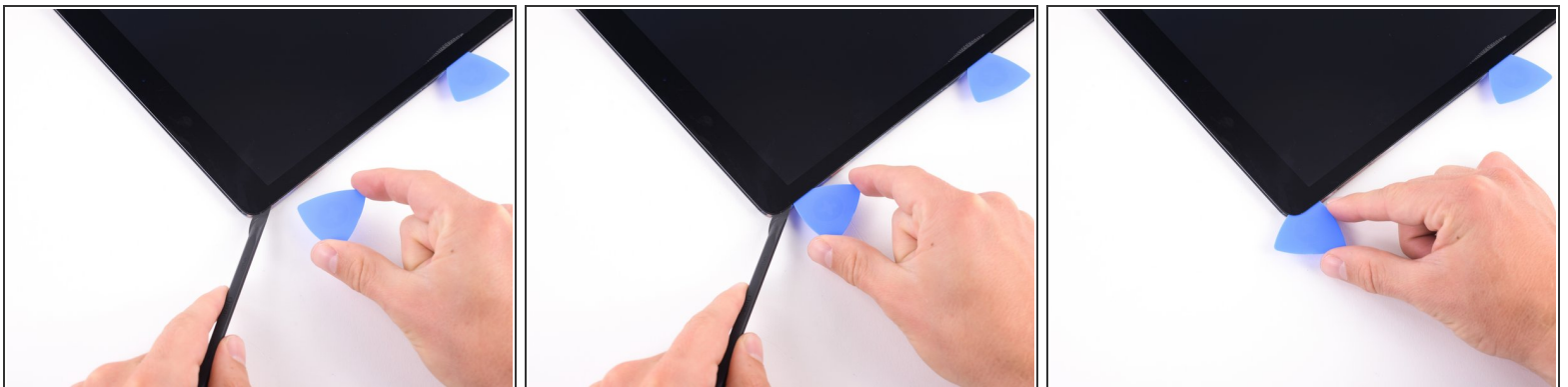
- Insert a pick in the bottom left corner of the iPad to ensure that the adhesive doesn't completely reset.
- Remove the halberd spudger.

## Step 11



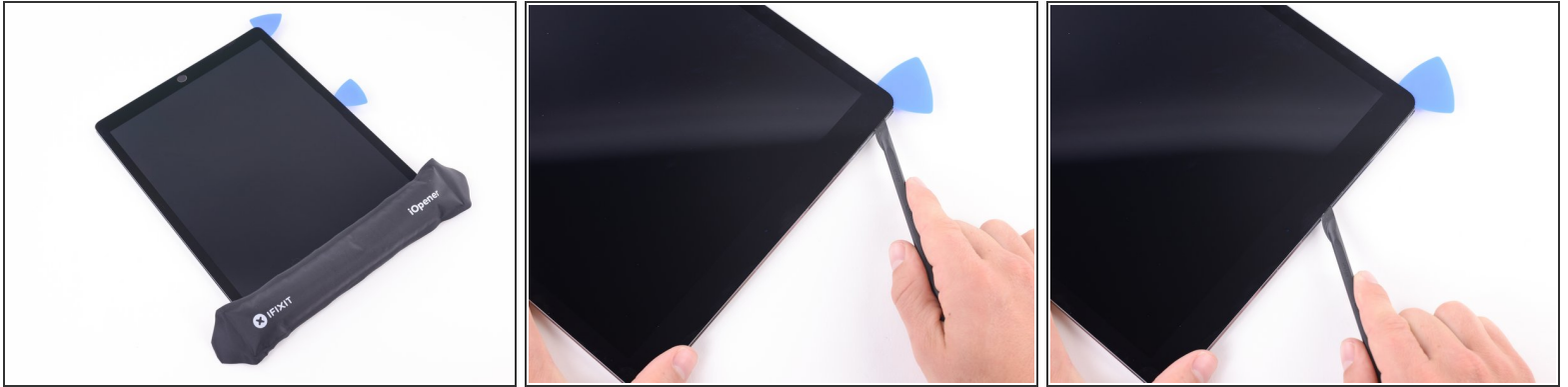
- Lay a hot iOpener along the upper left corner of the iPad, spanning from the opening pick to the front-facing camera.
- After letting the adhesive soften, insert the blade of your halberd spudger into the iPad above the opening pick.
- Cut the adhesive along the upper left side of the iPad towards the front-facing camera using the halberd spudger. This may require reheating the edge of the iPad.

## Step 12



- Insert a pick in the upper left corner of the iPad.
- Remove the halberd spudger.

## Step 13



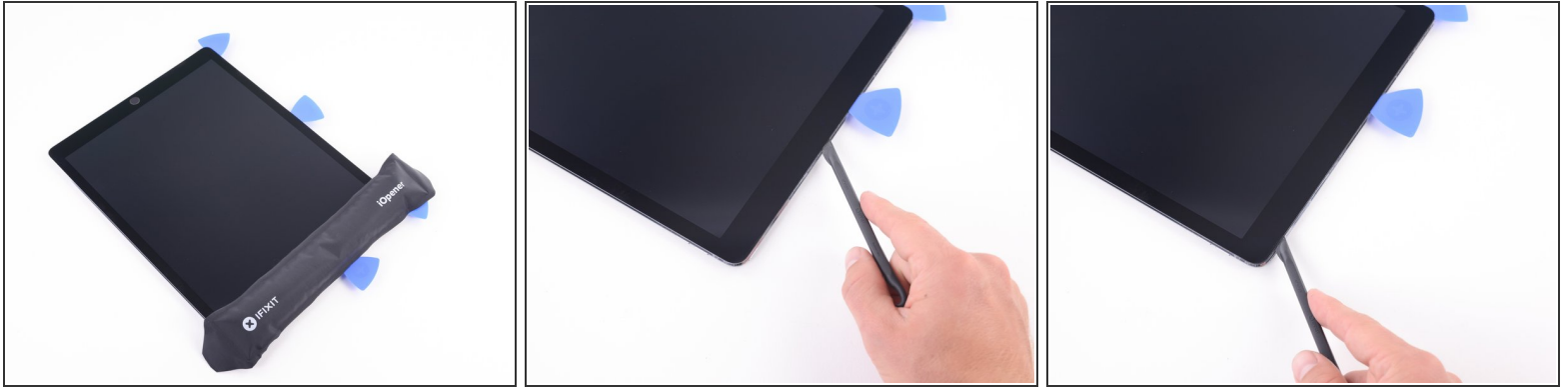
- Reheat your iOpener and lay it over the top edge of the device. Wait a couple minutes for the adhesive to soften.
- Once the front panel is adequately heated, insert the blade of a halberd spudger next to the opening pick from the previous step.
- Slide the blade along the top edge of the iPad, stopping before reaching the front-facing camera.

## Step 14



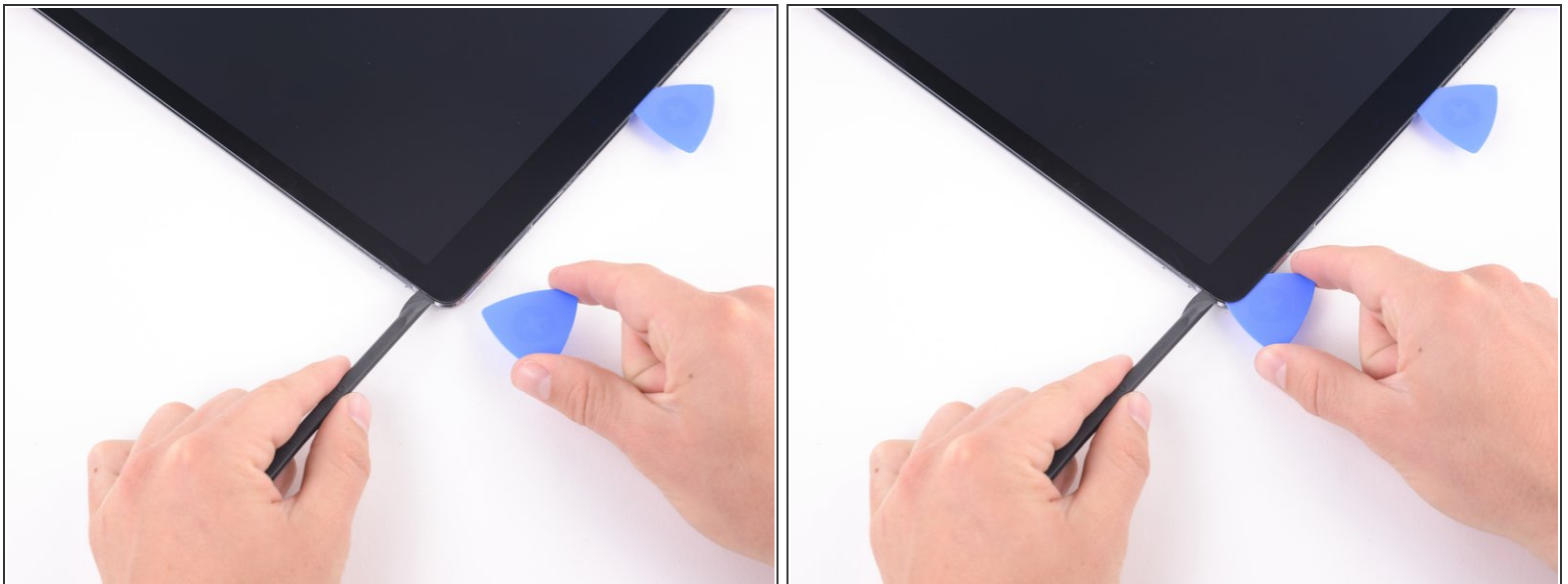
- Insert an opening pick just before the front-facing camera.

## Step 15



- If necessary, reheat your iOpener and lay it over the top edge of the device. Wait a couple minutes for the adhesive to soften before reinserting the blade of the halberd spudger.
- Insert the blade of the halberd spudger just past the front-facing camera, on the opposite side of the opening pick.
- Continue to slide the blade of the halberd spudger to the upper right corner of the iPad.

## Step 16



- Bring the halberd spudger around the corner of the iPad and insert an opening pick in the upper right corner to prevent the adhesive from resettling.

## Step 17



- Soften the adhesive by heating the right edge of the iPad using an iOpener.
- Continue using the halberd spudger to cut away the adhesive holding the display assembly in place, stopping at the middle of the right edge.

## Step 18



- Remove the pick that was placed in the middle of the top edge of the iPad, next to the front-facing camera.
  - ❗ If you have extra opening picks or similar tools you do not need to remove this one.
- Insert that pick in the middle of the right edge of the iPad.



## Step 19



- Insert the halberd spudger between the display and rear case, along the right edge of the device.
- Slide the halberd spudger down the side of the iPad to separate the adhesive.

## Step 20



- Bring the blade of your opening tool around the lower right corner of the device.
- Insert a pick in the lower right corner of the iPad where you slid the blade through.
- Remove the halberd spudger.

## Step 21



- Use an iOpener to heat the bottom of the iPad.
- Insert the blade of a halberd spudger to the left of the opening pick on the bottom right corner of the iPad.
- Slide the halberd spudger along the lower edge of the iPad stopping short about 1 centimeter before reaching the home button.

## Step 22



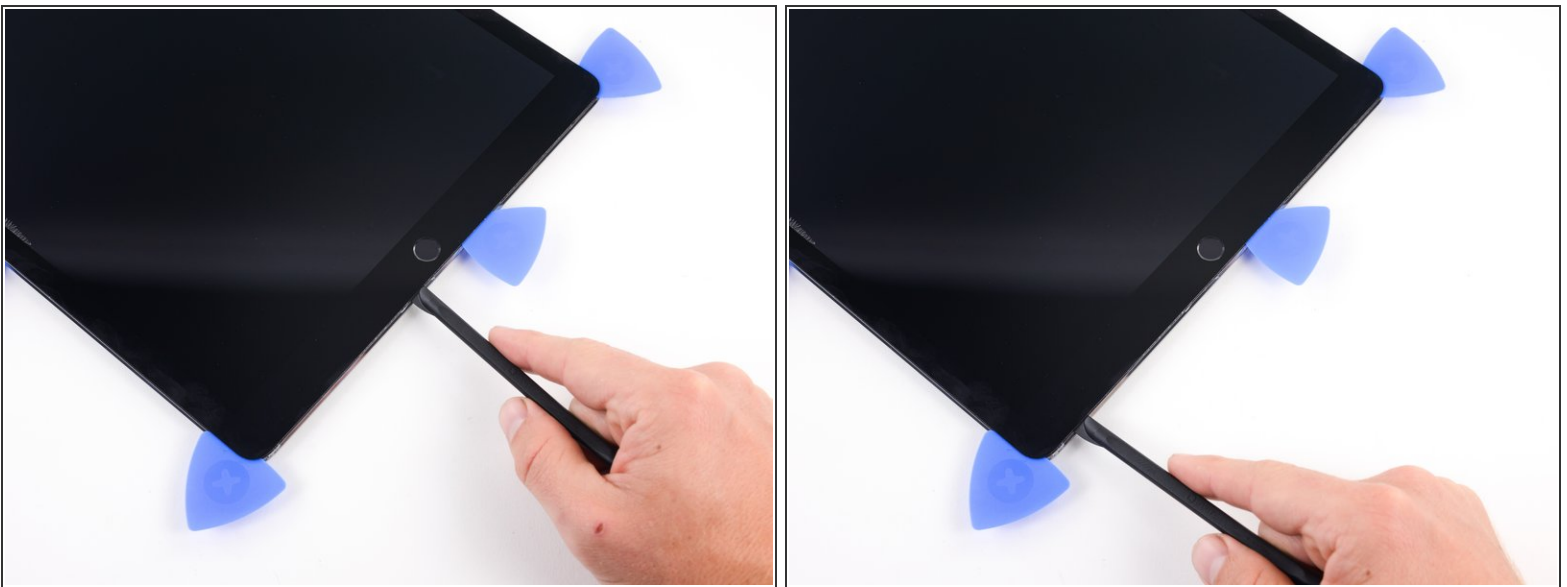
- Remove the pick in the middle of the left side of the iPad.
  - ⓘ If you have extra opening picks or similar tools you do not need to remove this one.
- Insert the pick to the right of home button.

## Step 23



- Pivot the halberd spudger so that you are slicing with the shortest portion of the blade.
- Slide the halberd spudger to cut the adhesive below the home button.

## Step 24



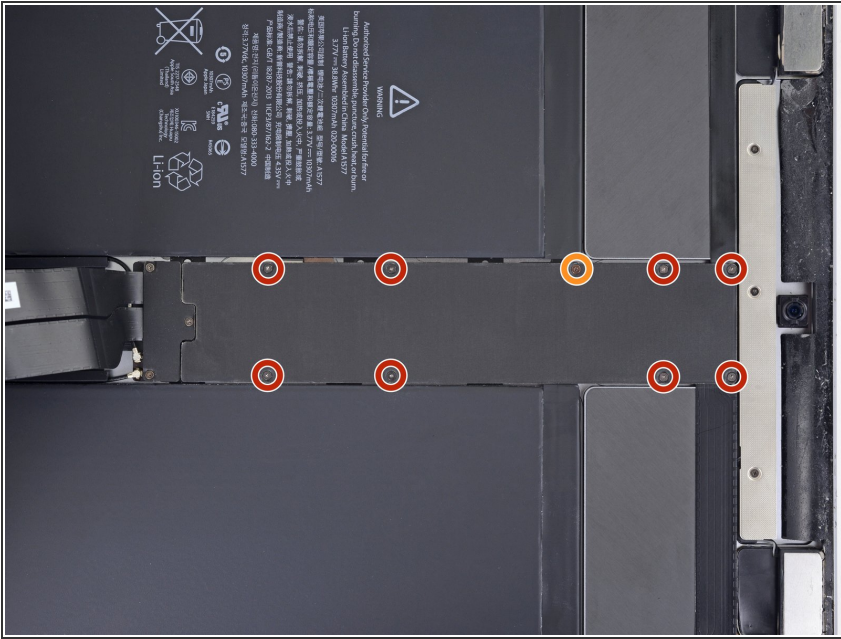
- Reinsert the blade of the halberd spudger as deep as it will go.
- Continue sliding the blade along the edge until you reach the first opening pick you inserted.

## Step 25



- Return to step 5 of this guide and ensure the thick portions of adhesive are adequately separated from the display assembly. If they are, continue with this step. Otherwise, slice the adhesive to break it up until the display assembly is freed.
- ⓘ The display cables in this iPad are shorter than some users may be comfortable with. Read the following warnings before proceeding:
  - ⚠ **Do not pivot the display about the lower edge.** The display cables do not have enough slack to allow for this and will tear if you do not slide the display towards the front-facing camera as you lift.
  - ⚠ The display cables will tear if you raise the display more than 80°.
- Lift up the upper edge of the display and slide it towards the front-facing camera to access the iPad's internal components.

## Step 26

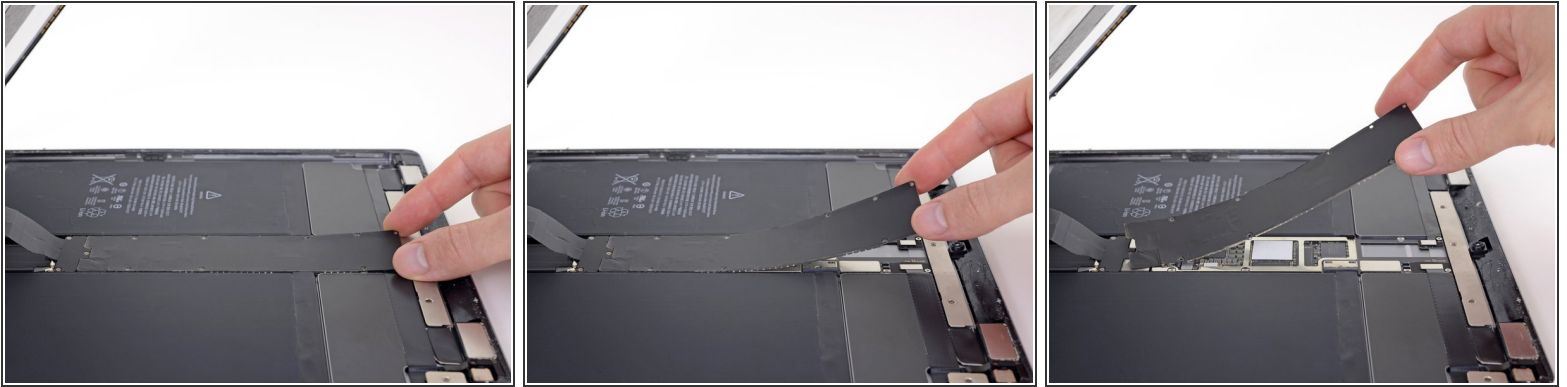


**!** It's important to disconnect the battery before you proceed further. Detaching or connecting the display cables with the battery plugged in can cause a short that will destroy touchscreen functionality.

- To disconnect the battery:
  - First, securely prop up the display so that it won't fall or strain the display cables while you work.
  - Then, remove the nine Phillips screws securing the logic board EMI shield:
    - Eight 1.2 mm screws
    - One 2.4 mm screw

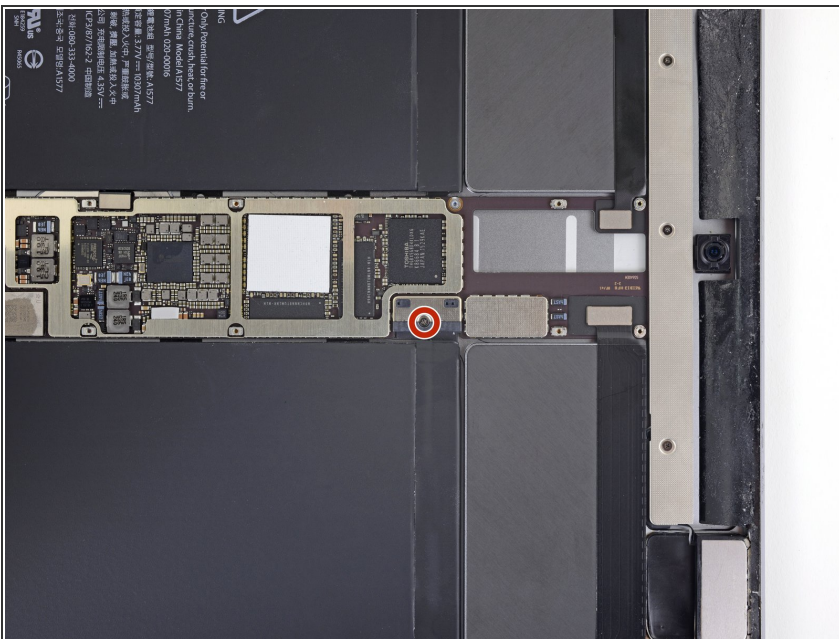


## Step 27



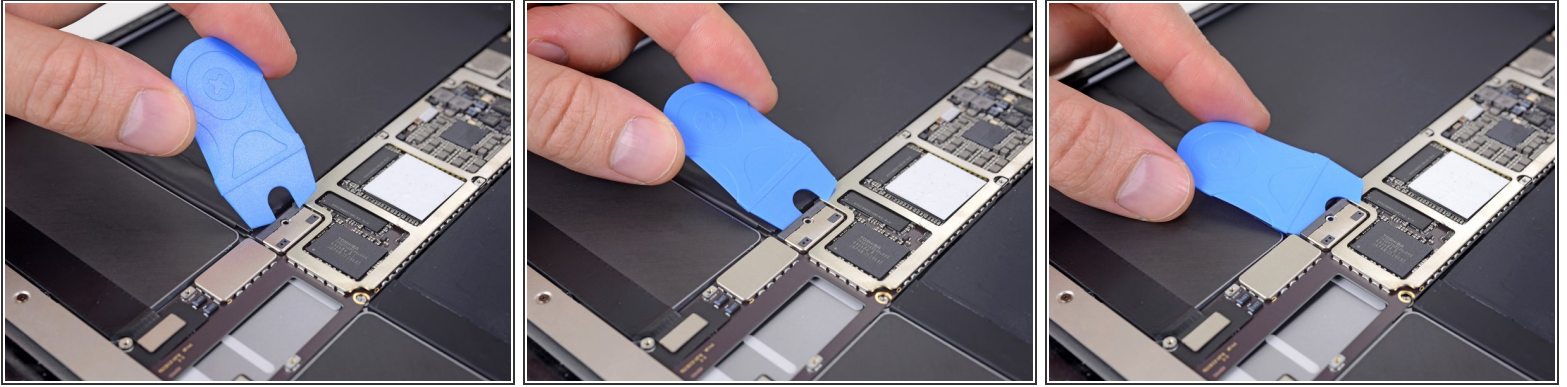
- Lift the logic board EMI shield from the edge nearest the top of the iPad.
- Peel the EMI shield up from the logic board.
  - ⓘ This takes a bit of force due to the many tiny clips securing the shield, and the shield may deform slightly. That's okay—try to keep the deformation to a minimum, and it will lay flat when reinstalled and screwed down.
- Remove the logic board EMI shield.

## Step 28



- Remove the 1.8 mm Phillips screw securing the battery connector.

## Step 29



- Insert a Battery Blocker or other insulator underneath the logic board to separate it from the battery connector.
  - Leave it there to prevent the battery connector leads from making contact until you have completed your repairs.
- i** The rest of the images in this guide show the logic board EMI shield reinstalled, which is incorrect. Follow the instructions, but keep the battery disconnected and do not reinstall the EMI shield until your repairs are complete.

## Step 30



- While supporting the display assembly, remove the following three Phillips screws over the display cable bracket.
  - 2.4 mm Phillips screw
  - 1.2 mm Phillips screw
- Remove the display cable bracket.

## Step 31



- Use the flat end of a spudger to disconnect the two display data and digitizer cables from their respective sockets on the motherboard.

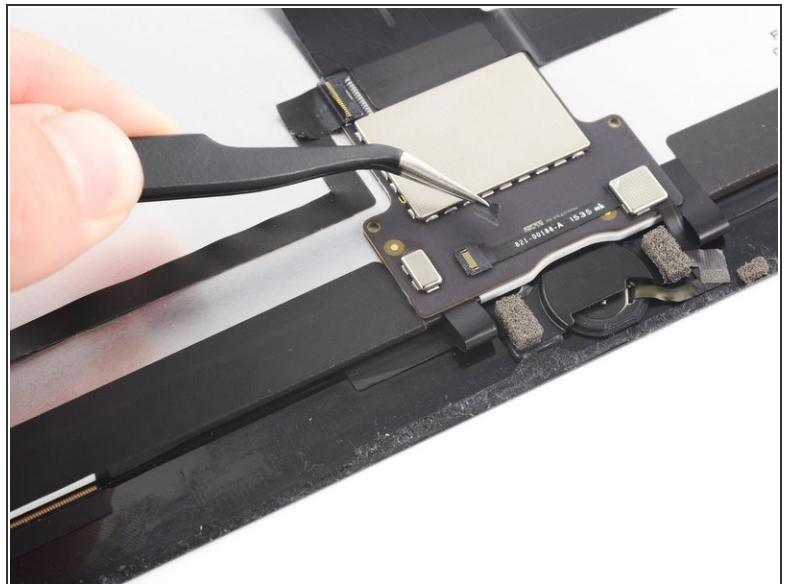


## Step 32



- Remove the display assembly.
- Be sure to remove all remaining adhesive from the iPad's enclosure, and use our [display adhesive application guide](#) to install fresh [pre-cut adhesive strips](#) when reassembling your iPad.

## Step 33 — Home Button



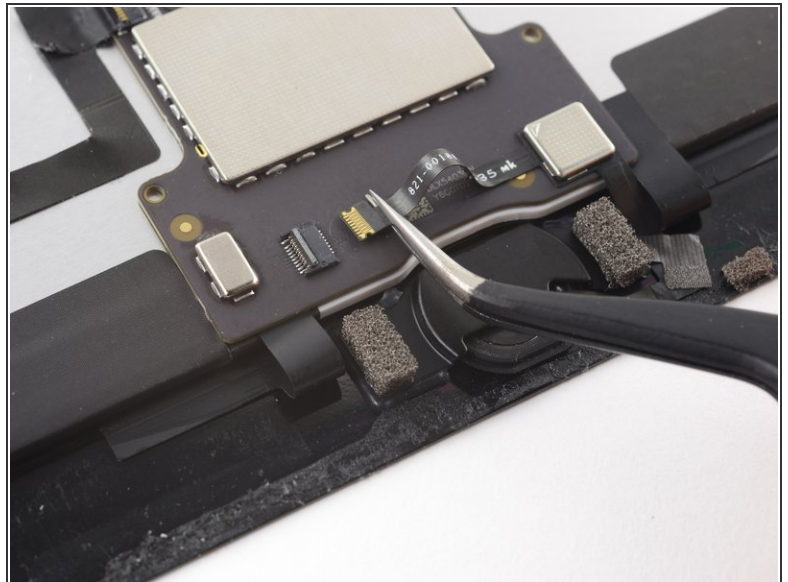
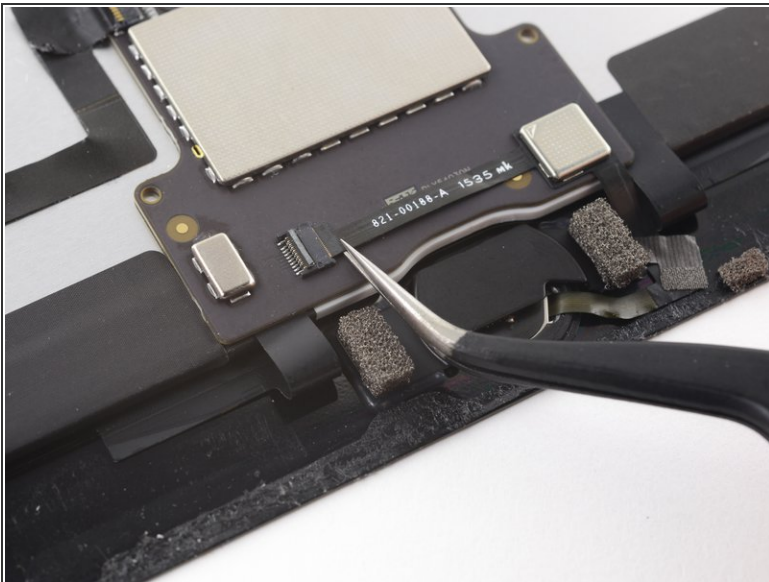
- Remove the tape covering the ZIF connector above the home button.

## Step 34



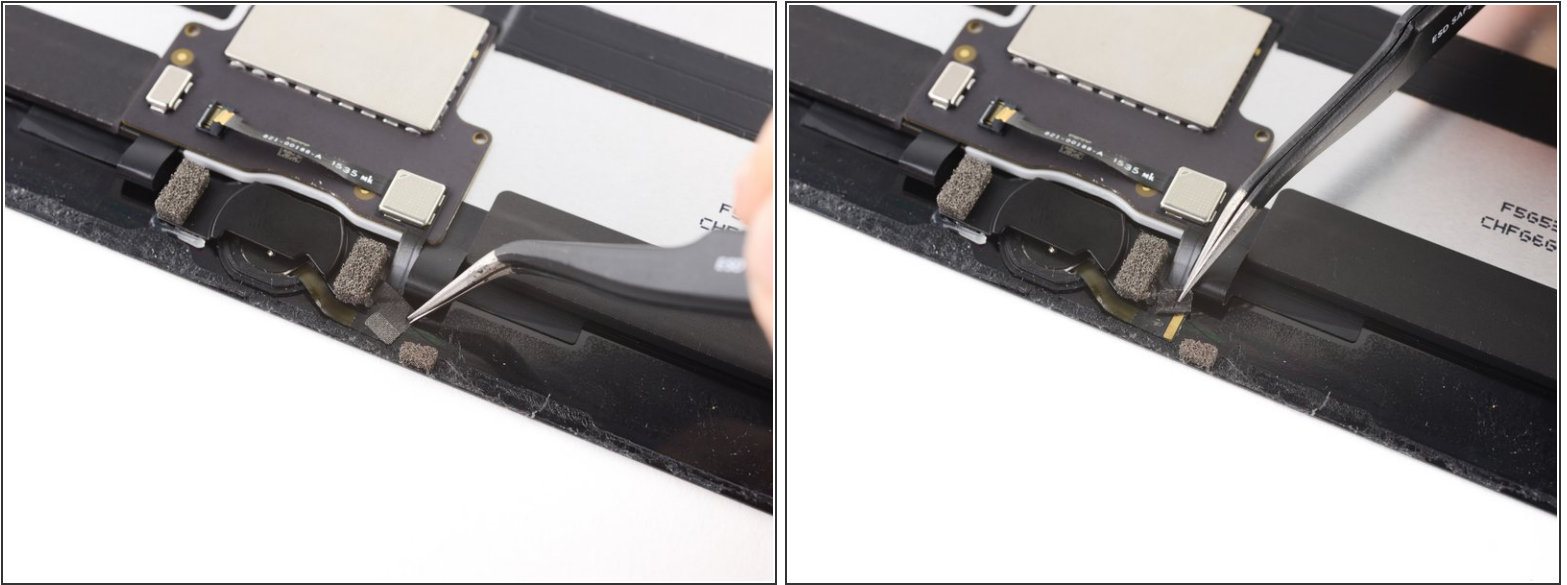
- Use the flat edge of a spudger to lift the flap on the connector that secures the cable.

## Step 35



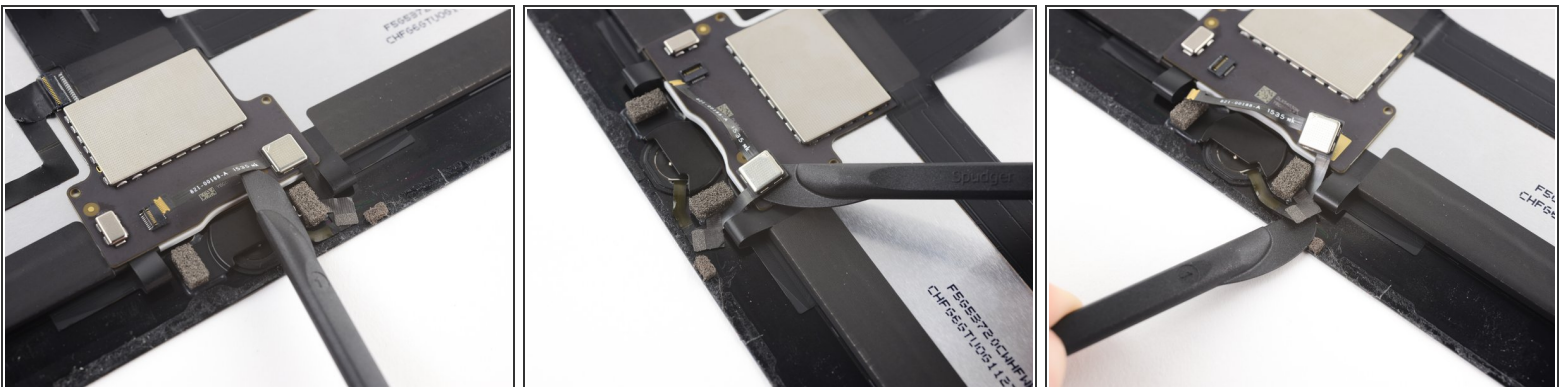
- Pull the cable out of the ZIF connector.


## Step 36



- Use tweezers to remove the tape that covers the home button cable.

## Step 37

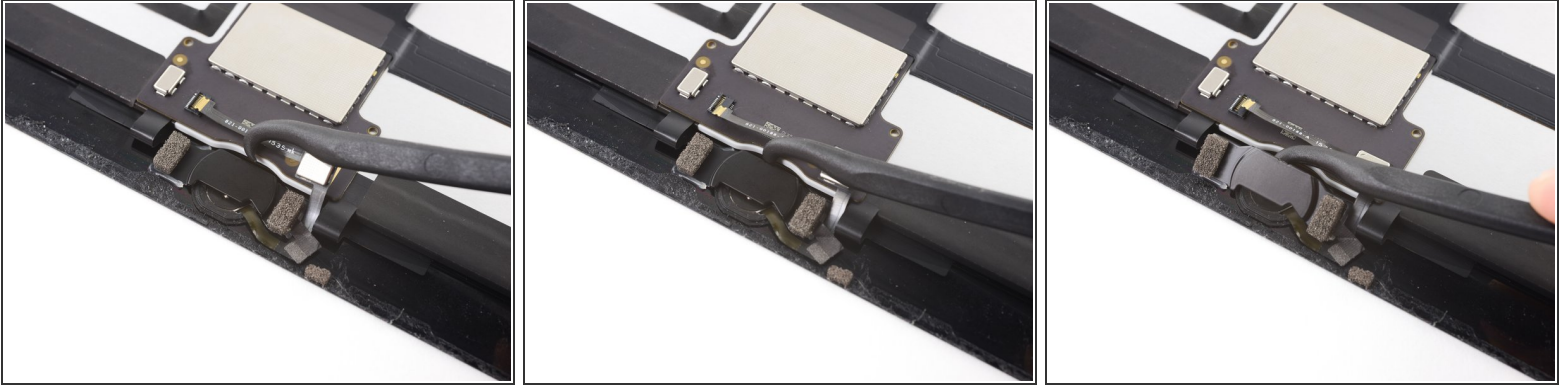


 The home button's ribbon cable is **very** fragile. If it gets damaged, or if the home button has to be replaced, Touch ID will no longer function.

- Use an iOpener, heat gun, or hair dryer to soften the adhesive under the cable before you pry it up.
- Starting from the ZIF connector, use the blade on a halberd spudger or the edge of an opening pick to separate the home button cable from the adhesive holding it in place. Stop when you reach the home button.



## Step 38



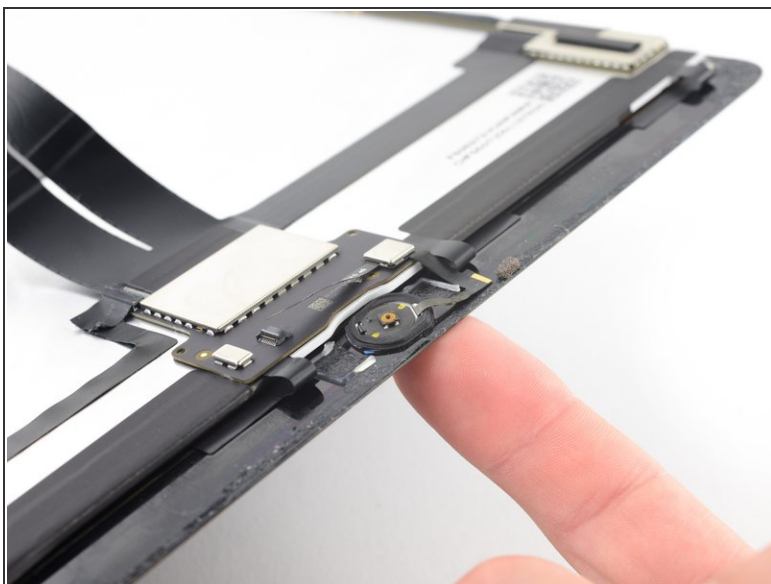
- Gently pry off the home button cover by inserting the hook of a halberd spudger or the flat edge of a regular spudger between the cover and the LCD, and gently prying towards the bottom edge of the iPad.
- ⓘ The hot-melt glue holding this bracket in place can be stubborn. Get it hot to make it easier to separate, and/or *very carefully* insert a razor blade under the bracket to separate it.

## Step 39



- Remove the home button bracket.
- ★ During reassembly, after installing the home button, you'll need to glue this bracket into place to secure it.
- Scrape off as much of the old adhesive residue as you can, then clean it with acetone or high-concentration (90% or greater) isopropyl alcohol.
- Secure the bracket with hot-melt glue, superglue, or [high-strength double-sided tape](#). Make sure the bracket is aligned correctly before allowing your adhesive to cure, or the home button will not click when pressed.

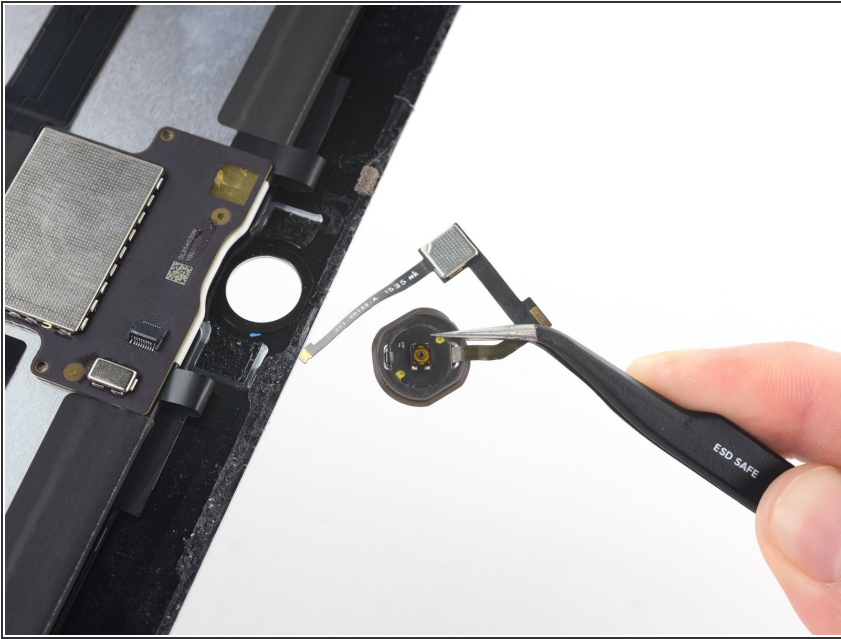
## Step 40



- Gently push the home button from the front of the display inward using the tip of a finger.

This document was generated on 2020-01-19 09:55:16 AM (MST).

## Step 41



- Remove the home button.

Compare your new replacement part to the original part. You may need to transfer remaining components or remove adhesive backings from the new part before installing. To reassemble your device, follow the above steps in reverse order. [Take your e-waste to an R2 or e-Stewards certified recycler](#). Repair didn't go as planned? Check out our [Answers community](#) for troubleshooting help.