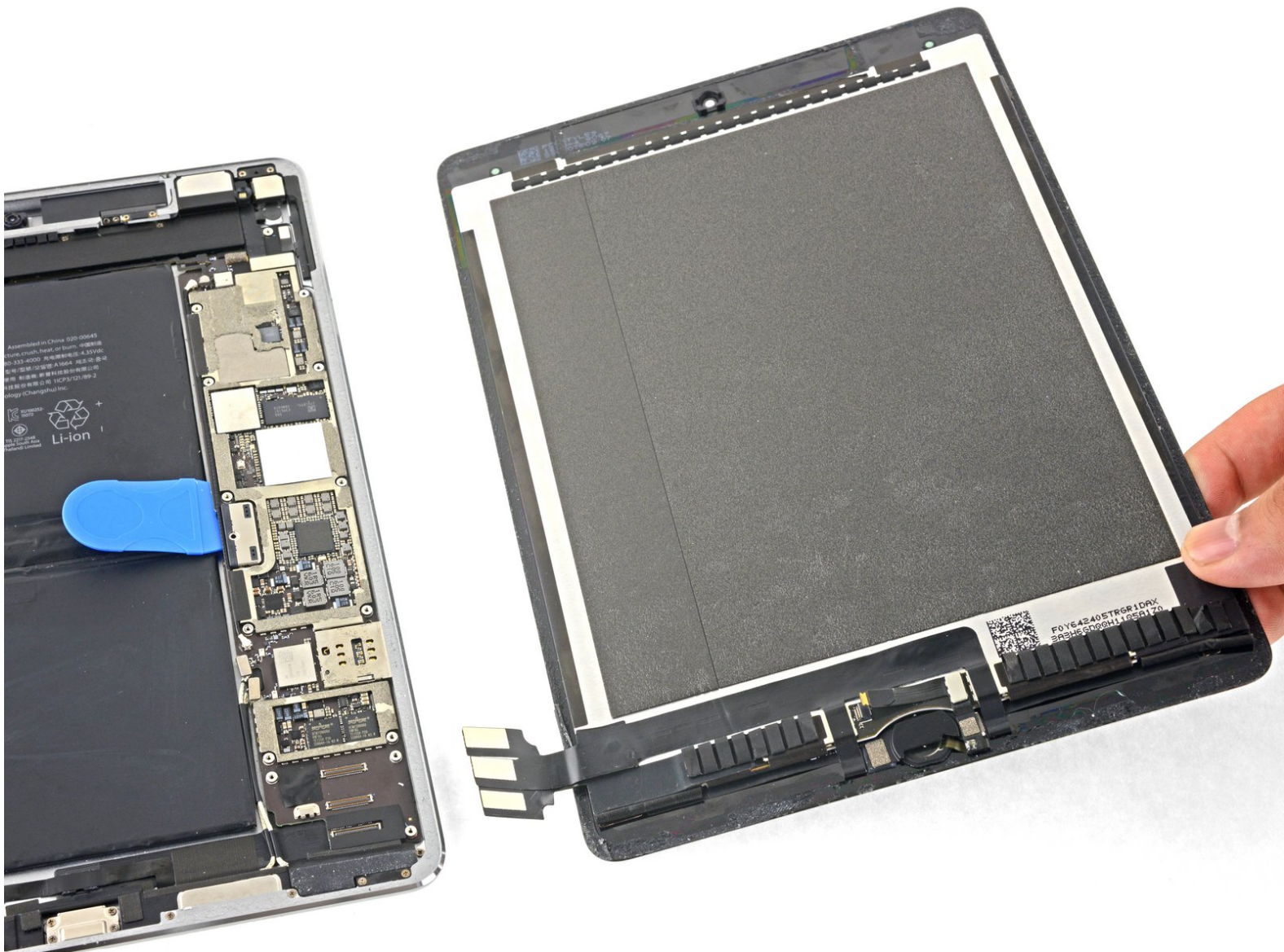




iPad Pro 9.7" Display Assembly Disconnect

Prerequisite only. This guide shows how to disconnect the iPad Pro's display assembly.

Written By: Arthur Shi



INTRODUCTION

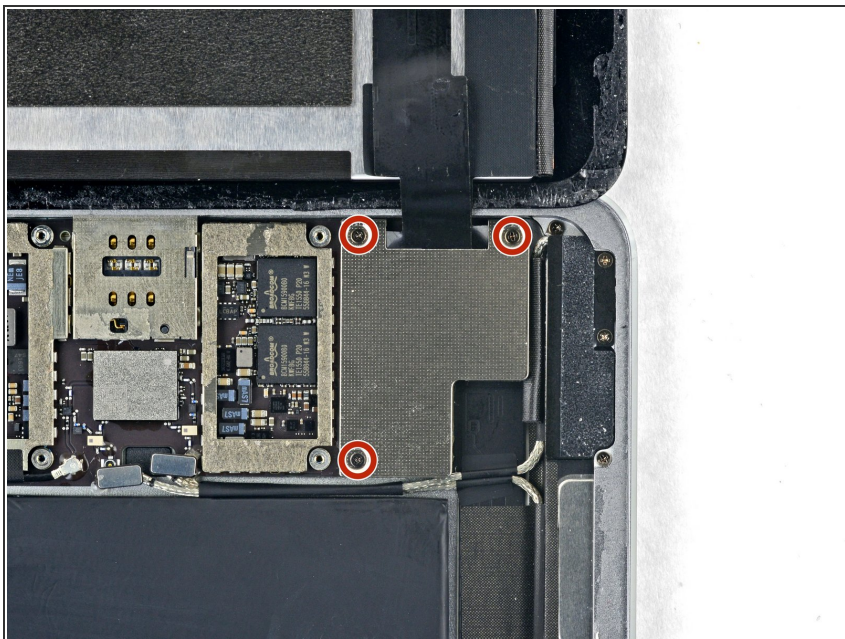
Prerequisite only. This guide shows how to disconnect the iPad Pro's display assembly.



TOOLS:

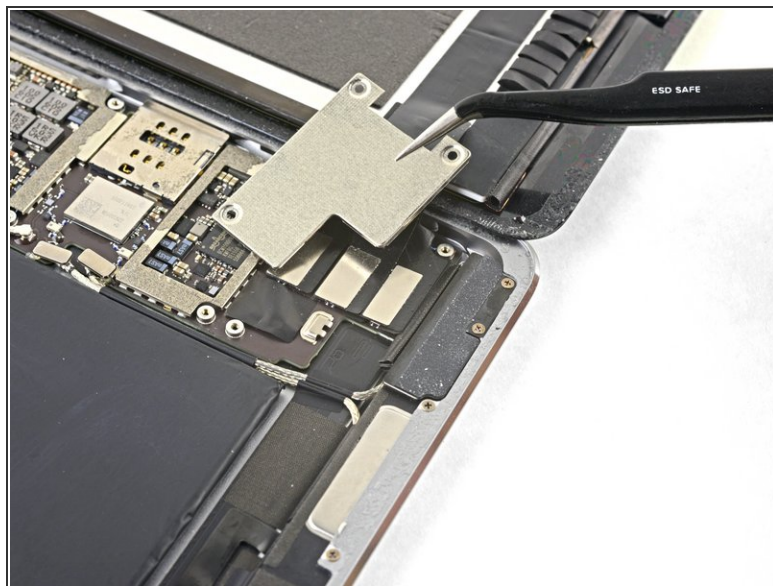
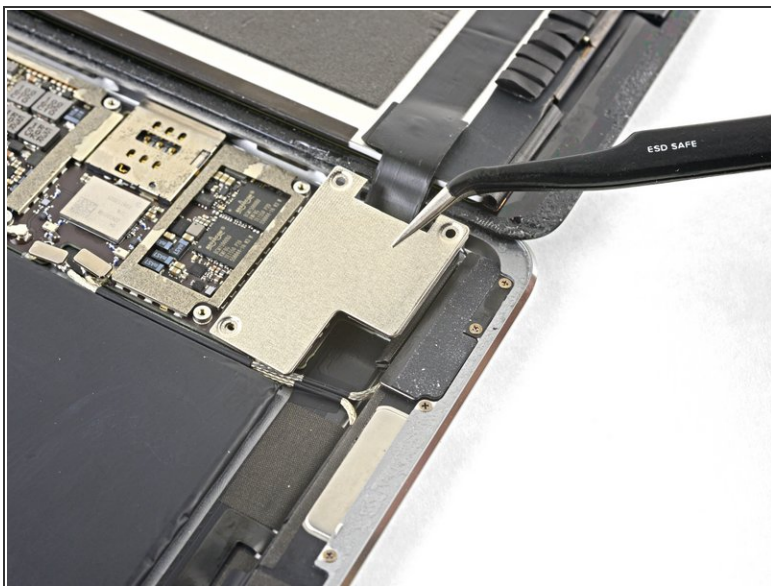
- [Tweezers](#) (1)
 - [Spudger](#) (1)
 - [Phillips #00 Screwdriver](#) (1)
-

Step 1 — iPad Pro 9.7" Display Assembly Disconnect



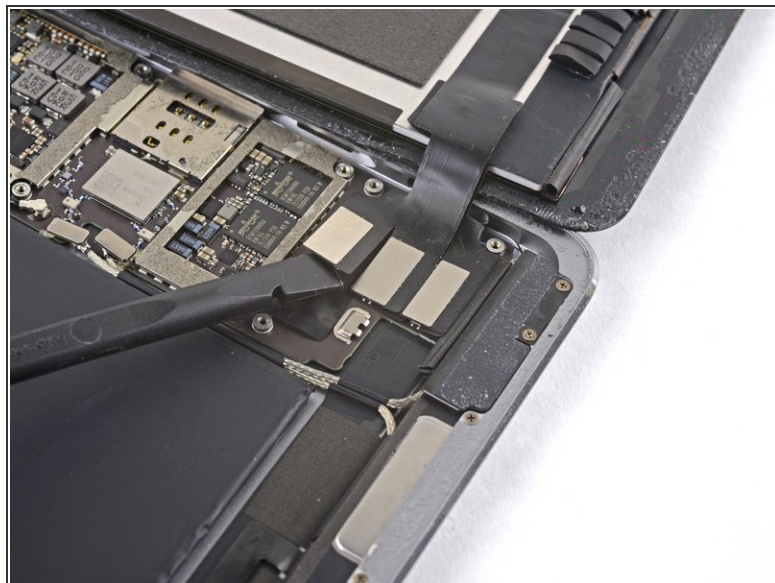
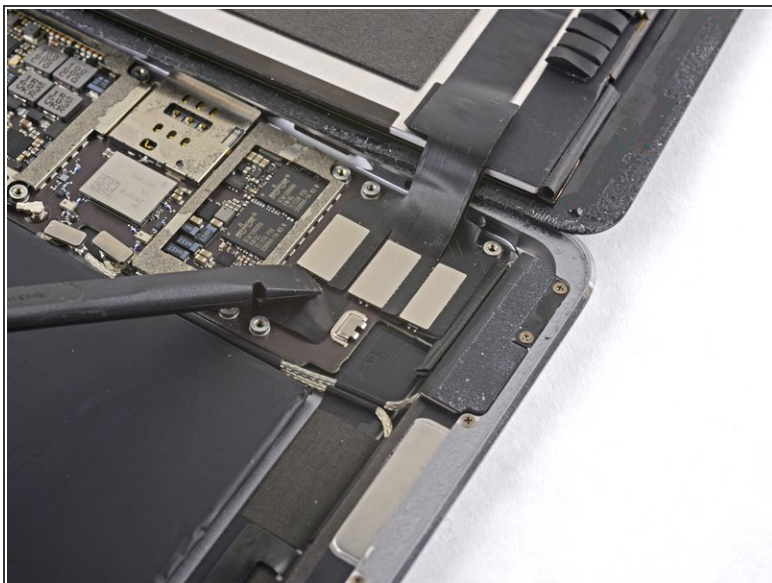
- Remove the three 1.3 mm Phillips #000 screws securing the display cable bracket.

Step 2



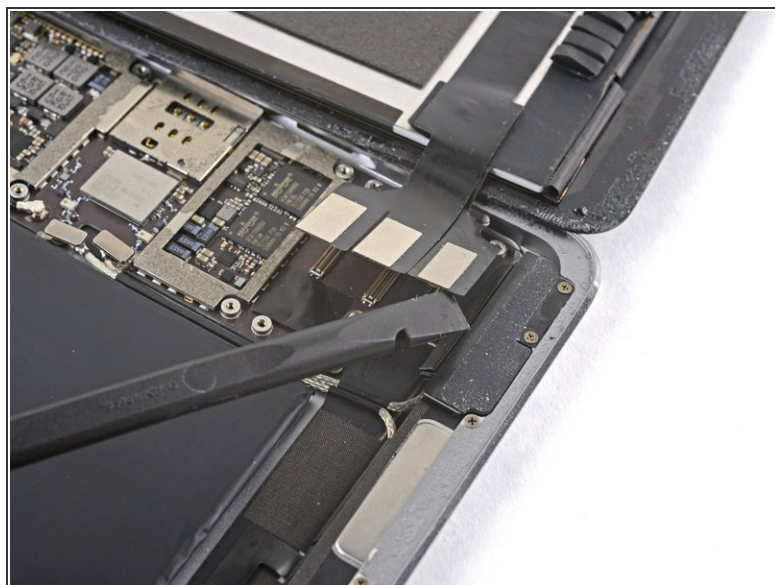
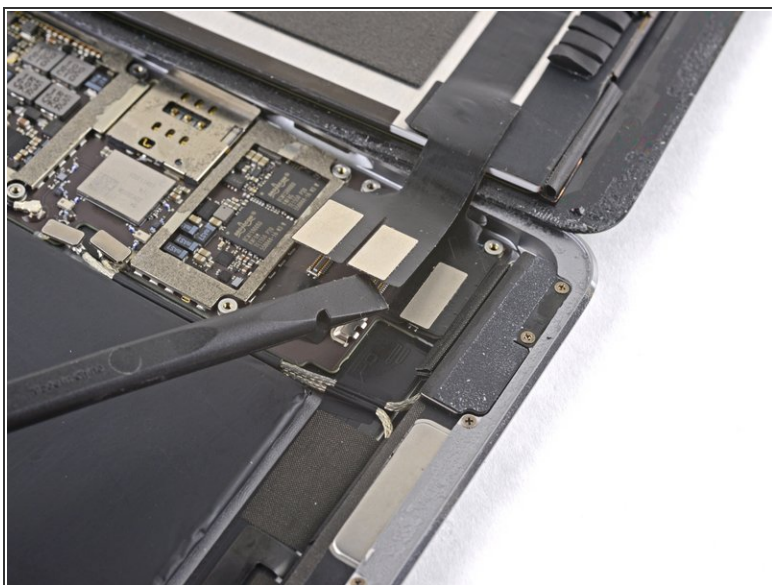
- Remove the display cable bracket.

Step 3



- Use the flat end of the spudger to disconnect the display assembly connector from the motherboard socket.

Step 4



- Repeat the previous step for the two remaining connectors.

Step 5



- Remove the display assembly.

✦ If you are reusing the original display assembly, [follow this display adhesive application guide](#) to apply replacement display adhesive during reassembly.

To reassemble your device, follow these instructions in reverse order.