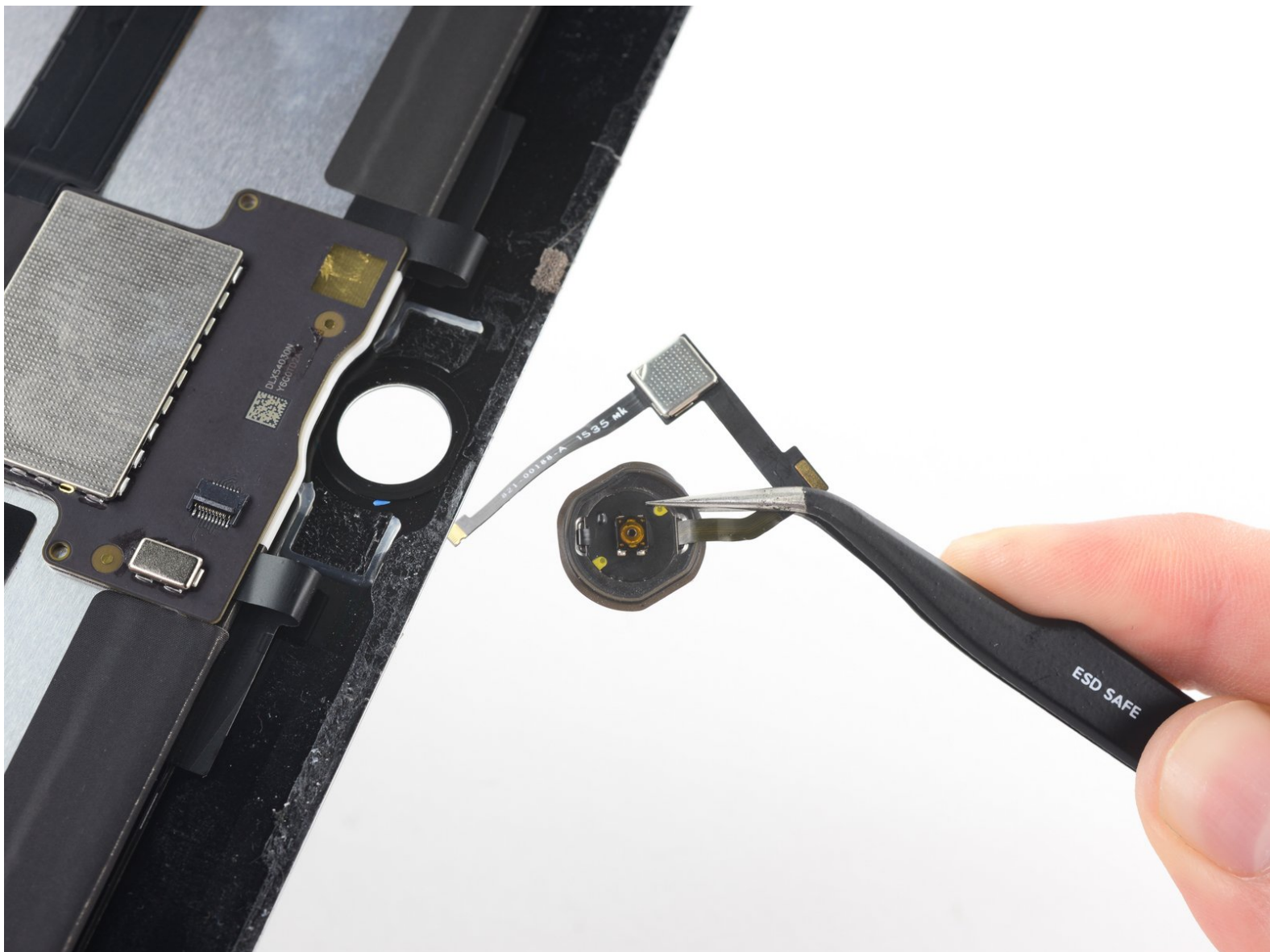




iPad Pro 9.7" Home Button Replacement

Remove and replace the home button for the iPad Pro 9.7".

Written By: Arthur Shi



INTRODUCTION

Follow this guide to remove and replace the home button in an iPad Pro 9.7".

Note: Your original home button assembly is paired to the iPad's logic board. You will lose Touch ID if any part of the home button assembly (button or cable) is replaced.



TOOLS:

- [Halberd Spudger](#) (1)
- [iOpener](#) (1)
- [Suction Handle](#) (1)
- [iFixit Opening Picks set of 6](#) (1)
- [Slip Joint Pliers](#) (1)
- [Battery Blocker](#) (1)
- [Tweezers](#) (1)
- [Spudger](#) (1)
- [Plastic Cards](#) (1)
- [Phillips #00 Screwdriver](#) (1)




PARTS:

- [iPad Pro 9.7" Adhesive Strips](#) (1)
- [iPad Pro 9.7" Home Button Assembly](#) (1)

Step 1 — iPad Pro 9.7" Opening Procedure



- If your display glass is cracked, keep further breakage contained and prevent bodily harm during your repair by taping the glass.
- Lay overlapping strips of clear packing tape over the iPad's display until the whole face is covered.
 - ⓘ This will keep glass shards contained and provide structural integrity when prying and lifting the display.
- Do your best to follow the rest of the guide as described. However, once the glass is broken, it will likely continue to crack as you work, and you may need to use a metal prying tool to scoop the glass out.

 Wear safety glasses to protect your eyes, and be careful not to damage the LCD screen.

Step 2



- i** The following steps involve using an iOpener to soften the adhesive holding the front panel assembly in place. When using the iOpener, be sure to heat it in the microwave for no more than 30 seconds.
- Handling it by the tabs on either end, place a heated iOpener over the top edge of the iPad.
 - Let the iOpener sit on the iPad for two minutes to soften the adhesive securing the front panel to the rest of the iPad.

Step 3



i While the iPad looks uniform from the outside, there are delicate components under certain portions of the front glass. To avoid damage, only heat and pry in the areas described in each step.

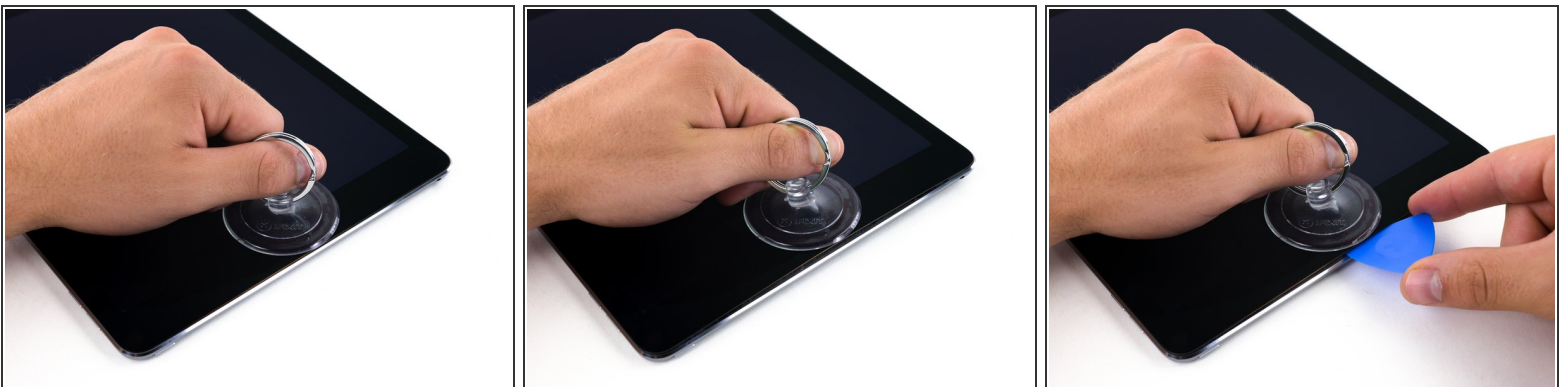
- As you follow the directions, take special care to avoid prying in the following areas:
 - Home Button
 - Front Facing Camera
 - Main Camera

Step 4



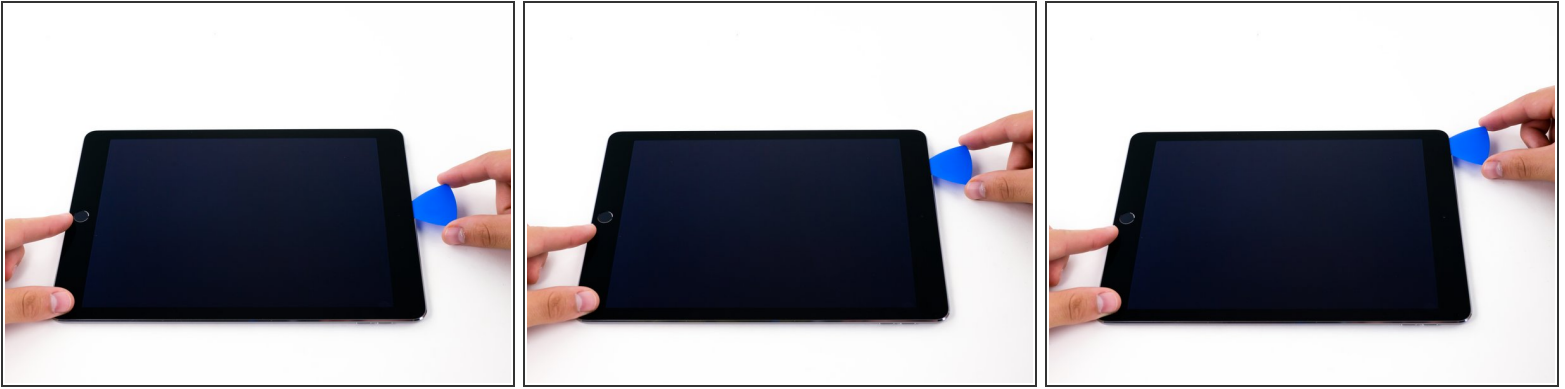
- Place a suction cup over the iPad's front-facing camera and press down to create a seal.
- ❗ To get the most leverage, place the suction cup as close to the edge as possible without going past the edge of the display.

Step 5



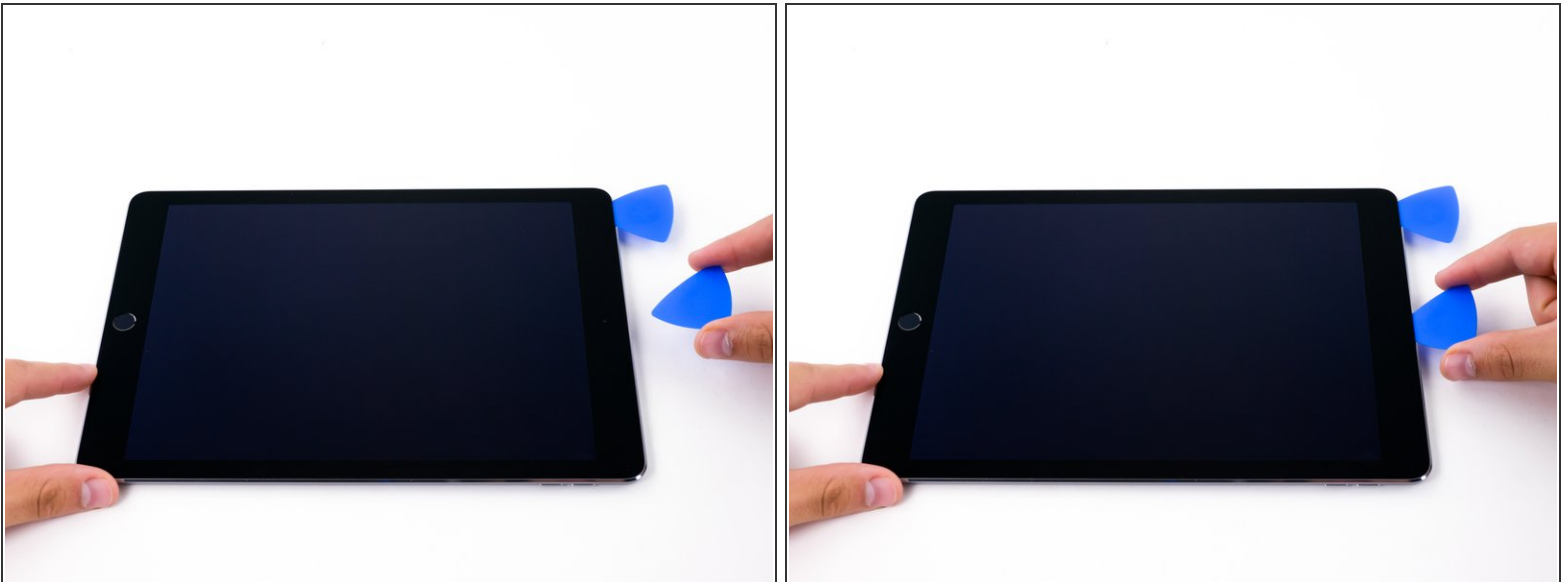
- Firmly pull up on the suction cup to create a small gap between the front panel and the rear case.
- ⚠ Do not pull too hard or you may shatter the glass.
- Once you've opened a sufficient gap, insert an opening pick into the gap to prevent the adhesive from resealing.

Step 6



- Slide the pick along the edge of the display, towards the headphone jack.
 - If there is still a considerable amount of resistance when sliding the opening pick, repeat the iOpener heating procedure and apply additional heat.
- ⚠ Don't insert the pick past the bezel into the display area, or you will damage it.
- ⓘ A good rule of thumb is to never insert the opening pick more than a quarter inch into the iPad.

Step 7



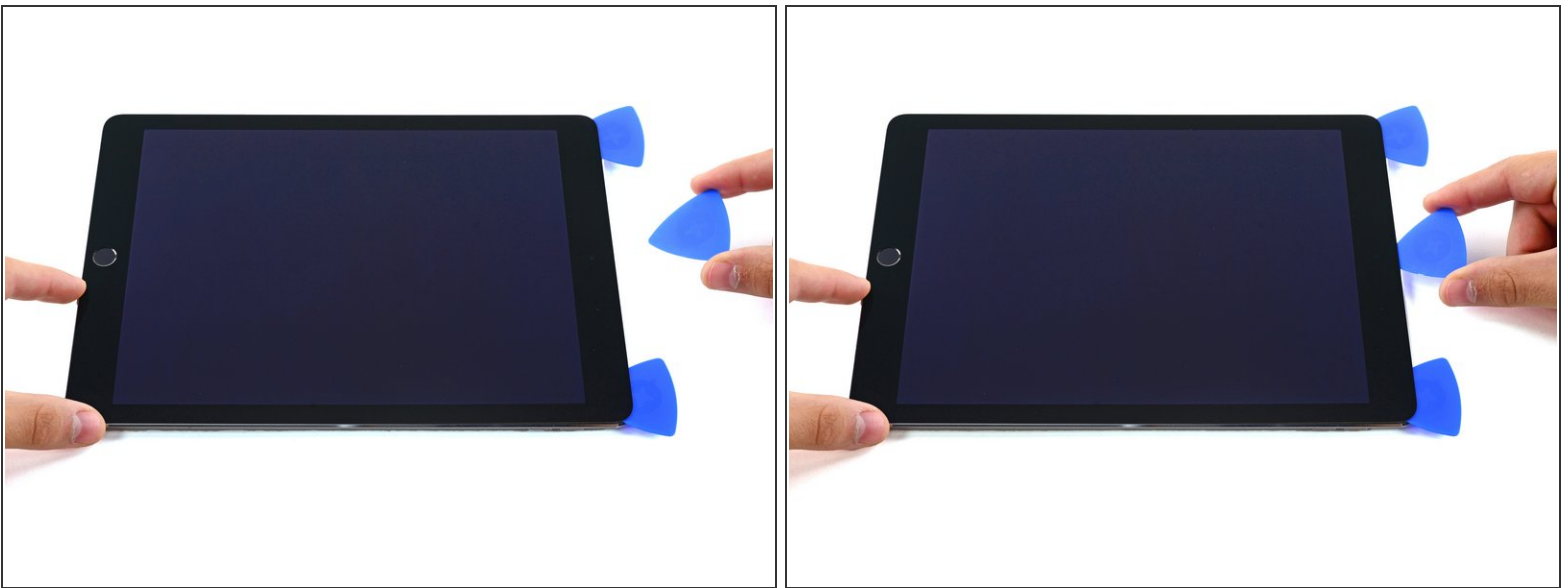
- Insert a second opening pick by the front-facing camera.

Step 8



- Slide the second pick along the top edge of the iPad, towards the Sleep/Wake Button.

Step 9



- Insert a third pick by the front-facing camera.

Step 10



- Bring the right opening pick down and around the top right corner of the iPad.

Step 11



- Bring the left opening pick around the top left corner of the tablet.

Step 12



- Reheat the iOpener and lay it over the right edge of the display to loosen the adhesive underneath.

Step 13



- Slide the right opening pick roughly halfway down the display.

Step 14



- Reheat the iOpener and apply heat to the left side of the iPad.

Step 15



- Slide the left-hand opening pick about halfway down the edge of the display.

Step 16



- Slide the opposite opening pick down to the bottom right corner of the iPad.
- ⓘ If necessary, reheat the adhesive on the right edge to loosen the display assembly.

Step 17



- Slide the left-hand opening pick down the edge of the display until you reach the corner.

Step 18



- Use the iOpener to apply heat to the bottom edge of the iPad.

Step 19



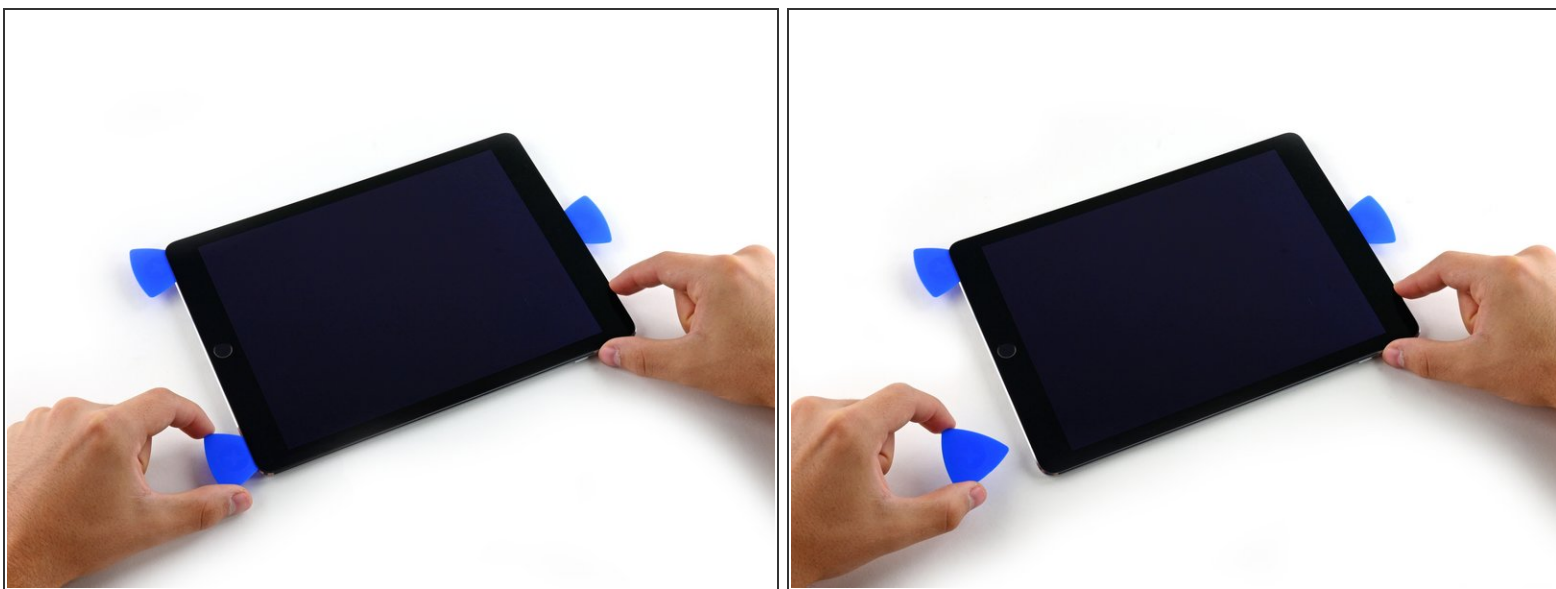
- Bring the right-hand opening pick around the bottom corner of the iPad.

Step 20



- Repeat for the left-hand pick.
- ⓘ Reheat and reapply the iOpener as needed.

Step 21




- Remove the right-hand opening pick at the bottom of the iPad.

Step 22



- Slide the left-hand opening pick along the bottom edge of the display, then remove it from the bottom right corner of the iPad.

 Be very careful to not insert the pick more than a quarter inch into the display to avoid damaging the Home Button and display cables underneath.

Step 23 — iPad Pro 9.7" Opening Display Assembly



- Use picks to ensure most of the adhesive has been cut through on the top, left, and bottom sides.
- Twist the top and bottom picks to separate the display assembly from the rear case.

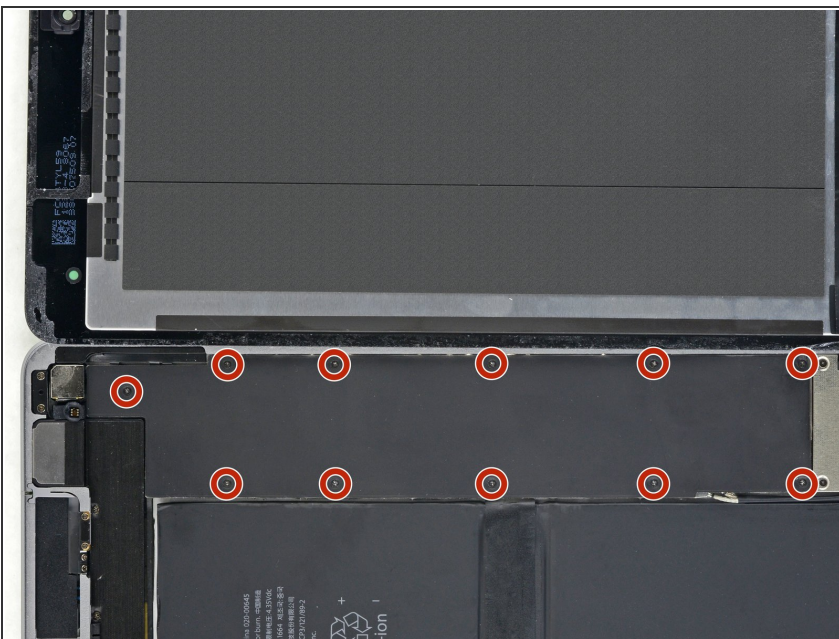
 Do not attempt to remove the display—it is still attached to the rear case.

Step 24



- Swing the display assembly towards the right of the case, using the right edge as a hinge.
 - As you move the display assembly, make sure that the display ribbon cable is not being stressed.
- Continue swinging the display assembly until it lays flat next to the rear case.

Step 25 — iPad Pro 9.7" Battery Disconnect



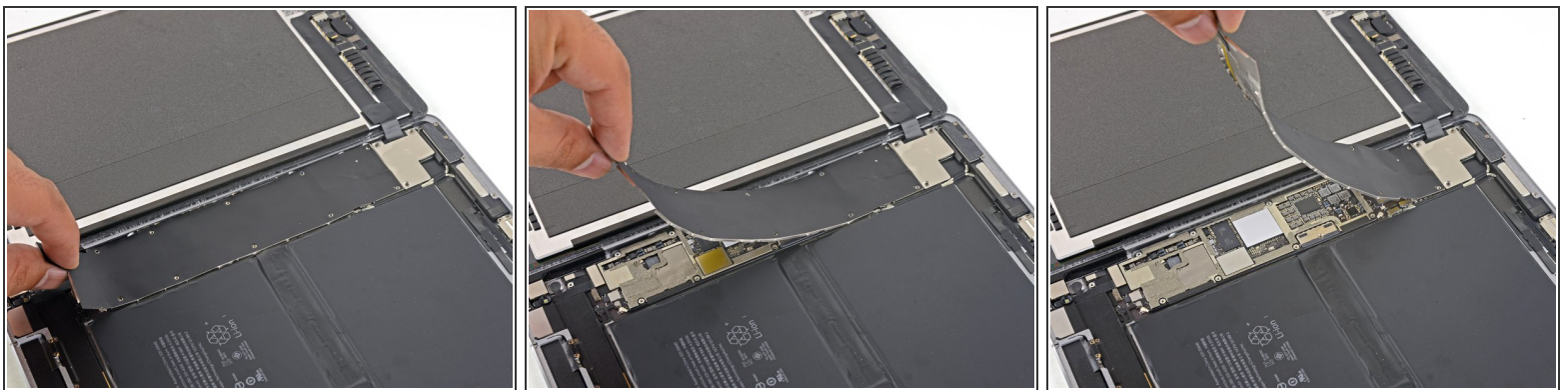
- Remove the eleven 1.3 mm Phillips screws securing the EMI shield.

Step 26



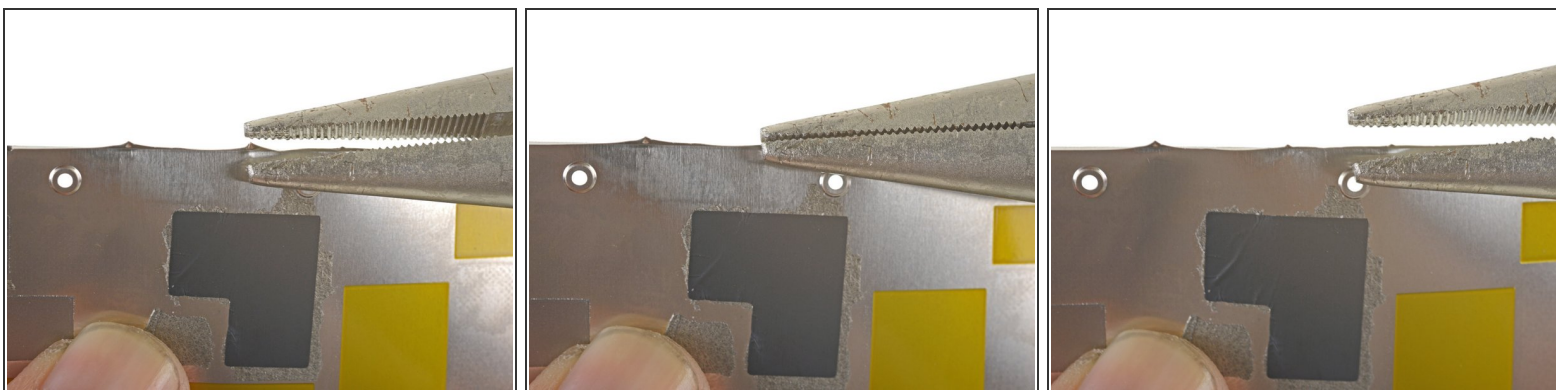
- Apply a [heated iOpener](#) to the EMI shield on the logic board for one minute.

Step 27



- Lift the logic board EMI shield, starting at the edge nearest the top of the iPad.
- Slowly peel the EMI shield up from the logic board.
 - ⓘ This takes a bit of force due to the many tiny clips securing the shield, and the shield may deform slightly. That's okay—try to keep the deformation to a minimum, and it will lay flat when reinstalled and screwed down.
- Remove the logic board EMI shield.

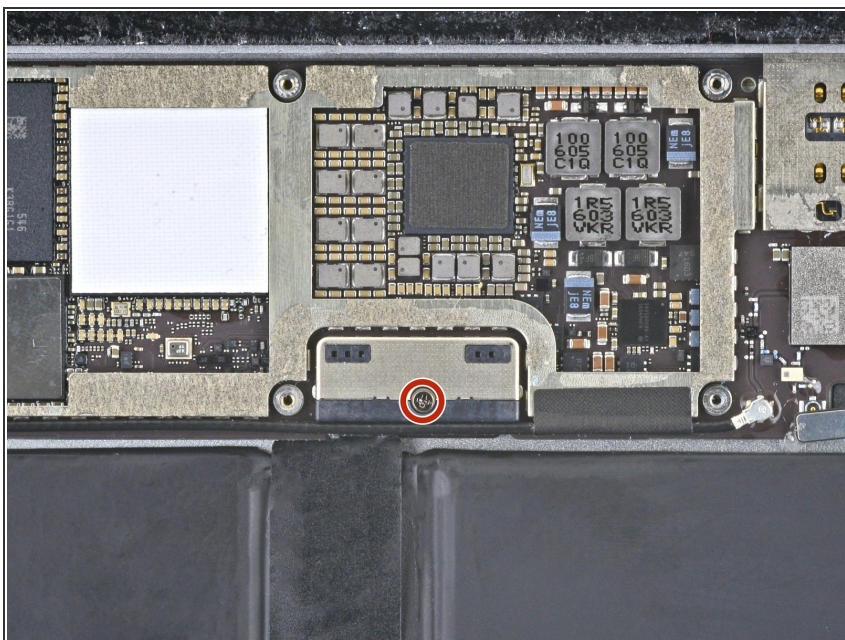
Step 28



✦ If the EMI shield has any sharp protrusions after removal, you should flatten them before reinstalling the shield.

- Squeeze the sharp protrusion with a pair of pliers to flatten it.
- Repeat the process for all sharp protrusions along the edges of the EMI shield.

Step 29



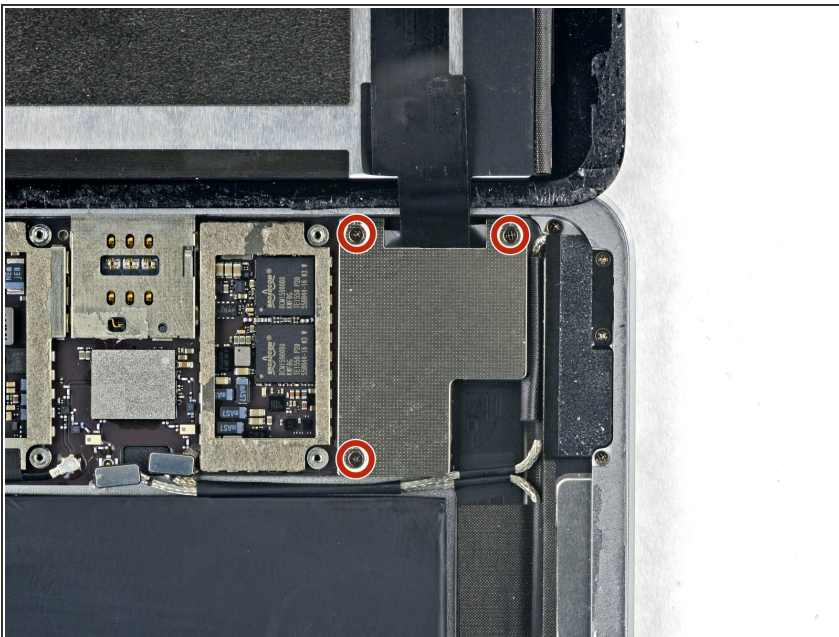
- Remove the 1.8 mm Phillips screw securing the battery connector.

Step 30



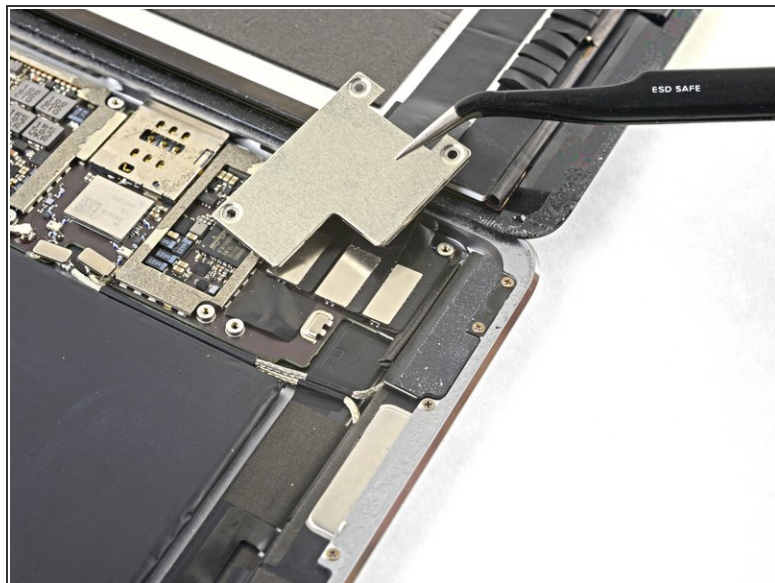
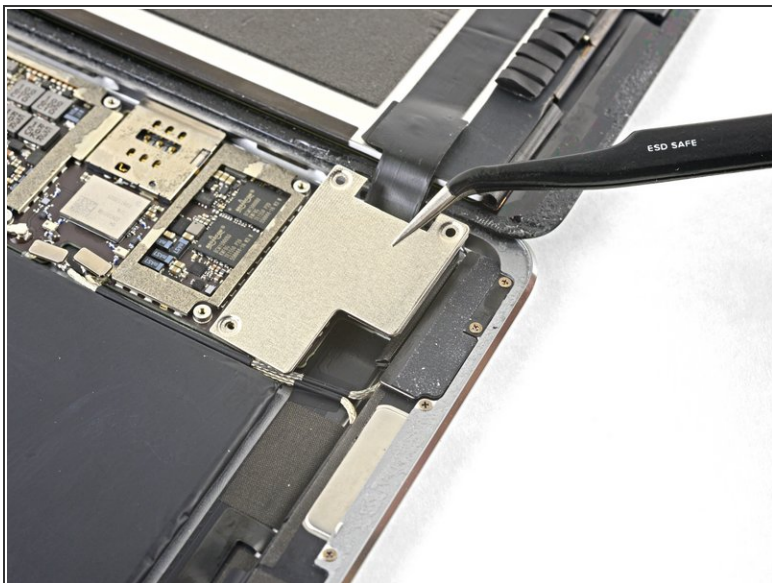
- Disconnect the battery by inserting a Battery Blocker underneath the logic board to isolate it from the battery's contacts.
 - ⓘ [Insert the Battery Blocker at a slight angle first](#) with one side under the logic board, then slide the rest in over the battery contacts.
 - ⓘ This may require carefully applied force as the logic board has adhesive holding it onto the case.
- Unless specified otherwise, leave the Battery Blocker in place until you have completed your repairs.

Step 31 — iPad Pro 9.7" Display Assembly Disconnect



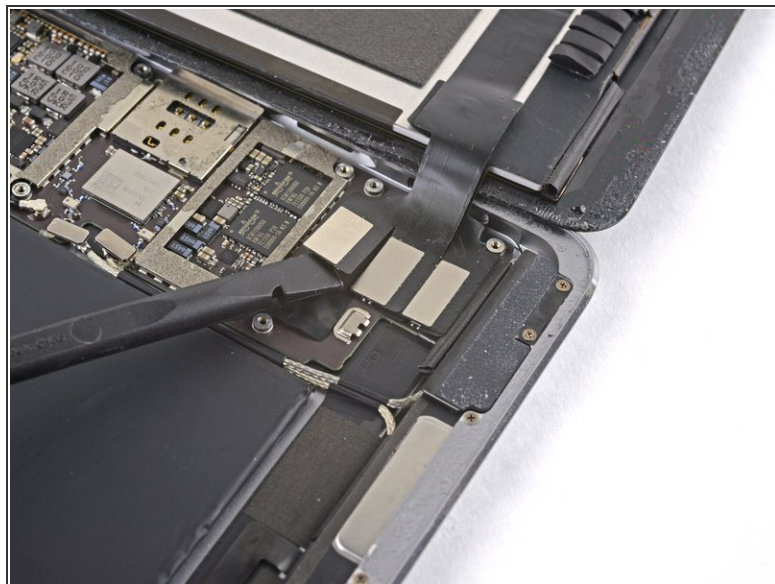
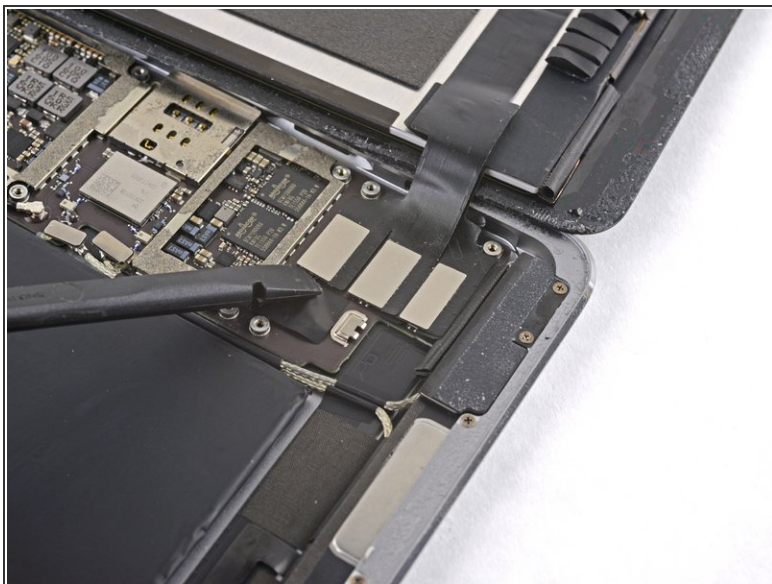
- Remove the three 1.3 mm Phillips #000 screws securing the display cable bracket.

Step 32



- Remove the display cable bracket.

Step 33



- Use the flat end of the spudger to disconnect the display assembly connector from the motherboard socket.

Step 34



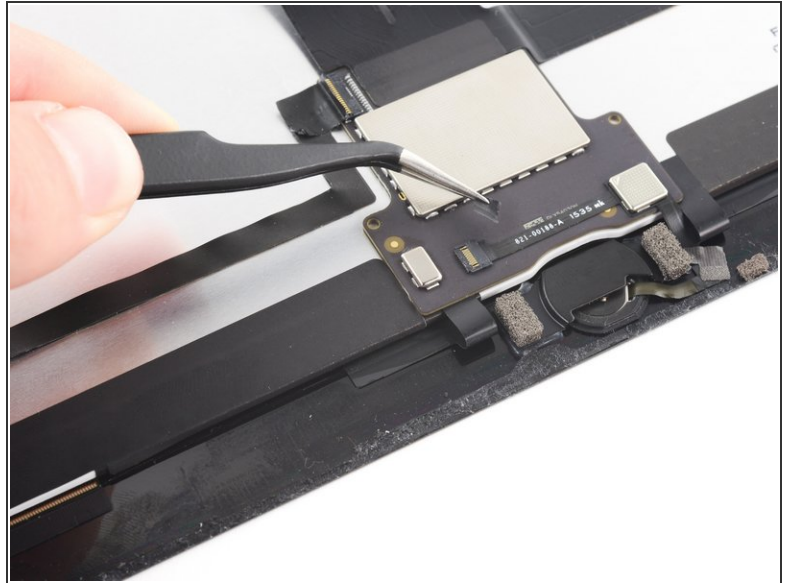
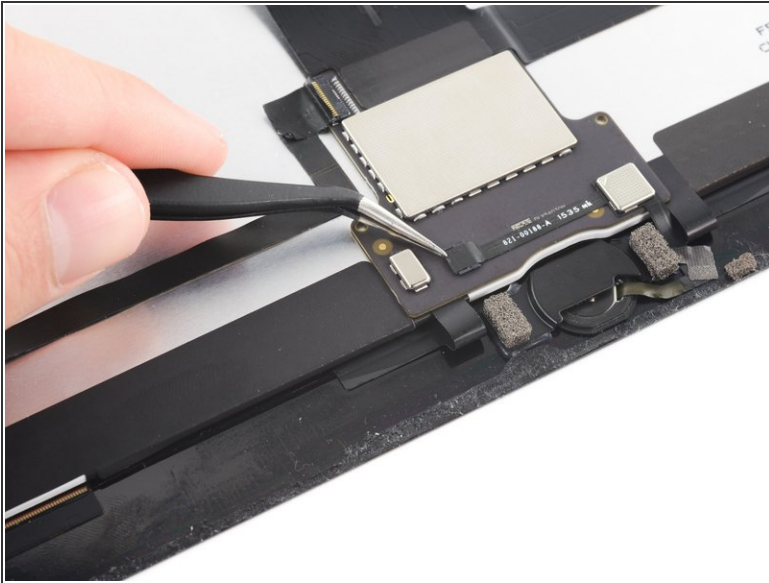
- Repeat the previous step for the two remaining connectors.

Step 35



- Remove the display assembly.
- ☑ If you are reusing the original display assembly, [follow this display adhesive application guide](#) to apply replacement display adhesive during reassembly.

Step 36 — Home Button



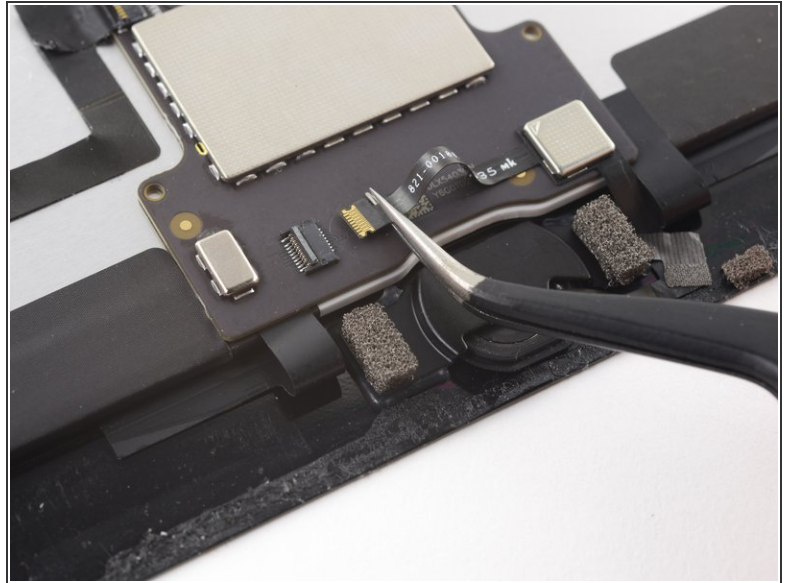
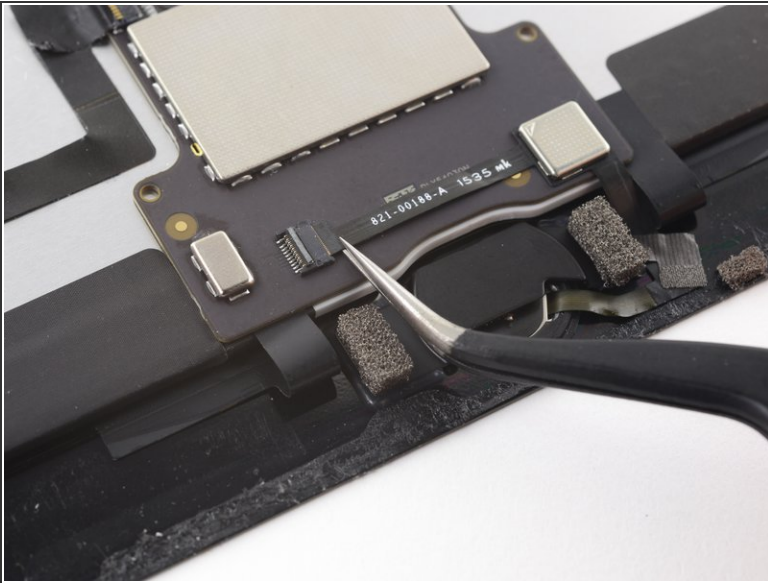
- Remove the tape covering the ZIF connector above the home button.

Step 37



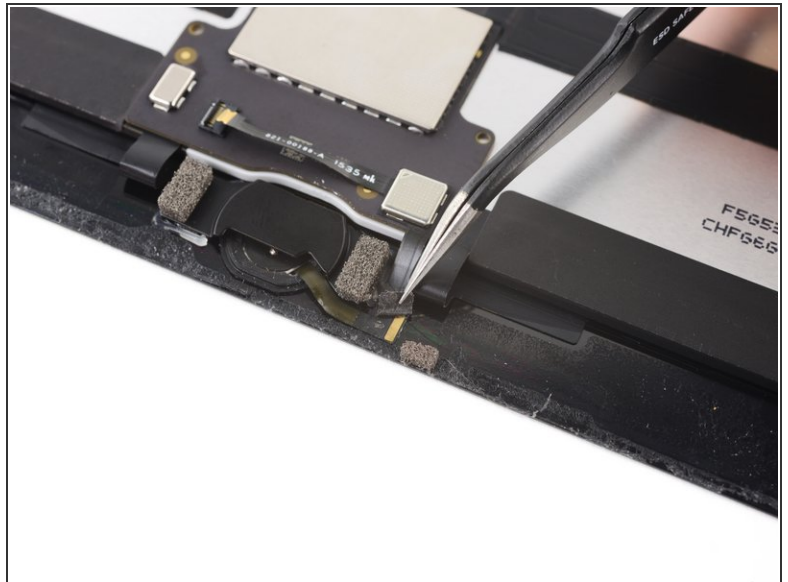
- Use the flat edge of a spudger to lift the flap on the connector that secures the cable.

Step 38



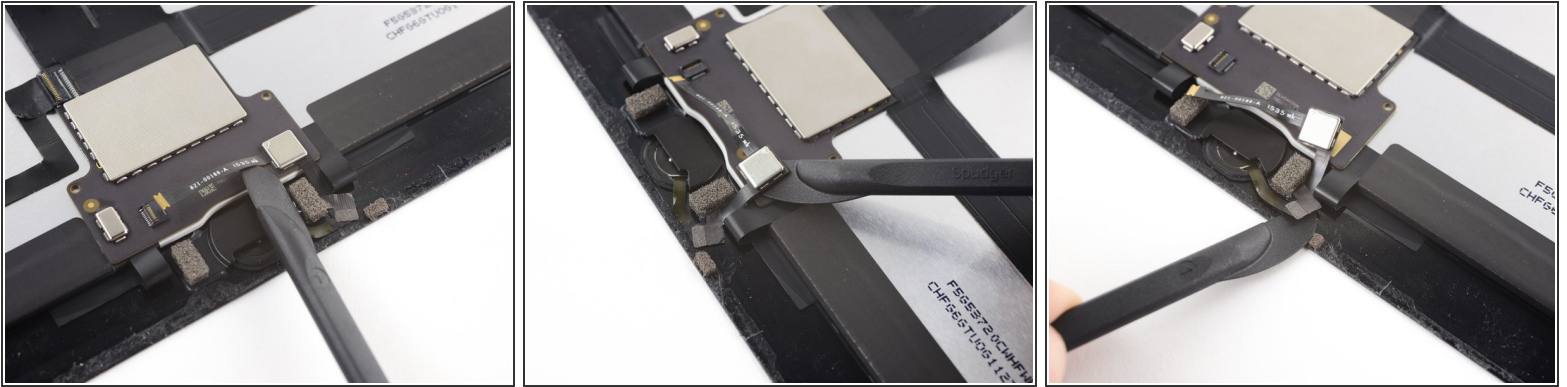
- Pull the cable out of the ZIF connector.


Step 39



- Use tweezers to remove the tape that covers the home button cable.

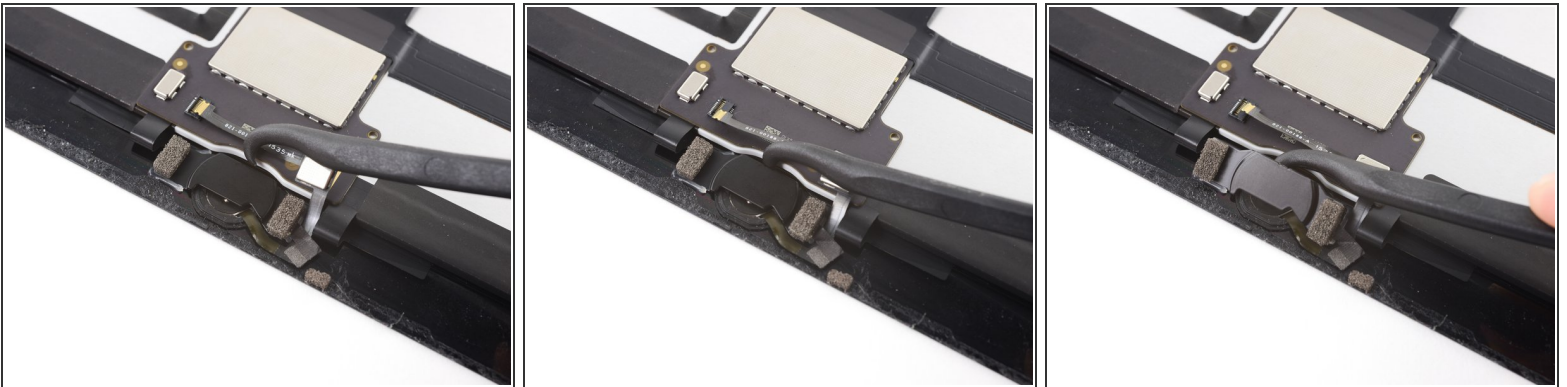
Step 40



 The home button's ribbon cable is **very** fragile. If it gets damaged, or if the home button has to be replaced, Touch ID will no longer function.

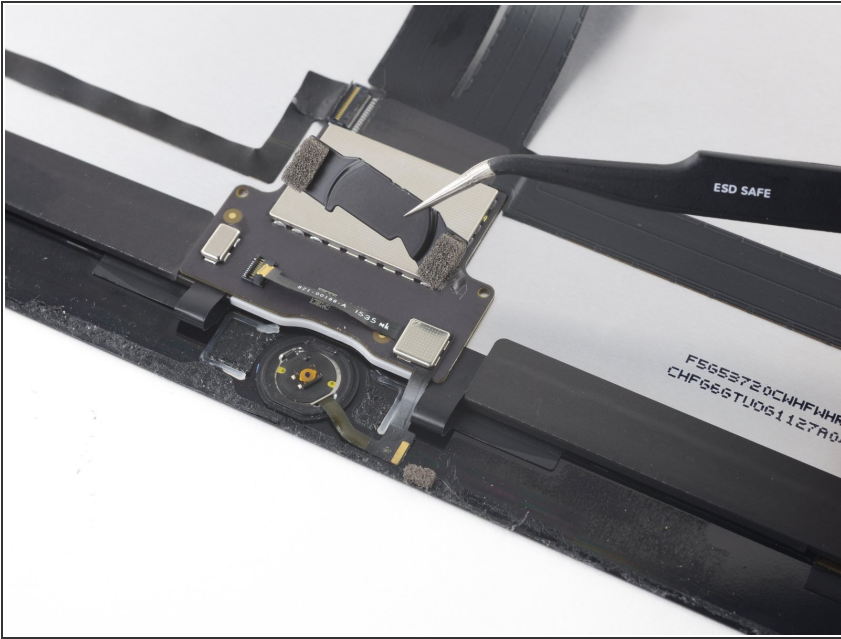
- Use an iOpener, heat gun, or hair dryer to soften the adhesive under the cable before you pry it up.
- Starting from the ZIF connector, use the blade on a halberd spudger or the edge of an opening pick to separate the home button cable from the adhesive holding it in place. Stop when you reach the home button.

Step 41



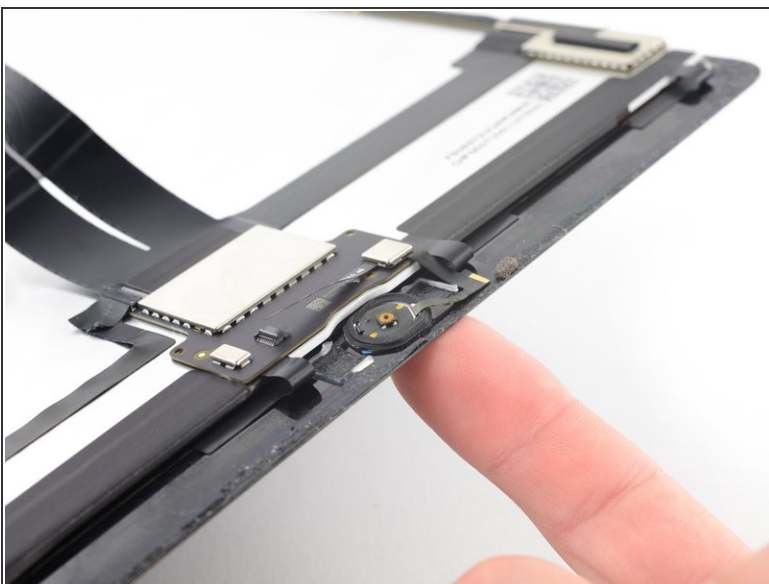
- Gently pry off the home button cover by inserting the hook of a halberd spudger or the flat edge of a regular spudger between the cover and the LCD, and gently prying towards the bottom edge of the iPad.
- ⓘ The hot-melt glue holding this bracket in place can be stubborn. Get it hot to make it easier to separate, and/or *very carefully* insert a razor blade under the bracket to separate it.

Step 42



- Remove the home button bracket.
- ★ During reassembly, after installing the home button, you'll need to glue this bracket into place to secure it.
- Scrape off as much of the old adhesive residue as you can, then clean it with acetone or high-concentration (90% or greater) isopropyl alcohol.
- Secure the bracket with hot-melt glue, superglue, or [high-strength double-sided tape](#). Make sure the bracket is aligned correctly before allowing your adhesive to cure, or the home button will not click when pressed.

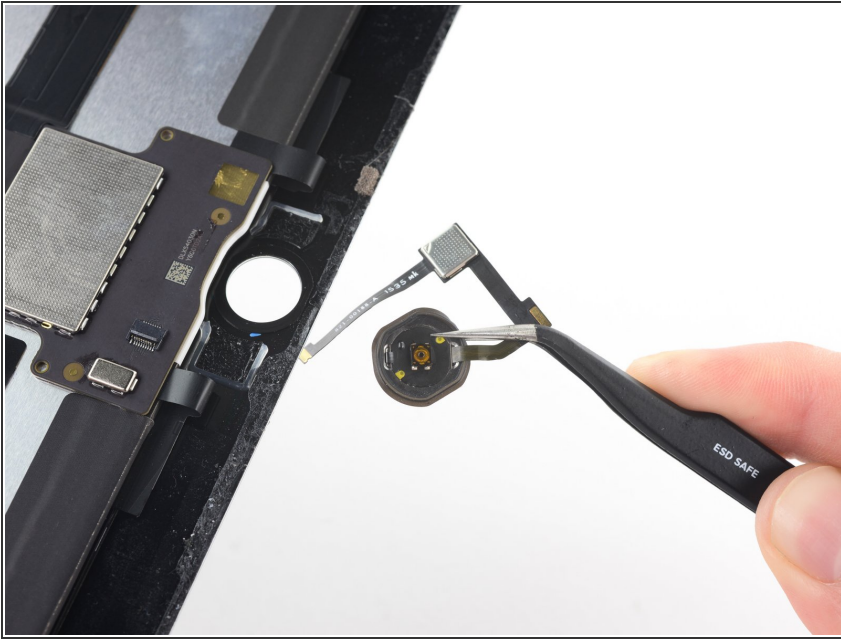
Step 43



- Gently push the home button from the front of the display inward using the tip of a finger.

This document was generated on 2020-01-19 04:32:37 AM (MST).

Step 44



- Remove the home button.

Compare your new replacement part to the original part. You may need to transfer remaining components or remove adhesive backings from the new part before installing.

To reassemble your device, follow the above steps in reverse order. [Take your e-waste to an R2 or e-Stewards certified recycler.](#)

Repair didn't go as planned? Check out our [Answers community](#) for troubleshooting help.