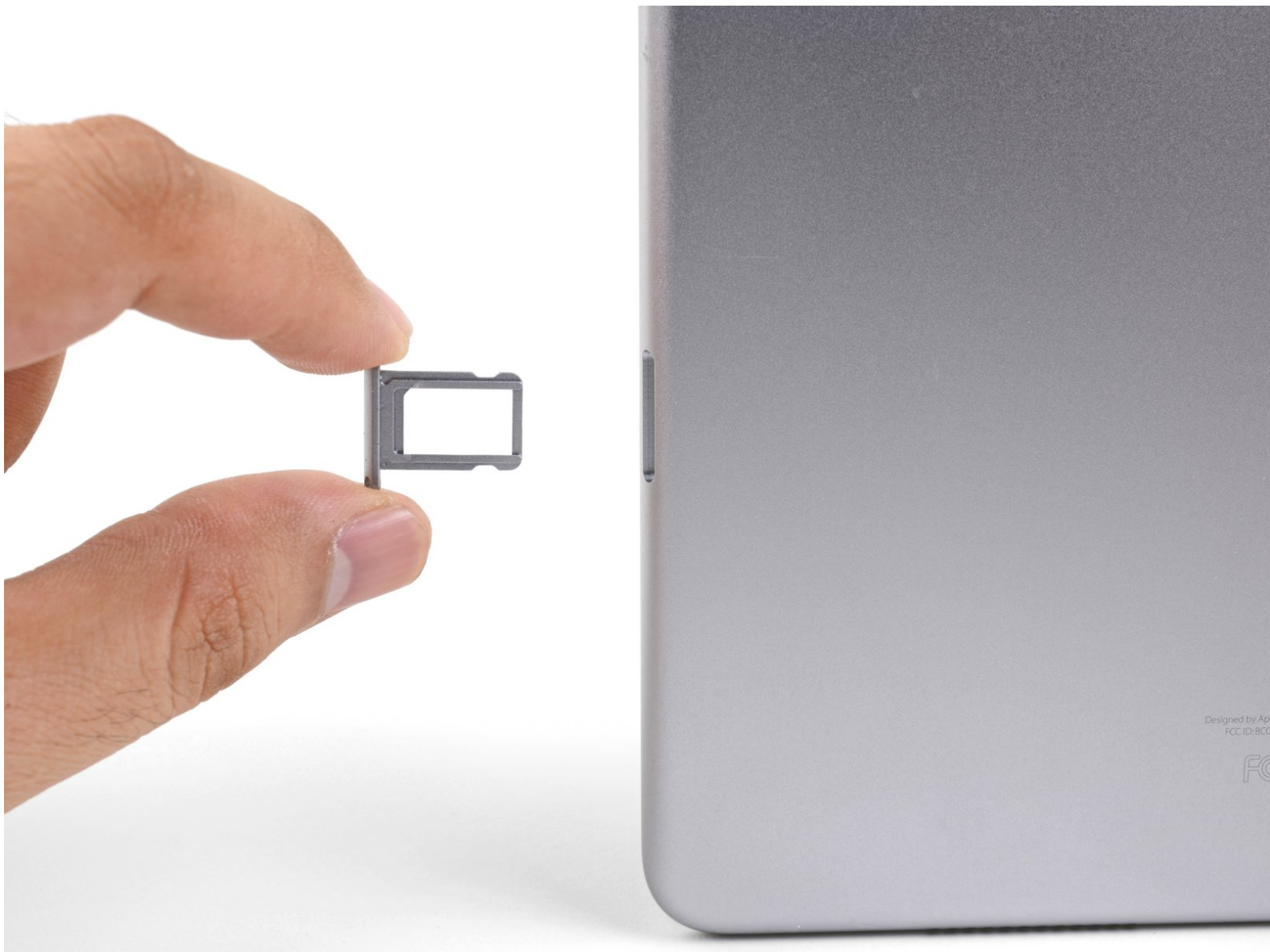




iPad Pro 9.7" SIM Card Tray Replacement

Remove and replace the SIM card tray in a cellular enabled model of the iPad Pro 9.7".

Written By: Arthur Shi



INTRODUCTION

Follow this guide to remove and replace the SIM card tray in your cellular enabled model of the iPad Pro 9.7".



TOOLS:

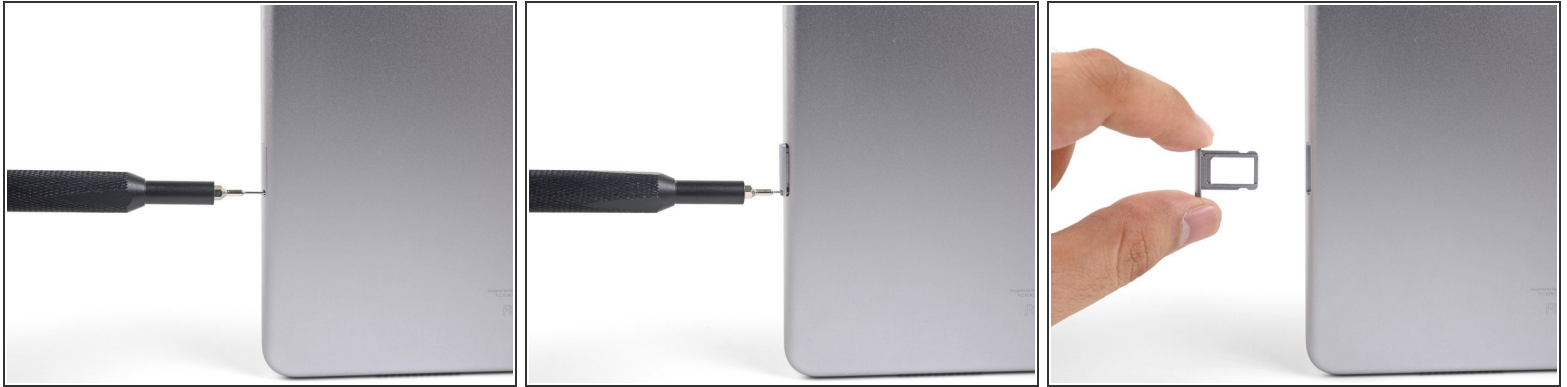
- [SIM Card Eject Tool](#) (1)



PARTS:

- [iPad Pro 9.7" & 12.9" SIM Card Tray](#) (1)

Step 1 — SIM Card Tray



- Insert a SIM card eject tool, bit, or a paperclip into the small hole in the SIM card tray, located near the bottom edge of the iPad.
- Press firmly to eject the tray.
- Remove the SIM tray.

To reassemble your device, follow these instructions in reverse order.

Repair didn't go as planned? Check out our [Answers community](#) for troubleshooting help.