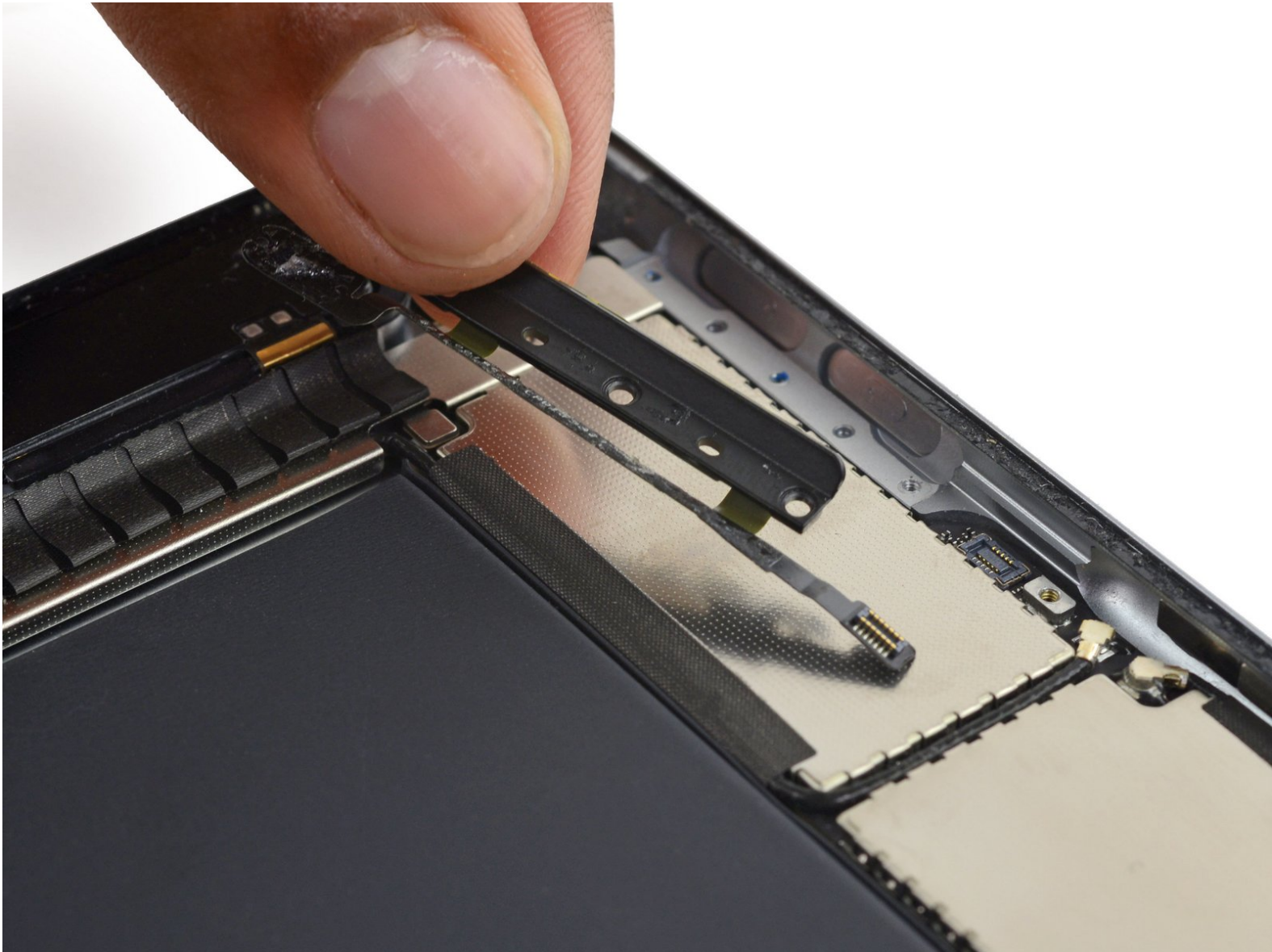




iPad mini 4 Wi-Fi Volume Control Buttons Replacement

Replace the volume control buttons in an iPad mini 4 Wi-Fi.

Written By: Evan Noronha



INTRODUCTION

Use this guide to replace the volume control buttons in an iPad mini 4 Wi-Fi.



TOOLS:

- [Phillips #00 Screwdriver](#) (1)
- [Spudger](#) (1)
- [iOpener](#) (1)
- [iFixit Opening Picks set of 6](#) (1)
- [Suction Handle](#) (1)



PARTS:

- [iPad mini 4 Volume Button Cable](#) (1)

Step 1 — iOpener Heating



- ⓘ We recommend that you clean your microwave before proceeding, as any nasty gunk on the bottom may end up stuck to the iOpener.
- Place the iOpener in the center of the microwave.
- ⚠ For carousel microwaves: Make sure the plate spins freely. If your iOpener gets stuck, it may overheat and burn.

Step 2




- Heat the iOpener for **thirty seconds**.
- Throughout the repair procedure, as the iOpener cools, reheat it in the microwave for an additional thirty seconds at a time.

- ⚠ Be careful not to overheat the iOpener during the repair. Overheating may cause the iOpener to burst.
- ⚠ Never touch the iOpener if it appears swollen.
- ⚠ If the iOpener is still too hot in the middle to touch, continue using it while waiting for it to cool down some more before reheating. A properly heated iOpener should stay warm for up to 10 minutes.

Step 3



- Remove the iOpener from the microwave, holding it by one of the two flat ends to avoid the hot center.

 The iOpener will be very hot, so be careful when handling it. Use an oven mitt if necessary.

Step 4 — Opening Procedure




- Handling it by the tabs on either side, place the heated iOpener on the side of the iPad to the left of the home button assembly.
- Let the iOpener sit for about five minutes to soften the adhesive beneath the glass.

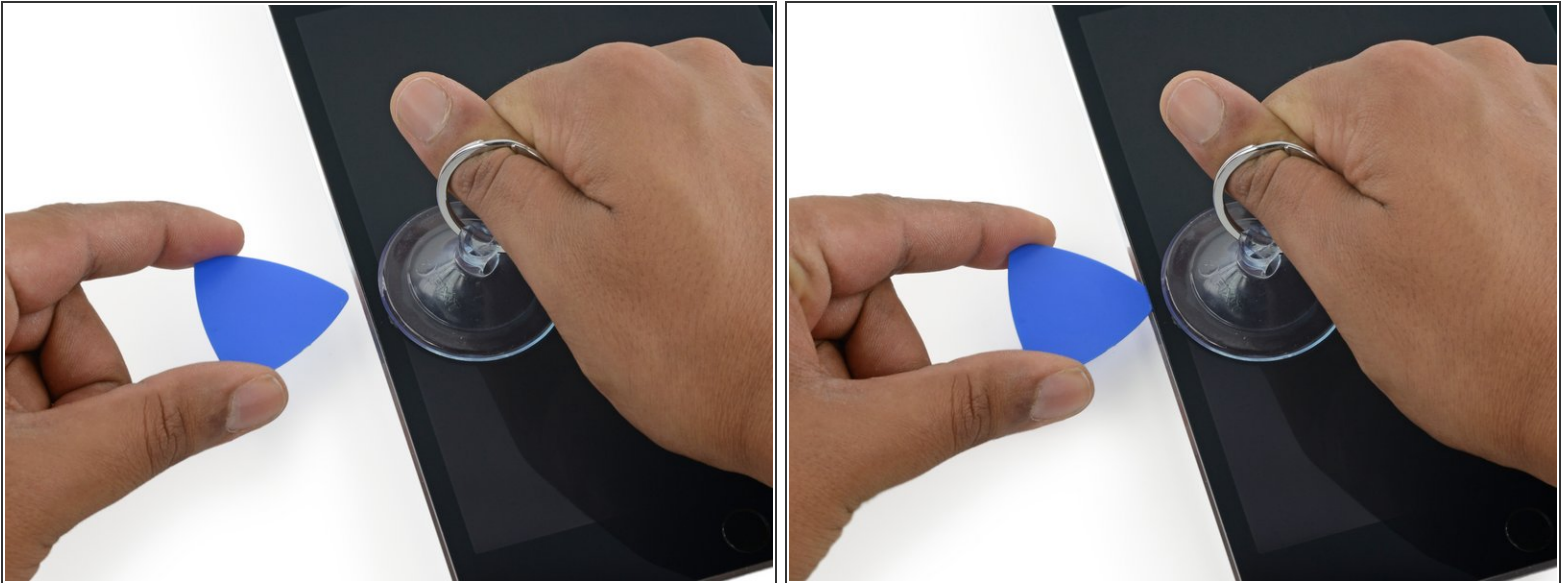
Step 5




- Carefully place a suction cup halfway up the heated side.
- Be sure the cup is completely flat on the screen to get a tight seal.
- While holding the iPad down with one hand, pull up on the suction cup to slightly separate the front panel assembly from the rear case.

 Be careful to only lift the glass enough to insert an opening pick—any more and you risk cracking the glass.


Step 6



- While holding the glass up with the suction cup, slide the point of an opening pick into the gap between the glass and body of the iPad.
-  Don't insert the opening pick any deeper than 2 mm into the side of the display. Inserting the pick deeper than 2 mm could damage the backlight assembly, LCD display, or touchscreen.

Step 7




- Reheat and reapply the iOpener.
-  Be careful not to overheat the iOpener during the repair procedure. Always wait at least ten minutes before reheating the iOpener.
- Let it rest for a few minutes to reheat the left edge of the iPad.

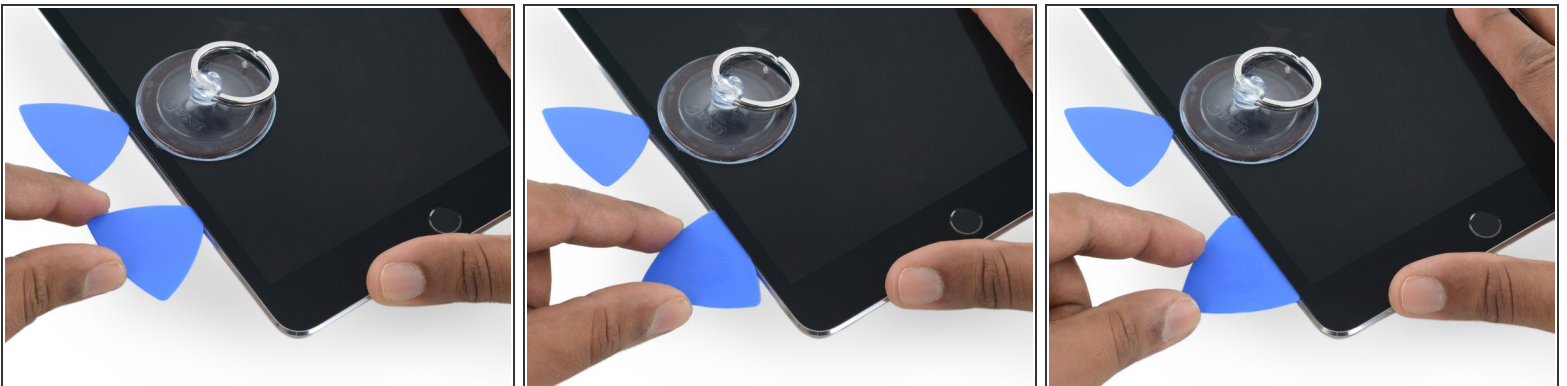
Step 8



- Place a second opening pick alongside the first and slide the pick down along the edge of the iPad, releasing the adhesive as you go.

 Throughout the rest of the procedure, if you encounter significant resistance to sliding picks beneath the glass, stop and reheat the section you're working on. Applying too much pressure with the pick can crack the glass.

Step 9



- Continue moving the opening pick down the side of the display to release the adhesive.
- If the opening pick gets stuck in the adhesive, "roll" the pick along the side of the iPad, continuing to release the adhesive.

Step 10



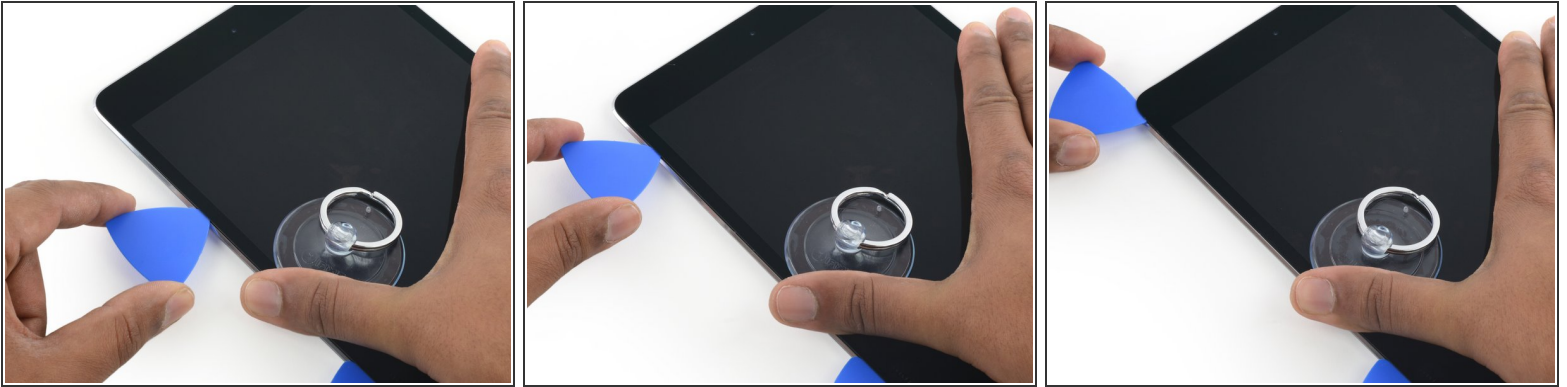
- Take the first pick you inserted and slide it up toward the top corner of the iPad.

Step 11



- Reheat the iOpener and place it on the top edge of the iPad, over the front-facing camera.
- ⚠ Be careful not to overheat the iOpener during the repair procedure. Wait at least ten minutes before reheating the iOpener.
- If you have a flexible iOpener, you can bend it to heat both the upper left corner and the upper edge at the same time.


Step 12



- Slide the opening pick around the top left corner of the iPad to separate the adhesive.

Step 13



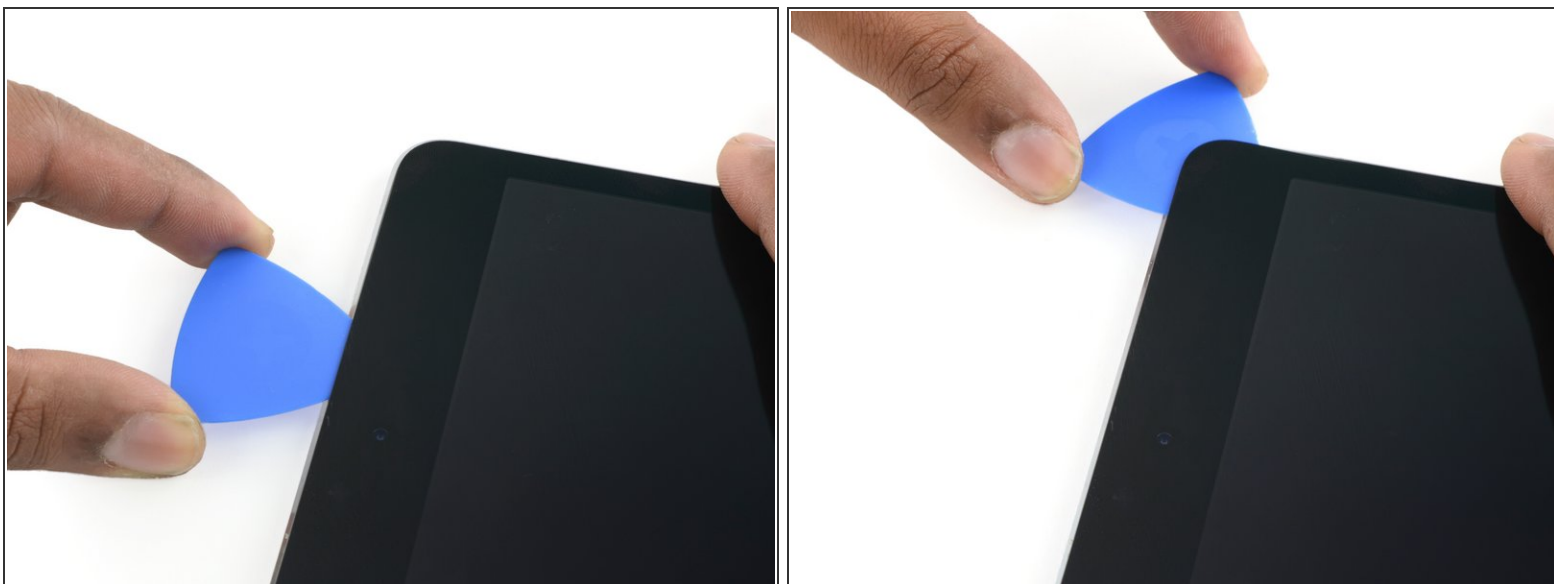
- Slide the opening pick along the top edge of the iPad, stopping just before you reach the camera.
 - As you reach the front-facing camera, pull the pick out slightly and continue sliding it across the top edge.
-  Avoid sliding the opening pick over the front-facing camera, as you may smear adhesive onto the lens or damage the camera. The following steps will detail how to best avoid disturbing the front-facing camera.

Step 14



- Leave the opening pick in the iPad slightly past the front-facing camera.
- Take a second pick and insert it to the left of the camera, where the first pick just was. Slide it back to the corner to completely cut any remaining adhesive.
- Leave the second pick in place to prevent the corner adhesive from re-sealing as it cools.

Step 15



- Insert the previous pick deeper into the iPad and slide it away from the camera toward the corner.

Step 16



- Leave the three picks in the corners of the iPad to prevent re-adhering of the front panel adhesive.
- Reheat the iOpener and place it on the remaining long side of the iPad —along the volume and lock buttons.

Step 17



- Insert a new opening pick and slide it down the right edge of the iPad, releasing the adhesive as you go.

Step 18



- Continue sliding the opening pick down the right edge of the iPad, reheating the edge using an iOpener if necessary.

⚠ Be careful not to slice too deep near the [bottom right corner](#), or you risk damaging the display cable.

Step 19



- Leave the opening picks in place and reheat the iOpener.
- ⚠ Remember not to overheat the iOpener—no more than once every ten minutes.
- Set the reheated iOpener on the home button end of the iPad and let it rest for a few minutes to soften the adhesive beneath the glass.

Step 20



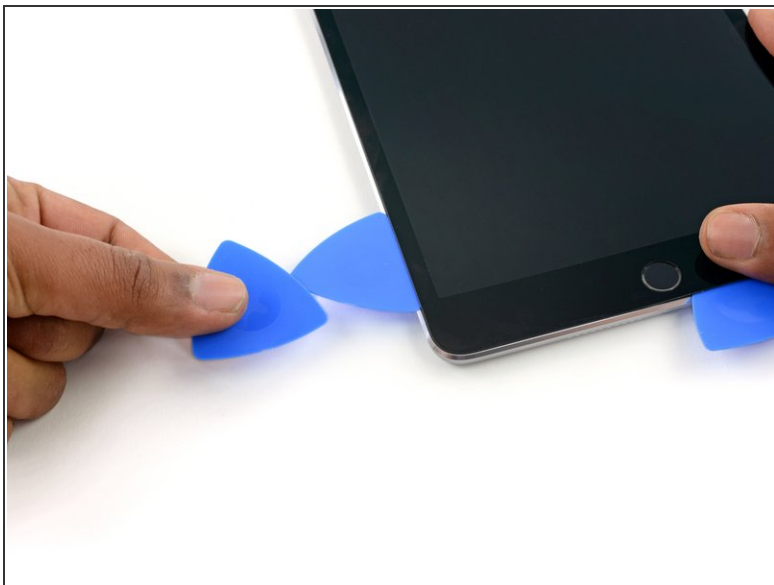
- Insert a new opening pick at the bottom right corner of the display, below the last opening pick you used to slice down the right edge.
- Rotate the new pick around the lower right corner of the device.

Step 21



- Slide the pick from the bottom right corner along the lower edge of the device. Stop about half an inch shy of the home button.

Step 22



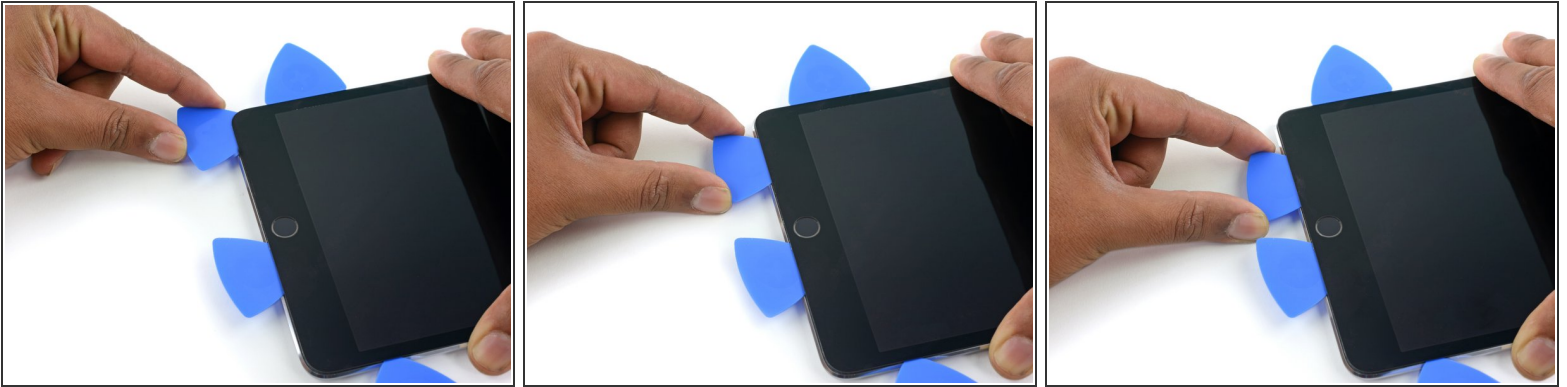
- Insert a final opening pick at the lower left corner of the iPad, directly below the existing one.

Step 23



- Slide the pick around the lower left edge of the iPad.

Step 24



- Continue sliding the pick at the lower left edge of the display toward the center of the iPad, until it is roughly half an inch from the home button.

Step 25



- Twist the two picks at the top edge of the iPad to break up the last of the adhesive holding the display assembly in place.
- Lift the display from the top edge to open the device.

Step 26 — Battery Connector



i To avoid stressing any cables, hold the display assembly perpendicular to the body of the iPad until it is disconnected.

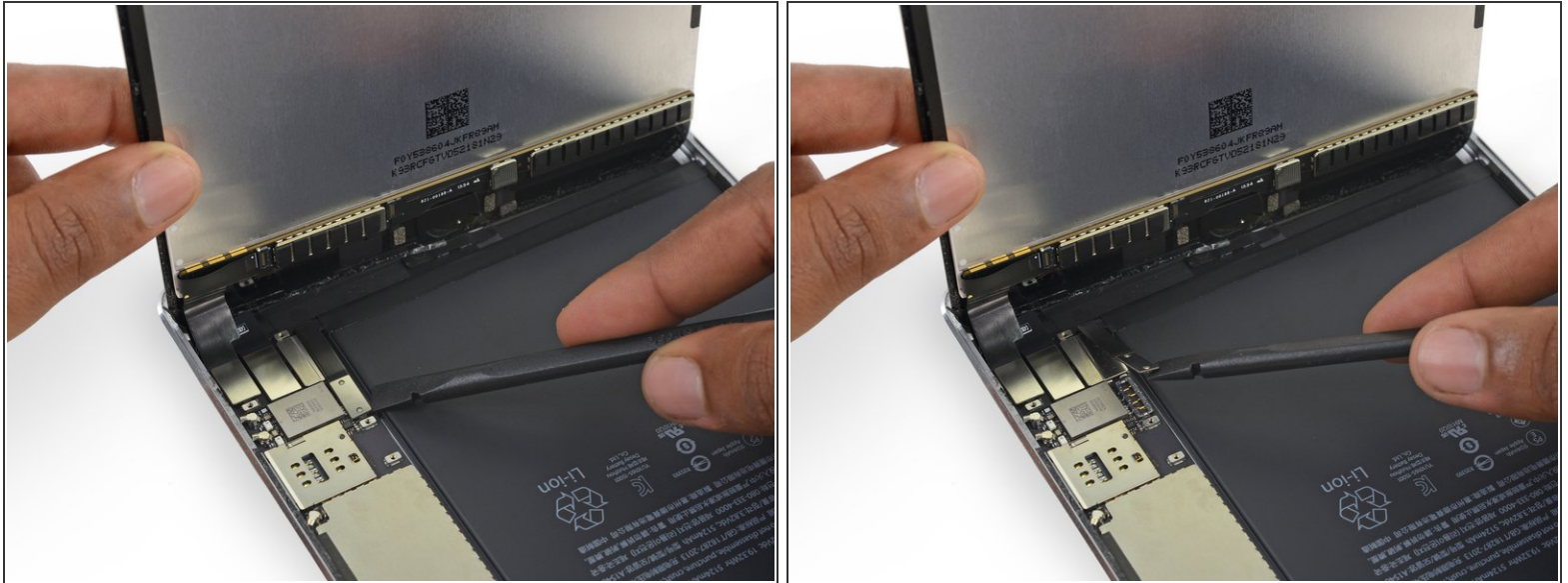
- Remove the four 1.2 mm Phillips screws over the battery/display connector bracket.

Step 27



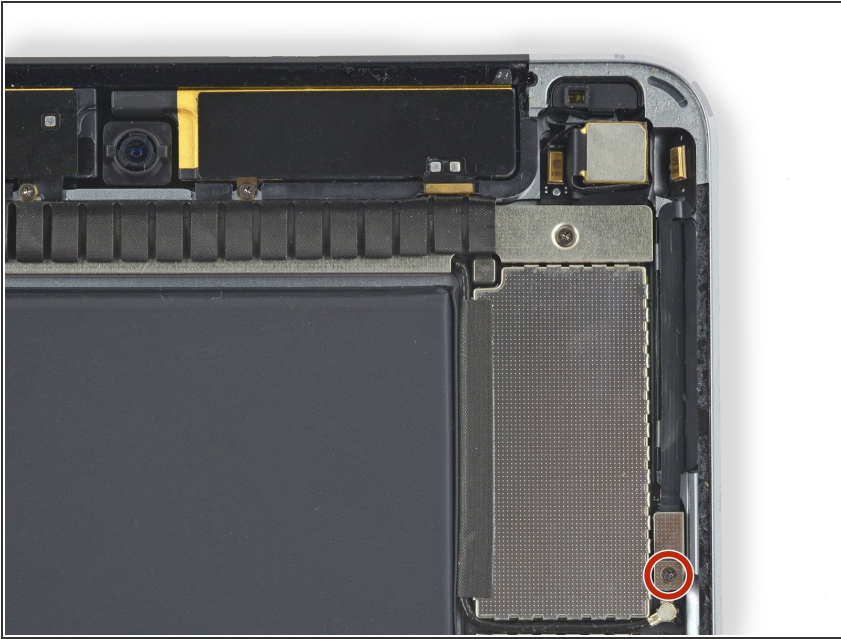
- Remove the battery/display cable bracket.

Step 28



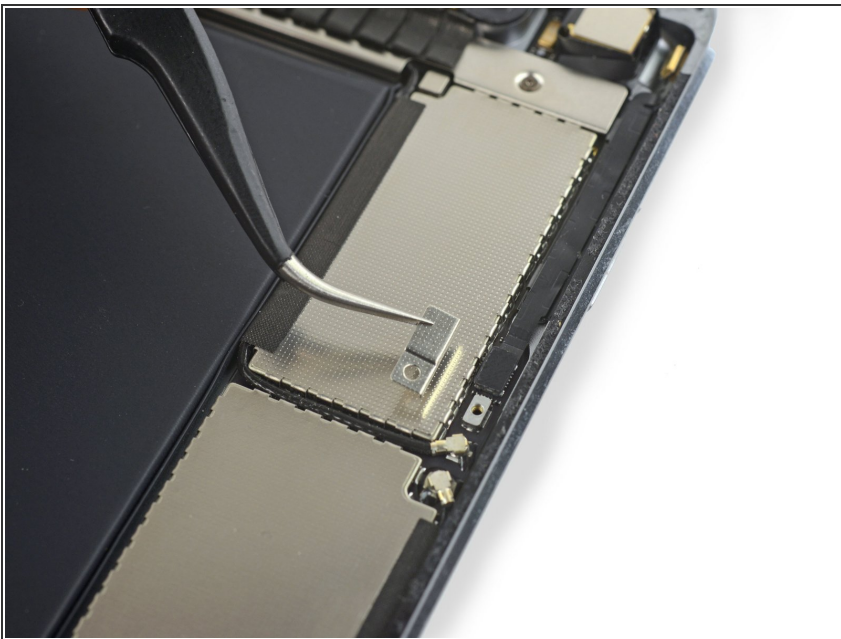
- ⚠ When disconnecting any press connectors from the logic board, be sure to lift the connector straight up to avoid ripping the socket off the board.
- Use the flat tip of a spudger to disconnect the battery connector from its socket on the logic board.
- ⓘ Bend the battery connector ribbon cable up slightly to prevent it from making contact and powering on the iPad.

Step 29 — Volume Control Buttons



- Remove the single 1.2 mm Phillips screw securing the volume control cable bracket.

Step 30



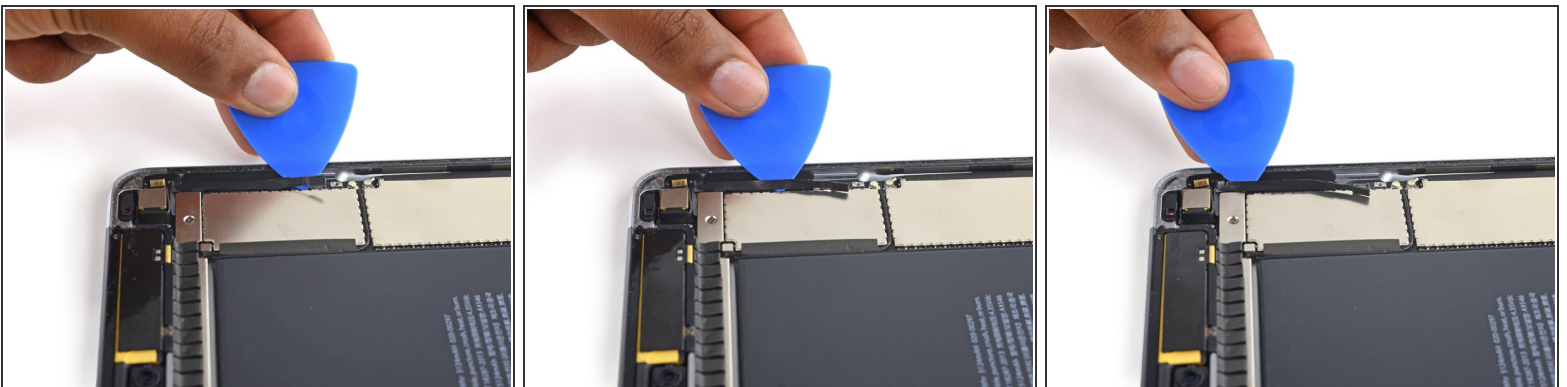
- Remove the volume control cable bracket.

Step 31



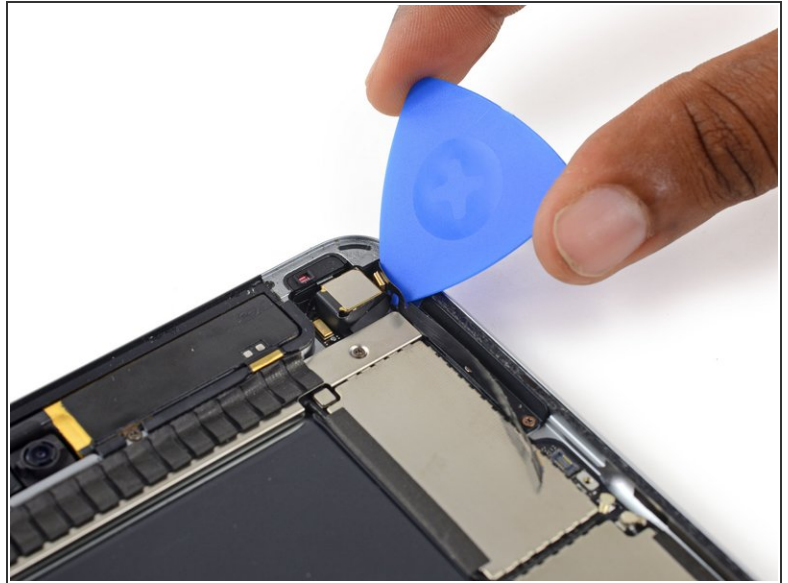
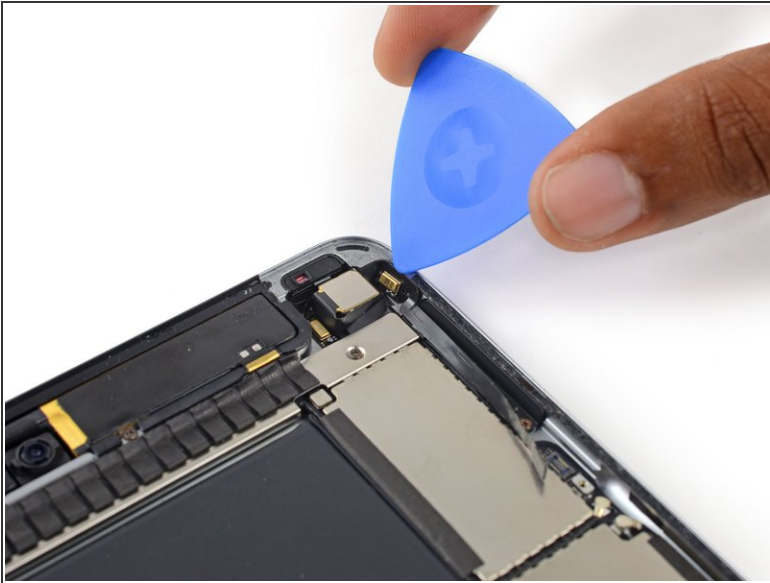
- Lift the ribbon cable connector up off its socket on the logic board.

Step 32



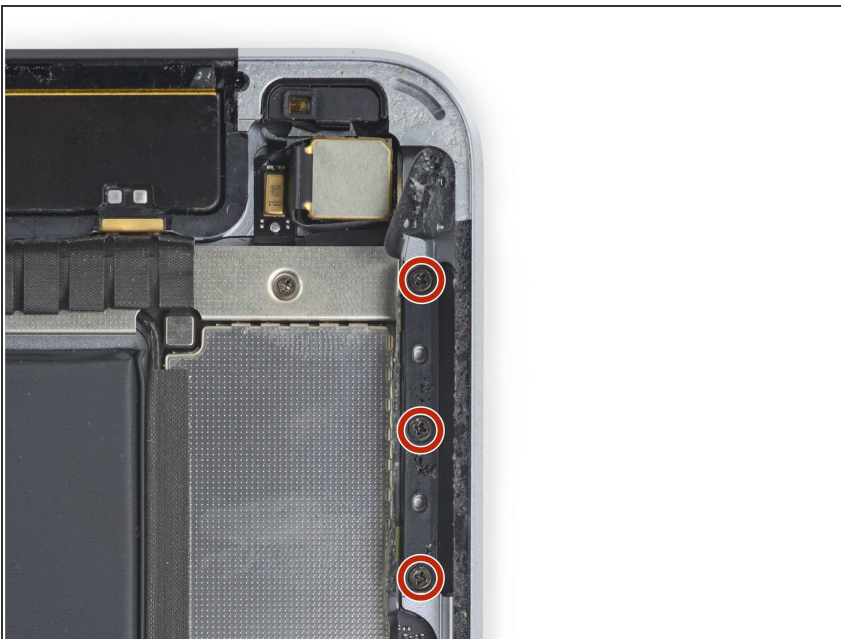
- Slide an opening pick underneath the volume control buttons' ribbon cable to peel it away from the adhesive below.

Step 33



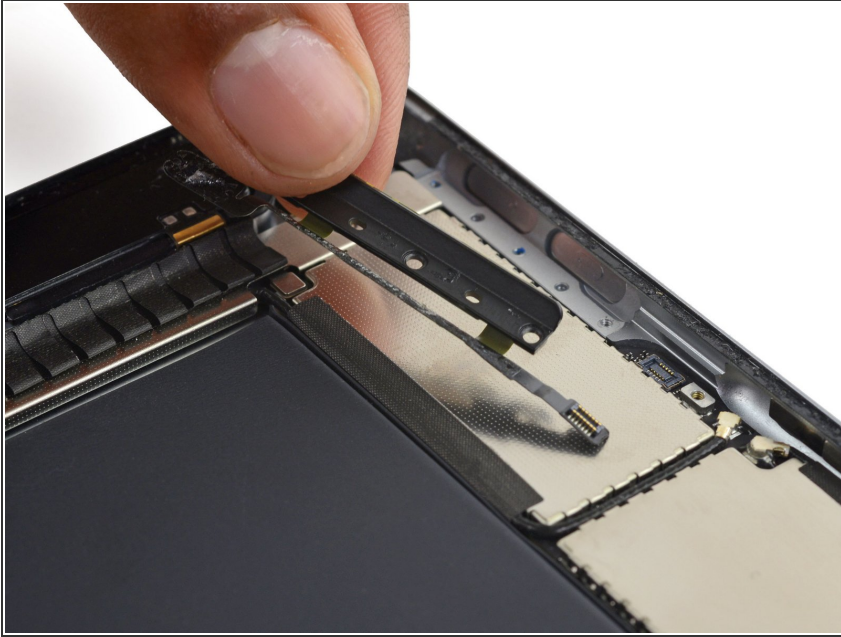
- Use a plastic opening tool to pry the microphone off the rear case.

Step 34



- Remove the three 1.8 mm Phillips screws securing the volume control assembly to the rear case.

Step 35



- Pull the bracket, with attached volume control buttons and microphone out of the iPad.
- ★ If you are replacing the volume control assembly with a new part, be sure the part you are putting in matches the one you pulled out. You may have to transfer some components.

To reassemble your device, follow these instructions in reverse order.