



# iPhone 11 Pro Screen Replacement

How to replace a cracked/broken screen in your iPhone 11 Pro. The cover glass with digitizer and AMOLED display panel are all replaced as a single part.

Written By: Jeff Suovanen



## INTRODUCTION

If your iPhone 11 Pro screen is cracked, not responding to touch, or not showing a picture when your phone is powered on, use this guide to restore your iPhone to working order with a new screen, a.k.a. display assembly.

**The combined earpiece speaker + sensor assembly affixed to the back of the display is paired to your individual iPhone from the factory**, so you must transfer it from your old display to your new one during any display replacement. It contains the flood illuminator, which is part of the biometric Face ID security feature. If it is damaged or replaced, Face ID will cease to function, so take extra care not to damage any of these components during this procedure. If damaged, only Apple or an Apple-authorized technician can restore Face ID function.

**Note:** True Tone functionality is disabled after a screen replacement, even when using an original Apple screen. Additionally, your iPhone may [temporarily show a warning](#) about the “genuineness” of the display.



### TOOLS:

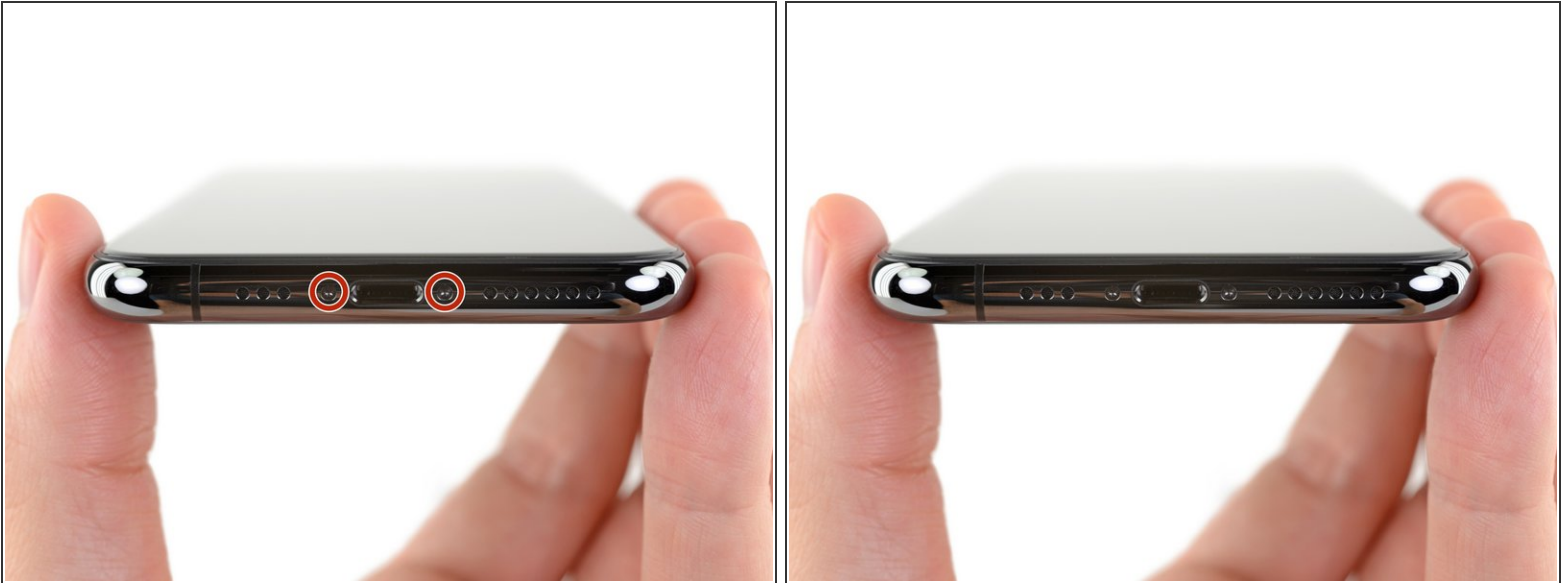
- [P2 Pentalobe Screwdriver iPhone](#) (1)
- [iOpener](#) (1)
- [iFixit Opening Picks set of 6](#) (1)
- [Suction Handle](#) (1)
- [iSlack](#) (1)
- Optional*
- [Tri-point Y000 Screwdriver Bit](#) (1)
- [Tweezers](#) (1)
- [Spudger](#) (1)





### PARTS:

- [iPhone 11 Pro Screen](#) (1)
- [iPhone 11 Pro Display Assembly Adhesive](#) (1)
- [NuGlas Tempered Glass Screen Protector for iPhone X/XS/11 Pro](#) (1)

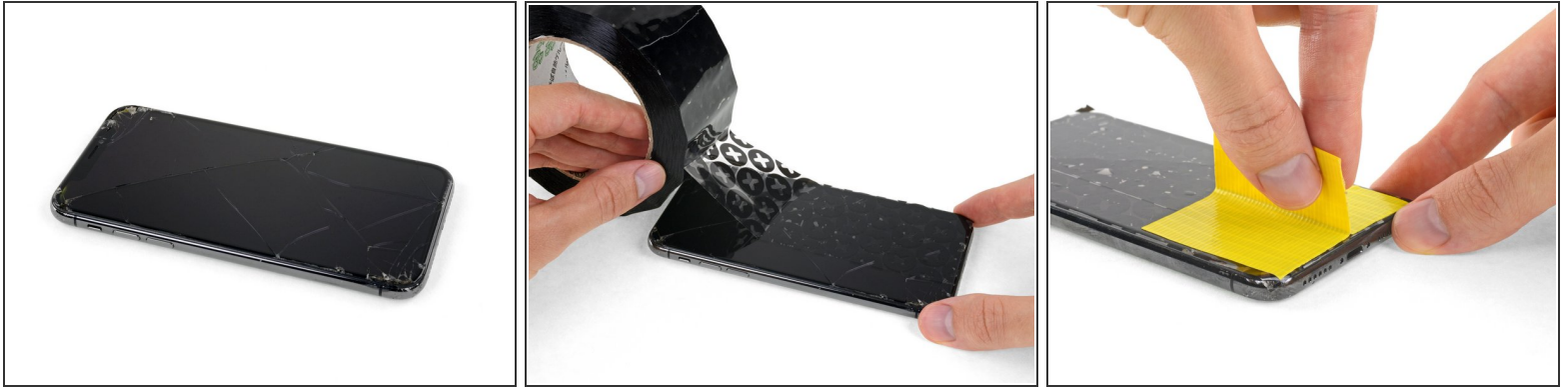
## Step 1 — Remove the pentalobe screws



 Before you begin, discharge your iPhone battery below 25%. A charged lithium-ion battery can catch fire and/or explode if accidentally punctured.

- Power off your iPhone before beginning disassembly.
- Remove the two 6.7 mm-long pentalobe screws at the bottom edge of the iPhone.
-  Opening the iPhone's display will compromise its waterproof seals. Have replacement seals ready before you proceed past this step, or take care to avoid liquid exposure if you reassemble your iPhone without replacing the seals.

## Step 2 — Tape over any cracks



- If your iPhone has a cracked screen, keep further breakage contained and prevent bodily harm during your repair by taping over the glass.
- Lay overlapping strips of packing tape over the iPhone's display until the whole face is covered.
  - ⓘ This will keep glass shards contained and provide structural integrity when prying and lifting the display.
- ⚠ Wear safety glasses to protect your eyes from any glass shaken free during the repair.
- If the broken glass makes it difficult to get a suction cup to stick in the next few steps, try folding a strong piece of tape (such as duct tape) into a handle and lifting the display with that instead.

## Step 3 — Heat the lower edge of the phone



- ① Heating the lower edge of the iPhone helps soften the adhesive securing the display, making it easier to open.
- Use a hairdryer or heat gun or [prepare an iOpener](#) and apply it to the lower edge of the iPhone for about a minute in order to soften up the adhesive underneath.

## Step 4 — Apply suction cup(s)



- i** The next two steps demonstrate the iSlack, a handy tool that we recommend for anyone doing frequent repairs. **If you aren't using the iSlack, skip down two steps for an alternate method.**
- If the plastic depth gauge is attached at the center of the iSlack, remove it now—it's not needed for larger iPhones like the iPhone 11 Pro.
  - Position the suction cups near the bottom edge of the iPhone—one on the front, and one on the back.
  - Press both suction cups firmly into place.
- i** If your display or back glass is badly cracked, [covering it with a layer of clear packing tape](#) may help the suction cups adhere. The iSlack also includes two pieces of tape for this purpose.



## Step 5



- Hold onto your iPhone securely and close the handle of the iSclack to slightly separate the screen from the rear case of the phone.
  - ⚠ Don't try to completely separate the screen; a small opening along the bottom edge is all you need.
- Insert an opening pick into the gap under the display on the lower edge of the iPhone.
- **Skip the next two steps.**

## Step 6



- If you're using a single suction handle, apply it to the bottom edge of the phone, while avoiding the curved portion of the glass.
- ⓘ If your display is badly cracked, [covering it with a layer of clear packing tape](#) may allow the suction cup to adhere. Alternatively, [very strong tape](#) may be used *instead of* the suction cup. If all else fails, you can superglue the suction cup to the broken screen.



## Step 7 — Lift the display slightly



- Pull up on the suction cup with firm, constant pressure to create a slight gap between the front panel and rear case.
  - Insert an opening pick into the gap.
- i** The watertight adhesive holding the display in place is very strong; creating this initial gap takes a significant amount of force. If you're having a hard time opening a gap, apply more heat, and gently rock the screen up and down to weaken the adhesive until you create enough of a gap to insert your tool.

## Step 8 — Separate the screen adhesive




- Slide the opening pick around the lower left corner and up the left edge of the iPhone, slicing through the adhesive holding the display in place.
- ⚠** Don't insert the opening pick too far into the iPhone, or you may cause damage to internal components.

## Step 9




- Re-insert your pick at the bottom edge of the iPhone, and slide it up the right side to continue separating the adhesive.

 Don't insert the pick very far, or you may damage the display cables along this side of the iPhone. Insert it only a few millimeters, or about the width of the display bezel.

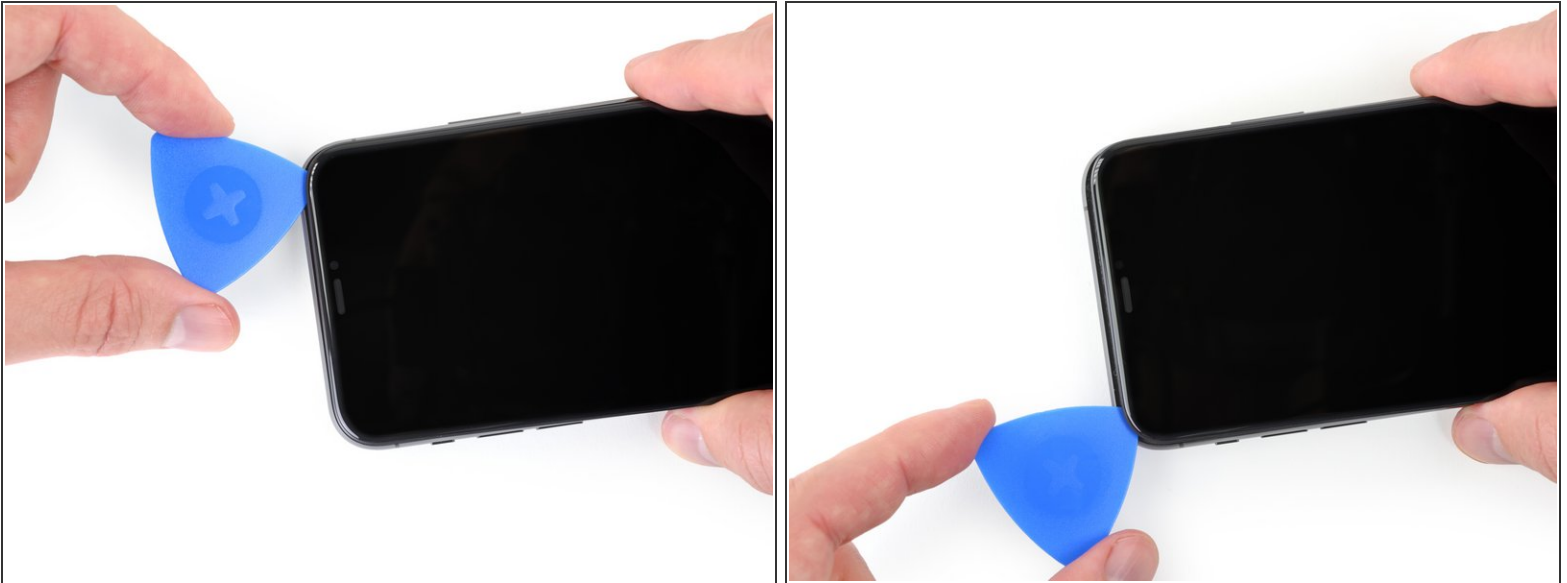
## Step 10



 The top edge of the display is secured with both glue and clips.

- Gently pull the right edge of the display **down** slightly (in the direction of the Lightning port).
- Insert your pick into the top-right corner of the phone.

## Step 11



- Continue pulling the display down (toward the Lightning port) as needed in order to make a gap large enough for the pick.
  - Slide the pick to the top left corner and cut any remaining adhesive securing the display.
- ⚠ Again, don't insert the pick more than a few millimeters—about the width of the display bezel—or you may damage the front panel sensor array.

## Step 12 — Remove the suction cup(s)




- Pull on the small nub on the suction cup to remove it from the front panel.
- If you used an iSclack and it's still affixed to the iPhone, remove it now.


## Step 13 — Open the iPhone



- Open the iPhone by swinging the display up from the left side, like the back cover of a book.

 Don't try to fully separate the display yet, as several fragile ribbon cables still connect it to the iPhone's logic board.

- Lean the display against something to keep it propped up while you're working on the phone.

 During reassembly, lay the display in position, align the clips along the top edge, and carefully press the top edge into place before snapping the rest of the display down. If it doesn't click easily into place, check the condition of the clips around the perimeter of the display and make sure they aren't bent.

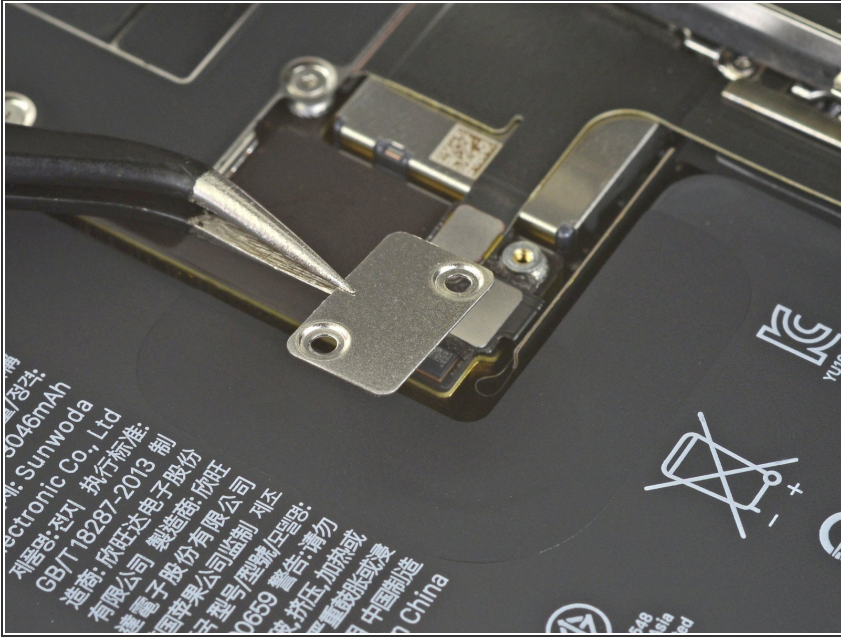
## Step 14 — Unscrew the battery connector cover



- Remove two 1.3 mm long Y000 screws securing the battery cover bracket.
- ⓘ Throughout this repair, [keep track of each screw](#) and make sure it goes back exactly where it came from to avoid damaging your iPhone.
- 🔧 During reassembly, this is a good point to power on your iPhone and test all functions before you seal the display in place. Be sure to power your iPhone back down completely before you continue working.

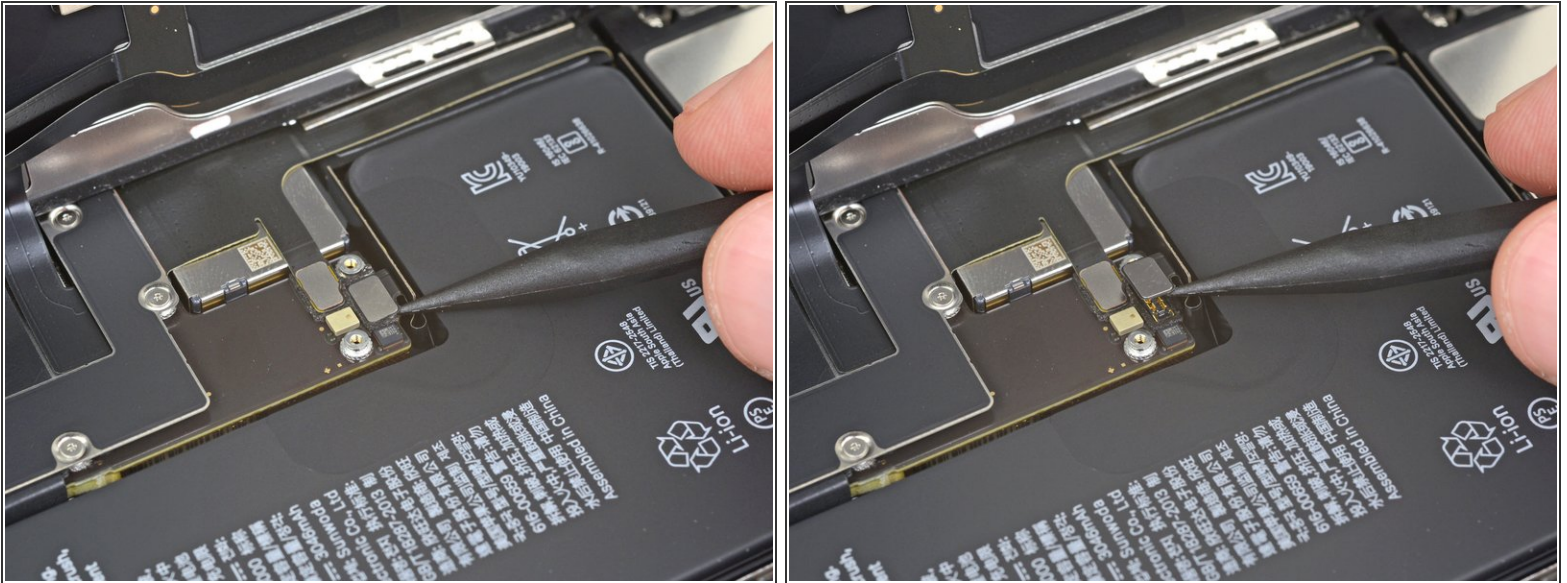


## Step 15 — Remove the battery connector cover



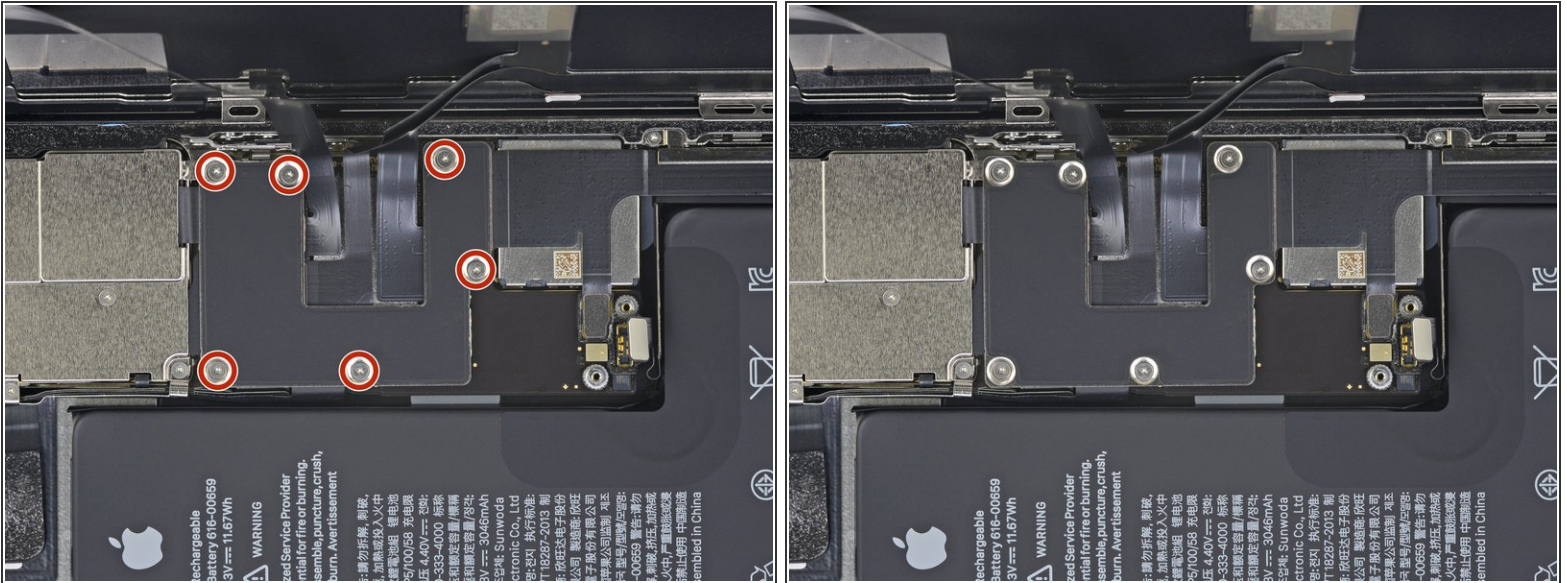
- Remove the bracket.

## Step 16 — Disconnect the battery



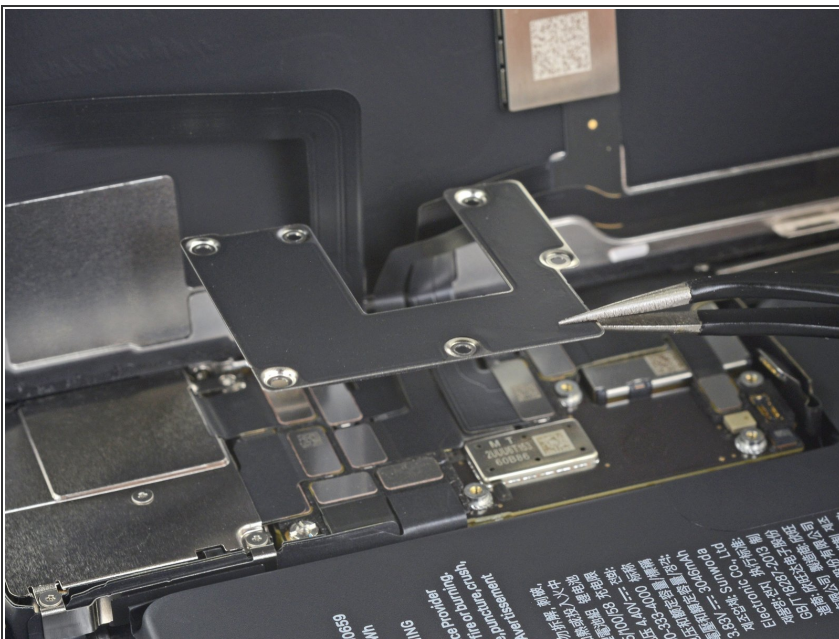
- Use a spudger or a clean fingernail to pry the battery connector up from its socket on the logic board.
- ⓘ Try not to damage the black silicone seal surrounding this and other board connections. These seals provide extra protection against water and dust intrusion.
- Bend the connector slightly away from the logic board to prevent it from accidentally making contact with the socket and providing power to the phone during your repair.

## Step 17 — Unscrew the logic board cover screws



- Use a Y000 driver to remove six 1.3 mm screws securing the logic board cover bracket.

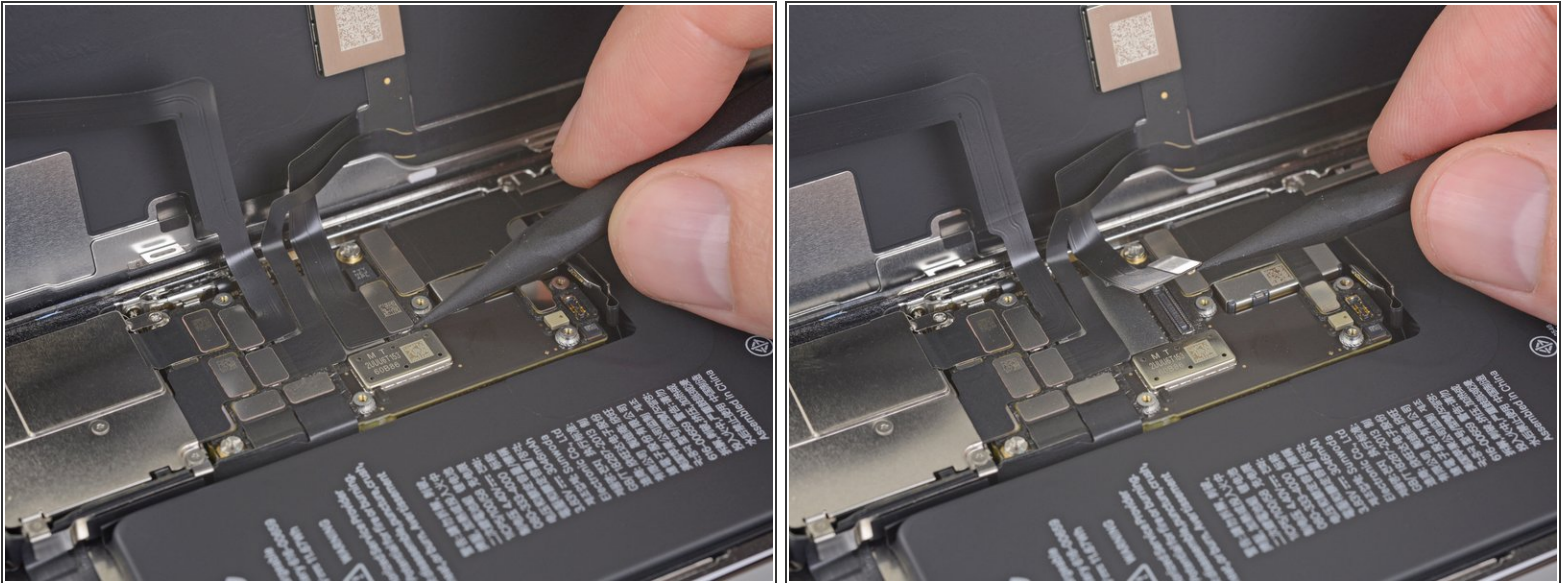
## Step 18 — Remove the logic board cover bracket



- Remove the bracket.

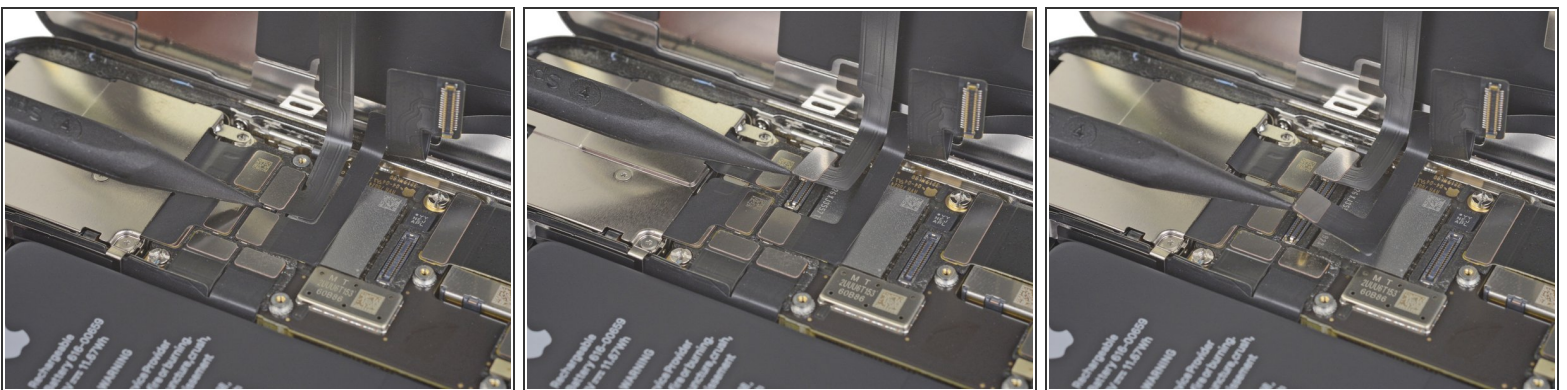


## Step 19 — Disconnect the OLED display cable



- Use a spudger or a fingernail to disconnect the OLED panel cable connector.
- ☑ To re-attach [press connectors](#) like this one, carefully align and press down on one side until it clicks into place, then repeat on the other side. Do not press down on the middle. If the connector is misaligned, the pins can bend, causing permanent damage.

## Step 20 — Disconnect the front sensors + digitizer



- Use a spudger or a fingernail to disconnect the front sensor assembly cable connector.
- Use a spudger or a fingernail to disconnect the digitizer cable connector.
- ☑ If any part of your screen doesn't respond to touch after your repair, disconnect the battery and then re-seat this connector, making sure it clicks fully into place and that there's no dust or other obstruction in the socket.

## Step 21 — Remove the display assembly



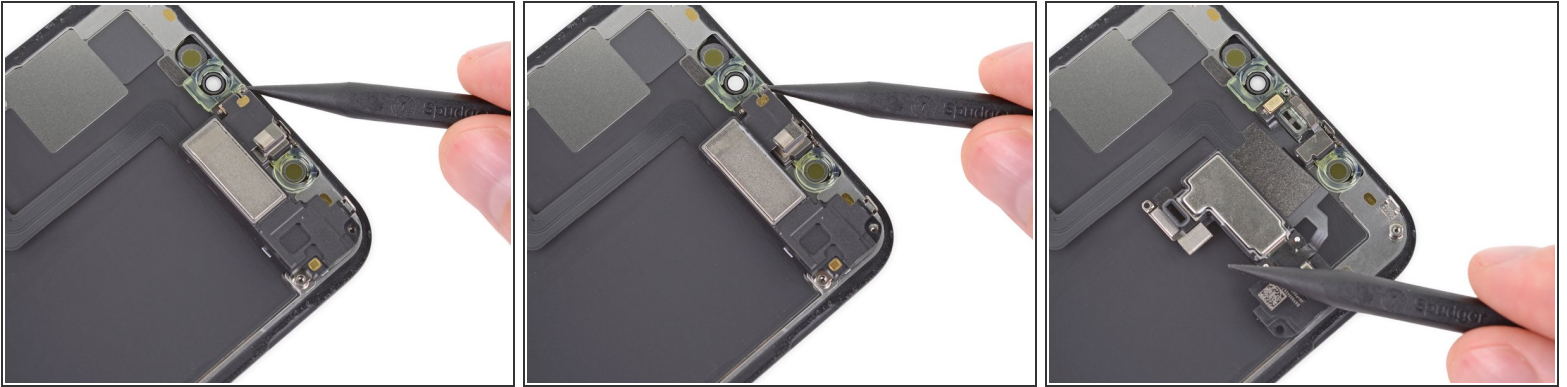
- Remove the display assembly.
- ☑ During reassembly, pause here if you wish to [replace the waterproof adhesive around the edges of the display](#).


## Step 22 — Unscrew the front assembly




- Use a Y000 driver to remove the three screws securing the speaker/sensor assembly to the back of the display:
  - Two 1.3 mm screws
  - One 1.9 mm screw

## Step 23 — Flip the speaker assembly over



 The earpiece speaker is lightly adhered in place.

- Use the point of a spudger to gently pry up the top edge of the speaker.
- Flip the speaker assembly over—down and away from the top edge of the display.

 The speaker remains attached via a very thin ribbon cable. Be careful not to strain or damage the cable.

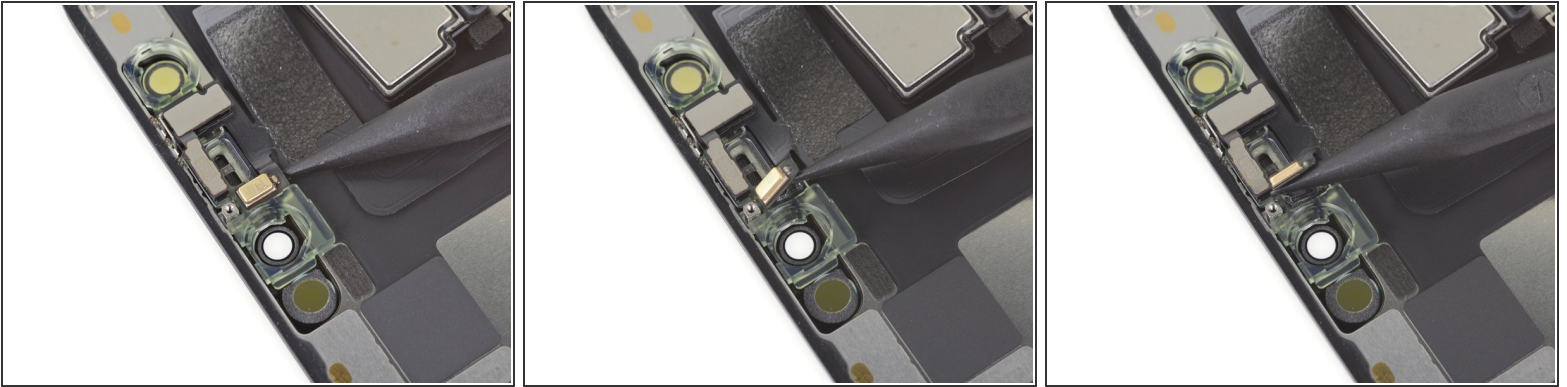
## Step 24 — Heat up the top edge of the display



- Use a hairdryer or heat gun or [prepare an iOpener](#) and apply it to the top front of the display for 1-2 minutes, in order to soften the adhesive securing the sensors.

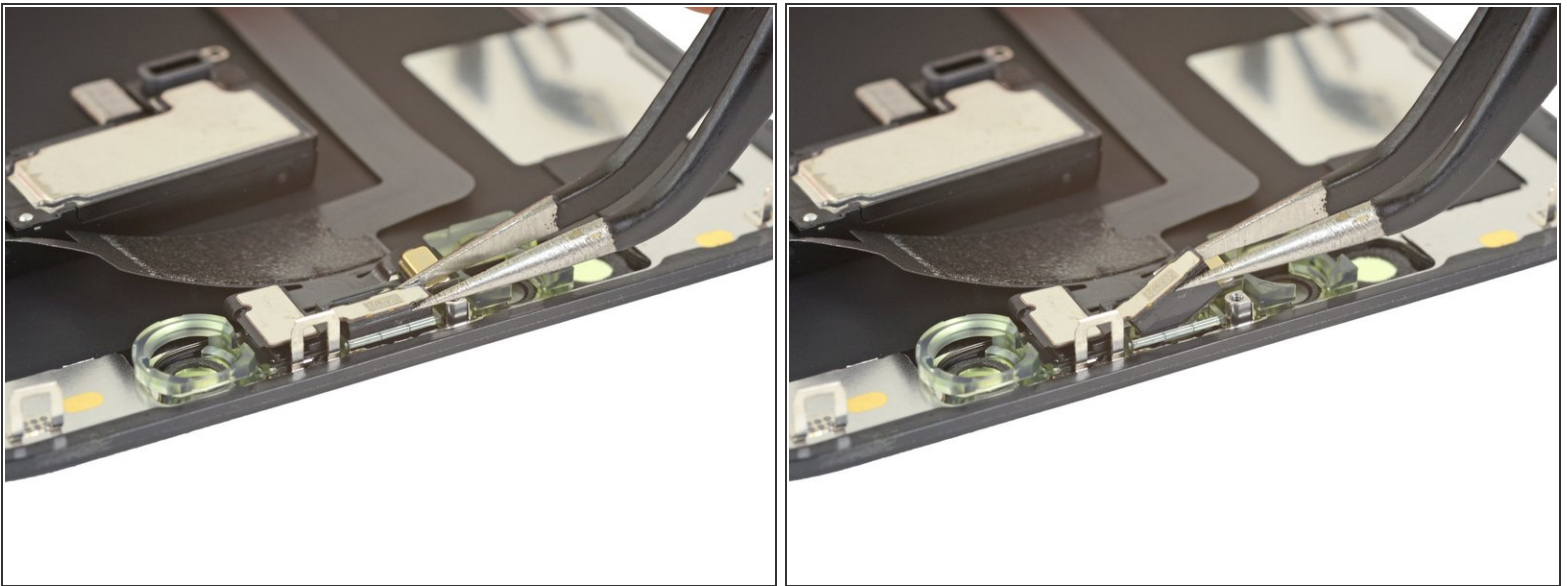


## Step 25 — Pry up the microphone



- Use the point of a spudger to lift and separate the microphone from its notch in the front panel.

## Step 26 — Separate the ambient light sensor



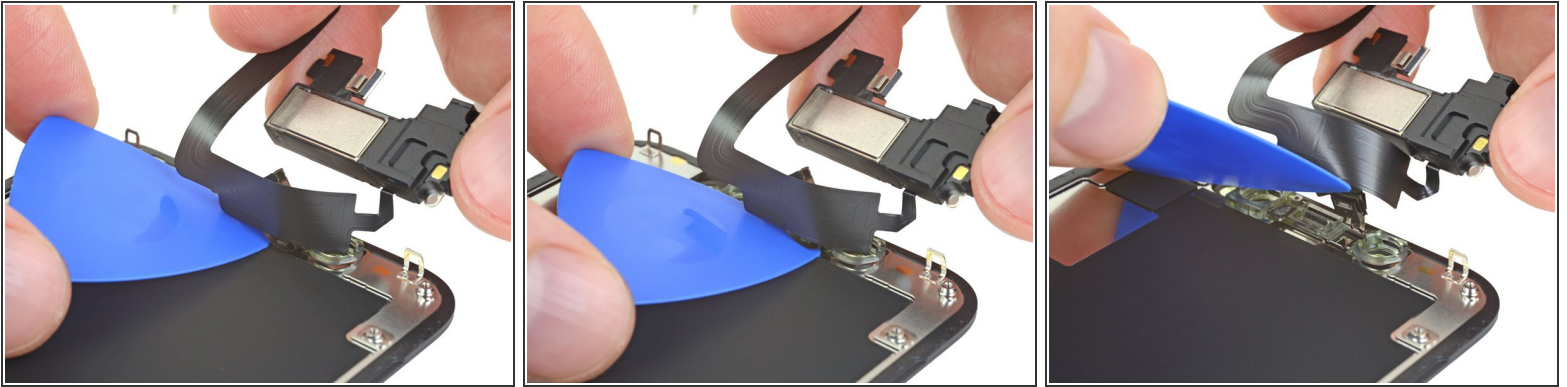
- Use tweezers to wiggle the ambient light sensor and lift it from its notch in the display.
  - ⓘ If the sensor does not wiggle free after a few seconds, apply more heat and try again.
- ⚠ The sensor remains attached to the rest of the sensor assembly via a very thin flex cable. Be careful not to strain or damage the cable.

## Step 27



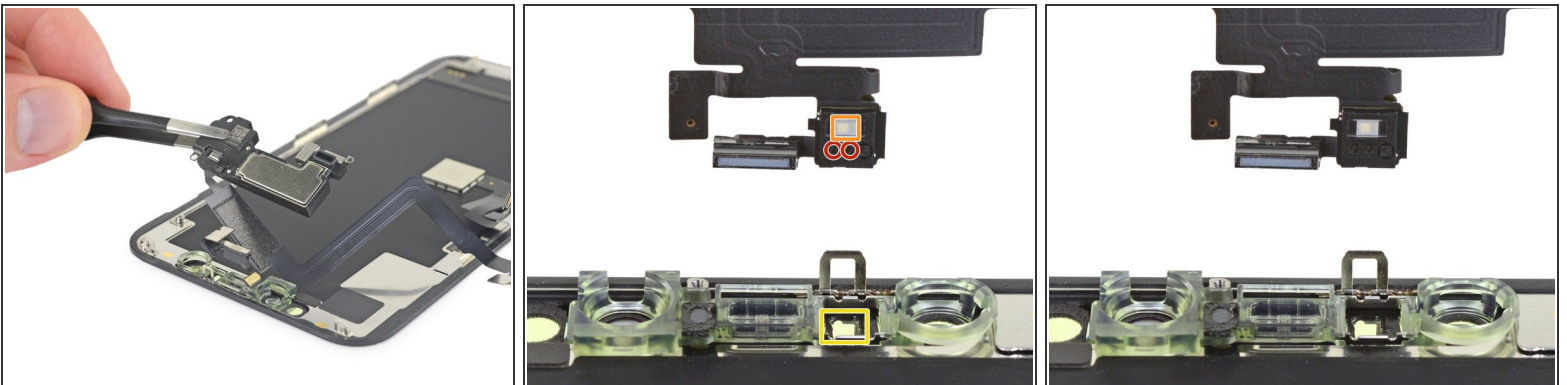
- If you successfully removed the entire ambient light sensor, as shown in the first photo, continue to the next step below.
- If the white diffuser strip detached and remains embedded in the display, as shown in the second photo, you will need to carefully lever it out along the top edge using a thin blade or pry tool. Re-applying heat first may make this task a bit easier.
  - ★ During reassembly, install the diffuser into the display first, making sure it faces the right direction (the front-facing side is shown in the first image, and the rear-facing side is shown in the third).
  - ★ Then, set the ambient light sensor on top of the diffuser. You will need to hold the sensor in position while installing the screws securing the earpiece/sensor assembly. Once the screws are tightened, the sensor will stay in place and work normally.

## Step 28



- Working left to right, slide an opening pick beneath the flex cable and underneath the proximity sensor + flood illuminator module.
  - Gently wiggle and lift to separate the module from its notch in the front panel.
- i** It's helpful to lift and hold the speaker out of the way for access. Just be careful not to pull on the thin flex cable while you work.

## Step 29 — Remove the speaker + front sensor assembly



- Remove the earpiece speaker and front sensor assembly.
- ⚠** During reassembly, check the position of the black plastic module containing these components:
- Proximity sensor
  - Flood illuminator
- The module must be positioned so that these components are not obstructed by any adhesive.

Compare your new replacement part to the original part—you may need to transfer remaining components or remove adhesive backings from the new part before installing.

**To reassemble your device, follow the above steps in reverse order.**

Take your e-waste to an [R2 or e-Stewards certified recycler](#).

Repair didn't go as planned? Check out our [iPhone 11 Pro Answers community](#) for troubleshooting help.