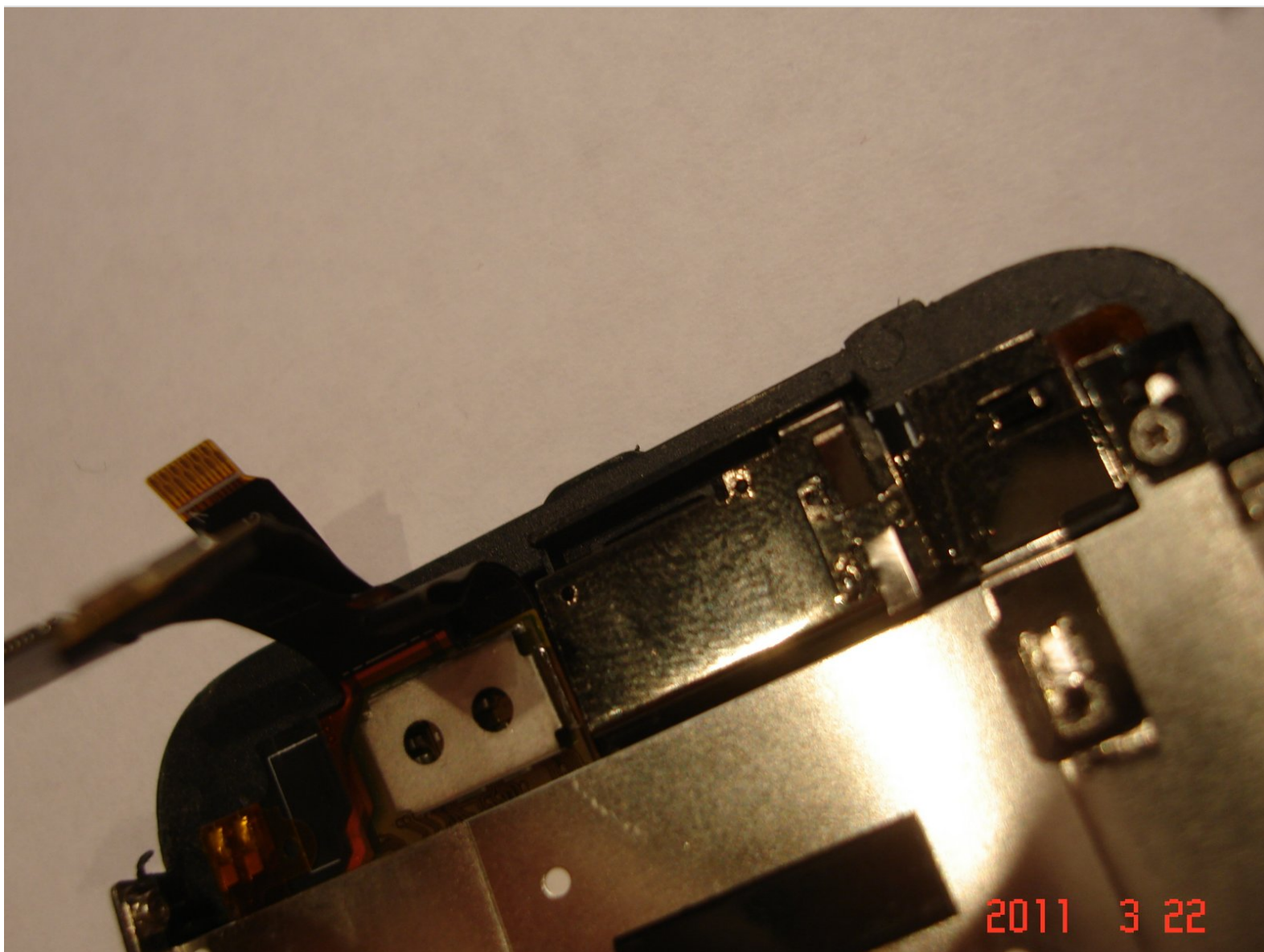




# iPhone 3GS Proximity Sensor Ribbon Replacement

Many people have come across the loss of their ear speaker or proximity sensor once they change out their digitizer or even remove the screen once or twice. This guide will allow you to replace it via DIY.

Written By: [hectordtruong](#)



## INTRODUCTION

To find out how to remove the screen assembly for an iPhone 3GS please go to [Installing iPhone 3GS Display Assembly](#).

Removal of the original ribbon is a bit tricky. I use an automotive type of pick tool to remove the existing ribbon bracket. Read on for details on this repair.

NOTE: Many vendors online sell defective units, and these ribbons damage easily. When buying, buy a few because you may go through 3-4 before you get a good one.

For more info about me and my repairs, check out my blog. I do a lot of microsoldering repairs and what not.

[My blog of DIY and repair things for the iphone!](#)

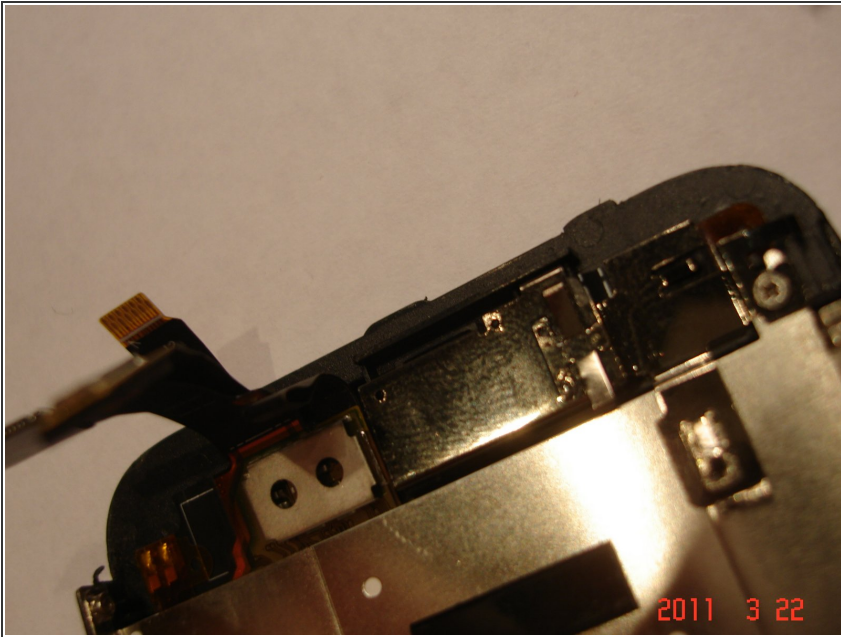
ALSO PLEASE CLICK "I DID IT" when you finish this repair! It'll help me help you more! Thanks!



### TOOLS:

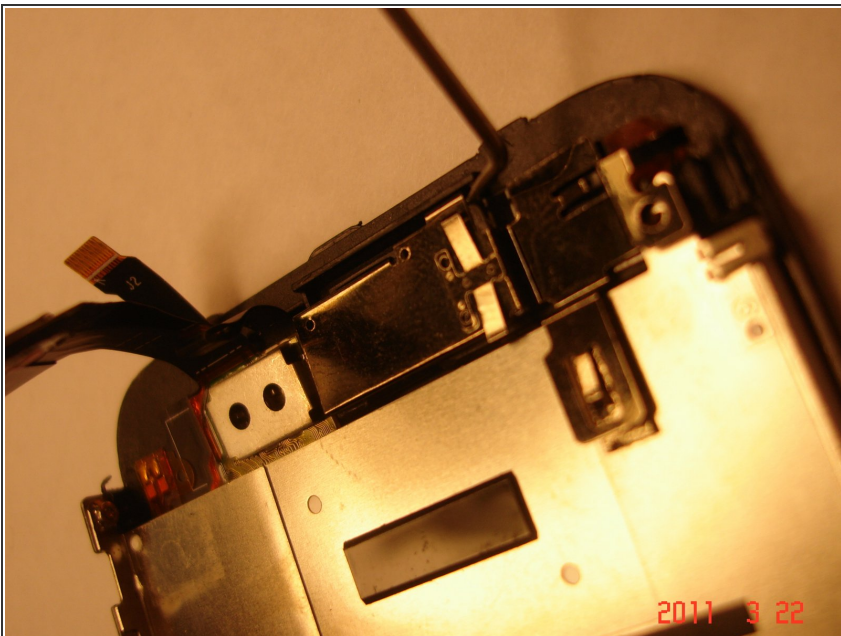
- [Phillips #0 Screwdriver](#) (1)
  - [iFixit Opening Tools](#) (1)
  - [Spudger](#) (1)
-

## Step 1 — Proximity Sensor Ribbon



- Remove the screw that holds this bracket in and put it in a safe place.

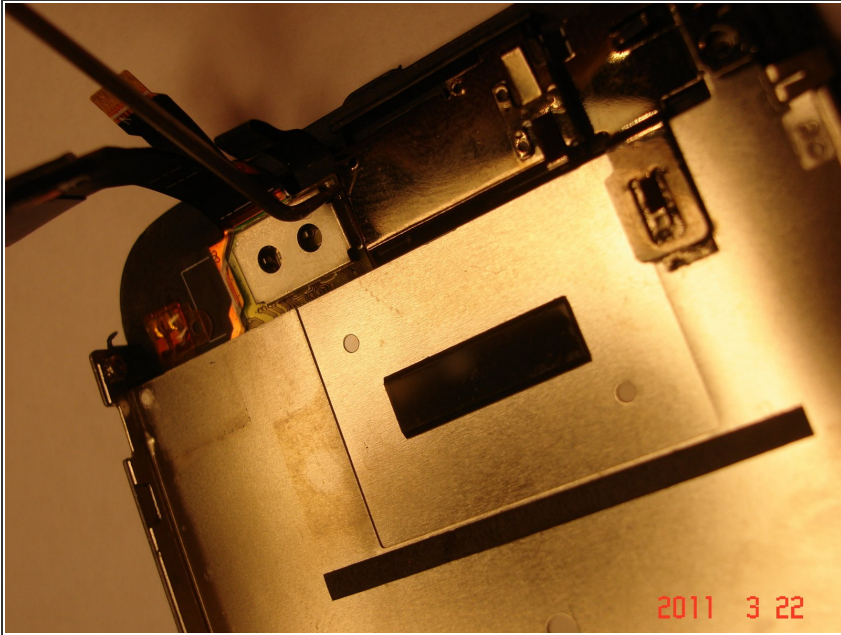
## Step 2



- Use an automotive pick tool to lift the bracket up on the side of where the speaker lies. Slight upward pressure, do not force or pry.

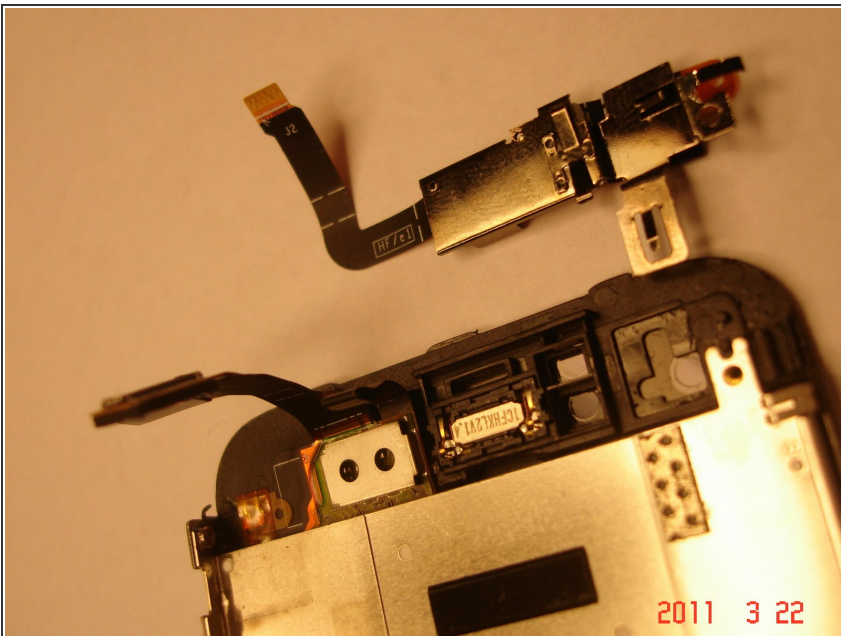


### Step 3



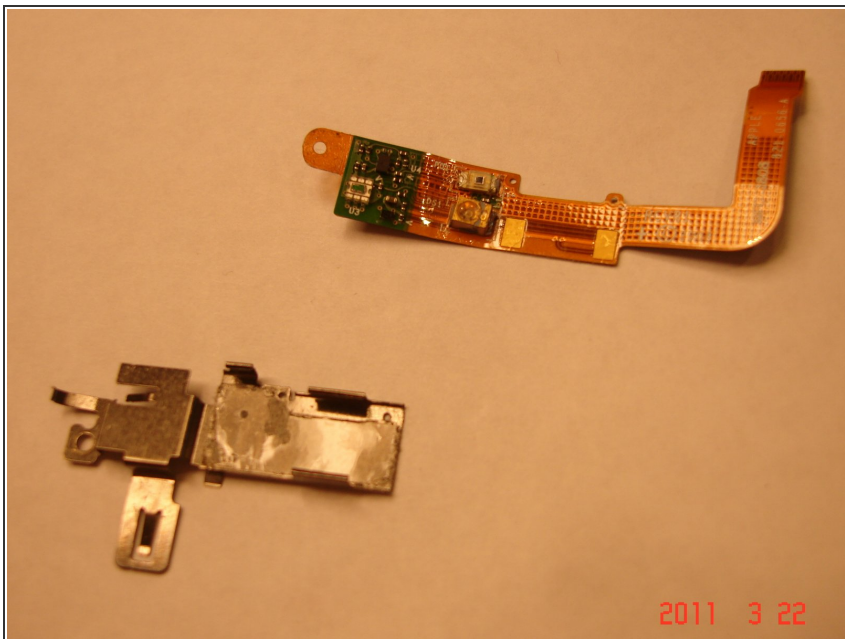
- Do the same with the other side and on the bottom of the bracket. This is held in with tension on fingers that clip into the screen midframe.

### Step 4



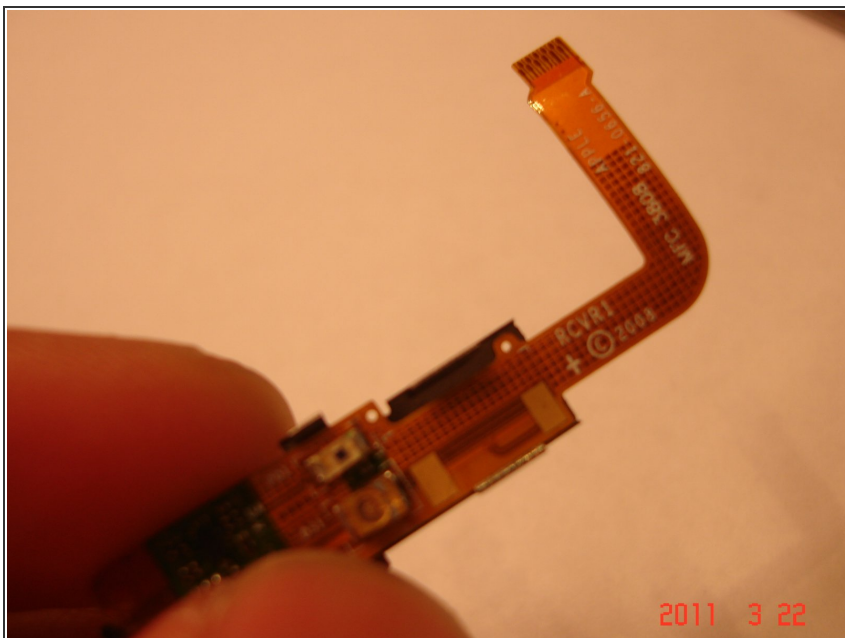
- Once the bracket is loose, you can pull it up carefully maneuvering it up and around the LCD and digitizer connectors.

## Step 5



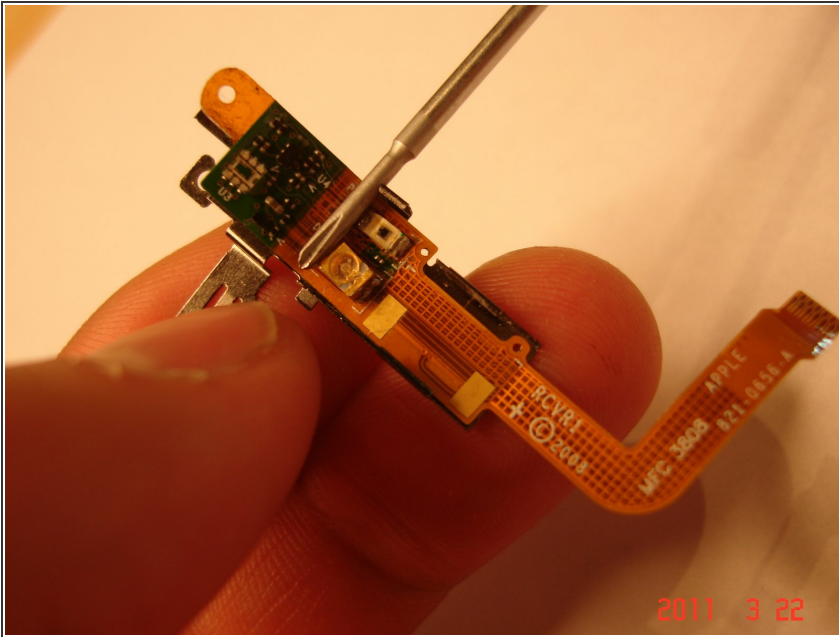
- Peel the old ribbon from the bracket, note the orientation.

## Step 6



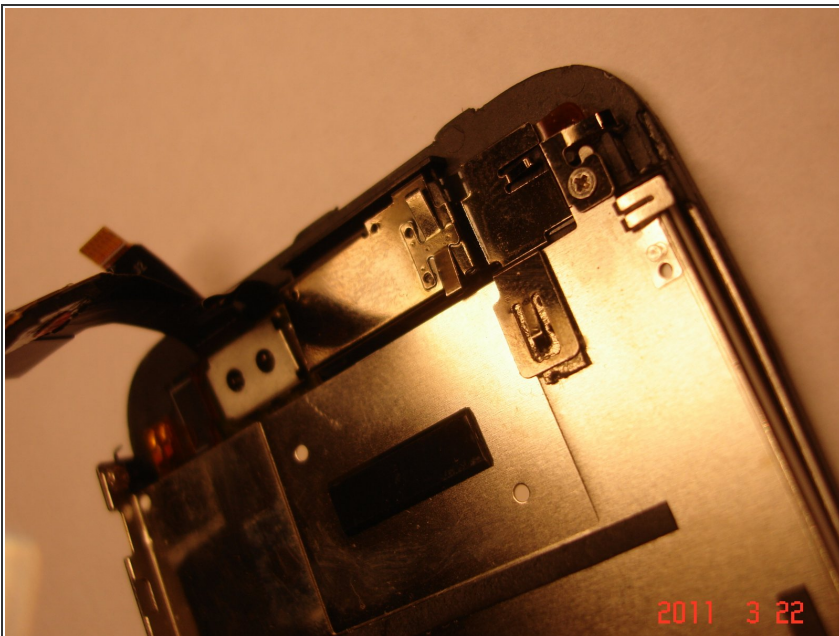
- Peel off the adhesive backing protectors from the new ribbon, and line up the holes in the ribbon with the ones on the bracket as so.

## Step 7



- Use a small screwdriver's shaft to conform the new ribbon to the bracket's contour. Light pressure is only needed.
- At the top of the ribbon, note that there are two small holes. Align them with the two holes in the metal piece for a perfect fit.

## Step 8



- Lift the digitizer and LCD connectors and snap in the bracket/ribbon combo to finish it off.

To reassemble your device, follow these instructions in reverse order.