



iPhone 4 Verizon Dock Connector Replacement

Replace a broken dock connector in your iPhone 4 Verizon.

Written By: Andrew Bookholt



INTRODUCTION

Use this guide to replace the dock connector assembly, which includes the dock connector and lower microphone.



TOOLS:

- [P2 Pentalobe Screwdriver iPhone](#) (1)
- [Phillips #000 Screwdriver](#) (1)
- [iFixit Opening Tools](#) (1)
- [Tweezers](#) (1)




PARTS:

- [iPhone 4 Dock Connector \(CDMA/Verizon\)](#) (1)

Step 1 — Rear Panel



-  Before you begin, discharge your iPhone battery below 25%. A charged lithium-ion battery can catch fire and/or explode if accidentally punctured.
- Power off your iPhone before beginning disassembly.
 - Your phone's rear cover may have two #000 Phillips screws **or** Apple's 5-Point "Pentalobe" screws. Check which screws you have, and ensure you also have the correct screwdriver in order to remove them.
 - Remove the two 3.6 mm Pentalobe or Phillips #000 screws next to the dock connector.

Step 2



- Push the rear panel toward the top edge of the iPhone.

i The panel will move about 2 mm.

Step 3



- Pinch the rear panel with your fingers, and lift it away from the iPhone. Alternatively, use a [Small Suction Cup](#).

! Be careful not to damage the plastic clips attached to the rear panel.

Step 4 — Battery



- Remove the single 1.5 mm Phillips screw securing the battery connector to the logic board (if present).

Step 5



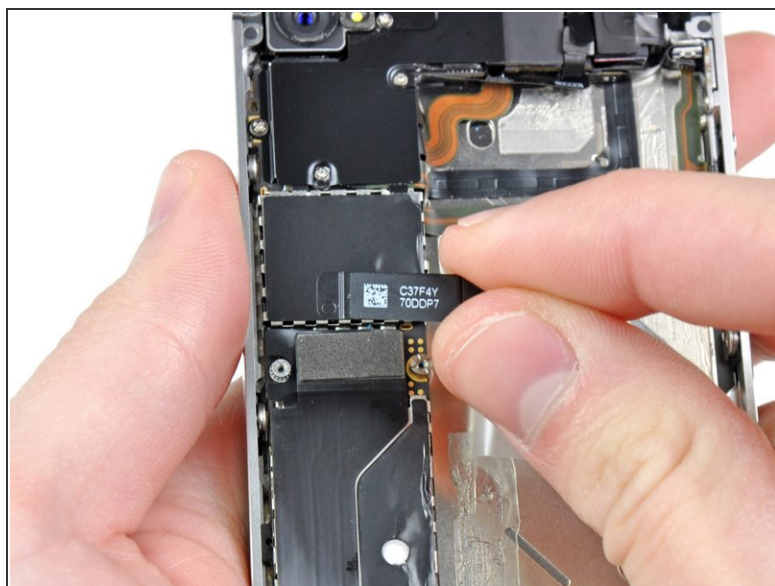
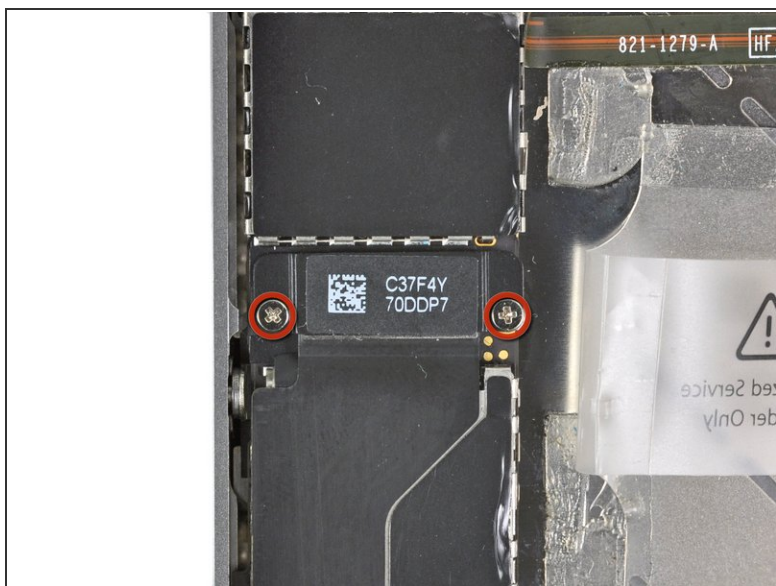
- Use the edge of a plastic opening tool to gently pry the battery connector up from its socket on the logic board.
- ⚠ Be very careful to only pry up on the battery connector and not the socket on the logic board. If you pry up on the logic board socket, you may break it entirely.
- Remove the metal clip covering the antenna connector.

Step 6



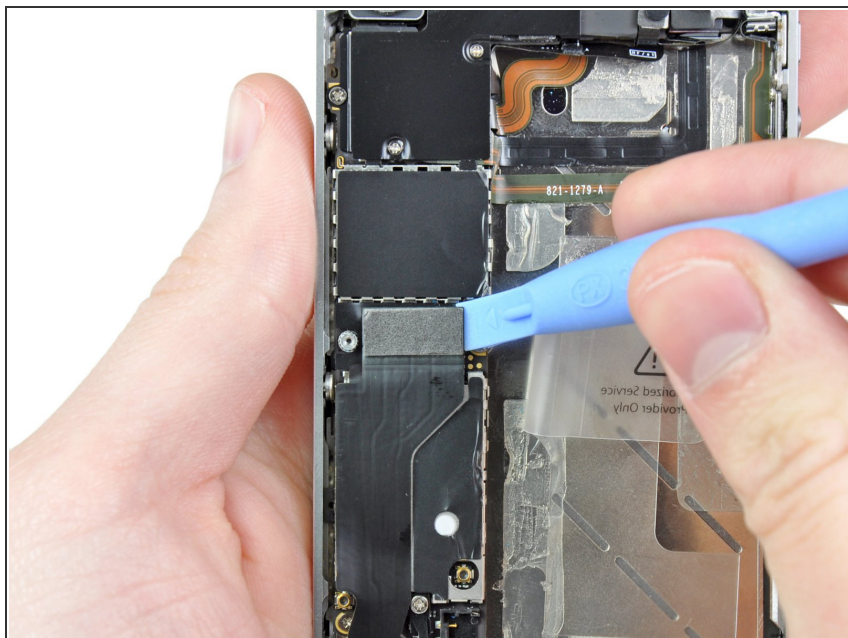
- Pull up on the exposed clear plastic tab to peel the battery off the adhesive securing it to the iPhone.
- ⚠ If the tab breaks before the battery is freed, carefully slide a spudger under the battery tab to release the adhesive. Prying in other places may cause damage.
- Remove the battery.
- ⓘ If your replacement battery came in a plastic sleeve, remove it before installation by pulling it away from the the ribbon cable.
- Before reassembly, clean metal-to-metal contact points with a de-greaser such as windex. The oils from your fingers have the potential to cause wireless interference issues.
- Perform a [hard reset](#) after reassembly. This can prevent several issues and simplify troubleshooting.

Step 7 — Speaker Enclosure Assembly



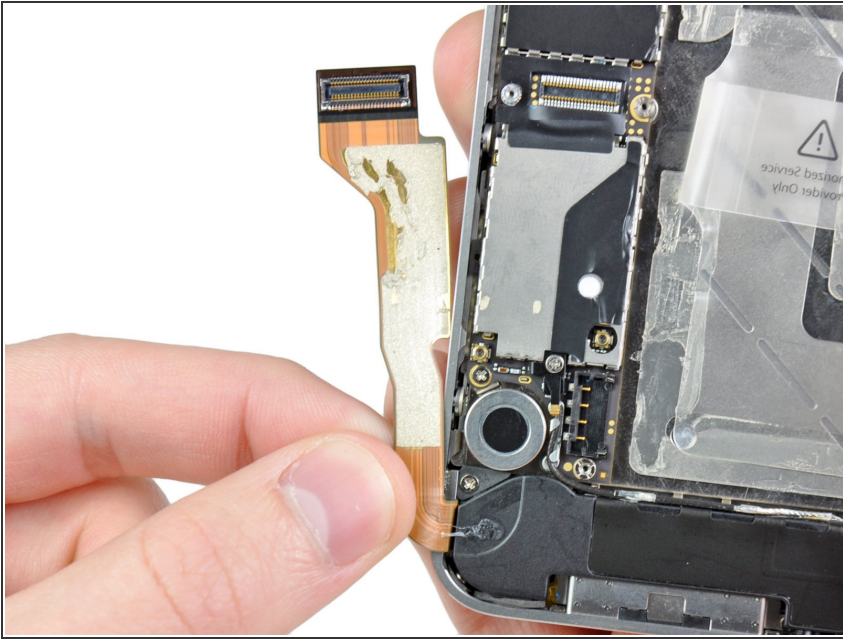
- Remove the two 1.8 mm Phillips screws securing the dock connector cable cover to the logic board.
- Remove the metal dock connector cable cover.

Step 8



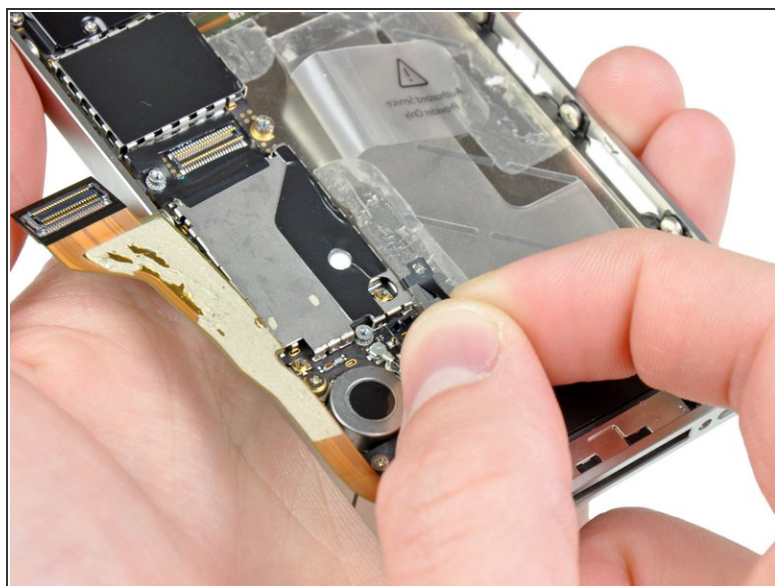
- Use the edge of a plastic opening tool to pry the dock cable up from its socket on the logic board.

Step 9



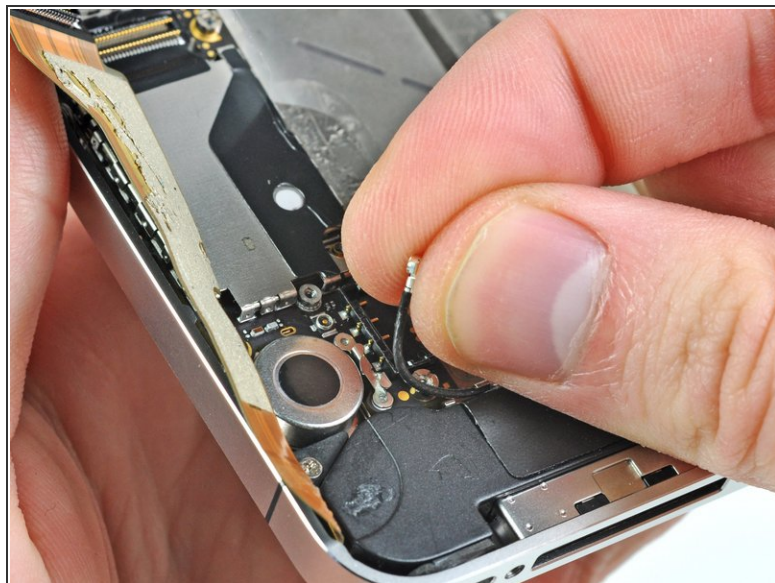
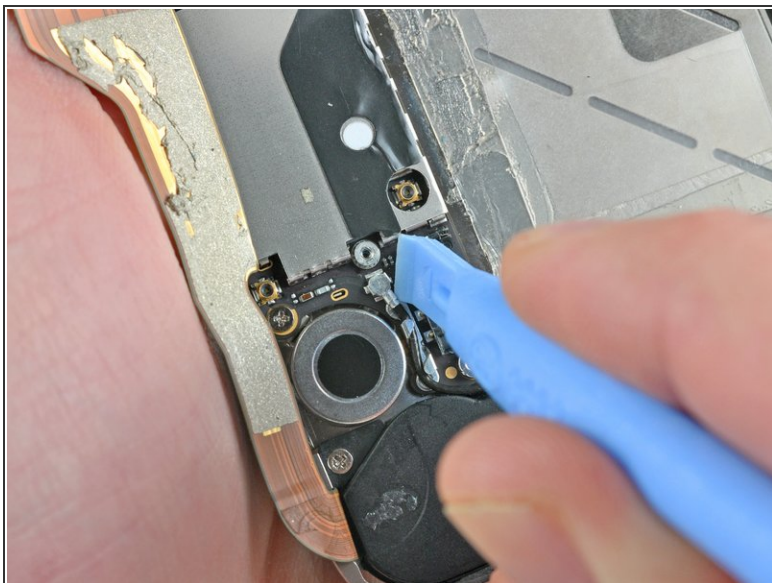
- Peel the dock connector cable off the adhesive securing it to the logic board and the side of the speaker enclosure.

Step 10



- Remove the 1.6 mm Phillips screw securing the pressure contact to the logic board near the vibrator.
 - Remove the pressure contact.
- ⚠ When reinstalling the pressure contact, be sure to clean it with a degreaser such as windex or isopropyl alcohol. The oils on your fingers have the potential to create wireless interference.

Step 11



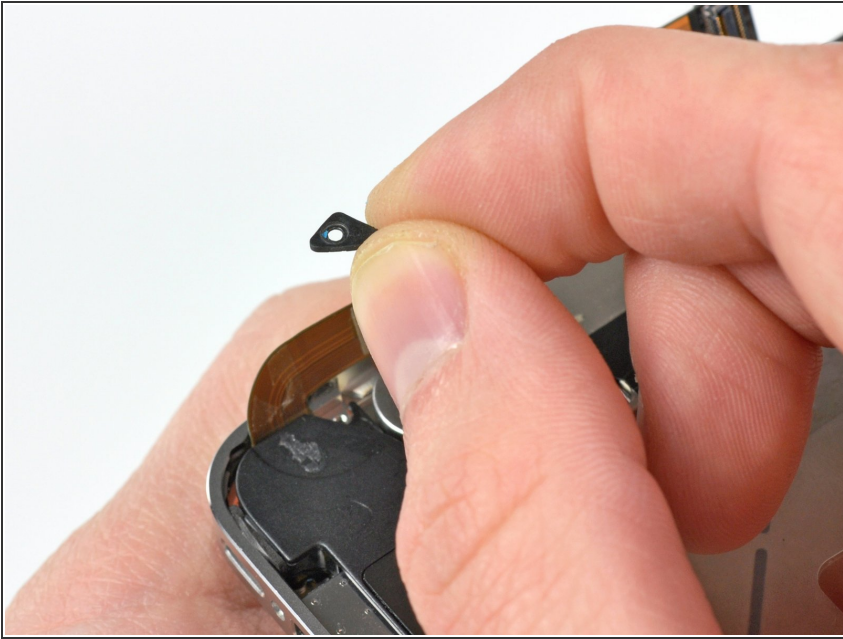
- Use the edge of a plastic opening tool to pry the Wi-Fi antenna cable up from its socket on the logic board.
- De-route the Wi-Fi antenna cable out from under the metal fingers attached to the logic board.

Step 12



- Remove the two 2.4 mm Phillips screws securing the speaker enclosure assembly to the outer case.

Step 13





- Remove the small black spacer that was under the Phillips screw near the vibrator.

Step 14

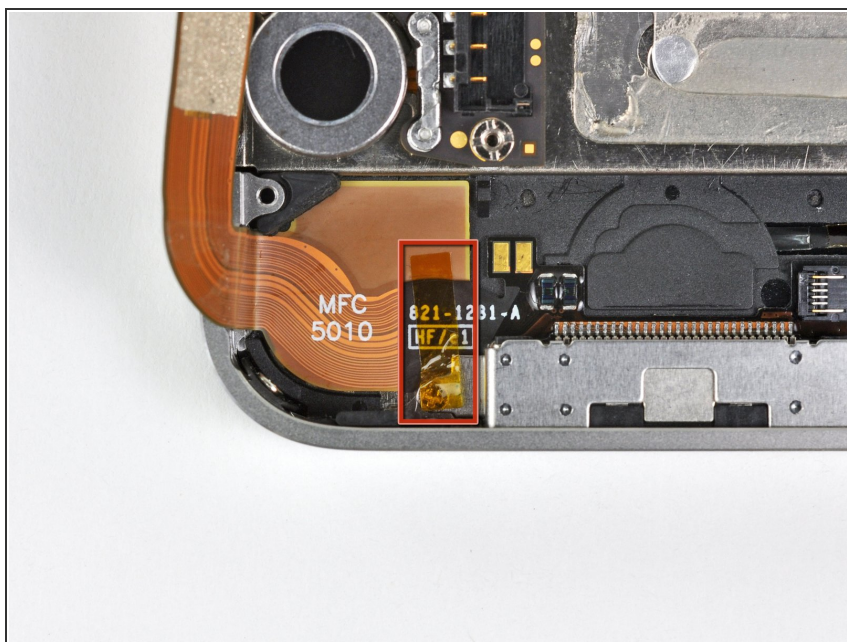


- Use a plastic opening tool to lift the speaker enclosure assembly out of the case, being sure not to damage the EMI fingers on the attached Wi-Fi antenna.
- Remove the speaker enclosure assembly.

 Before reinstalling the speaker enclosure assembly's screws, be sure the Wi-Fi grounding fingers are installed below the lip in the iPhone's metal case as seen in the third picture.

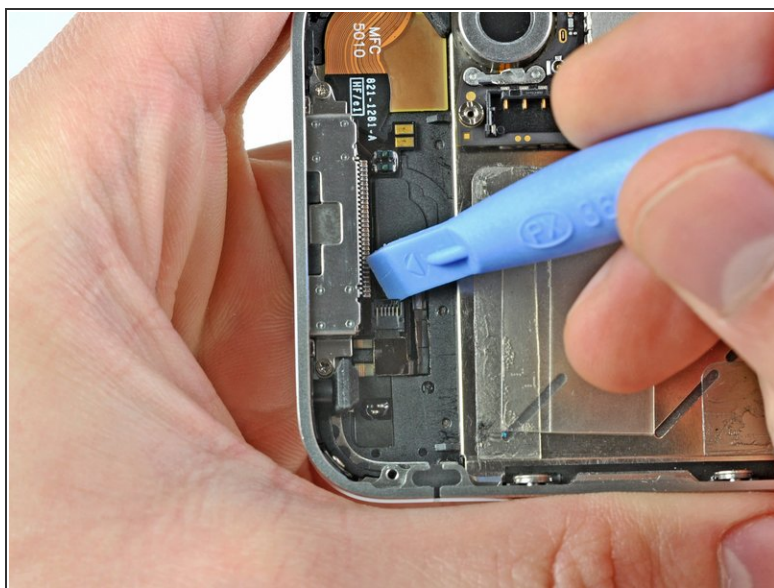
 Before reassembly, be sure to clean all metal-to-metal contact points between the grounding fingers of the Wi-Fi antenna and the case of the iPhone with a de-greaser such as windex or isopropyl alcohol. The oils on your fingers have the potential to cause wireless interference issues.

Step 15 — Dock Connector



- If present, remove the small strip of tape covering one of the dock connector screws.

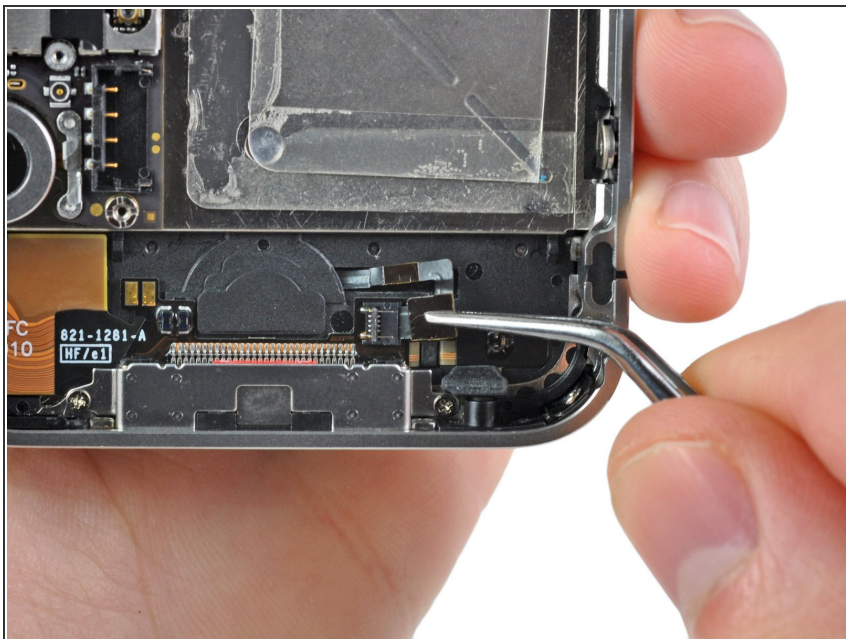
Step 16



- Use a plastic opening tool to flip up the retaining flap on the home button ribbon cable ZIF socket.

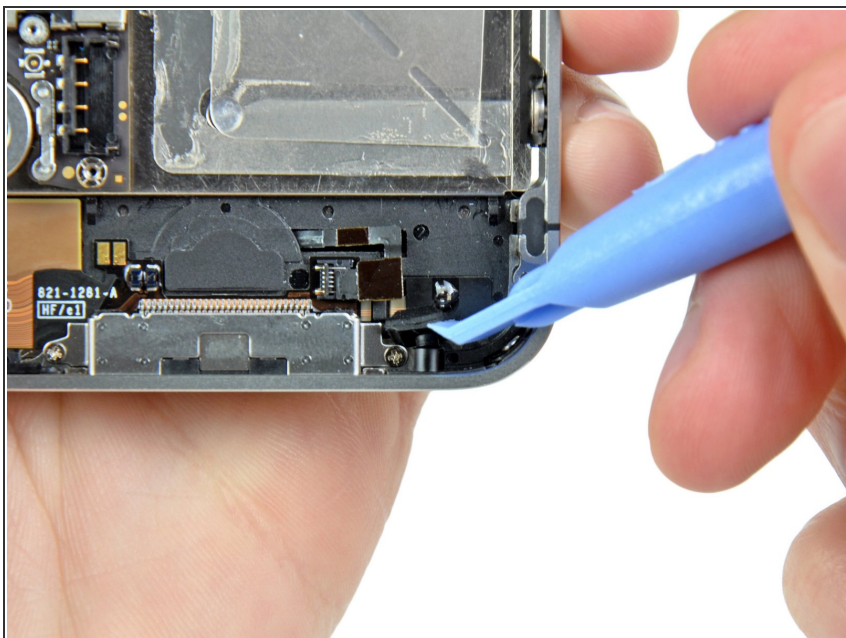
⚠ Be sure you are prying up on the hinged retaining flap, **not** the socket itself.

Step 17



- Use a pair of tweezers to pull the home button ribbon cable out of its socket.

Step 18



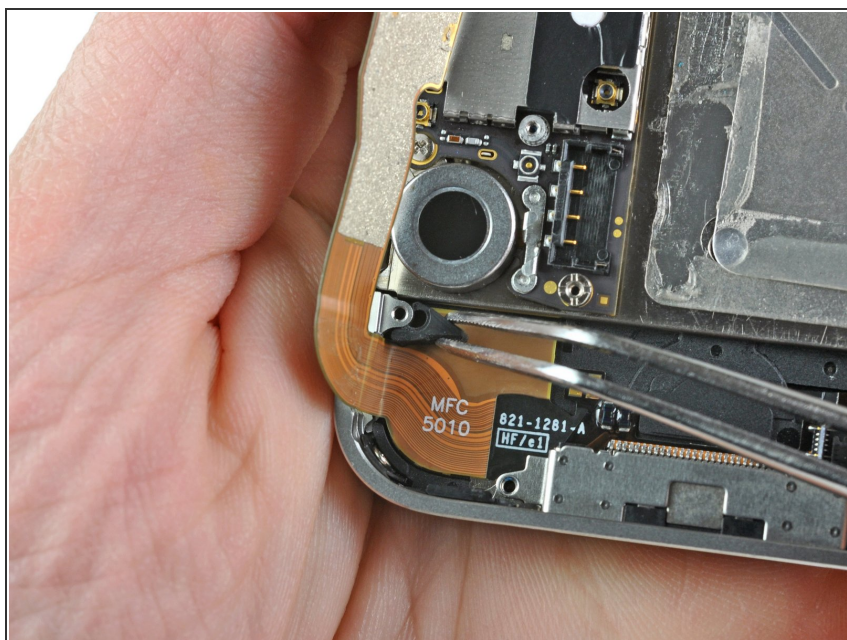
- Carefully pull, but do **not** remove, the rubber microphone holder out of its tube in the bottom edge of the iPhone.

Step 19



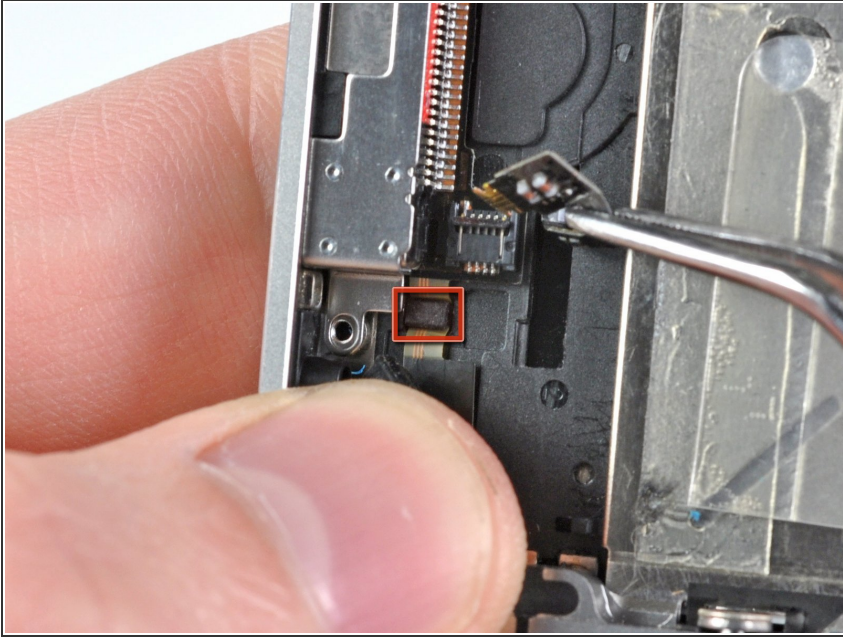
- Remove the two 1.3 mm Phillips screws securing the dock connector to the case of the iPhone.

Step 20



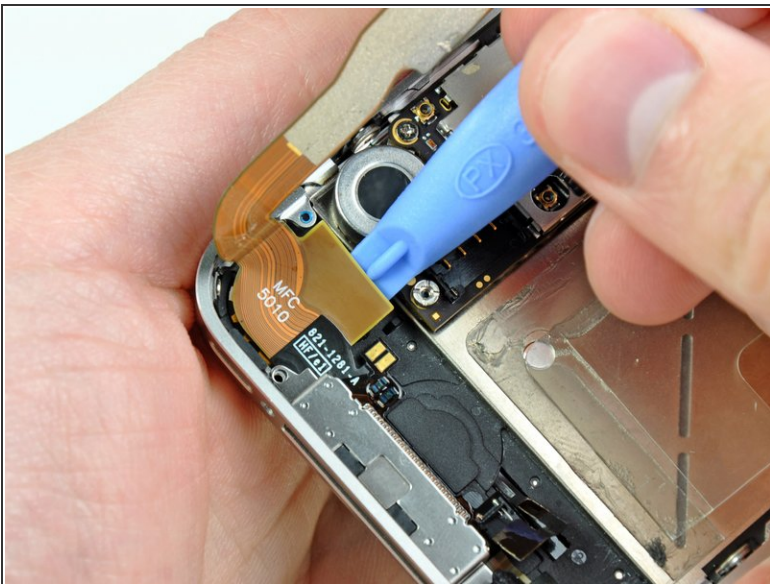
- Use a pair of tweezers to remove the small rubber spacer beneath the speaker enclosure mounting ear near the vibrator.

Step 21



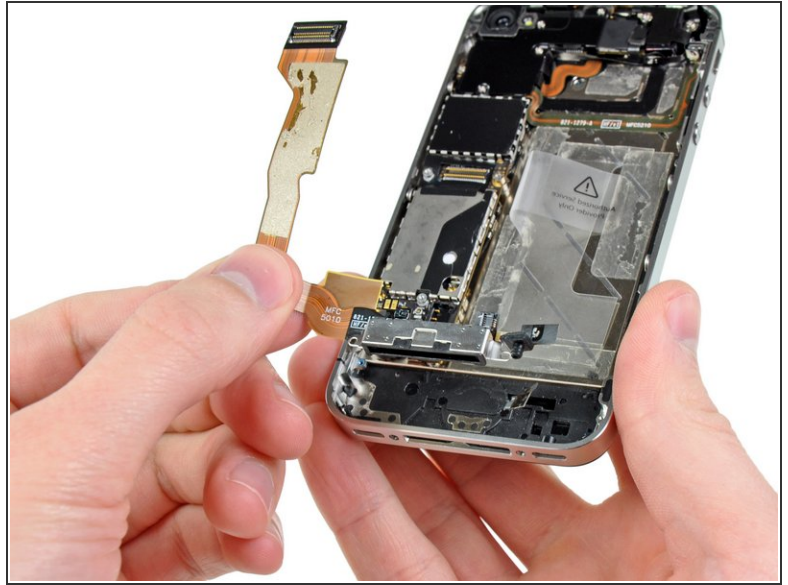
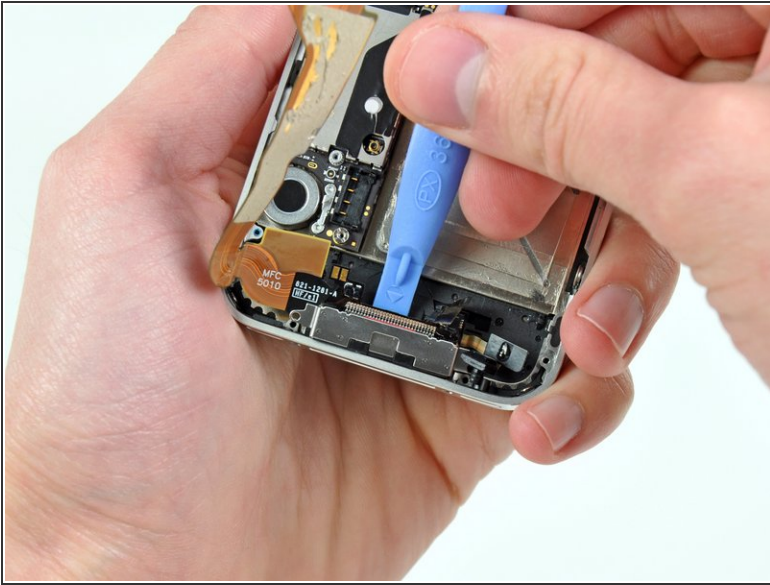
- Remove the tiny rubber spacer near the dock connector.

Step 22



- Use the edge of a plastic opening tool to peel the dock connector and its cable off the black plastic case of the iPhone.
- ⓘ If you are replacing the dock connector with a new part, make sure to transfer the rubber casing around the microphone. You can do this using a spudger.

Step 23



- Pry the dock connector away from its opening at the bottom of the iPhone.
- Remove the dock connector.

To reassemble your device, follow these instructions in reverse order.