



iPhone 4S Power button Replacement

This guide informs you about how to fix a broken power button on the iPhone 4s in just over an hour!

Written By: Miles



INTRODUCTION

Fix your power button by following the steps in this repair guide.

Note: Steps are based on [this guide](#).

TOOLS:

- [P2 Pentalobe Screwdriver iPhone](#) (1)
-

Step 1 — Rear Panel-Opening the Phone



- *Power off your phone before you start repairing
- Remove the two small screws next to the dock connector

Step 2 — Take the Rear Panel off



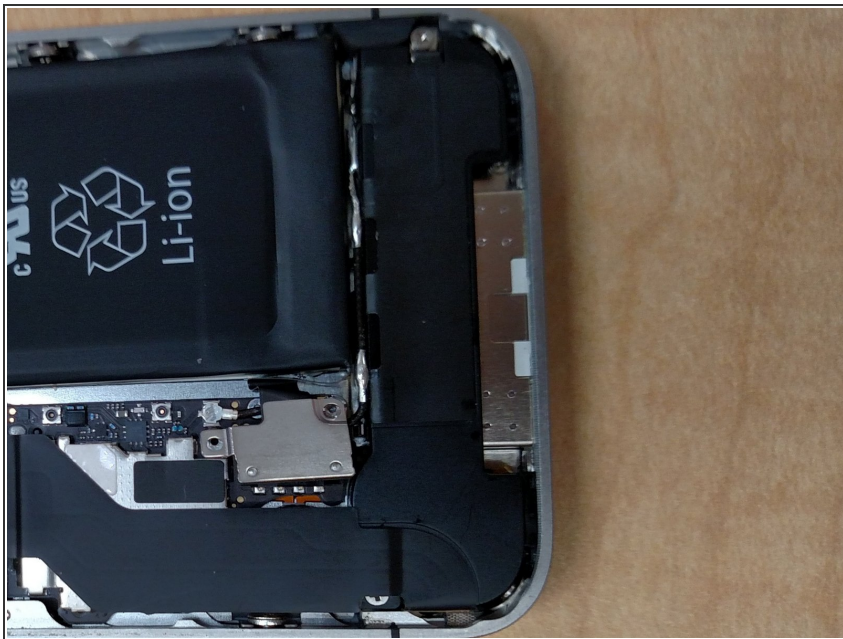
- Use both thumbs to push the rear panel toward the top edge of the iPhone.

Step 3



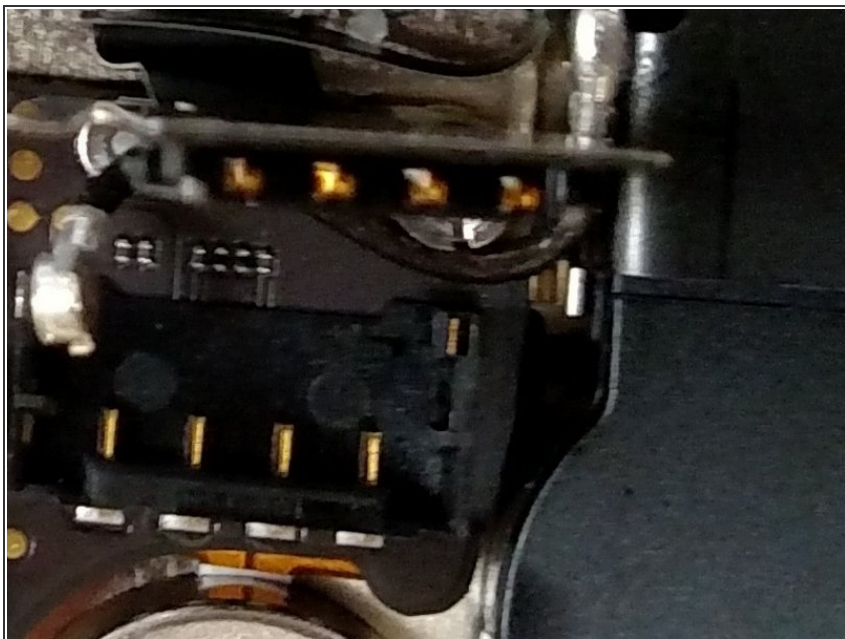
- Carefully pull the rear panel away from the iPhone. Be careful not to break the clips that attach it to the phone.

Step 4



- Remove the two screws securing the battery connector to the logic board
- detach the battery connector from the socket, then lift the bottom side of the connector and by placing the head of the tool in the middle of the speaker and the metal connector.

Step 5



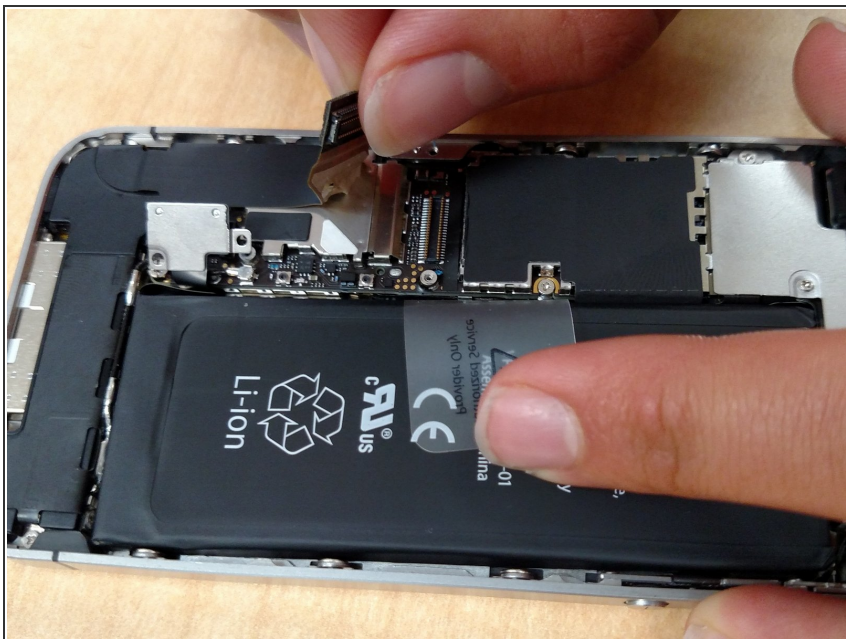
- Use the head of your tool to carefully pull up the pressure contact which is located underneath the battery.
- don't rip the battery connector socket on the logic board, this is an essential part of the iPhone connected by four soldered points.

Step 6



- Unscrew the two screws securing the dock connector cable cover.
- Once completed, Remove the metal dock connector cable cover and place it on a safe area.

Step 7



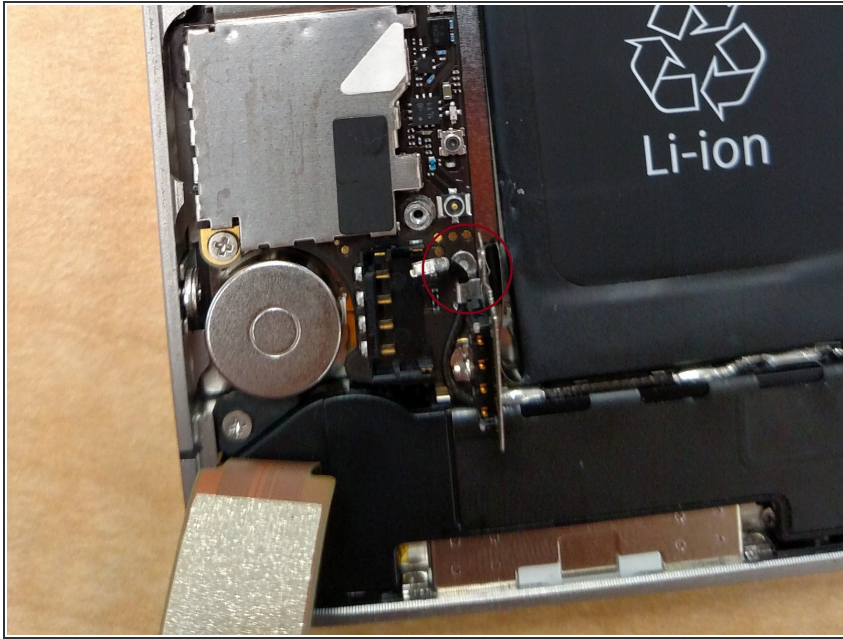
- Use the head of your tool to remove the dock cable up from its socket on the logic board.

Step 8



- Once pulled up, Peel the dock connector cable off the logic board

Step 9



- Unplug the cellular antenna cable out from under the metal fingers attached to the logic board and place it on the same side as the doc connector cable

Step 10



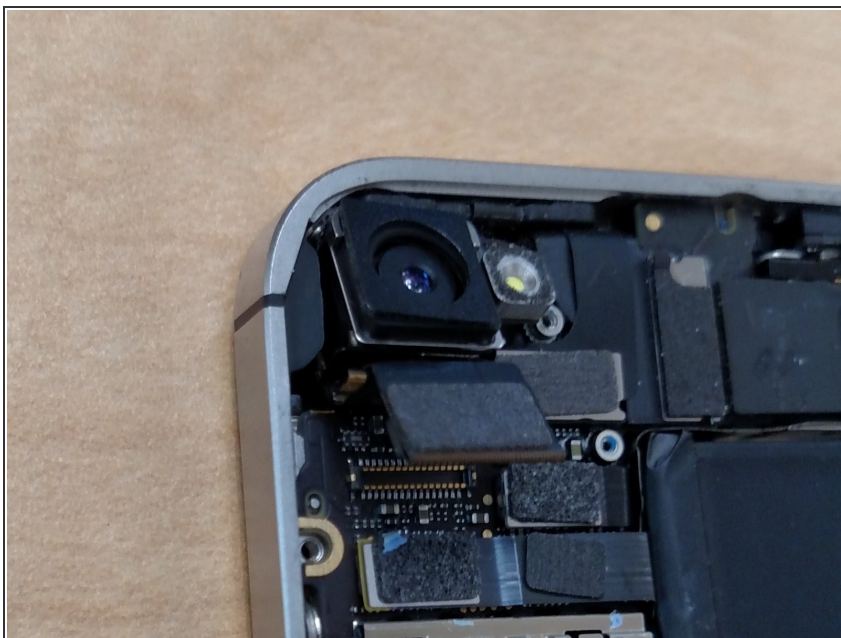
- Take out four screws securing the cable cover to the logic board (the screws highlighted)

Step 11



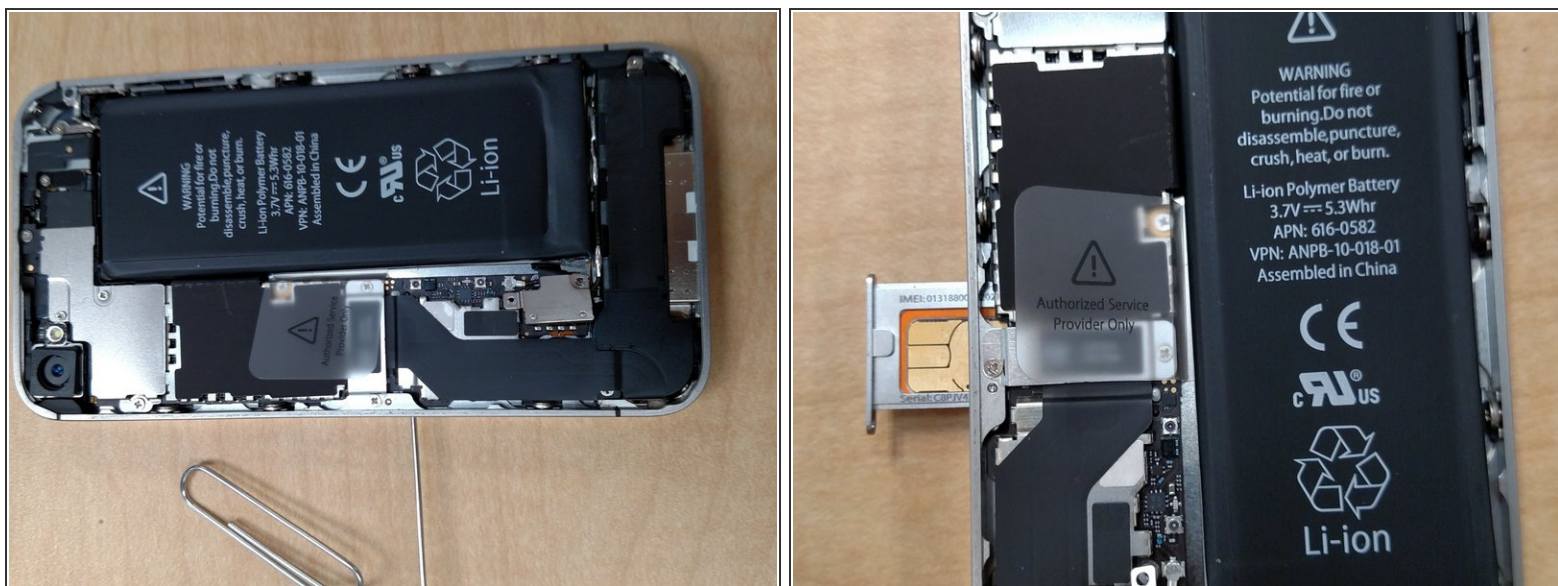
- Use the head of your tool to take off the cable cover tabs out of their slots.
- Once completed, take off the cable cover from its edge nearest the top and remove it and put it in a safe place.

Step 12



- Use the head of your tool to take off the camera connector to the logic board
- The camera is now safe to remove, put it in a safe place

Step 13



- Use a paper clip to eject the sim card and put it in a safe place

Step 14



- Take off the five labeled connectors

Step 15



- Remove the highlighted screw

Step 16



- Pry up the small grounding clip with the head of your tool and then remove it and put it in a safe place

Step 17



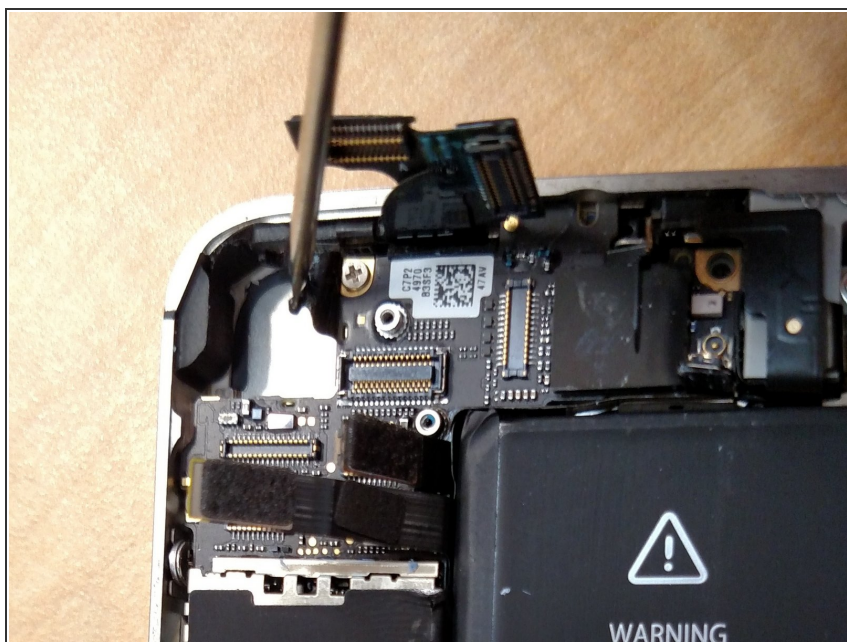
- Remove the highlighted screw

Step 18



- Disconnect the wifi connector highlighted with the head of your tool

Step 19



- Peel up the piece of black tape
- Remove the screw holding in the logic board

Step 20



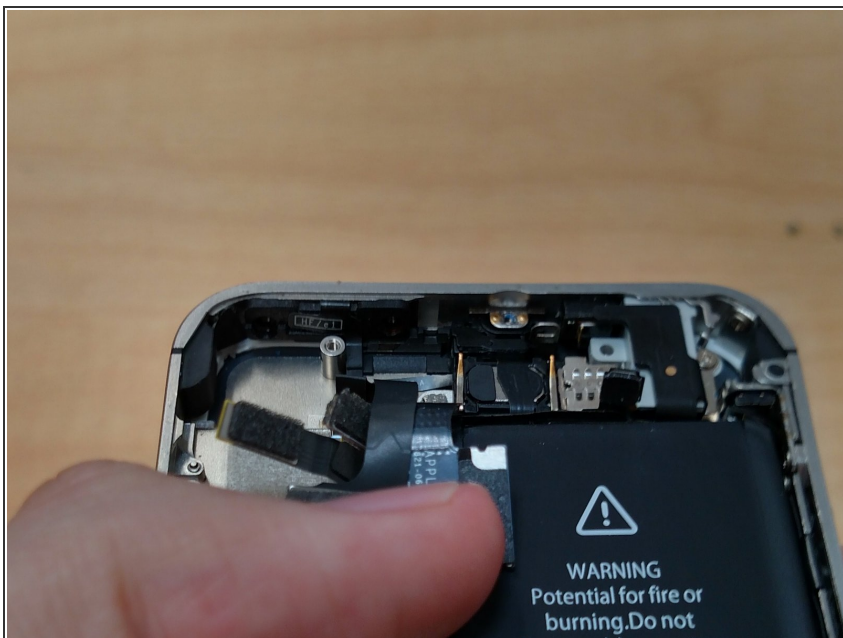
- Remove the selected screws

Step 21



- Lift the logic board from the side that has the speaker
- Remove the logic board.

Step 22



- Take out the two screws keeping the lock button in place

Step 23



- Once done, remove the power button with either tweezers or a sharp object

To reassemble your device, follow these instructions in reverse order.