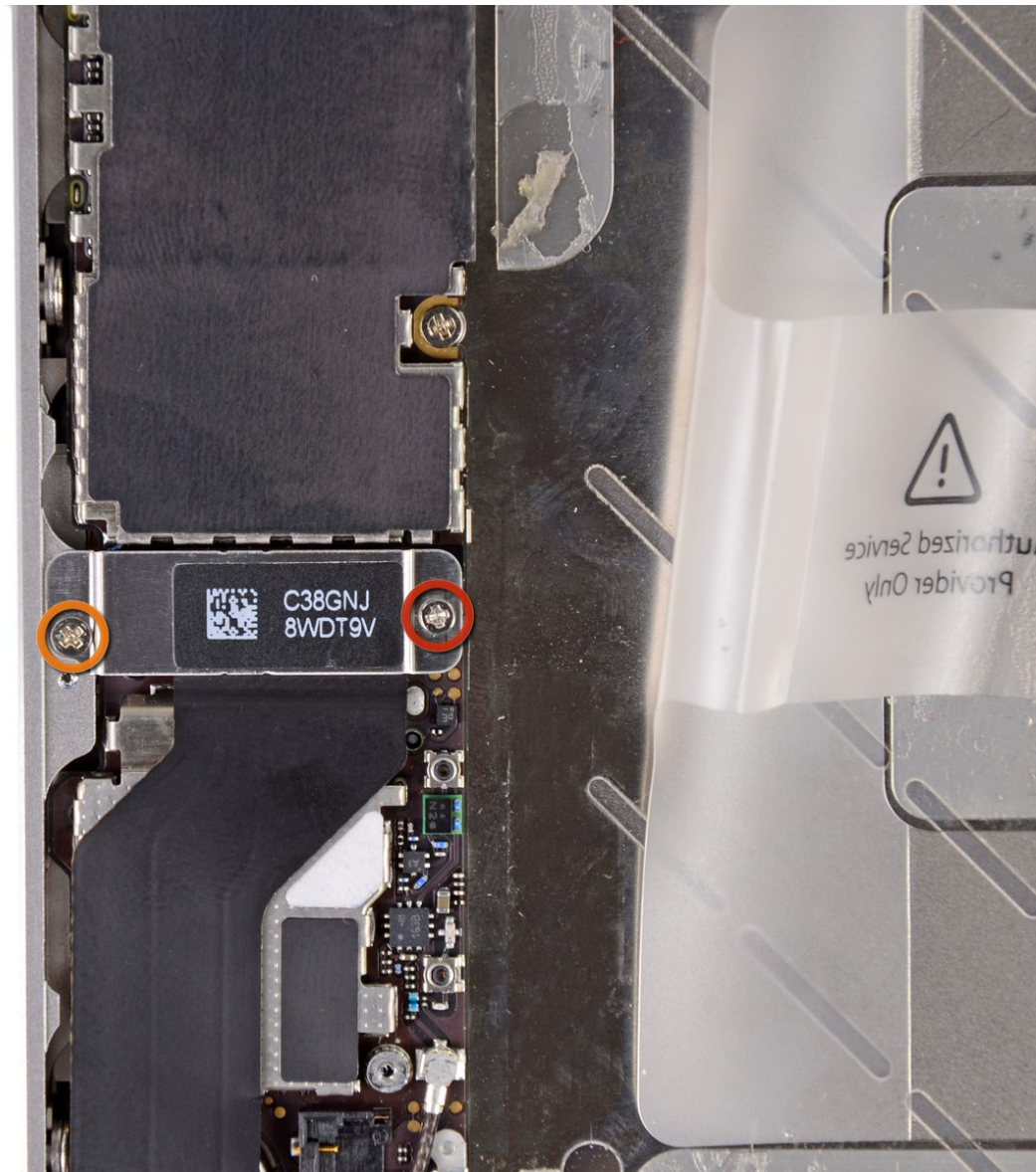




iPhone 4S Speaker Enclosure Assembly Replacement

Prerequisite only.

Written By: Walter Galan



INTRODUCTION

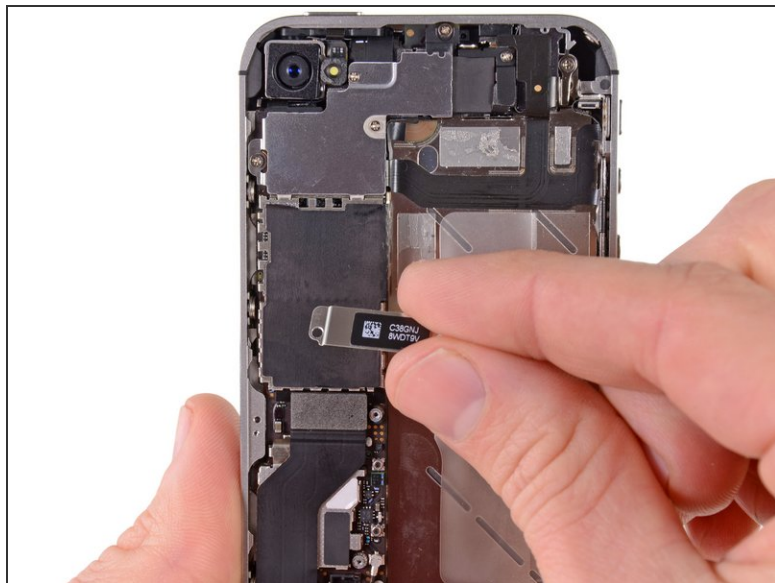
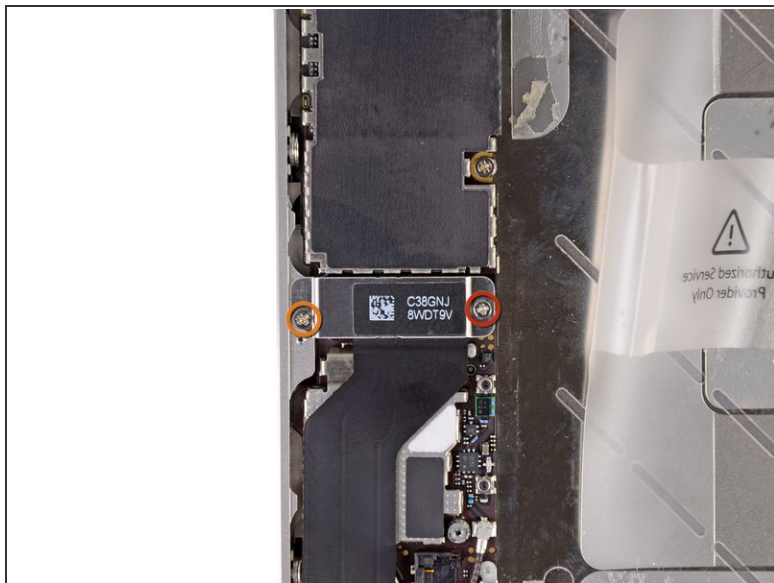
Internal prerequisite.



TOOLS:

- [Phillips #000 Screwdriver](#) (1)
 - [iFixit Opening Tools](#) (1)
-

Step 1 — Speaker Enclosure Assembly



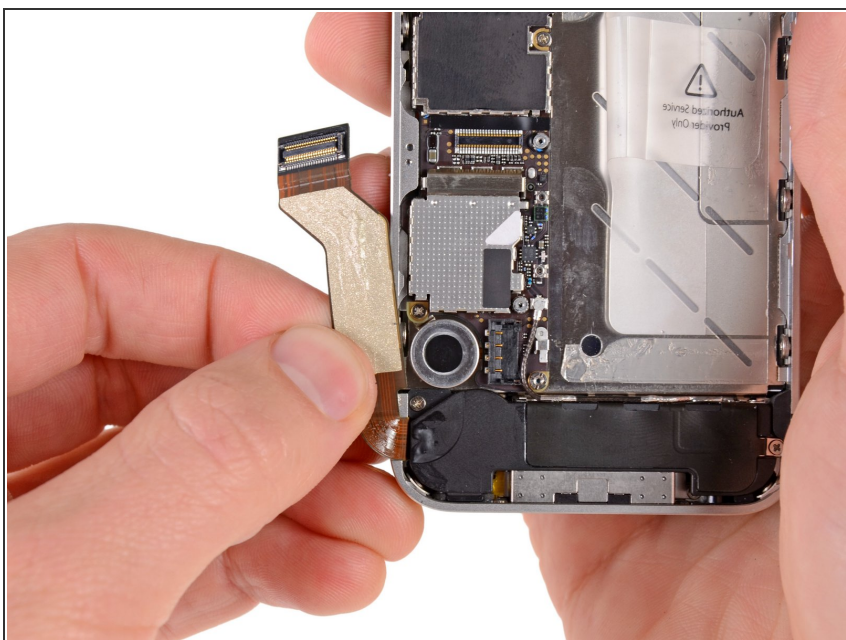
- Remove the following screws securing the dock connector cable cover to the logic board:
 - One 1.5 mm Phillips screw
 - One 1.2 mm Phillips screw
- Remove the metal dock connector cable cover.

Step 2



- Use the edge of a plastic opening tool to pry the dock cable up from its socket on the logic board.

Step 3



- Peel the dock connector cable off the adhesive securing it to the logic board and the side of the speaker enclosure.

Step 4



- Use the edge of a plastic opening tool to pry the cellular antenna cable up from its socket on the logic board.
- De-route the cellular antenna cable out from under the metal fingers attached to the logic board.

Step 5



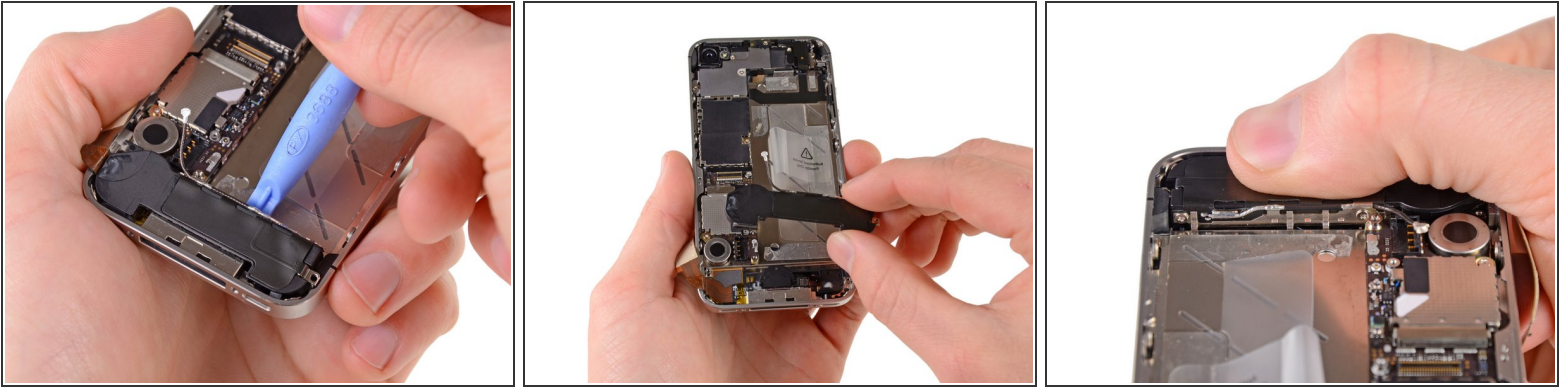
- Remove the two 2.4 mm Phillips screws securing the speaker enclosure assembly to the outer case.

Step 6



- Remove the small black spacer that was under the Phillips screw near the vibrator.

Step 7



- Use a plastic opening tool to lift the speaker enclosure assembly out of the case, being sure not to damage the EMI fingers on the attached Wi-Fi antenna.
 - Remove the speaker enclosure assembly.
- ✦ Before reinstalling the speaker enclosure assembly's screws, be sure the Wi-Fi grounding fingers are installed below the lip in the iPhone's metal case as seen in the third picture.
- ⚠ Before reassembly, be sure to clean all metal-to-metal contact points between the grounding fingers of the Wi-Fi antenna and the case of the iPhone with a de-greaser such as windex or isopropyl alcohol. The oils on your fingers have the potential to cause wireless interference issues.

To reassemble your device, follow these instructions in reverse order.