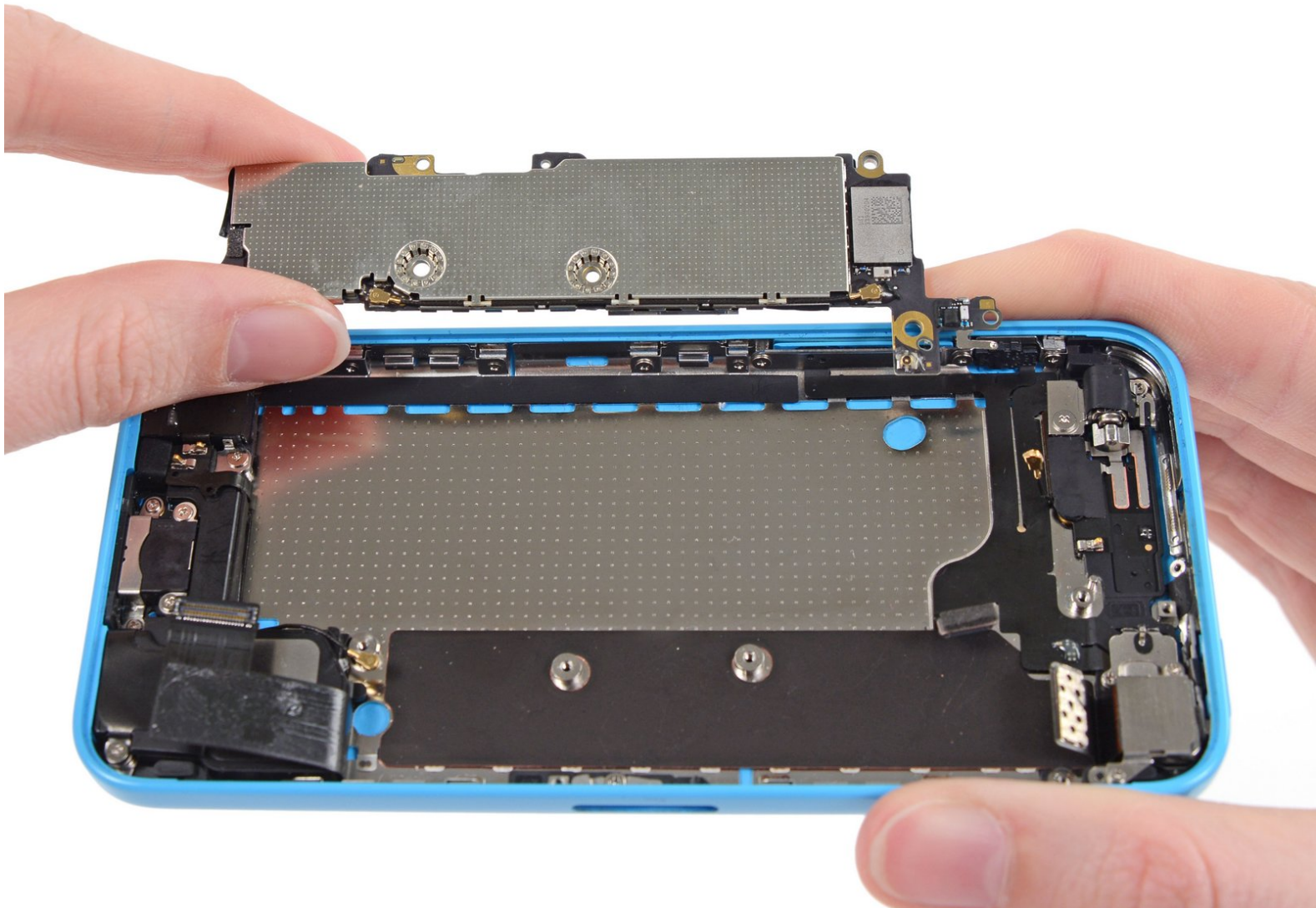




iPhone 5c Logic Board Replacement

Prereq logic board removal for upper component cable guide.

Written By: Andrew Optimus Goldheart

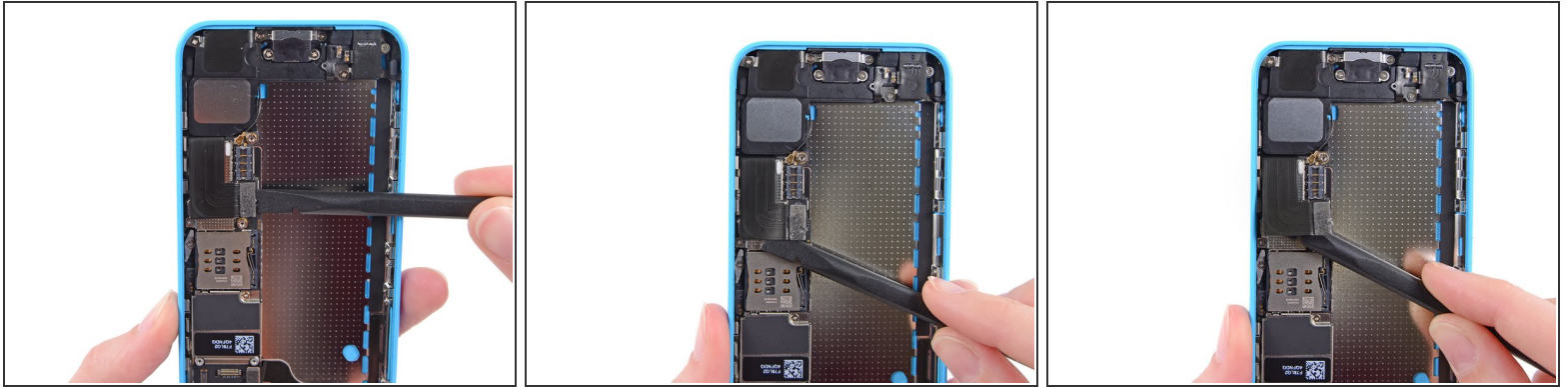




TOOLS:

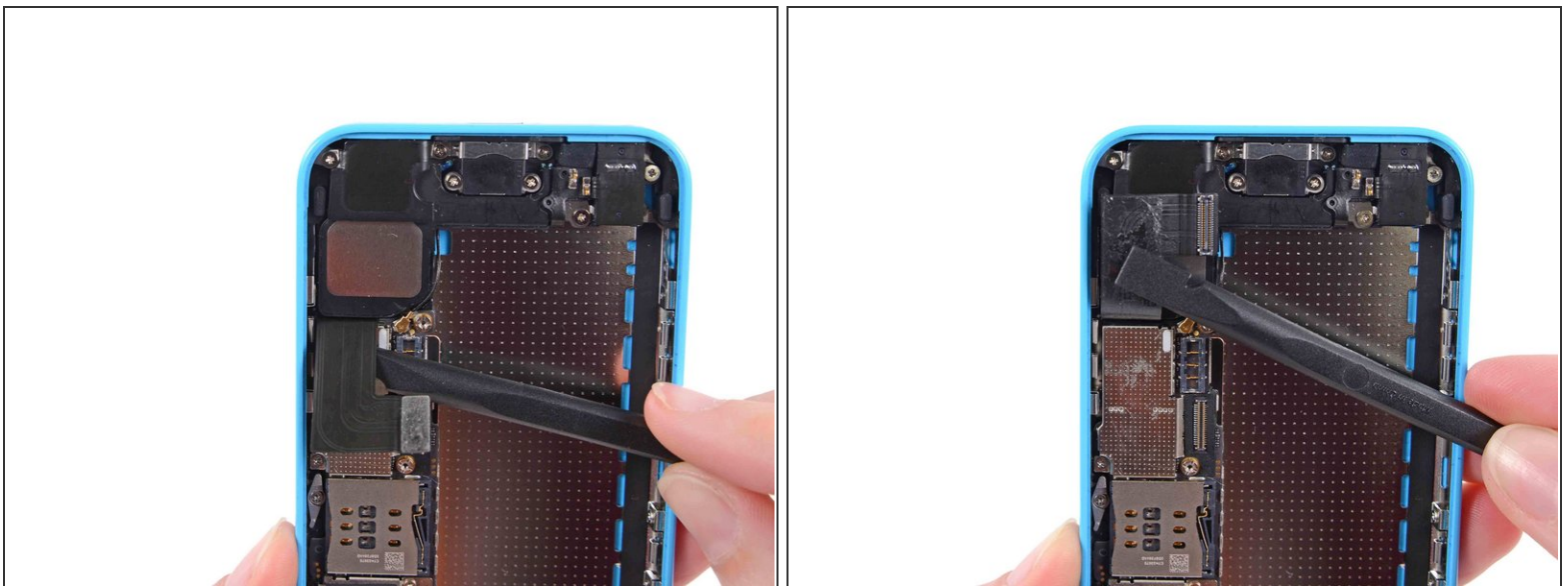
- [Phillips #000 Screwdriver](#) (1)
 - [Spudger](#) (1)
 - [Tweezers](#) (1)
-

Step 1 — Logic Board



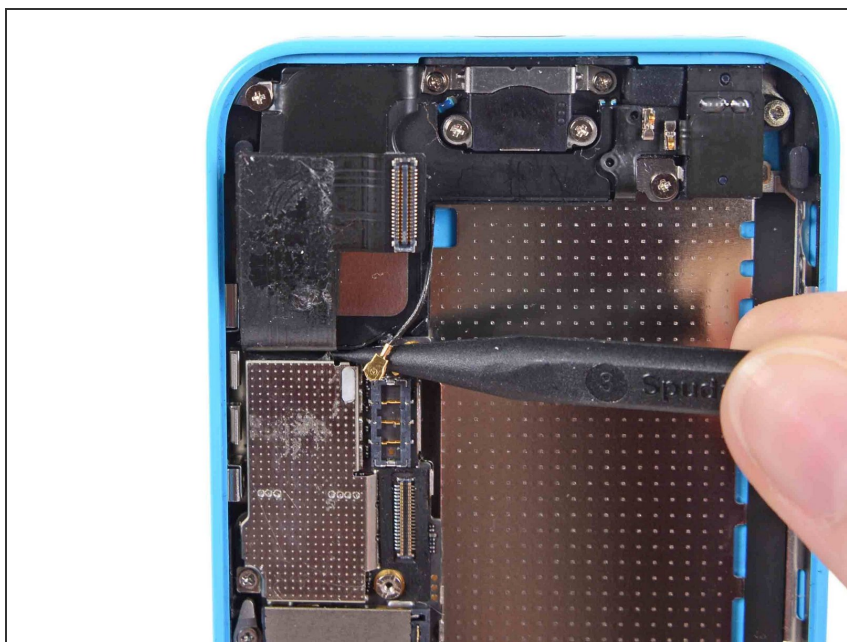
- Use a spudger to disconnect the Lightning connector ribbon cable from its socket on the logic board.
- The Lightning connector cable is lightly adhered to a shield on the logic board. Use the flat end of a spudger to gently peel the cable up.

Step 2



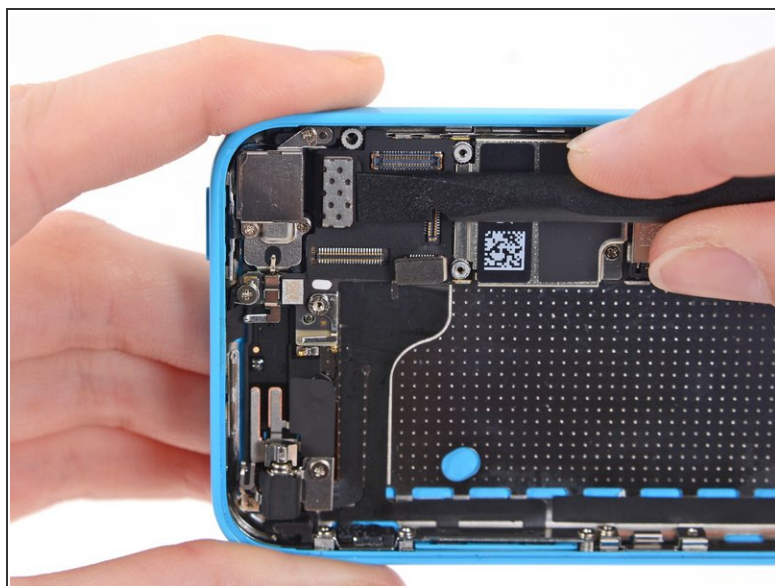
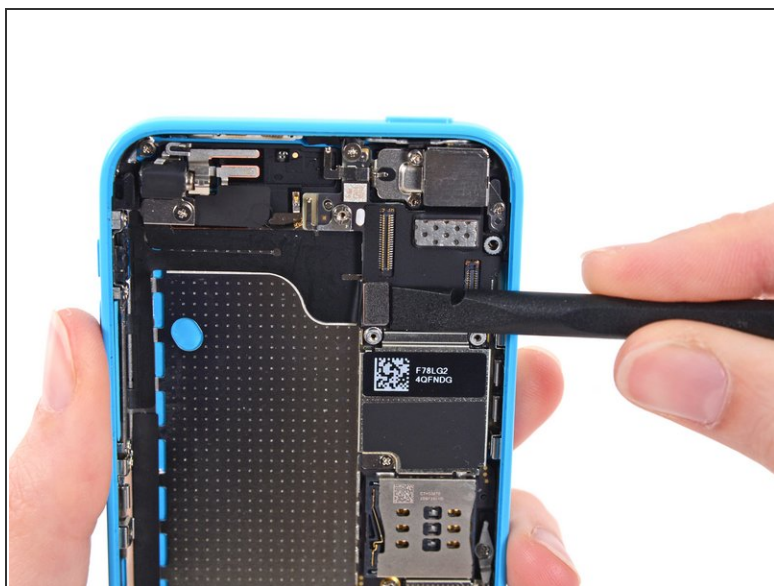
- Flip the Lightning connector cable up out of the way of the logic board.

Step 3



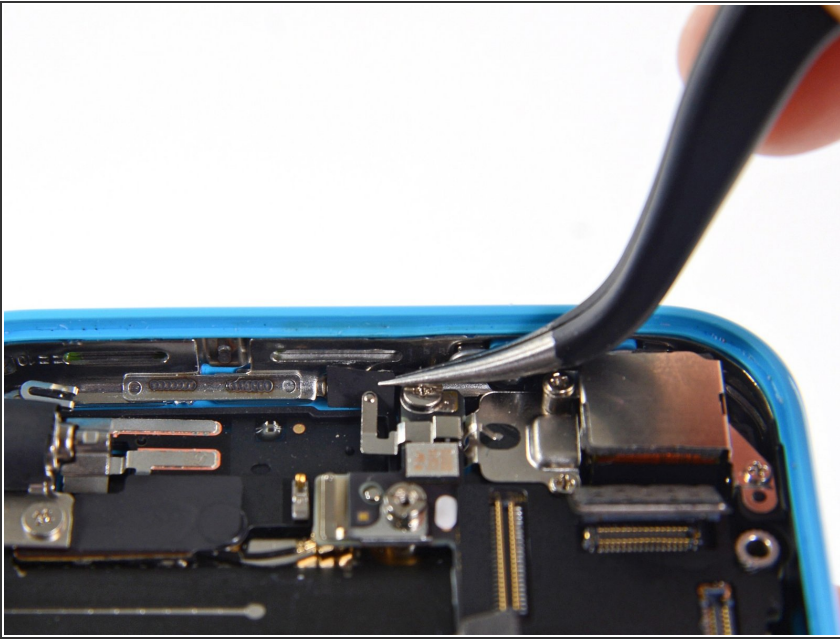
- Disconnect the lower antenna connector from the base of the logic board.

Step 4



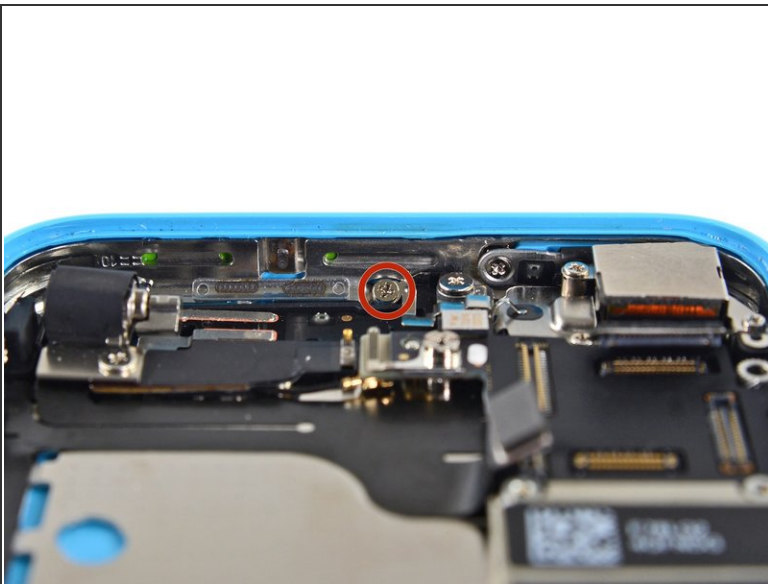
- Use the flat end of a spudger to disconnect the audio control cable connector from its socket on the logic board.
- Disconnect the rear-facing camera cable connector from its socket on the logic board.

Step 5



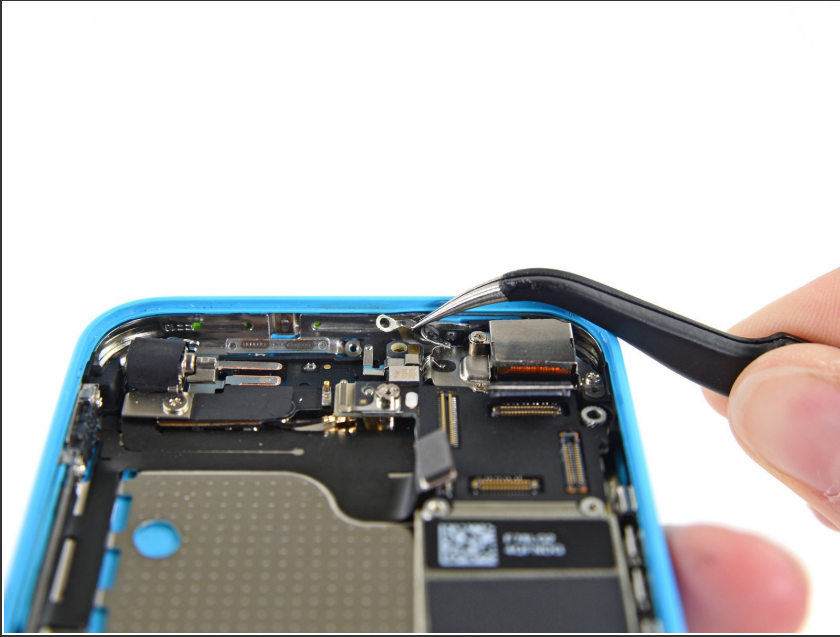
- A small piece of tape may obscure the logic board grounding clip. If so, use a pair of tweezers to remove the tape.

Step 6



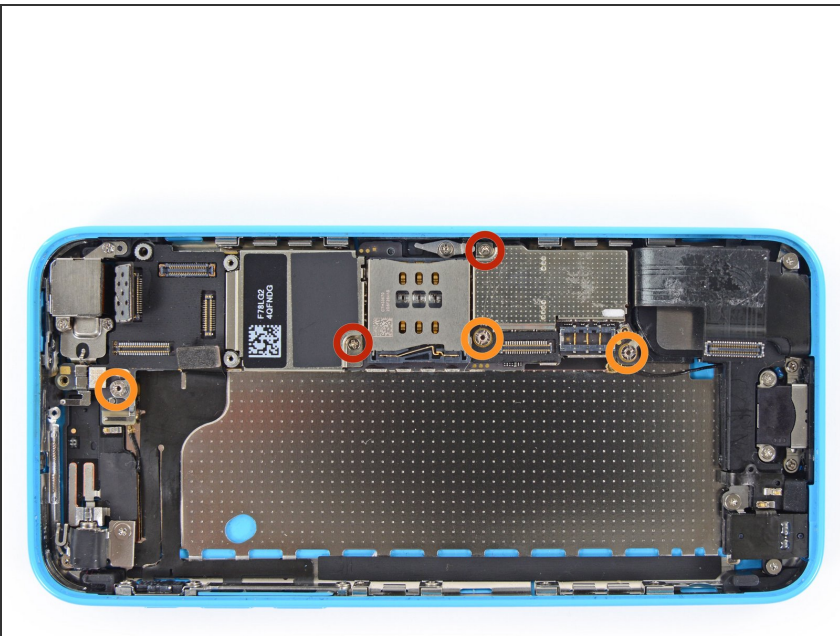
- Remove the following screws securing the logic board grounding clip to the rear case:
 - 1.2 mm Phillips #000 in the top side-wall
 - 2.5 mm Phillips #000

Step 7



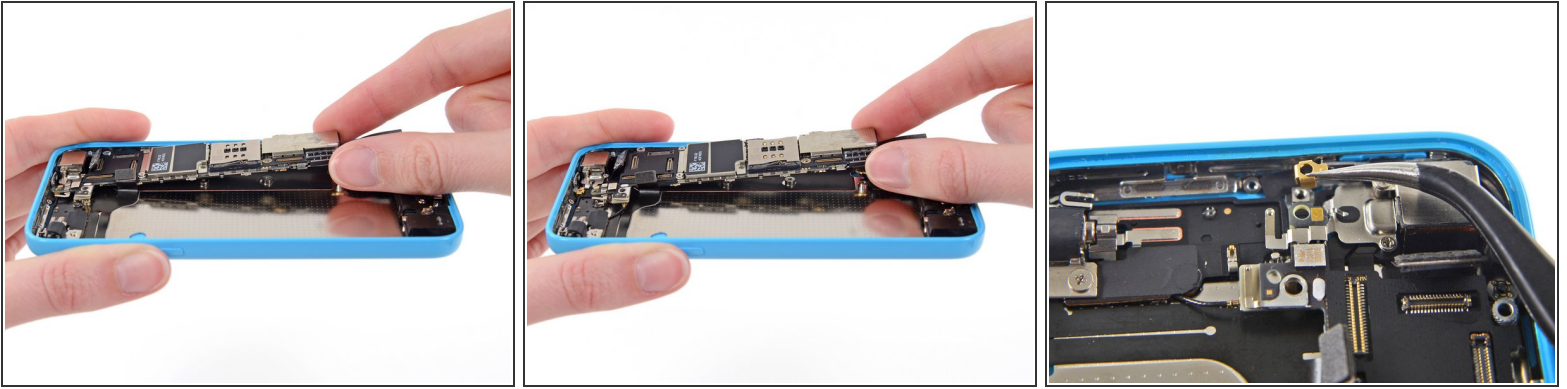
- Use tweezers to remove the logic board grounding clip.

Step 8



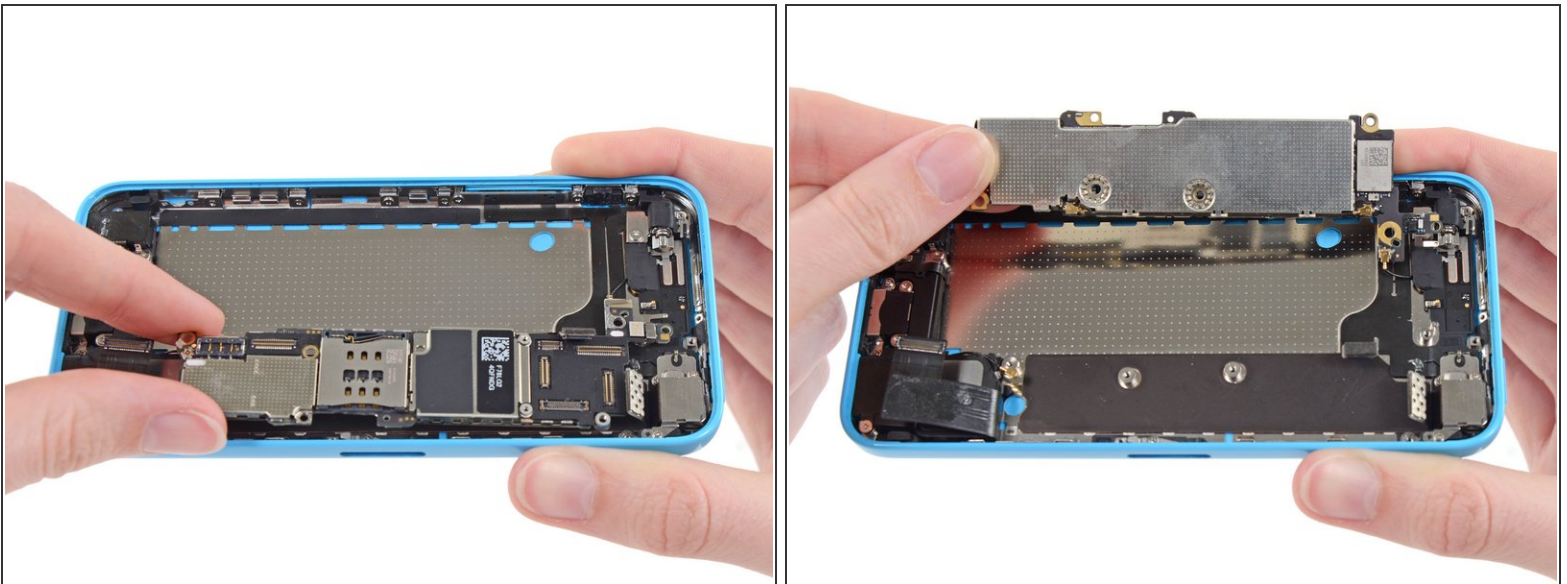
- Remove the following screws securing the logic board to the rear case:
 - Two 2.3 mm Phillips screws
 - Three 2.7 mm standoff screws
- ⓘ Standoff screws are best removed with a [standoff screwdriver](#) or [standoff driver bit](#). A small flathead screwdriver can also do the job—but use extra caution to ensure it doesn't slip and damage surrounding components.

Step 9



- Holding the phone level, lift the bottom end of the logic board up enough to grasp it with your fingers.
- Pull the logic board away from the rear-facing camera just enough to expose the gold contact cap under the top end of the board.
- Remove the gold-colored contact cap from the threaded post in the rear case, and set it aside.

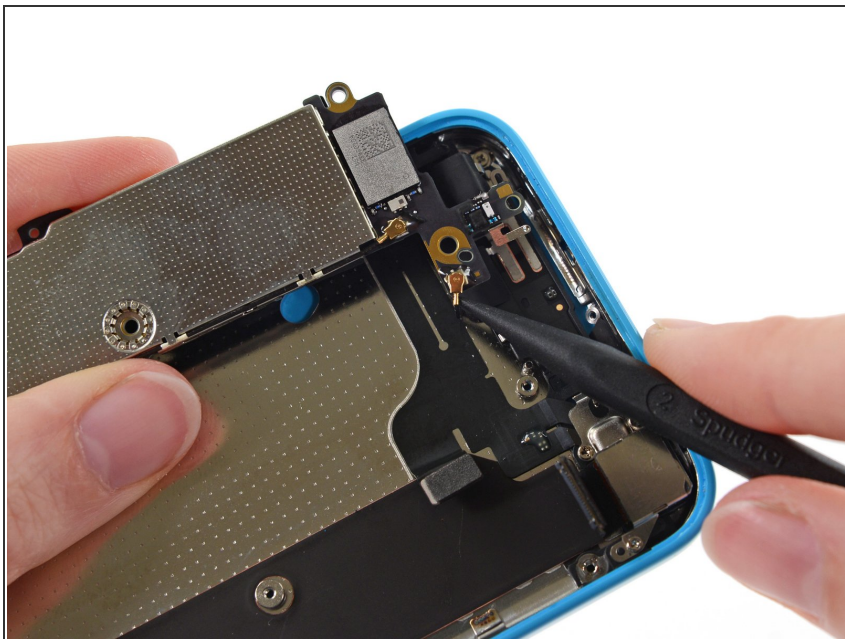
Step 10



- Flip the logic board up toward the volume control buttons to expose the antenna connector.

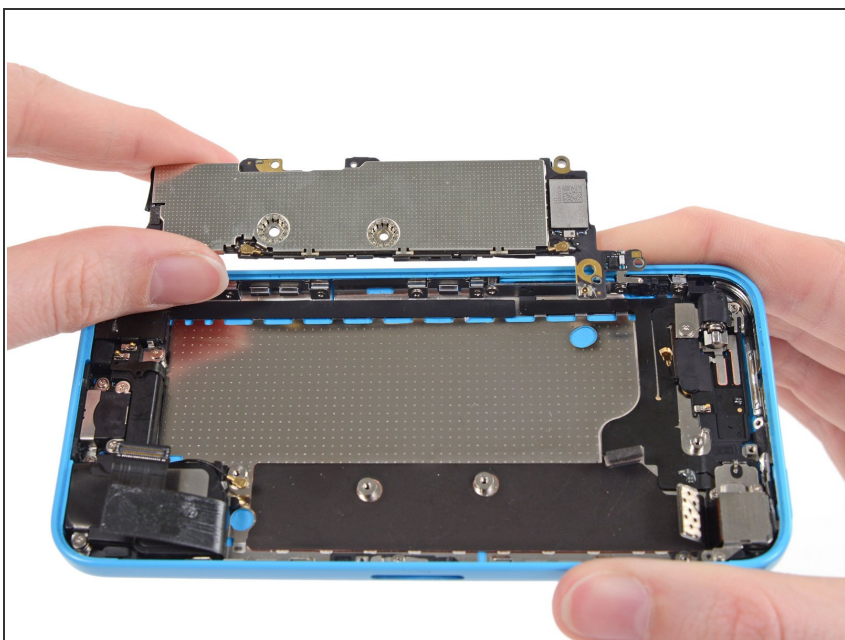
⚠ Do not try to remove the logic board from the rear case yet, as it is still connected by an antenna cable on the back.

Step 11



- Disconnect the antenna connector from the back of the logic board.

Step 12



- Remove the logic board from the rear case.

To reassemble your device, follow these instructions in reverse order.