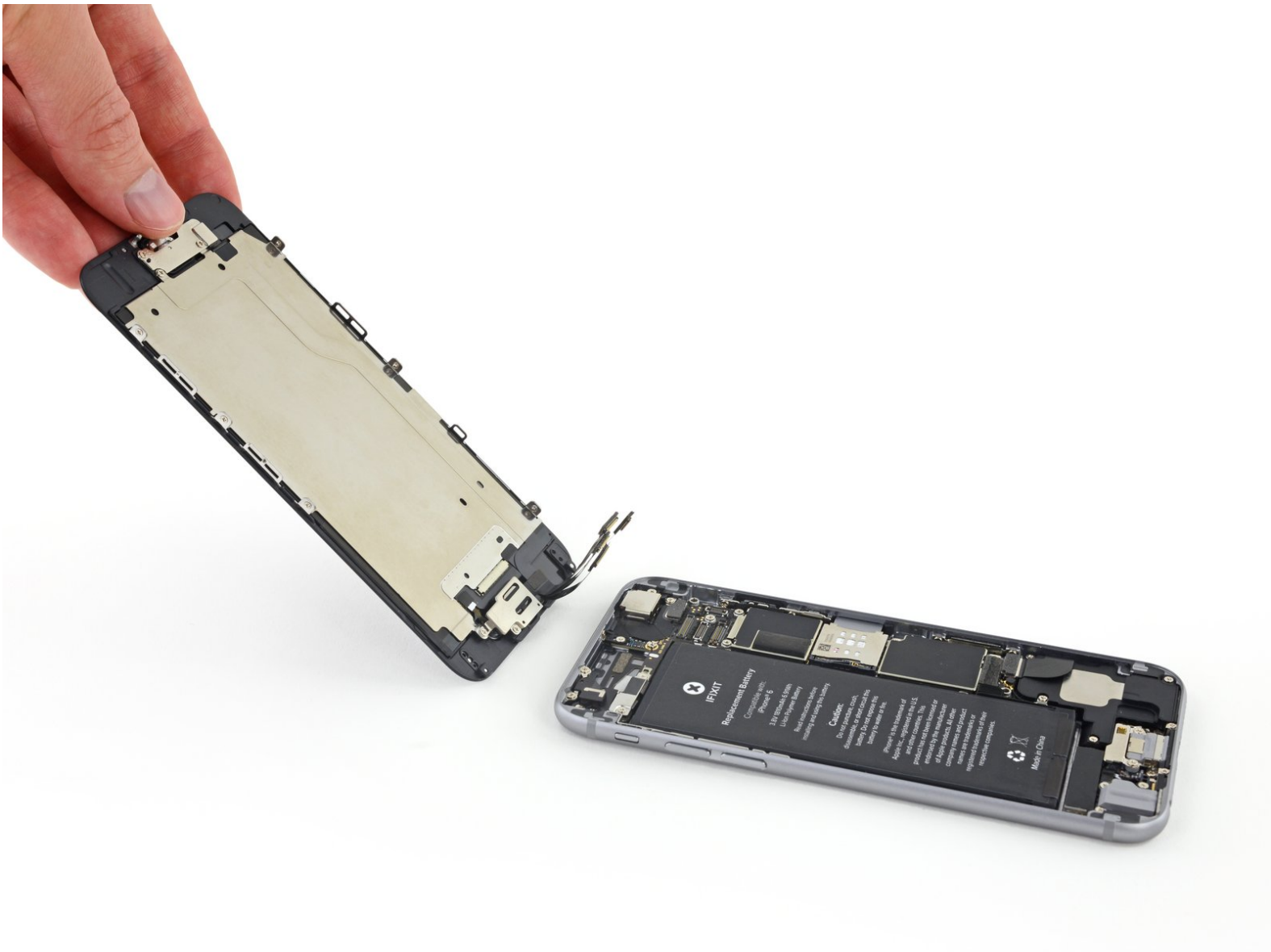




# iPhone 6 Front Panel Assembly Replacement

Prereq to remove the front panel assembly after disconnecting the battery.

Written By: Walter Galan



# INTRODUCTION

Prereq only



## TOOLS:

- [P2 Pentalobe Screwdriver iPhone](#) (1)
- [iSlack](#) (1)
- [Suction Handle](#) (1)
- [iFixit Opening Tools](#) (1)
- [Tweezers](#) (1)
- [Phillips #000 Screwdriver](#) (1)
- [Spudger](#) (1)



## PARTS:

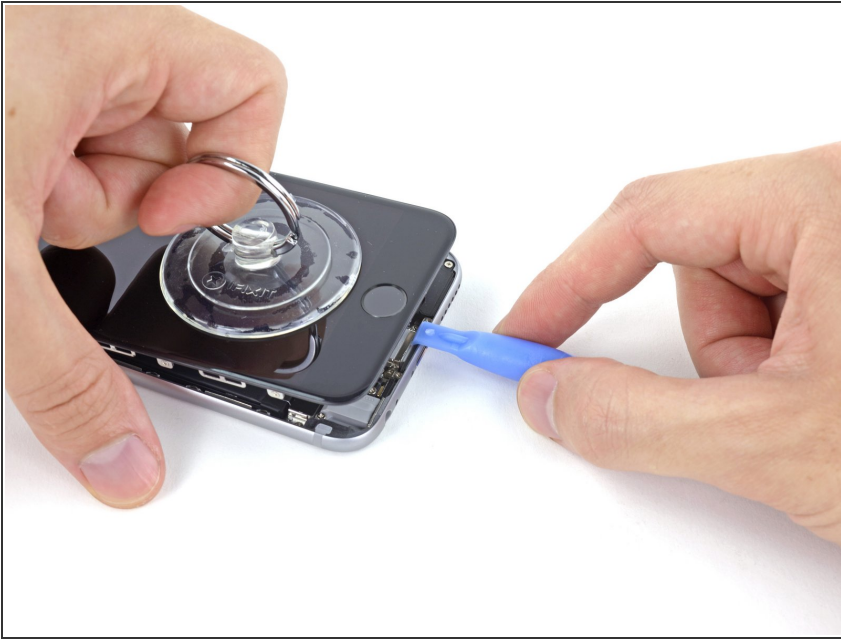
- [iPhone 6 Screen](#) (1)
- [iPhone 6 LCD and Digitizer](#) (1)
- [iPhone 6 Front Panel Assembly Cable Bracket](#) (1)

## Step 1 — Manual Opening Procedure



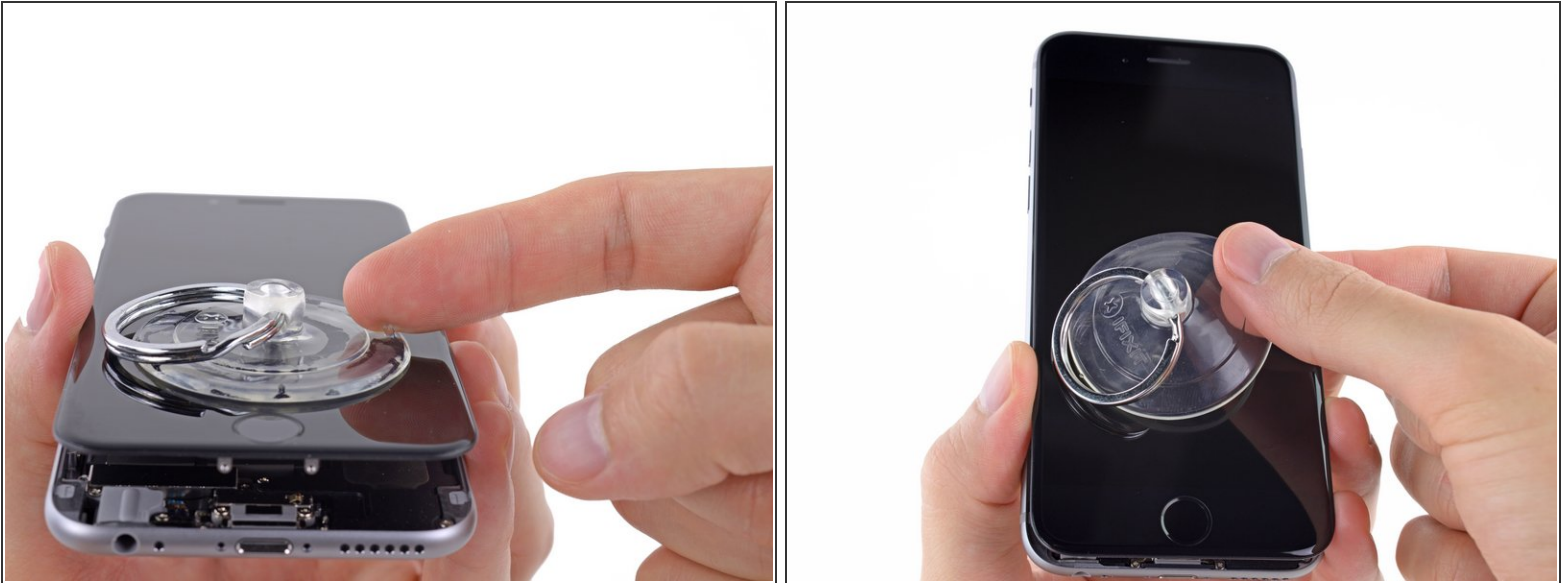
- If you don't have an iSlack, use a single suction cup to lift the front panel:
  - Press a suction cup onto the screen, just above the home button.
- ⓘ Be sure the cup is pressed securely onto the screen to get a tight seal.
- ⓘ If your display is badly cracked, [covering it with a layer of clear packing tape](#) may allow the suction cup to adhere. Alternatively, very strong tape may be used instead of the suction cup. If all else fails, you can superglue the suction cup to the broken screen.

## Step 2



- While holding the iPhone down with one hand, pull up on the suction cup to slightly separate the front panel assembly from the rear case.
- ⚠ Take your time and apply firm, constant force. The display assembly is a much tighter fit than most devices.
- Using a plastic opening tool, begin to gently pry the rear case down, away from the display assembly, while continuing to pull up with the suction cup.
- ⓘ There are several clips holding the front panel assembly to the rear case, so you may need to use a combination of the suction cup and plastic opening tool to free the front panel assembly.

### Step 3



- Pull the plastic nub to release the vacuum seal on the suction cup.
- Remove the suction cup from the display assembly.

### Step 4 — Opening up the phone



- Open the iPhone by swinging the home button end of the front panel assembly away from the rear case, using the top of the phone as a hinge.
  - ⓘ Several clips along the top edge of the front panel form a partial hinge.
  - ☑ During reassembly, align the clips just below the top edge of the rear case. Then, slide the front panel upward until its top edge is flush with that of the rear case.



## Step 5



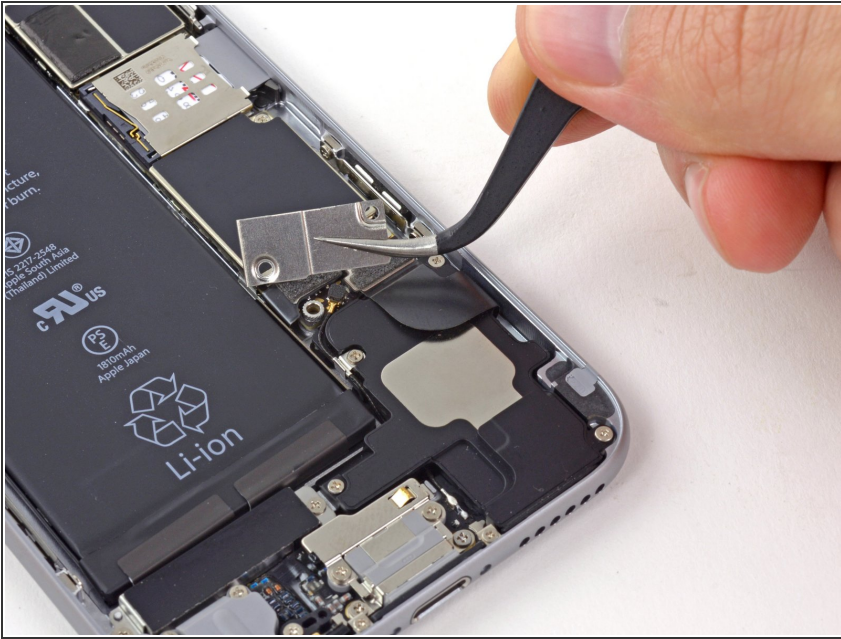
- Open the display to about a 90° angle, and lean it against something to keep it propped up while you're working on the phone.
  - ❗ In a pinch, an unopened canned beverage works well for this.
- Add a rubber band to keep the display securely in place while you work. This prevents undue strain on the display cables.

## Step 6 — Removing the battery connector bracket screws



- Remove the following Phillips screws from the battery connector bracket:
  - One 2.2 mm screw
  - One 3.2 mm screw
- ❗ During your repair, [keep track of each screw](#) and make sure it goes back exactly where it came from to avoid damaging your phone.

## Step 7



- Remove the metal battery connector bracket from the iPhone.

## Step 8 — Disconnecting the battery connector



- Use a plastic opening tool to gently pry the battery connector up from its socket on the logic board.
- ⚠ Take care to only pry up on the battery connector, and not the socket on the logic board. If you pry up on the logic board socket, you may break the connector entirely.

## Step 9 — Removing the front panel assembly cable bracket screws

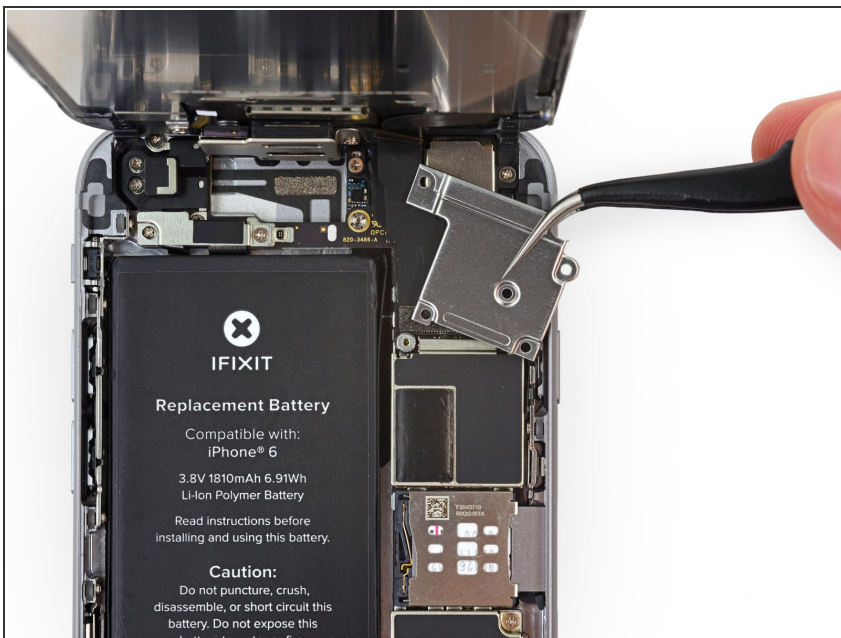


- Remove the following five Phillips screws securing the front panel assembly cable bracket:

- Three 1.2 mm screws
- One 1.7 mm screw
- One 3.1 mm screw

⚠ Incorrect placement of these screws during reassembly will cause permanent damage to your iPhone's logic board.

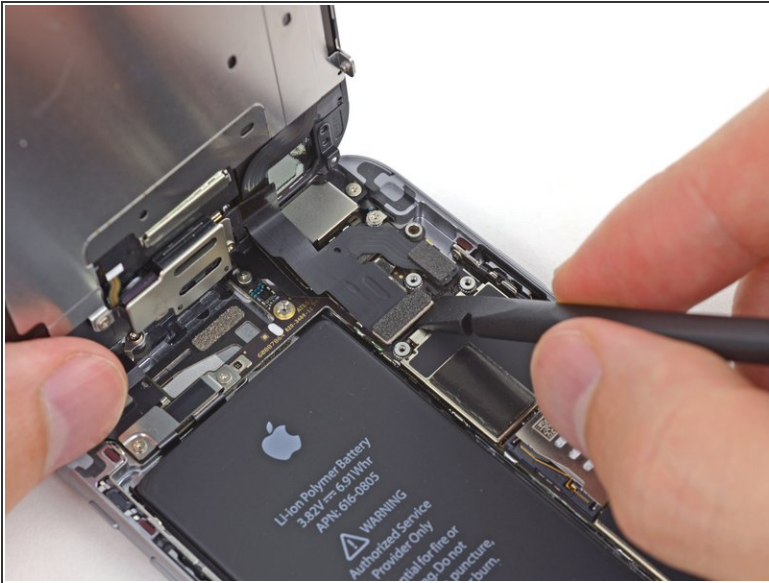
## Step 10



- Remove the front panel assembly cable bracket from the logic board.



## Step 11



⚠ In the next four steps, take care to pry up **only** on the cable connectors, and not on their sockets on the logic board.

- Use a spudger or a fingernail to disconnect the front-facing camera and sensor cable connector.



## Step 12



- Use a spudger or a fingernail to disconnect the home button cable connector.

## Step 13



-  Make sure the battery is disconnected before you disconnect or reconnect the cable in this step.
- Use a spudger or a fingernail to disconnect the display data cable connector.
-  When reassembling your phone, the display data cable may pop off its connector. This can result in white lines or a blank screen when powering your phone back on. If that happens, simply reconnect the cable and power cycle your phone. The best way to power cycle your phone is to [disconnect and reconnect the battery connector](#).

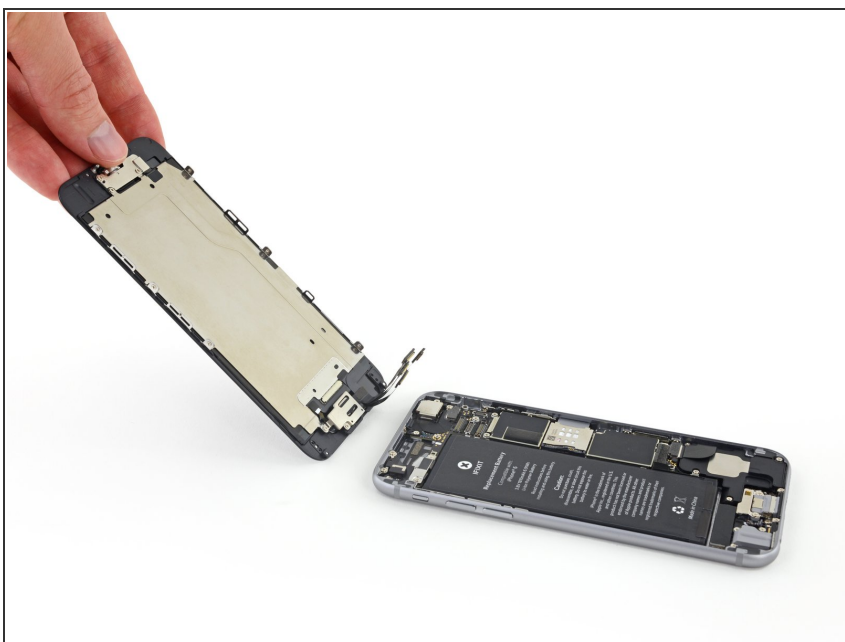


## Step 14



- Use the flat end of a spudger to disconnect the digitizer cable connector.
- ✦ When reconnecting the digitizer cable, **do not press the center of the connector**. Press one end of the connector, then press the opposite end. Pressing in the center of the connector can bend the component and cause digitizer damage.

## Step 15 — Separating front panel assembly and rear case



- Remove the front panel assembly from the rear case.

Compare your new replacement part to the original part—you may need to transfer remaining components or remove adhesive backings from the new part before installing.

**To reassemble your device, follow the above steps in reverse order.**

Take your e-waste to an [R2 or e-Stewards certified recycler](#).

Repair didn't go as planned? Try some [basic troubleshooting](#), or search our [Answers forum](#) for help.