



# iPhone 6 Home Button Cable Replacement

Replace the home button cable in an iPhone 6.

Written By: Sam Goldheart



## INTRODUCTION

Use this guide to replace the home button cable that runs behind the LCD shield plate in your iPhone 6.

**You can also use this guide to replace the following parts:**

- [Front Panel Assembly Cable Bracket](#)
- [LCD Shield Plate with Sticker and Home Cable](#)



### TOOLS:

- [P2 Pentalobe Screwdriver iPhone](#) (1)
- [iSlack](#) (1)
- [Phillips #000 Screwdriver](#) (1)
- [iFixit Opening Tools](#) (1)
- [Suction Handle](#) (1)
- [Tweezers](#) (1)
- [Spudger](#) (1)




### PARTS:

- [iPhone 6 Home Button Cable](#) (1)
- [iPhone 6 Front Panel Assembly Cable Bracket](#) (1)
- [iPhone 6 LCD Shield Plate with Sticker and Home Cable](#) (1)

## Step 1 — Pentalobe Screws



 Before disassembling your iPhone, discharge the battery below 25%. A charged lithium-ion battery can catch fire and/or explode if accidentally punctured.

- Power off your iPhone before beginning disassembly.
- Remove the two 3.6 mm-long Pentalobe screws next to the Lightning connector.

## Step 2 — iSclack Opening Procedure



- i** The next three steps demonstrate using the iSclack, a great tool for safely opening the iPhone 6 that we recommend for anyone doing more than one repair. **If you aren't using the iSclack, skip down three steps for an alternate method.**
- If the plastic depth gauge is attached at the center of the iSclack, remove it now—it's not needed for larger phones like the iPhone 6.
  - Close the handle on the iSclack, opening the suction-cup jaws.

## Step 3



- Place the bottom of your iPhone in between the suction cups.
  - Position the iSlack's upper suction cup against the display, just above (but not covering) the home button.
- Open the handles to close the jaws of the iSlack. Center the suction cups and press them firmly onto the top and bottom of the iPhone.
- ❗ If your display or back glass is badly cracked, [covering it with a layer of clear packing tape](#) may help the suction cups adhere. The iSlack also includes two pieces of tape for this purpose.

## Step 4



- Hold onto your iPhone securely and close the handle of the iSclack to separate the suction cups, pulling the front panel up from the rear case.
- The iSclack is designed to safely open your iPhone just enough to separate the pieces, but not enough to damage the display cables.
- Peel the two suction cups off your iPhone.
- **Skip the next three steps and continue on to Step 8.**

## Step 5 — Manual Opening Procedure



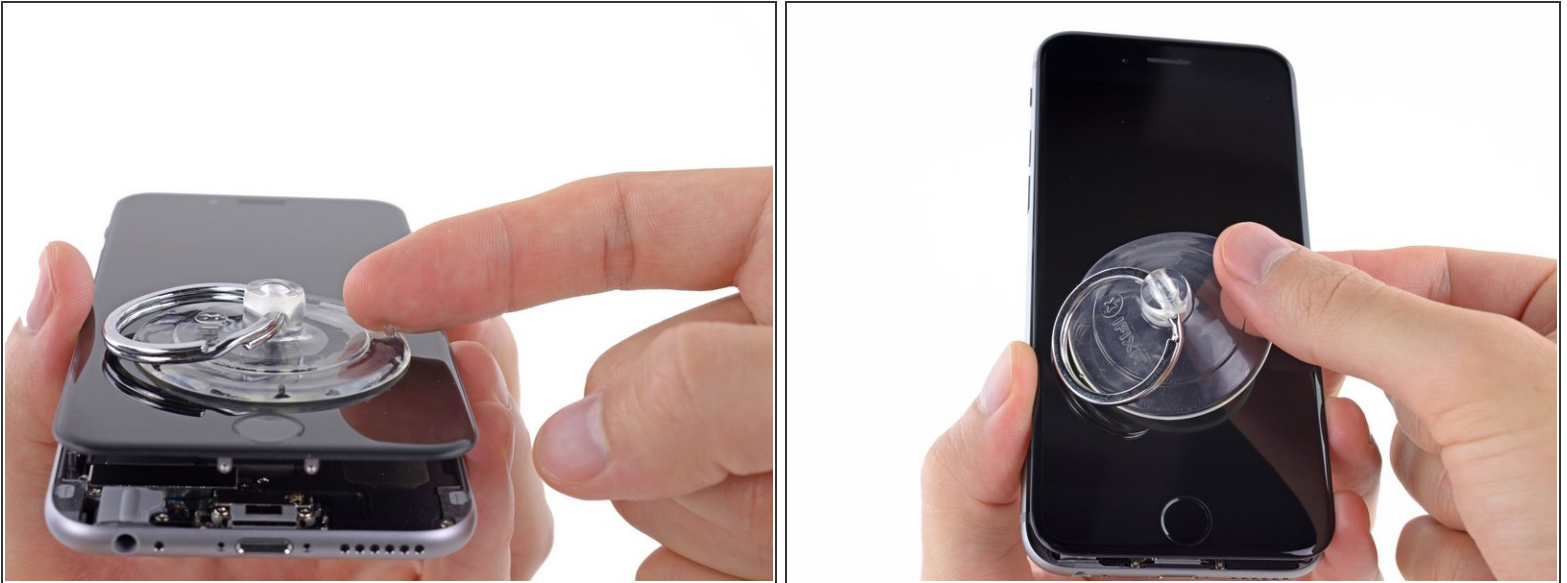
- If you don't have an iSlack, use a single suction cup to lift the front panel:
  - Press a suction cup onto the screen, just above the home button.
- ⓘ Be sure the cup is pressed securely onto the screen to get a tight seal.
- ⓘ If your display is badly cracked, [covering it with a layer of clear packing tape](#) may allow the suction cup to adhere. Alternatively, very strong tape may be used instead of the suction cup. If all else fails, you can superglue the suction cup to the broken screen.

## Step 6



- While holding the iPhone down with one hand, pull up on the suction cup to slightly separate the front panel assembly from the rear case.
- ⚠ Take your time and apply firm, constant force. The display assembly is a much tighter fit than most devices.
- Using a plastic opening tool, begin to gently pry the rear case down, away from the display assembly, while continuing to pull up with the suction cup.
- ⓘ There are several clips holding the front panel assembly to the rear case, so you may need to use a combination of the suction cup and plastic opening tool to free the front panel assembly.

## Step 7



- Pull the plastic nub to release the vacuum seal on the suction cup.
- Remove the suction cup from the display assembly.

## Step 8 — Opening up the phone



- Open the iPhone by swinging the home button end of the front panel assembly away from the rear case, using the top of the phone as a hinge.
- ⓘ Several clips along the top edge of the front panel form a partial hinge.
- ☑ During reassembly, align the clips just below the top edge of the rear case. Then, slide the front panel upward until its top edge is flush with that of the rear case.

## Step 9



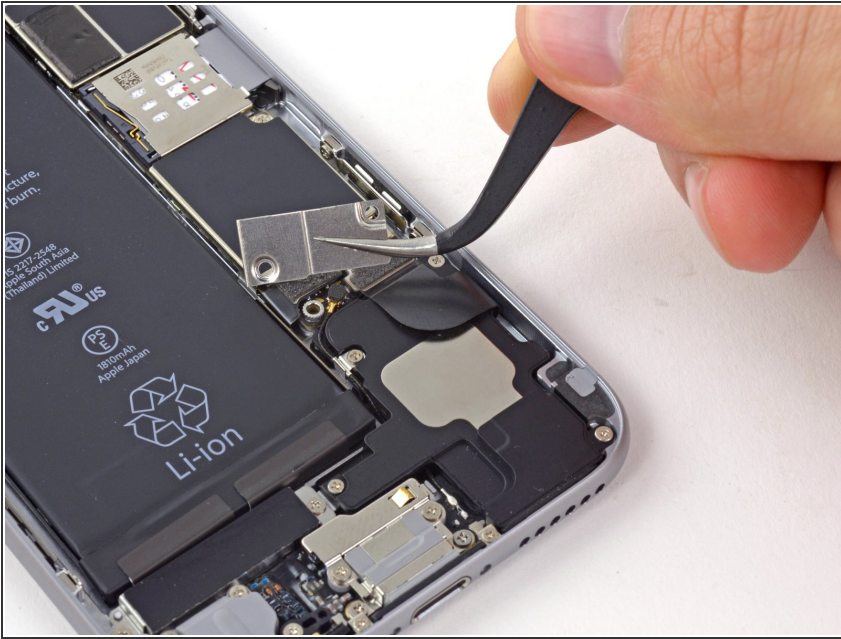
- Open the display to about a 90° angle, and lean it against something to keep it propped up while you're working on the phone.
  - ❗ In a pinch, an unopened canned beverage works well for this.
- Add a rubber band to keep the display securely in place while you work. This prevents undue strain on the display cables.

## Step 10 — Removing the battery connector bracket screws



- Remove the following Phillips screws from the battery connector bracket:
  - One 2.2 mm screw
  - One 3.2 mm screw
- ❗ During your repair, [keep track of each screw](#) and make sure it goes back exactly where it came from to avoid damaging your phone.

## Step 11



- Remove the metal battery connector bracket from the iPhone.

## Step 12 — Disconnecting the battery connector



- Use a plastic opening tool to gently pry the battery connector up from its socket on the logic board.
- ⚠ Take care to only pry up on the battery connector, and not the socket on the logic board. If you pry up on the logic board socket, you may break the connector entirely.

## Step 13 — Removing the front panel assembly cable bracket screws

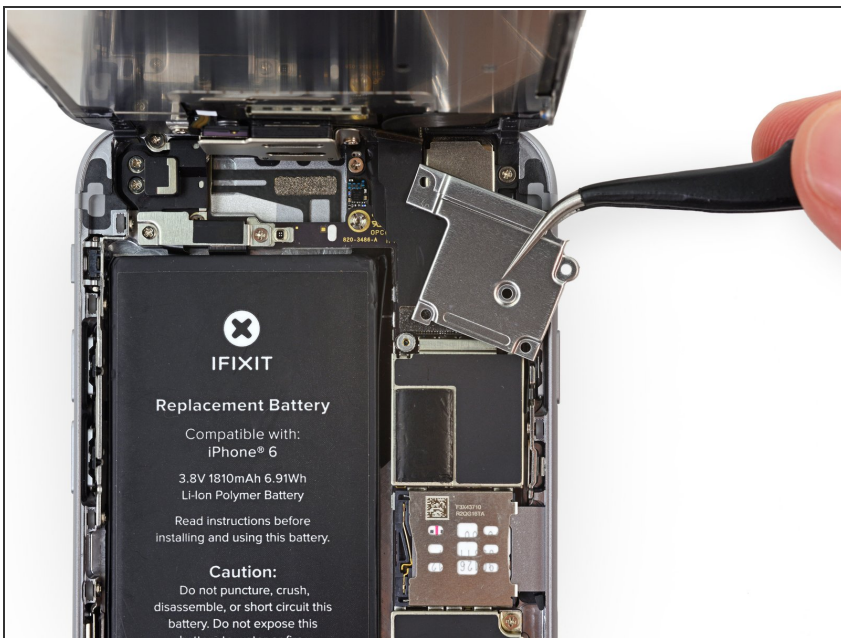


- Remove the following five Phillips screws securing the front panel assembly cable bracket:

- Three 1.2 mm screws
- One 1.7 mm screw
- One 3.1 mm screw

⚠ Incorrect placement of these screws during reassembly will cause permanent damage to your iPhone's logic board.

## Step 14



- Remove the front panel assembly cable bracket from the logic board.

## Step 15



⚠ In the next four steps, take care to pry up **only** on the cable connectors, and not on their sockets on the logic board.

- Use a spudger or a fingernail to disconnect the front-facing camera and sensor cable connector.

## Step 16



- Use a spudger or a fingernail to disconnect the home button cable connector.

## Step 17



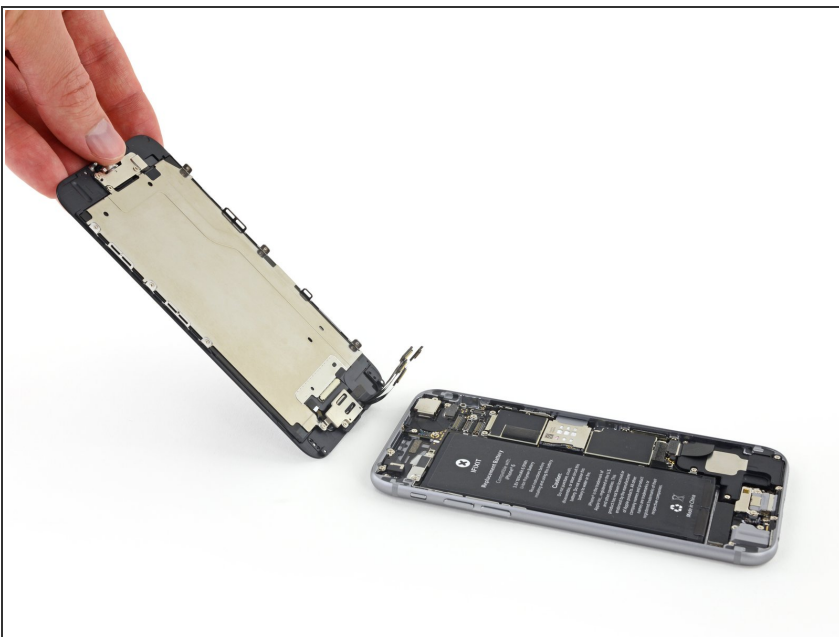
- ⚠ Make sure the battery is disconnected before you disconnect or reconnect the cable in this step.
- Use a spudger or a fingernail to disconnect the display data cable connector.
- 🔧 When reassembling your phone, the display data cable may pop off its connector. This can result in white lines or a blank screen when powering your phone back on. If that happens, simply reconnect the cable and power cycle your phone. The best way to power cycle your phone is to [disconnect and reconnect the battery connector](#).

## Step 18



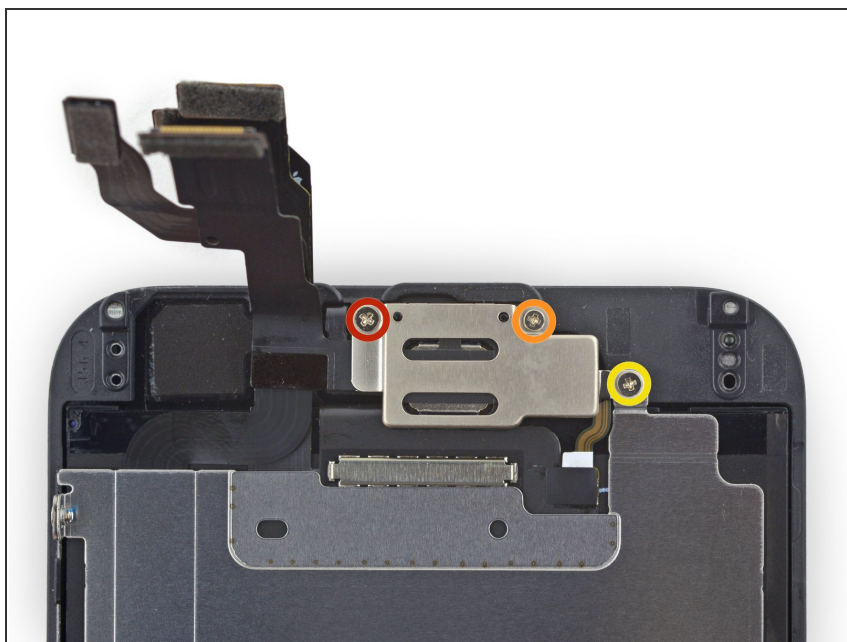
- Use the flat end of a spudger to disconnect the digitizer cable connector.
- ✦ When reconnecting the digitizer cable, **do not press the center of the connector**. Press one end of the connector, then press the opposite end. Pressing in the center of the connector can bend the component and cause digitizer damage.

## Step 19 — Separating front panel assembly and rear case



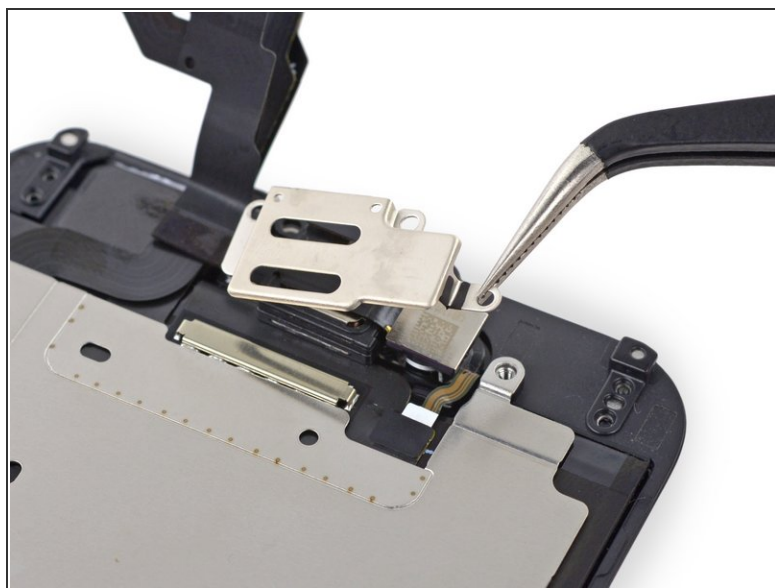
- Remove the front panel assembly from the rear case.

## Step 20 — LCD Shield Plate



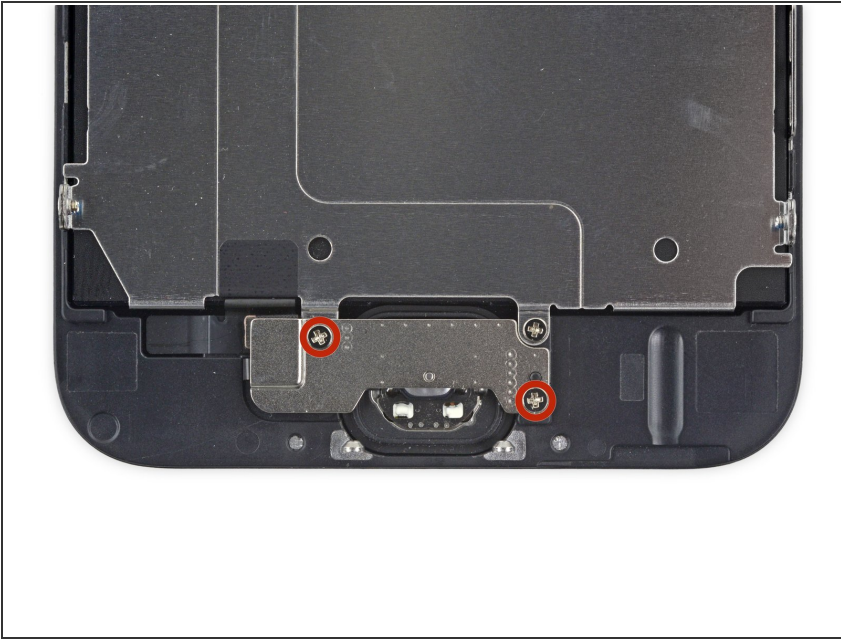
- Remove the following Phillips screws from the earpiece speaker/front-facing camera bracket:
  - One 2.3 mm screw
  - One 3.0 mm screw
  - One 2.2 mm screw

## Step 21



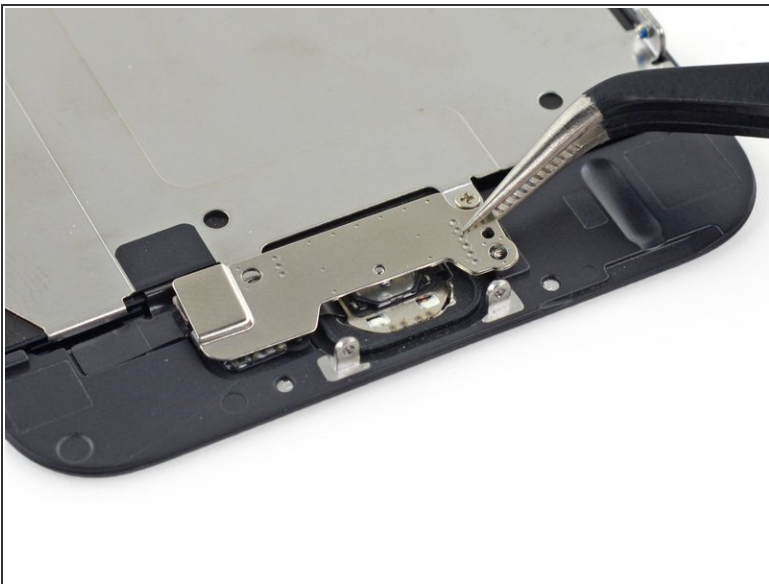
- Remove the earpiece speaker/front-facing camera bracket from the front panel.

## Step 22



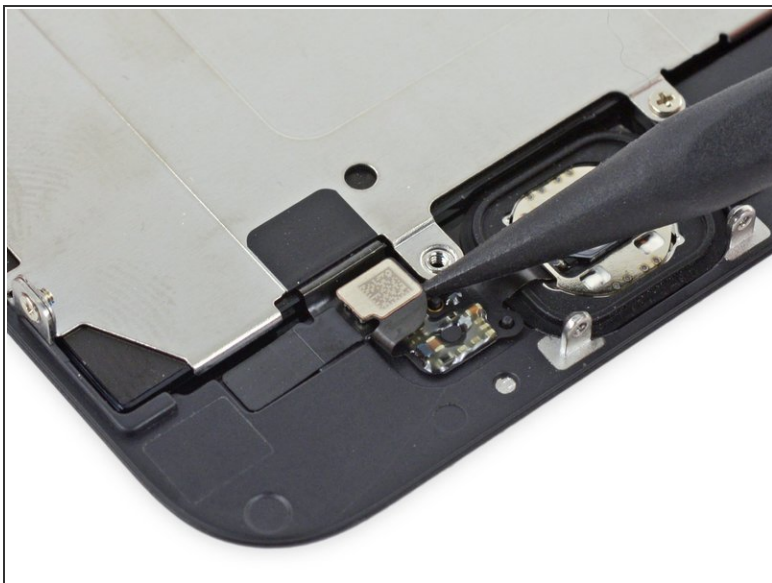
- Remove the two 1.9 mm Phillips #00 screws securing the home button bracket.

## Step 23



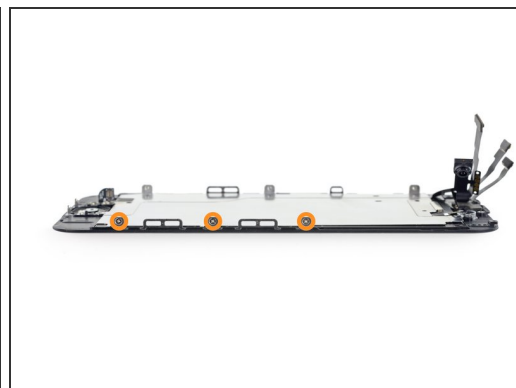
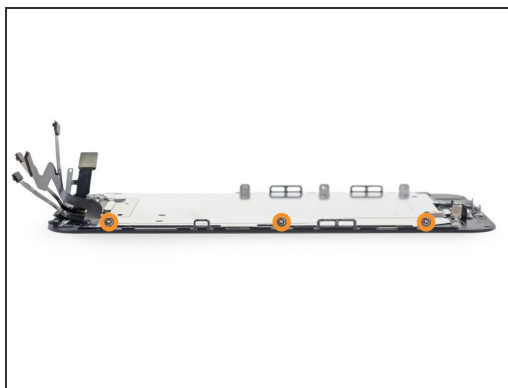
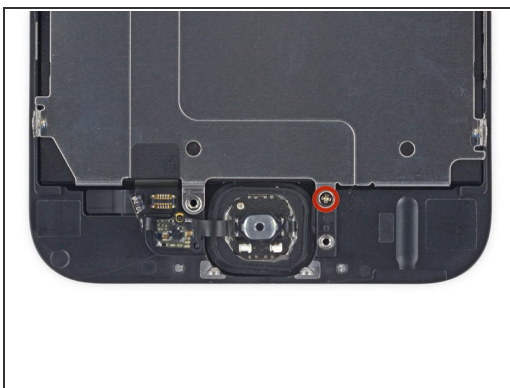
- Remove the home button bracket from the front panel.

## Step 24



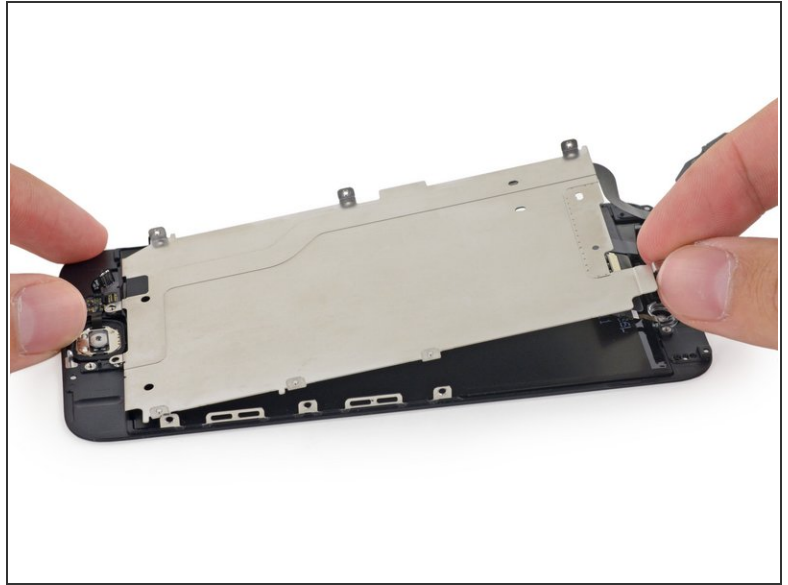
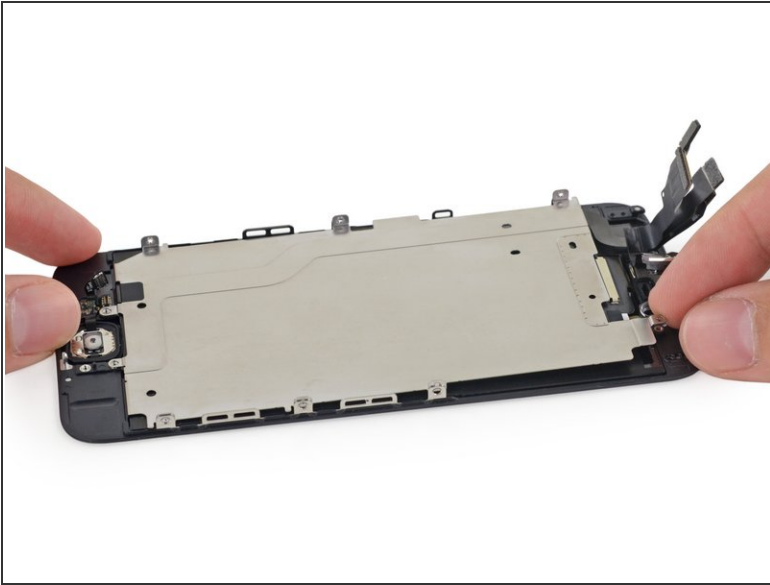
- Use the point of a spudger to disconnect the home button cable connector by pushing it up and away from the home button.

## Step 25



- Remove the following Phillips #00 screws securing the LCD shield plate to the front panel:
  - One 1.7 mm screw
  - Six 1.6 mm screws (three on each side)

## Step 26



- Lift the front-facing camera end of the LCD shield plate up slightly.

 **Do not attempt to remove the shield plate entirely**, it is still attached to the front panel via home button cable.

## Step 27



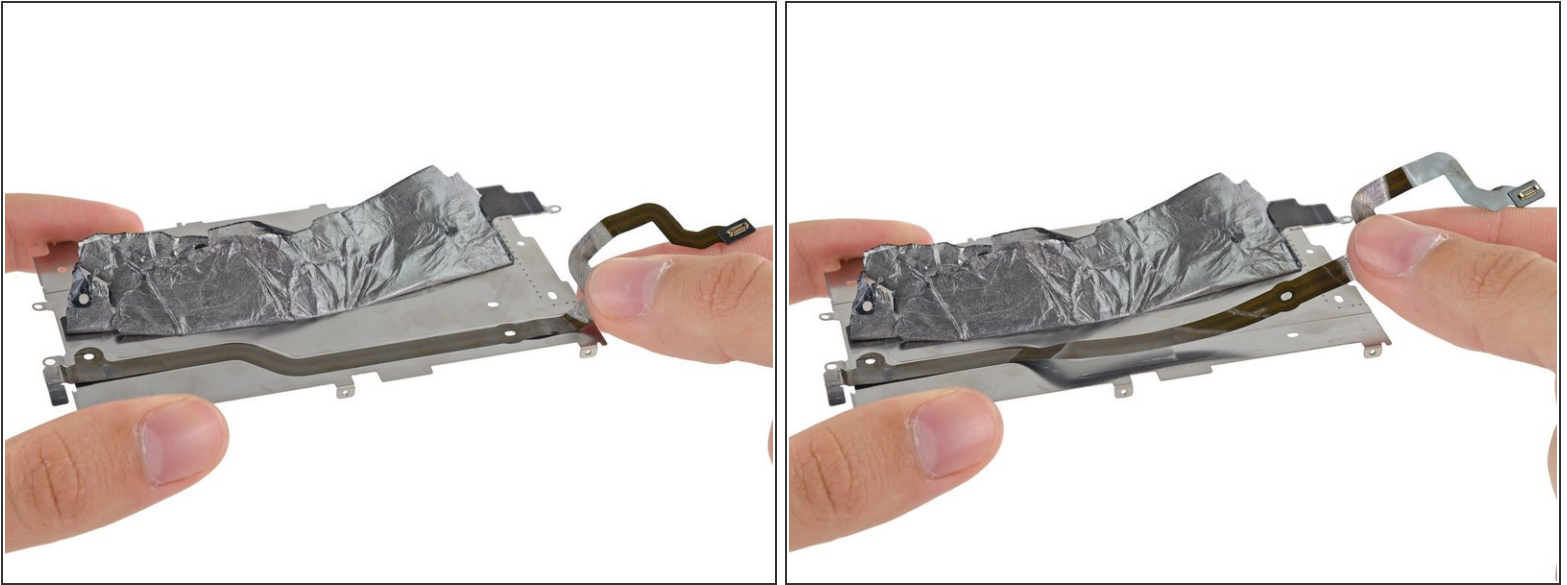
- Slide the point of a spudger behind the shield plate to gently lift the home button cable up off of the front panel.
  - ⚠ If the cable doesn't peel away easily, use a little heat from an iOpener or hair dryer to soften the adhesive underneath.
- Remove the LCD shield plate.
- During reassembly, make sure to seat the home button connector on the shield behind the small indentation in the plastic.

## Step 28



- Peel the black backing tape away from the home button cable.
  - ⓘ You may need tweezers to start peeling, however the tape is brittle and it may be hard to complete the job with tweezers alone.

## Step 29



- Carefully peel the home button cable up off of the adhesive holding it to the LCD shield plate.

To reassemble your device, follow these instructions in reverse order.