



iPhone 6s Camera Ring Replacement

Replace a broken camera lens and camera ring

Written By: jeremyfitz



INTRODUCTION

A complicated fix for a tiny problem. Learn how to remove the screen and camera in order to access the inside of the ring to pop it out, then insert the new lense ring.

TOOLS:

- [iOpener](#) (1)
- [P2 Pentalobe Screwdriver iPhone](#) (1)
- [Suction Handle](#) (1)
- [Spudger](#) (1)
- [Tweezers](#) (1)
- [Phillips #000 Screwdriver](#) (1)
- [iFixit Precision Bit Driver](#) (1)

PARTS:

- [iPhone 6s Rear Camera](#) (1)
- [iPhone 6s Rear Camera Bracket](#) (1)

Step 1 — Pentalobe Screws



⚠ Before disassembling your iPhone, discharge the battery below 25%. A charged lithium-ion battery can catch fire and/or explode if accidentally punctured.

- Power off your iPhone before beginning disassembly.
- Remove the two 3.4 mm P2 Pentalobe screws on the bottom edge of the iPhone, next to the Lightning connector.

Step 2 — Opening Procedure



- Optionally, apply mild heat to the lower edge of the iPhone using an [iOpener](#) or hair dryer for about a minute.
- ⓘ Heat softens the adhesive securing the display, making it easier to open.

Step 3



- ⓘ Opening the display on the 6s separates a thin strip of adhesive around the perimeter of the display. If you prefer to replace the adhesive, have a set of new adhesive strips ready before you continue. It's possible to complete the repair without replacing the adhesive, and you probably won't notice any difference in functionality.
- Apply a suction cup to the lower left corner of the display assembly.
 - Take care **not** to place the suction cup over the home button.
- ⓘ If your display is badly cracked, [covering it with a layer of clear packing tape](#) may allow the suction cup to adhere. Alternatively, very strong tape may be used instead of the suction cup. If all else fails, you can superglue the suction cup to the broken screen.

Step 4



- Pull up on the suction cup with firm, constant pressure to create a slight gap between the front panel and rear case.
 - ⓘ Take your time and apply firm, constant force. The display assembly is a much tighter fit than most devices and is held down with adhesive.
- ⚠ Pulling too hard may damage the display assembly. Apply just enough pressure to create a small gap between the display assembly and the rear case.
- ⓘ If you have any trouble, heat the front of the iPhone using an iOpener, hair dryer, or heat gun until it's slightly too hot to touch. This will help soften the adhesive securing the edges of the display.

Step 5



- ⓘ There is a notch on the underside of the display, just above the headphone jack. This is the safest place to begin prying the phone open.
- Place the flat edge of a spudger into the gap between the screen and rear case, directly above the headphone jack.

Step 6



- Twist the spudger to widen the gap between the front panel assembly and the rest of the phone.

Step 7



- Insert the flat end of the spudger on the left side of the phone, between the display assembly and rear case.
- Slide the spudger up the side of the phone to separate the adhesive and pop the clips free.

Step 8



- Remove the spudger and reinsert it on the bottom edge, where you pried the phone open.
- Slide the spudger to the right, along the bottom edge of the phone.

Step 9



- Slide the spudger up the right side to continue separating the adhesive and popping the display clips free from the iPhone.

Step 10



- Use the suction cup to open the display, breaking the last of the adhesive.

⚠ Don't open the display more than 90°, as it is still connected at the top by three cables that may break if stretched.

Step 11



- Pull up on the nub on the top side of the suction cup to remove it from the front panel.

Step 12



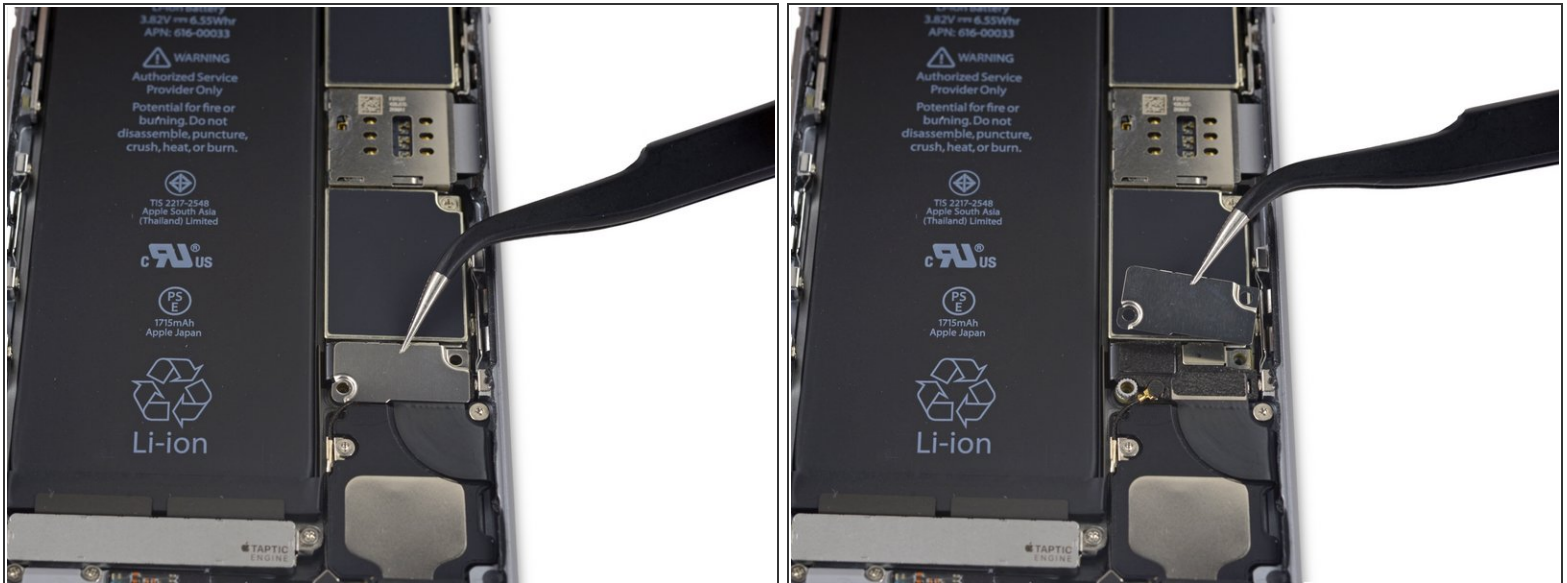
- Gently grasp the display assembly and lift it up to open the phone, using the clips at the top of the front panel as a hinge.
 - Open the display to about a 90° angle, and lean it against something to keep it propped up while you're working on the phone.
 - Add a rubber band to keep the display securely in place while you work. This prevents undue strain on the display cables.
- i** In a pinch, you can use an unopened canned beverage to hold the display.

Step 13 — Battery Connector



- Remove two Phillips screws securing the battery connector bracket, of the following lengths:
 - One 2.9 mm screw
 - One 2.2 mm screw
- i** Throughout this repair, [keep track of each screw](#) and make sure it goes back exactly where it came from to avoid damaging your iPhone.

Step 14



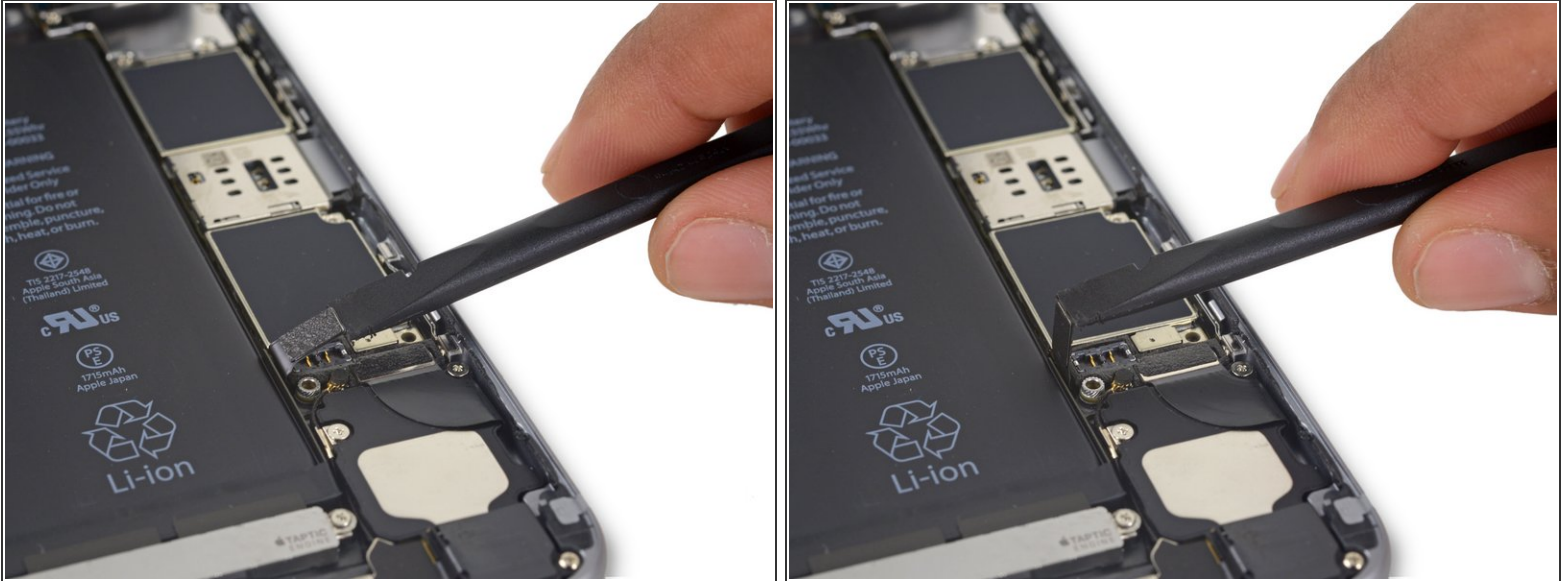
- Remove the battery connector bracket from the iPhone.

Step 15



- Use the point of a spudger to disconnect the battery connector by prying it straight up from the logic board.

Step 16



- Push the battery connector away from the logic board until it stays separated from its socket, so as to avoid any accidental connection to the battery while you work.

Step 17 — Front Panel Assembly



- Remove the following four Phillips screws securing the display cable bracket:
 - Three 1.2 mm screws
 - One 2.8 mm screw

Step 18



- Remove the display cable bracket.

Step 19




- Use a spudger or a clean fingernail to disconnect the front camera flex cable by prying it straight up from its socket on the logic board.

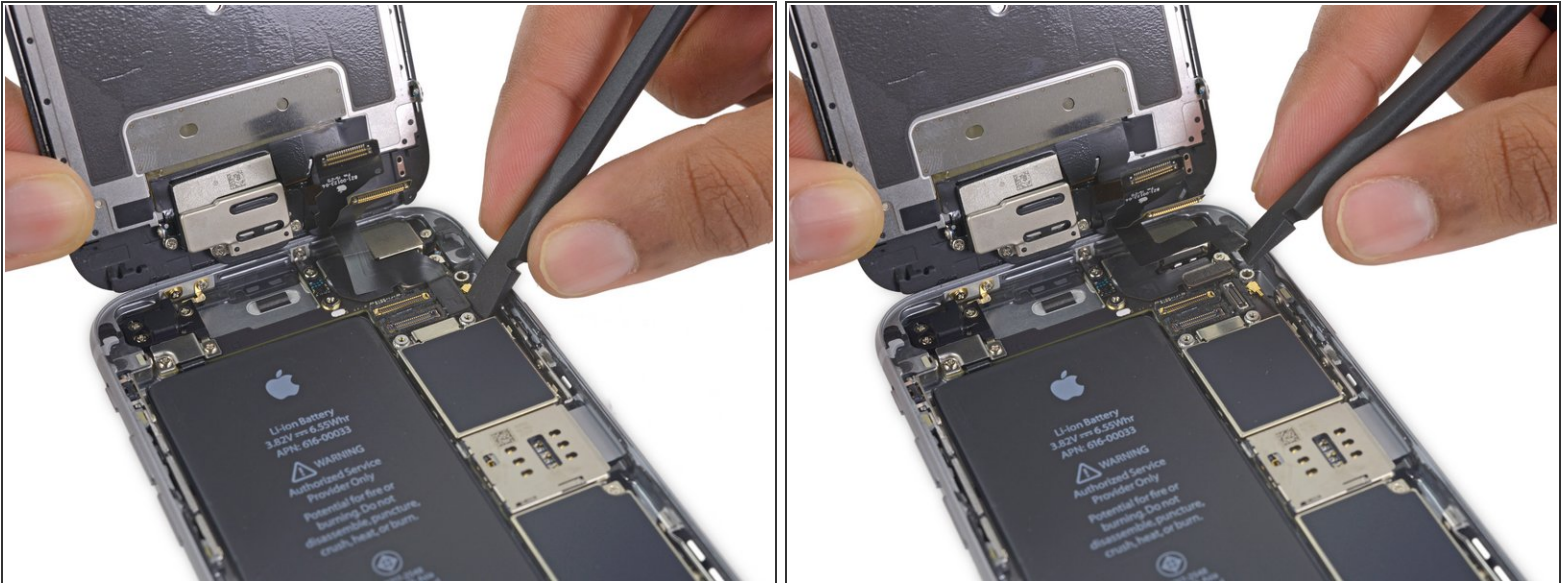
Step 20




- Disconnect the digitizer cable by prying it straight up from its socket on the logic board.

 When reconnecting the digitizer cable, **do not press the center of the connector**. Press one end of the connector, then press the opposite end. Pressing in the center of the connector can bend the component and cause digitizer damage.

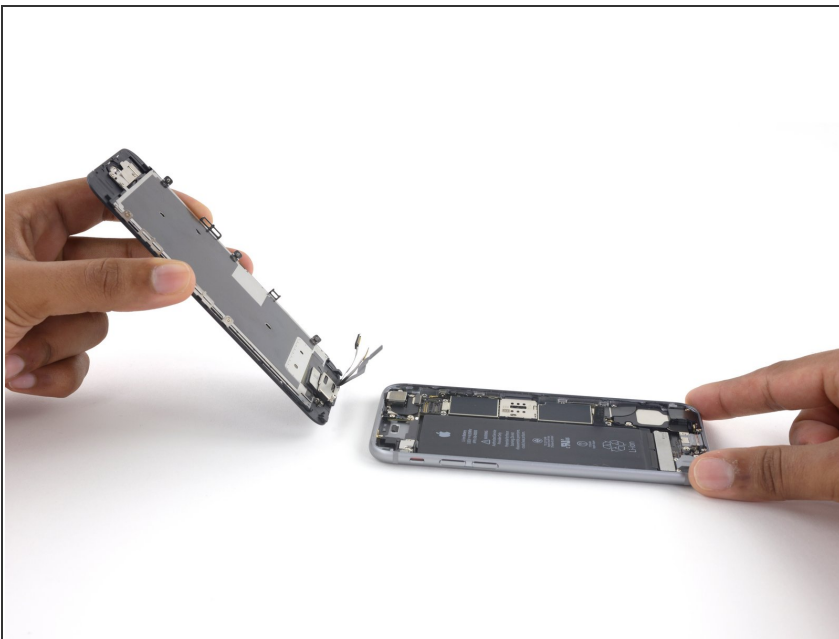
Step 21




 Make sure the battery is disconnected before you disconnect or reconnect the cable in this step.

- Disconnect the display cable by prying it straight up from its socket on the logic board.

Step 22



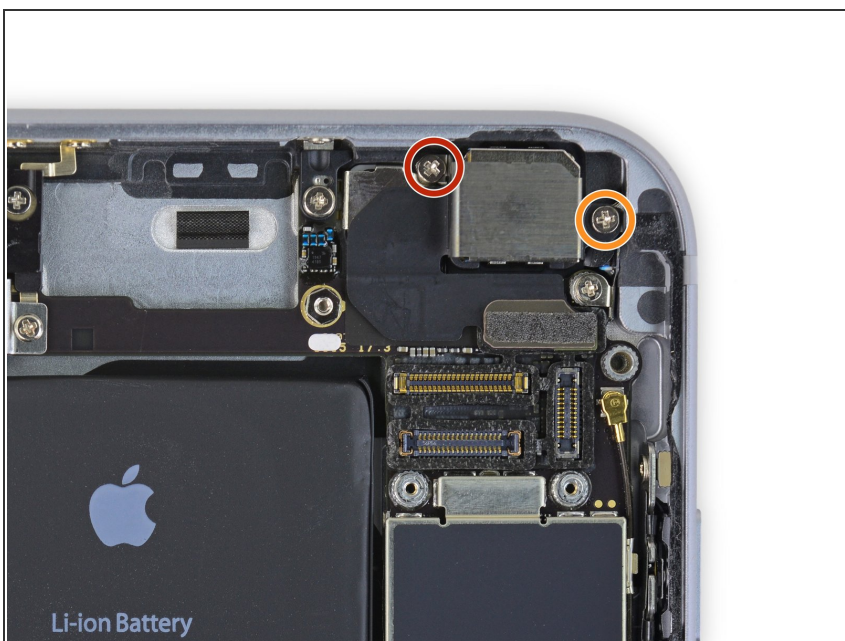
- Remove the display assembly.
-  During reassembly, pause here if you wish to [replace the adhesive around the edges of the display](#).

Step 23 — Rear Camera



- Use the flat end of a spudger to disconnect the rear camera from its socket on the logic board.

Step 24



- Remove the following two Phillips screws over the rear camera bracket:
 - One 1.6 mm screw
 - One 2.0 mm screw

Step 25



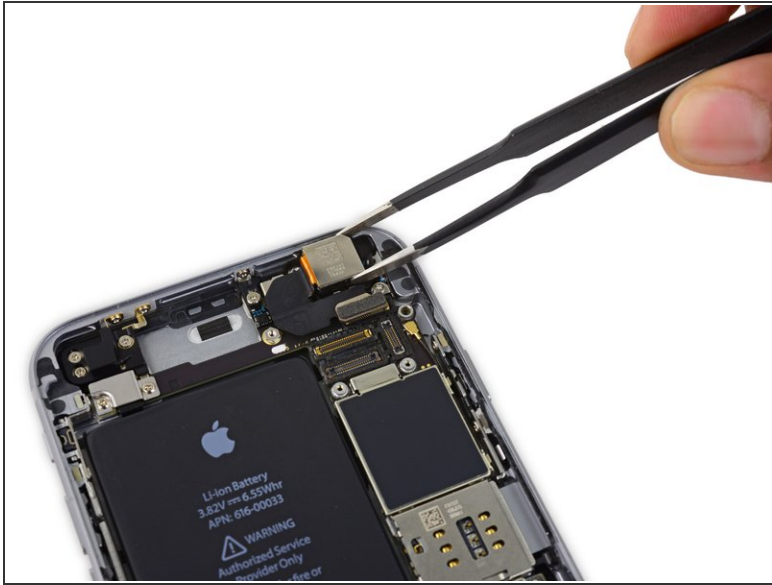
- Remove the camera bracket.

Step 26



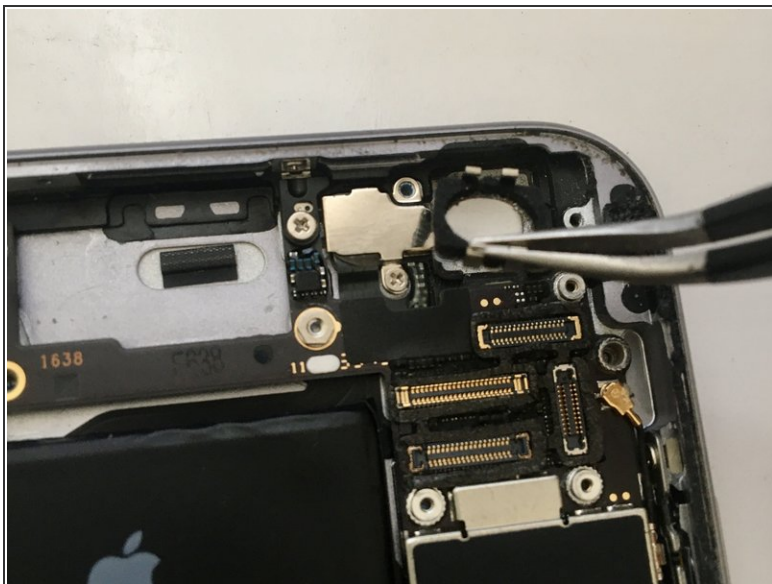
- Insert a spudger to the side of the camera, between the rear case and the camera module.
- Gently pry up on the camera to nudge it out from its housing.

Step 27



- Remove the camera.

Step 28 — Camera Ring



- Remove the glass by pushing out from the inside of the frame

Step 29



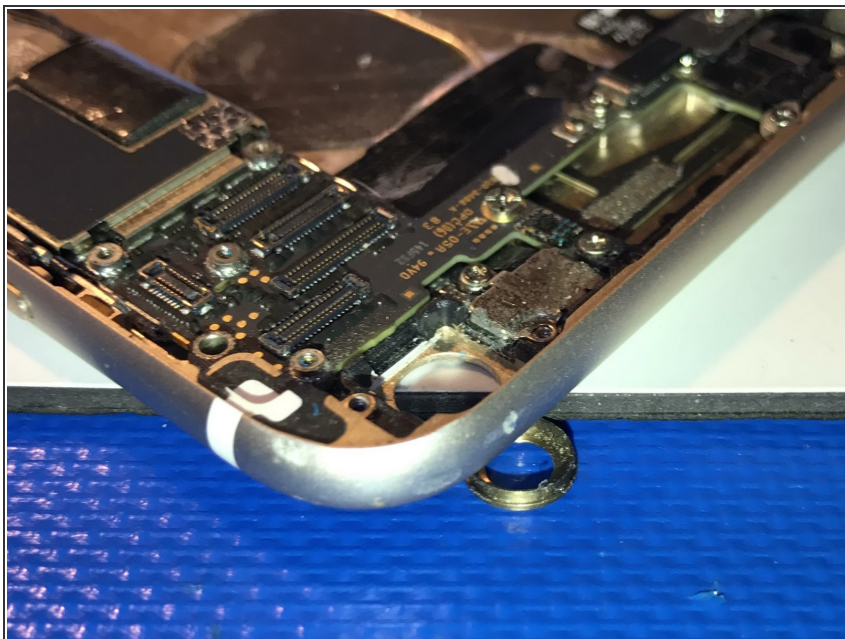
- Butt the lens rim up against a raised surface with the rest of the phone on the surface and the ring over air.

Step 30



- Use a driver without a bit to fit on the ring from the inside. *It shouldn't rest on the frame around the ring at all.* Gently tap down on the ring until it pops out while firmly holding the frame down.

Step 31



- Once ring is out of the frame, there should be no bending at all on the frame.

Step 32



- Insert new ring with tiny dots of super glue. *Don't use too much glue and get it on the frame.*

To reassemble your device, follow these instructions in reverse order.