



iPhone 6s Plus Battery Replacement

Replace the battery in an iPhone 6s Plus.

Written By: Evan Noronha



INTRODUCTION

Use this guide to bring life back to your iPhone 6s Plus with a new battery. If your battery is swollen, [take appropriate precautions](#).

This guide instructs you to detach the front panel assembly; this is intended to prevent damage to the display cables. If you feel comfortable supporting the display carefully while peeling the battery out of the iPhone, you can skip the display removal and go directly to the battery removal steps.

For optimal performance, after completing this guide, [calibrate](#) your newly installed battery: Charge it to 100% and keep charging it for at least two more hours. Then use your iPhone until it shuts off due to low battery. Finally, charge it uninterrupted to 100%.

You can also use this guide to replace the [battery connector bracket](#).

[video: <https://www.youtube.com/watch?v=4Kskal4s1sU>]



TOOLS:

- [P2 Pentalobe Screwdriver iPhone](#) (1)
- [Suction Handle](#) (1)
- [Spudger](#) (1)
- [Tweezers](#) (1)
- [Phillips #000 Screwdriver](#) (1)
- [Plastic Cards](#) (1)
- [iFixit Opening Tools](#) (1)
- [iOpener](#) (1)




PARTS:

- [iPhone 6s Plus Replacement Battery](#) (1)
- [iPhone 6 Plus/6s Plus/7 Plus Battery Adhesive Strips](#) (1)
- [iPhone 6s Plus Battery Connector Bracket](#) (1)
- [iPhone 6s Plus Display Assembly Adhesive](#) (1)

Step 1 — Pentalobe Screws



 Before disassembling your iPhone, discharge the battery below 25%. A charged lithium-ion battery can catch fire and/or explode if accidentally punctured.

- Power off your iPhone before beginning disassembly.
- Remove the two 3.4 mm Pentalobe screws on either side of the Lightning port.

Step 2 — Opening Procedure



- Optionally, apply mild heat to the lower edge of the iPhone using an [iOpener](#) or hair dryer for about a minute.
- ⓘ Heat softens the adhesive securing the display, making it easier to open.

Step 3



- ❗ Opening the display on the 6s Plus separates a thin strip of adhesive around the perimeter of the display. If you prefer to replace the adhesive, have a set of new adhesive strips ready before you continue. It's possible to complete the repair without replacing the adhesive, and you probably won't notice any difference in functionality.
- Apply a suction cup to the lower left corner of the display assembly.

Step 4



- Pull up on the suction cup with firm, constant pressure to create a slight gap between the front panel and rear case.

⚠ Pulling too hard may damage the display assembly. Apply just enough pressure to create a small gap between the display assembly and the rear case.

Step 5



- The safest place to pry from is the notch in the front panel above the headphone jack.
- While still maintaining pressure on the suction cup, insert the flat tip of a spudger into the gap, directly above the headphone jack.

Step 6



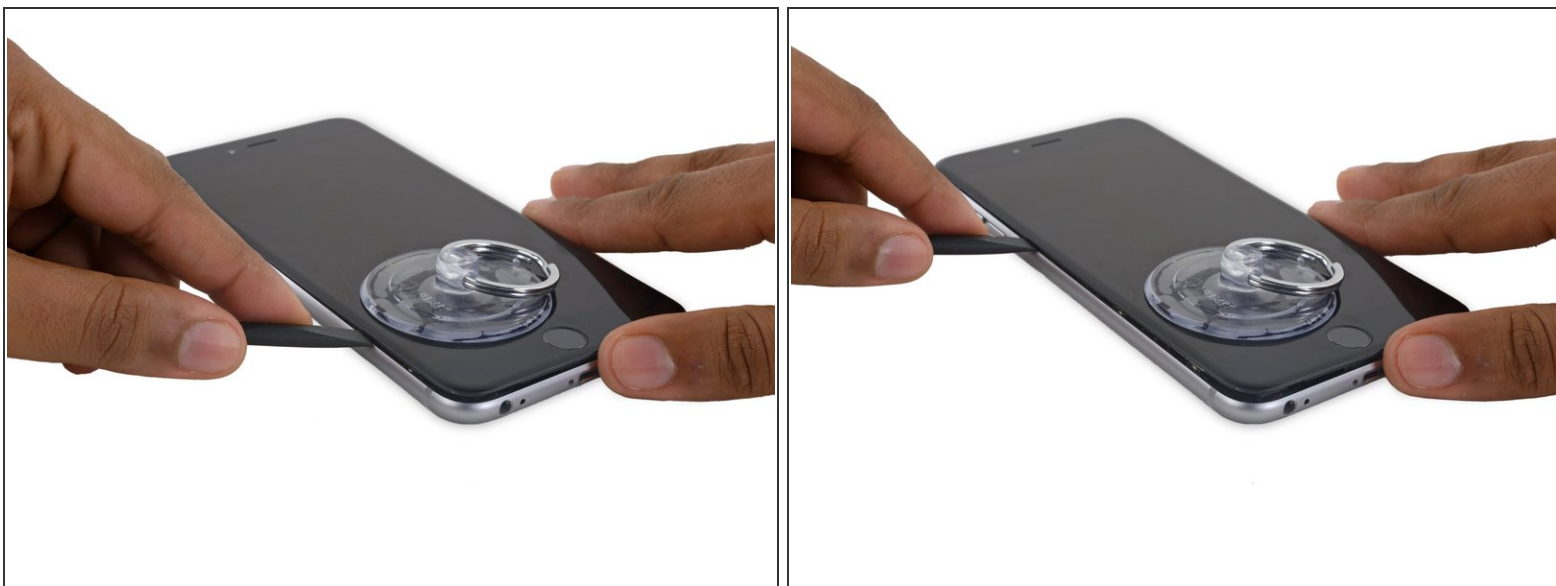
- Twist the spudger to widen the gap between the front panel and the rear case.

Step 7



- While firmly pulling up on the suction cup, slide the edge of the spudger under the bottom left corner of the display.

Step 8



- Slide the tip of the spudger up the left side of the phone, between the front panel and the rear case.

Step 9



- Insert the flat tip of the spudger under the right edge of the display.
- Slide the spudger up the right side.

Step 10



- Use a plastic opening tool to hold down the rear case while pulling up the suction cup to open the phone.

⚠ Do **not** remove the display completely, or you will damage the data cables connecting the display near the top edge of the iPhone.

Step 11



- Pull up on the small nub on the suction cup to remove it from the display.

Step 12



- Gently grasp the display assembly and lift it up to open the phone, using the clips at the top of the front panel as a hinge.
 - Open the display to about a 90° angle, and lean it against something to keep it propped up while you're working on the phone.
- ⚠ Don't open the display more than 90°—it is still connected to the top of the phone by the display, digitizer, and front camera cables which can tear easily.
- Add a rubber band to keep the display securely in place while you work. This prevents undue strain on the display cables.
- ⓘ In a pinch, you can use an unopened canned beverage to support the display.

Step 13 — Battery Connector



- Remove two Phillips screws securing the battery connector bracket to the logic board, of the following lengths:

- One 2.9 mm screw
- One 2.3 mm screw

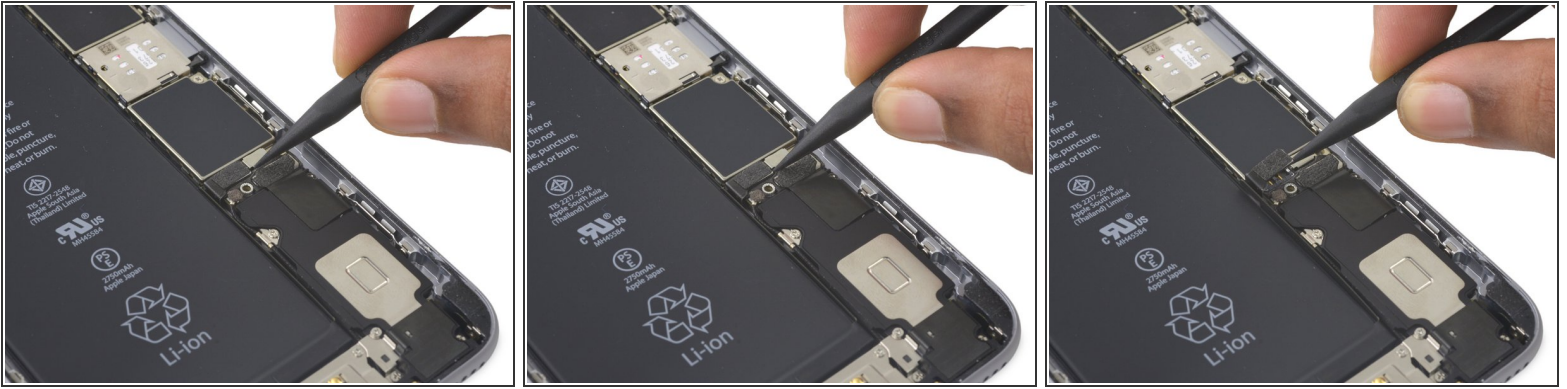
✦ Throughout this guide, [keep careful track of your screws](#) so that each one goes back where it came from during reassembly. Installing a screw in the wrong place can cause permanent damage.

Step 14



- Remove the battery connector bracket.

Step 15



- Use a spudger or a clean fingernail to disconnect the battery connector by prying it straight up off the logic board.

Step 16



- Bend the connector back to ensure it doesn't make contact and power the iPhone on while you're working on it.

Step 17 — Display Assembly



- Remove the following Phillips screws:
 - Three 1.3 mm screws
 - One 1.6 mm screw
 - One 3.0 mm screw
- ☑ During reassembly, it's critical to place this 3.0 mm screw in the top-right corner of the bracket. Placing it anywhere else may damage the logic board.

Step 18



- Remove the display cable bracket.

Step 19



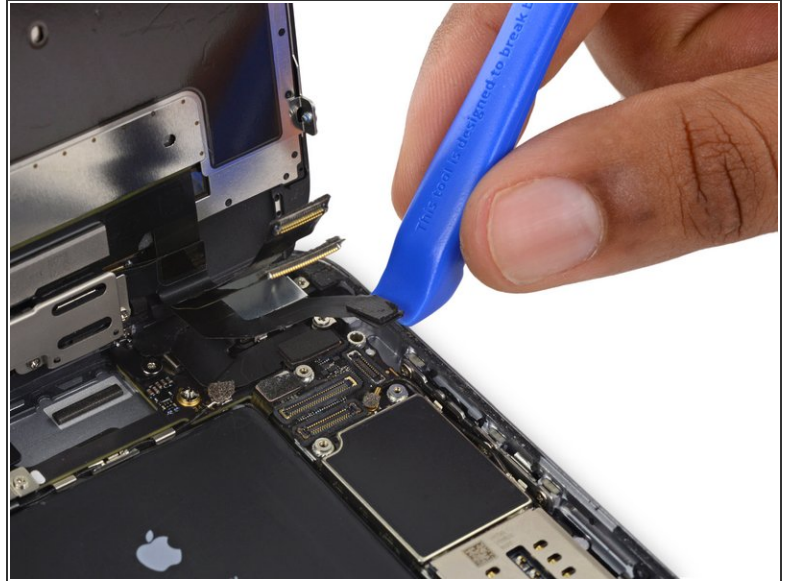
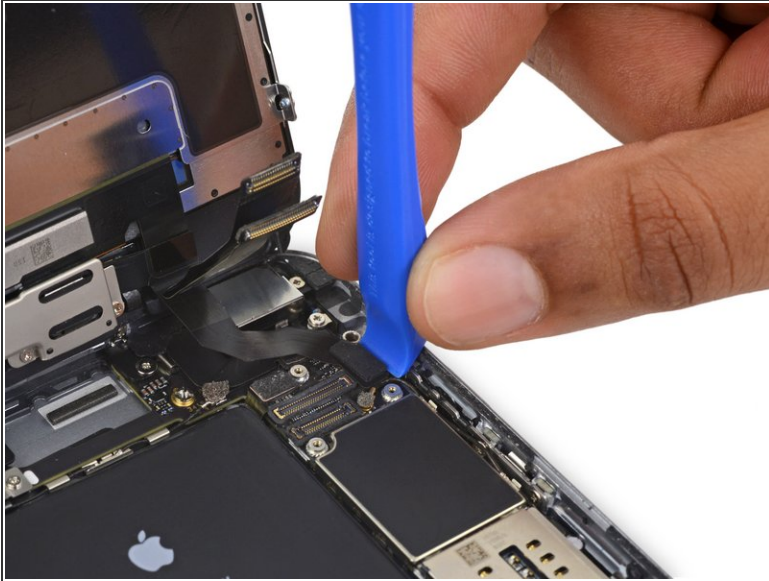
- ⚠ Be careful to only pry up on the connector itself and not the socket on the logic board.
- Use a plastic opening tool to disconnect the front-facing camera and sensor cable connector.


Step 20



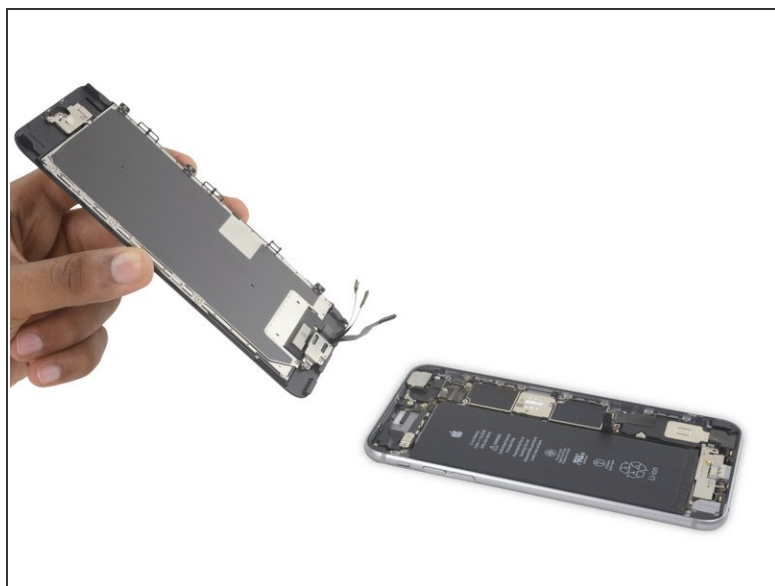
- Use a plastic opening tool to disconnect the digitizer cable by prying it straight up from its socket on the logic board.
- ✦ When reconnecting the digitizer cable, **do not press the center of the connector**. Press one end of the connector, then press the opposite end. Pressing in the center of the connector can bend the component and cause digitizer damage.

Step 21



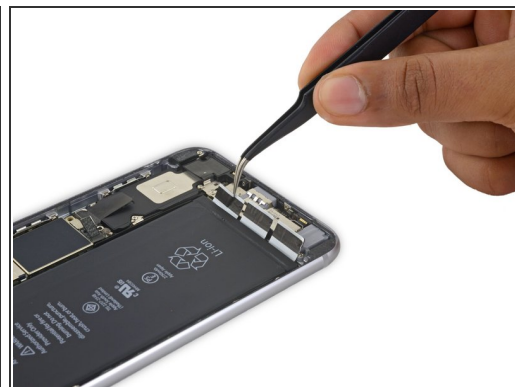
-  Make sure the battery is disconnected before you disconnect or reconnect the cable in this step.
- Disconnect the home button/fingerprint sensor cable by prying it straight up from its socket on the logic board.

Step 22



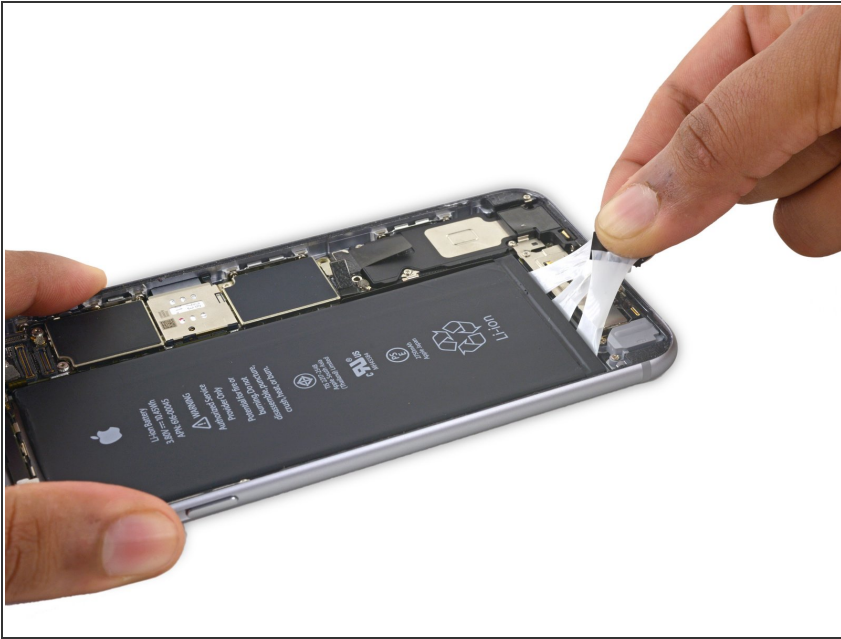
- Remove the display assembly.
- ✦ During reassembly, pause here if you wish to [replace the adhesive around the edges of the display](#).

Step 23 — Battery



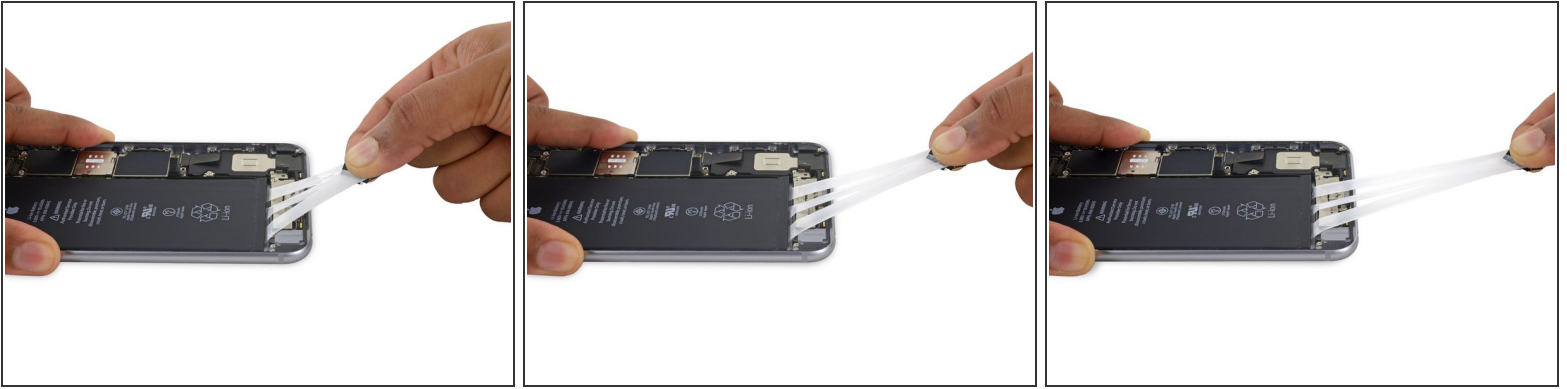
- Peel back the tips of the three battery adhesive strips along the bottom edge of the battery.

Step 24



- Gather the ends of all three adhesive strips in your hand.
- ⚠ Try to keep the strips flat and unwrinkled during this procedure; wrinkled strips will stick together and break instead of pulling out cleanly.

Step 25



- Gently pull the battery adhesive tabs away from the battery, toward the bottom of the iPhone.

⚠ To avoid tearing the adhesive strip, be careful not to pull against the battery or lower components.

- Pull steadily, maintaining constant tension on the strips as they slip out from between the battery and the rear case. For best results, pull the strips at a 60° angle or less.

ⓘ The strips will stretch to *many* times their original length. Continue pulling and re-grab the strips near the battery if necessary.

⚠ Hold down the battery with one hand as you pull, or the elastic strips may fling the battery from the phone once they're separated from the rear case.

Step 26



- i** If you successfully removed all three adhesive strips, move on to the next step. Otherwise, you will need to pry the battery from the rear case.
- [Prepare an iOpener](#) and apply it to the back of the rear case, directly over the battery. Alternatively, you can apply heat using a heat gun or hair dryer.
 - After about a minute, flip the phone over and use a plastic card to break up any remaining adhesive behind the battery.
- !** **Do not** insert your card in the area between the volume down (-) button and the top edge of the battery, or you may damage the volume control cable lying underneath.
- !** **Do not** pry against the logic board or you may damage the phone.
- !** Keep the card as flat as possible to avoid bending the battery, which may damage it and cause it to release dangerous chemicals or catch fire. Do not use any sharp tools to pry at the battery.
- i** Alternatively, a piece of dental floss may be used to separate the battery from the rear case. A stronger alternative to dental floss is an unwound guitar string, such as a 0.009 E string from a 12-string set.
- Thread the floss or string behind the upper battery corners, bring the ends together, wrap them around a folded cloth, and pull evenly.

Step 27



- Remove the battery.
- ⓘ If your replacement battery came in a plastic sleeve, remove the sleeve before installation by pulling it away from the the ribbon cable.
- ★ If your new battery doesn't have adhesive preinstalled, refer to [this guide](#) to replace the adhesive strips.
- ★ Perform a [hard reset](#) after reassembly. This can prevent several issues and simplify troubleshooting.

Compare your new replacement part to the original part—you may need to transfer remaining components or remove adhesive backings from the new part before installing.

To reassemble your device, follow the above steps in reverse order.

Take your e-waste to an [R2 or e-Stewards certified recycler](#).

Repair didn't go as planned? Check out our [Answers community](#) for troubleshooting help.