



# iPhone 6s Plus Wi-Fi/Bluetooth Antenna Replacement

Replace the Wi-Fi/Bluetooth antenna in an iPhone 6s Plus.

Written By: Evan Noronha



# INTRODUCTION

Follow the steps in this guide to replace the Wi-Fi/Bluetooth antenna in an iPhone 6s Plus.



## TOOLS:

- [Standoff Screwdriver for iPhones](#) (1)
- [iFixit Opening Picks set of 6](#) (1)
- [SIM Card Eject Tool](#) (1)
- [P2 Pentalobe Screwdriver iPhone](#) (1)
- [Suction Handle](#) (1)
- [Spudger](#) (1)
- [Tweezers](#) (1)
- [Phillips #000 Screwdriver](#) (1)
- [iFixit Opening Tools](#) (1)
- [iOpener](#) (1)



## PARTS:

- [iPhone 6s Plus Wi-Fi Bluetooth Antenna](#) (1)
- [iPhone 6s Plus Display Assembly Adhesive](#) (1)

## Step 1 — Opening Procedure



- Optionally, apply mild heat to the lower edge of the iPhone using an [iOpener](#) or hair dryer for about a minute.
  - ⓘ Heat softens the adhesive securing the display, making it easier to open.

## Step 2



- i** Opening the display on the 6s Plus separates a thin strip of adhesive around the perimeter of the display. If you prefer to replace the adhesive, have a set of new adhesive strips ready before you continue. It's possible to complete the repair without replacing the adhesive, and you probably won't notice any difference in functionality.
- Apply a suction cup to the lower left corner of the display assembly.
- i** If your display is badly cracked, [covering it with a layer of clear packing tape](#) may allow the suction cup to adhere. Alternatively, very strong tape may be used instead of the suction cup. If all else fails, you can superglue the suction cup to the broken screen.

### Step 3



- Pull up on the suction cup with firm, constant pressure to create a slight gap between the front panel and rear case.

⚠ Pulling too hard may damage the display assembly. Apply just enough pressure to create a small gap between the display assembly and the rear case.

### Step 4



- The safest place to pry from is the notch in the front panel above the headphone jack.
- While still maintaining pressure on the suction cup, insert the flat tip of a spudger into the gap, directly above the headphone jack.



## Step 5



- Twist the spudger to widen the gap between the front panel and the rear case.

## Step 6



- While firmly pulling up on the suction cup, slide the edge of the spudger under the bottom left corner of the display.

## Step 7



- Slide the tip of the spudger up the left side of the phone, between the front panel and the rear case.

## Step 8



- Insert the flat tip of the spudger under the right edge of the display.
- Slide the spudger up the right side.

## Step 9



- Use a plastic opening tool to hold down the rear case while pulling up the suction cup to open the phone.

⚠ Do **not** remove the display completely, or you will damage the data cables connecting the display near the top edge of the iPhone.

## Step 10



- Pull up on the small nub on the suction cup to remove it from the display.



## Step 11




- Gently grasp the display assembly and lift it up to open the phone, using the clips at the top of the front panel as a hinge.
- Open the display to about a 90° angle, and lean it against something to keep it propped up while you're working on the phone.
- ⚠ Don't open the display more than 90°—it is still connected to the top of the phone by the display, digitizer, and front camera cables which can tear easily.
- Add a rubber band to keep the display securely in place while you work. This prevents undue strain on the display cables.
- ⓘ In a pinch, you can use an unopened canned beverage to support the display.

## Step 12 — Battery Connector



- Remove two Phillips screws securing the battery connector bracket to the logic board, of the following lengths:

- One 2.9 mm screw
- One 2.3 mm screw

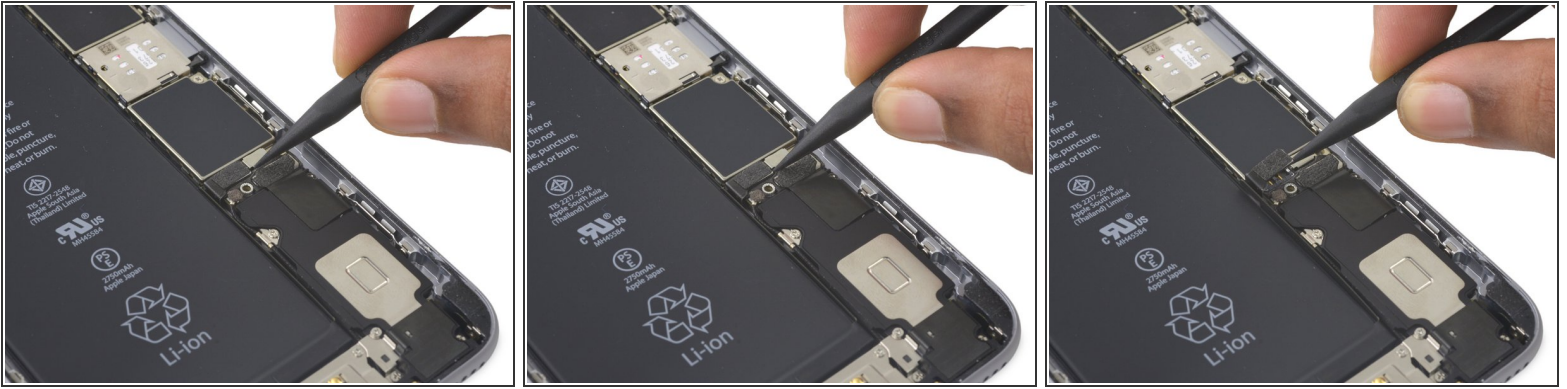
 Throughout this guide, [keep careful track of your screws](#) so that each one goes back where it came from during reassembly. Installing a screw in the wrong place can cause permanent damage.

## Step 13



- Remove the battery connector bracket.

## Step 14



- Use a spudger or a clean fingernail to disconnect the battery connector by prying it straight up off the logic board.

## Step 15



- Bend the connector back to ensure it doesn't make contact and power the iPhone on while you're working on it.



## Step 16 — Display Assembly



- Remove the following Phillips screws:
  - Three 1.3 mm screws
  - One 1.6 mm screw
  - One 3.0 mm screw
- ☑ During reassembly, it's critical to place this 3.0 mm screw in the top-right corner of the bracket. Placing it anywhere else may damage the logic board.

## Step 17



- Remove the display cable bracket.



## Step 18



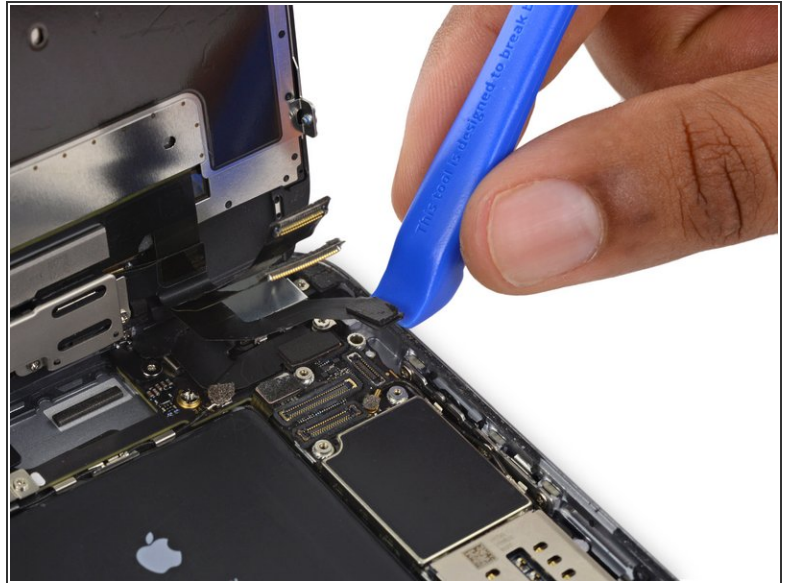
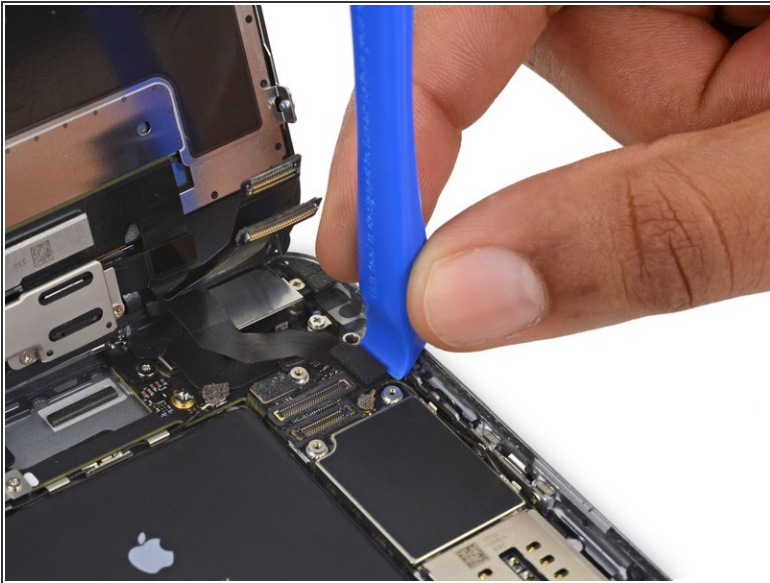
- ⚠ Be careful to only pry up on the connector itself and not the socket on the logic board.
- Use a plastic opening tool to disconnect the front-facing camera and sensor cable connector.


## Step 19



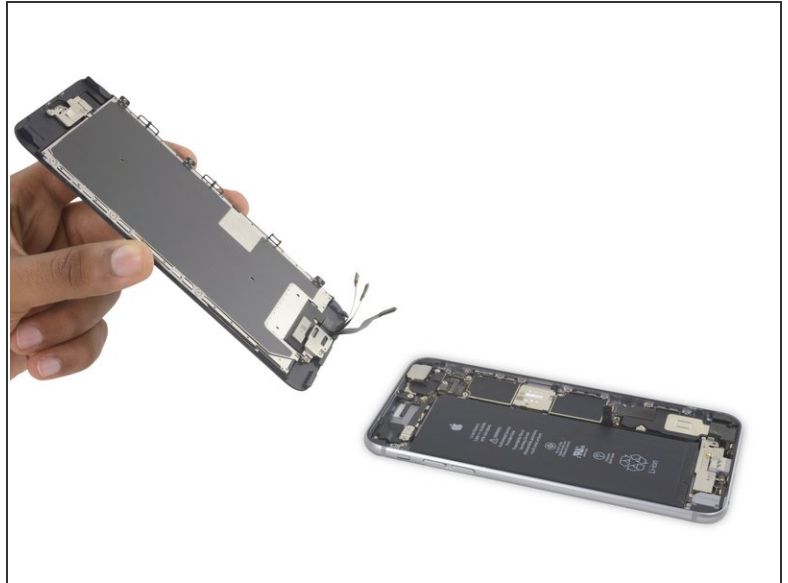
- Use a plastic opening tool to disconnect the digitizer cable by prying it straight up from its socket on the logic board.
- ✦ When reconnecting the digitizer cable, **do not press the center of the connector**. Press one end of the connector, then press the opposite end. Pressing in the center of the connector can bend the component and cause digitizer damage.

## Step 20



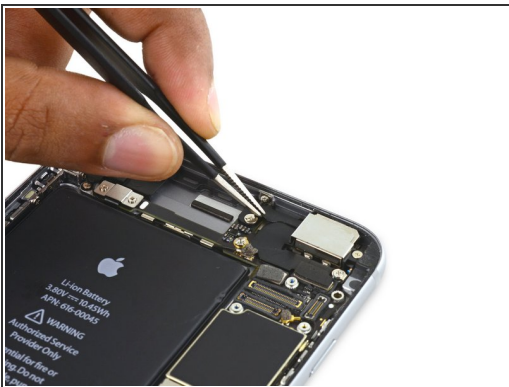
-  Make sure the battery is disconnected before you disconnect or reconnect the cable in this step.
- Disconnect the home button/fingerprint sensor cable by prying it straight up from its socket on the logic board.

## Step 21



- Remove the display assembly.
- ☞ During reassembly, pause here if you wish to [replace the adhesive around the edges of the display](#).

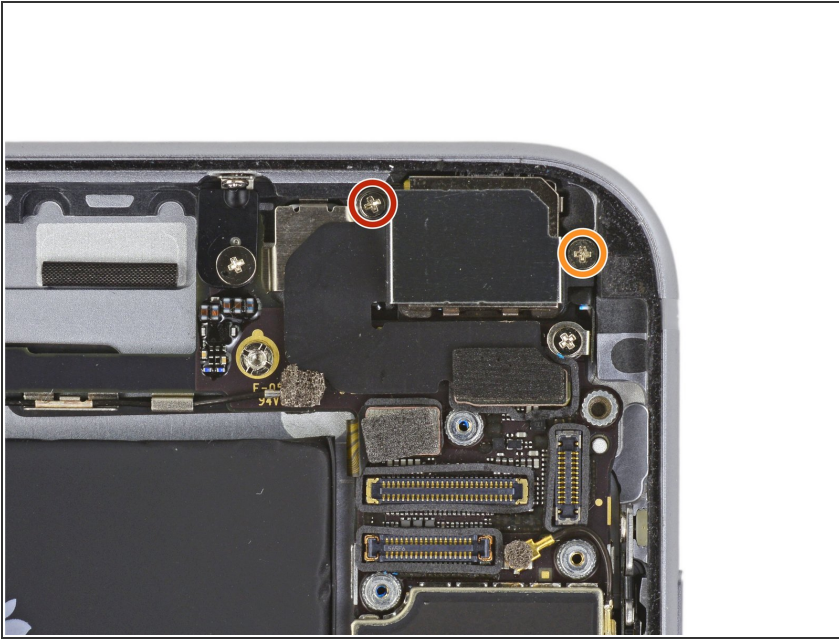
## Step 22 — iSight Camera



- Peel up any tape covering the iSight camera bracket screws.



## Step 23



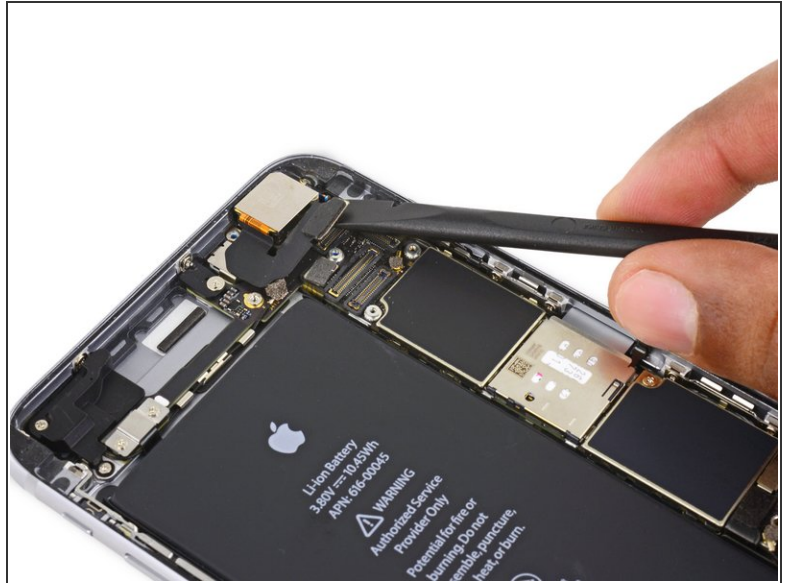
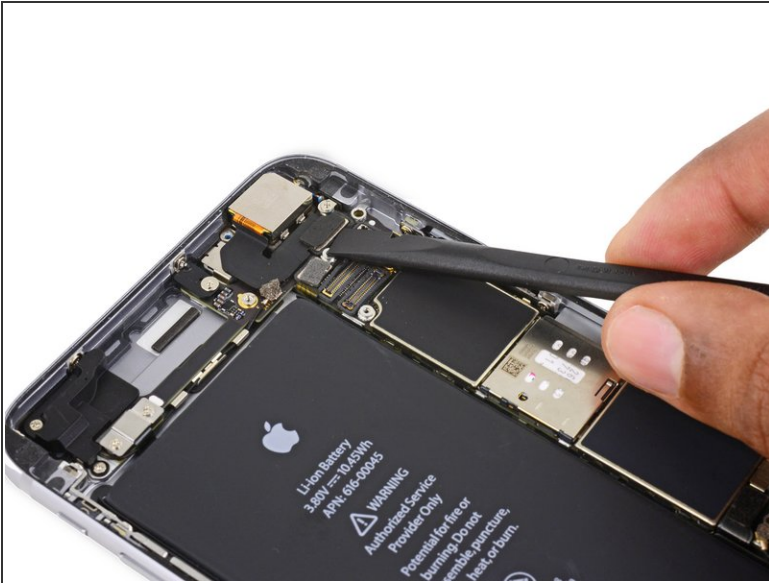
- Remove the following Phillips screws over the camera bracket:
  - One 1.9 mm screw
  - One 2.4 mm screw

## Step 24



- Remove the iSight camera bracket.

## Step 25



- Disconnect the iSight camera connector from its socket on the logic board.

⚠ Be sure to pry up *only* the connector and not the socket on the logic board.

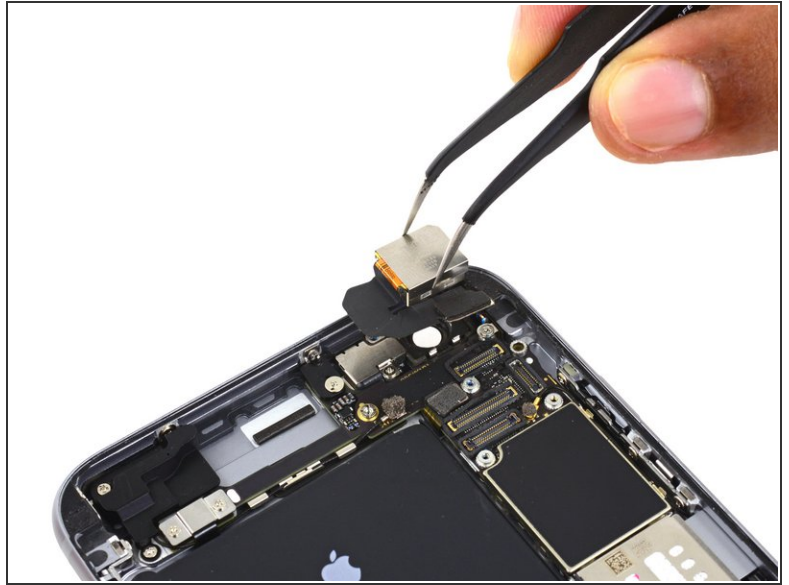
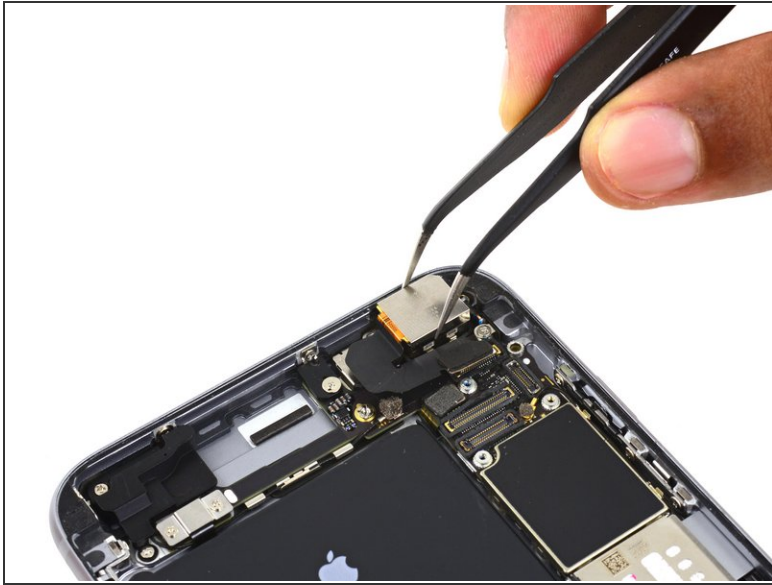
## Step 26



- Insert the flat end of the spudger between the iSight camera and rear casing.
- Gently pry the camera out from its housing.



## Step 27



- Remove the iSight camera.

## Step 28 — SIM Tray



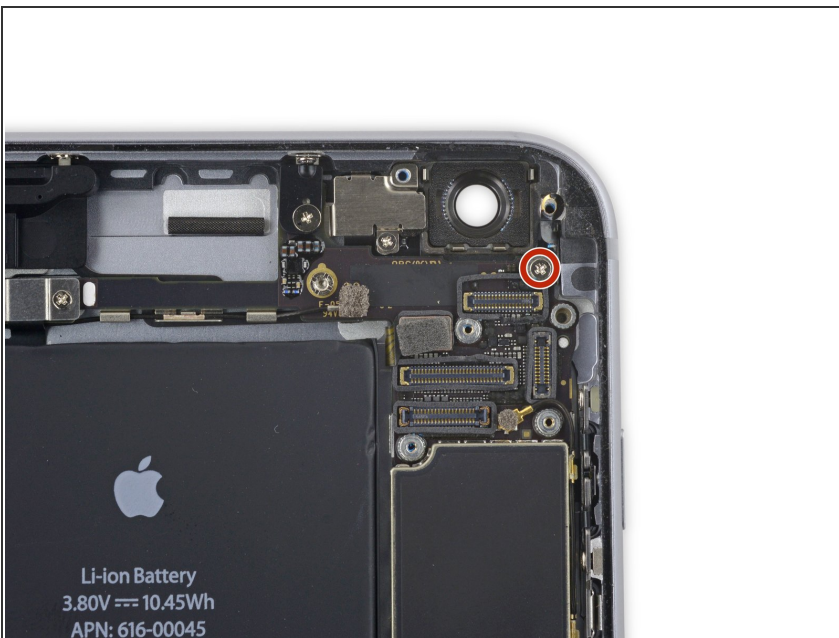
- Insert a SIM eject tool into the hole in the SIM tray.
- Press to eject the SIM tray.

## Step 29



- Remove the SIM tray.
- ★ When reinserting the SIM tray, be sure to orient the tray such that the SIM eject hole is on the bottom.

## Step 30 — Logic Board



- Remove the single 1.4 mm Phillips screw holding the NFC bracket in place.

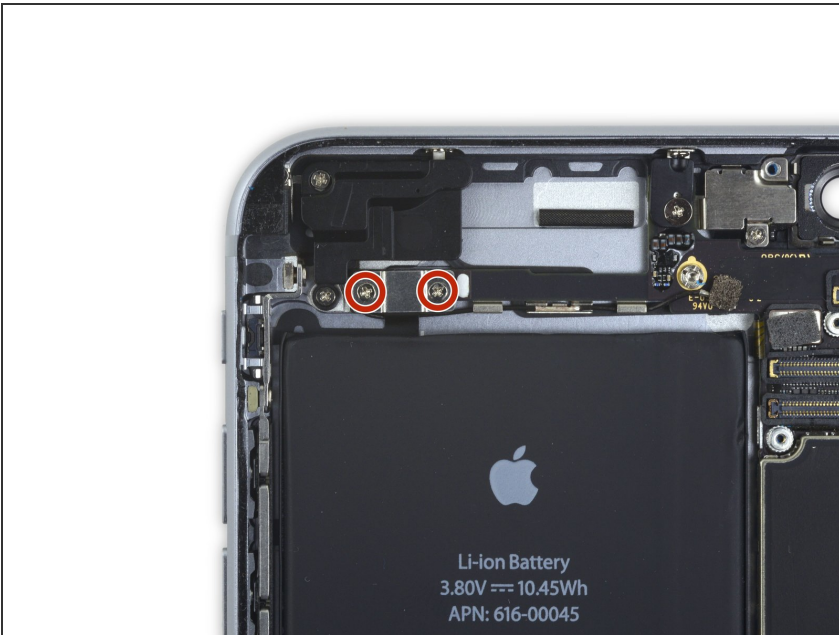


## Step 31



- Remove the NFC bracket.

## Step 32



- Remove the two 2.7 mm Phillips screws securing the audio control cable bracket to the logic board.

## Step 33



- Remove the audio control cable bracket.

## Step 34



- Disconnect the audio control cable by prying its connector straight up from its socket on the logic board.



## Step 35



- Disconnect the cellular antenna cable by prying its connector straight up from its respective socket on the logic board.

## Step 36



- Disconnect the Wi-Fi diversity antenna cable by prying its connector up from the logic board.

## Step 37



- Disconnect the power button flex cable from its socket on the logic board.

## Step 38



- Disconnect the Lightning connector interconnect antenna cable by prying it up from the logic board.



## Step 39



- Use the flat end of a spudger to disconnect the Lightning connector flex cable from the logic board.

## Step 40




- Deroute the antenna cable from the two clips on the right edge of the logic board.


## Step 41



- Remove the following screws:

- One 1.3 mm Phillips screw
- One 2.6 mm Phillips screw
- One 2.2 mm standoff screw

 Standoff screws are best removed using an [iPhone Standoff Screwdriver Bit](#) and [driver handle](#).

 In a pinch, a small flathead screwdriver will do the job—but use extra caution to ensure it doesn't slip and damage surrounding components.

## Step 42



- Remove the bracket.

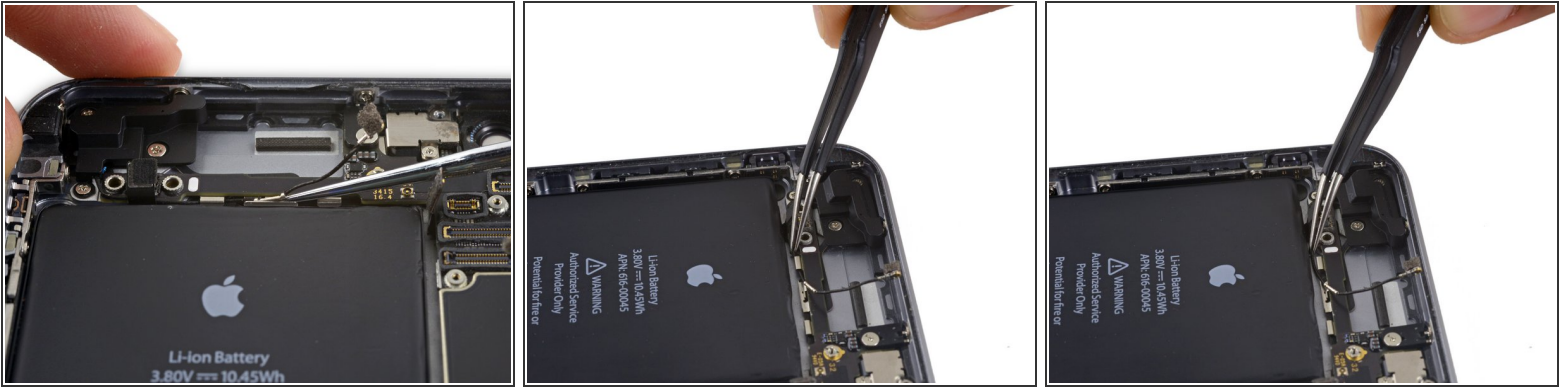
## Step 43



- Deroute the upper left cellular antenna cable from the first logic board clip by nudging it out from under the clip, towards the battery.



## Step 44



- Continue derouting the cellular antenna cable from the second and third logic board clips.
  - Use the pointed tip of a spudger to gently pry the cellular antenna cable from the middle logic board clip.
- ⚠ Don't try to remove it by pulling on the cable, as it will tear easily.
- 📌 In order for the cable to reach its socket on the logic board, you must route it above the logic board and underneath the audio control flex cable, as shown in the first photo.

## Step 45



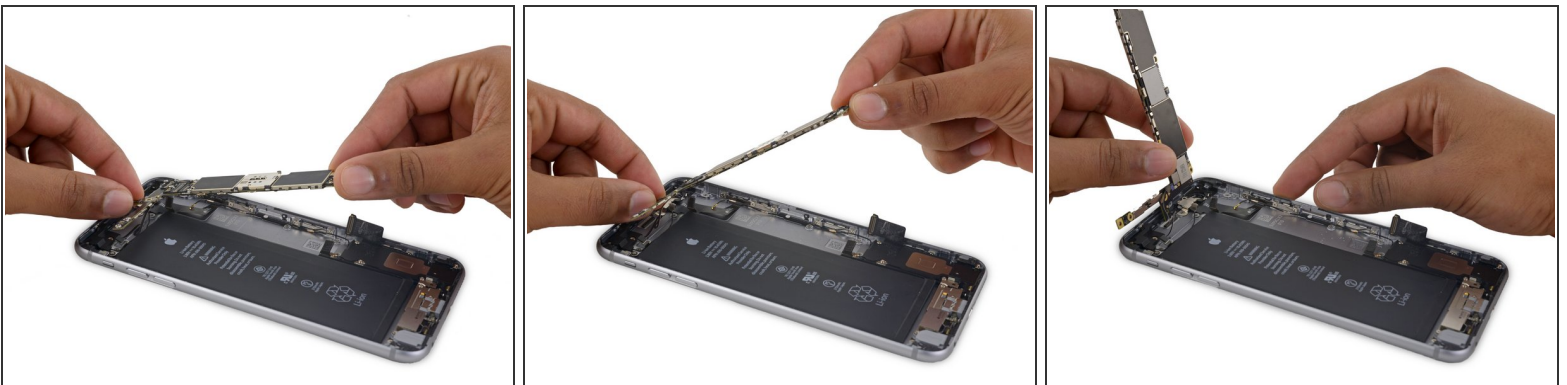
- Remove the final 2.0 mm Phillips screw directly below the SIM card reader.

## Step 46



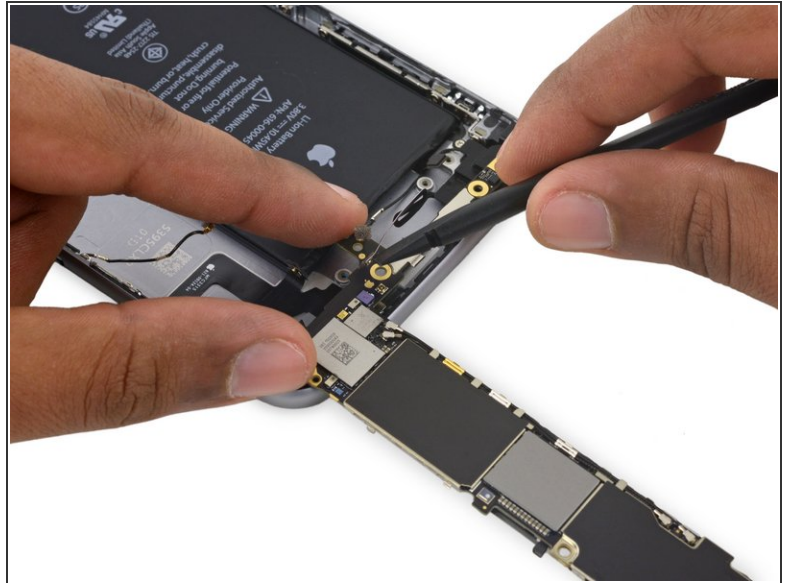
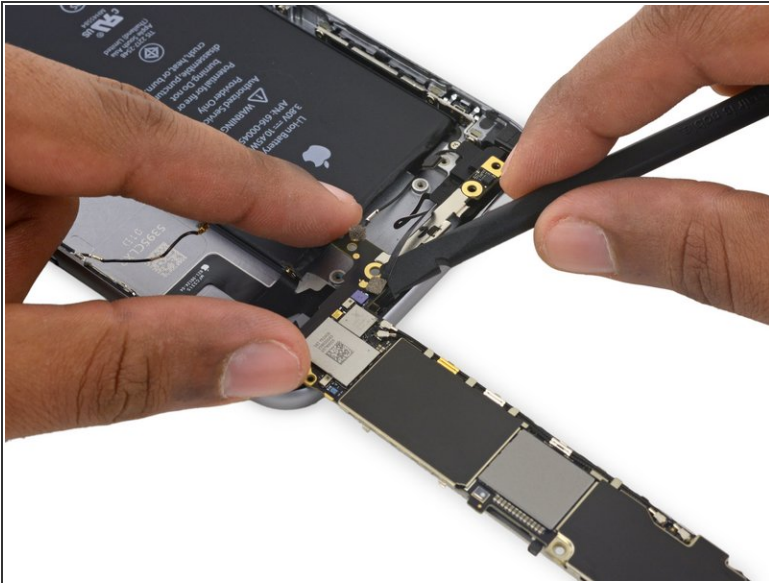
- Carefully raise—but do **not** remove—the logic board, lifting it from the bottom edge nearest the Lightning connector.

## Step 47



- Tip the logic board up to a vertical position to expose the single antenna connector on the underside, near the top edge of the board.
- ⚠ Do not attempt to fully remove the logic board yet, as the Wi-Fi/Bluetooth antenna is still connected to the underside of the board.

## Step 48



- Gently lay the logic board upside-down, with the top portion resting against the rear case of the iPhone.
- Use the flat end of the spudger to disconnect the Wi-Fi/Bluetooth antenna cable from its socket on the back of the logic board.

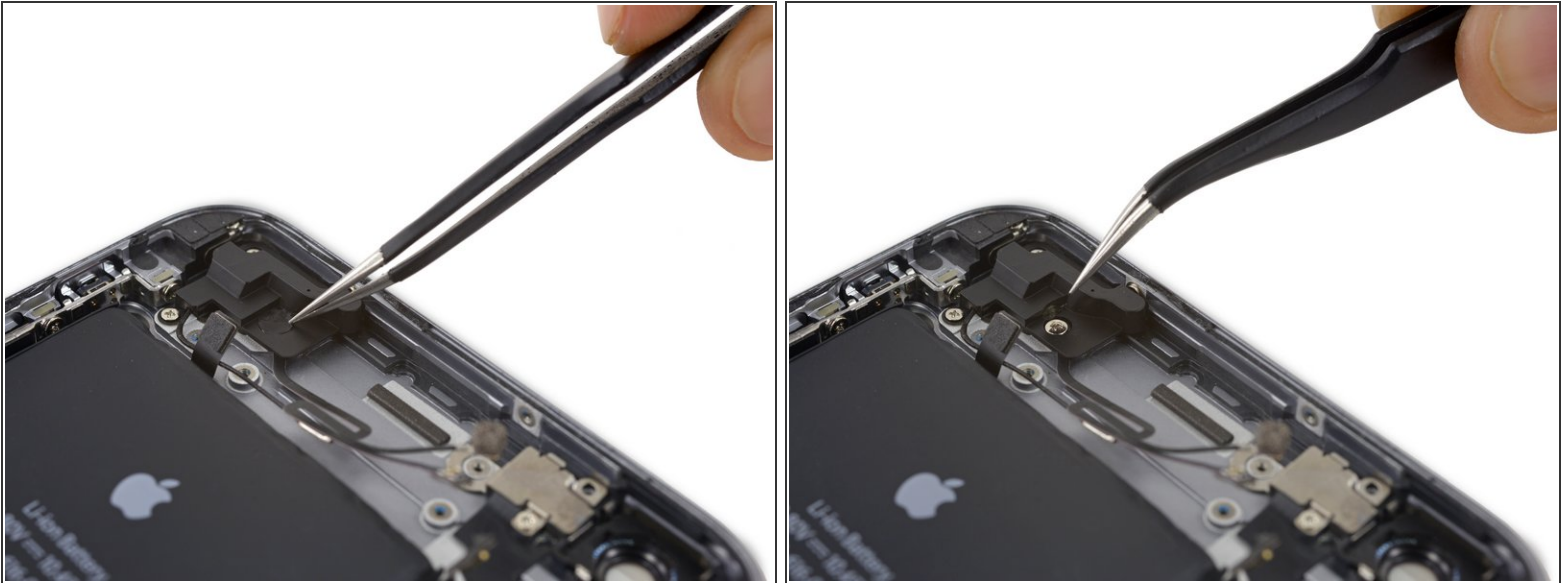
## Step 49



- Remove the logic board.



## Step 50 — Wi-Fi/Bluetooth Antenna



- Remove the sticker over the third screw holding the cellular antenna in place.

## Step 51



- Remove the following three Phillips screws holding the cellular antenna in place:
  - One 2.7 mm screw
  - One 1.7 mm screw
  - One 1.3 mm screw

## Step 52



- Remove the cellular antenna.

## Step 53



- Remove the single 1.3 mm Phillips screw securing the antenna to the rear case.

## Step 54



- Remove the Wi-Fi/Bluetooth antenna.

To reassemble your device, follow these instructions in reverse order.