



iPhone 6s Speaker Replacement

Prereq-only for loudspeaker removal

Written By: Arthur Shi



INTRODUCTION

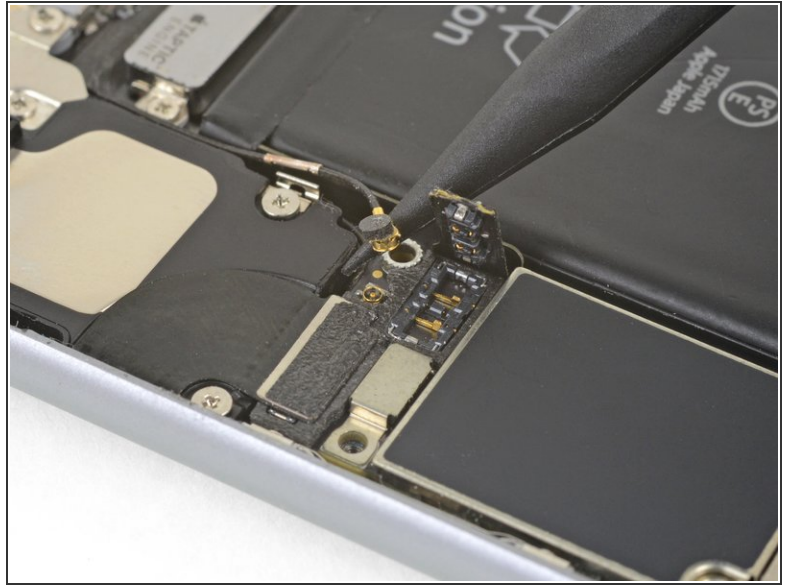
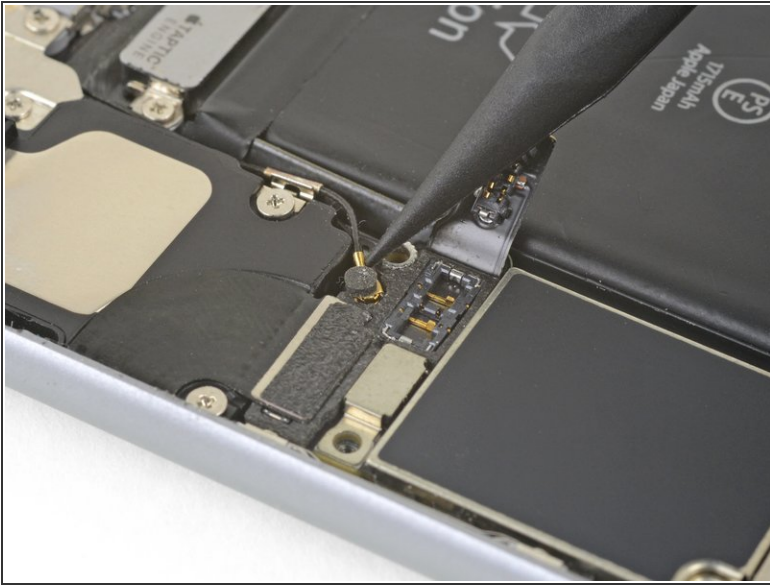
Prerequisite guide only! This guide shows how to remove the loudspeaker module.



TOOLS:

- [Spudger](#) (1)
 - [Phillips #000 Screwdriver](#) (1)
-

Step 1 — Speaker



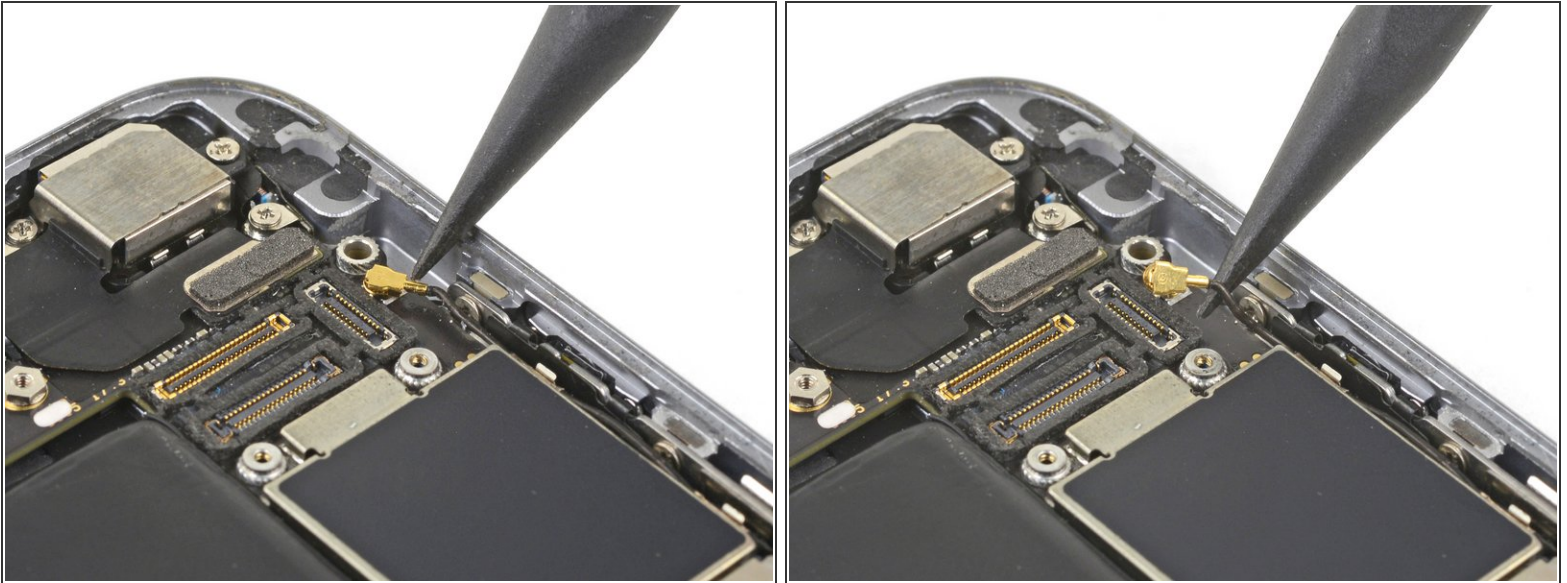
- Use the point of a spudger to lift and disconnect the antenna cable from the bottom end of the logic board.
- ☑ To reconnect antenna cables like these to the socket, carefully align the connector to the socket, then use the flat end of a spudger to press down. It should click in place. If not, check for alignment. Do not use excessive force.

Step 2



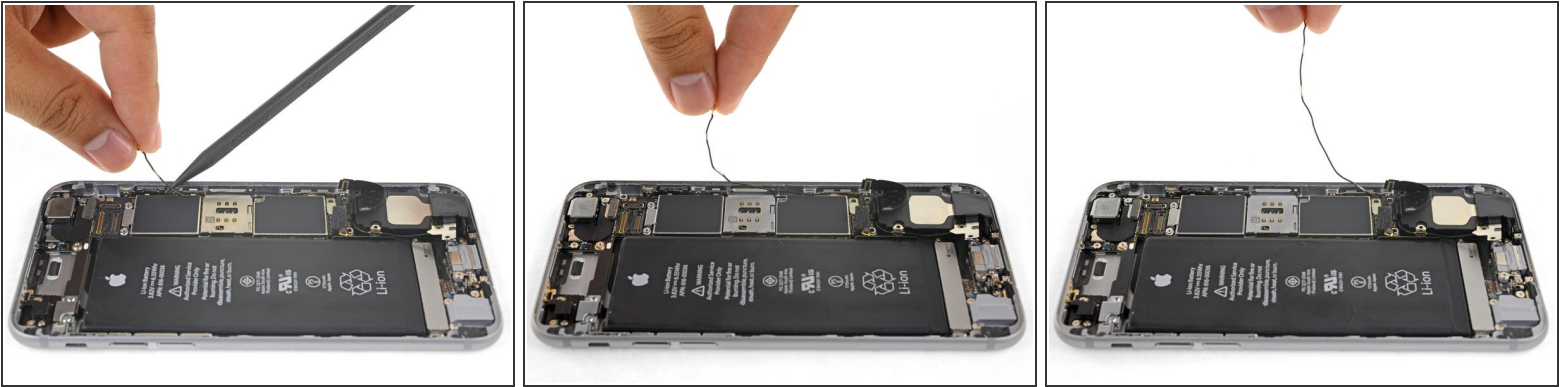
- Use the point of a spudger to lift up and disconnect the Lightning connector ribbon cable from its socket on the logic board.

Step 3



- i** If you are following this guide to replace the Lightning connector, you can choose to keep the antenna cable connected and skip the next two steps. Be very careful not to strain the delicate antenna cable when you move the loudspeaker around.
- Use the point of a spudger to lift and disconnect the antenna cable from its socket near the top of the logic board.

Step 4



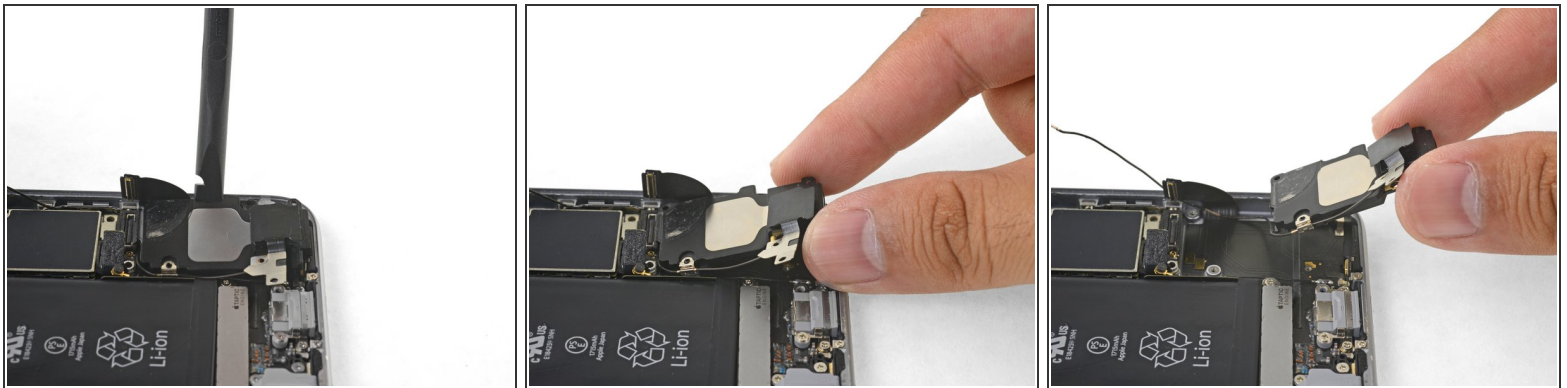
- Carefully lift the antenna cable and de-route it from the edge of the phone. Use the point of a spudger to help lift the cable to free it from the retaining clips.
- ⓘ If the cable does not have enough room to lift up, loosen [this Phillips screw](#) securing the logic board so that the board can give more wiggle room.
 - ✦ Be sure to re-tighten this screw during re-installation.
- ✦ During re-installation, be sure to route the antenna cable [underneath the logic board corner](#).
- ✦ During re-installation, you can also re-insert the SIM card tray after re-routing the antenna cable.
- ⚠ If you feel any resistance, **stop** and make sure that the tray isn't snagging the antenna cable.

Step 5



- Remove the following Phillips screws securing the speaker to the rear case:
 - Two 2.6 mm screws
 - One 2.3 mm screw
 - One 2.3 mm screw
 - ⓘ This screw is different from the prior one. Be sure not to mix the two together.
 - One 3.0 mm screw

Step 6



- Insert the flat end of a spudger between the long edge of the speaker module and the case wall.
- Pry gently to loosen the speaker module.
- Once the module is loose, lift and remove the speaker module from the phone.

To reassemble your device, follow these instructions in reverse order.