



# iPhone 7 Logic Board Disconnection

prereq only

Written By: Evan Noronha



# INTRODUCTION

prereq only

---

## TOOLS:

- [SIM Card Eject Tool](#) (1)
  - [P2 Pentalobe Screwdriver iPhone](#) (1)
  - [iOpener](#) (1)
  - [Suction Handle](#) (1)
  - [Spudger](#) (1)
  - [iFixit Opening Picks set of 6](#) (1)
  - [Tri-point Y000 Screwdriver Bit](#) (1)
  - [Tweezers](#) (1)
  - [Phillips #000 Screwdriver](#) (1)
  - [iPhone Standoff Screwdriver Bit](#) (1)
-

## Step 1 — Logic Board Connectors



- Use the flat end of a spudger to disconnect the rear-facing camera connector.

## Step 2



- Remove the following Phillips screws securing the rear camera bracket to the rear case:
  - One 1.3 mm screw
  - One 2.5 mm screw



## Step 3



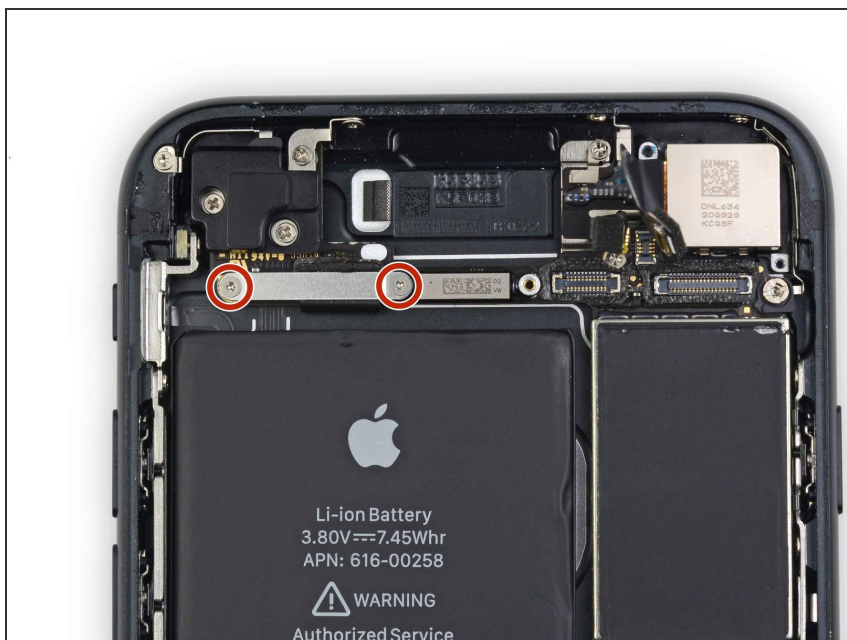
- Remove the bracket.

## Step 4



- Use the pointed end of a spudger to pry up and disconnect the antenna bus connector, just left of the rear camera module.

## Step 5



- Remove the two 1.2 mm tri-point screws securing the upper cable bracket.

## Step 6



- Remove the upper cable bracket.



## Step 7



- Use the flat end of a spudger to disconnect the upper cable connector.

## Step 8



- Remove the Phillips screws securing the Wi-Fi antenna:
  - Three 1.2 mm screws
  - One 1.7 mm screw

## Step 9



- Remove the top left antenna.

## Step 10



- Remove the following Phillips screws:
  - One 1.3 mm screw
  - One 2.2 mm screw

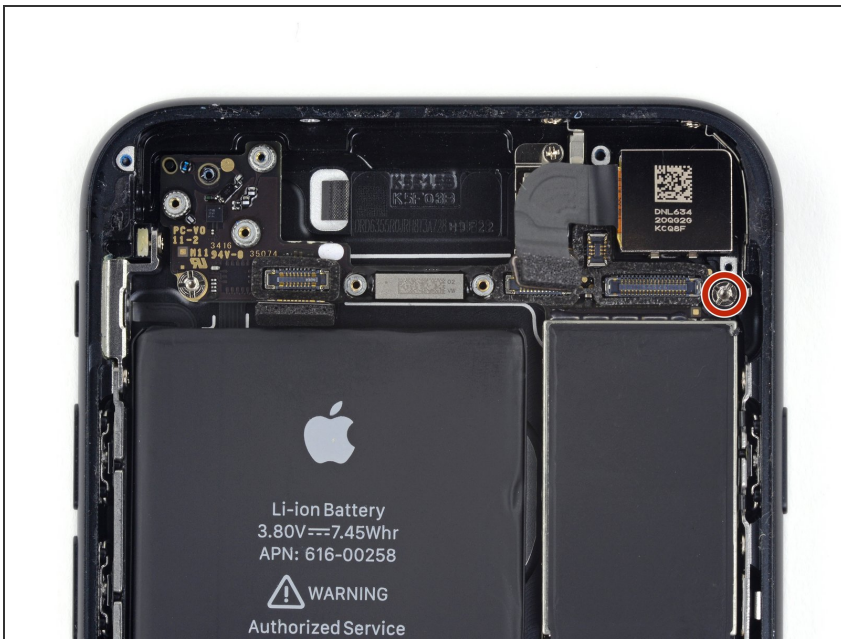


## Step 11



- Remove the bracket.

## Step 12



- Remove the 2.2 mm standoff screw from the grounding bracket.
- ⓘ Standoff screws are best removed using an [iPhone Standoff Screwdriver Bit](#) and [driver handle](#).
- ⚠ In a pinch, a small flathead screwdriver will do the job—but use extra caution to ensure it doesn't slip and damage surrounding components.



## Step 13



- Use tweezers to gently bend the logic board grounding bracket out of the way.

To reassemble your device, follow these instructions in reverse order.