



iPhone 7 Plus Speaker Replacement

Remove or replace the primary loudspeaker on the bottom edge of the iPhone 7 Plus.

Written By: Jeff Suovanen



INTRODUCTION

The iPhone 7 Plus uses both the primary loudspeaker and the earpiece speaker together to produce stereo sound. Use this guide to replace the primary loudspeaker at the bottom of the phone only. Replacing this speaker can help resolve issues such as loss of sound, poor sound quality, and distorted sound.



TOOLS:

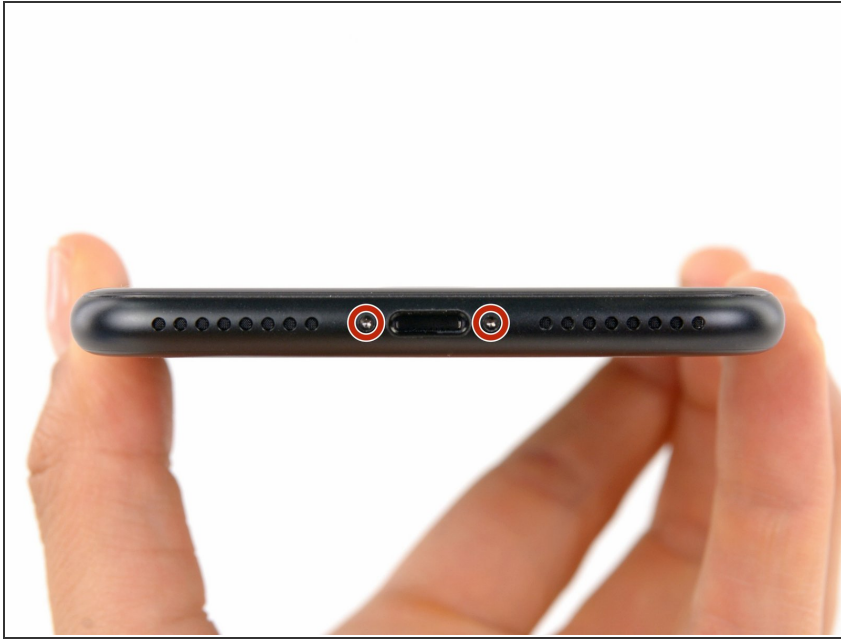
- [P2 Pentalobe Screwdriver iPhone](#) (1)
- [iOpener](#) (1)
- [Suction Handle](#) (1)
- [iFixit Opening Picks set of 6](#) (1)
- [Spudger](#) (1)
- [Tri-point Y000 Screwdriver Bit](#) (1)
- [Tweezers](#) (1)



PARTS:

- [iPhone 7 Plus Loudspeaker](#) (1)
- [iPhone 7 Plus Loudspeaker Gaskets](#) (1)
- [iPhone 7 Plus Display Assembly Adhesive](#) (1)

Step 1 — Pentalobe Screws



- ⚠ Before you begin, discharge your iPhone battery below 25%. A charged lithium-ion battery can catch fire and/or explode if accidentally punctured.
- Power off your iPhone before beginning disassembly.
- Remove the two 3.4 mm pentalobe screws at the bottom edge of the iPhone.
- ⓘ Opening the iPhone's display will compromise its waterproof seals. Have [replacement seals](#) ready before you proceed past this step, or take care to avoid liquid exposure if you reassemble your iPhone without replacing the seals.

Step 2 — Opening Procedure



- ⓘ Heating the lower edge of the iPhone will help soften the adhesive securing the display, making it easier to open.
- Use a hairdryer or [prepare an iOpener](#) and apply it to the lower edge of the iPhone for about a minute in order to soften up the adhesive underneath.

Step 3



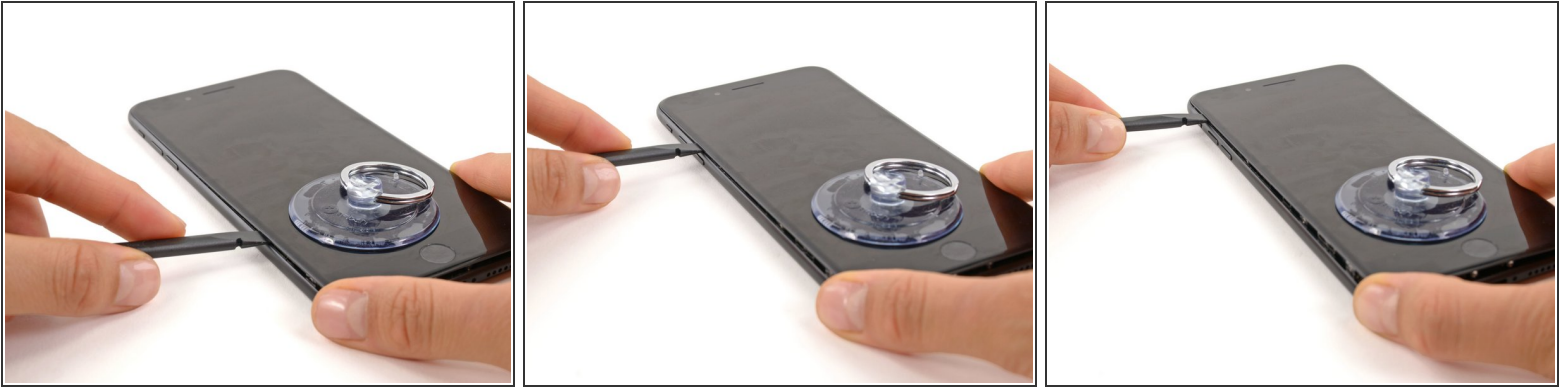
- Apply a suction cup to the lower half of the front panel, just above the home button.
- ⓘ Be sure the suction cup does not overlap with the home button, as this will prevent a seal from forming between the suction cup and front glass.

Step 4



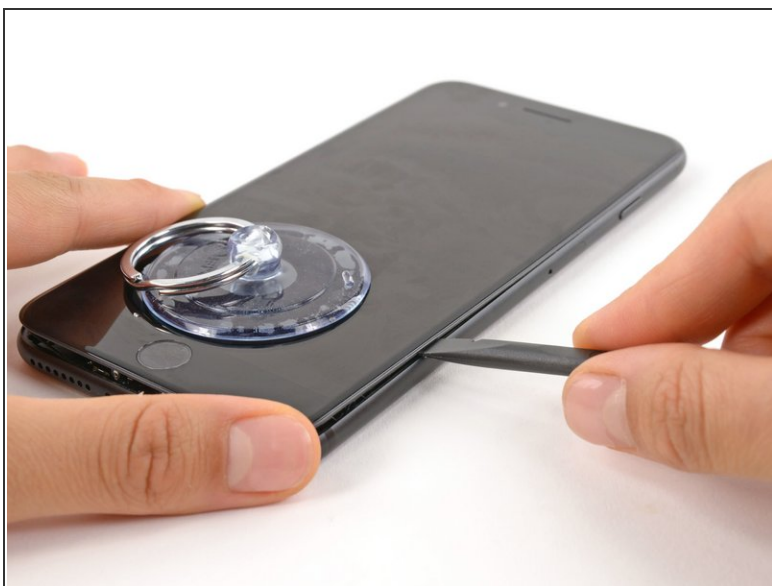
- Pull up on the suction cup with firm, constant pressure to create a slight gap between the front panel and rear case.
- Insert the flat end of a spudger into the gap.
 - ⓘ The watertight adhesive holding the display in place is very strong; creating this initial gap takes a significant amount of force. If you're having a hard time opening a gap, rock the screen up and down to weaken the adhesive until you can fit a spudger inside.
- While pulling up on the suction cup, twist the spudger to widen the opening between the screen and rear case.

Step 5



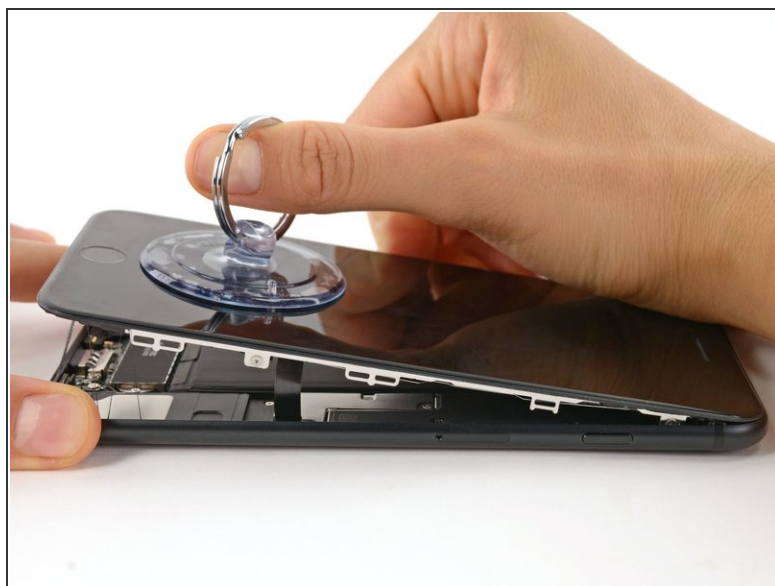
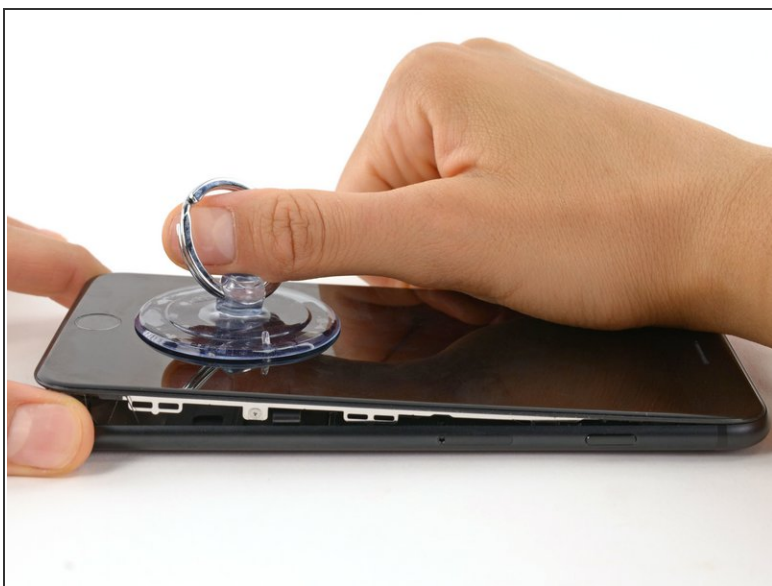
- Insert the flat end of the spudger between the front panel and the rear case at the lower left edge of the iPhone.
 - Slide the spudger up the left edge of the phone starting at the lower edge and moving towards the volume control buttons and silent switch, breaking up the adhesive holding the display in place.
- ⚠ Do not try to pry the top edge of the display away from the rear case, as it is held in place by plastic clips that may break.

Step 6




- Remove the spudger from the left side of the phone and insert the flat end into the bottom right corner.
- Slide the spudger up the right edge of the phone to the top corner, breaking up the adhesive holding the display in place.

Step 7



- Pull up on the suction cup to lift up the display and open the iPhone.

 **Do not raise the display more than 10°** as there are delicate ribbon cables along the right edge of the device connecting the display to the logic board.

Step 8



- Pull up on the small nub on the suction cup to remove it from the front panel.

Step 9



- Slide an opening pick underneath the display along the top edge of the phone to loosen the last of the adhesive.

Step 10



- Pull the display assembly slightly away from the top edge of the phone to disengage the clips holding it to the rear case.
- Open the iPhone by swinging the display up from the left side, like the back cover of a book.
 - ⚠ Don't try to fully separate the display yet, as several fragile ribbon cables still connect it to the iPhone's logic board.

Step 11 — Battery Disconnection



- Remove the following four tri-point Y000 screws securing the lower display cable bracket to the logic board:

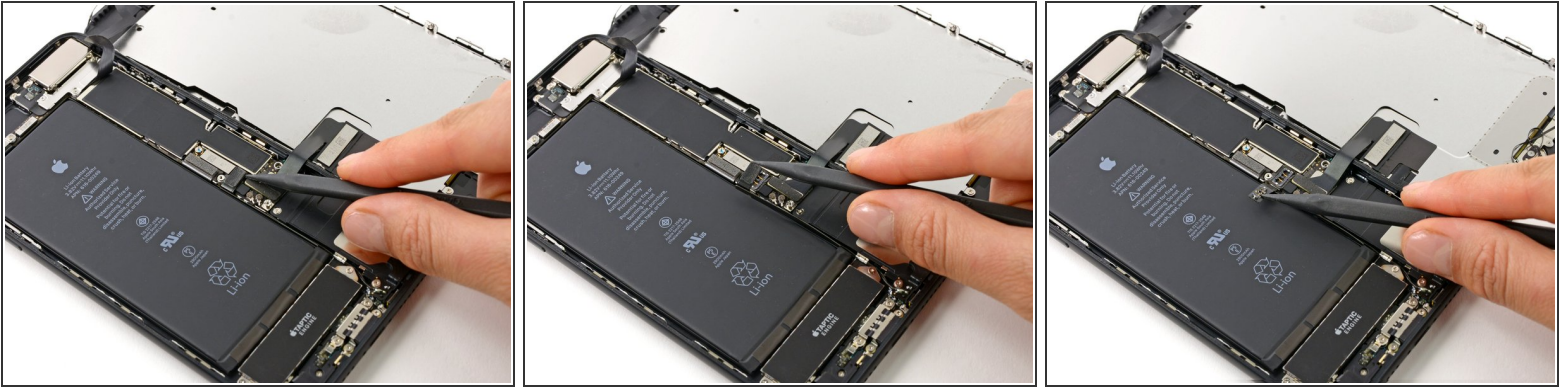
- Three 1.2 mm screws
- One 2.6 mm screw

Step 12



- Remove the lower display cable bracket.


Step 13





- Use the point of a spudger to lift the battery connector out of its socket on the logic board.
- ⓘ Bend the connector cable up slightly to prevent it from making contact with the socket and providing power to the phone.

Step 14 — Display Assembly



 Make sure the battery is disconnected before you disconnect or reconnect the cables in this step.

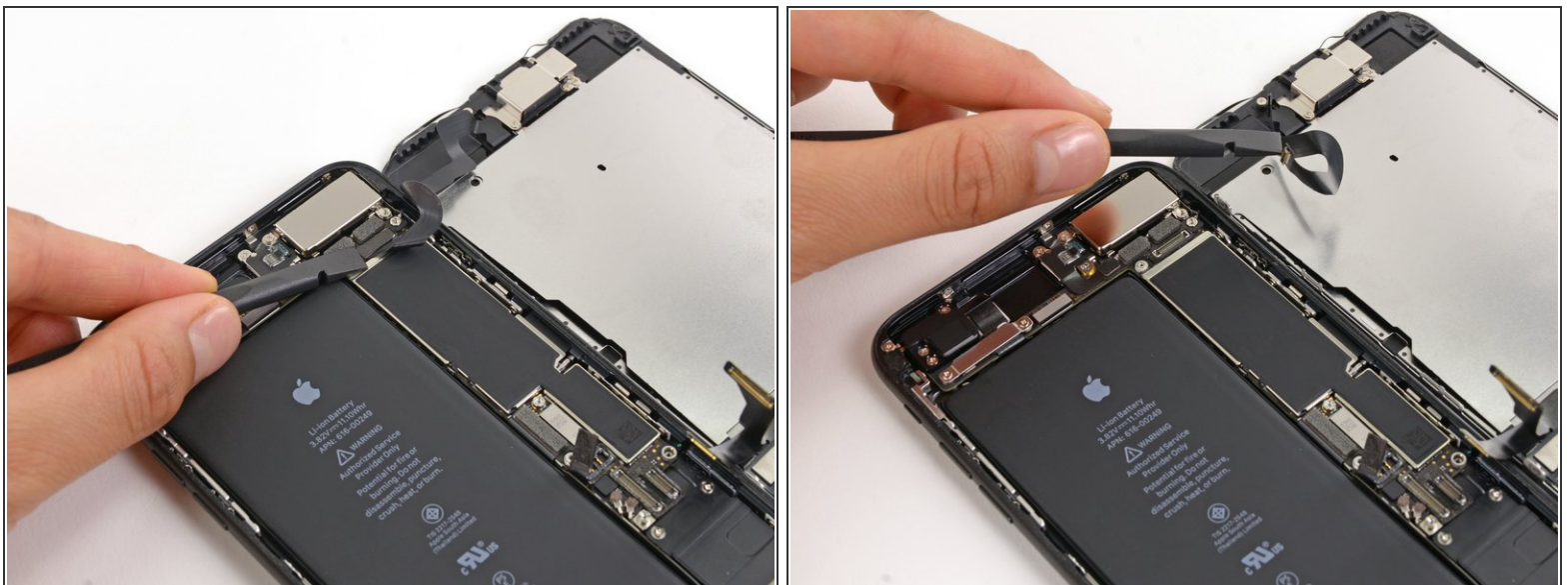
- Use the flat end of a spudger or a fingernail to disconnect the two lower display connectors by prying them straight up from their sockets on the logic board.
-  To re-attach press connectors, press down on one end until it clicks into place, then repeat on the other end. Do not press down on the middle. If the connector is even slightly misaligned, the connector can bend, causing permanent damage.
-  If you have a blank screen, white lines on the display, or partial or complete lack of touch response after reassembling your phone, try disconnecting and carefully reconnecting both of these cables and make sure they are fully seated.

Step 15



- Remove the three tri-point Y000 screws securing the bracket over the front panel sensor assembly connector:
 - One 1.3 mm screw
 - Two 1.0 mm screws
- Remove the bracket.

Step 16



- Disconnect the front panel sensor assembly connector from its socket on the logic board.
- ✦ This press connector should also be reconnected one end at a time to minimize the risk of bending.

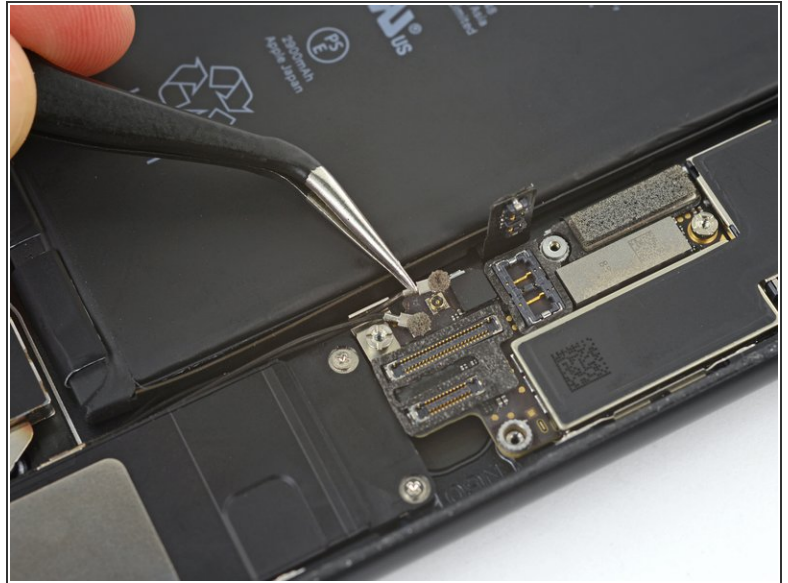
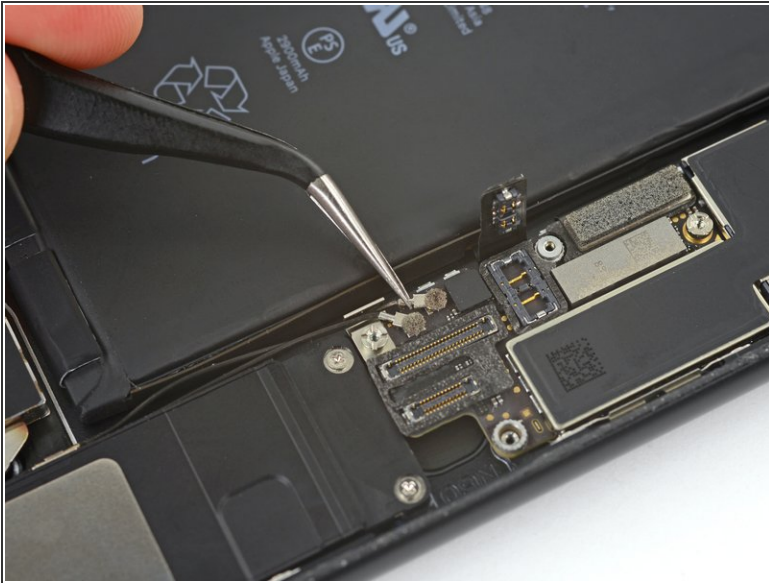
This document was generated on 2019-09-17 12:19:49 PM (MST).

Step 17



- Remove the display assembly.
- ★ During reassembly, pause here if you wish to [replace the adhesive around the edges of the display](#).

Step 18 — Speaker



- Use a thin pry tool or tweezers to carefully pry up and disconnect the upper coaxial cable connector from the logic board.
- ⓘ There are two coaxial connectors in close proximity. Disconnect the one nearest the battery connector.
- ✦ During reassembly, this can be tricky to reconnect. Hold the connector in place over its socket and press down with the flat of your spudger. The connector should snap into place.

Step 19



- Carefully de-route the coaxial cable you just disconnected from the small metal clip holding it to the logic board.

Step 20



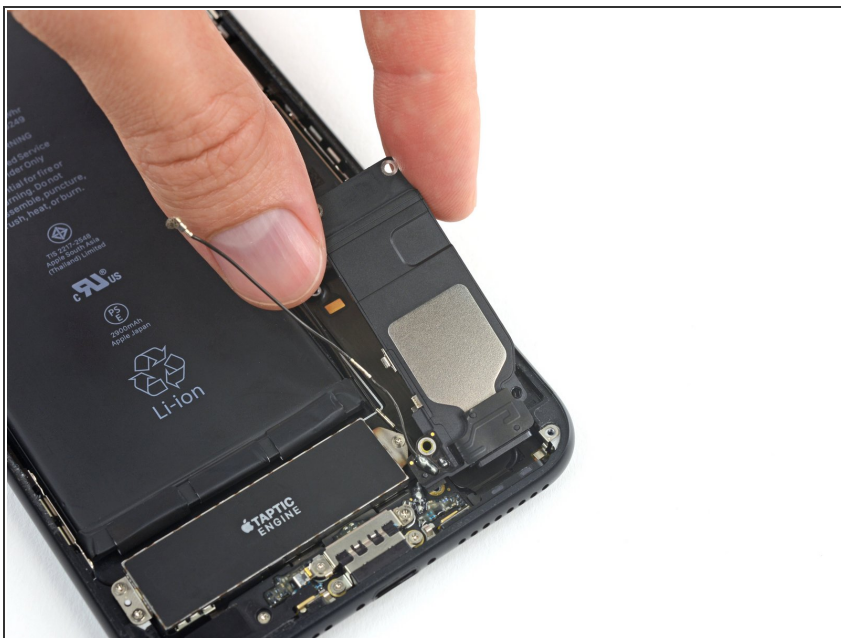
- Use tweezers or the point of your spudger to pry both coaxial cables out of the metal clip holding them on the side of the speaker.

Step 21



- Remove the five Phillips screws securing the speaker:
 - Three 1.3 mm screws
 - One 2.3 mm screw
 - One 3.3 mm screw

Step 22



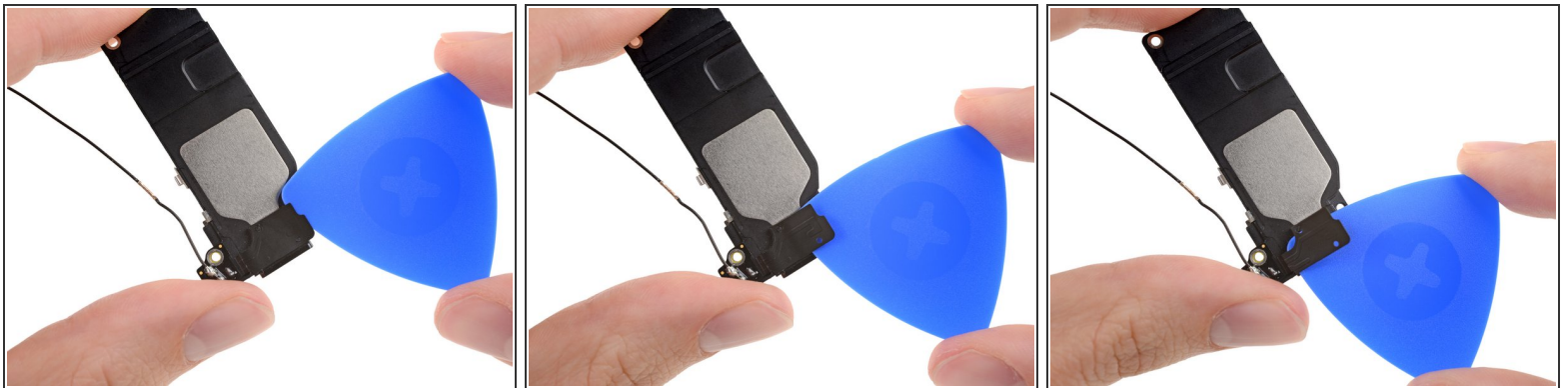
- Remove the speaker.
- ★ Inspect the [gasket around the speaker opening](#) for damage, and replace it if necessary before installing your new speaker.

Step 23 — Wi-Fi Diversity Antenna



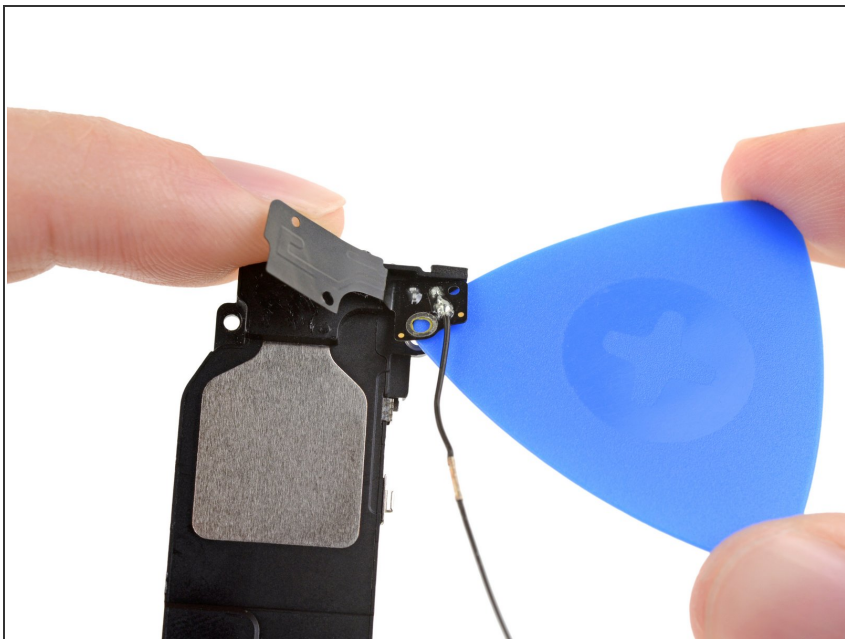
- Warm the lower speaker area where the antenna is adhered with an iOpener, hair dryer, or heat gun, until it's slightly too hot to touch.
- ❗ Heat helps soften the adhesive securing the antenna.

Step 24



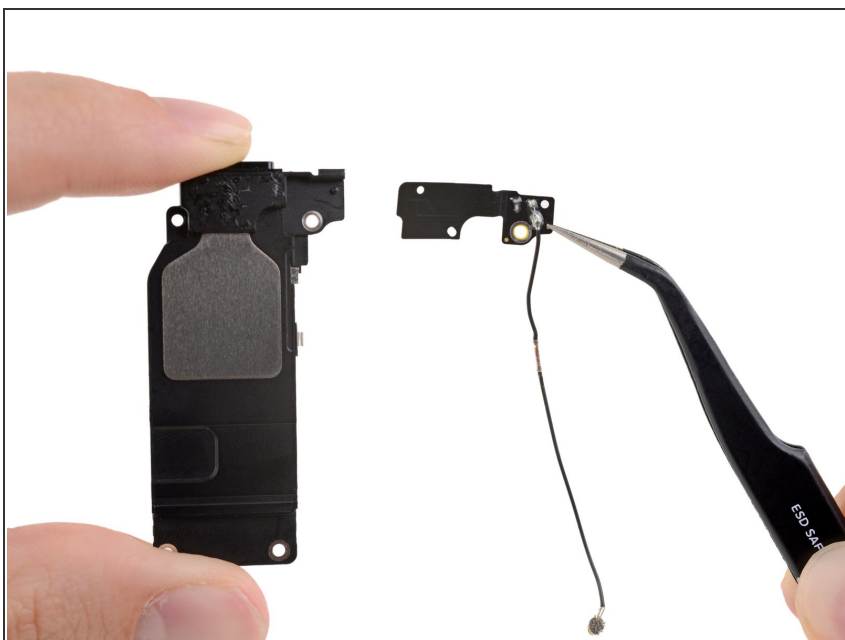
- Slide an opening pick between the antenna and the speaker on the right side, and carefully separate the adhesive underneath.

Step 25



- Rotate the speaker and re-insert your opening pick on the opposite side.
- Separate any remaining adhesive securing the antenna.
- If necessary, re-heat the adhesive until it separates easily.

Step 26



- Remove the Wi-Fi diversity antenna from the speaker.

Compare your new replacement part to the original part—you may need to transfer remaining components or remove adhesive backings from the new part before installing.

To reassemble your device, follow the above steps in reverse order.

Take your e-waste to an [R2 or e-Stewards certified recycler](#).

Repair didn't go as planned? Check out our [Answers community](#) for troubleshooting help.