



iPhone 8 Front Camera and Sensor Cable Replacement

Replace the front camera and sensor cable for the iPhone 8.

Written By: Arthur Shi



INTRODUCTION

Follow this guide to replace the front camera and sensor cable for your iPhone 8. This assembly includes a microphone, front camera, proximity sensor, and ambient light sensor.



TOOLS:

- [P2 Pentalobe Screwdriver iPhone](#) (1)
- [Suction Handle](#) (1)
- [iFixit Opening Picks set of 6](#) (1)
- [iOpener](#) (1)
- [Spudger](#) (1)
- [Tweezers](#) (1)
- [Phillips #000 Screwdriver](#) (1)







PARTS:

- [iPhone 8 Front Camera and Sensor Cable](#) (1)
- [iPhone 8 Front Camera and Sensor Connector Bracket](#) (1)
- [iPhone 8 Display Assembly Adhesive](#) (1)

Step 1 — Pentalobe Screws



-  Before you begin, discharge your iPhone battery below 25%. A charged lithium-ion battery can catch fire and/or explode if accidentally punctured.
-  Power off your iPhone before beginning disassembly.
-  Remove the two 3.5 mm pentalobe screws on the bottom edge of the iPhone.
-  Opening the iPhone's display will compromise its waterproof seals. Have [replacement seals](#) ready before you proceed past this step, or take care to avoid liquid exposure if you reassemble your iPhone without replacing the seals.

Step 2 — Opening Procedure



- Heating the lower edge of the iPhone will help soften the adhesive securing the display, making it easier to open.
- Use a hairdryer or [prepare an iOpener](#) and apply it to the lower edge of the phone for about 90 seconds in order to soften up the adhesive underneath.

Step 3



- Apply a suction cup to the lower half of the front panel, just above the home button.
 - ⓘ Be sure the suction cup does not overlap with the home button, as this will prevent a seal from forming between the suction cup and front glass.
 - ⓘ If your display is badly cracked, [covering it with a layer of clear packing tape](#) may allow the suction cup to adhere. Alternatively, very strong tape may be used instead of the suction cup. If all else fails, you can superglue the suction cup to the broken screen.

Step 4



- Pull up on the suction cup with firm, constant pressure to create a slight gap between the front panel and rear case.
 - Insert an opening pick into the gap.
- i** The watertight adhesive holding the display in place is very strong; creating this initial gap takes a significant amount of force. If you're having a hard time opening a gap, apply more heat, and gently rock the screen up and down to weaken the adhesive until you create enough of a gap to insert your tool.

Step 5




- Slide the opening pick up the left edge of the phone starting at the lower edge and moving towards the volume control buttons and silent switch, breaking up the adhesive holding the display in place.
- Stop near the top left corner of the display.

! Do not try to pry the top edge of the display away from the rear case, as it is held in place by plastic clips that may break.

Step 6




- Re-insert your tool at the lower right corner of the iPhone, and slide it around the corner and up the right side of the phone to separate the adhesive.

 Don't insert the pick very far, or you may damage the display cables along this side of the iPhone. Insert it only a few millimeters, or about the width of the display bezel.

Step 7



- Gently pull up on the suction cup to lift up the bottom edge of the display.
 -  **Do not raise the display more than 15°** or you'll risk straining or tearing the ribbon cables connecting the display.
- Pull on the small nub on the suction cup to remove it from the front panel.

Step 8



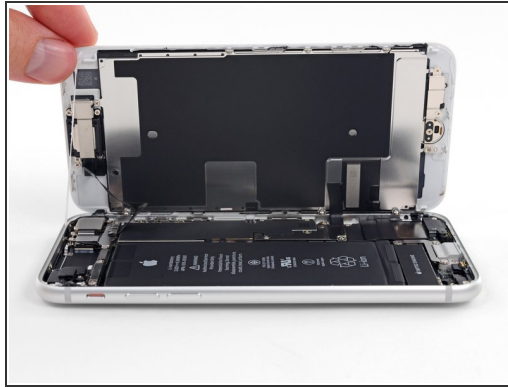
- Slide an opening pick underneath the display around the top left corner and along the top edge of the phone to loosen the last of the adhesive.


Step 9



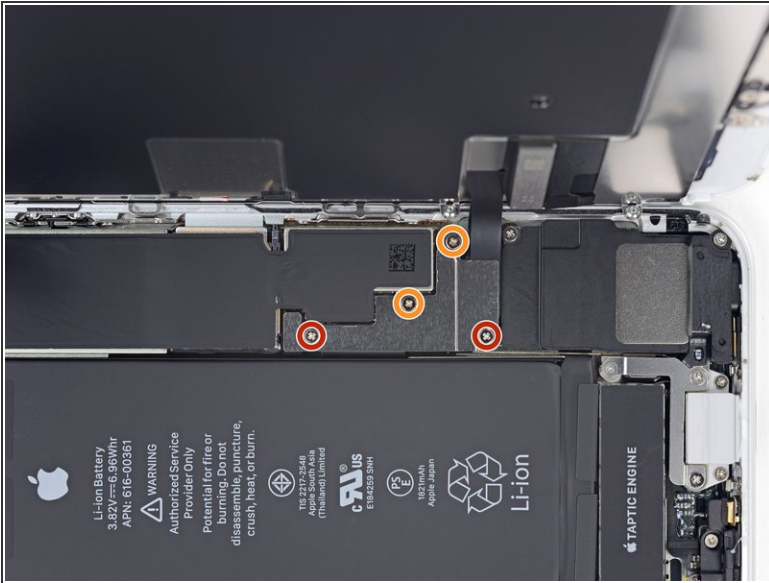
- Slide the display assembly slightly down (away from the top edge of the phone) to disengage the clips holding it to the rear case.

Step 10



- Open the iPhone by swinging the display up from the left side, like the back cover of a book.
 Don't try to fully separate the display yet, as several fragile ribbon cables still connect it to the iPhone's logic board.
- Lean the display against something to keep it propped up while you're working on the phone.

Step 11 — Battery Disconnection



- Remove four Phillips screws securing the lower display cable bracket to the logic board, of the following lengths:
 - Two 1.3 mm screws
 - Two 2.8 mm screws
- ☑ Throughout this guide, [keep careful track of your screws](#) so that each one goes back where it came from during reassembly. Installing a screw in the wrong place can cause permanent damage.
- Remove the bracket.

Step 12



- Use the point of a spudger to pry the battery connector out of its socket in the logic board.
- Bend the battery connector cable slightly away from the logic board to prevent it from accidentally making contact with the socket and providing power to the phone during your repair.

Step 13 — Display Assembly



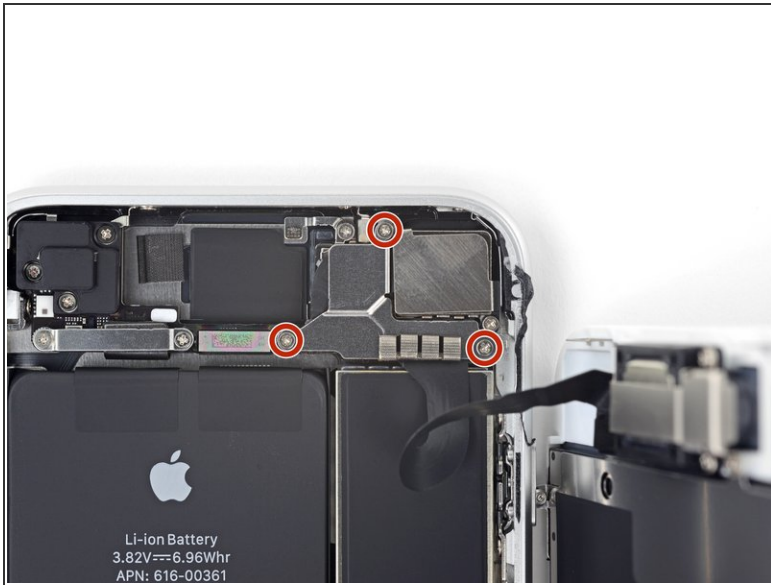
- Use the point of a spudger to pry the lower display connector out of its socket.
- ✦ To re-attach [press connectors](#) like this one, press down on one side until it clicks into place, then repeat on the other side. Do not press down on the middle. If the connector is even slightly misaligned, the connector can bend, causing permanent damage.

Step 14



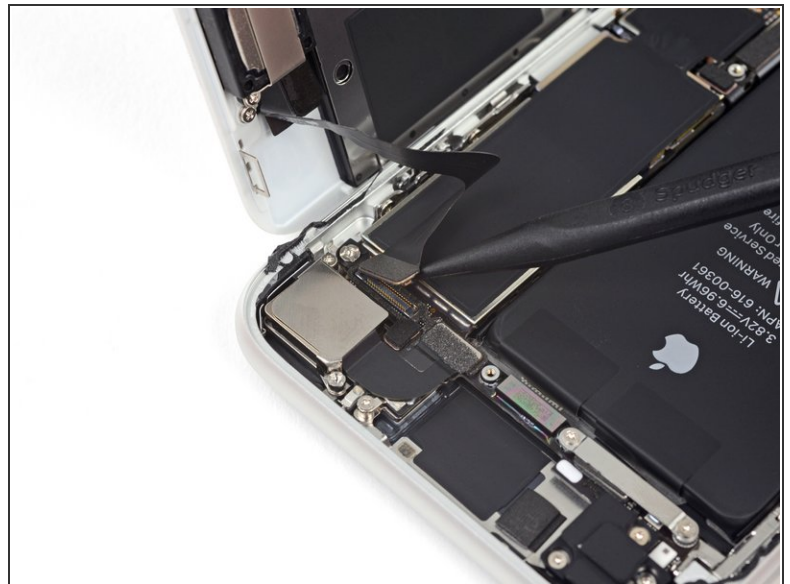
- Use the point of a spudger to disconnect the second lower display cable.

Step 15



- Remove the three 1.3 mm Phillips screws securing the bracket over the front panel sensor assembly connector.
- Remove the bracket.

Step 16



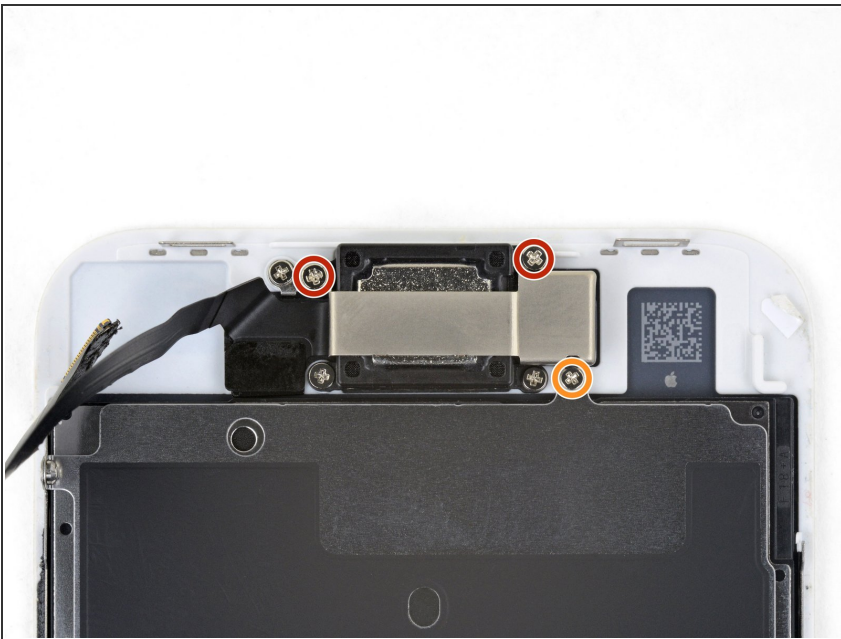
- Use the point of a spudger to disconnect the front panel sensor assembly connector.

Step 17



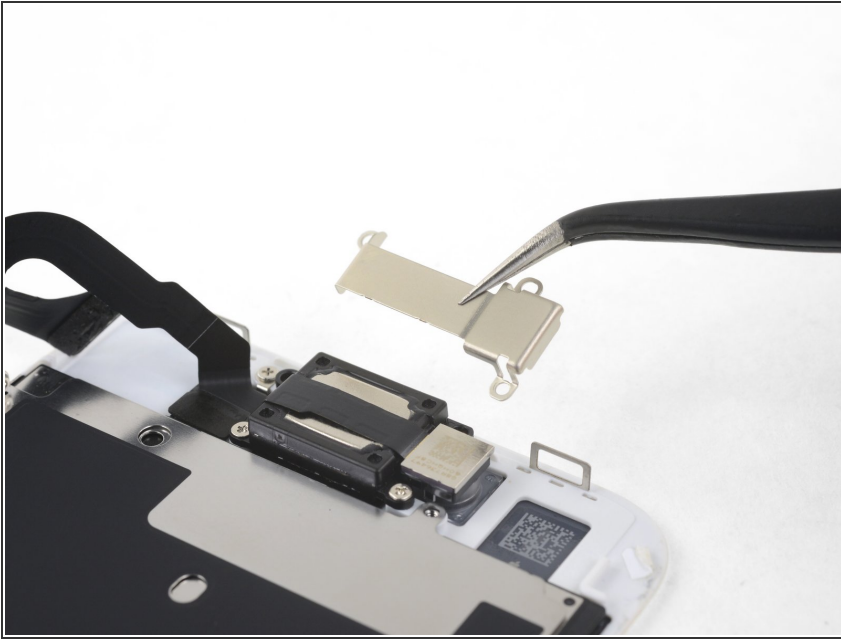
- Remove the display assembly.
- ★ During reassembly, pause here if you wish to [replace the adhesive around the edges of the display](#).

Step 18 — Earpiece Speaker



- Remove the three Phillips screws securing the earpiece bracket to the front panel:
 - Two 2.6 mm screws
 - One 1.8 mm screw

Step 19



- Remove the earpiece speaker bracket.

Step 20



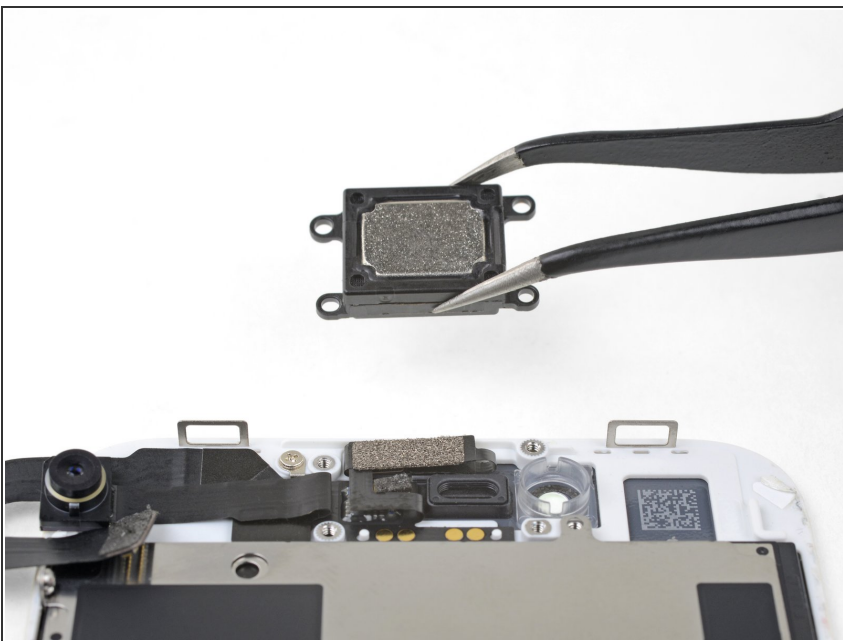
- Lift the front facing camera up out of its socket and swing it out of the way.

Step 21



- Remove the two Phillips screws securing the earpiece speaker to the front panel:
 - One 1.8 mm screw
 - One 2.3 mm screw

Step 22



- Remove the earpiece speaker.

Step 23 — Front Camera and Sensor Cable



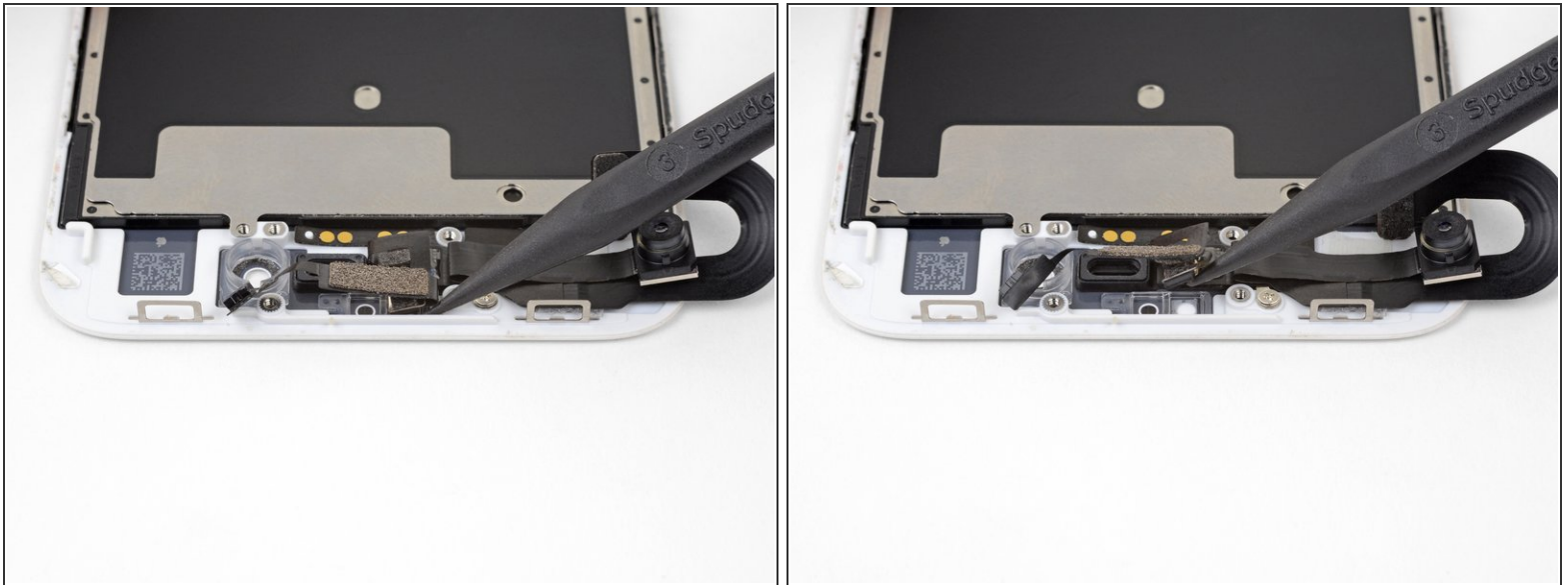
- [Heat an iOpener](#) and apply it to the upper edge of the display to soften the adhesive holding the front camera and sensor assembly in place.
- ⓘ Wait about two minutes before moving on to the next step to adequately soften the adhesive.

Step 24



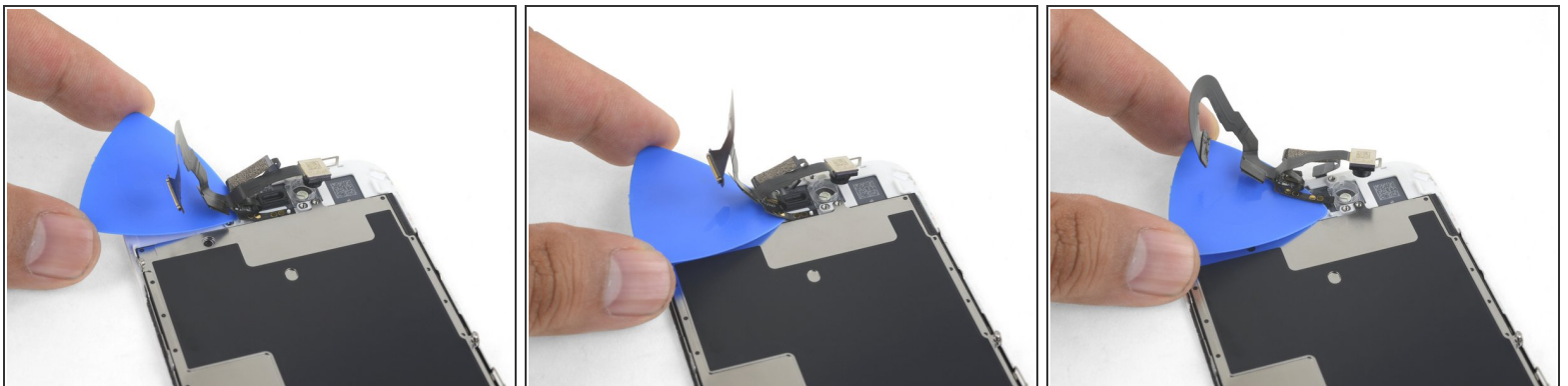
- Use the point of a spudger to gently pry the proximity sensor out of its recess on the front panel.
⚠ Try to get your tool all the way under the sensor to pry it away from the clear plastic beneath. If you pry only against the cable, the sensor may separate from the cable assembly and will need replacement. If you're replacing the sensor/cable assembly anyway, then it doesn't matter.

Step 25



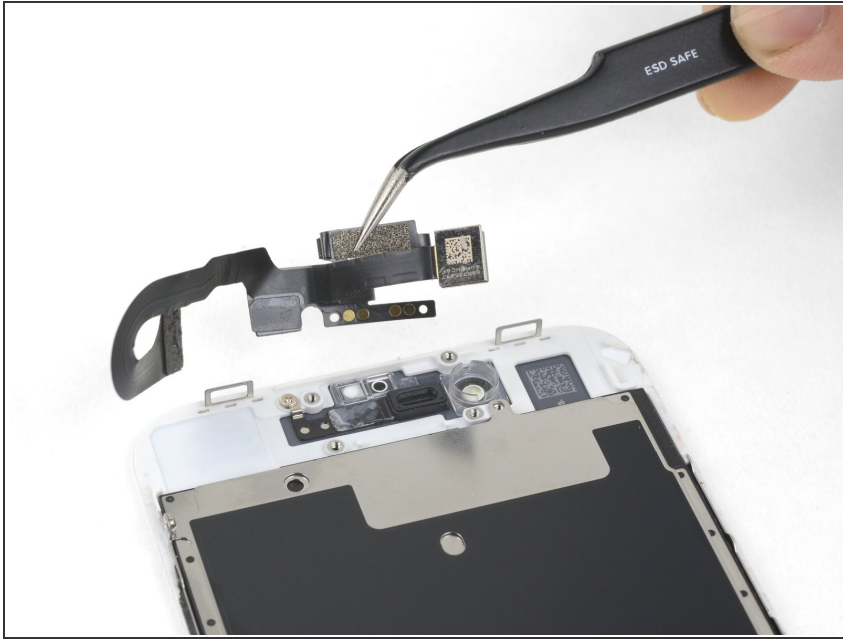
- Slide the tip of a spudger underneath the ambient light sensor flex cable, and lift the sensor out of its housing.

Step 26



- Slide an opening pick underneath front camera cable assembly, separating the adhesive holding the camera and sensor cable.

Step 27



- Remove the front camera and sensor cable.

Compare your new replacement part to the original part. You may need to transfer remaining components or remove adhesive backings from the new part before installing.

To reassemble your device, follow these instructions in reverse order.

Take your e-waste to an [R2 or e-Stewards certified recycler](#).

Repair didn't go as planned? Check out our [iPhone 8 Answers community](#) for troubleshooting help.