



iPhone 8 Plus Battery Replacement

Replace the battery in an iPhone 8 Plus.

Written By: Adam O'Camb



INTRODUCTION

Use this guide to revive your iPhone 8 Plus with a new battery. If your battery is swollen, [take appropriate precautions](#).

This guide instructs you to fully detach the display assembly; this is intended to prevent accidental damage to the display cables. If you feel comfortable removing the battery without putting undue strain on the display cables, you can skip the steps for detaching the display. Additionally, while it's possible to remove the adhesive strips securing the battery as soon as you open the phone, this guide recommends first removing the Taptic Engine. Doing so reduces the risk of breaking the lower adhesive strips accidentally, either by snagging them on the Taptic Engine, or by pulling the strips at too sharp of an angle.

For optimal performance, after completing this guide, [calibrate](#) your newly installed battery: Charge it to 100% and keep charging it for at least two more hours. Then use your iPhone until it shuts off due to low battery. Finally, charge it uninterrupted to 100%.

[video: <https://www.youtube.com/watch?v=OZMKua4LgHk>]



TOOLS:

- [Standoff Screwdriver for iPhones](#) (1)
- [P2 Pentalobe Screwdriver iPhone](#) (1)
- [iOpener](#) (1)
- [iSlack](#) (1)
- [Suction Handle](#) (1)
- [iFixit Opening Picks set of 6](#) (1)
- [iFixit Opening Tools](#) (1)
- [Phillips #000 Screwdriver](#) (1)
- [Tri-point Y000 Screwdriver Bit](#) (1)
- [Tweezers](#) (1)
- [Spudger](#) (1)



PARTS:

- [iPhone 8 Plus Replacement Battery](#) (1)
- [iPhone 8 Plus Battery Adhesive Strips](#) (1)
- [iPhone 8 Plus Display Assembly Adhesive](#) (1)
- [iPhone 8/8 Plus Bottom Screws](#) (1)

Step 1 — Pentalobe Screws



- ⚠ Before you begin, discharge your iPhone battery below 25%. A charged lithium-ion battery can catch fire and/or explode if accidentally punctured.
- Power off your iPhone before beginning disassembly.
- Remove the two 3.5 mm pentalobe screws from the bottom edge of the iPhone.
- ⓘ Opening the iPhone's display will compromise its waterproof seals. Have [replacement seals](#) ready before you proceed past this step, or take care to avoid liquid exposure if you reassemble your iPhone without replacing the seals.

Step 2 — Opening Procedure



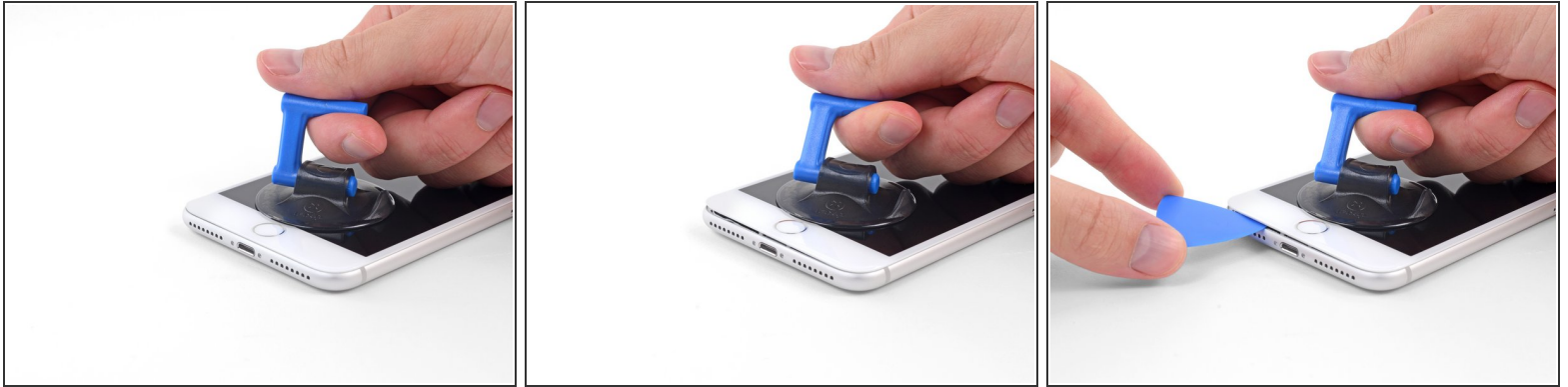
- ① Heating the lower edge of the iPhone will help soften the adhesive securing the display, making it easier to open.
- Use a hairdryer or [prepare an iOpener](#) and apply it to the lower edge of the iPhone for about 90 seconds in order to soften up the adhesive underneath.

Step 3



- Apply a suction cup to the lower half of the front panel, just above the home button.
- ① Be sure the suction cup does not overlap with the home button, as this will prevent a seal from forming between the suction cup and front glass.

Step 4



- Pull up on the suction cup with firm, constant pressure to create a slight gap between the front panel and rear case.
 - Insert an opening pick or other thin pry tool a few millimeters into the gap.
- i** The watertight adhesive holding the display in place is very strong; creating this initial gap takes a significant amount of force. If you're having a hard time opening a gap, apply more heat, and gently rock the screen up and down to weaken the adhesive until you create enough of a gap to insert your tool.

Step 5




- Slide your pick around the corner and up the left edge of the phone, moving towards the volume control buttons and silent switch, breaking up the adhesive holding the display in place.
- Stop near the top left corner of the display.

Step 6




- Re-insert your tool at the lower right corner of the iPhone, and slide it around the corner and up the right side of the phone to separate the adhesive.

 Don't insert the pick very far, or you may damage the display cables along this side of the iPhone. Insert it only a few millimeters, or about the width of the display bezel.

Step 7



- Gently pull up on the suction cup to lift up the bottom edge of the display.
-  **Do not raise the display more than 15°** or you'll risk straining or tearing the ribbon cables connecting the display.

Step 8



- Pull on the small nub on the suction cup to remove it from the front panel.

Step 9



- Slide an opening pick underneath the display along the top edge of the phone to loosen the last of the adhesive.

Step 10



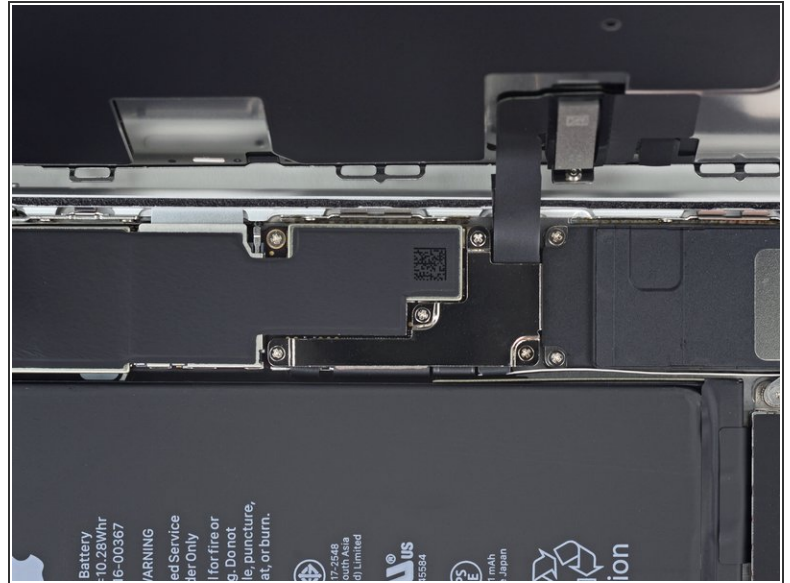
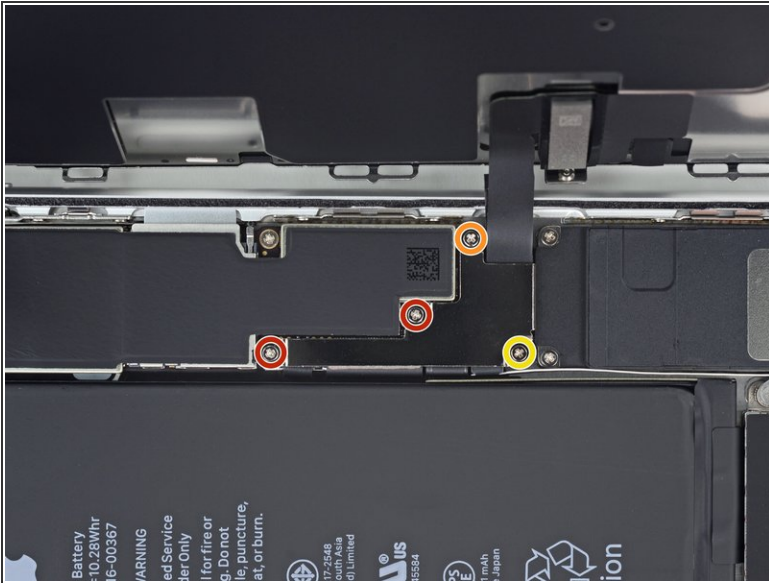
- Slide the display assembly slightly down (away from the top edge of the phone) to disengage the clips holding it to the rear case.

Step 11



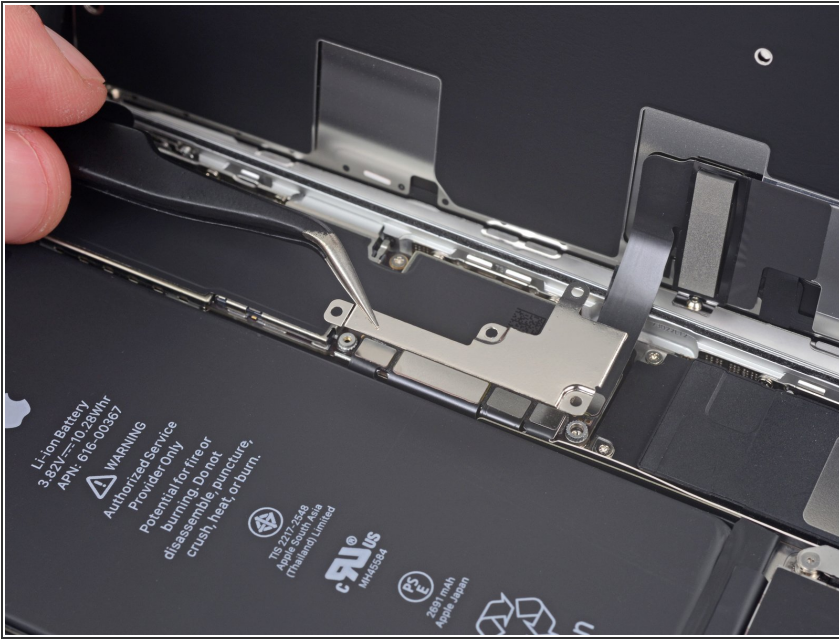
- Open the iPhone by swinging the display up from the left side, like the back cover of a book.
 - ⚠ Don't try to fully separate the display yet, as several fragile ribbon cables still connect it to the iPhone's logic board.
- Lean the display against something to keep it propped up while you're working on the phone.

Step 12 — Battery Disconnection



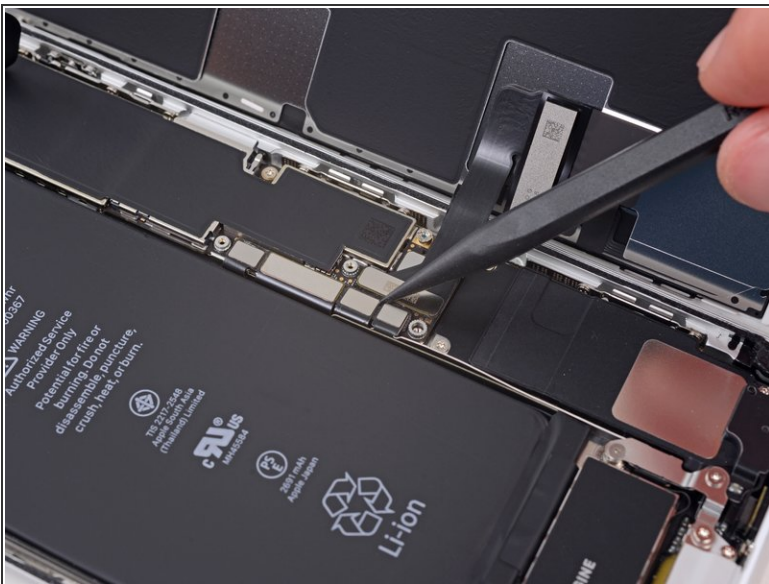
- Remove four Phillips (JIS) screws securing the lower display cable bracket to the logic board, of the following lengths:
 - Two 1.3 mm screws
 - One 1.4 mm screw
 - One 2.7 mm screw
- ✦ Throughout this guide, [keep careful track of your screws](#) so that each one goes back where it came from during reassembly. Installing a screw in the wrong place can cause permanent damage.

Step 13



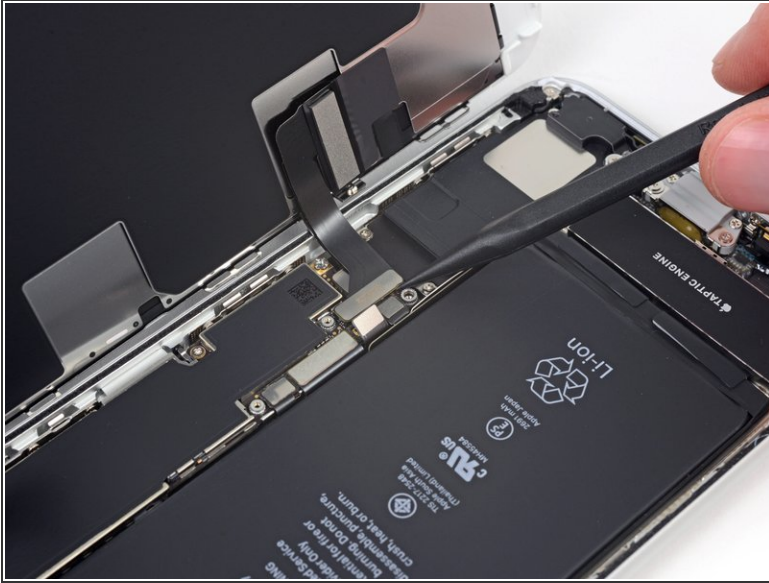
- Remove the lower display cable bracket.

Step 14



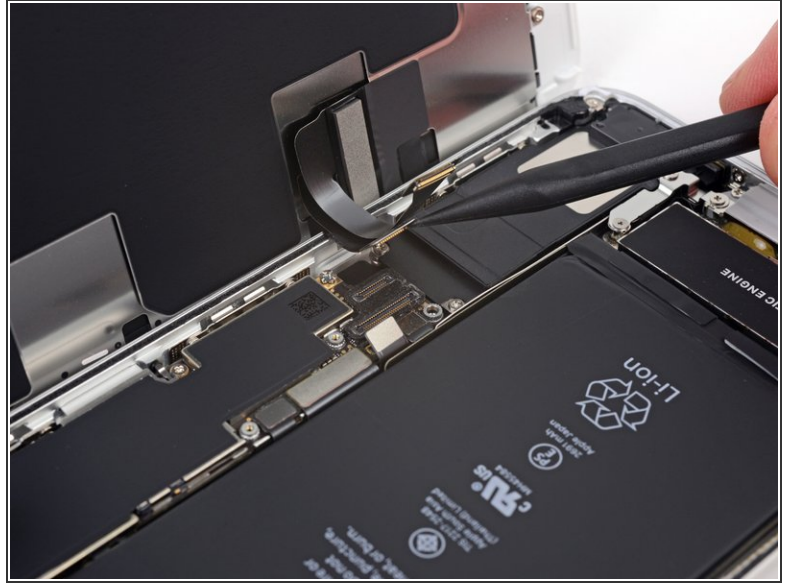
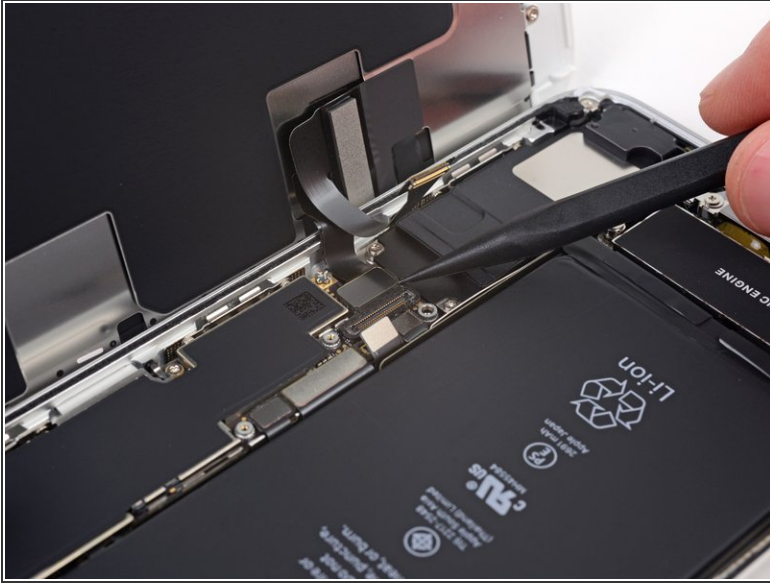
- Use the point of a spudger to pry the battery connector up from its socket on the logic board.
- Bend the connector cable up slightly to prevent it from accidentally making contact with the socket and providing power to the phone during your repair.

Step 15 — Display Assembly



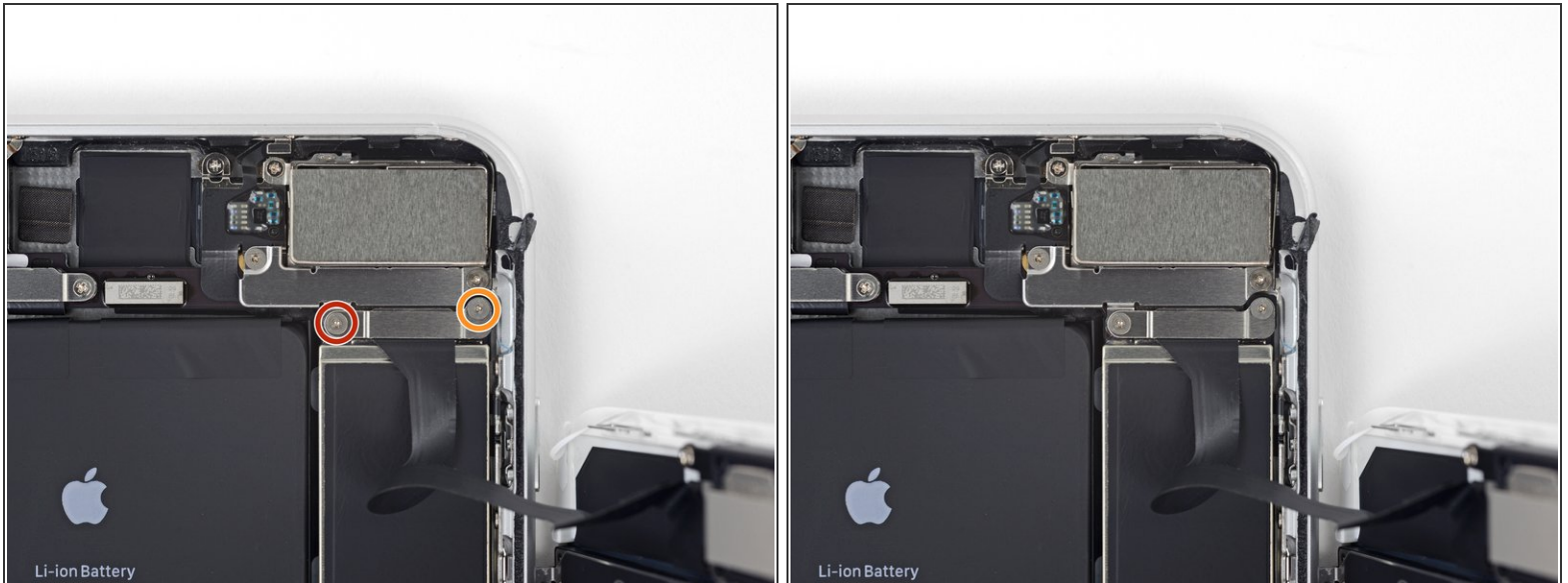
- Use the tip of a spudger or a fingernail to disconnect the large lower display connector by prying it straight up from its socket.
- ☑ To re-attach press connectors like this one, press down on one side until it clicks into place, then repeat on the other side. Do not press down on the middle. If the connector is even slightly misaligned, the connector can bend, causing permanent damage.

Step 16



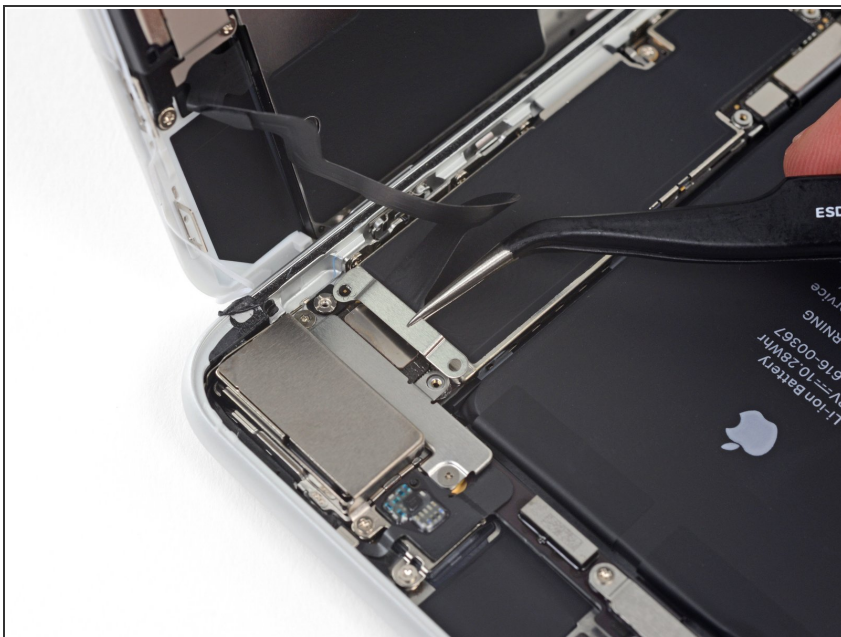
- Disconnect the second lower display cable connector, directly behind the one you disconnected in the previous step.

Step 17



- Remove the two tri-point Y000 screws securing the bracket over the front panel sensor assembly connector:
 - One 1.0 mm screw
 - One 1.2 mm screw

Step 18



- Remove the bracket covering the front panel sensor assembly connector.

Step 19



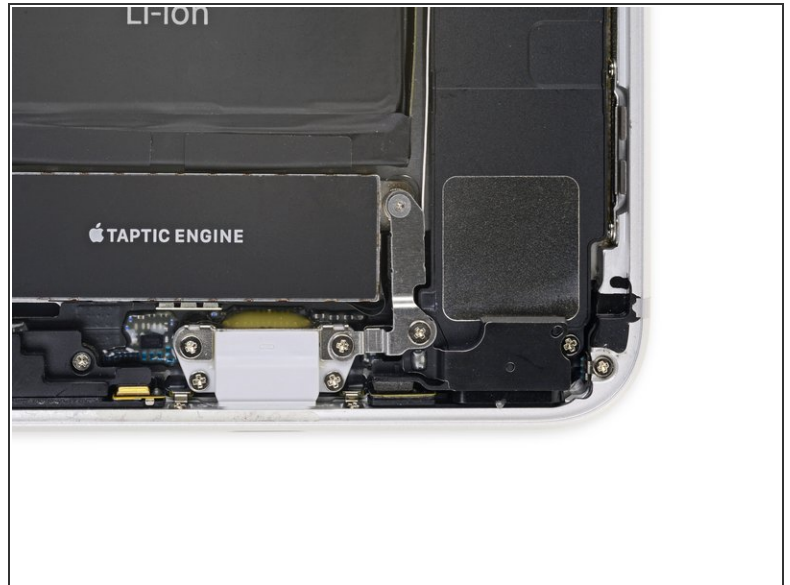
- Use the tip of a spudger or a fingernail to disconnect the front panel sensor assembly connector from its socket.

Step 20



- Remove the display assembly.
- ★ During reassembly, pause here if you wish to [replace the adhesive around the edges of the display](#).

Step 21 — Wi-Fi Diversity Antenna



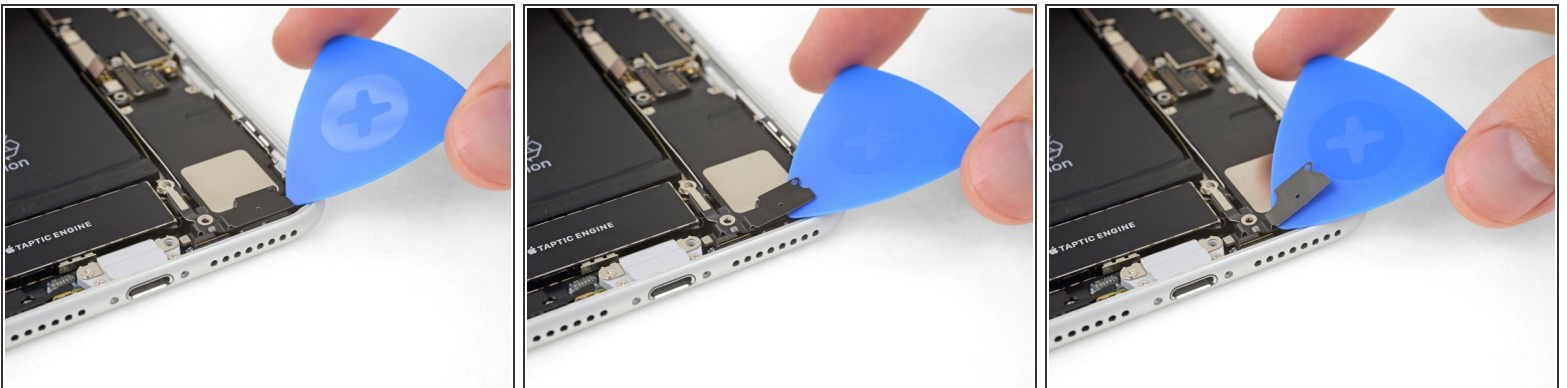
- Remove the three screws securing the L-shaped bracket next to the Taptic Engine:
 - One 1.3 mm Y000 screw
 - One 2.6 mm Phillips screw
 - One 3.5 mm Phillips screw

Step 22



- Remove the bracket.

Step 23



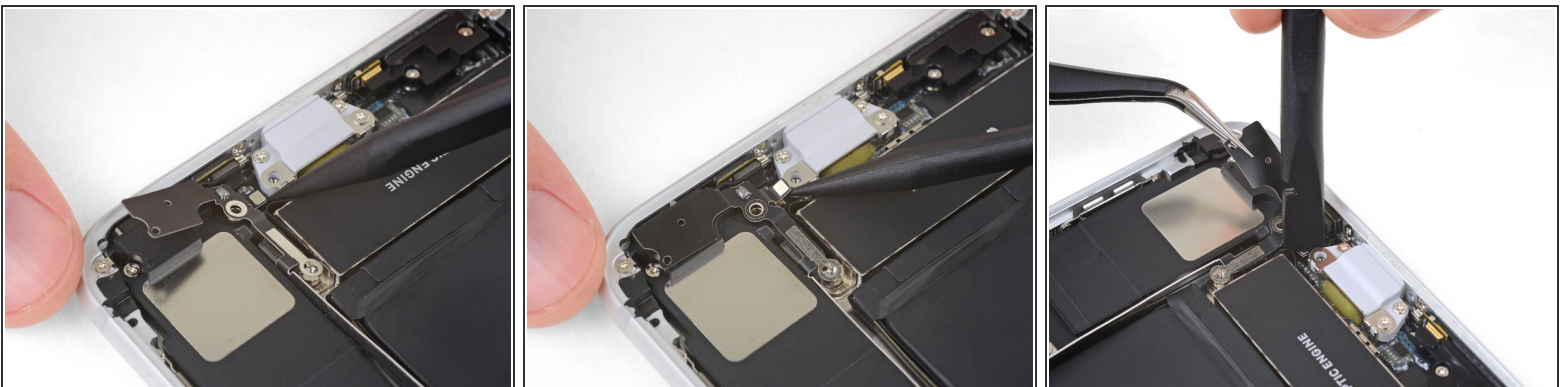
- Use an opening pick to gently separate the adhered portion of the antenna flex cable from the top surface of the speaker.
- ⓘ This portion of the flex cable is lightly adhered in place. If necessary, apply a little heat from an iOpener or hair dryer to soften the adhesive. This makes it easier to separate (and re-adhere) the flex cable safely.

Step 24



- Use the point of a spudger to pry up and disconnect the antenna flex cable from the logic board.

Step 25



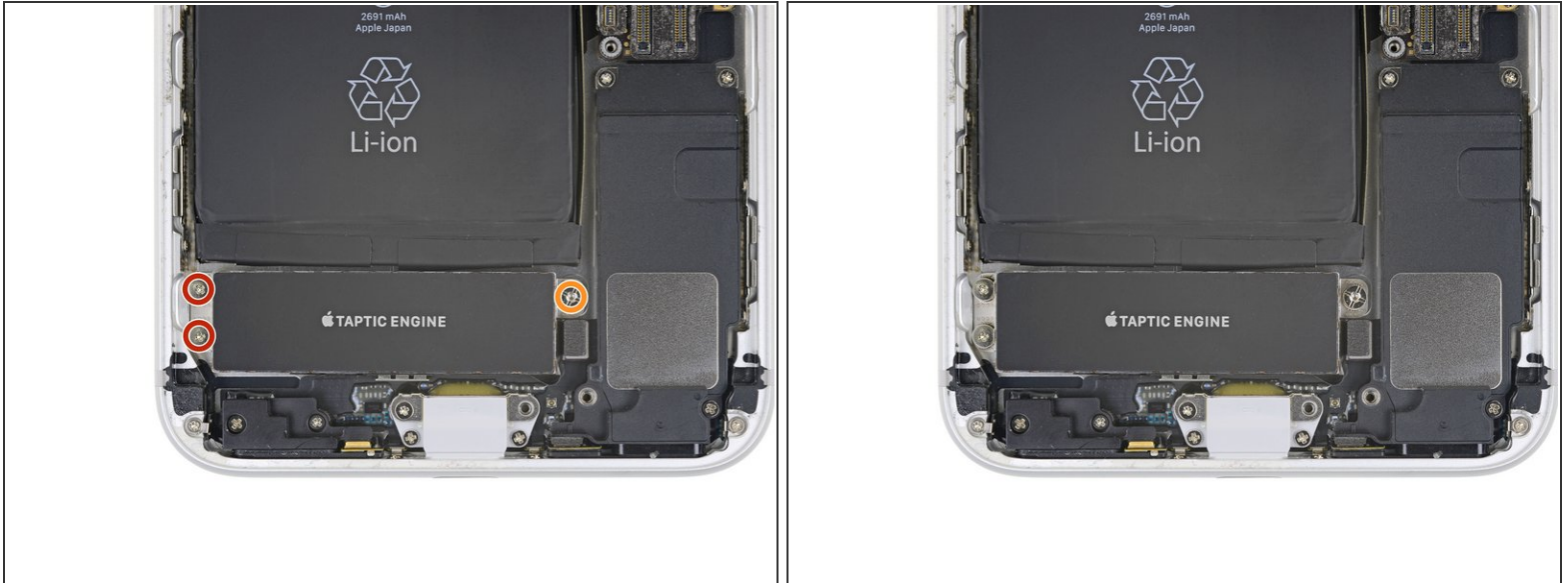
- Use the point of your spudger to pry up and disconnect the other end of the antenna flex cable from its socket, next to the Lightning Port.
- ✪ Reconnecting this cable can be tricky. Make it easier by using your tweezers to hold the flex cable so the connector aligns with its socket. Then, gently press down on the connector with the flat of your spudger until it clicks into place.

Step 26



- Remove the Wi-Fi diversity antenna.

Step 27 — Taptic Engine



- Remove the three screws securing the Taptic Engine:
 - Two 1.5 mm Phillips screws
 - One 2.4 mm standoff screw
 - ⓘ Standoff screws are best removed using an [iPhone Standoff Screwdriver Bit](#) and [driver handle](#).
 - ⚠ In a pinch, a small flathead screwdriver will do the job—but use extra caution to ensure it doesn't slip and damage surrounding components.

Step 28



- Use the point of your spudger to pry up and disconnect the Taptic Engine flex cable.

Step 29



- Remove the Taptic Engine.

Step 30 — Battery



- i** The iPhone 8 Plus's battery is secured by four pieces of stretch-release adhesive—two at the top, and two at the bottom.
- Each piece of adhesive has a black pull-tab at the end, which is lightly adhered to the front surface of the battery.

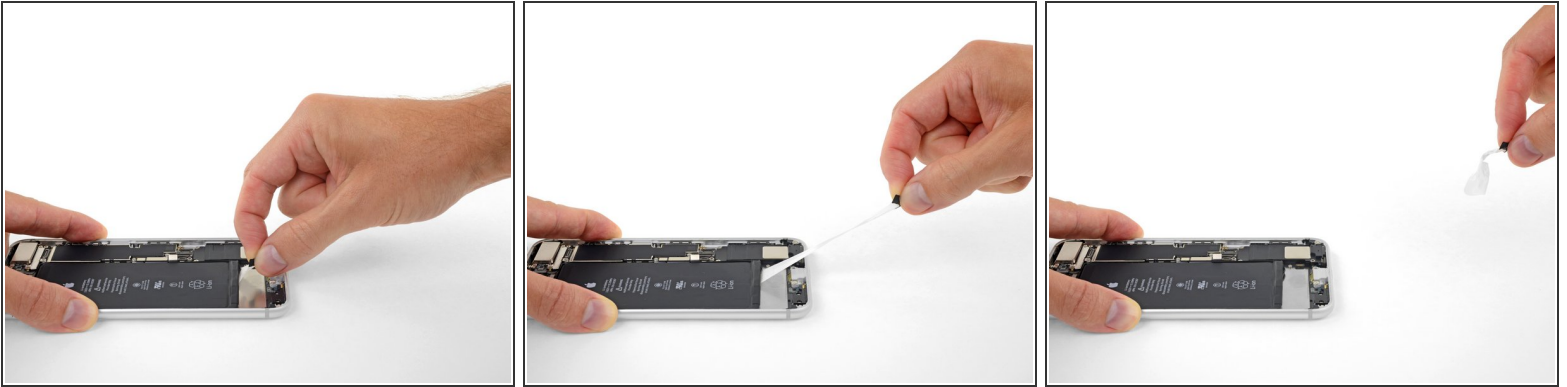
Step 31



- Peel back the first battery adhesive tab from the bottom right edge of the battery.

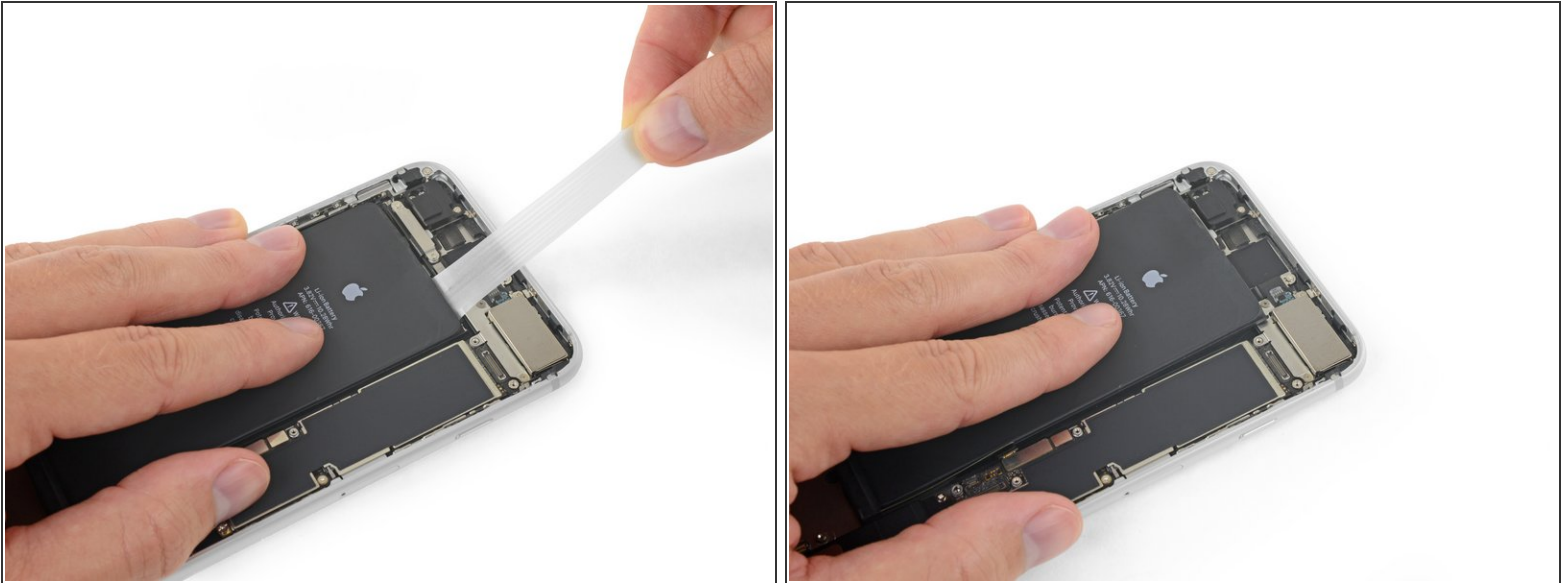
⚠ If possible, use your fingernails or blunt tweezers. Be careful not to poke the battery with any sharp tools.

Step 32




- ⚠ Try to keep the adhesive strips flat and unwrinkled during this procedure; twisted or wrinkled strips will stick together and break instead of pulling out cleanly.
- ⚠ Additionally, do not press down on the battery as you pull the strips. Pressing on the battery creates pressure points that can snag and break the adhesive.
- **Slowly** pull one battery adhesive tab away from the battery, towards the bottom of the iPhone.
- Pull steadily, maintaining constant tension on the strip until it slips out from between the battery and the rear case. For best results, **pull the strip at as low an angle as possible**, without snagging it on any of the iPhone's other components.
- ⓘ The strip will stretch to many times its original length. Continue pulling and re-grab the strip near the battery if necessary.
- If the battery adhesive tabs break during the removal process, use your fingers or blunt tweezers to retrieve the remaining length of adhesive, and continue pulling.
- ⚠ If any of the adhesive strips break underneath the battery and cannot be retrieved, try to remove the remaining strips, and then proceed as instructed below.


Step 33



- Repeat the above steps to remove the remaining three adhesive strips.

 Be sure to hold onto the battery as you remove the final strip, or it may fling out of the iPhone unexpectedly.

- If you removed all of the adhesive strips successfully, skip the next step.

 If any of the adhesive strips broke off underneath the battery and could not be retrieved, **continue with the next step below.**

Step 34



- If any of the adhesive strips broke off and the battery remains stuck to the rear case, [prepare an iOpener](#) or use a hair dryer to heat the rear case directly behind the battery. This will help soften the adhesive.
- ⚠ Heat the iPhone until the rear case is slightly too hot to comfortably touch. Don't overheat the iPhone, or you may accidentally ignite the battery.
- Flip the iPhone back over and thread a strong piece of string (such as dental floss or a length of thin guitar string) underneath the battery.
- Pull the string from side to side in a sawing motion all along the length of the battery to separate the adhesive. **Do not deform or damage the battery.**
 - To protect your fingers, wear gloves or wrap the string ends around a tool (such as the two screwdriver handles shown in the image).
- ⚠ If you choose to use pry tools to lift the battery out of the iPhone, use extreme caution or you may damage the ribbon cables or the wireless charging coil directly underneath the battery.

Step 35



- Remove the battery from the iPhone.
- ☑ If your replacement battery came in a plastic sleeve, slide off and remove the sleeve before installation.
- If your new battery doesn't have adhesive preinstalled, refer to [this guide](#) to replace the adhesive strips.
- Perform a [force restart](#) after reassembly. This can prevent several issues and simplify troubleshooting.

Compare your new replacement part to the original part—you may need to transfer remaining components or remove adhesive backings from the new part before installing.

To reassemble your device, follow the above steps in reverse order.

Take your e-waste to an [R2 or e-Stewards certified recycler](#).

Repair didn't go as planned? Check out our [Answers community](#) for troubleshooting help.