



iPhone 8 Plus Screen Replacement

Fix a cracked screen by replacing it in your iPhone 8 Plus, while keeping the original Home/Touch ID sensor.

Written By: Jeff Suovanen



INTRODUCTION

Learn how to replace your iPhone 8 Plus screen. This part comes with the front facing camera, earpiece speaker, and EMI shield already installed, making for an easier repair.

All you need to do is remove the old screen and transfer the home button to the new screen, in order for Touch ID to function.

Note: If your iPhone's auto brightness feature does not work properly after your screen repair, make sure your iPhone is updated to [iOS 12](#). True Tone functionality is disabled after a screen replacement, even when using an original Apple screen.



TOOLS:

- [Phillips #000 Screwdriver](#) (1)
- [P2 Pentalobe Screwdriver iPhone](#) (1)
- [iOpener](#) (1)
- [Suction Handle](#) (1)
- [iFixit Opening Picks set of 6](#) (1)
- [Spudger](#) (1)
- [Tri-point Y000 Screwdriver Bit](#) (1)
- [Tweezers](#) (1)
- [iFixit Opening Tools](#) (1)





PARTS:

- [iPhone 8 Plus Screen](#) (1)
- [iPhone 8 Plus Lower Display Cable Bracket](#) (1)
- [iPhone 8 Plus Display Assembly Adhesive](#) (1)
- [NuGlas Tempered Glass Screen Protector for iPhone 7 Plus/8 Plus](#) (1)

Step 1 — Pentalobe Screws



-  Before you begin, discharge your iPhone battery below 25%. A charged lithium-ion battery can catch fire and/or explode if accidentally punctured.
- Power off your iPhone before beginning disassembly.
- Remove the two 3.5 mm pentalobe screws from the bottom edge of the iPhone.
-  Opening the iPhone's display will compromise its waterproof seals. Have [replacement seals](#) ready before you proceed past this step, or take care to avoid liquid exposure if you reassemble your iPhone without replacing the seals.

Step 2 — Taping Over The Display



- If your display glass is cracked, keep further breakage contained and prevent bodily harm during your repair by taping over the glass.
 - Lay overlapping strips of clear packing tape over the iPhone's display until the whole face is covered.
 - ⓘ This will keep glass shards contained and provide structural integrity when prying and lifting the display.
- ⚠ Wear safety glasses to protect your eyes from any glass shaken free during the repair.
- If the broken glass makes it difficult to get a suction cup to stick in the next few steps, try folding a strong piece of tape (such as duct tape) into a handle and lifting the display with that instead.

Step 3 — Opening Procedure



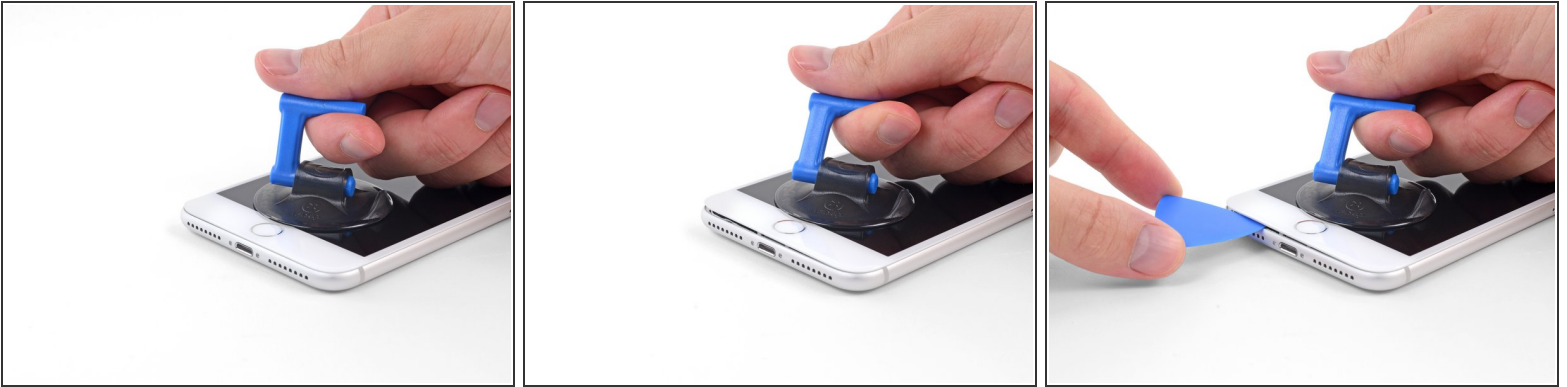
- ① Heating the lower edge of the iPhone will help soften the adhesive securing the display, making it easier to open.
- Use a hairdryer or [prepare an iOpener](#) and apply it to the lower edge of the iPhone for about 90 seconds in order to soften up the adhesive underneath.

Step 4



- Apply a suction cup to the lower half of the front panel, just above the home button.
 - ⓘ Be sure the suction cup does not overlap with the home button, as this will prevent a seal from forming between the suction cup and front glass.
 - ⓘ If your display is badly cracked, [covering it with a layer of clear packing tape](#) may allow the suction cup to adhere. Alternatively, very strong tape may be used instead of the suction cup. If all else fails, you can superglue the suction cup to the broken screen.

Step 5



- Pull up on the suction cup with firm, constant pressure to create a slight gap between the front panel and rear case.
 - Insert an opening pick or other thin pry tool a few millimeters into the gap.
- i** The watertight adhesive holding the display in place is very strong; creating this initial gap takes a significant amount of force. If you're having a hard time opening a gap, apply more heat, and gently rock the screen up and down to weaken the adhesive until you create enough of a gap to insert your tool.

Step 6




- Slide your pick around the corner and up the left edge of the phone, moving towards the volume control buttons and silent switch, breaking up the adhesive holding the display in place.
- Stop near the top left corner of the display.

Step 7




- Re-insert your tool at the lower right corner of the iPhone, and slide it around the corner and up the right side of the phone to separate the adhesive.

 Don't insert the pick very far, or you may damage the display cables along this side of the iPhone. Insert it only a few millimeters, or about the width of the display bezel.

Step 8



- Gently pull up on the suction cup to lift up the bottom edge of the display.
-  **Do not raise the display more than 15°** or you'll risk straining or tearing the ribbon cables connecting the display.

Step 9



- Pull on the small nub on the suction cup to remove it from the front panel.

Step 10



- Slide an opening pick underneath the display along the top edge of the phone to loosen the last of the adhesive.

Step 11



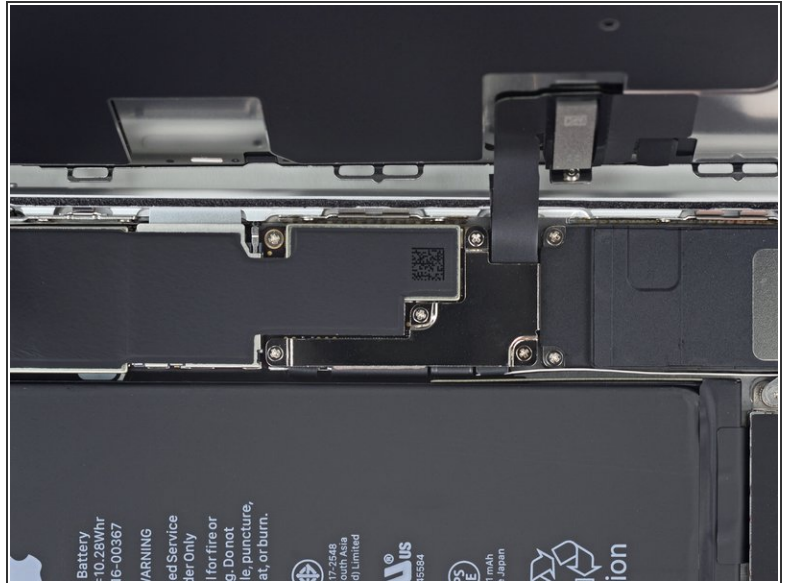
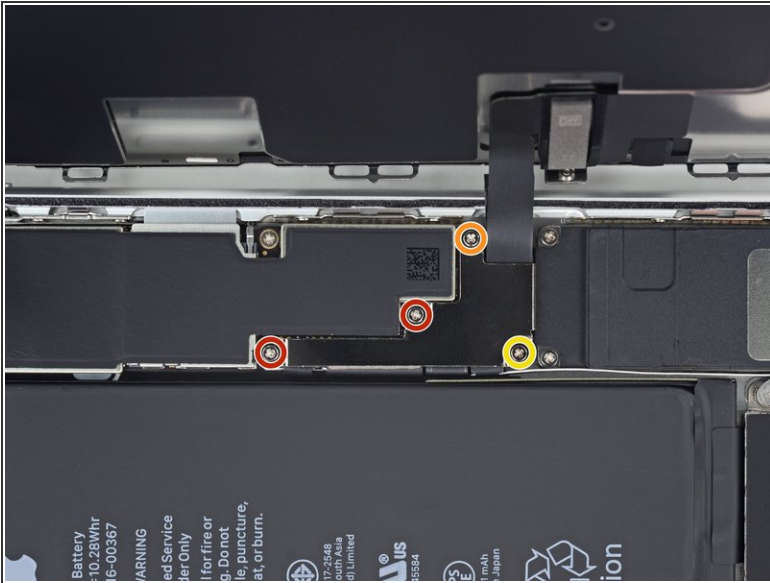
- Slide the display assembly slightly down (away from the top edge of the phone) to disengage the clips holding it to the rear case.

Step 12



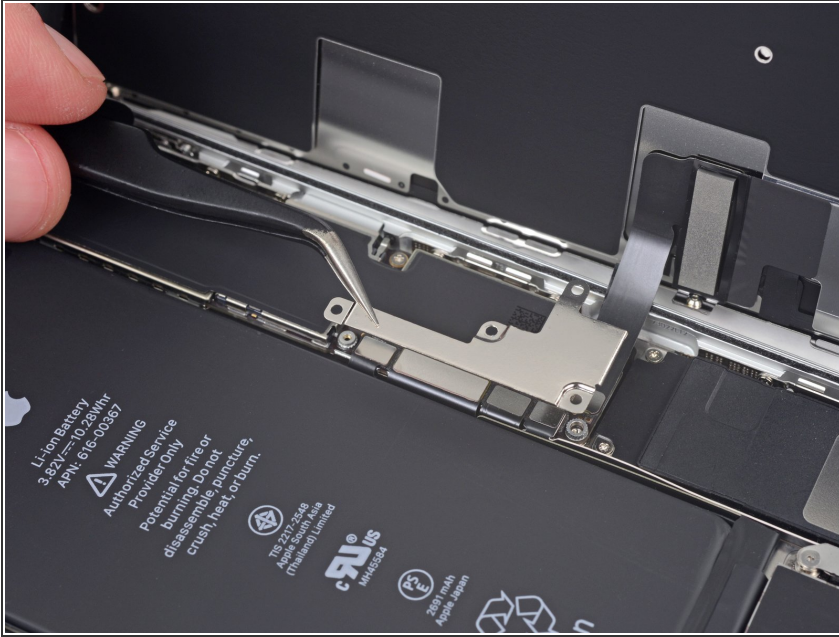
- Open the iPhone by swinging the display up from the left side, like the back cover of a book.
 - ⚠ Don't try to fully separate the display yet, as several fragile ribbon cables still connect it to the iPhone's logic board.
- Lean the display against something to keep it propped up while you're working on the phone.

Step 13 — Battery Disconnection



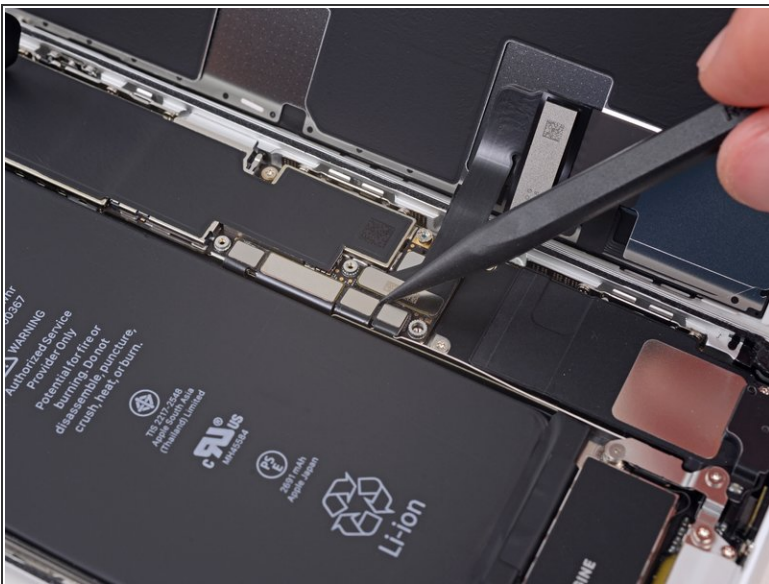
- Remove four Phillips (JIS) screws securing the lower display cable bracket to the logic board, of the following lengths:
 - Two 1.3 mm screws
 - One 1.4 mm screw
 - One 2.7 mm screw
- ★ Throughout this guide, [keep careful track of your screws](#) so that each one goes back where it came from during reassembly. Installing a screw in the wrong place can cause permanent damage.

Step 14



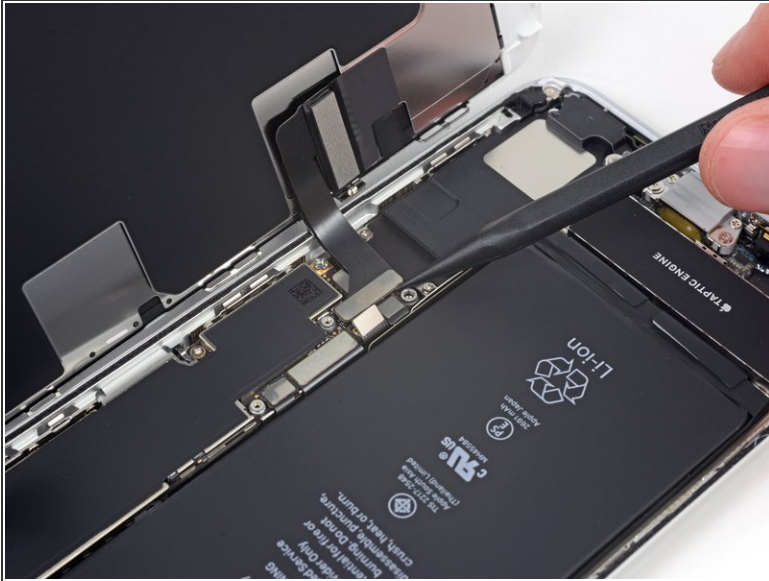
- Remove the lower display cable bracket.

Step 15



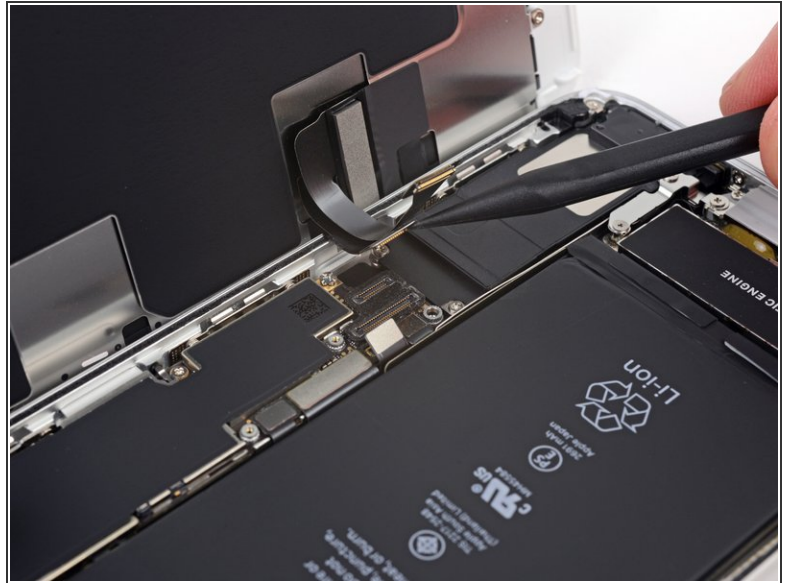
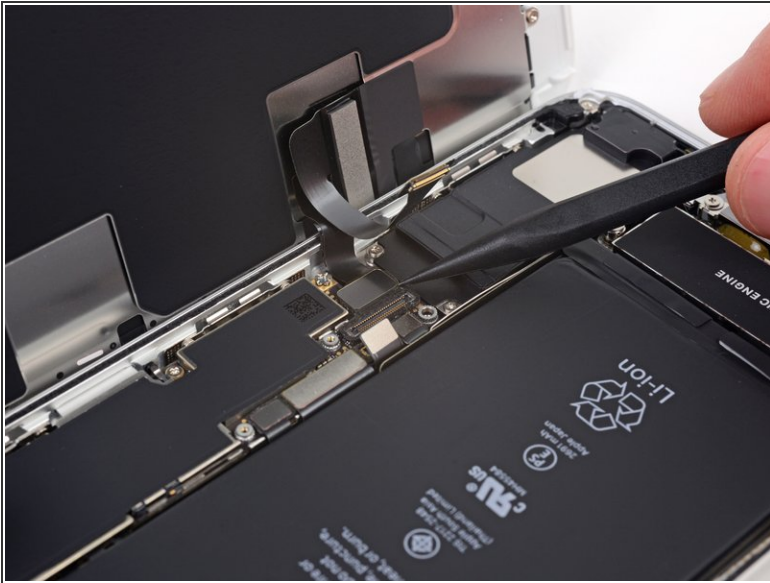
- Use the point of a spudger to pry the battery connector up from its socket on the logic board.
- Bend the connector cable up slightly to prevent it from accidentally making contact with the socket and providing power to the phone during your repair.

Step 16 — Display Assembly



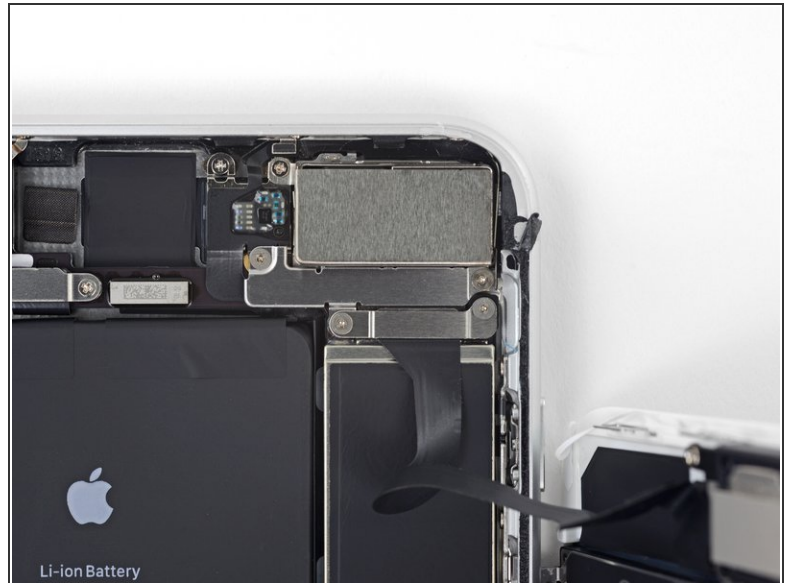
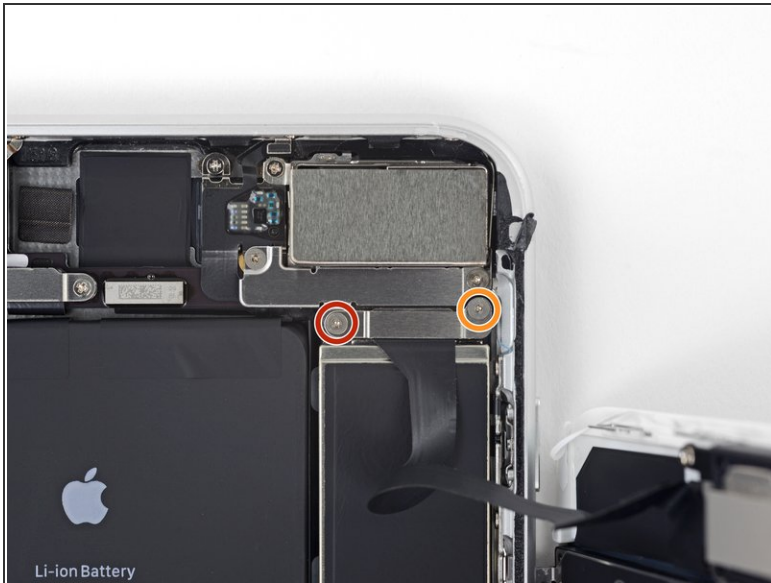
- Use the tip of a spudger or a fingernail to disconnect the large lower display connector by prying it straight up from its socket.
- ✦ To re-attach press connectors like this one, press down on one side until it clicks into place, then repeat on the other side. Do not press down on the middle. If the connector is even slightly misaligned, the connector can bend, causing permanent damage.

Step 17



- Disconnect the second lower display cable connector, directly behind the one you disconnected in the previous step.

Step 18



- Remove the two tri-point Y000 screws securing the bracket over the front panel sensor assembly connector:
 - One 1.0 mm screw
 - One 1.2 mm screw

Step 19



- Remove the bracket covering the front panel sensor assembly connector.

Step 20



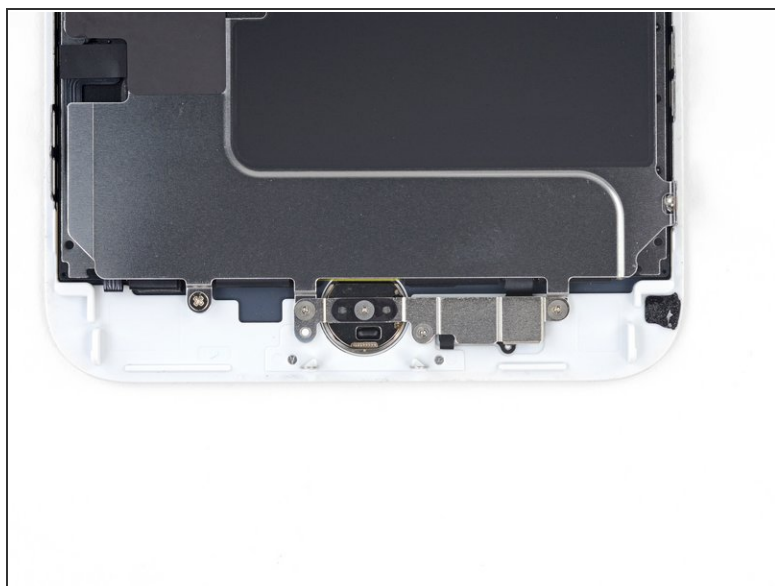
- Use the tip of a spudger or a fingernail to disconnect the front panel sensor assembly connector from its socket.

Step 21



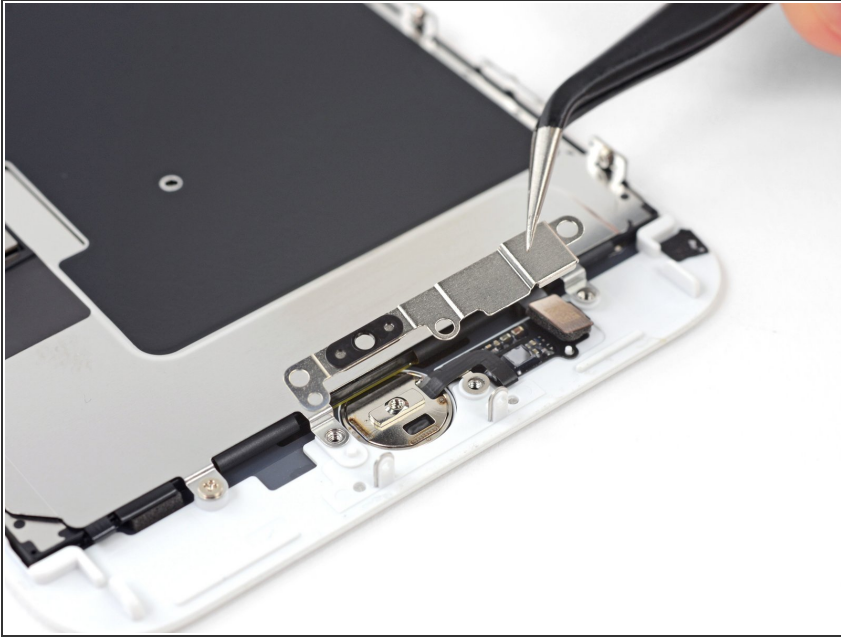
- Remove the display assembly.
- ★ During reassembly, pause here if you wish to [replace the adhesive around the edges of the display](#).

Step 22 — Home/Touch ID Sensor



- Remove the four Y000 screws securing the bracket over the home/Touch ID sensor:
 - One 1.2 mm screw
 - Three 1.3 mm screws
- ☑ During reassembly, be careful not to overtighten these screws, or your home button may not work.

Step 23



- Remove the bracket that secures the home/Touch ID sensor.

Step 24



- Pry under the left edge of the home button cable connector to disconnect it from its socket.
 - ⚠ If the entire connector begins to flip up without separating, press down on the cable at the top edge of the connector with the flat of your spudger, while simultaneously prying up the left edge of the connector. Be very careful not to damage the cable or connector, or you will permanently disable the sensor.

Step 25



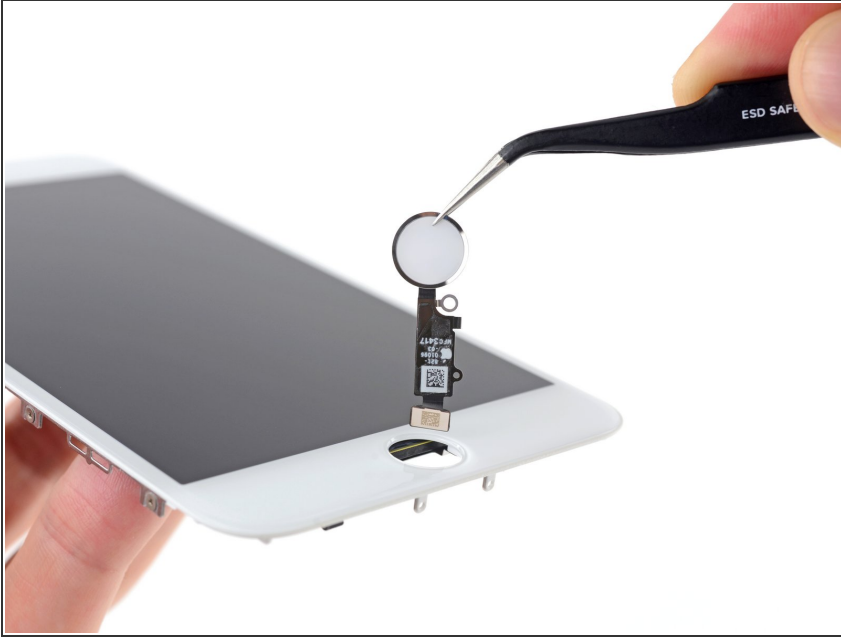
- ⓘ Heating the area around the home/Touch ID sensor will help soften the adhesive holding its delicate cable in place, making it easier to remove safely.
- Flip the display assembly over. Use a hairdryer or [prepare an iOpener](#) and apply it to the lower edge of the display for about 90 seconds in order to soften up the adhesive underneath.
- ⚠ Don't overheat the display. It should be slightly too hot to touch comfortably.

Step 26



- Use an opening pick to gently separate the adhesive holding the home/Touch ID sensor cable to the back side of the display panel.

Step 27



- Remove the home/Touch ID sensor assembly by lifting it through the front side of the display.
- ★ To reinstall, first feed the cable through the hole in the front of the display as shown.
- ★ Your replacement part may come with [extra Y000 screws](#) already installed near the Home Button. Remove the unnecessary screws so that you can reinstall the home button bracket.

Compare your new replacement part to the original part—you may need to transfer remaining components or remove adhesive backings from the new part before installing.

To reassemble your device, follow the above steps in reverse order.

Take your e-waste to an [R2 or e-Stewards certified recycler](#).

Repair didn't go as planned? Check out our [Answers community](#) for troubleshooting help.