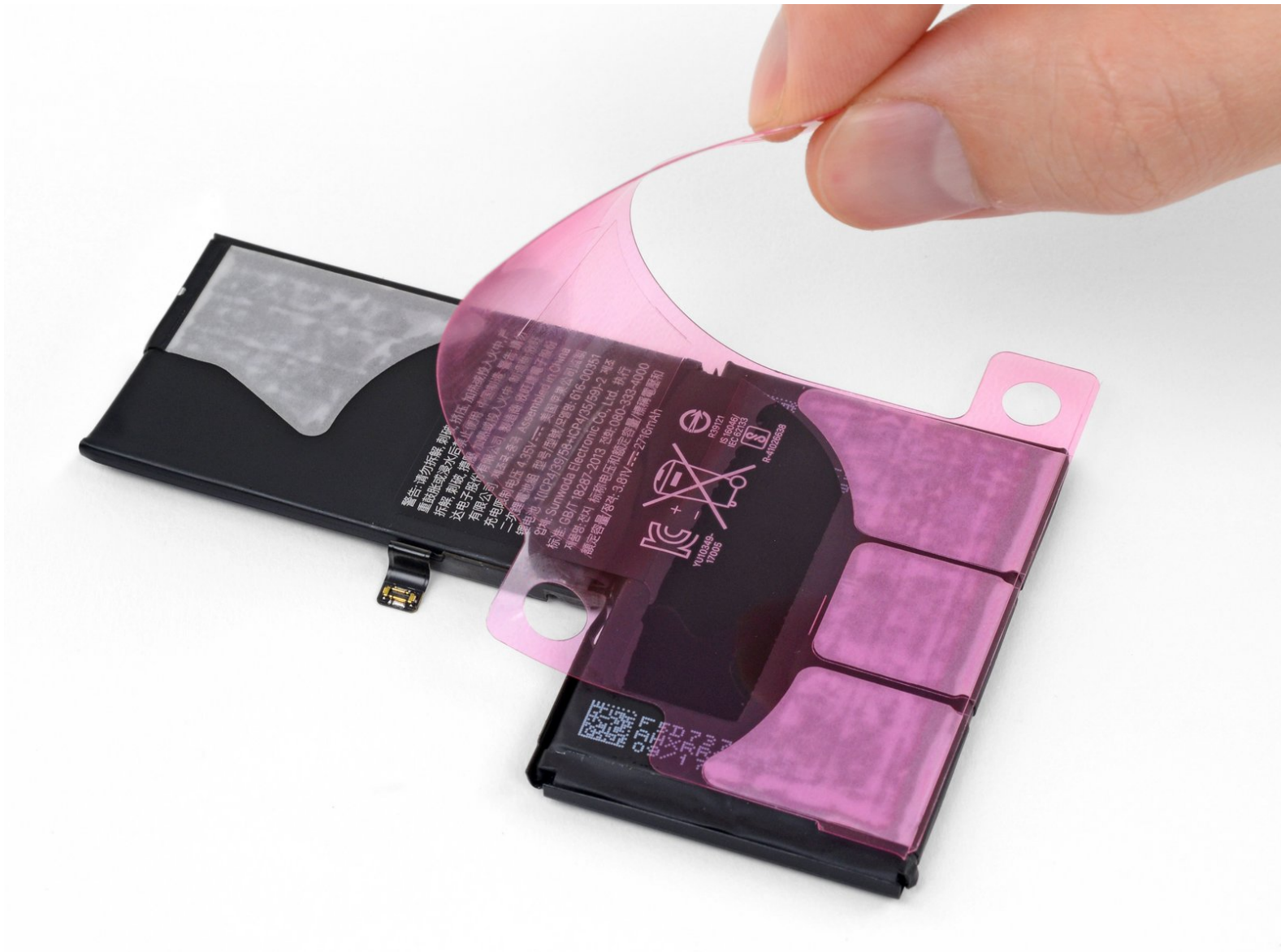




iPhone X, XS, and XS Max Battery Adhesive Strips Replacement

Replace the adhesive strips that secure the L-shaped batteries in the iPhone X, XS, and XS Max.

Written By: Jeff Suovanen



INTRODUCTION

Use this guide to correctly apply replacement battery adhesive strips for “L-shaped” iPhone batteries, including the dual-cell batteries in the iPhone X and XS Max, and the single-cell battery in the iPhone XS. Anytime you remove the battery, these strips must be replaced. The strips are easily damaged if not applied correctly, so you may want to have a spare set of strips on hand when following this guide for the first time.

These adhesive strips are different from those in prior-generation iPhones due to the presence of the wireless charging coil. The coil lies directly underneath the battery, which is secured with four adhesive strips that are contoured around the coil to avoid damaging it.

Before you begin, you should have removed the battery by following a guide like the ones linked below:

- [iPhone X Battery Replacement](#)
- [iPhone XS Battery Replacement](#)
- [iPhone XS Max Battery Replacement](#)

To replace the battery adhesive strips in a different model iPhone, use one of the following guides:

- [iPhone 5s, 5c, and SE Battery Adhesives Strips Replacement](#)
- [iPhone 6, 6 Plus, 6s, 6s Plus, 7, and 7 Plus Battery Adhesive Strips Replacement](#)
- [iPhone 8, 8 Plus, and XR Battery Adhesive Strips Replacement](#)



PARTS:

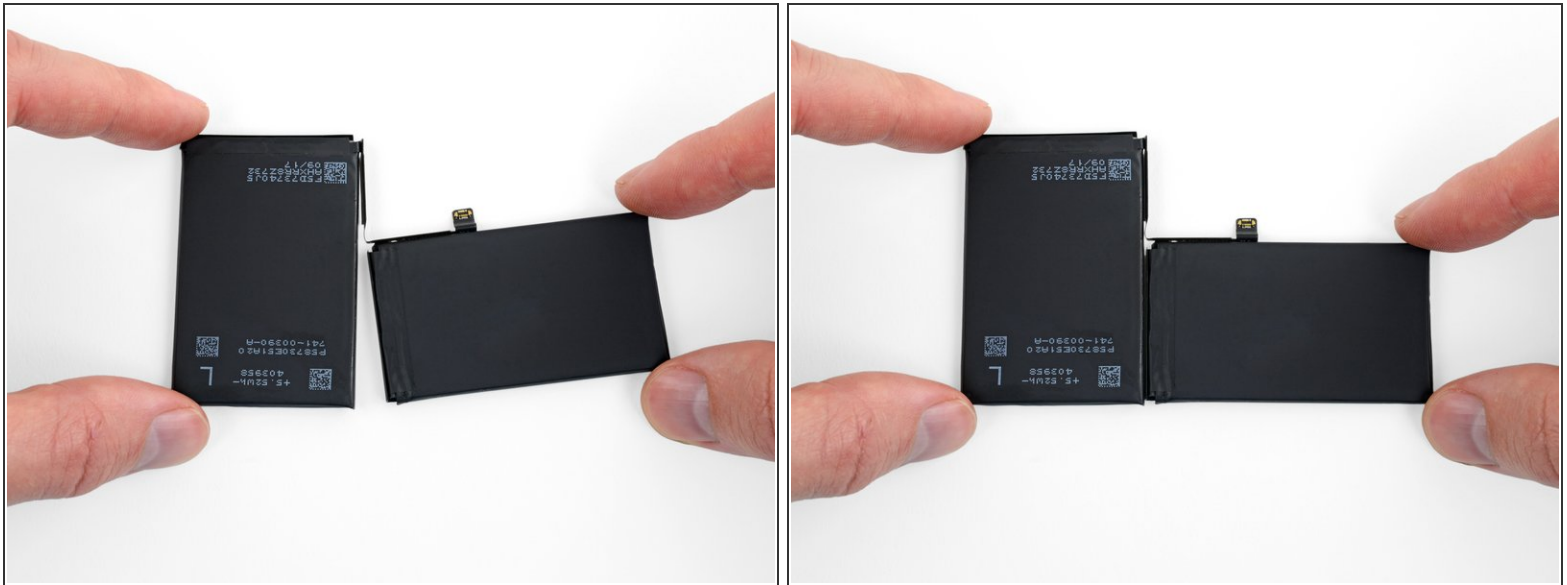
- [iPhone X Battery Adhesive Strips](#) (1)
-

Step 1 — iPhone X, XS, and XS Max Battery Adhesive Strips



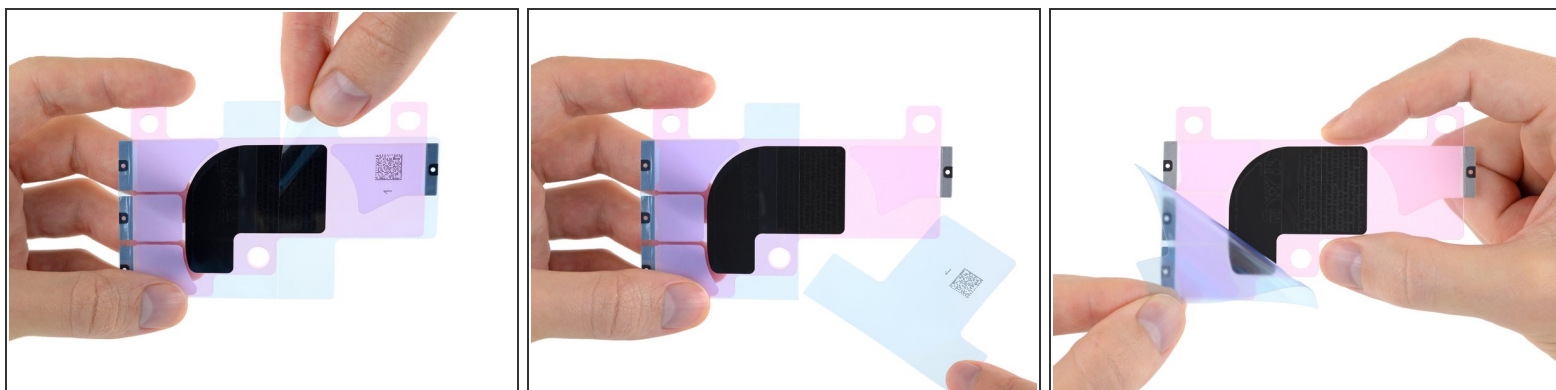
- Before you begin, it's a good idea to test-fit your new battery in the iPhone.
 - ⓘ This works best after reinstalling the speaker and Taptic Engine. Refer to the guide you used to remove your old battery.
 - ✦ Make sure the battery connector lines up correctly with its socket on the logic board.
 - ⚠ Be careful not to touch the Face ID camera and sensor hardware along the top edge of the iPhone (the "notch" area).

Step 2



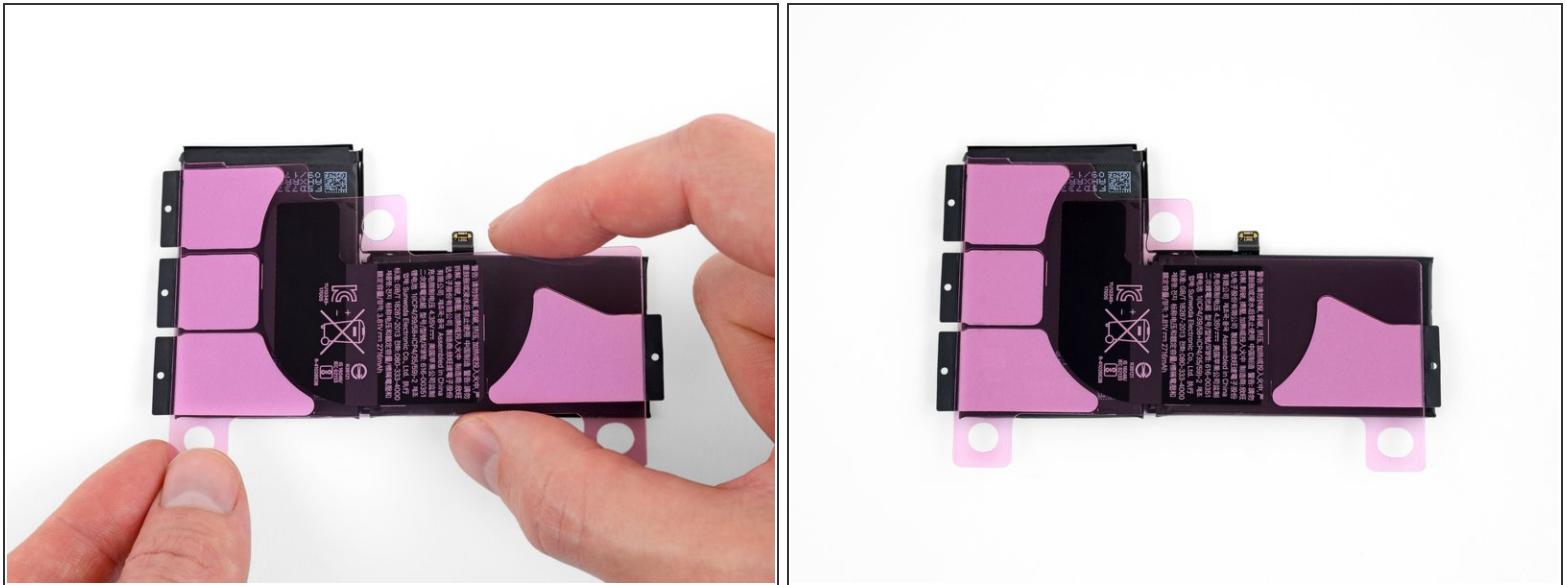
- If your test-fit looks good, take the battery back out and place it face-down on your work surface (with the connector contacts facing up).
- ☑ If your battery came with new adhesive strips already installed, [skip to Step 7](#).
- If you have a two-cell battery, make sure the cells are aligned as they would be when installed in the iPhone.

Step 3



- Peel off the **blue** plastic liner from your new set of adhesive strips, and discard it.
- ❗ Some strips have a single large blue liner, while others have a two-piece liner. Either way, peel it all off.
- ⚠ Once the adhesive is exposed, be careful not to touch it.

Step 4



- i** Once the adhesive sticks to the battery, you can't peel it off or reposition it—if you make a mistake, you'll have to start over with fresh adhesive strips.
- Double-check the orientation of the adhesive strips, and make sure your battery is still lying face-down (with the connector contacts facing up).
 - Carefully position the adhesive strips over the battery, and stick them in place as shown.
 - ✦ Place the strips slightly off-center, very close to the long edge of the battery.
 - ✦ The black pull tabs at each end should protrude equally far over the top and bottom edges of the battery.

Step 5



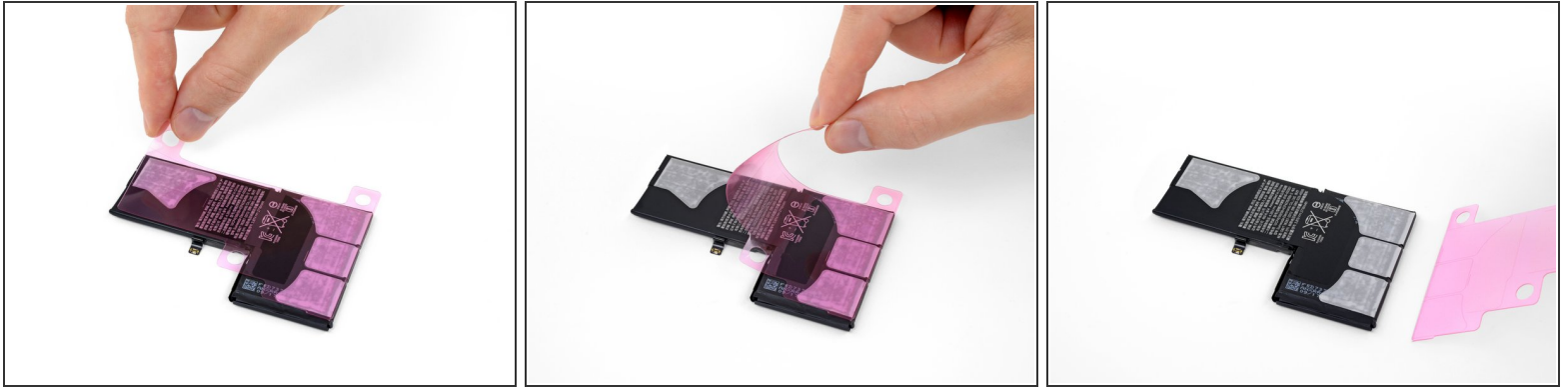
- Use your fingers or a cloth to press the strips firmly into place on the battery.
- Press in the center to adhere the black regulatory label to the battery as well.

Step 6



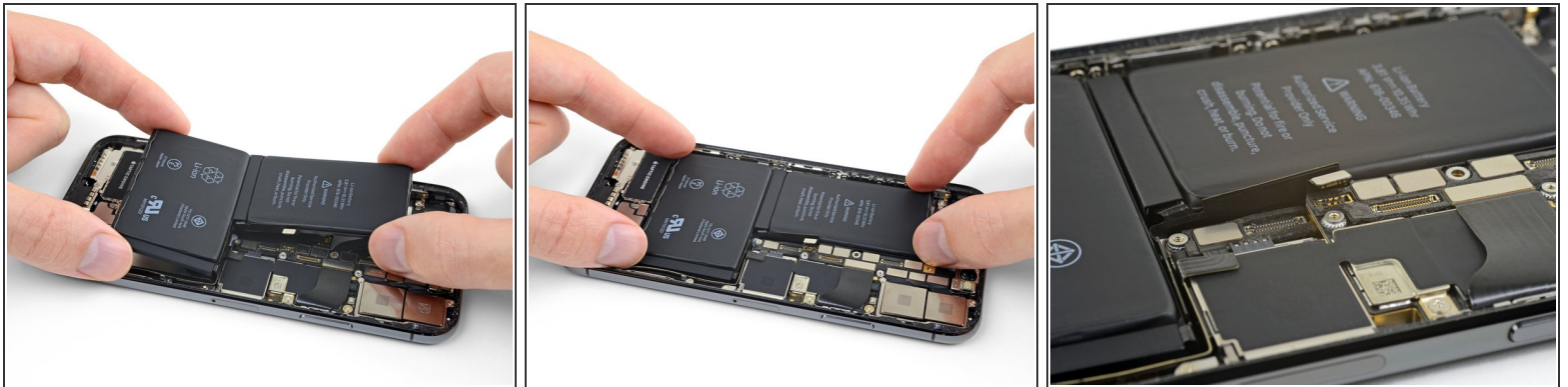
- Roll your fingertip along the edges of the battery to stick down the black pull tab at the end of each adhesive strip.
- ☒ Be sure to get all four tabs—three on the bottom edge, and one on the top.

Step 7



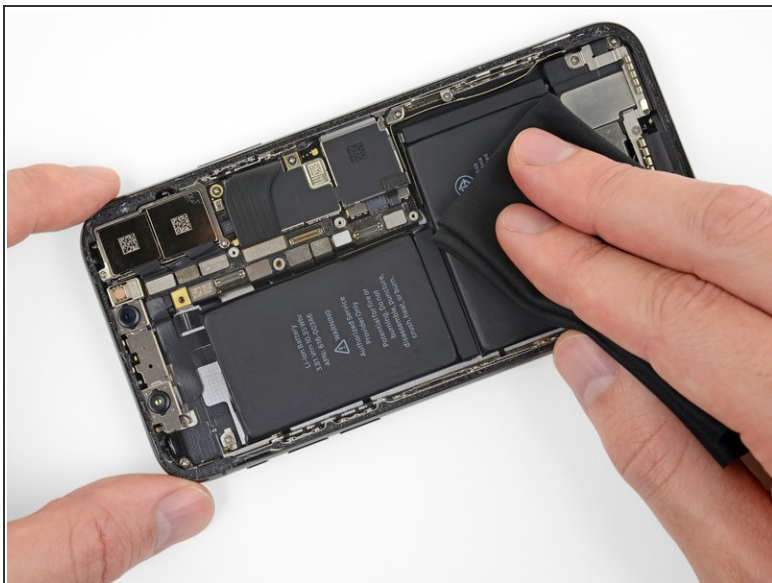
- Peel off and discard the pink liner, fully exposing the adhesive strips.

Step 8



- ⚠ When installing the battery, be careful not to touch the Face ID camera and sensor hardware along the top edge of the iPhone (the "notch" area).
- Carefully position the battery and set it into the iPhone.
- ☑ Make sure the battery connector lines up with its socket on the logic board.
- ⚠ It's okay to temporarily connect the battery to make sure it lines up correctly, but make certain it's disconnected before reassembling your iPhone.

Step 9



- Press the battery firmly onto the adhesive strips to secure it in place.
- ☑ If your battery came with an additional plastic liner on the top, peel it off and discard it before closing up your phone.

To reassemble your iPhone, return to the guide you used to remove the battery and follow the remaining steps in reverse order.

Remember to take your old battery to an [R2 or e-Stewards certified recycler](#).