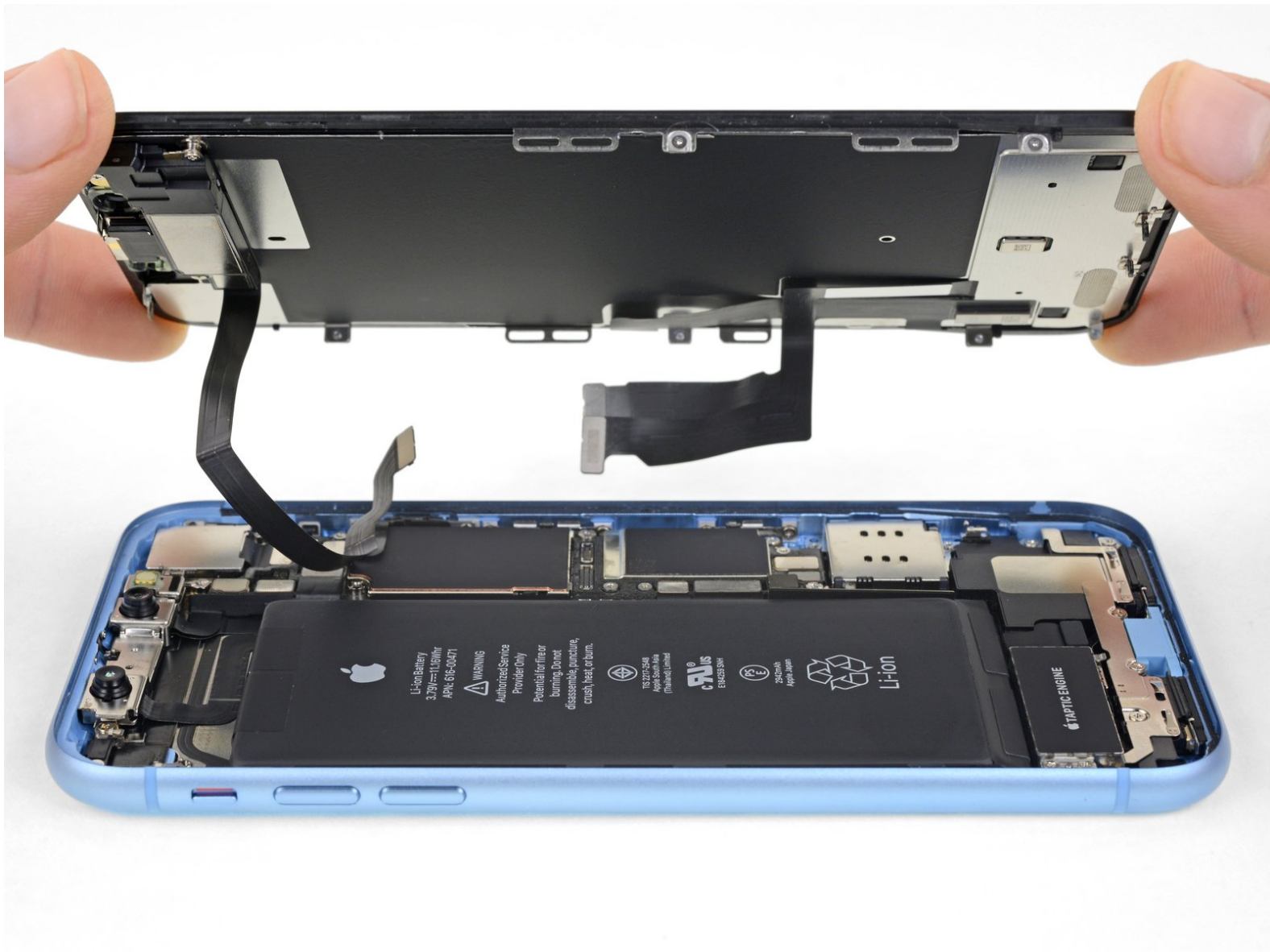




iPhone XR Display Assembly Replacement

Prerequisite-only guide for removing the display assembly from the iPhone XR for access to internal components.

Written By: Adam O'Camb



INTRODUCTION

Prereq-only for detaching the display assembly.



TOOLS:

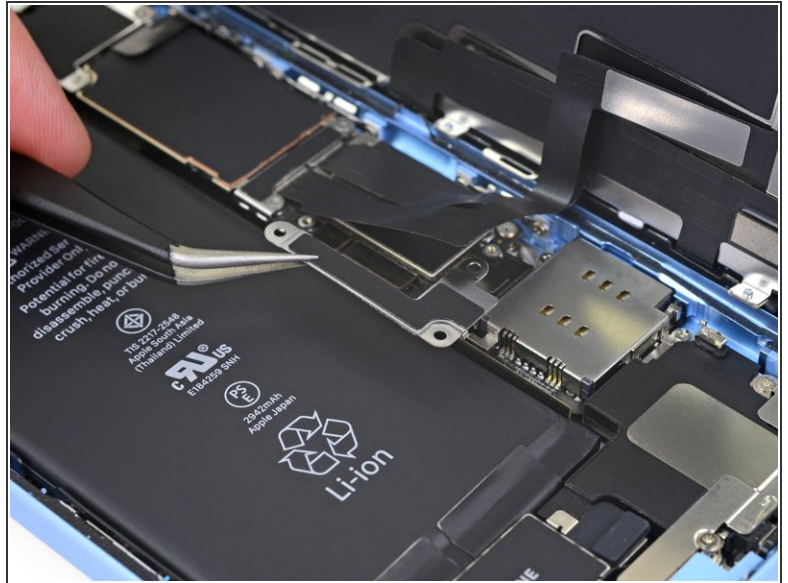
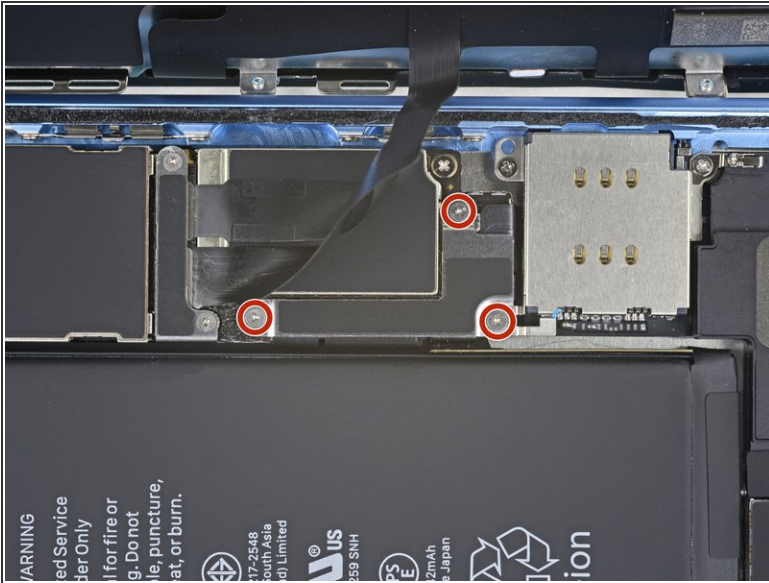
- [Tri-point Y000 Screwdriver Bit](#) (1)
- [Phillips PH000 Screwdriver](#) (1)
- [Spudger](#) (1)
- [Tweezers](#) (1)



PARTS:

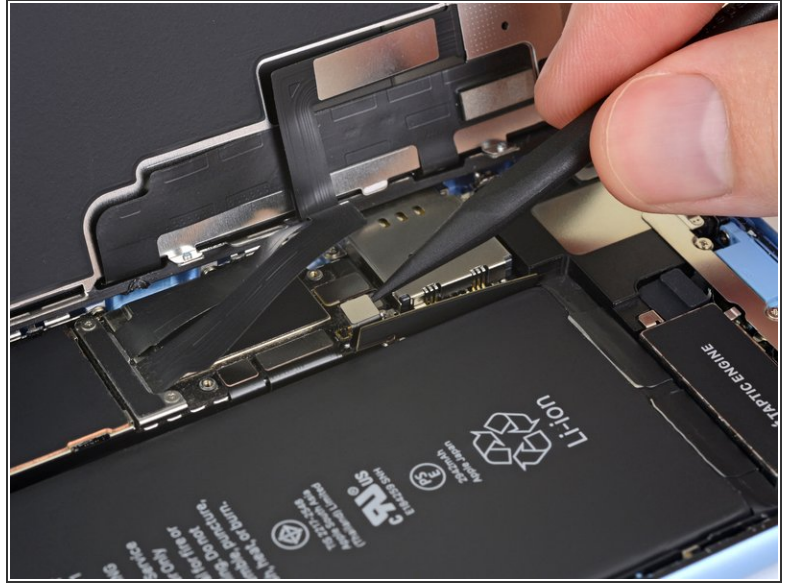
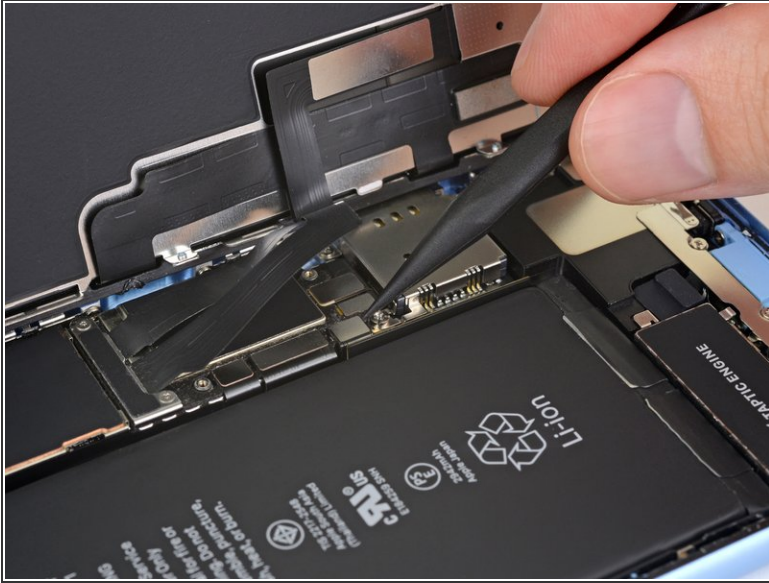
- [iPhone XR Screen](#) (1)

Step 1 — Unscrew the battery connector cover



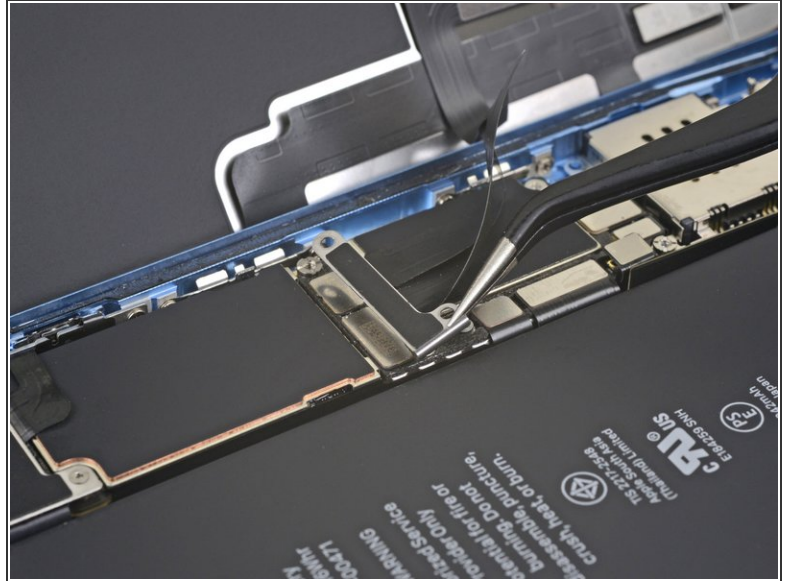
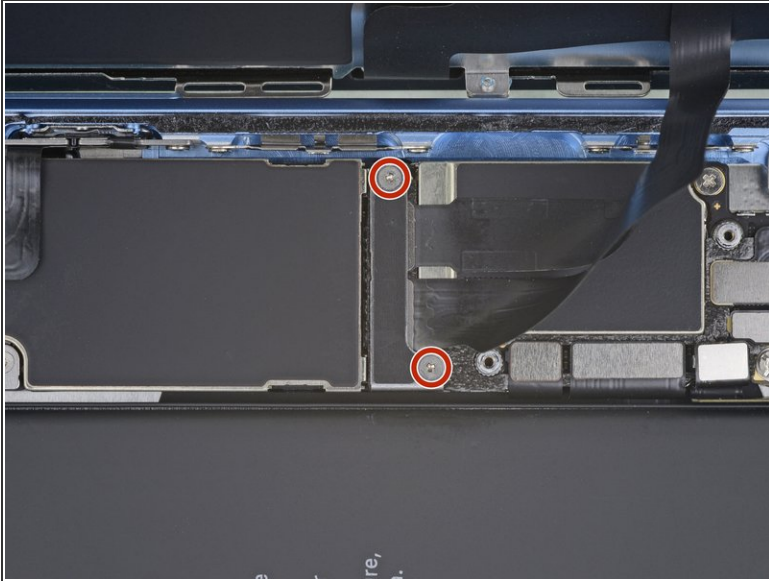
- Remove three 1.2 mm Y000 screws securing the battery connector cover bracket.
- Remove the bracket.
- ⓘ Throughout this repair, [keep track of each screw](#) and make sure it goes back exactly where it came from to avoid damaging your iPhone.
- ➦ During reassembly, this is a good point to power on your iPhone and test all functions before you seal the display in place. Be sure to power your iPhone back down completely before you continue working.

Step 2 — Disconnect the battery



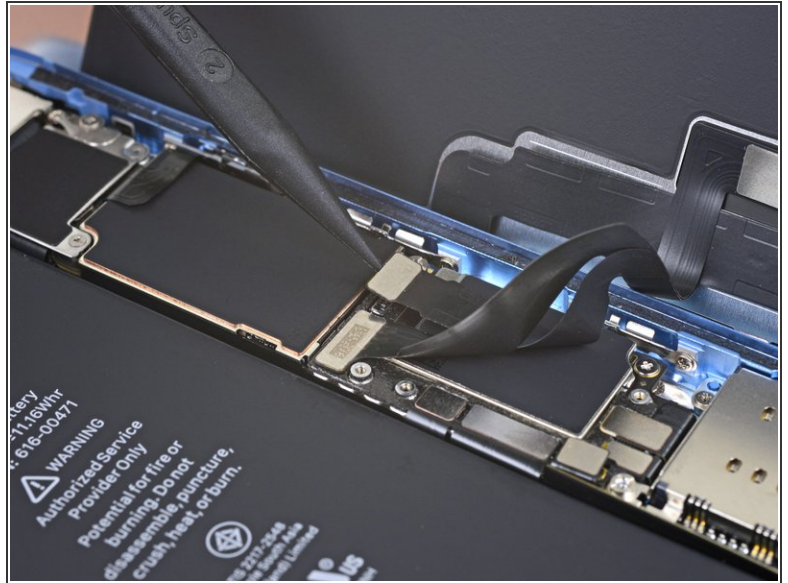
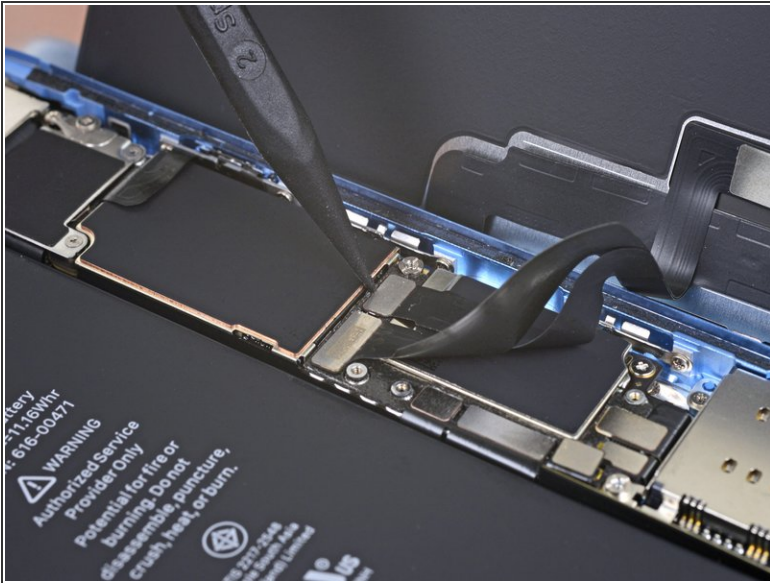
- Use the point of a spudger to pry the battery connector straight up out of its socket.
 - ⓘ Try not to damage the black silicone seal surrounding this and other board connections. These seals provide extra protection against water and dust intrusion.
- Bend the connector slightly away from the logic board to prevent it from accidentally making contact with the socket and providing power to the phone during your repair.

Step 3 — Unscrew the display connector cover



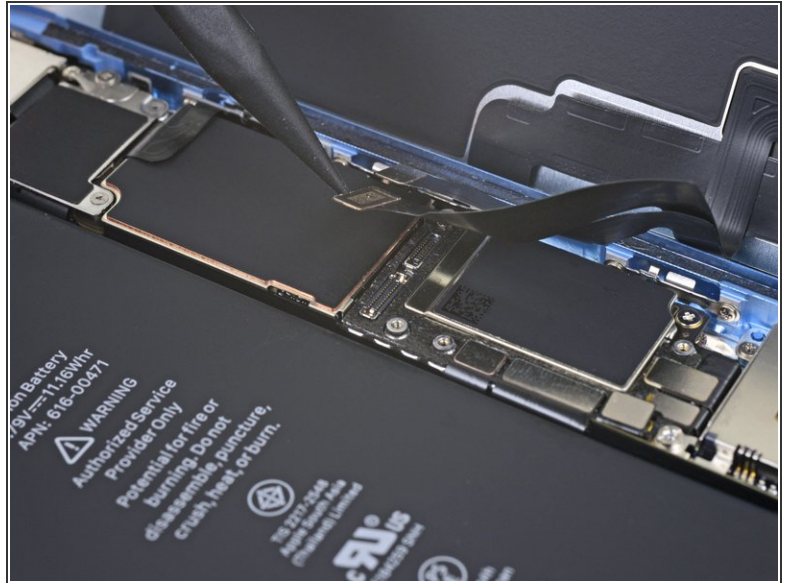
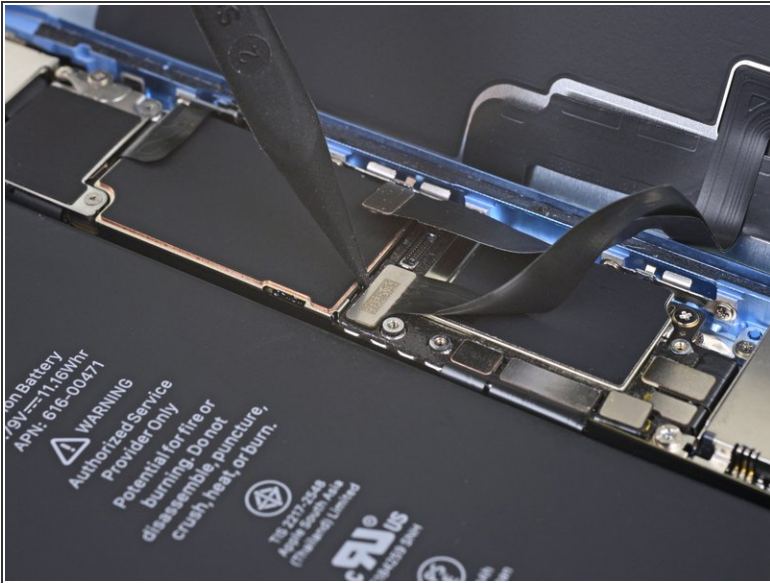
- Remove the two 1.2 mm Y000 screws securing the display connector bracket.
- Remove the bracket.

Step 4 — Disconnect the digitizer



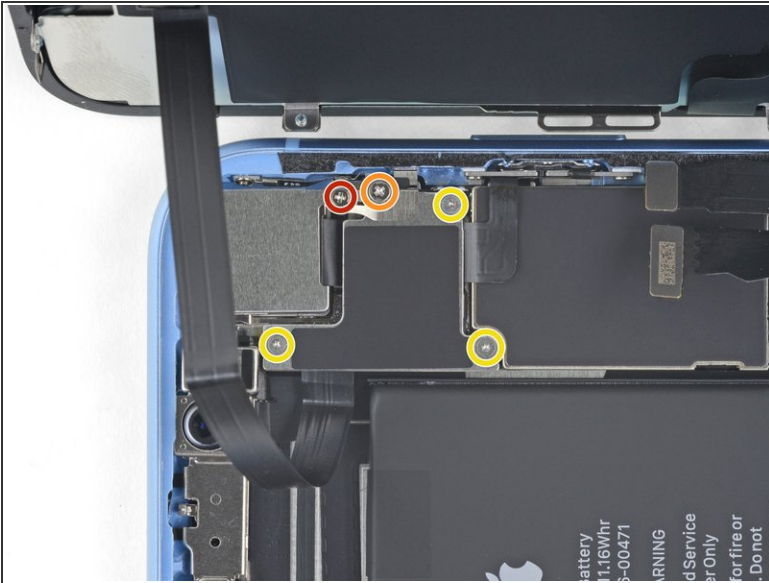
- Use the tip of a spudger to pry up and disconnect the digitizer cable.
- ✦ To re-attach [press connectors](#) like this one, carefully align and press down on one side until it clicks into place, then repeat on the other side. Do not press down on the middle. If the connector is misaligned, the pins can bend, causing permanent damage.
- ✦ If any part of your screen doesn't respond to touch after your repair, disconnect the battery and then re-seat this connector, making sure it clicks fully into place and that there's no dust or other obstruction in the socket.

Step 5 — Disconnect the display



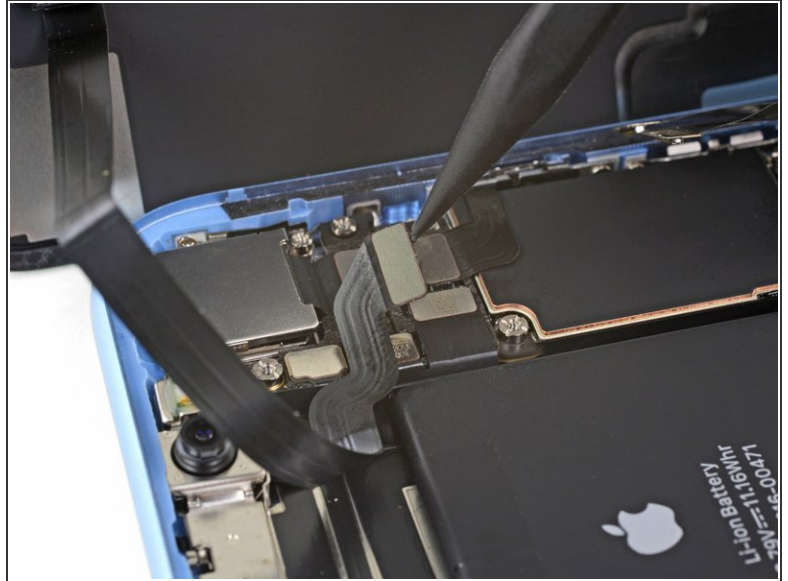
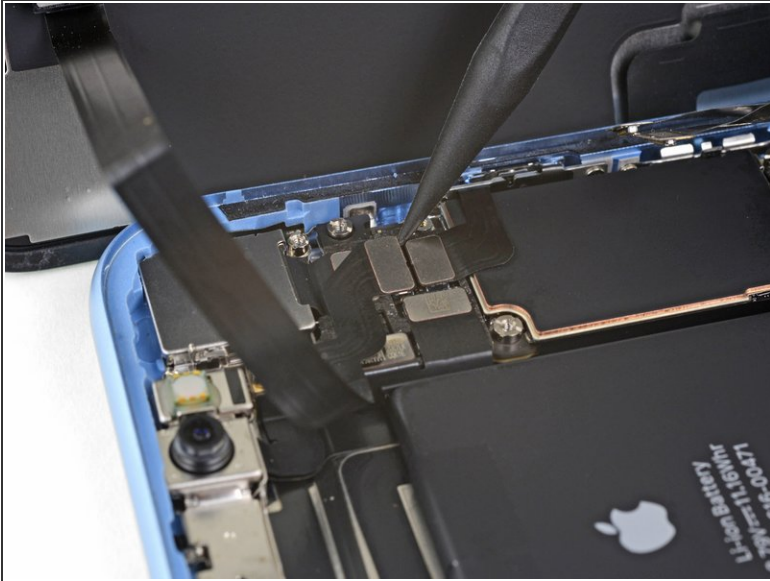
- Use the tip of a spudger to disconnect the display cable connector.

Step 6 — Unscrew the logic board connector cover



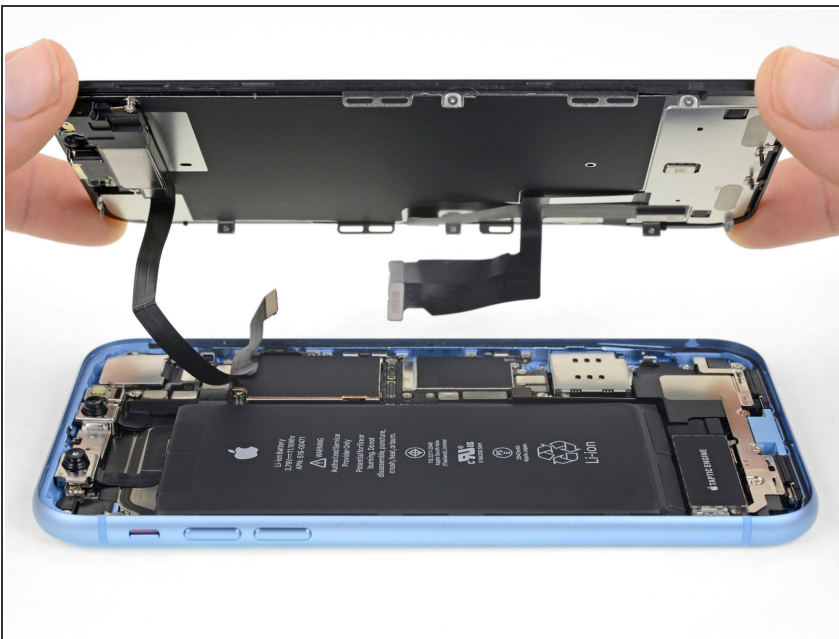
- Remove the five screws securing the logic board connector bracket to the rear case:
 - One 1.3 mm Phillips screw
 - One 1.5 mm Phillips screw
 - Three 1.2 mm Y000 screws
- Remove the bracket.
 - ⓘ Be careful not to lose the [smaller bracket](#) clipped onto the edge. It's secured with a [small clip](#) and is easy to accidentally knock off of the larger bracket.

Step 7 — Disconnect the front sensors



- Use the tip of a spudger to pry the front sensor assembly connector up from its socket.

Step 8 — Remove the display assembly



- Remove the display assembly.
- ✦ During reassembly, pause here if you wish to [replace the waterproof adhesive around the edges of the display](#).

To reassemble your device, follow these instructions in reverse order.