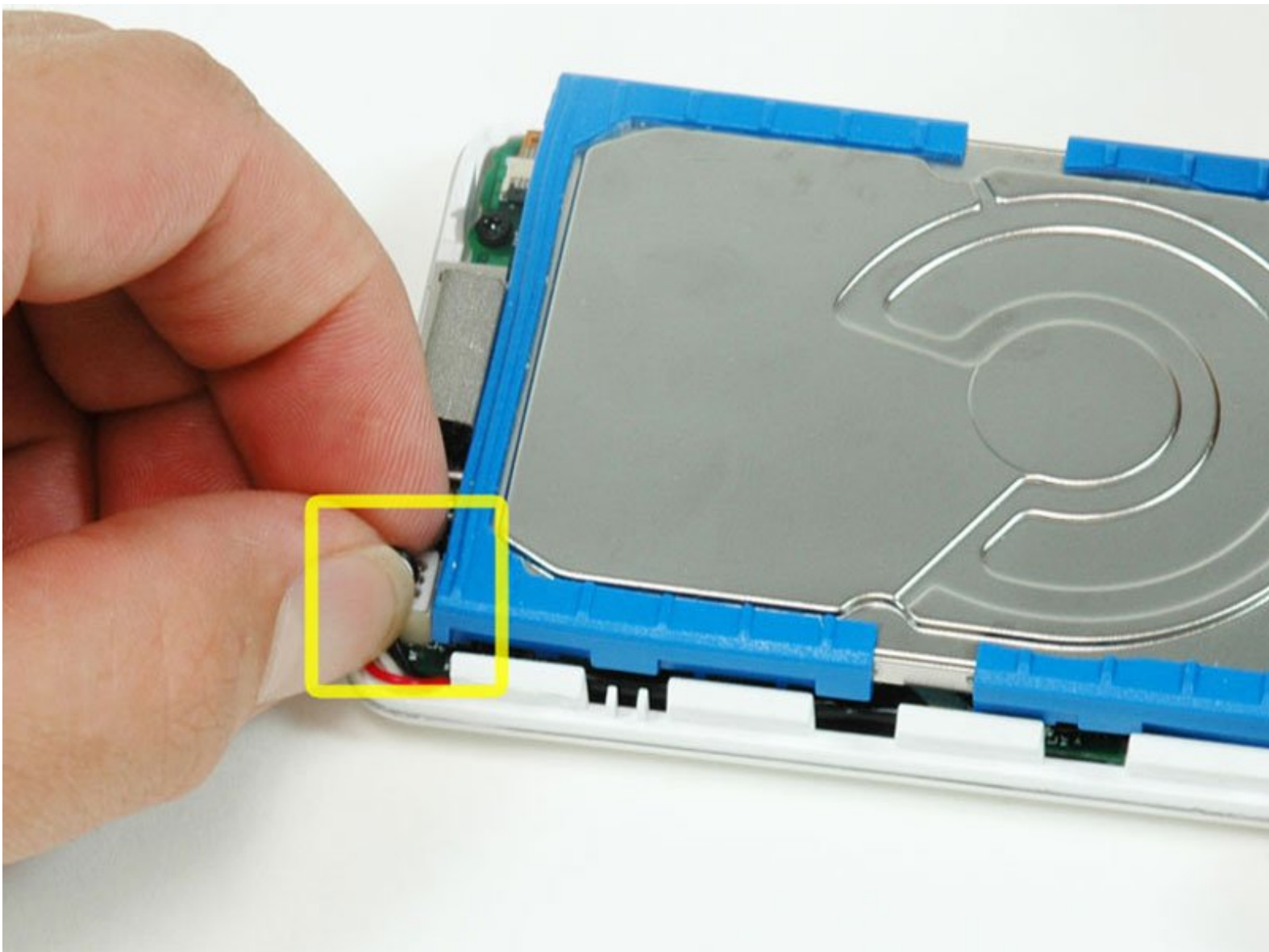




iPod 4th Generation or Photo Battery Replacement

Written By: iRobot



INTRODUCTION

Battery not lasting long? Swap it out.



TOOLS:

- [iFixit Opening Tools](#) (1)
- [Spudger](#) (1)
- [T6 Torx Screwdriver](#) (1)



PARTS:

- [iPod 4G/Photo Replacement Battery](#) (1)
Part Only
- [iPod 4G/Photo Replacement Battery](#) (1)
Fix Kit
This contains the part and tools needed.

Step 1 — Rear Panel



i Before opening your iPod, ensure that the hold switch is in the locked position. The orange bar should be visible, indicating hold is active.

Step 2



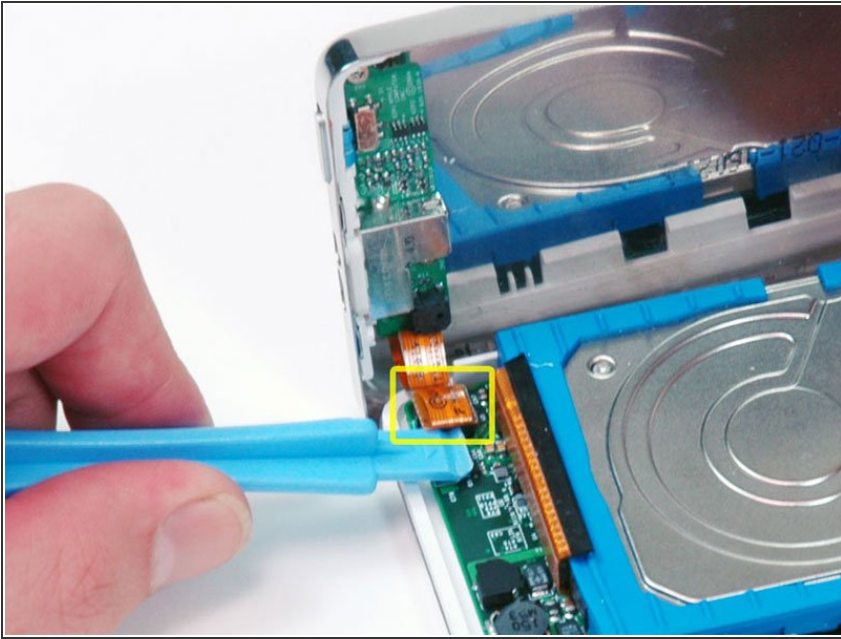
- Insert an opening pick as far as possible into the seam between the plastic front and the metal rear panel, on the right edge of the iPod.
 - ⓘ You may need to rock the pick back and forth to slide it in farther.
- Use the opening pick to pry up against the plastic front panel and release five retaining tabs (seen in the third photo).
- Slide the pick along the edge of the iPod and continue prying to release the rest of the retaining tabs.
- After all five tabs along the right side are free, the case should easily open.

Step 3



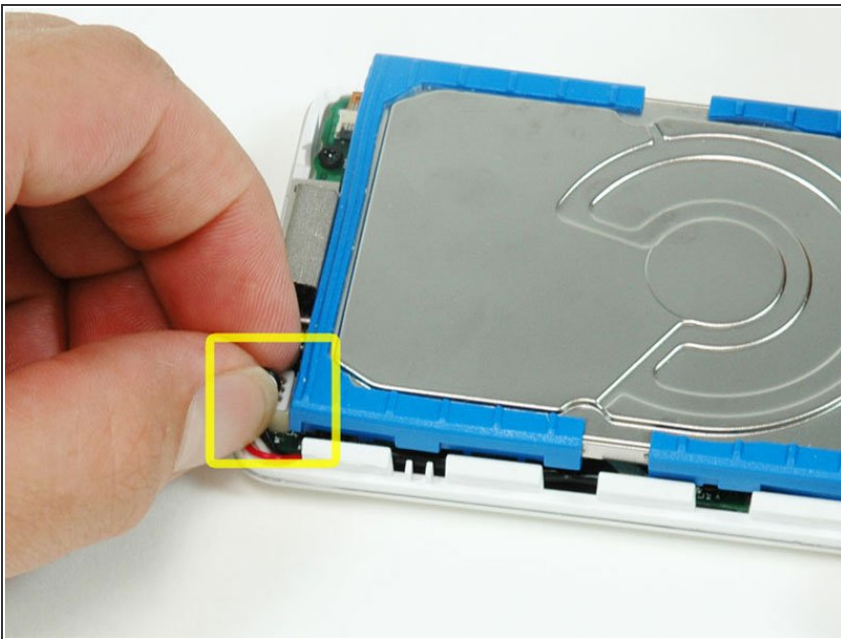
- ⓘ The iPod case is now open, but don't separate the two halves just yet. There is still an orange ribbon cable connecting the headphone jack to the logic board.
- Open the case like a book with the dock connector edge at the top, and lay the rear panel next to the front half of the iPod.

Step 4



- Use a plastic tool or your fingernails to carefully disconnect the orange headphone jack cable. Be sure to pull straight up on the connector, not the cable itself.

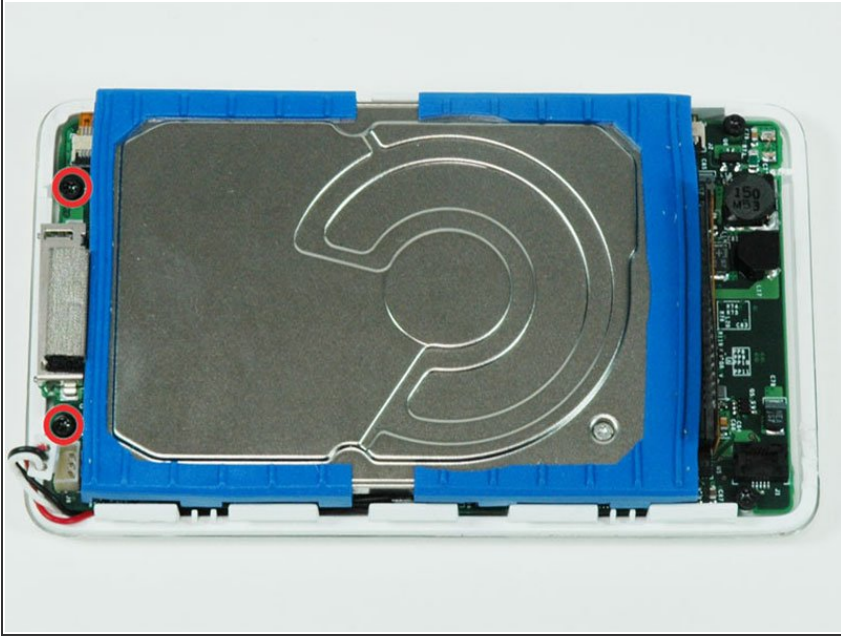
Step 5 — Battery



- Carefully disconnect the white battery connector from the logic board. Be sure to pull only on the

connector itself and not on the cables.

Step 6



- Remove the 2 black T6 Torx screws from the left side of the logic board.

Step 7



- Use one hand to lift the hard drive up in order to access the battery beneath.
- Carefully thread the battery cable around the end of the logic board. Be careful not to pull up on the logic board too much while freeing the battery cable.

Step 8



- Lift the battery out of the front case by pulling it up by the battery leads.
- If necessary, grab the battery to pull it off the adhesive securing it to the front case.
- ⓘ It may be helpful to use a spudger to pry the battery up off its adhesive.
- Lift the battery up and out of the front case.

To reassemble your device, follow these instructions in reverse order.