



# iPod Nano 2nd Generation Teardown

Written By: Luke Soules



---

# INTRODUCTION

We disassembled this iPod on September 13, 2006.



## TOOLS:

- [Phillips #00 Screwdriver](#) (1)
  - [iFixit Opening Tools](#) (1)
  - [Spudger](#) (1)
-

## Step 1 — iPod Nano 2nd Generation Teardown



- Before we take it apart, here's some images of the new packaging.
- Here's the sexy, new, 52% less volume packaging Steve was so excited about.

## Step 2



- The new packaging is innovative. Plastic retainers hold the iPod on top and bottom, and you must flex the plastic packaging to get the iPod out.

## Step 3



- Meet the family. From left to right: Mini, new blue Nano, new black Nano, old black Nano.
- Ah, what to call it? iPod Nano Gen 2? iPod Mini Gen 3? Remastered iPod Nano? We vote for 'that little blue music thingy.'

## Step 4



- Goodies! Left to right:
  - iPod
  - Fold-out quick start guide (includes two small white Apple stickers)
  - Plastic 'dock'
  - New earbuds
  - USB docking cable
- The center button is concave, as opposed to the old Nano (flat), and old Mini (convex).

## Step 5



- It may be thinner than the old Nano, but it's sure not by much.

## Step 6



- The back shouldn't scratch instantly anymore.



## Step 7



- On to the disassembly!
- Before opening your iPod, ensure that the hold switch is in the locked position.
- Opening the iPod can be challenging. Don't get discouraged if it takes you a few tries before the iPod is opened.

## Step 8



- Carefully insert an iPod opening tool in the seam between the metal casing and white plastic top. Be careful not to damage the soft plastic with your tool.
- The new Nano more closely resembles the old Mini design than the previous Nano generation.

## Step 9



- Lift the top bezel off of the iPod.

## Step 10



- Pry the bottom bezel off using the same technique as the top.

## Step 11



- Lift the bottom bezel off. It's glued on using a mild adhesive, so some force may be required.

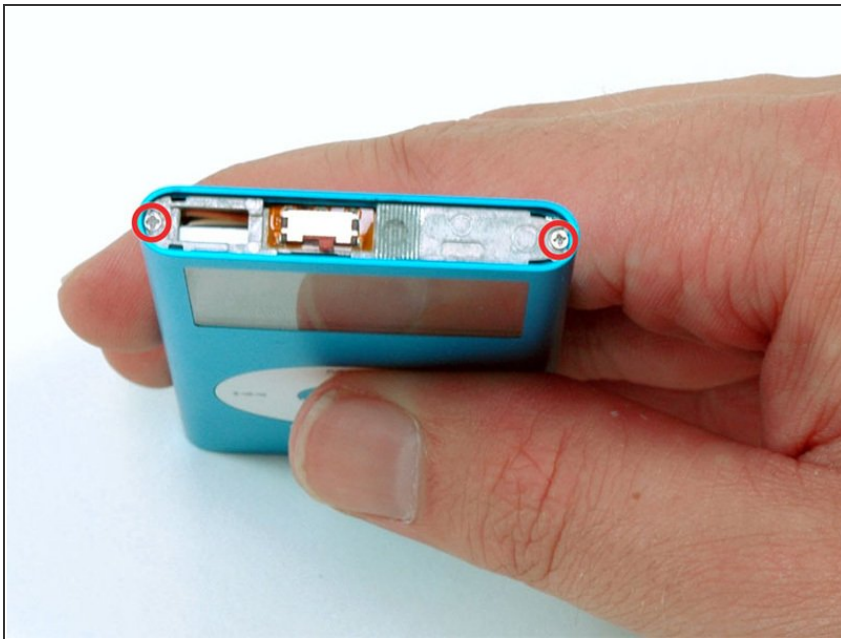


## Step 12



- Remove the two Phillips #00 screws from either side of the dock connector.

## Step 13



- Remove the two Phillips #00 screws from the top of the iPod.

## Step 14



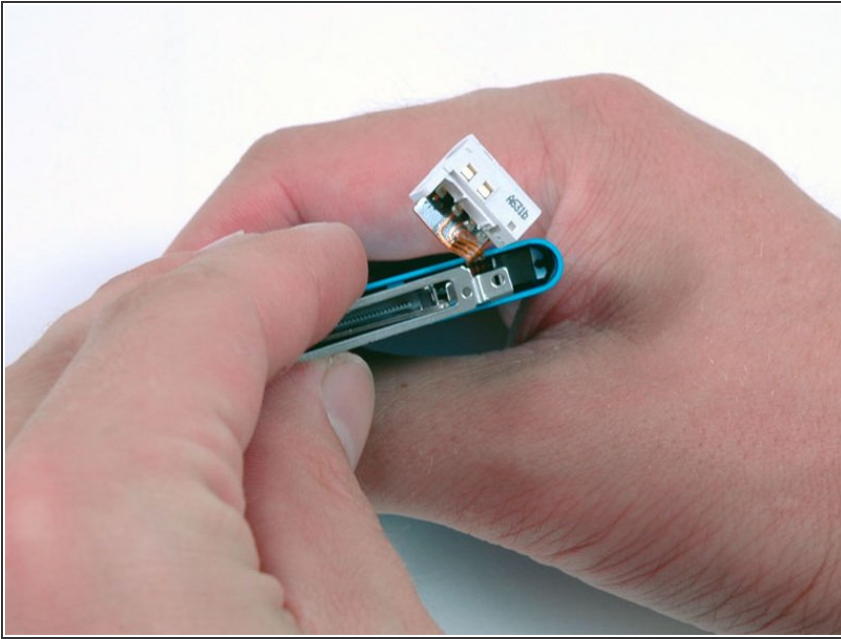
- Pry out the headphone jack slowly with a spudger. **Do not** remove the headphone jack entirely, as it is connected via a fragile ribbon connector to the click wheel.

## Step 15



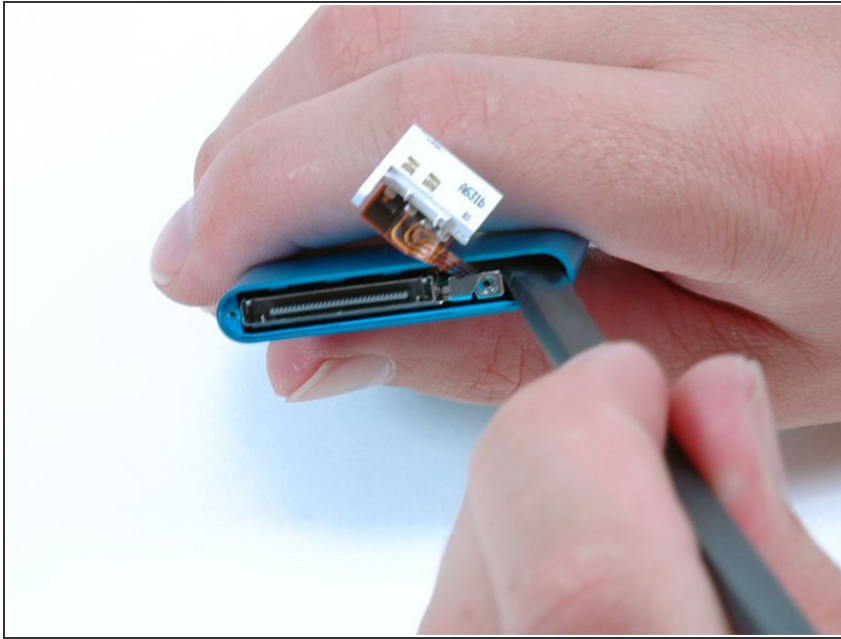
- Once you have pulled the headphone jack out of its slot, remove the Phillips #00 screw formerly concealed beneath it.

## Step 16



- Remove the metal bracket surrounding the docking connector.

## Step 17



- Disconnect the headphone and click wheel cable from the logic board. It's tricky to see what you're doing, so you'll have to feel the connector inside the iPod with the spudger.
- ⓘ You need to pry the connector toward the front of the iPod until it comes loose from the logic board.
- ⚠ Do not entirely remove the headphone jack. The cable is still connected to the click wheel.

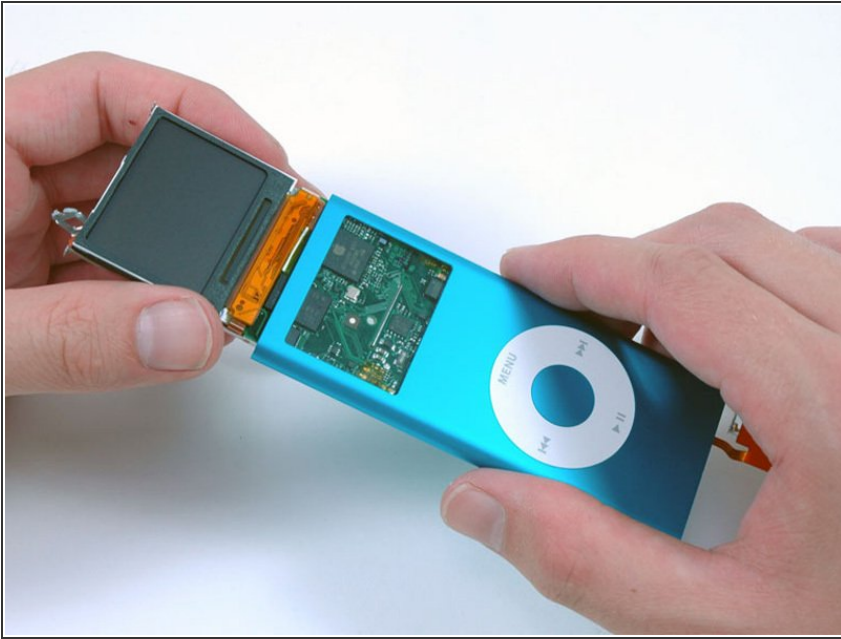
## Step 18



- Use a spudger to push the logic board assembly out of the casing. The click wheel and headphone jack should remain in the iPod.
- ⚠ Be careful not to catch the headphone jack and click wheel on the logic board as you remove the logic board and display.



## Step 19



- Completely remove the display and logic board from the iPod.

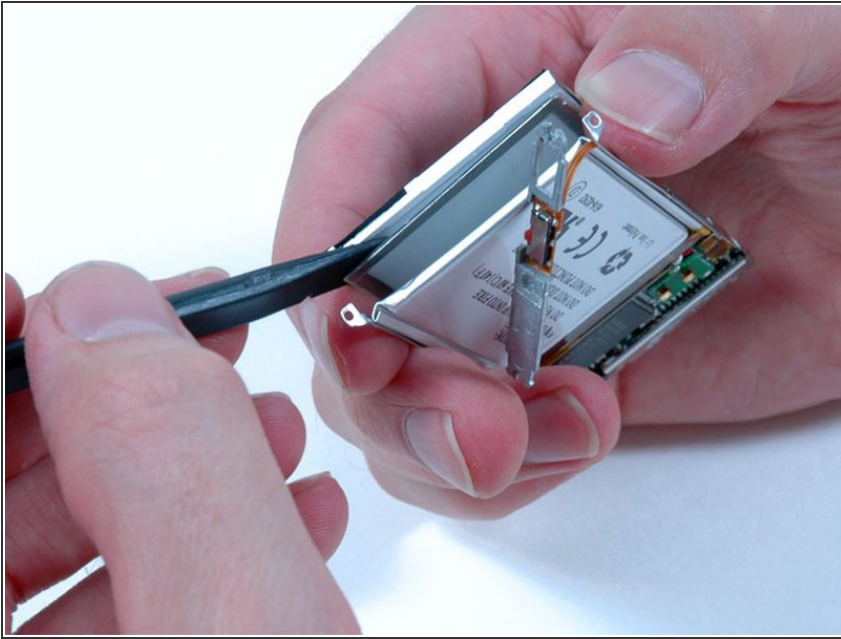
## Step 20



- We got it apart!
- ⓘ The casing is certainly more scratch-resistant than the previous Nano. We were careful and didn't scratch the case at all.

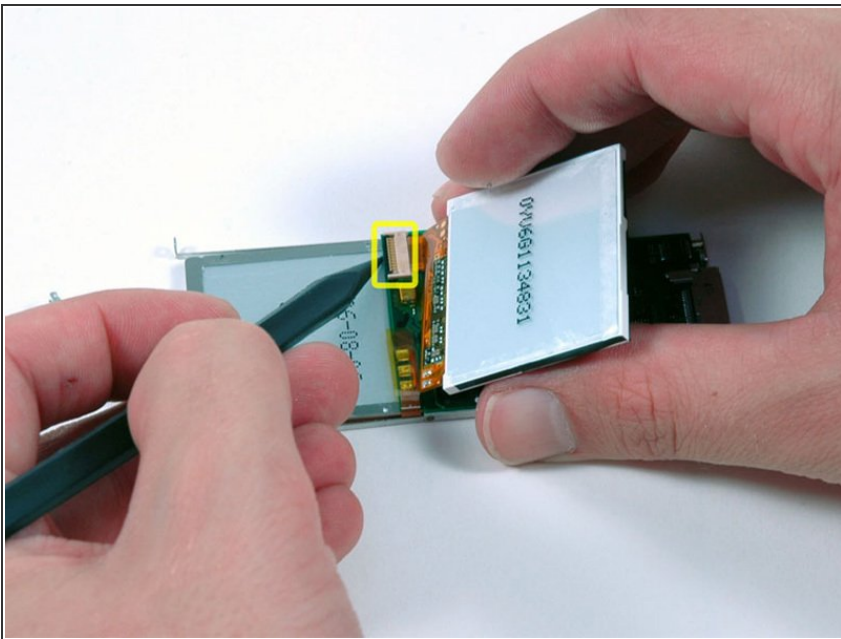


## Step 21



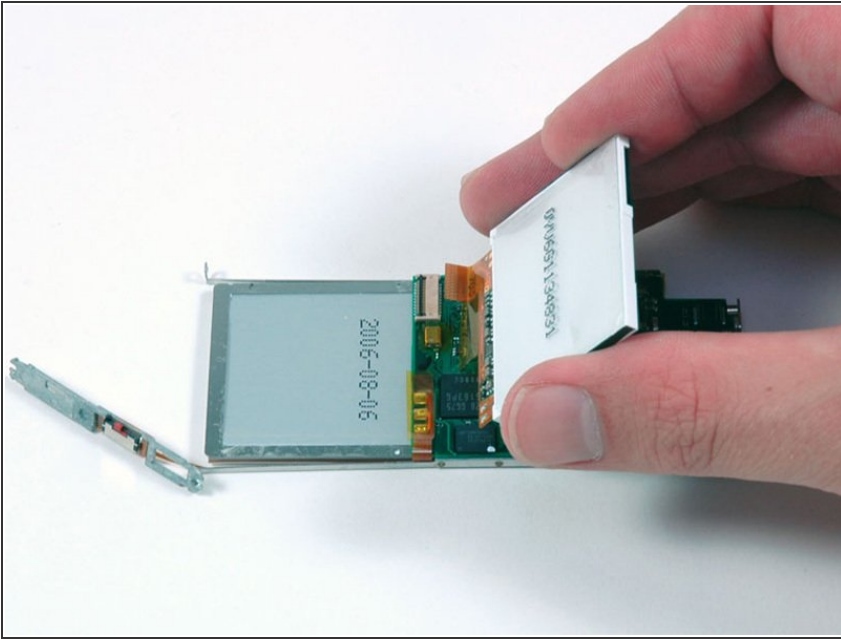
- Pry the metal bracket off the back of the display. Make sure you only pry off the bracket and not the clear shielding on the rear of the display.

## Step 22



- Lift up the display and use a spudger to flip up the black plastic retaining bar holding the display ribbon cable in place.

## Step 23



- Slide the display ribbon out of its connector and lift the display off of the logic board.

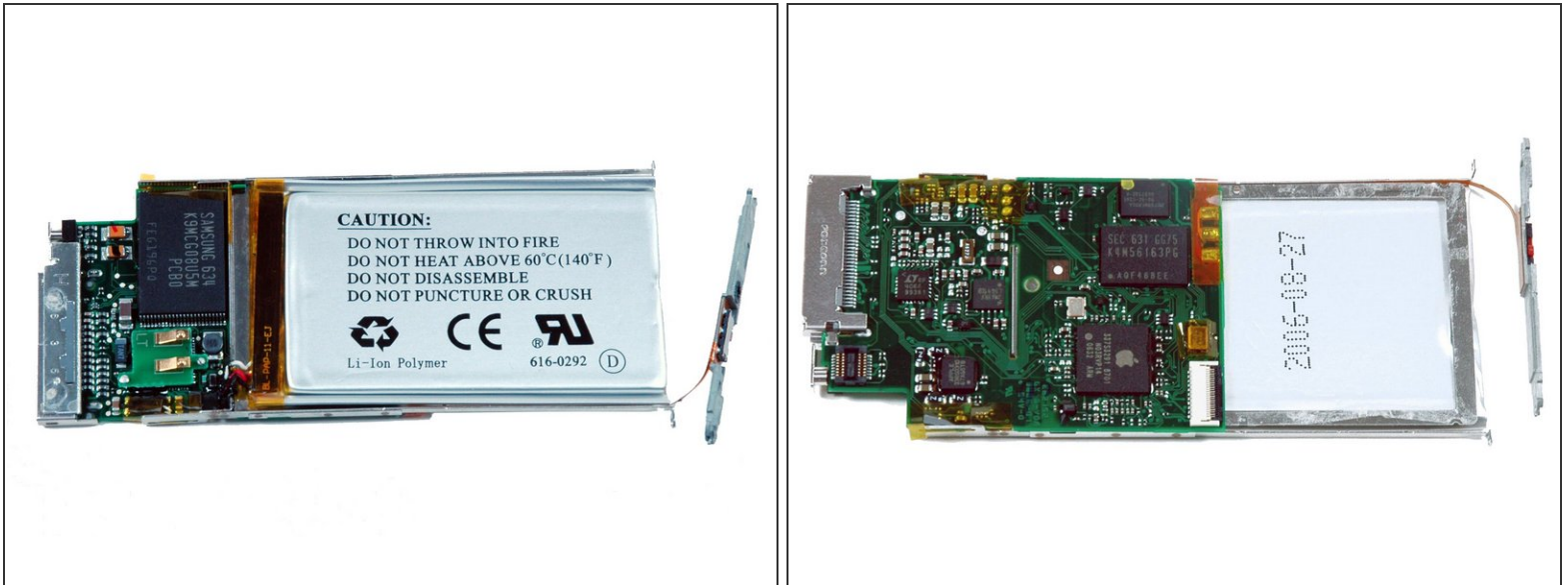
## Step 24



- Left: new Nano logic board and battery.
- Right: old Nano logic board and battery.
- The new battery is thinner, but significantly larger.
- The new Nano uses Samsung flash memory, just like the previous model.

⚠ Whatever you do, don't throw your new iPod into a fire!

## Step 25



- Close up of logic board. Here's some extra-large [top](#) and [bottom](#) logic board photos.
- Notice the Apple logo on the ARM chip. The numbers on it read: 33753291 8701 N02R5Q5 0627 ARM.
- That's it, folks! We sell parts for iPods (including this one), so check out our iPod parts store to fix up your old and broken iPods.

To reassemble your device, follow these instructions in reverse order.