



# iPod Nano 5th Generation Glass Panel Replacement

Replace the curved glass screen to make your iPod Nano look like new again.

Written By: Matthew Newsom



# INTRODUCTION

Replace the curved glass screen to make your iPod Nano look like new again.



## TOOLS:

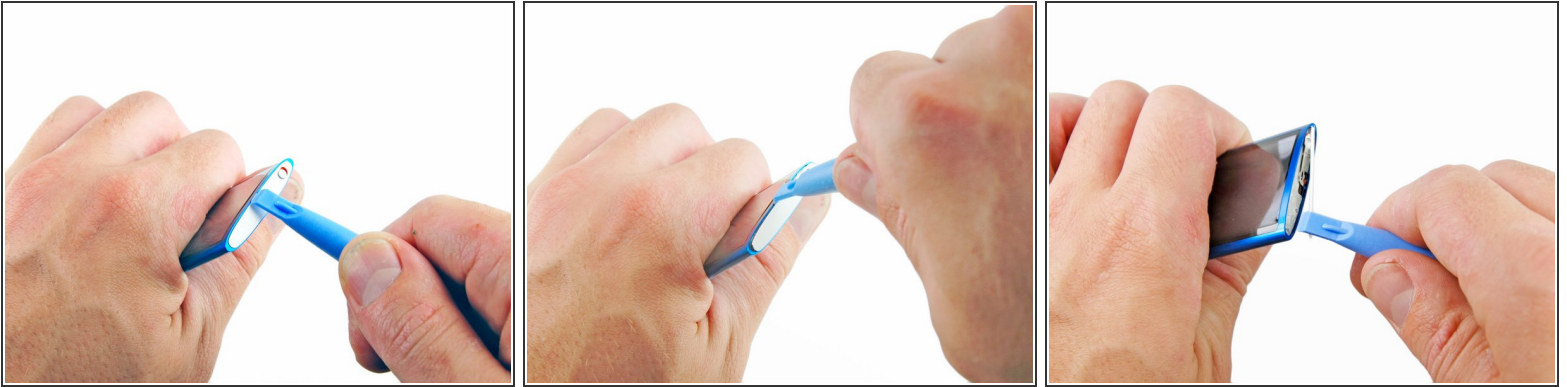
- [Phillips #00 Screwdriver](#) (1)
- [iFixit Opening Tools](#) (1)



## PARTS:

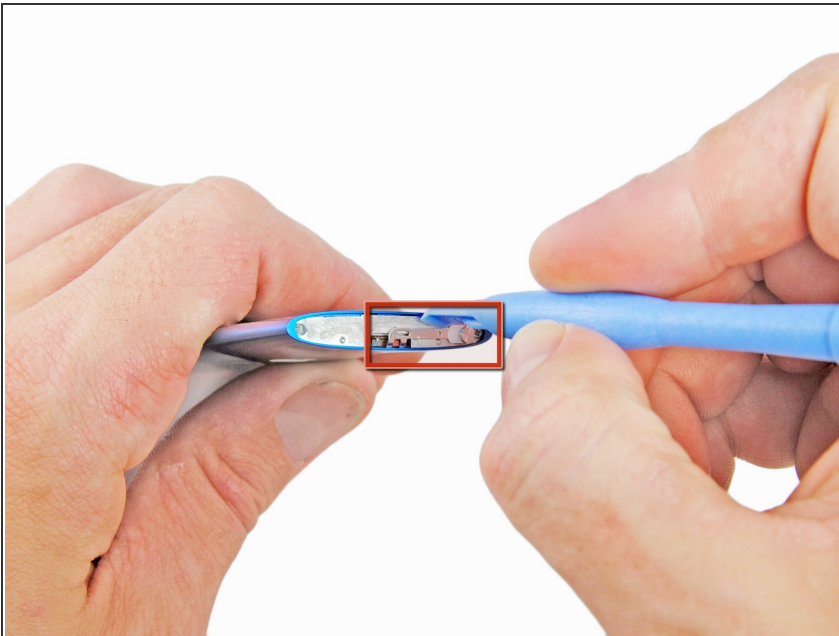
- [iPod nano \(5th Gen\) Glass](#) (1)

## Step 1 — Glass Panel



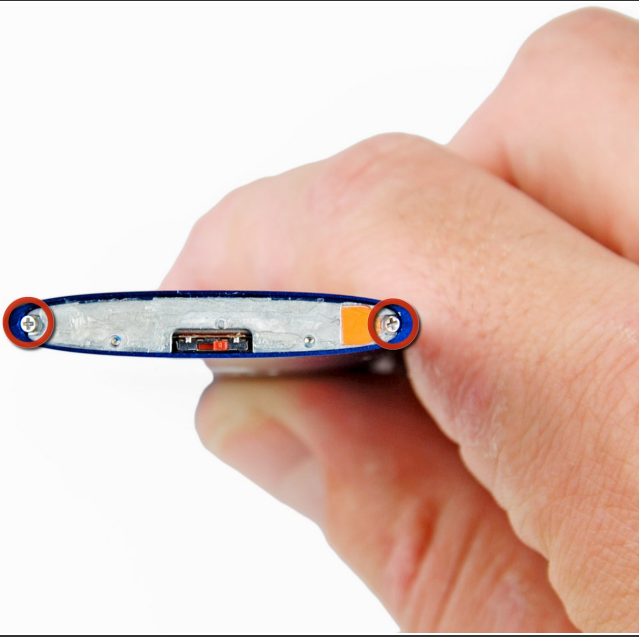
- Insert an iPod opening tool between the outer case and top bezel near the screen.
- Lifting up on the iPod opening tool, gently pry the top panel off of the device.
- ⓘ The bezel is attached with adhesive, and may require some force to remove.

## Step 2



- Use an iPod opening tool to pry the hold switch button off of the hold switch plate.

### Step 3



- Remove the two 3.2 mm screws.
- ⓘ These screws are angled toward the outer case and are also very small. Use a sharp screwdriver and be careful not to strip the screws.

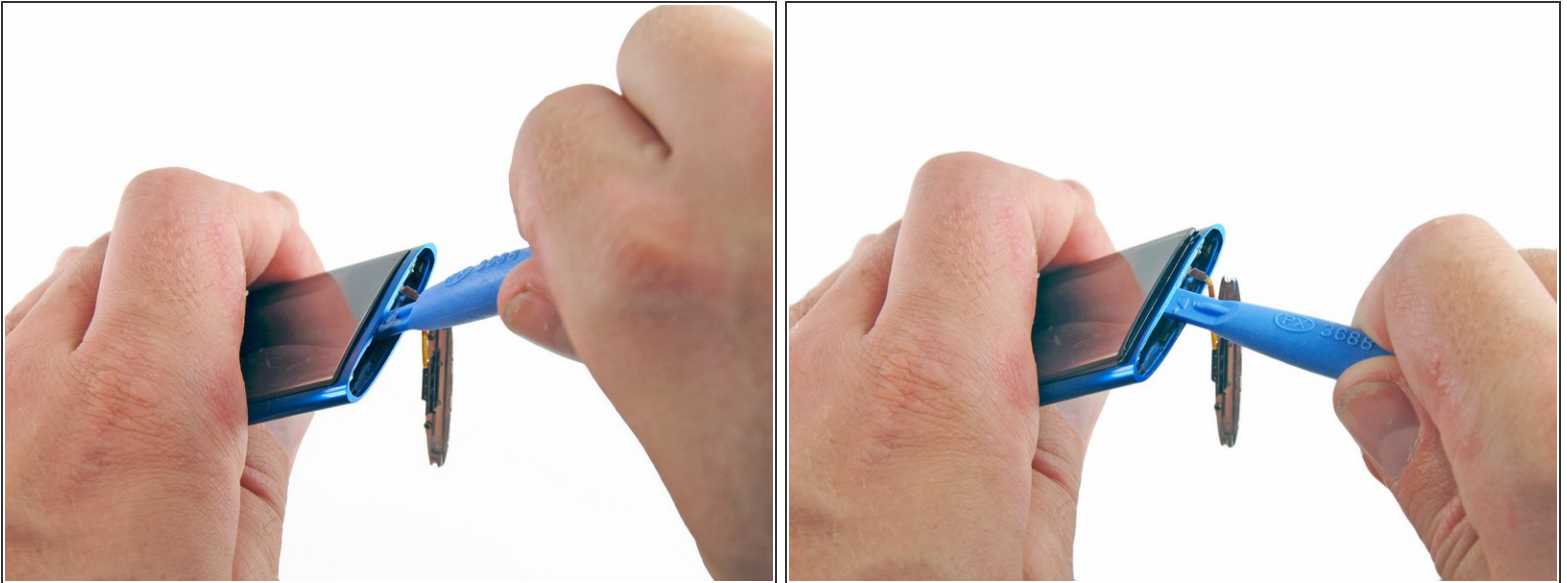
### Step 4





- Insert an iPod opening tool between the outer case and the metal hold switch plate near the top of the screen .
  - While slightly lifting up on the iPod opening tool, pull the hold switch plate out of the iPod.
- ⚠ The hold switch plate is still attached to iPod by a very thin, very fragile ribbon cable. Be careful not to break it.



## Step 5



-  The glass panel is held in place by adhesive on all four sides. In the following steps, work carefully to avoid cracking the glass.
- Insert an iPod opening tool between the display and the glass panel at the top of the device.
  - Rotate the iPod opening tool towards the rear of the device, slightly lifting the top of the glass out of the outer case.
-  The glass panel does not raise very far. Do not attempt to completely remove the panel yet, or you are likely to break the display screen.

## Step 6



- While lifting the screen up with one iPod opening tool, insert a second iPod opening tool in between the outer case and the top left edge of the glass panel.
- Remove the first iPod opening tool from between the glass and LCD in the top of the device.

## Step 7



- Prying up slightly on the iPod opening tool, insert a second iPod opening tool in between the front glass and the outer case, on the right side of the screen.
- Slide the second iPod opening tool along the right edge of the panel to remove the adhesive.

## Step 8



- With one iPod opening tool still between the glass and outer case, insert a second iPod opening tool inbetween the front glass and outer case, on the right side.
- Slide the second iPod opening tool toward the bottom of the device to remove the adhesive.

## Step 9



- Lifting the glass from the side nearest the top of the iPod, remove the glass panel from the Nano.

To reassemble your device, follow these instructions in reverse order.