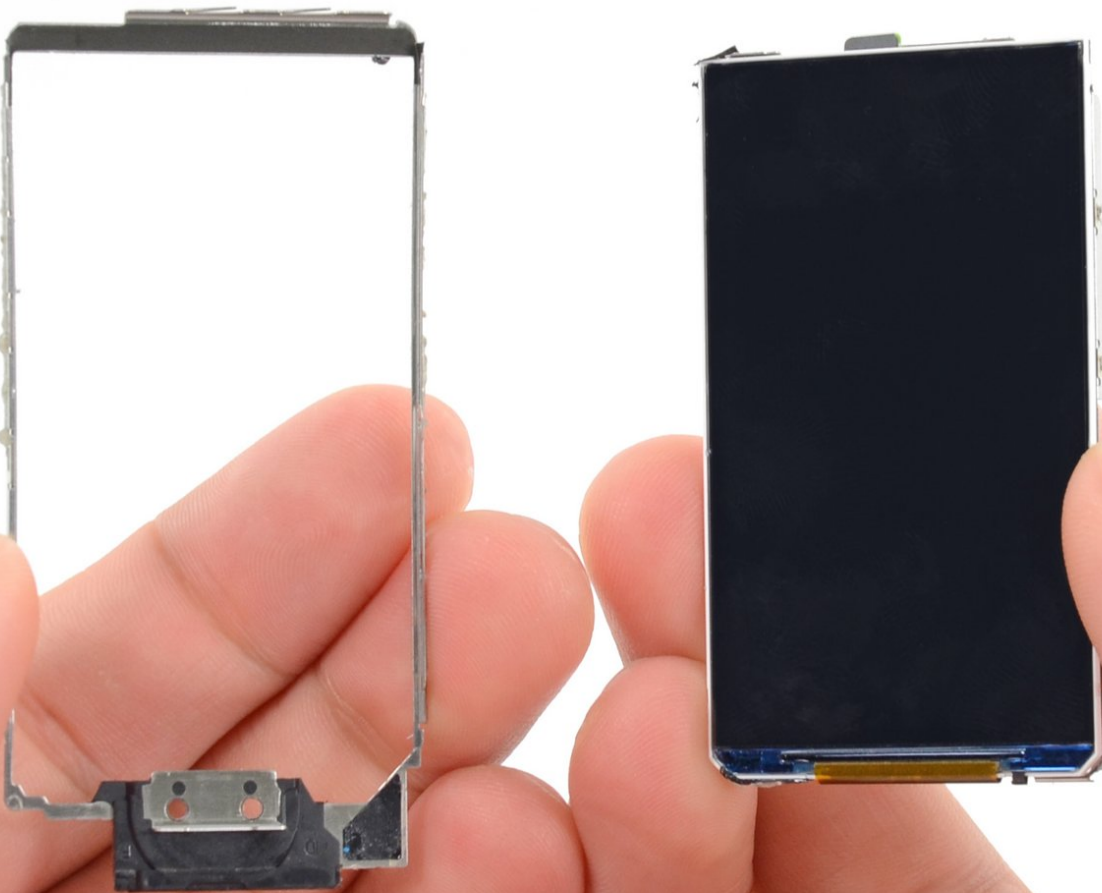




iPod Nano 7th Generation Display Replacement

Replace the LCD display in a 7th Generation iPod Nano.

Written By: Sam Goldheart



INTRODUCTION

Use this guide to replace a broken or faulty LCD display in your 7th Generation iPod Nano.

TOOLS:

- [iOpener](#) (1)
 - [Phillips #000 Screwdriver](#) (1)
 - [iFixit Opening Tools](#) (1)
 - [Spudger](#) (1)
 - [Metal Spudger](#) (1)
-

Step 1 — iOpener Heating



-  We recommend that you clean your microwave before proceeding, as any nasty gunk on the bottom may end up stuck to the iOpener.
- Place the iOpener in the center of the microwave.
-  For carousel microwaves: Make sure the plate spins freely. If your iOpener gets stuck, it may overheat and burn.

Step 2




- Heat the iOpener for **thirty seconds**.
- Throughout the repair procedure, as the iOpener cools, reheat it in the microwave for an additional thirty seconds at a time.

- ⚠ Be careful not to overheat the iOpener during the repair. Overheating may cause the iOpener to burst.
- ⚠ Never touch the iOpener if it appears swollen.
- ⚠ If the iOpener is still too hot in the middle to touch, continue using it while waiting for it to cool down some more before reheating. A properly heated iOpener should stay warm for up to 10 minutes.

Step 3



- Remove the iOpener from the microwave, holding it by one of the two flat ends to avoid the hot center.

 The iOpener will be very hot, so be careful when handling it. Use an oven mitt if necessary.

Step 4 — Front Panel Assembly



- Lay the iOpener over the plastic tab to loosen the adhesive. Let the bag sit on the device for approximately 90 seconds before attempting to open the panel.

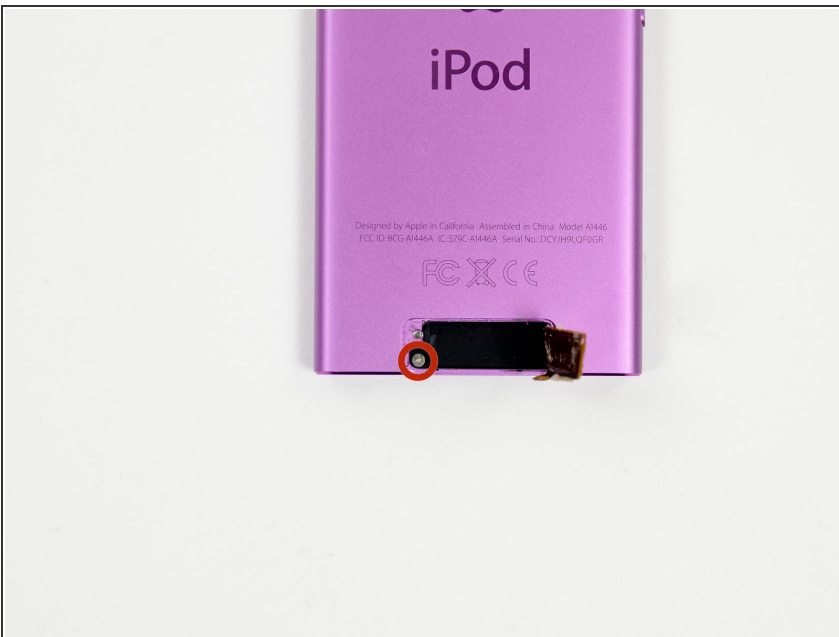
Step 5



- Use a plastic opening tool to pull the rear plastic cover away from the device until there is enough room to insert a spudger.
- Insert a spudger under the cover, then pry it up and away from the device.
- Remove the rear plastic cover from the iPod.

⚠ Be very careful in removing the plastic cover as the bluetooth antenna is adhered to it.

Step 6



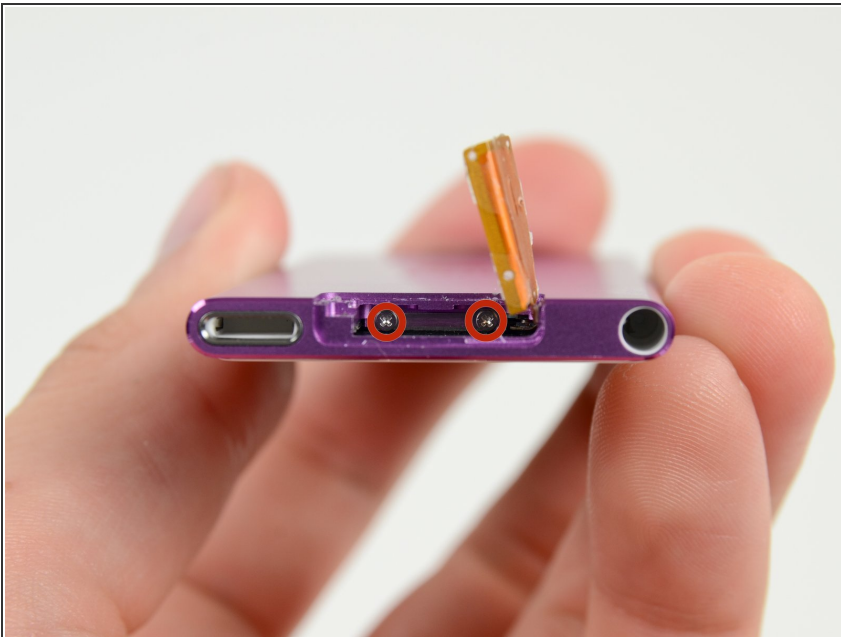
- ⓘ Gently bend the Bluetooth antenna to the right, out of the way of the screws in the bottom of the device.
- Remove the single 1.4 mm Phillips #000 screw from the black plastic spacer.

Step 7



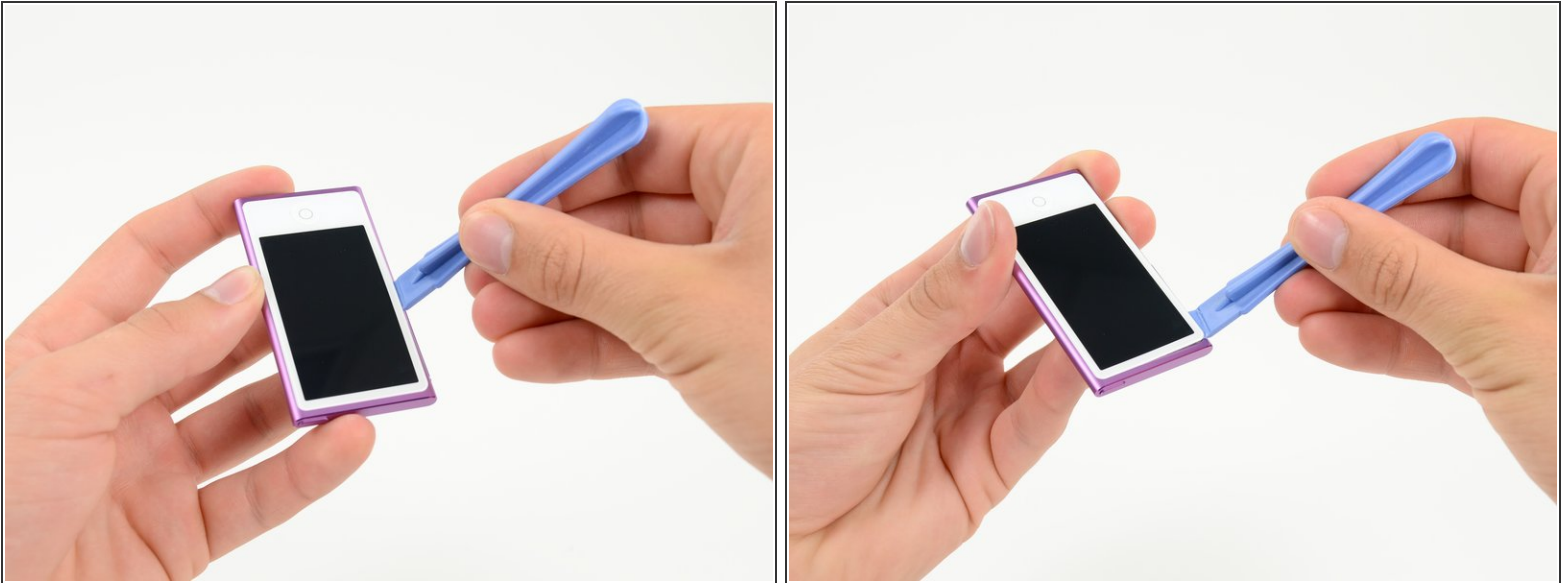
- Use a plastic opening tool to remove the black plastic spacer from the Nano.

Step 8



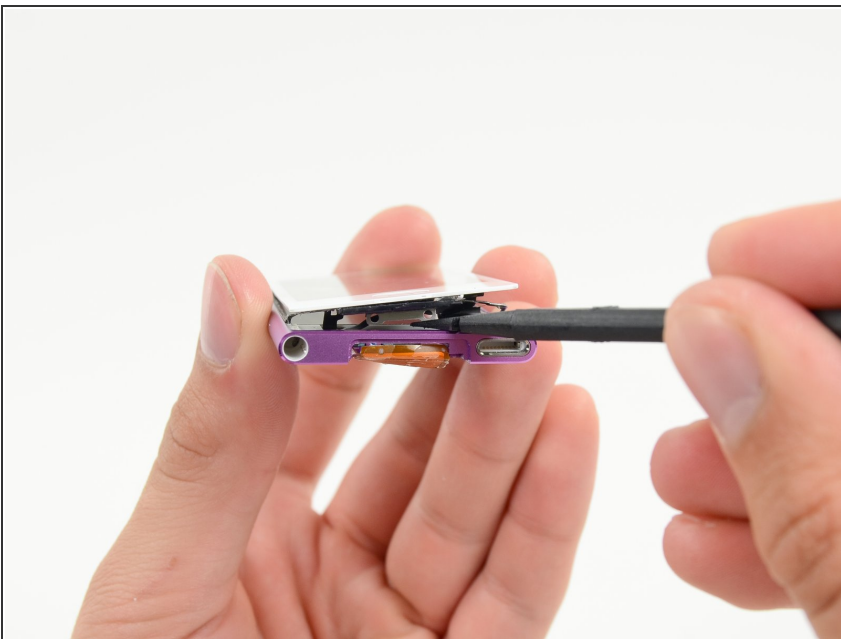
- Remove the two 2 mm Phillips #000 screws from the bottom of the case.

Step 9



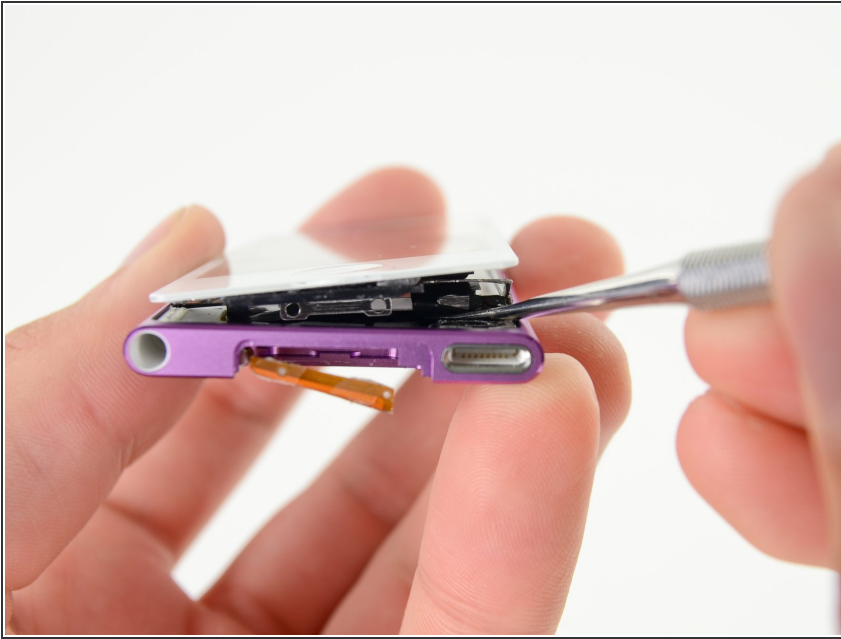
- Insert a plastic opening tool into the seam between the white plastic front panel and the rear case.
- Slide the opening tool along the edge of the front panel to free it from clips and adhesive.

Step 10



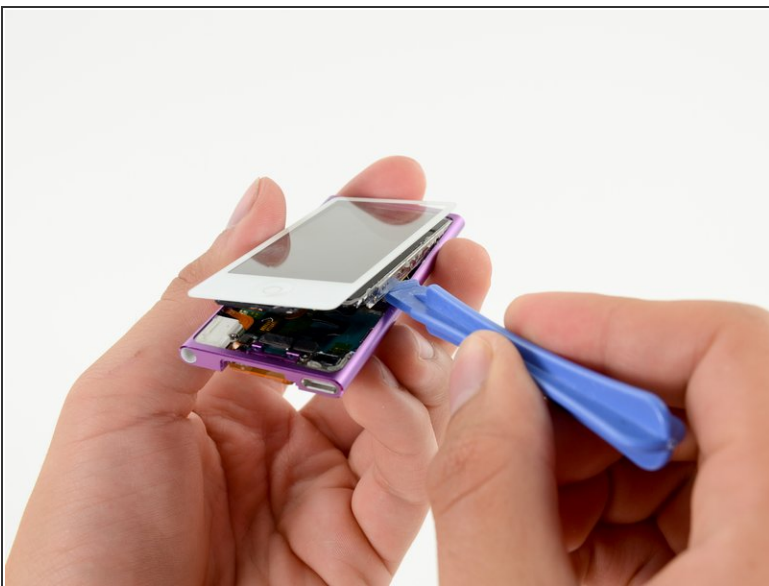
- Use a spudger to press the midframe screw tab up and out of the rear case.

Step 11



- Use a metal spudger to carefully pry near the Lightning connector and under **all** parts of the front panel assembly: the front glass/digitizer, the LCD display and the metal midframe.
- ⓘ The adhesive under the metal midframe/display assembly is quite strong and the components are fragile, so go slowly and gently. Make sure you do not bend the LCD screen.

Step 12



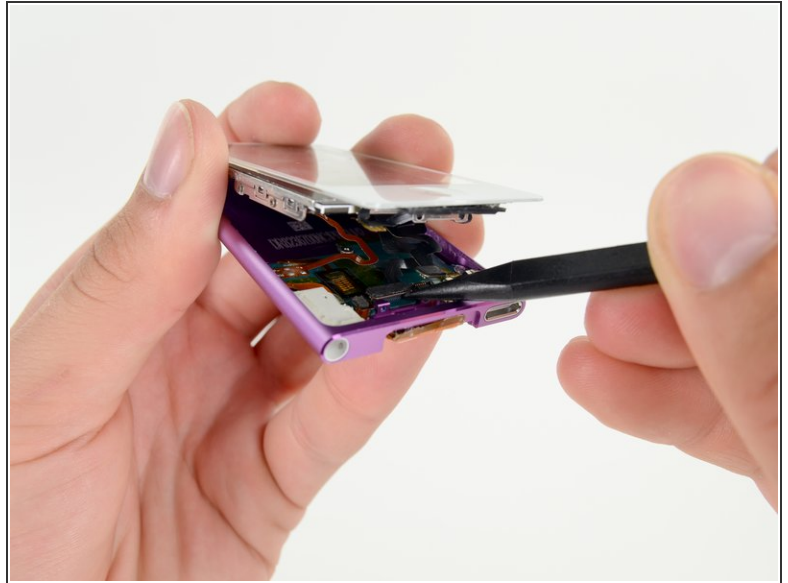
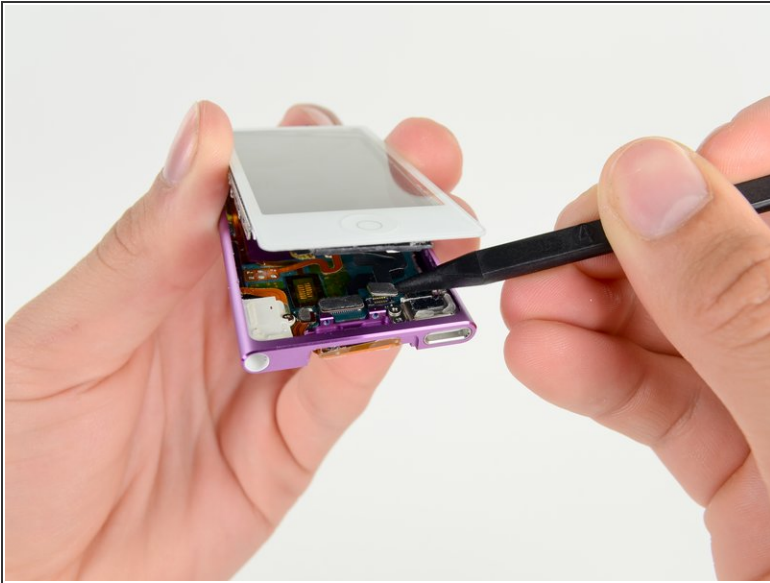
- Continue prying along the edges under the front panel assembly, releasing the clips and adhesive along the sides of the device.

Step 13



- Pull the front panel assembly slightly down and partially out of the device.
- ⓘ You only need to open the device enough to gain access to the display cable connectors near the sleep/power button.
- ⚠ **Do not** separate the two halves entirely, they are still connected by several cables.

Step 14



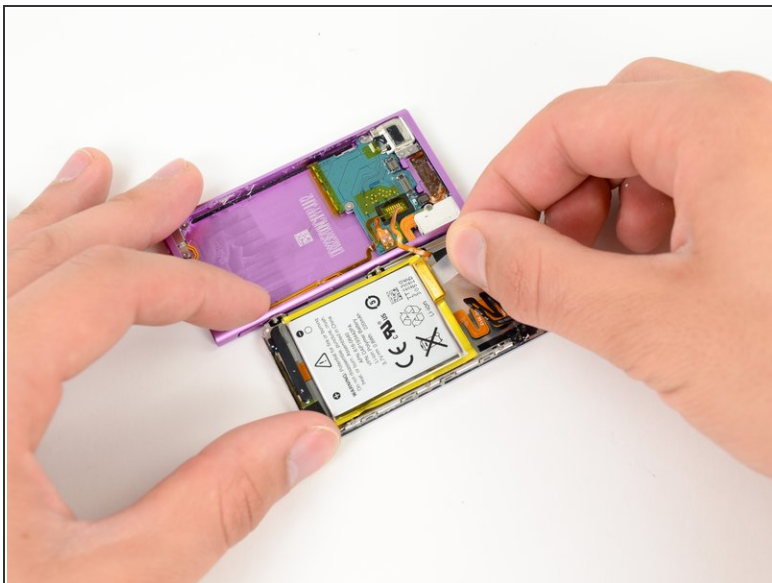
- Use a spudger to release the digitizer cable and display data cable connectors.

Step 15



- Gently unfold the two halves of the device to access the internal components.
- ⚠ **Do not** try to completely separate the two sections, yet, as they are still attached via a soldered cable.

Step 16



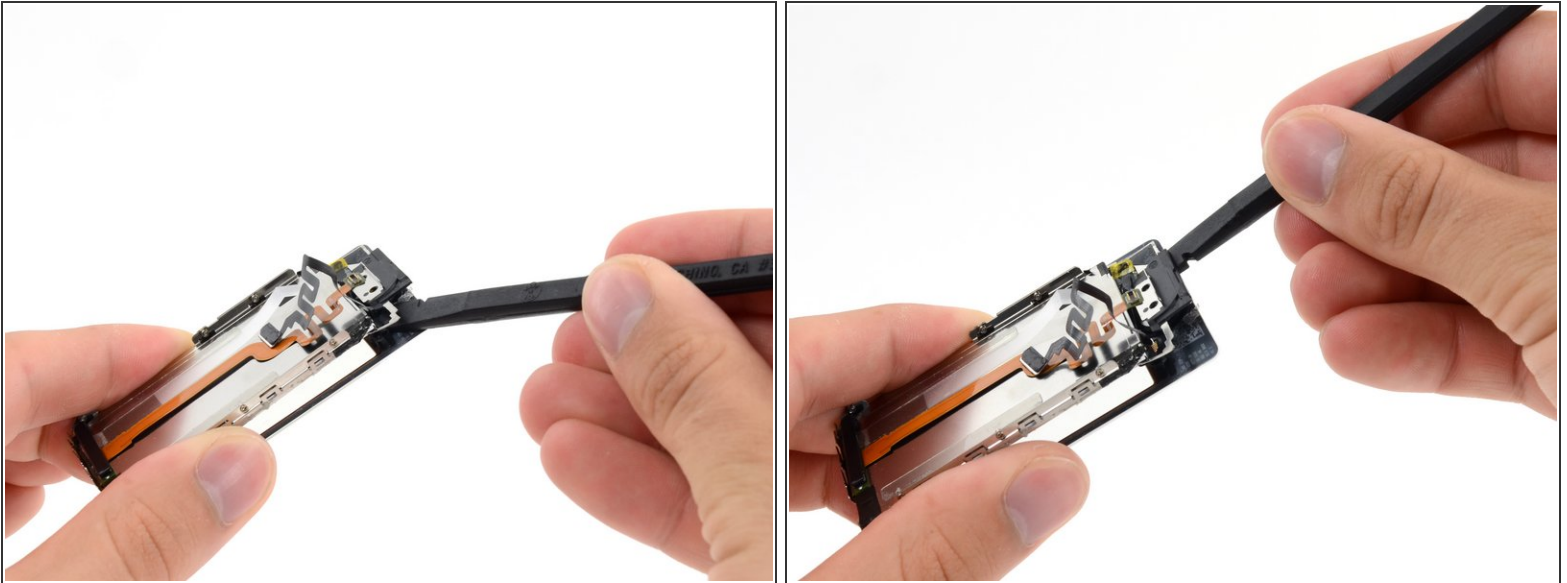
- Pull up on the battery pull tab to free the battery from its adhesive.
- ⓘ Flip the battery over into the rear case for safekeeping.

Step 17



- Completely separate the front panel assembly from the rest of the device.

Step 18 — Display Assembly



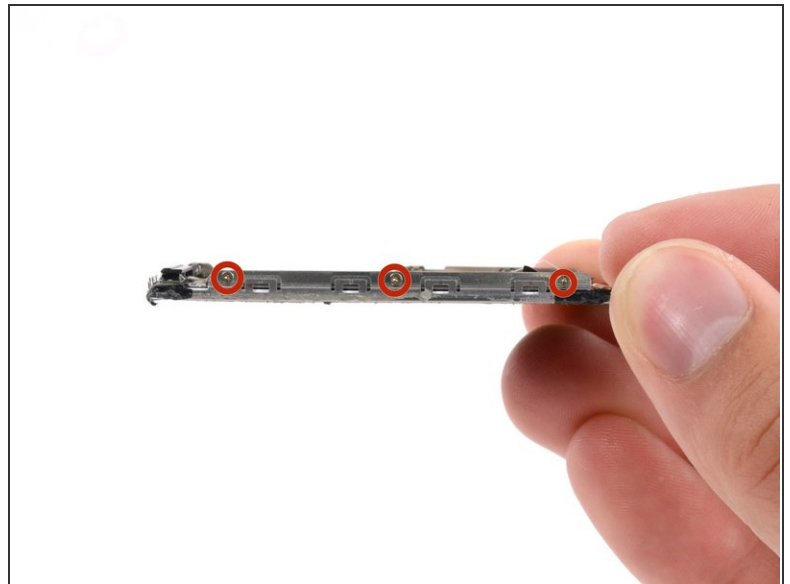
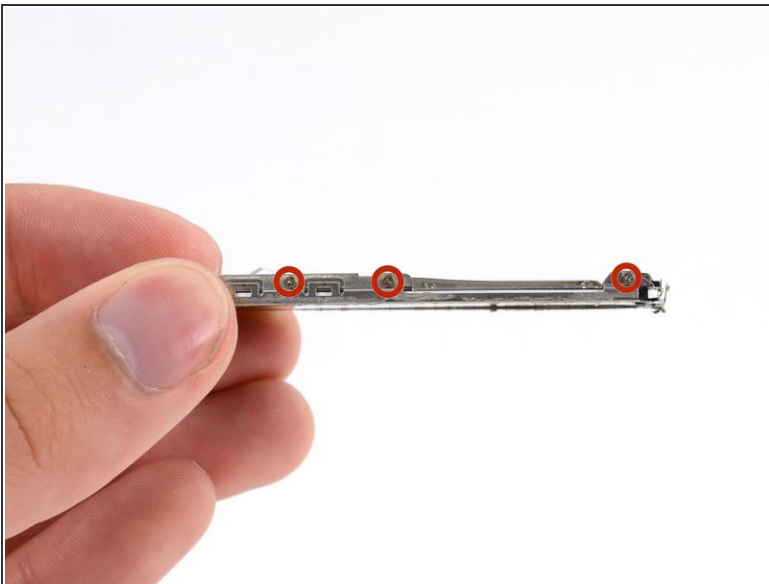
- Insert a spudger under the metal midframe and display on the left side of the home button.
- ⓘ Make sure that the spudger is under the entire display assembly to prevent bending the metal midframe.
- Rotate the spudger around the home button and across the front panel, releasing the adhesive holding the display in place.

Step 19



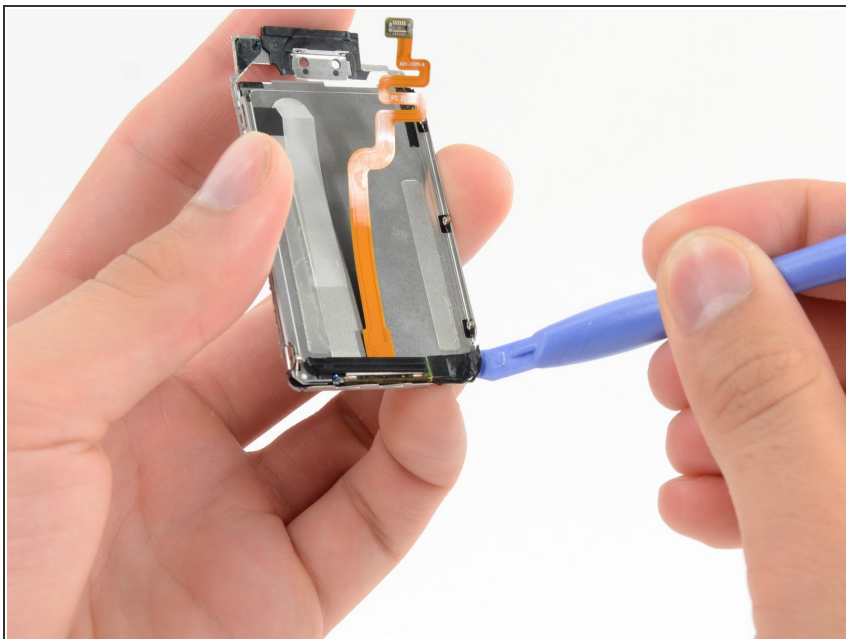
- Once all of the adhesive has been released, gently separate the display assembly from the front glass/digitizer.

Step 20 — Display



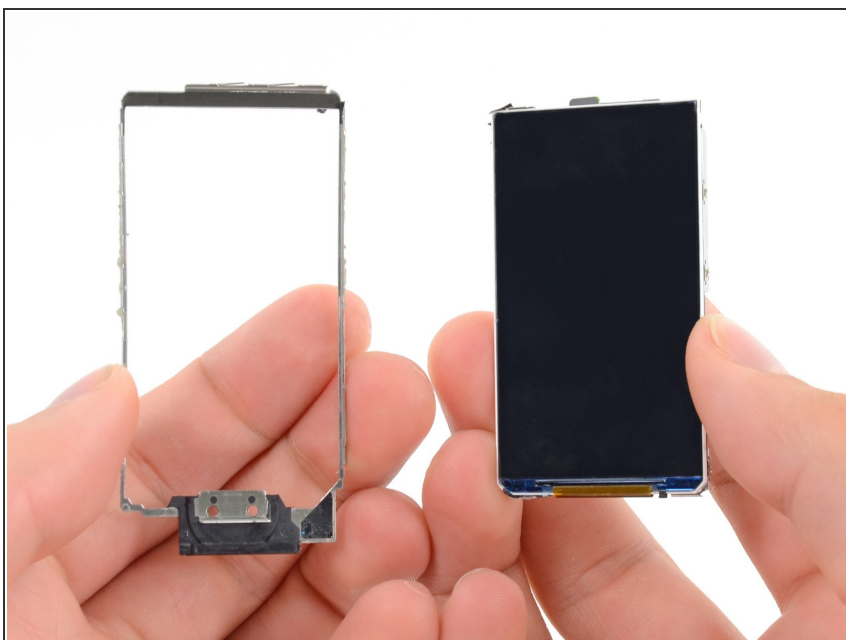
- Remove the six (three on each side) 1.5 mm Phillips #000 screws securing the metal midframe to the display.

Step 21



- If there is tape holding the midframe to the display, remove it with a plastic opening tool.

Step 22



- Remove the display from the midframe.

To reassemble your device, follow these instructions in reverse order.