



iPod Nano 7th Generation Front Panel Assembly Replacement

Prerequisite to replace the front panel assembly.

Written By: Sam Goldheart





TOOLS:

- [iOpener](#) (1)
- [Spudger](#) (1)
- [iFixit Opening Tools](#) (1)
- [Phillips #000 Screwdriver](#) (1)
- [Metal Spudger](#) (1)

Step 1 — Front Panel Assembly



- Lay the iOpener over the plastic tab to loosen the adhesive. Let the bag sit on the device for approximately 90 seconds before attempting to open the panel.

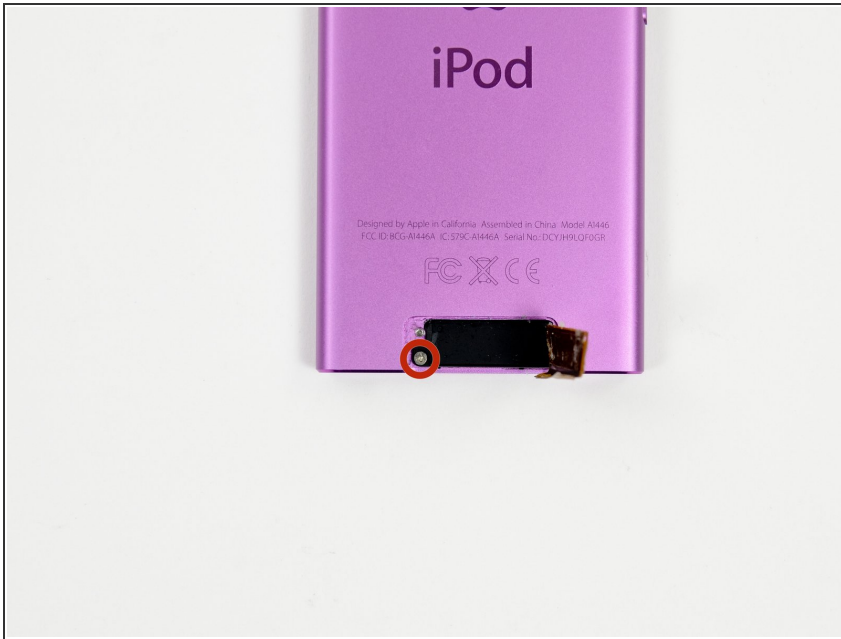
Step 2



- Use a plastic opening tool to pull the rear plastic cover away from the device until there is enough room to insert a spudger.
- Insert a spudger under the cover, then pry it up and away from the device.
- Remove the rear plastic cover from the iPod.

⚠ Be very careful in removing the plastic cover as the bluetooth antenna is adhered to it.

Step 3



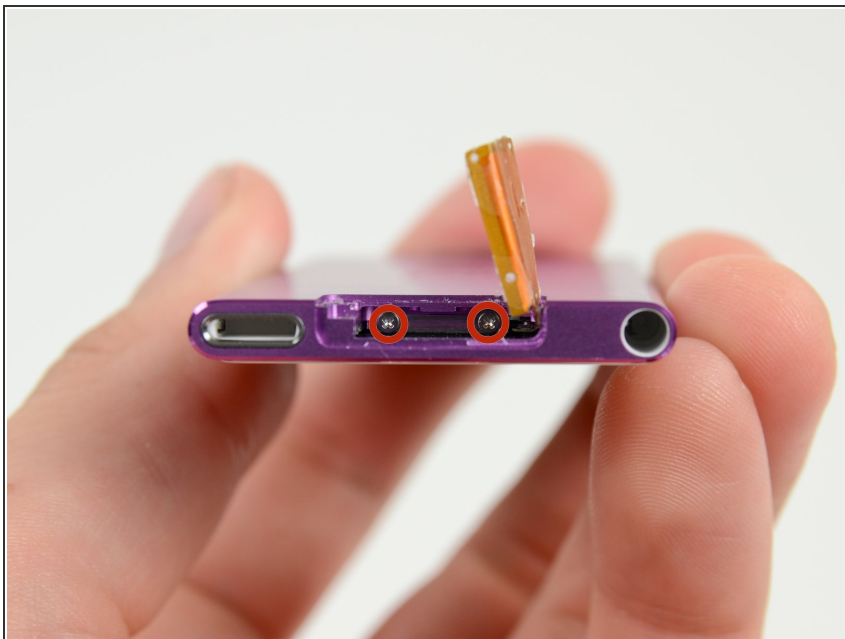
- ⓘ Gently bend the Bluetooth antenna to the right, out of the way of the screws in the bottom of the device.
- Remove the single 1.4 mm Phillips #000 screw from the black plastic spacer.

Step 4



- Use a plastic opening tool to remove the black plastic spacer from the Nano.

Step 5



- Remove the two 2 mm Phillips #000 screws from the bottom of the case.

Step 6



- Insert a plastic opening tool into the seam between the white plastic front panel and the rear case.
- Slide the opening tool along the edge of the front panel to free it from clips and adhesive.

Step 7



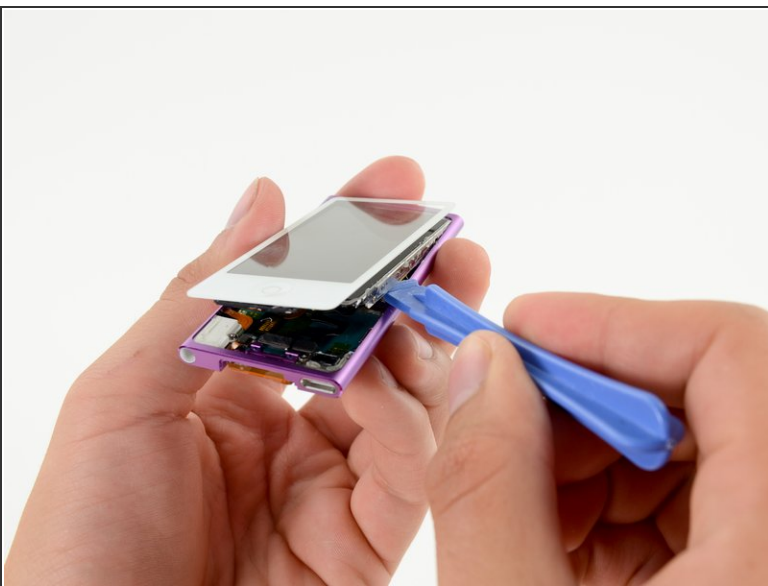
- Use a spudger to press the midframe screw tab up and out of the rear case.

Step 8



- Use a metal spudger to carefully pry near the Lightning connector and under **all** parts of the front panel assembly: the front glass/digitizer, the LCD display and the metal midframe.
- ⓘ The adhesive under the metal midframe/display assembly is quite strong and the components are fragile, so go slowly and gently. Make sure you do not bend the LCD screen.

Step 9



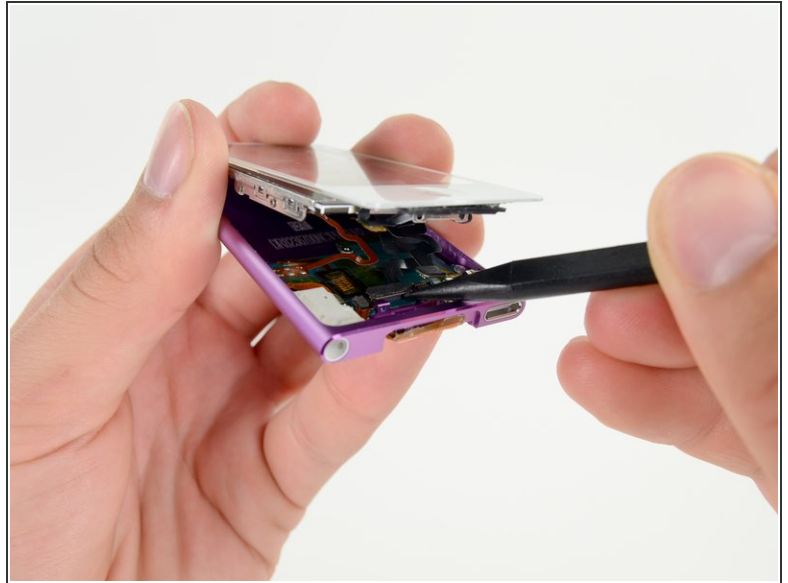
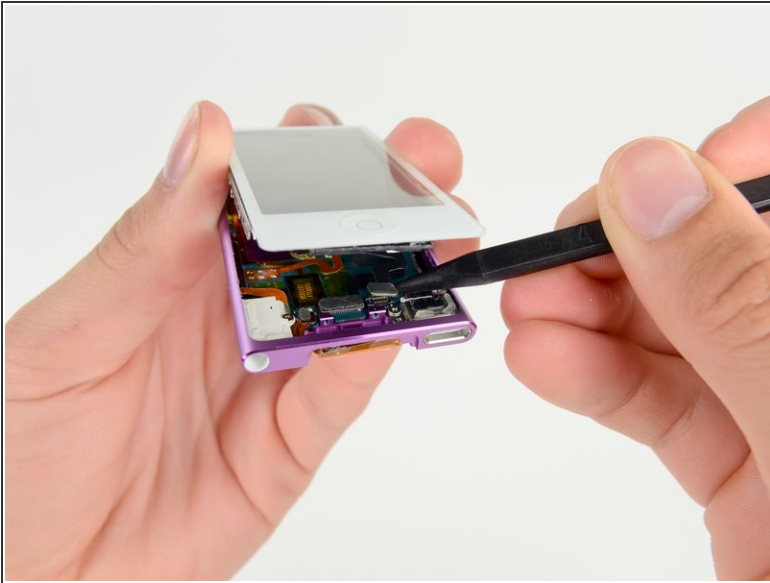
- Continue prying along the edges under the front panel assembly, releasing the clips and adhesive along the sides of the device.

Step 10



- Pull the front panel assembly slightly down and partially out of the device.
- ⓘ You only need to open the device enough to gain access to the display cable connectors near the sleep/power button.
- ⚠ **Do not** separate the two halves entirely, they are still connected by several cables.

Step 11



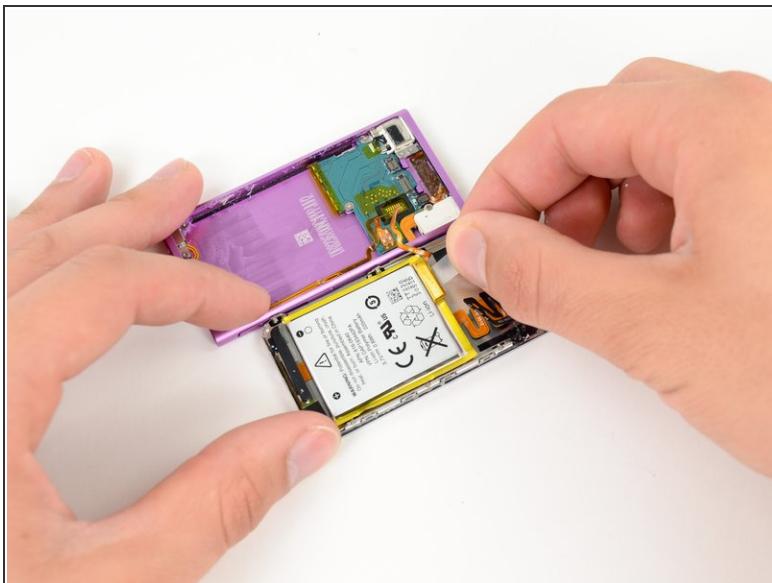
- Use a spudger to release the digitizer cable and display data cable connectors.

Step 12



- Gently unfold the two halves of the device to access the internal components.
- ⚠ **Do not** try to completely separate the two sections, yet, as they are still attached via a soldered cable.

Step 13



- Pull up on the battery pull tab to free the battery from its adhesive.
- ⓘ Flip the battery over into the rear case for safekeeping.

Step 14



- Completely separate the front panel assembly from the rest of the device.

To reassemble your device, follow these instructions in reverse order.