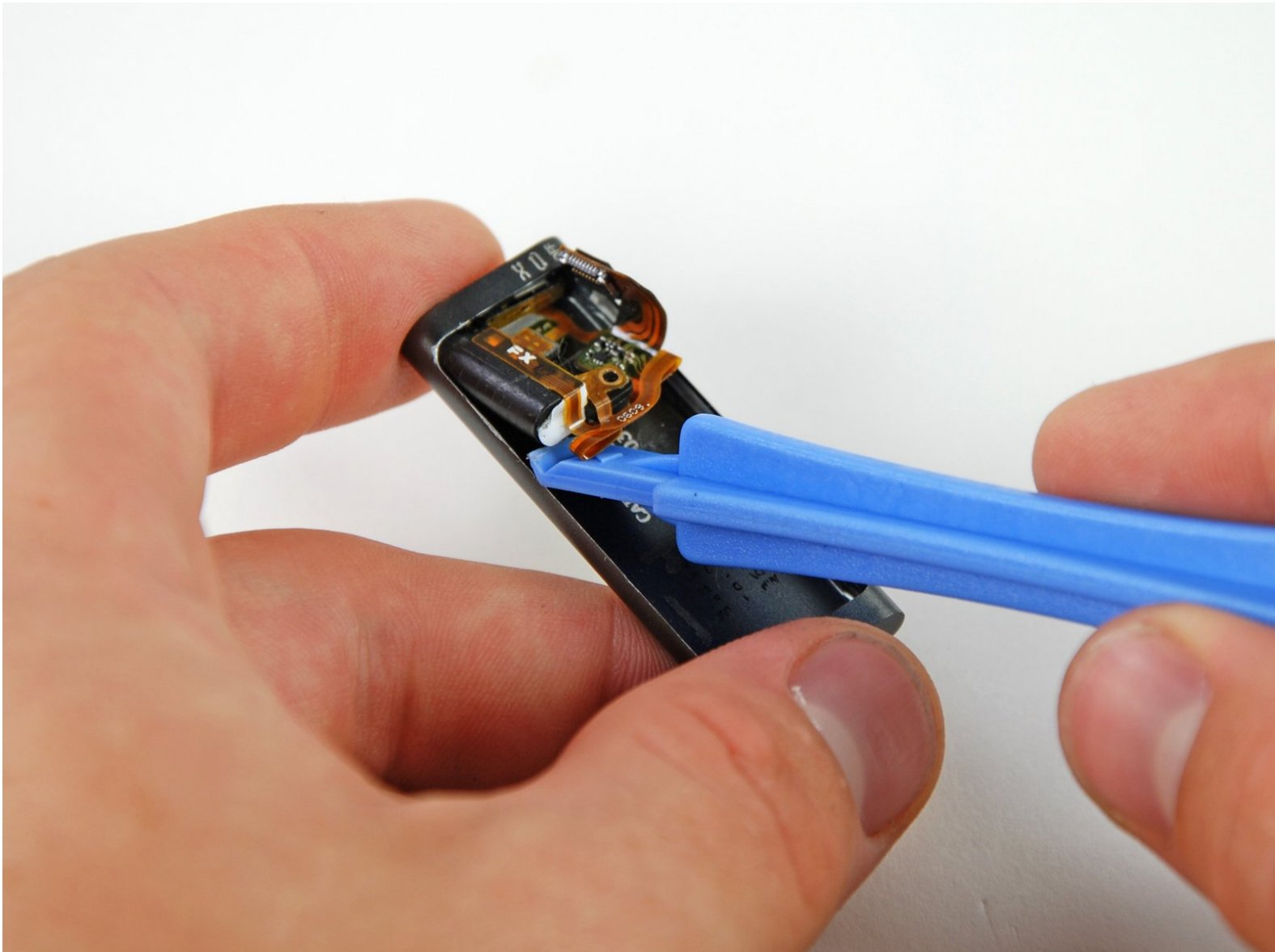




# iPod Shuffle 3rd Generation Headphone Jack & Shuffle Switch Replacement

Headphone jack and shuffle switch replacement.

Written By: Matthew Newsom



# INTRODUCTION

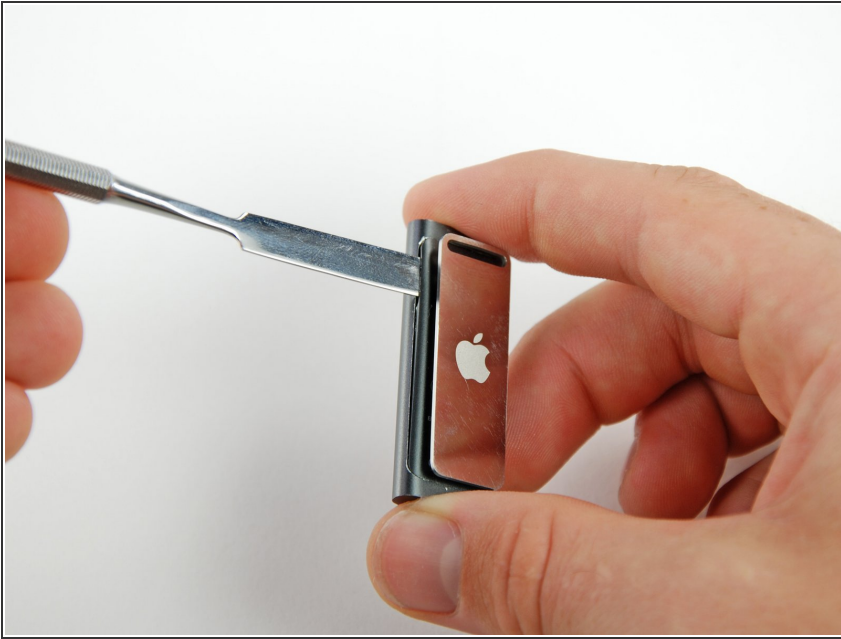
Replace the damaged headphone jack to hear those sweet tunes again.




## TOOLS:

- [Metal Spudger](#) (1)
  - [Phillips #000 Screwdriver](#) (1)
  - [iFixit Opening Tools](#) (1)
  - [Spudger](#) (1)
-

## Step 1 — Rear Case



- Widen the small gap between the front and rear case by inserting a metal spudger into the gap near the top of the iPod.

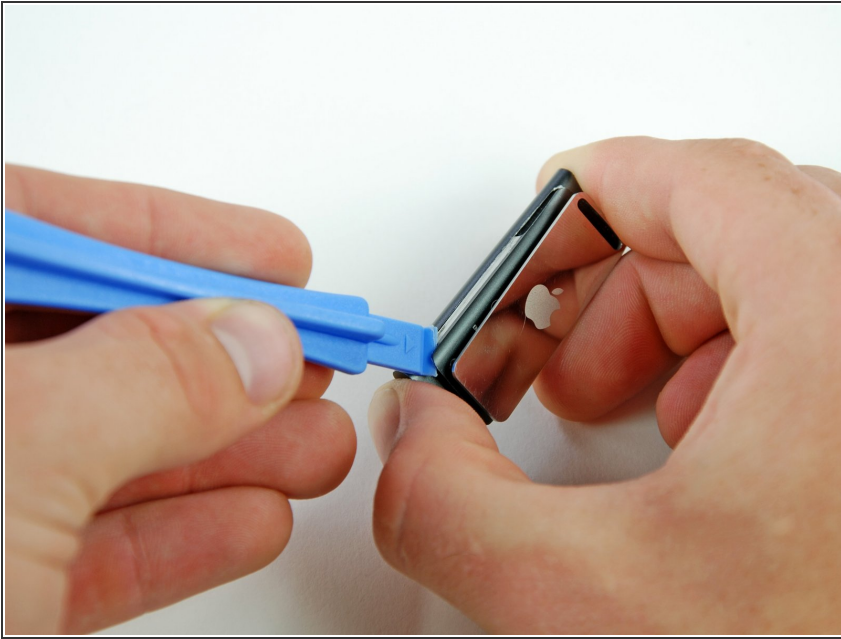
 Be careful when using a metal spudger, as you may scratch the outer case.

## Step 2



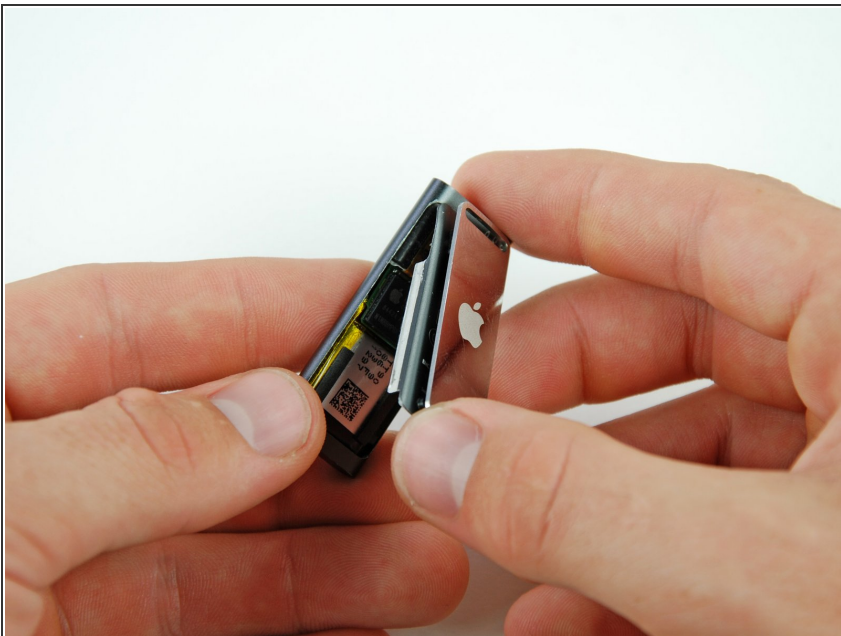
- Insert an iPod opening tool into the newly widened gap, and pry the rear case up and away from the front case.

### Step 3



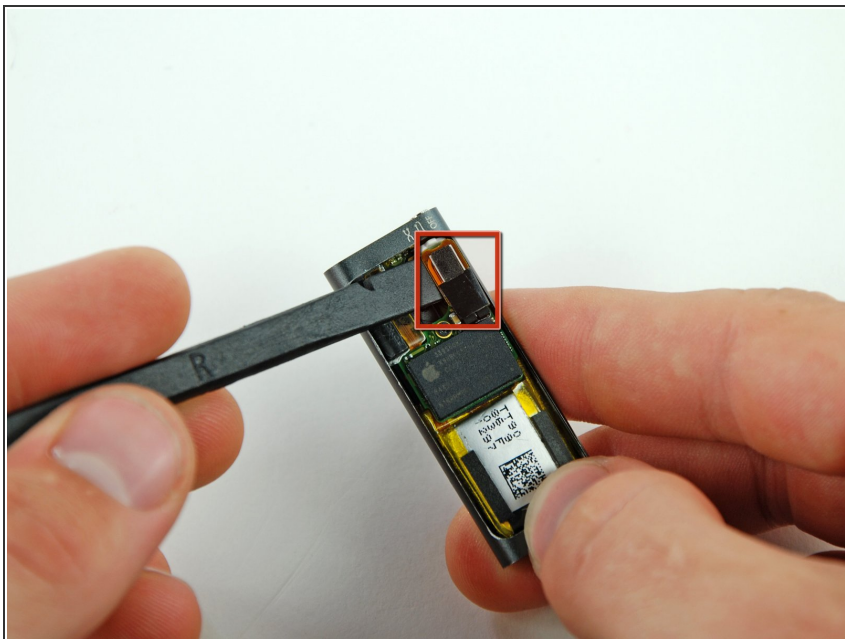
- Insert the iPod Shuffle opening tool into the gap between the front and rear case on the same side, at the bottom corner of the iPod.
- Pry the rear case away from the front case.

### Step 4



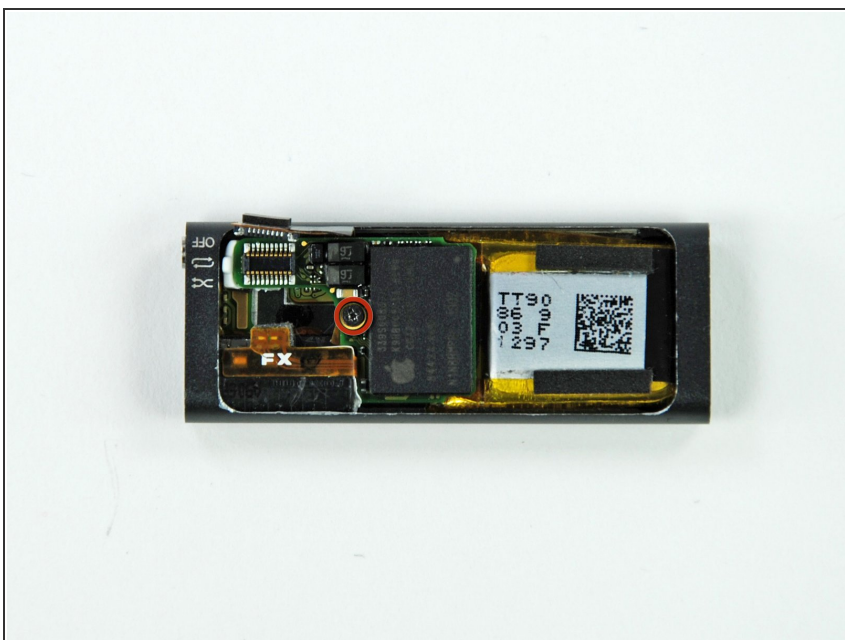
- Lift the bottom of the rear case and remove it from the rest of the iPod.

## Step 5 — Logic Board



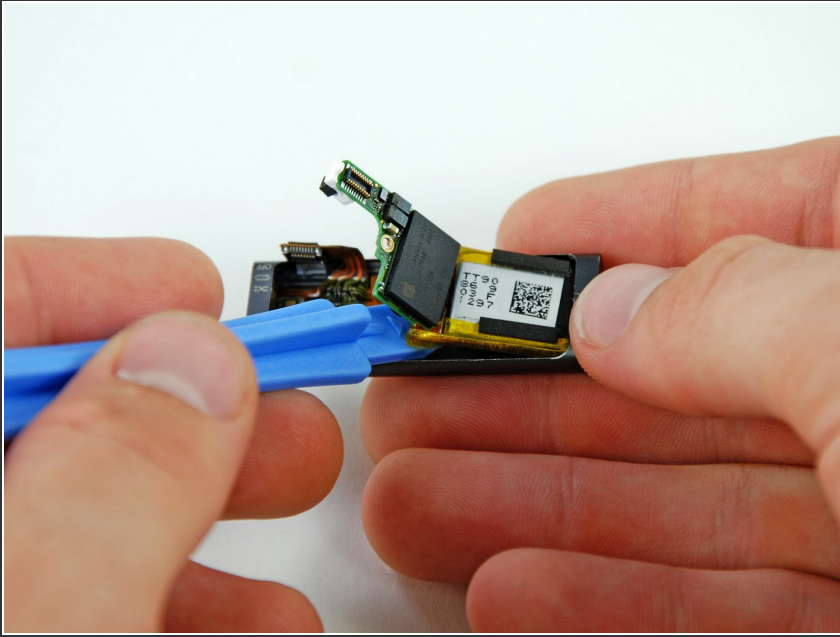
- Disconnect the headphone jack and shuffle switch connector by prying it off the logic board with a spudger.

## Step 6



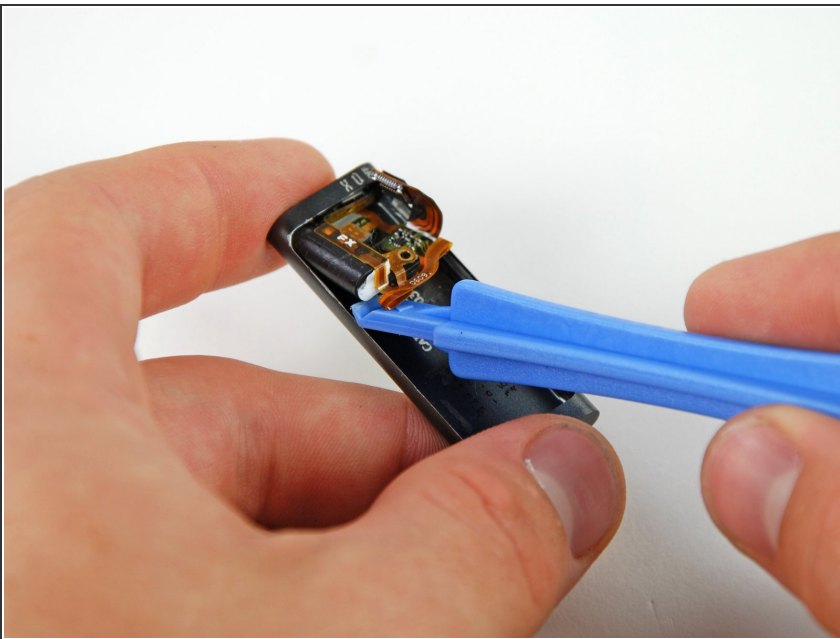
- Remove the single Phillips screw securing the logic board to the front case.

## Step 7



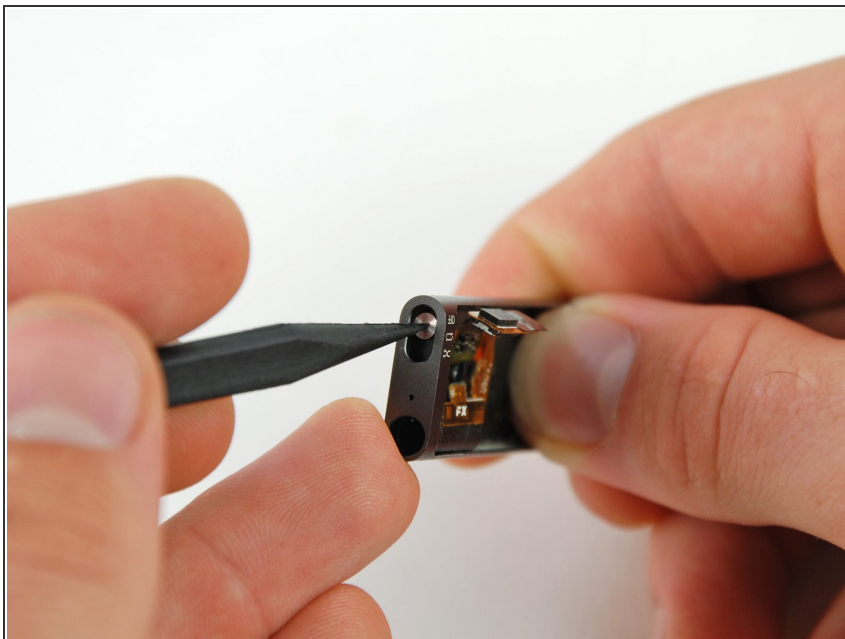
- Peel the battery up from the front case with an iPod opening tool.
- Remove the logic board and battery from the iPod.

## Step 8 — Headphone Jack & Shuffle Switch



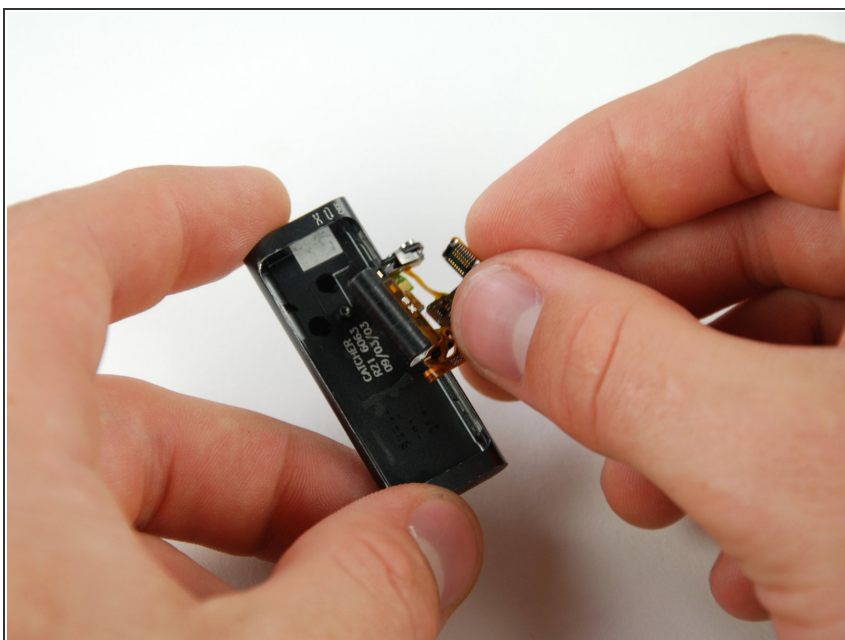
- Pry the headphone jack from the front case with an iPod opening tool.
- ⚠ Don't attempt to remove the headphone jack yet, it is connected to the shuffle switch.

## Step 9



- Using the pointed tip of a spudger, push the shuffle switch in to separate it from the front case.

## Step 10



- Remove the headphone jack and shuffle switch from the front case.

To reassemble your device, follow these instructions in reverse order.