



# iPod Touch 3rd Generation Front Panel Replacement

Front panel replacement.

Written By: Andrew Bookholt



## INTRODUCTION

[video: [http://www.youtube.com/watch?v=\\_mH3OZ0rUdw](http://www.youtube.com/watch?v=_mH3OZ0rUdw)]

Remove the glass front panel to access your Touch's internals.



### TOOLS:

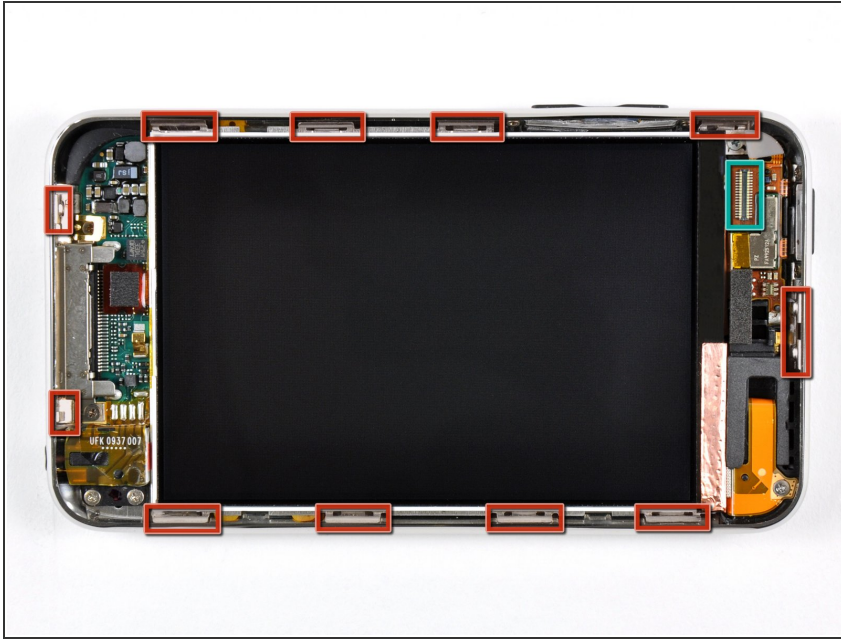
- [iFixit Opening Tools](#) (1)



### PARTS:

- [iPod touch \(3rd Gen\) Front Panel Assembly](#) (1)

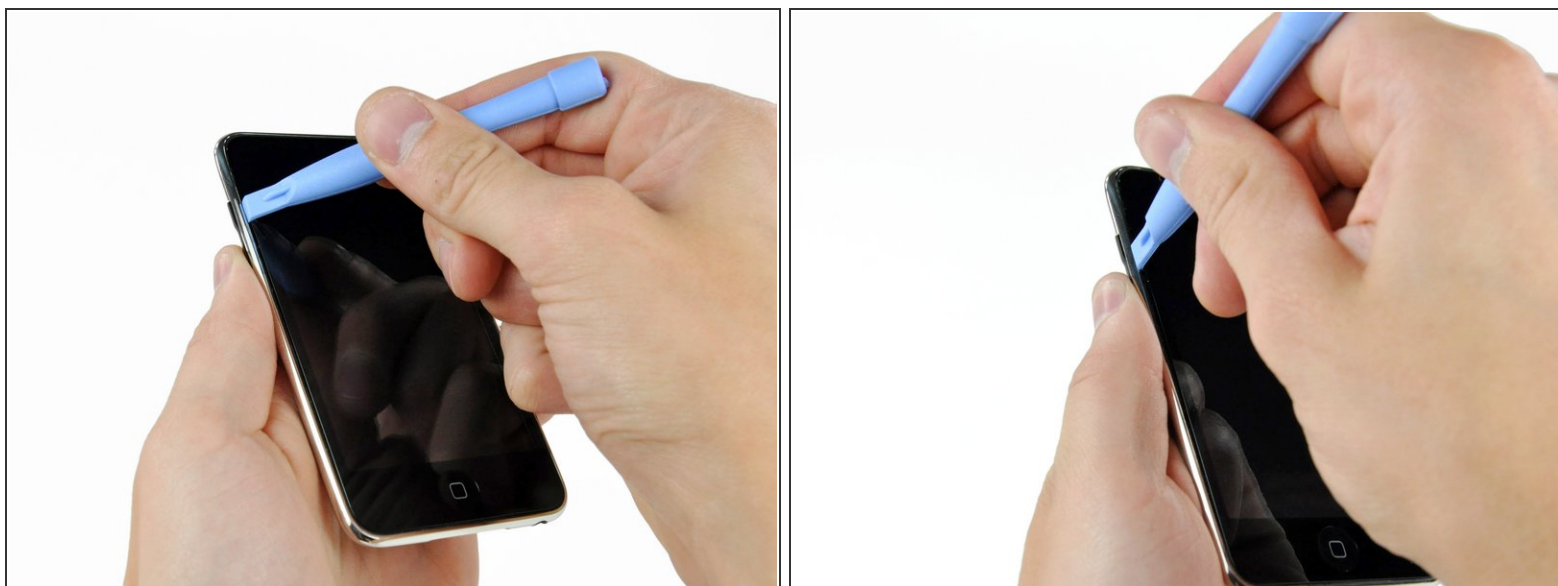
## Step 1 — Front Panel



- i** The glass front panel on the third generation Touch has a plastic frame glued both to its outer edge and also under the wide black strips at the top and bottom of the device.
- The picture at left (front panel already removed) shows the locations of the metal clips (shown in red) that snap on to the plastic frame. In the next few steps, try to pry the front panel up from the gaps between these clips.

**!** Also, be mindful of the very thin and delicate touch screen ribbon cable (connector location shown in green) attaching the front panel to the upper left corner of the Touch.

## Step 2



- Gently insert an iPod opening tool between the glass front panel and its plastic surround near the volume adjust buttons.
- Rotate the tool away from the Touch to pry up on the glass panel.
- ⓘ The key is to work slowly and gently to avoid breaking internal components.

### Step 3



- Insert the iPod opening tool between the front panel and its plastic surround and pry up at several points along the left edge of the Touch.
- ⓘ Do not insert the tool and run it down the edge of the front panel, as it will damage the front panel itself and the rubber strip along the plastic surround. It is best to work at one point, pry up, then remove the tool and reinsert it at the next spot to be pryed up.



## Step 4



- Continue prying up the left edge until the top and bottom edges start to lift out of the Touch.
- Once the top and bottom edges have lifted slightly out of the Touch, use the opening tool to assure the plastic surround is detached from the clips along the inside of the Touch.

## Step 5



- Continue the prying procedure, now focusing on detaching the plastic surround from the internal metal clips.
- Pry along the top edge of the Touch to further separate the front panel from the rest of the device.

## Step 6



- Pry up the front panel along the right edge using the method described in previous steps.
  - Eventually work around the entire perimeter of the front panel until it is lifted slightly from the rear panel.
- ☑ Also, ensure that the plastic surround is separated from the clips in the rear panel.

## Step 7





- Lift the front panel out of the rear case minding the cable still attaching it near the upper left corner of the Touch.


## Step 8




- Use the flat end of a spudger (or an opening tool) to very carefully pry the touch screen cable connector up off the upper logic board.

 The touch screen ribbon cable is extremely fragile! Be very gentle in disconnecting this cable to prevent tearing the ribbon cable.

 Now that the front panel is out, check it for damage. If the plastic surround is not flush with the front face of the glass panel, gently peel it off and stick it down.

 Be careful not to scratch the front panel on the underside of the black portions, as the scratches will be visible once the device is reassembled.

 Be sure to clean both the face of the display and the inner surface of the front panel, as any dust or fingerprints will be trapped inside the Touch once it is fully reassembled.

To reassemble your device, follow these instructions in reverse order.