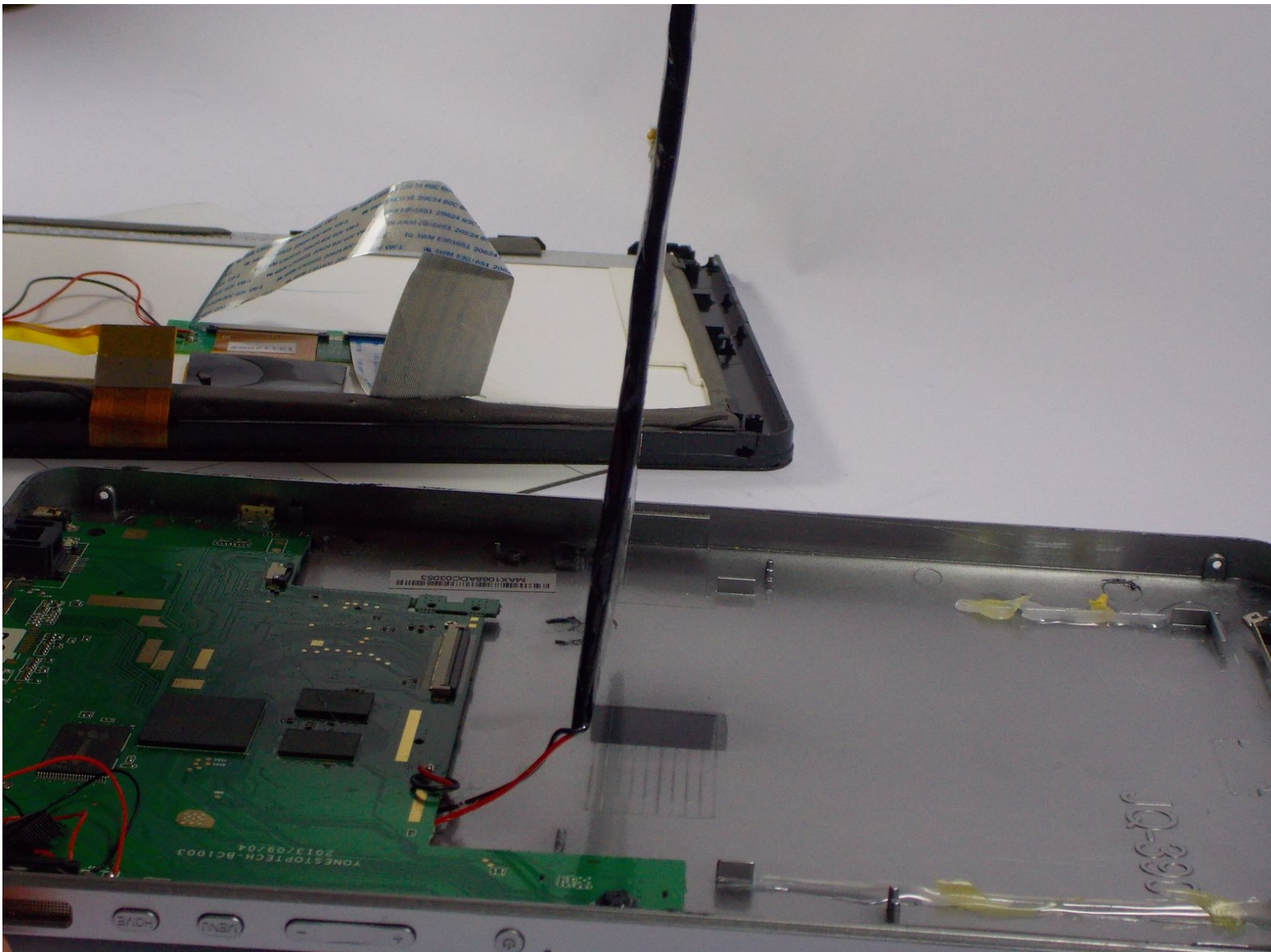




iRULU AX106 Battery Replacement

Use this replacement guide to install a new battery into the iRulu AX106

Written By: James McLean



INTRODUCTION

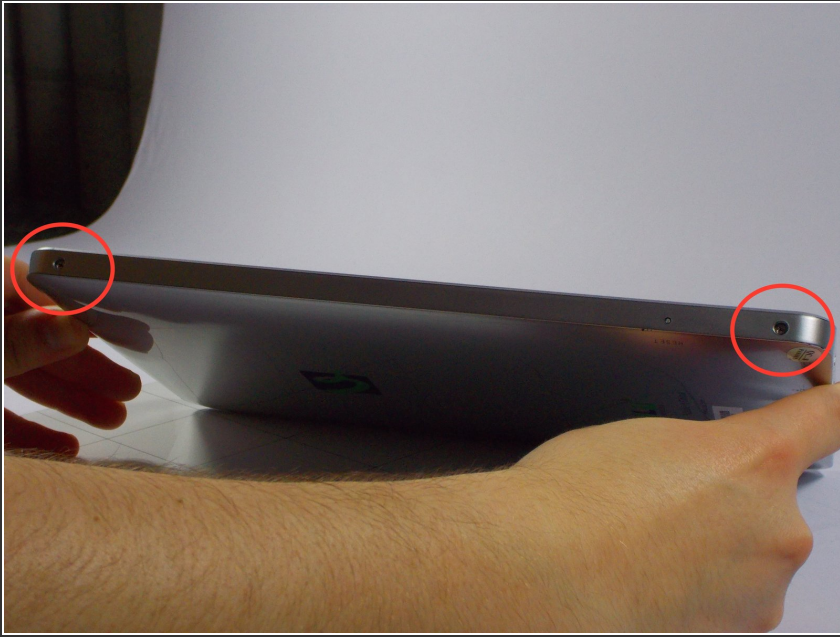
In this replacement guide the user will learn how to disassemble the iRULU down to the logic board, and replace the battery.



TOOLS:

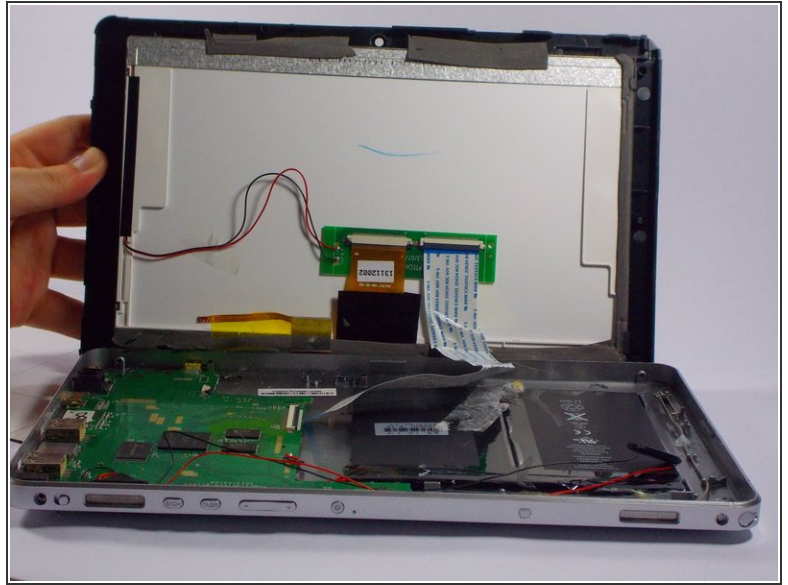
- [iFixit Opening Tools](#) (1)
 - [Soldering Workstation](#) (1)
-

Step 1 — iRULU AX106 Disassembly



- Using a Philips head #00 screwdriver locate and remove each of the four screws located along the tall side of the iRulu.
- ⓘ There may be plastic covers protecting the screws, if this is the case take a phillips head screwdriver, and gently apply pressure on the covers until they come off.

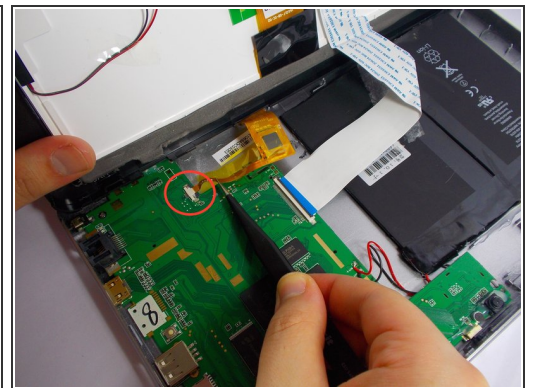
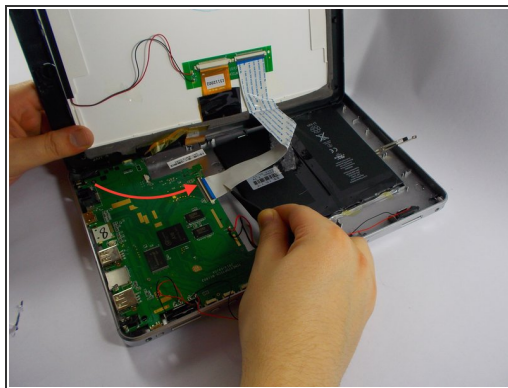
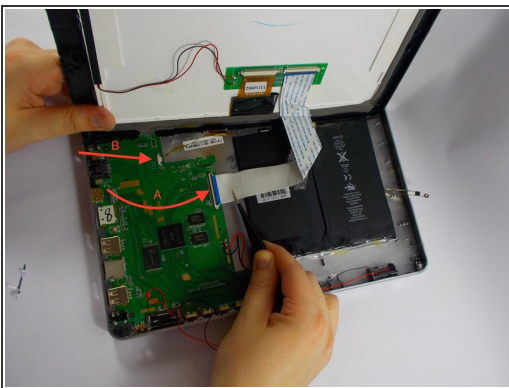
Step 2



- Use the opening tool to pry the screen from the case applying pressure at each of the four corners of the screen.

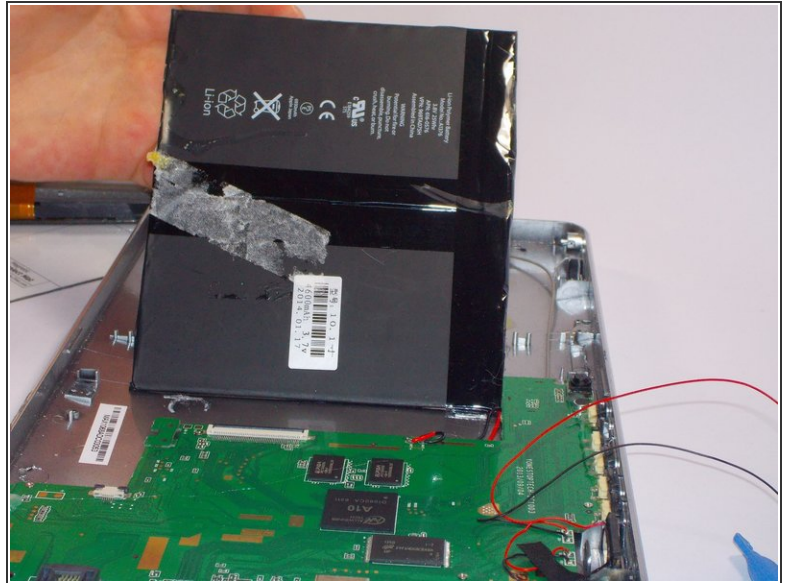
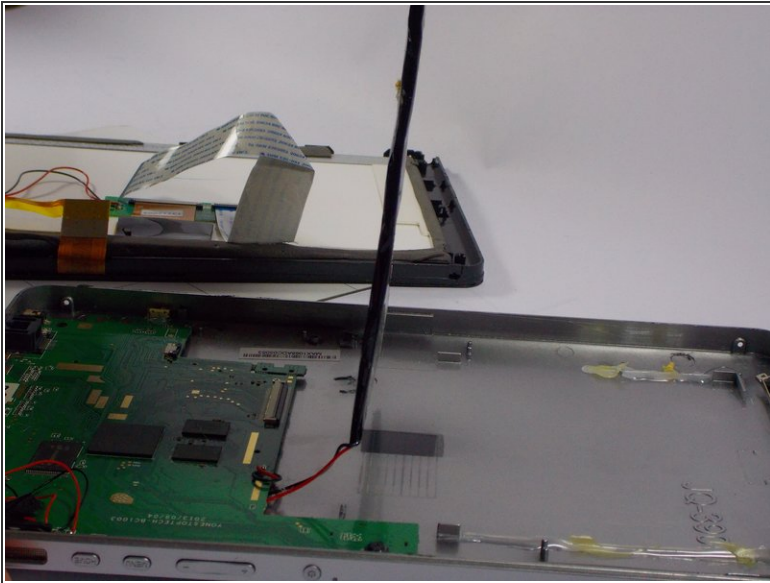
⚠ While a good deal of force is required to separate the screen from the case, make sure to separate the screen from the case at each corner before attempting to completely remove the screen. There are delicate wires that may be damaged if the screen is removed is before the corners are separated.

Step 3



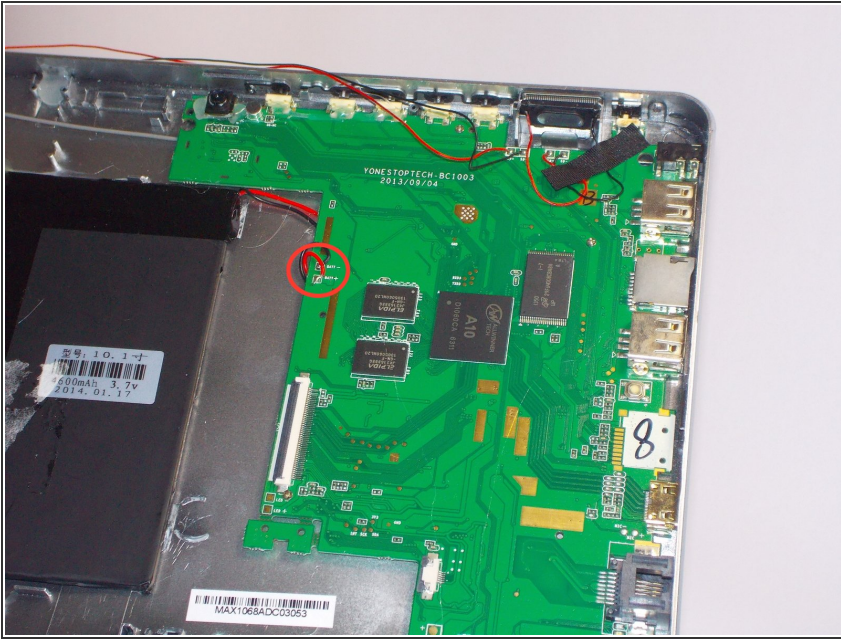
- Using a pair of tweezers, gently unplug connectors A and B from the logic board.
- Completely separate the screen and case.

Step 4 — Battery



- The battery is located right above the logic board, and can be identified as a large flat black rectangle.
- Use the plastic opening to scrape away the glue that is holding down the battery.

Step 5



- You should see that the battery is connected by 2 wires, one black and one red that lead to the logic board.
- ✦ Make note of what color wire is soldered to the respective node before un-soldering the wires.
- Heat up a soldering iron and melt the solder that is connecting the battery to the logic board.
- ⚠ Use a solder sucker to remove the solder as it melts, using caution to remove the wire.
- Completely remove the battery from the device.
- Insert the new battery and re-solder the corresponding wires to their respective locations.

To reassemble your device, follow these instructions in reverse order.