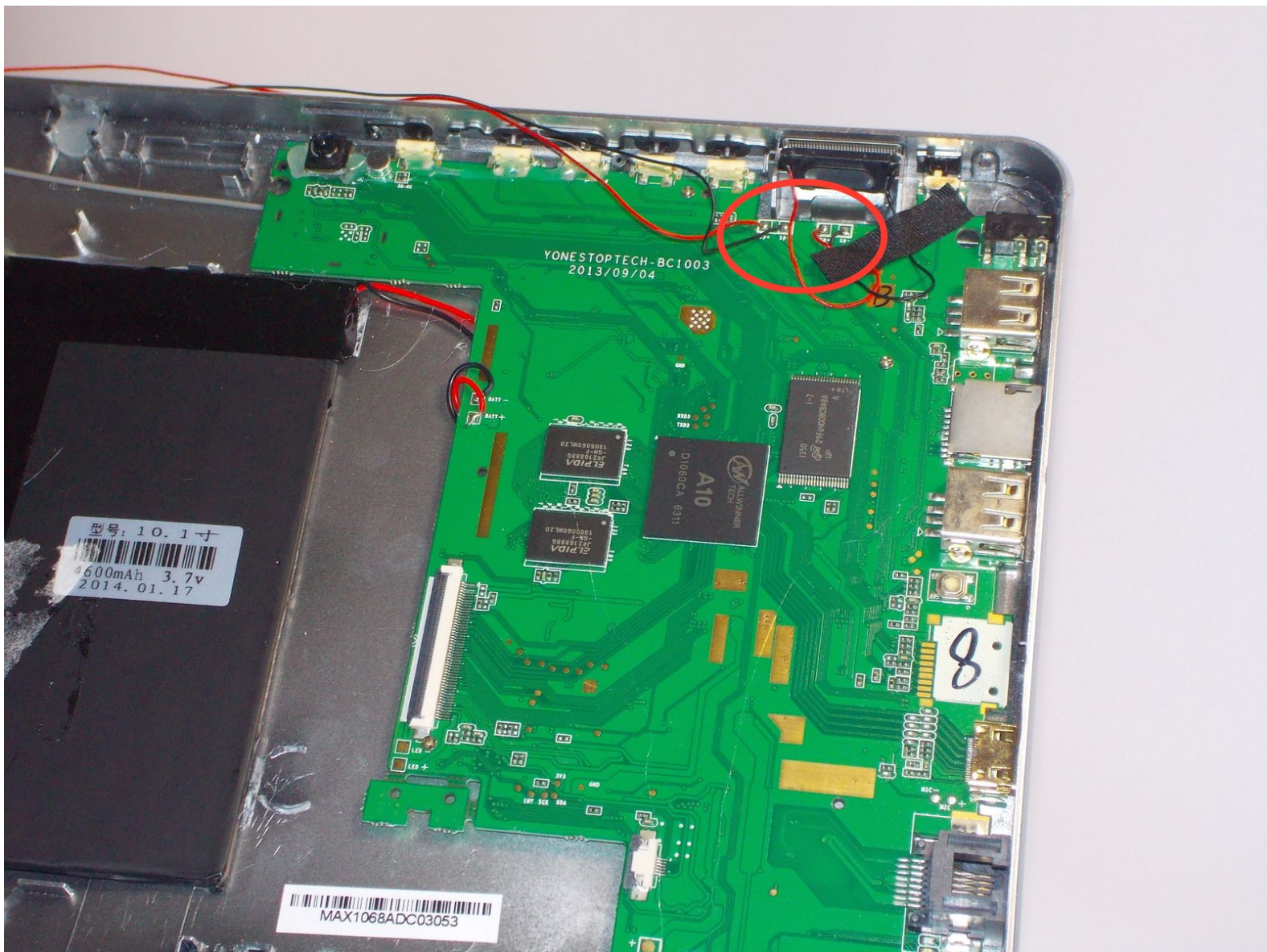




iRULU AX106 Speaker Replacement

In this replacement guide, you will learn how to install new front end speakers into the iRULU AX106

Written By: Andrew Mele

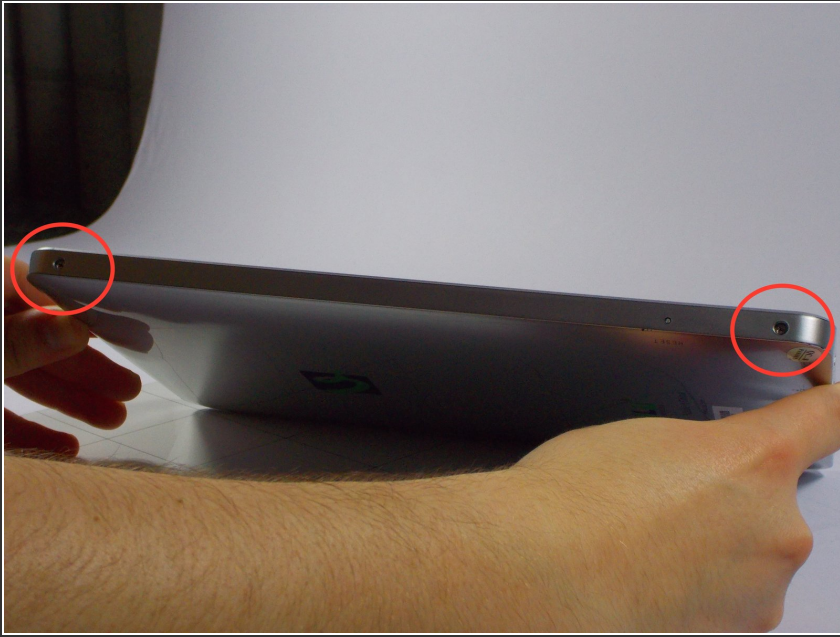




TOOLS:

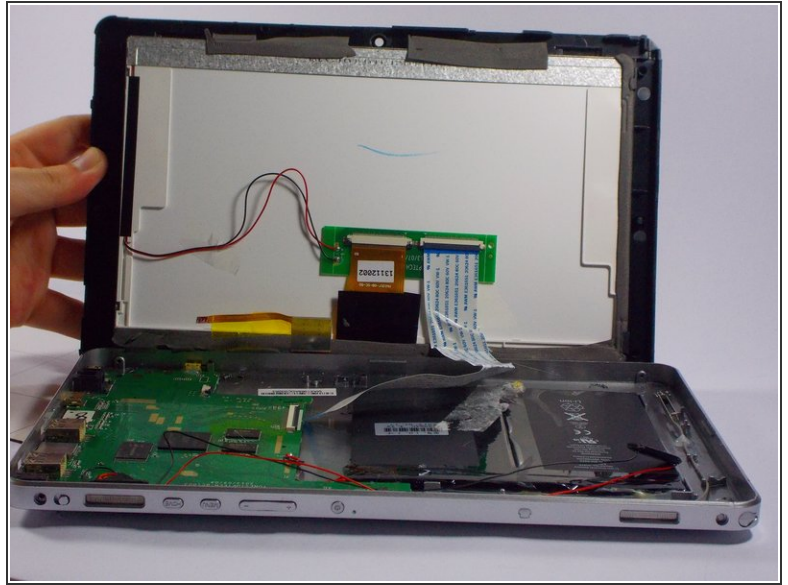
- [Soldering Workstation](#) (1)
-

Step 1 — iRULU AX106 Disassembly



- Using a Philips head #00 screwdriver locate and remove each of the four screws located along the tall side of the iRulu.
- ⓘ There may be plastic covers protecting the screws, if this is the case take a phillips head screwdriver, and gently apply pressure on the covers until they come off.

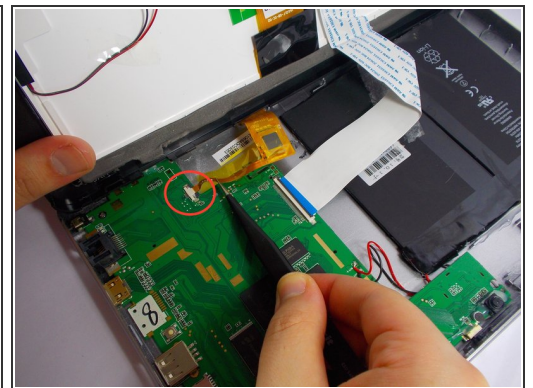
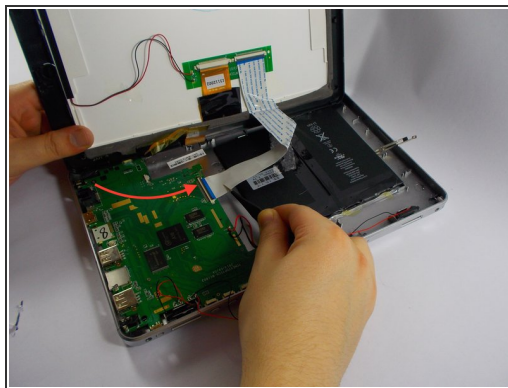
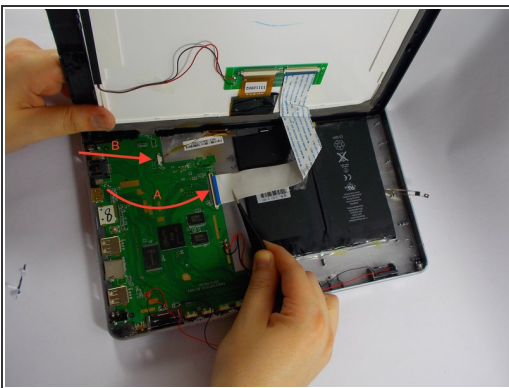
Step 2



- Use the opening tool to pry the screen from the case applying pressure at each of the four corners of the screen.

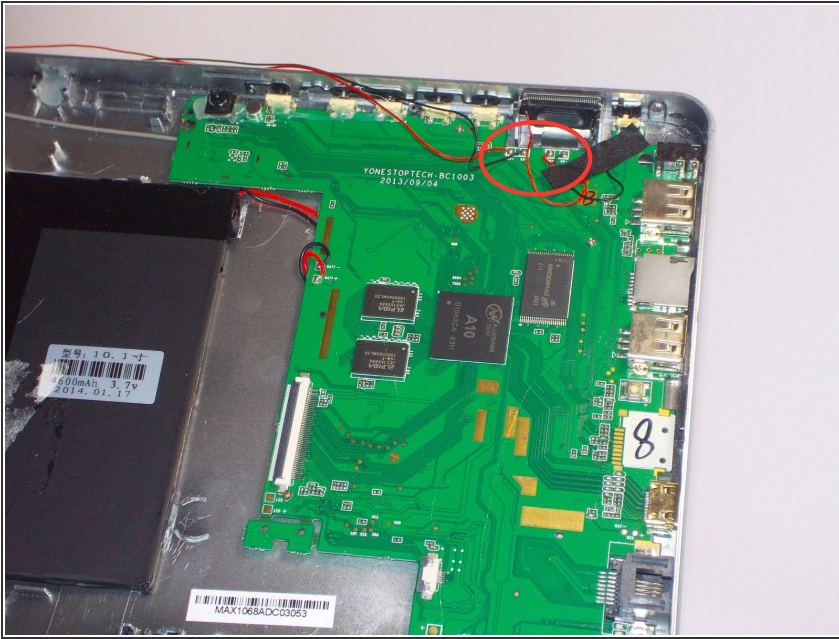
⚠ While a good deal of force is required to separate the screen from the case, make sure to separate the screen from the case at each corner before attempting to completely remove the screen. There are delicate wires that may be damaged if the screen is removed is before the corners are separated.

Step 3



- Using a pair of tweezers, gently unplug connectors A and B from the logic board.
- Completely separate the screen and case.

Step 4 — Speaker



- ⚠ Locate the two speakers and using the soldering iron and solder sucker carefully remove the solder that binds the two speakers down.
- Insert the new speaker heads where the old speakers were previously.
- Now use the soldering iron to solder the leads of the two speakers onto the logic board.
- ⚠ Be careful, the soldering iron will be extremely hot.

To reassemble your device, follow these instructions in reverse order.