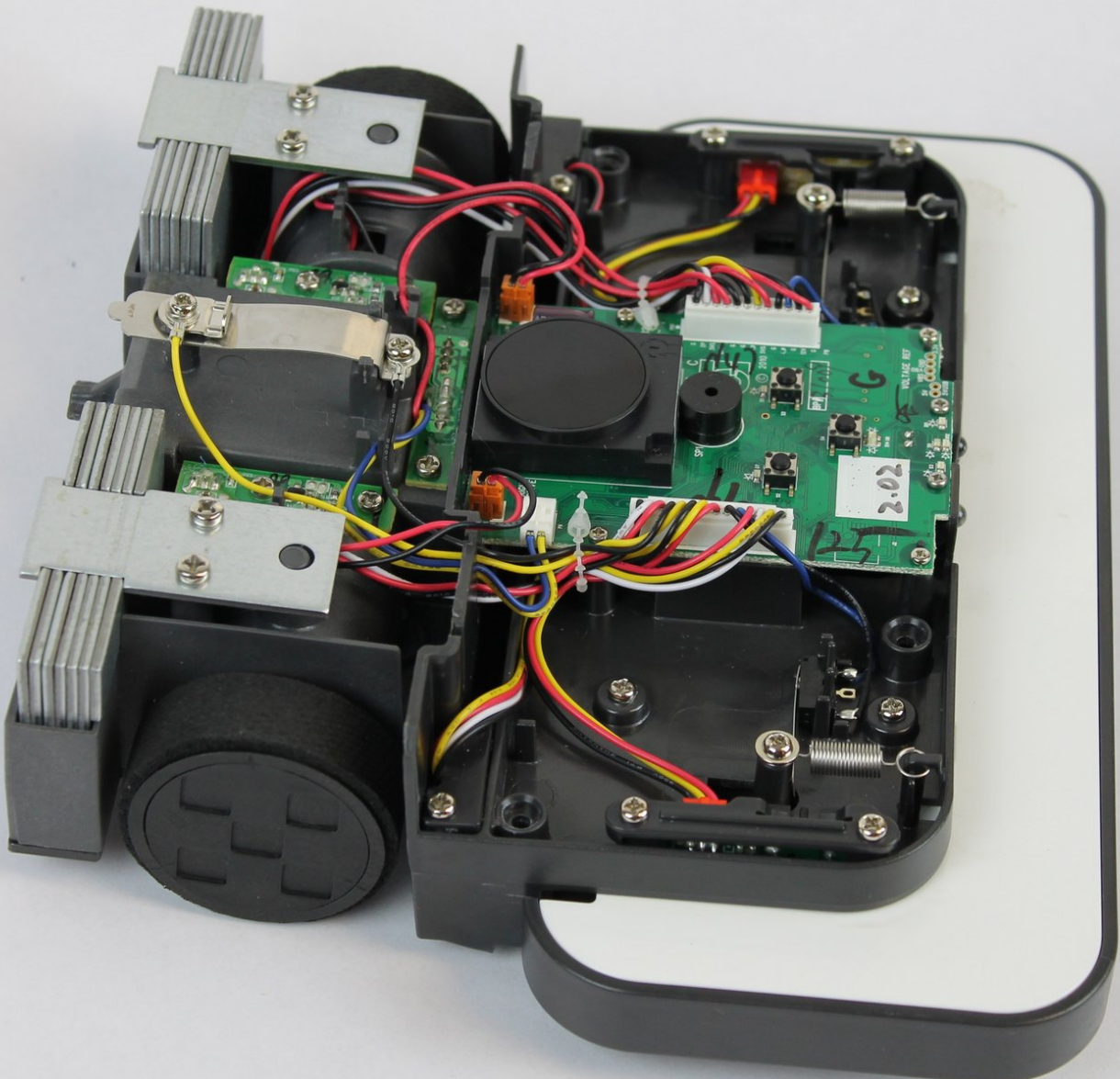




iRobot Braava 320 Wheel Replacement

How to replace a faulty and/or damaged wheel on the iRobot Braava 320.

Written By: Ruven Tapia-Vargas



INTRODUCTION

Without properly functioning wheels, the Braava will have a difficult time navigating. This will lead to inefficient sweeping or mopping. This guide will show how to replace the Braava's wheels.



TOOLS:

- [Flathead Screwdriver](#) (1)
 - [Phillips #2 Screwdriver](#) (1)
 - [Flathead 3/32" or 2.5 mm Screwdriver](#) (1)
- 3/32" or 2.5 mm

Step 1 — Battery



- Flip your device over and locate the battery cover.
- ⓘ The battery cover is located in the center of the device in between both wheels.

Step 2



- Using a Flathead #4 screwdriver, gently turn the 12mm screw that holds the battery cover in.
- ⓘ The screw does not remove, it stays attached to the cover.

Step 3



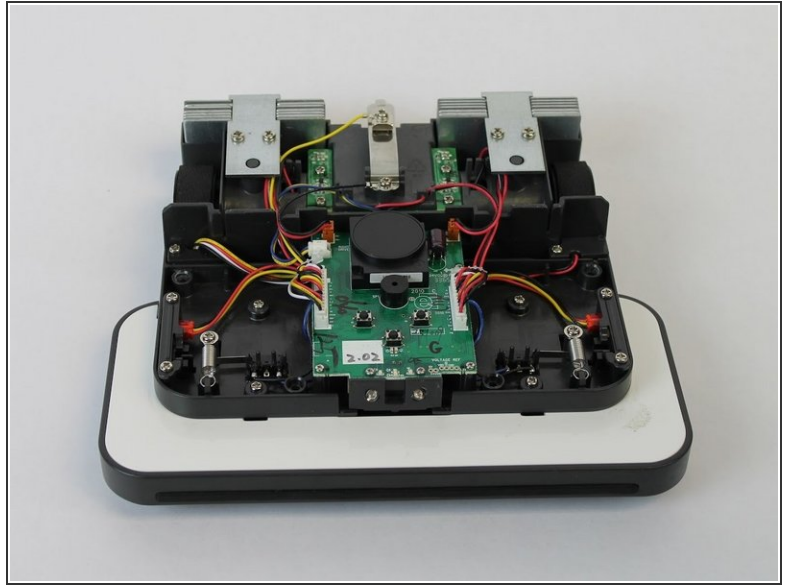
- Gently remove the battery from the tray and disconnect the battery cable.
 - To remove the battery, pull it straight up. To disconnect the cable, gently pull it straight out of the connector.
- ☞ To reinstall the cable, hold it near the end and gently push it in the connector.

Step 4 — Body Shell and Control Panel



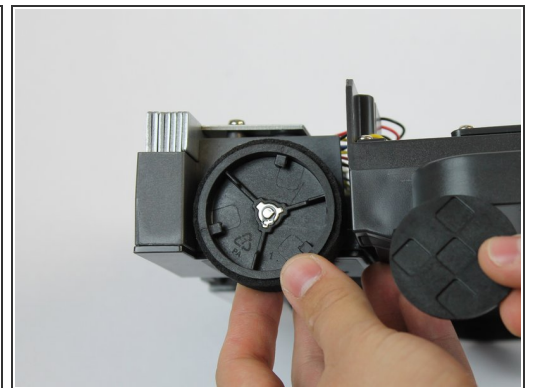
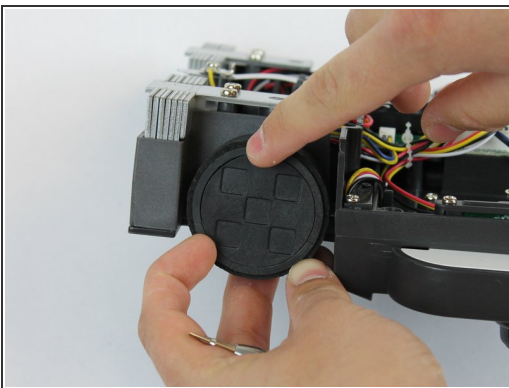
- With the battery removed, rotate your device so the front of it is facing you.
- Remove the four 10mm Phillips #2 screws that attach the shell.

Step 5



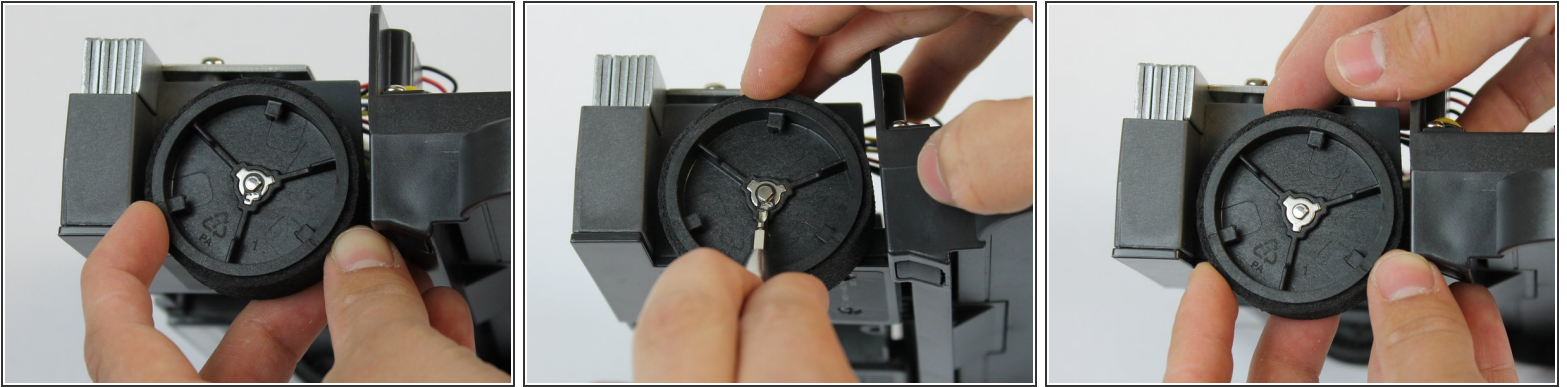
- Using both hands, hold the device together while you flip it over.
- Starting from the front, gently lift up the shell and slowly tilt back until it is fully removed.

Step 6 — Wheel



- To remove the wheel covers, hold the wheel in place with one hand while turning the cover clockwise with the other.
- ❗ The cover should come off as soon as you hear a 'click' sound.
- ☑ When replacing the cover, align the notches on the cover just to the right of the ones on the wheel.

Step 7



- Using a small Flathead screwdriver, remove the small black clip in the center of the wheel.
 - ⓘ To ensure the clip does not fly off, place your hand over the wheel to cover it as you remove the clip.

Step 8



- Once the small black clip is removed, the wheel should come off by gently pulling on it.
 - ⓘ Be careful not to lose the two small chrome pieces located on each side of the wheel.

To reassemble your device, follow these instructions in reverse order.