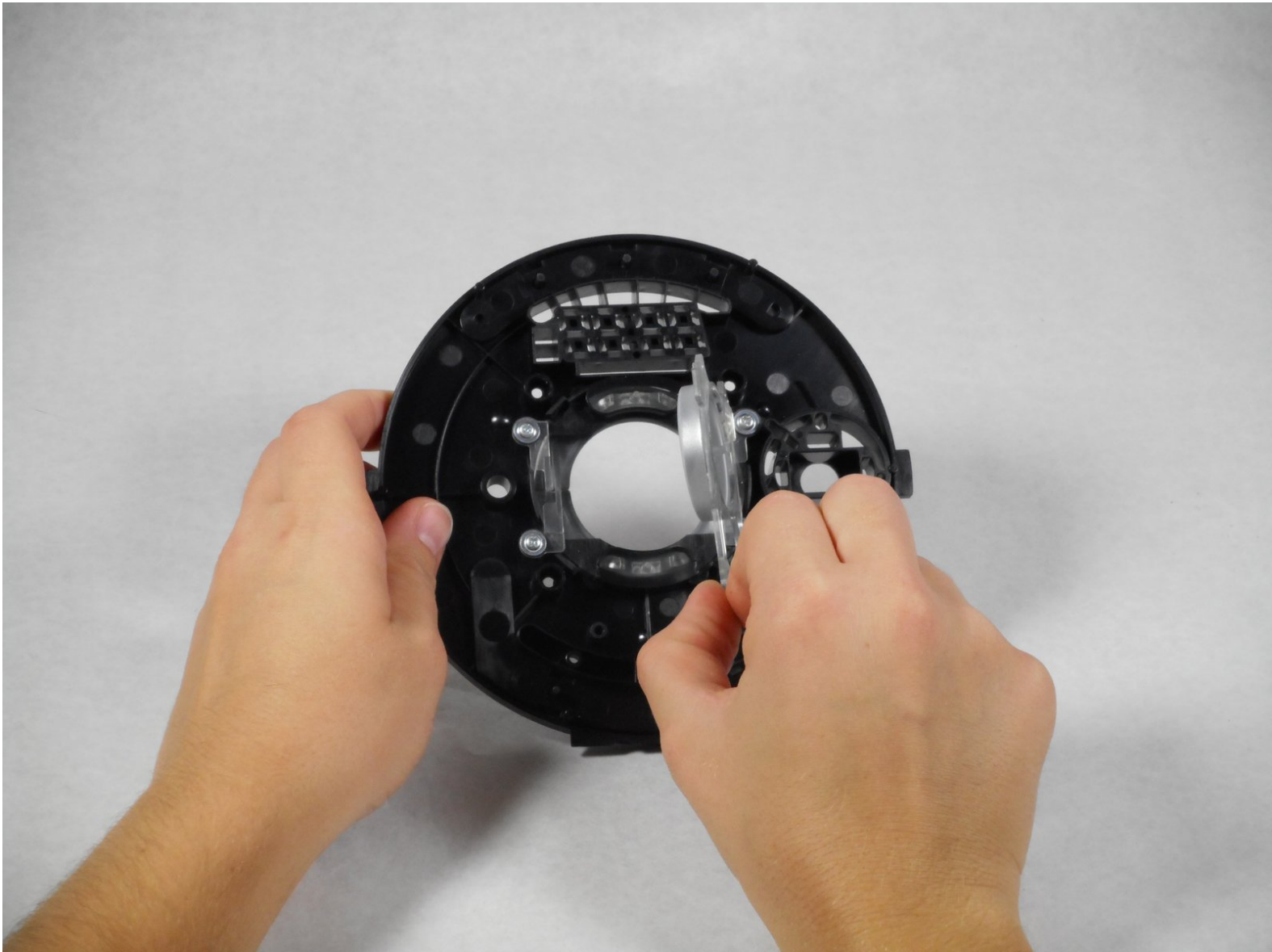




# iRobot Roomba 560 "Clean" Button Replacement

Use this guide to replace the plastic portion of the "Clean" button if it is stuck or broken.

Written By: Naomi Hennefeld



## INTRODUCTION

This guide can be used to remove and/or replace a broken or stuck "clean" button. This guide is more intensive and time consuming than other Roomba 560 guides. Be prepared to remove the top silver panel to access the control board that houses the button.

---

### TOOLS:

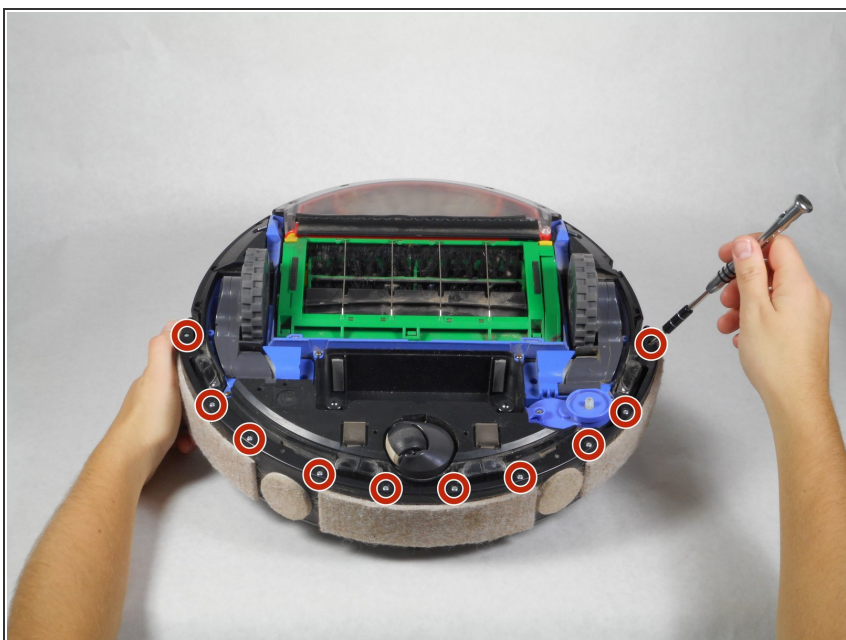
- [JIS #1](#) (1)
  - [iFixit Opening Tools](#) (1)
-

## Step 1 — Clear Sensor Lens



- Rotate the Roomba so the bumper is in front of you.

## Step 2



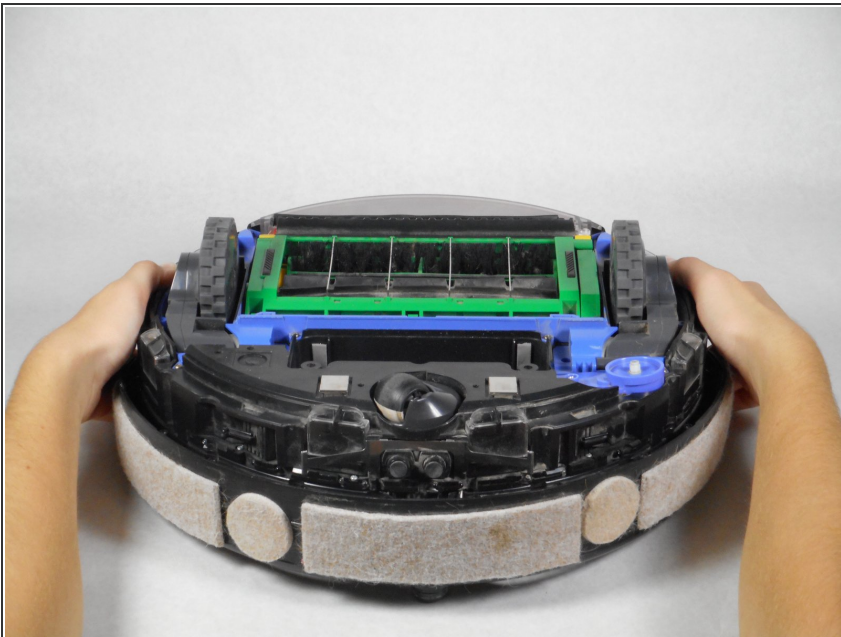
- Using the Phillips JIS #1 driver, remove the ten 10 mm screws on the bumper that run along the outer edge of the Roomba.

### Step 3



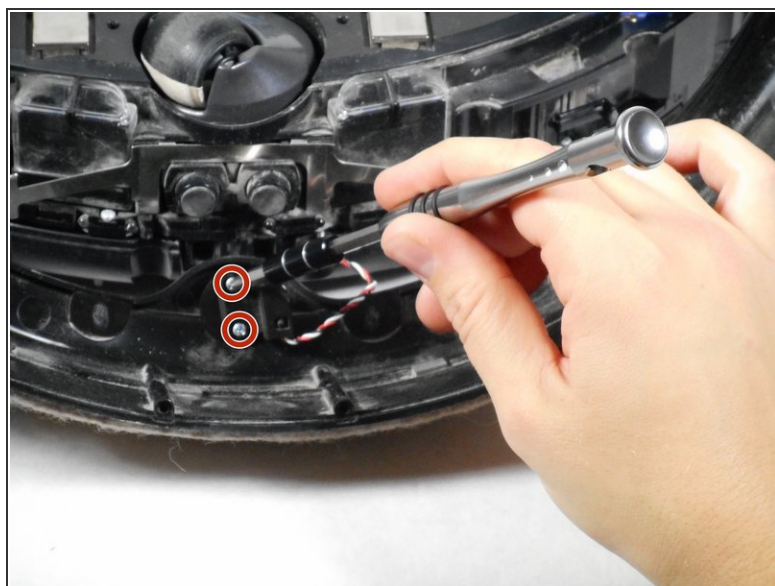
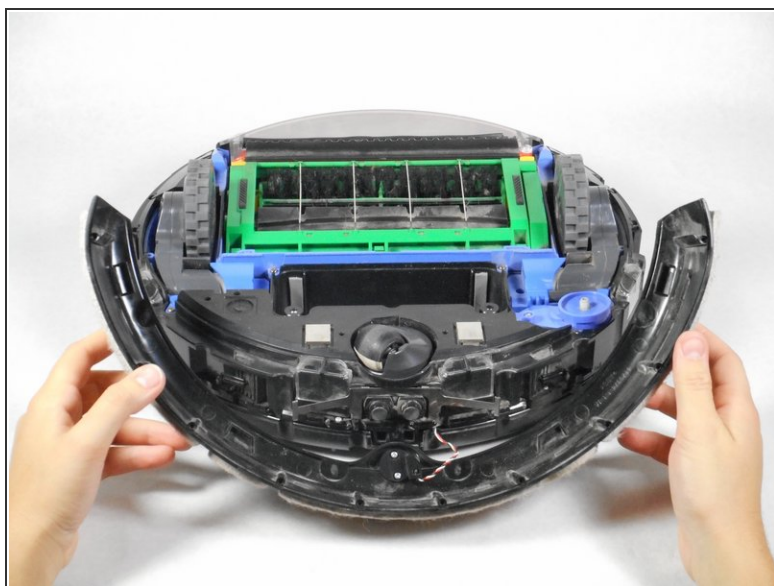
- Lift the thin top cover that holds the bumper in place.

### Step 4



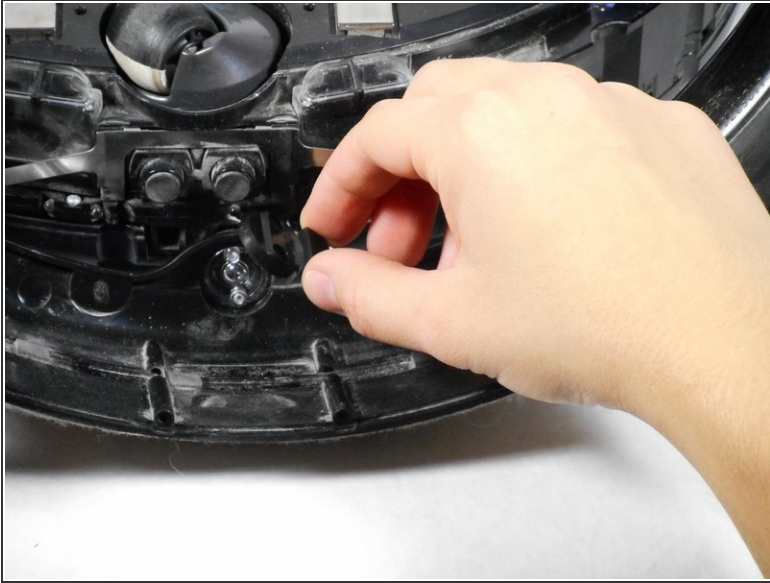
- Gently lift the device upwards from the bumper to detach these two pieces.
- ⚠ There are wires connecting the bumper to the device. Be careful while lifting the device off the bumper as to not damage these wires.

## Step 5



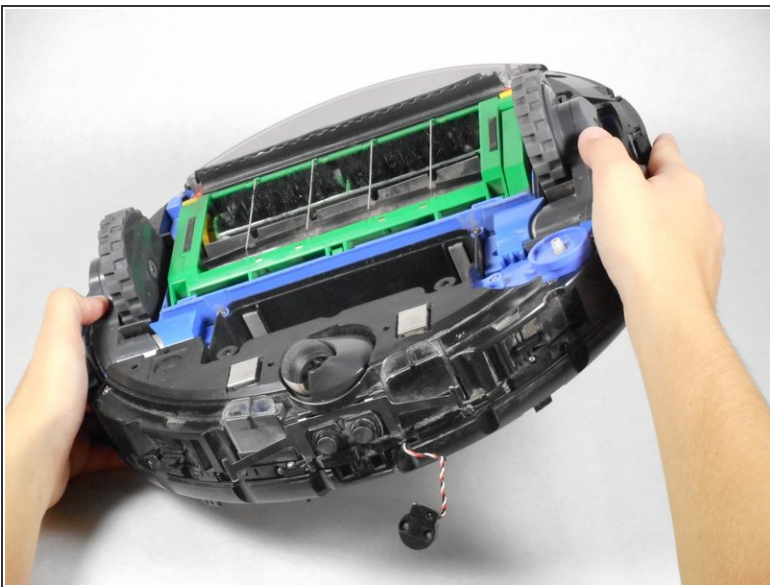
- Lift the bumper upwards for easier access.
- Unscrew the two 5 mm screws that connect the red and white wires to the device using the Phillips JIS #1 driver.
- ⓘ The sensor can be unplugged from the motherboard so the bumper isn't hanging off the Roomba.

## Step 6



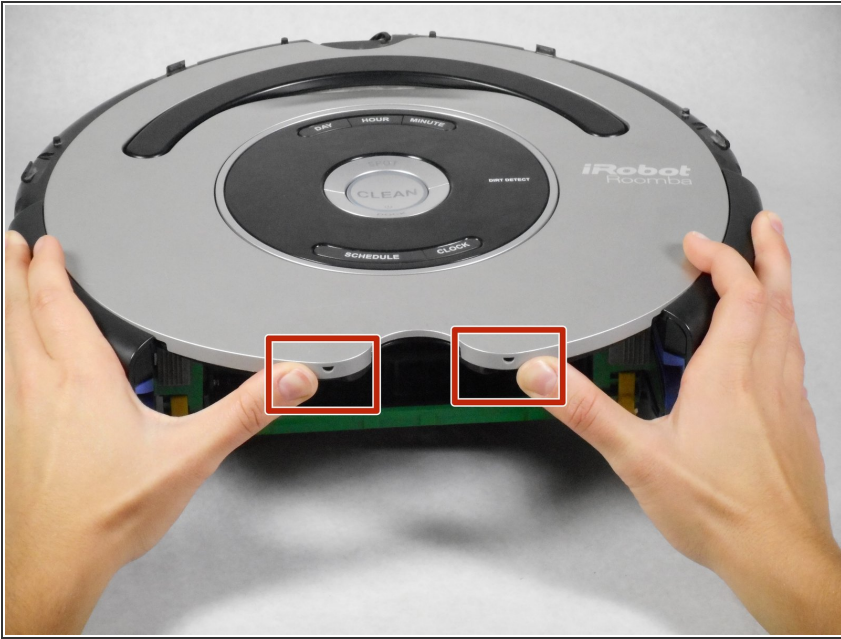
- Lift the circular black panel off the lens.
- Lift the clear lens that is on the other side of the bumper and replace it with a new lens.

## Step 7 — Top Panels



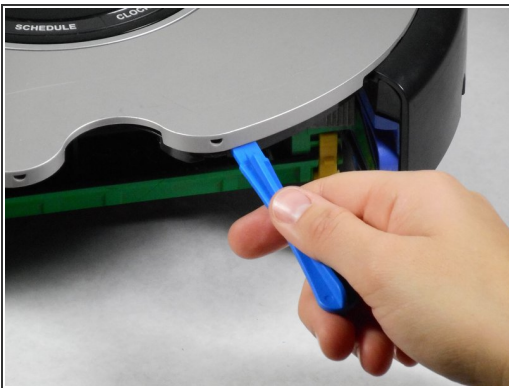
- Turn the device over so that it is face up with the vacuum bin in front of you .
- Press the button of the vacuum bin and pull out the bin from the device.

## Step 8



- Use your hands to unhook the snaps between the silver panel from the black panel located where the vacuum bin was.

## Step 9



- Using the plastic opening tool, go around the outer edges of the silver panel and unhook the snaps holding it in place.
- ⚠ When prying open the top panel from the inner casing, do so gently. Never "force" the top panel to snap off, or you could risk breaking pieces.

## Step 10



- Lift the black handle and use the plastic opening tool to unhook the snaps underneath it.
- Use the same tool to pry the silver cover from the black central control board.

## Step 11



- Lift the silver panel off of the black panel.

## Step 12



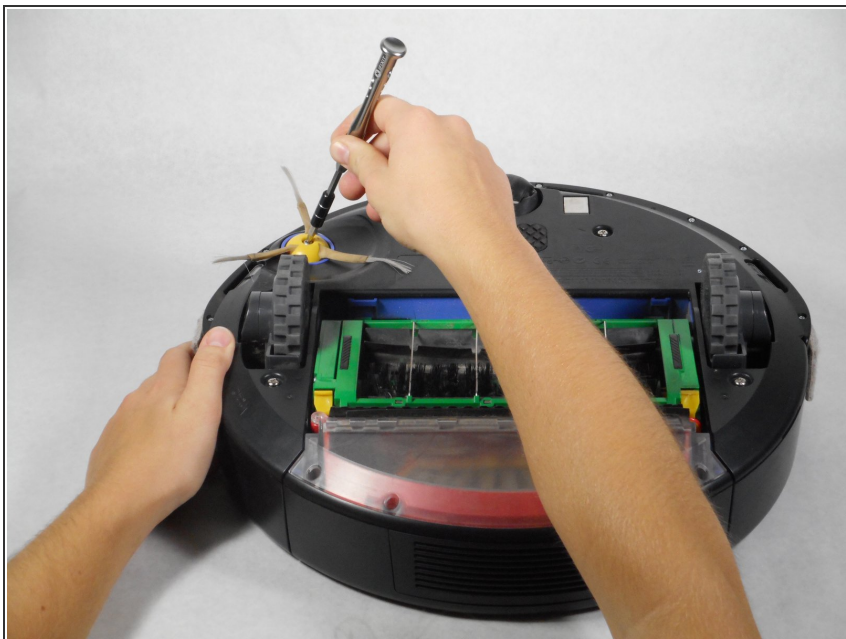
- Using the Phillips JIS #1 driver, unscrew the following 13 screws that hold the black panel in place:
  - Two 5 mm on the bottom ends of the semicircle handle
  - Ten 7.5 mm scattered on the Roomba
  - One 5 mm at the bottom of control board

## Step 13



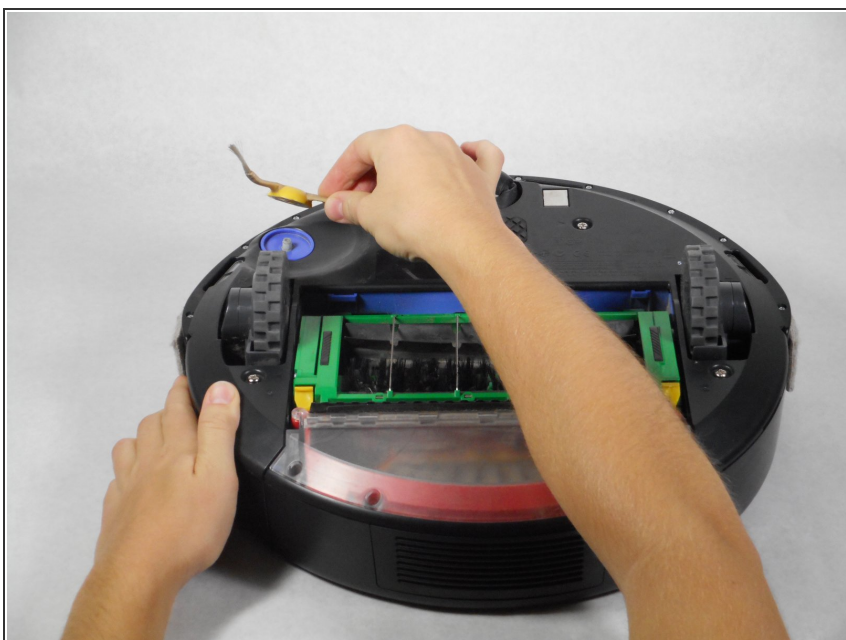
- Lift the black panel off the device.
  - ⓘ This will provide access to the motherboard and black circular control panel.

## Step 14 — Side Sweeper



- Flip the Roomba upside down.
- Unscrew the single 5 mm screw on the yellow side sweeper using the Phillips JIS #1 driver.

## Step 15



- Lift the yellow side sweeper, removing it from the device.

## Step 16 — Battery



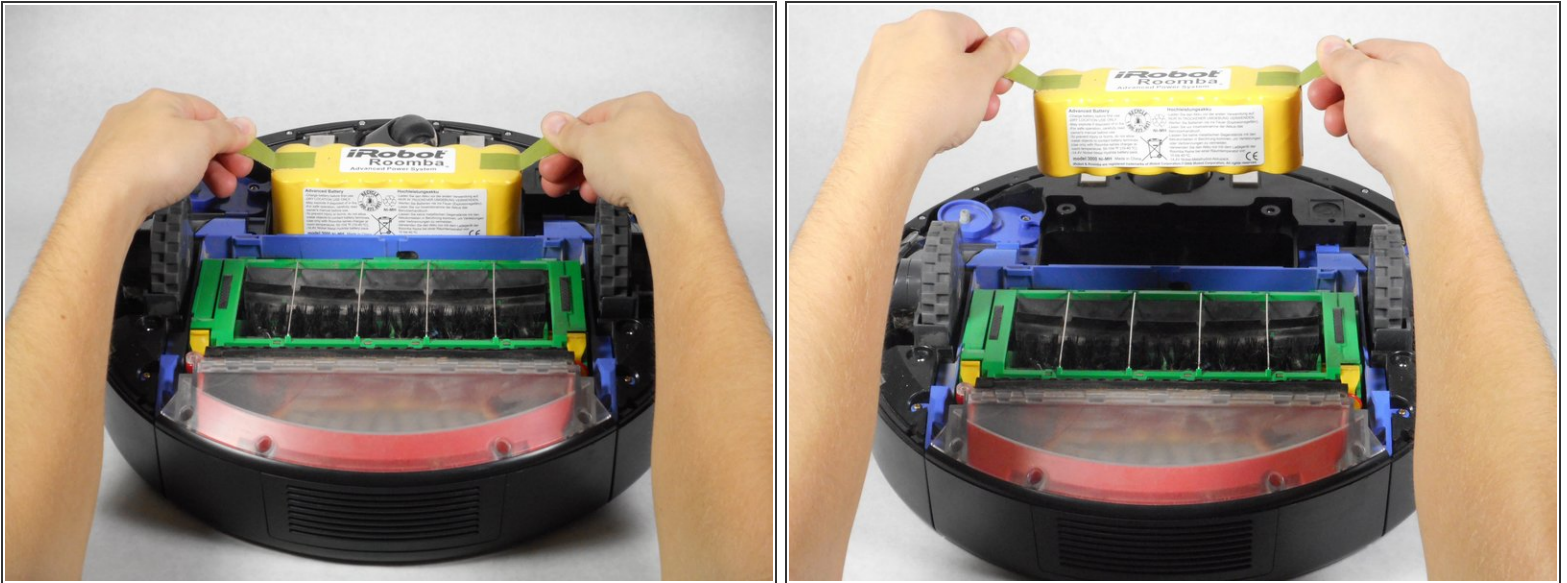
- Using the Phillips JIS #1 driver, remove the four 10 mm screws that hold the back panel in place.

## Step 17



- Lift up the back panel to remove it from the device.

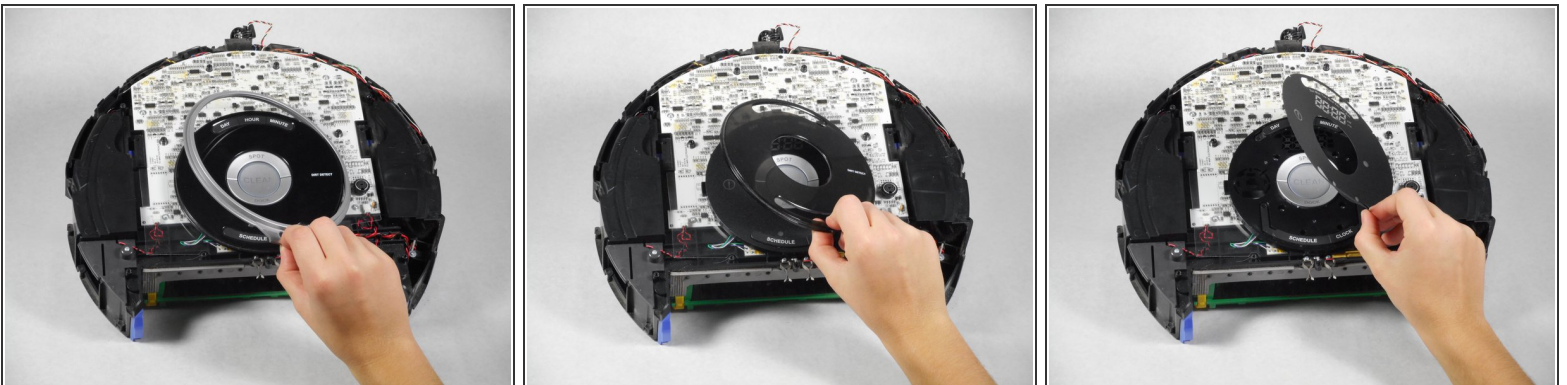
## Step 18



- Lift up the yellow battery by pulling up the green tabs on its side.

⚠ Handle the battery with care.

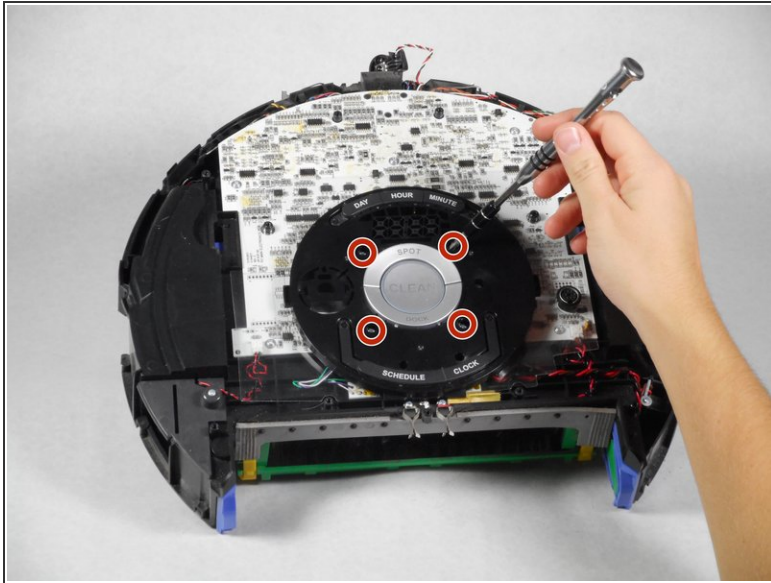
## Step 19 — "Clean" Button



- Remove the outer silver circle, black plastic cover, and black film from the central control board in that order.

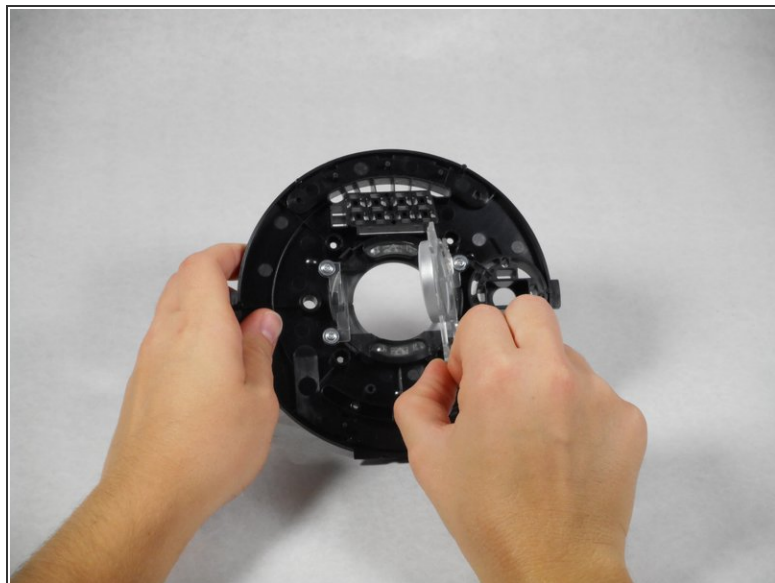
ⓘ All of these elements are easy to remove and do not require a specialized tool.

## Step 20



- Using the Phillips JIS #1 driver, unscrew the four 10 mm screws that surround the clean button.
- Remove the top of the control board.

## Step 21



- Flip the control board over.
- Using the Phillips JIS #1 driver, unscrew the two bottommost 5 mm screws.
- Lift off the button, and repair/replace the damaged plastic portion of the "clean" button.

To reassemble your device, follow these instructions in reverse order.