



iRobot Roomba 560 Handle Replacement

This guide will demonstrate how to remove and replace the black handle on the top of the Roomba 560.

Written By: Davis Negrete



INTRODUCTION

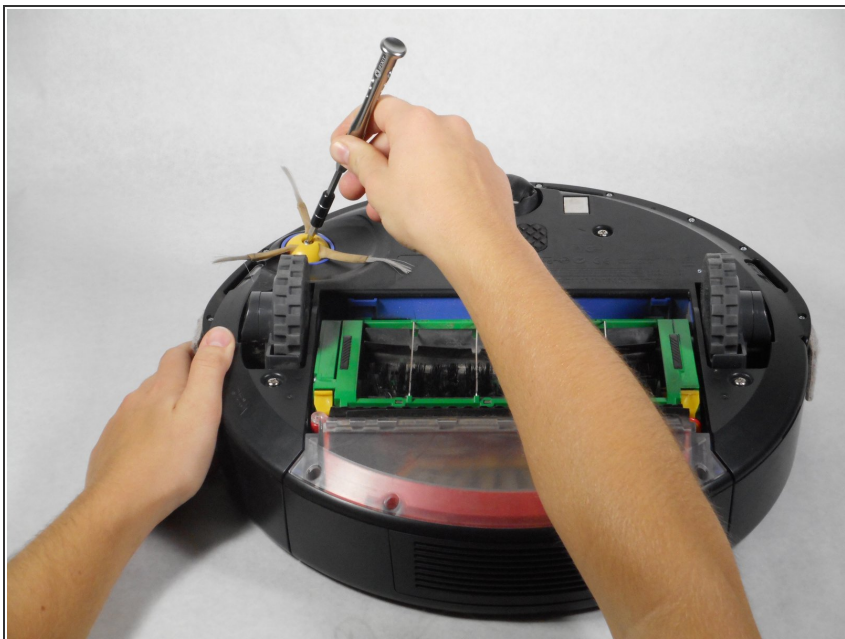
The handle helps you carry the device, so replacing it is necessary when it is damaged. This replacement is challenging due to the intensive work that must be done to access the panel that holds the handle in place. Once you reach the panel, all that remains is to simply pop the handle out of its hinges.



TOOLS:

- [JIS #1](#) (1)
 - [iFixit Opening Tools](#) (1)
-

Step 1 — Side Sweeper



- Flip the Roomba upside down.
- Unscrew the single 5 mm screw on the yellow side sweeper using the Phillips JIS #1 driver.

Step 2



- Lift the yellow side sweeper, removing it from the device.

Step 3 — Battery



- Using the Phillips JIS #1 driver, remove the four 10 mm screws that hold the back panel in place.

Step 4



- Lift up the back panel to remove it from the device.

Step 5



- Lift up the yellow battery by pulling up the green tabs on its side.

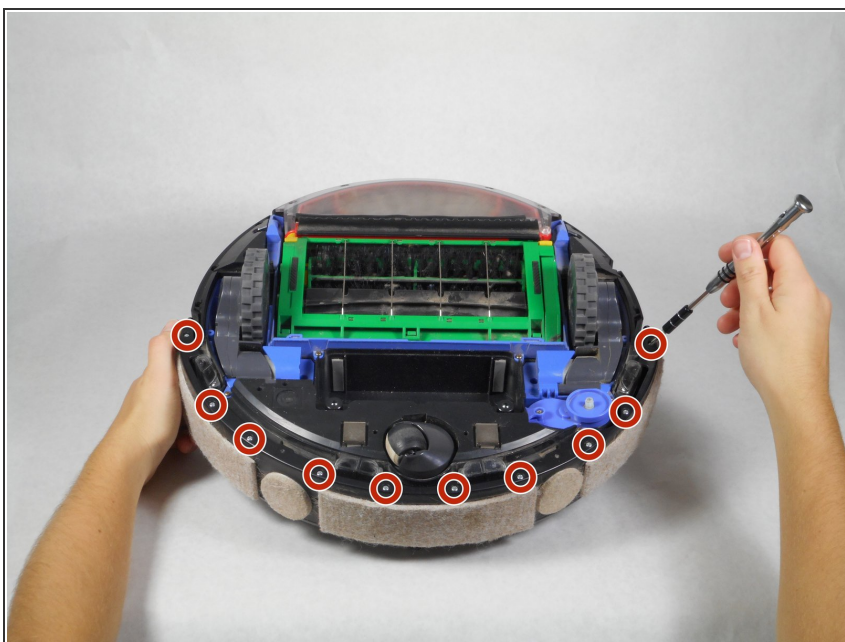
⚠ Handle the battery with care.

Step 6 — Clear Sensor Lens



- Rotate the Roomba so the bumper is in front of you.

Step 7



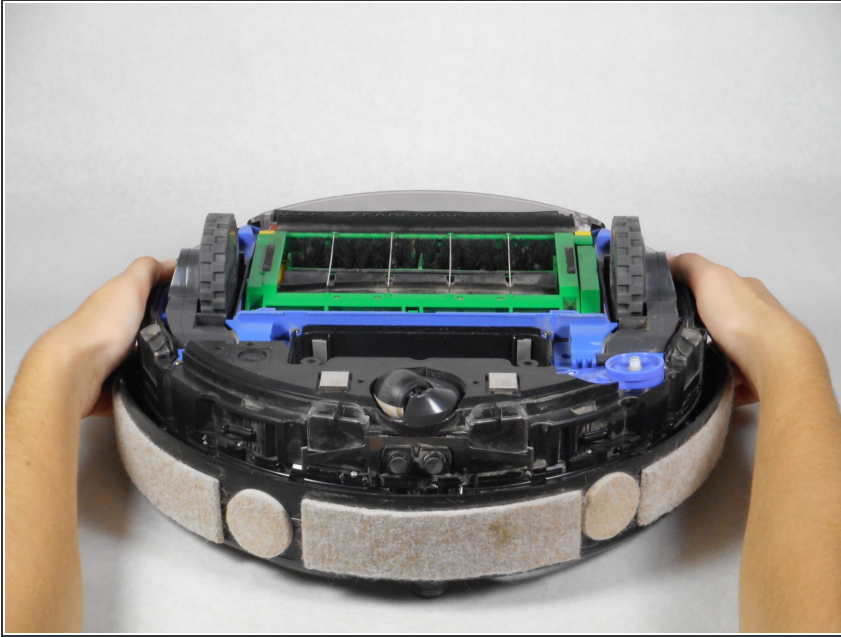
- Using the Phillips JIS #1 driver, remove the ten 10 mm screws on the bumper that run along the outer edge of the Roomba.

Step 8



- Lift the thin top cover that holds the bumper in place.

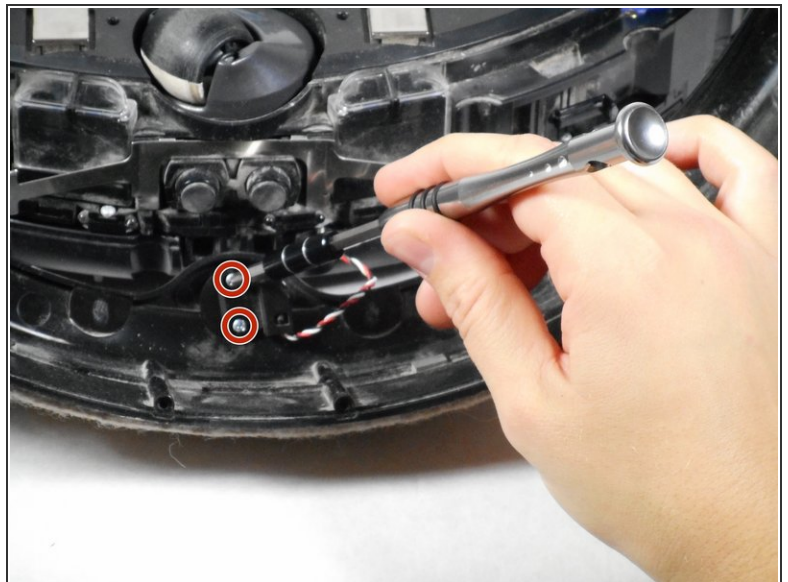
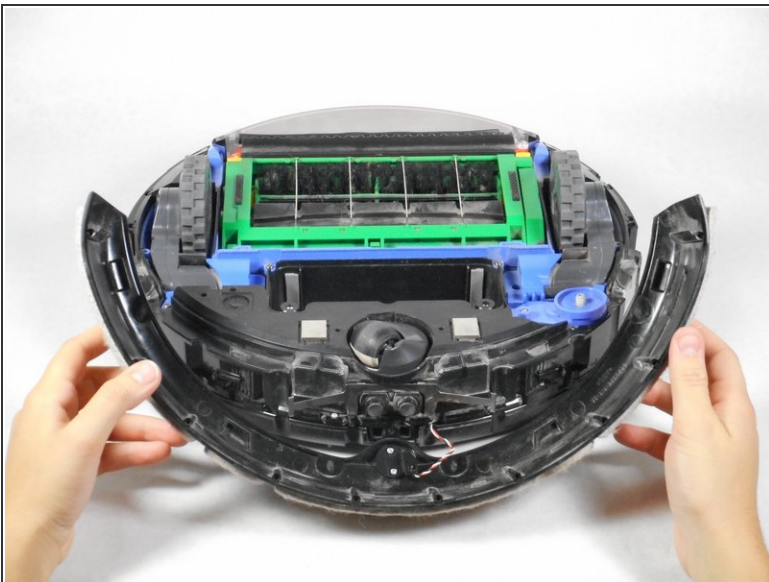
Step 9



- Gently lift the device upwards from the bumper to detach these two pieces.

⚠ There are wires connecting the bumper to the device. Be careful while lifting the device off the bumper as to not damage these wires.

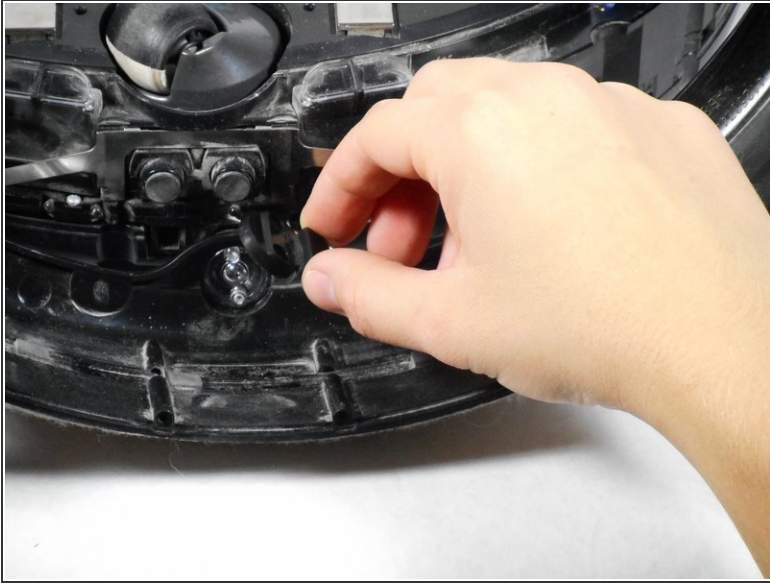
Step 10



- Lift the bumper upwards for easier access.
 - Unscrew the two 5 mm screws that connect the red and white wires to the device using the Phillips JIS #1 driver.
- ⓘ The sensor can be unplugged from the motherboard so the bumper isn't hanging off the Roomba.

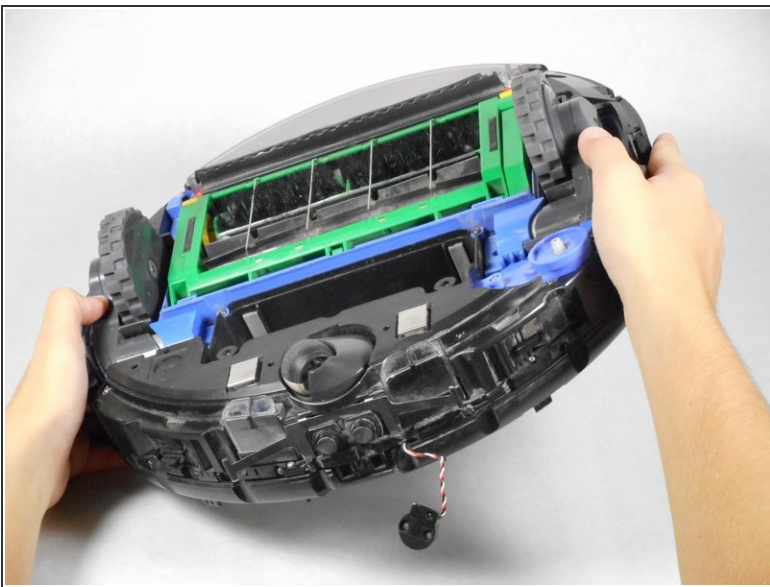
This document was generated on 2019-10-01 03:13:41 PM (MST).

Step 11



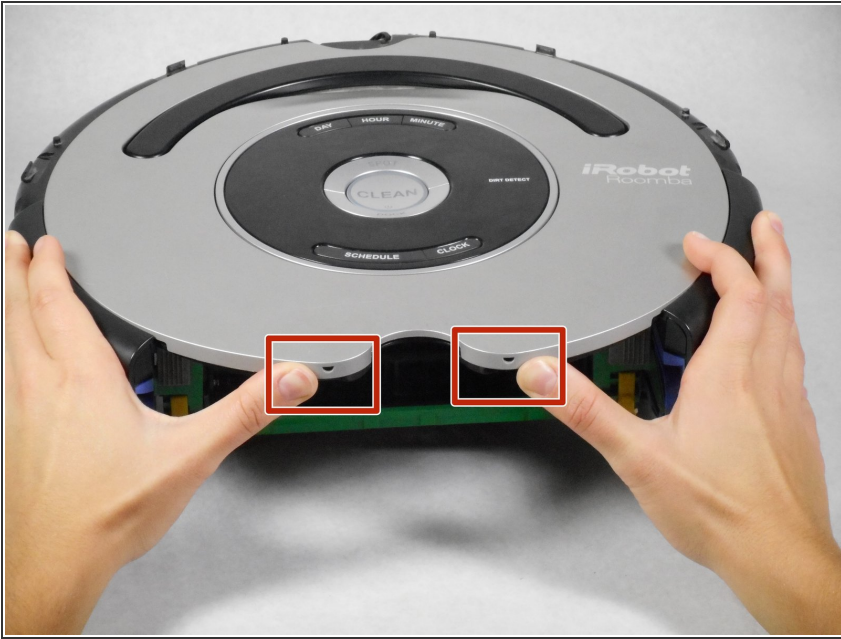
- Lift the circular black panel off the lens.
- Lift the clear lens that is on the other side of the bumper and replace it with a new lens.

Step 12 — Top Panels



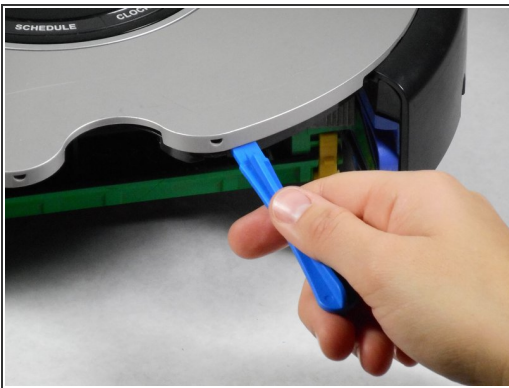
- Turn the device over so that it is face up with the vacuum bin in front of you .
- Press the button of the vacuum bin and pull out the bin from the device.

Step 13



- Use your hands to unhook the snaps between the silver panel from the black panel located where the vacuum bin was.

Step 14



- Using the plastic opening tool, go around the outer edges of the silver panel and unhook the snaps holding it in place.
- ⚠ When prying open the top panel from the inner casing, do so gently. Never "force" the top panel to snap off, or you could risk breaking pieces.

Step 15



- Lift the black handle and use the plastic opening tool to unhook the snaps underneath it.
- Use the same tool to pry the silver cover from the black central control board.

Step 16



- Lift the silver panel off of the black panel.

Step 17



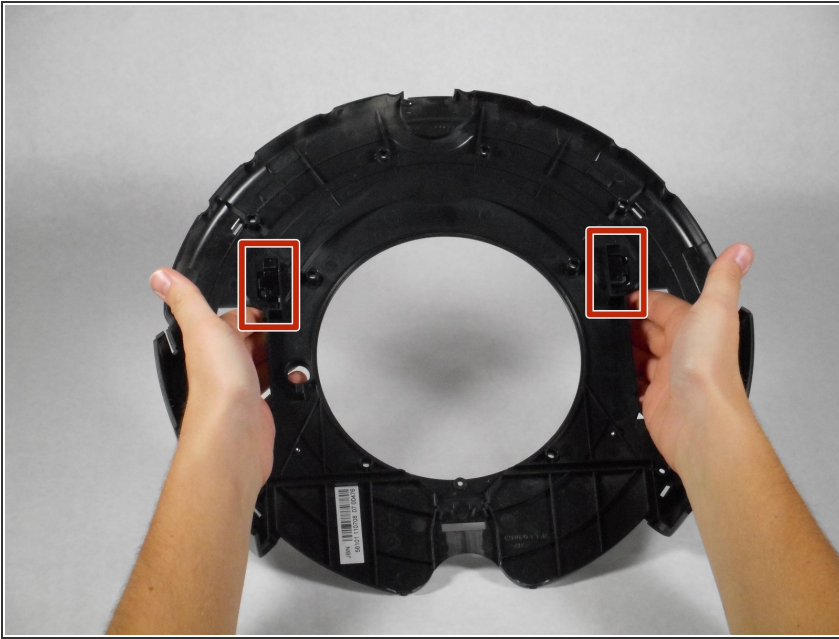
- Using the Phillips JIS #1 driver, unscrew the following 13 screws that hold the black panel in place:
 - Two 5 mm on the bottom ends of the semicircle handle
 - Ten 7.5 mm scattered on the Roomba
 - One 5 mm at the bottom of control board

Step 18



- Lift the black panel off the device.
 - ⓘ This will provide access to the motherboard and black circular control panel.

Step 19 — Handle



- Hold the black panel in front of you with the handle facing the other side.
- Locate the two hinges that will be pressed in the next step.

Step 20



- Rotate the black panel so that the handle is now facing you.
- Insert your hands through the rectangular holes.
- Using your index fingers, press the hinges that were located in the previous step.

Step 21



- Lift the black handle for replacement.

To reassemble your device, follow these instructions in reverse order.