



iRobot Roomba 560 Top Panels Replacement

A guide to remove the silver and black panels of the Roomba 560.

Written By: Mairead Blaes



INTRODUCTION

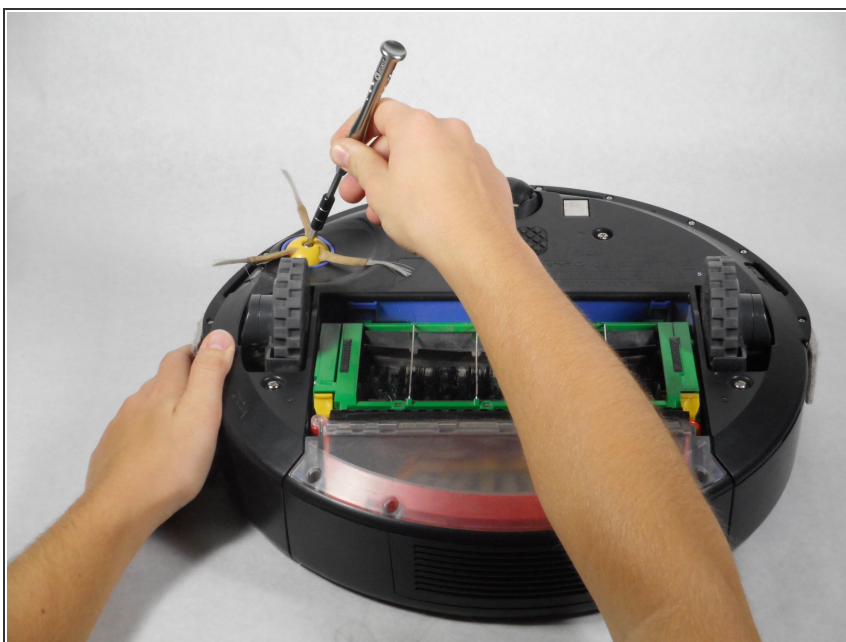
Use this "Prerequisite Only" guide for removing the top silver and black panels for other replacements in the Roomba 560.



TOOLS:

- [JIS #1](#) (1)
 - [iFixit Opening Tools](#) (1)
-

Step 1 — Side Sweeper



- Flip the Roomba upside down.
- Unscrew the single 5 mm screw on the yellow side sweeper using the Phillips JIS #1 driver.

Step 2



- Lift the yellow side sweeper, removing it from the device.

Step 3 — Battery



- Using the Phillips JIS #1 driver, remove the four 10 mm screws that hold the back panel in place.

Step 4



- Lift up the back panel to remove it from the device.

Step 5



- Lift up the yellow battery by pulling up the green tabs on its side.

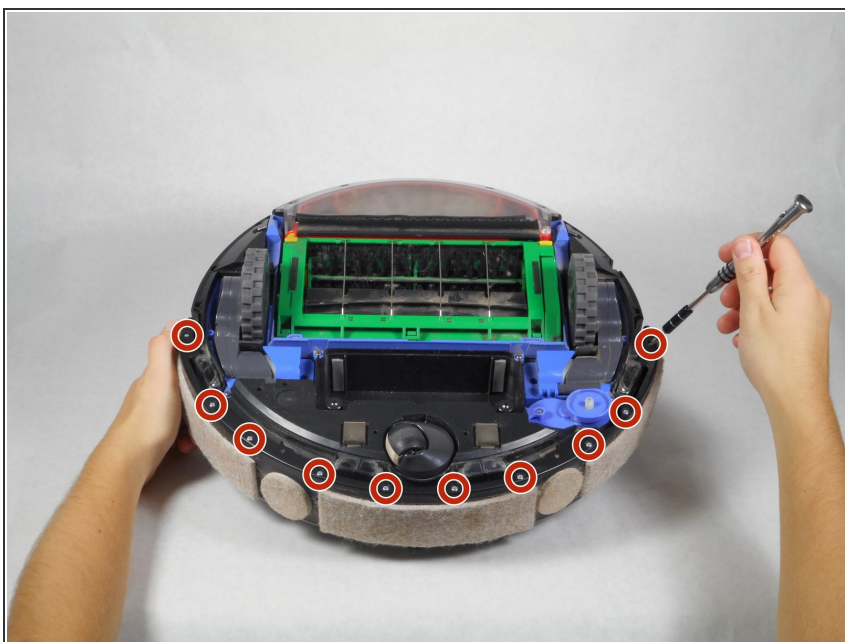
⚠ Handle the battery with care.

Step 6 — Clear Sensor Lens



- Rotate the Roomba so the bumper is in front of you.

Step 7



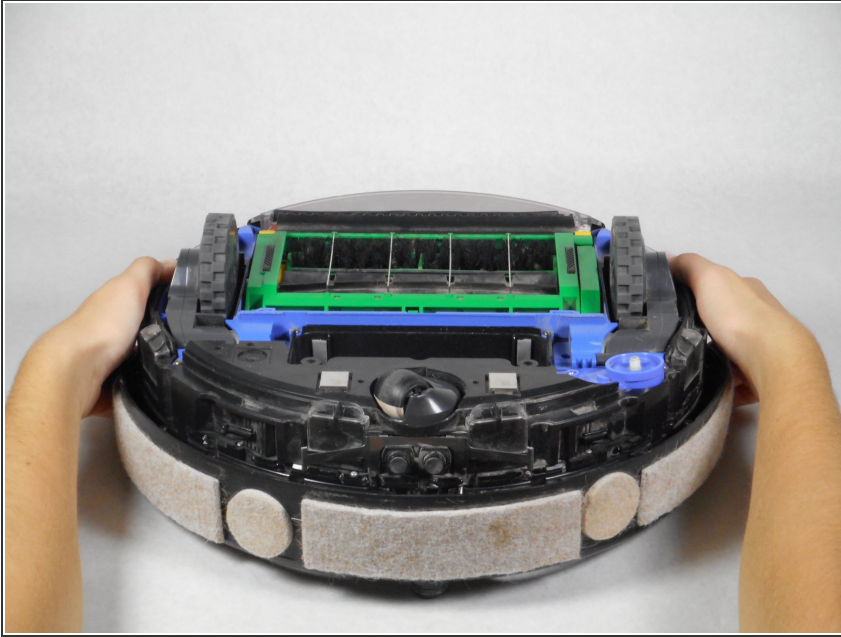
- Using the Phillips JIS #1 driver, remove the ten 10 mm screws on the bumper that run along the outer edge of the Roomba.

Step 8



- Lift the thin top cover that holds the bumper in place.

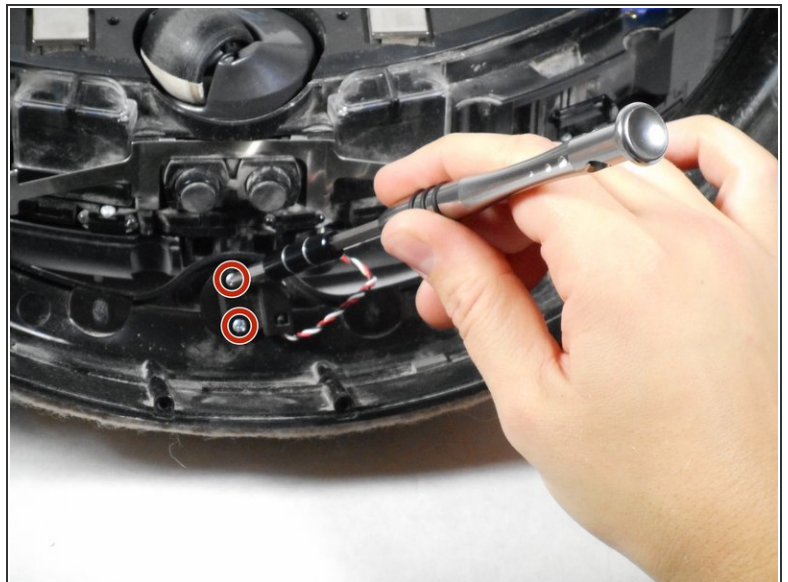
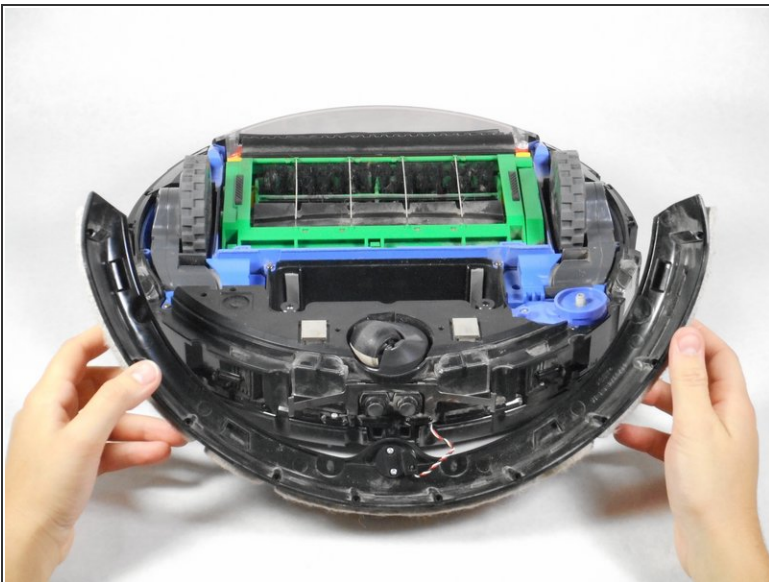
Step 9



- Gently lift the device upwards from the bumper to detach these two pieces.

⚠ There are wires connecting the bumper to the device. Be careful while lifting the device off the bumper as to not damage these wires.

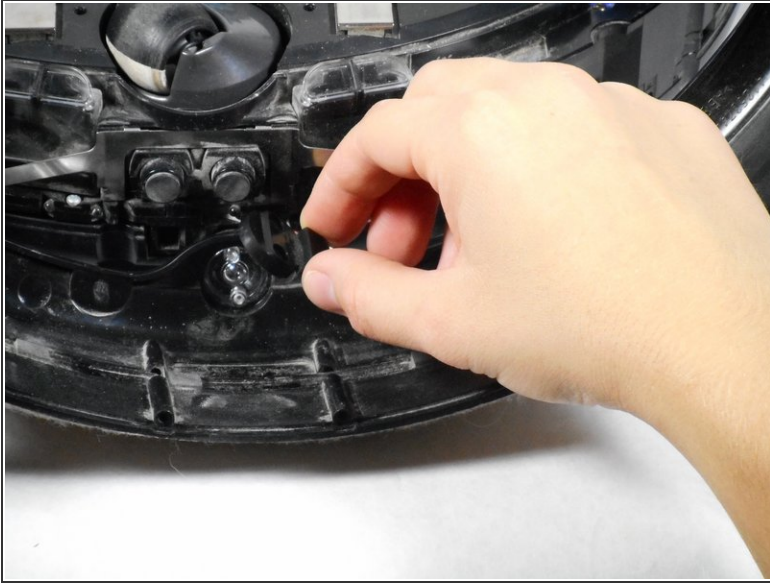
Step 10



- Lift the bumper upwards for easier access.
 - Unscrew the two 5 mm screws that connect the red and white wires to the device using the Phillips JIS #1 driver.
- ⓘ The sensor can be unplugged from the motherboard so the bumper isn't hanging off the Roomba.

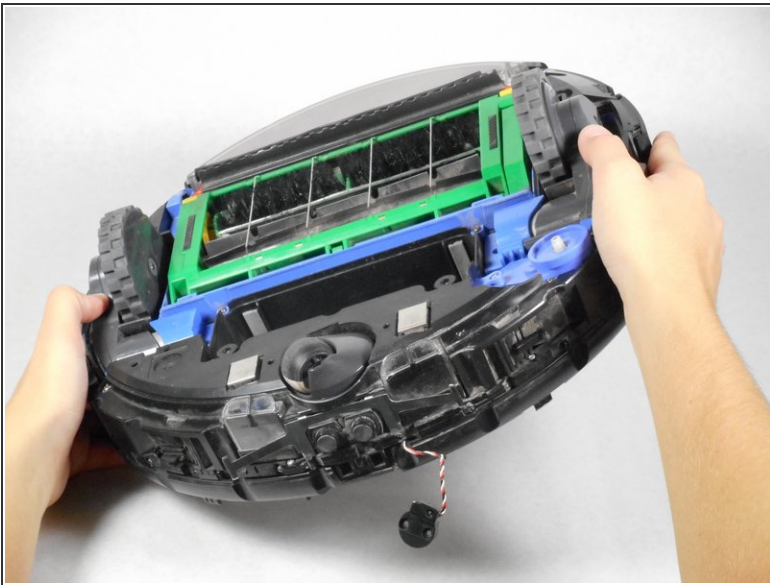
This document was generated on 2019-10-01 03:11:28 PM (MST).

Step 11



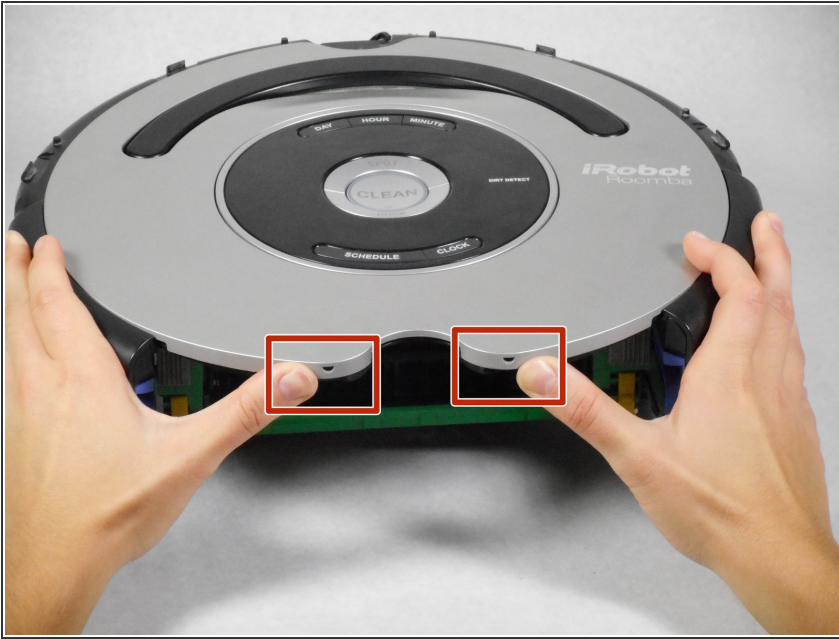
- Lift the circular black panel off the lens.
- Lift the clear lens that is on the other side of the bumper and replace it with a new lens.

Step 12 — Top Panels



- Turn the device over so that it is face up with the vacuum bin in front of you .
- Press the button of the vacuum bin and pull out the bin from the device.

Step 13



- Use your hands to unhook the snaps between the silver panel from the black panel located where the vacuum bin was.

Step 14



- Using the plastic opening tool, go around the outer edges of the silver panel and unhook the snaps holding it in place.
- ⚠ When prying open the top panel from the inner casing, do so gently. Never "force" the top panel to snap off, or you could risk breaking pieces.

Step 15



- Lift the black handle and use the plastic opening tool to unhook the snaps underneath it.
- Use the same tool to pry the silver cover from the black central control board.

Step 16



- Lift the silver panel off of the black panel.

Step 17



- Using the Phillips JIS #1 driver, unscrew the following 13 screws that hold the black panel in place:
 - Two 5 mm on the bottom ends of the semicircle handle
 - Ten 7.5 mm scattered on the Roomba
 - One 5 mm at the bottom of control board

Step 18



- Lift the black panel off the device.
 - ⓘ This will provide access to the motherboard and black circular control panel.

To reassemble your device, follow these instructions in reverse order.