



iRobot Roomba 630 Side Brush Motor Cleaning and Replacement

Remove the Side Brush motor for cleaning or replacement.

Written By: Jabari Baptiste



INTRODUCTION

This guide tells you how to replace your Roomba's side brush motor.



TOOLS:

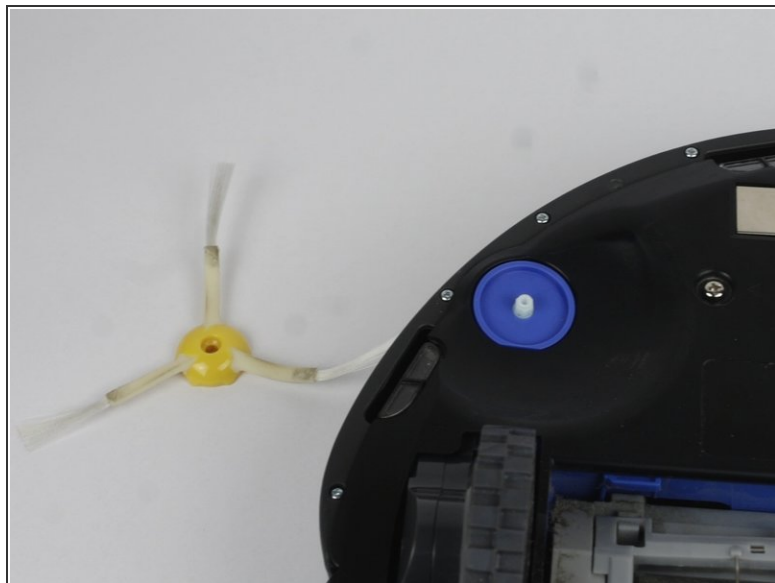
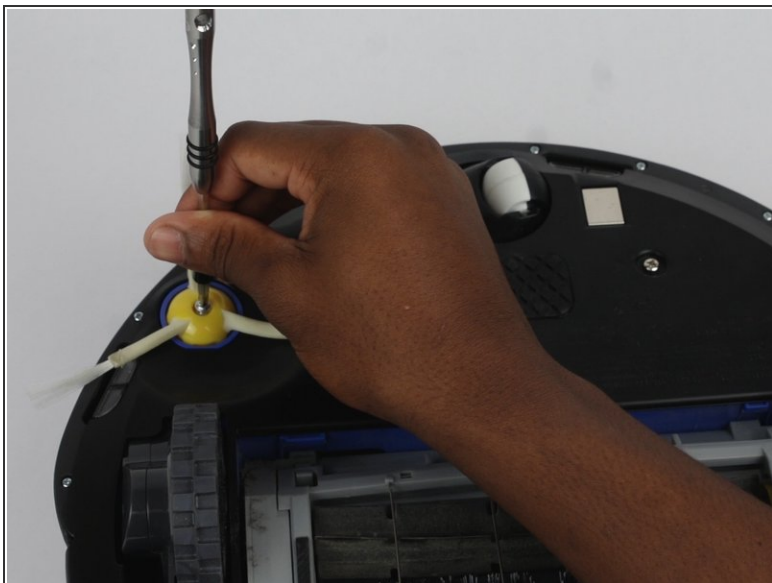
- [Tri-point Y0 Screwdriver](#) (1)
- [Phillips #0 Screwdriver](#) (1)
- [Phillips #2 Screwdriver](#) (1)



PARTS:

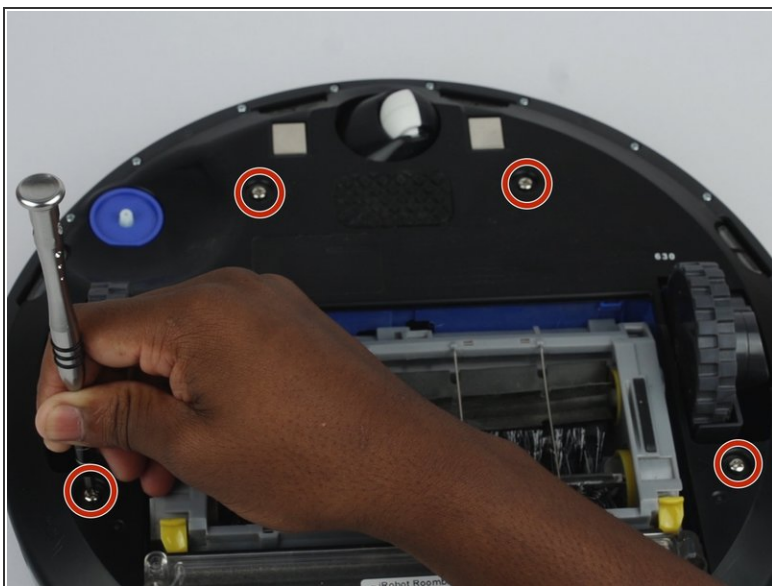
- [Roomba 600 series Motor](#) (1)

Step 1 — Side Brush Motor



- Unscrew the 5.99 mm screw using the Phillips #2 screwdriver.

Step 2



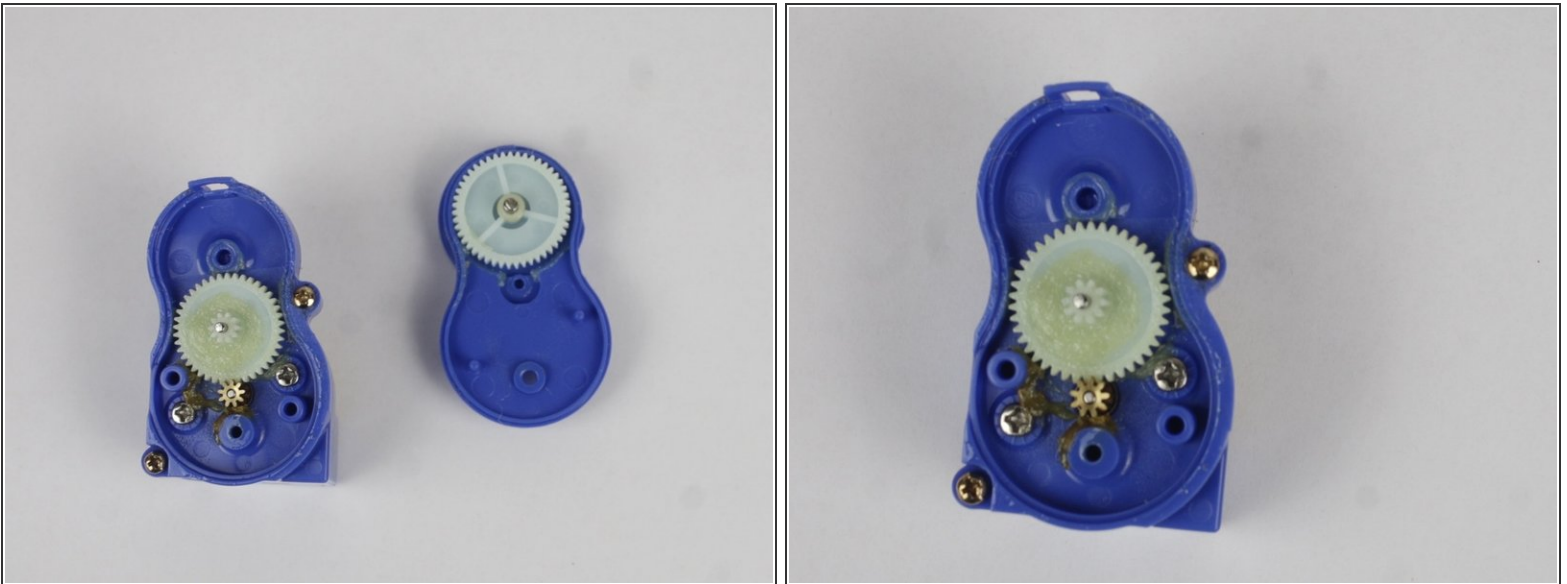
- Unscrew the (4) 10.1 mm screws to the back cover using the Phillips #2 screwdriver.
- Lift the back cover off to access the gear box.

Step 3



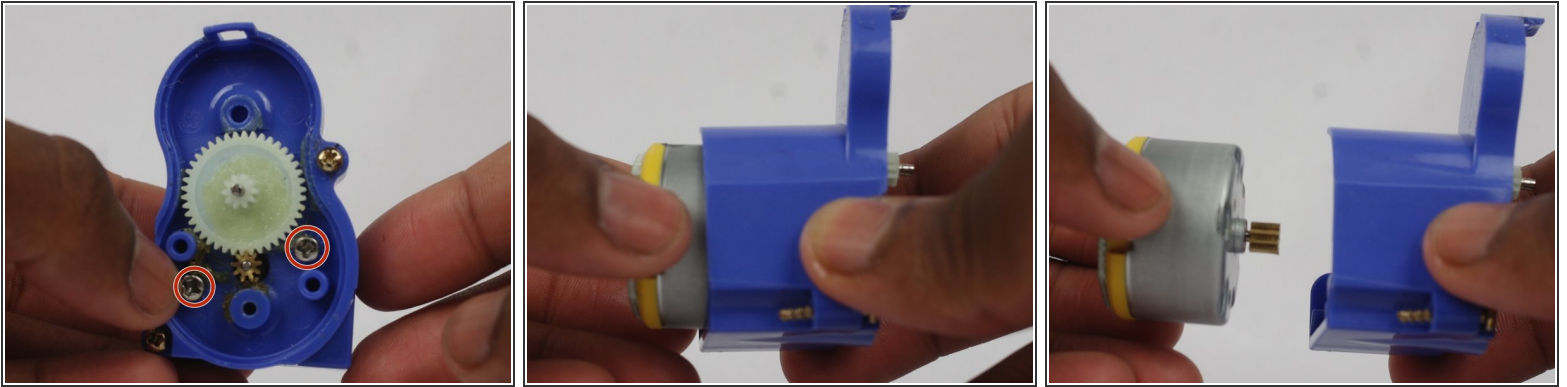
- Unscrew the (4) four 14.97 mm screws to the side brush gear box.
- Lift the gear box out.

Step 4



- Pry the top of the gear box off.
- Check for debris in the gear box and clean it out.

Step 5



- If you are replacing the motor, unscrew the 2 screws holding the motor in place.
- Pull the old motor out.

To reassemble your device, follow these instructions in reverse order.