



iRobot Roomba 630 Top Bumper Infrared Sensor Replacement

This will show you how to remove and replace the Top Bumper Infrared Sensor of your iRobot Roomba 630.

Written By: Jeffrey Rook



INTRODUCTION

Use this guide to replace the infrared sensor on the top bumper of your device.



TOOLS:

- [Phillips #2 Screwdriver](#) (1)



PARTS:

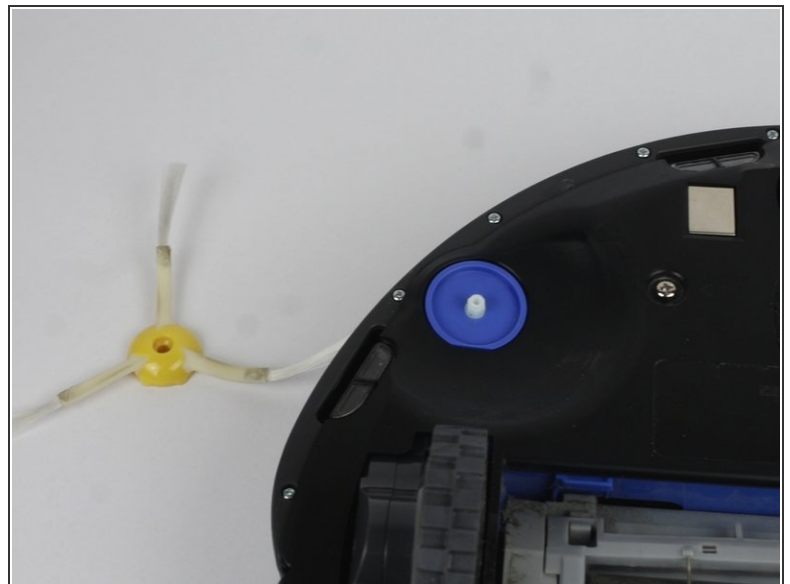
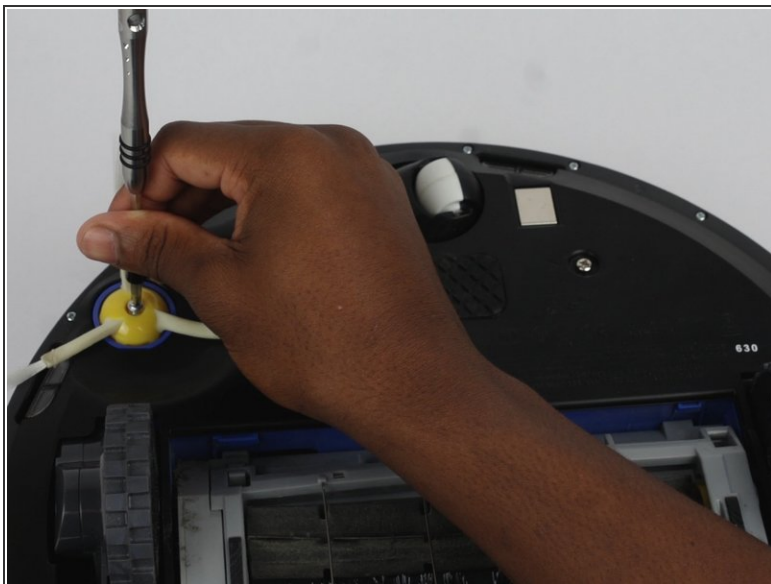
- [iRobot 600 series top bumper IR sensor](#) (1)

Step 1 — Front Sensor



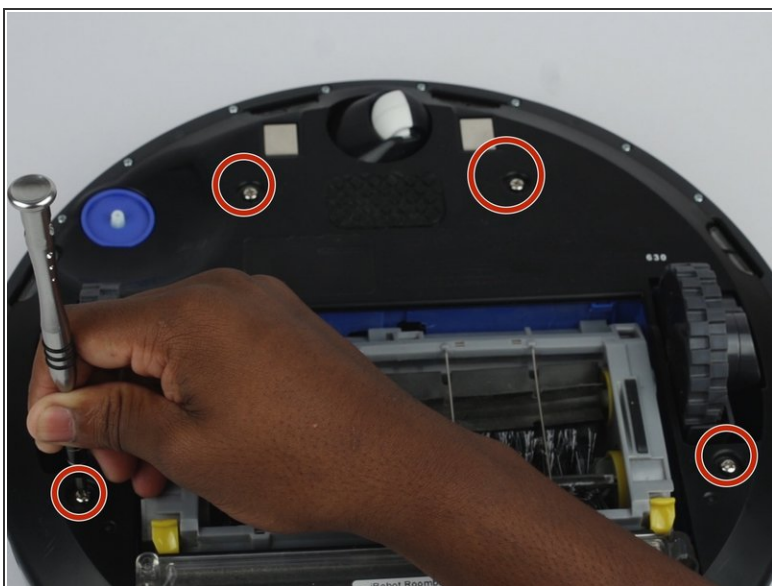
- Press the bin button and pull the bin out.

Step 2



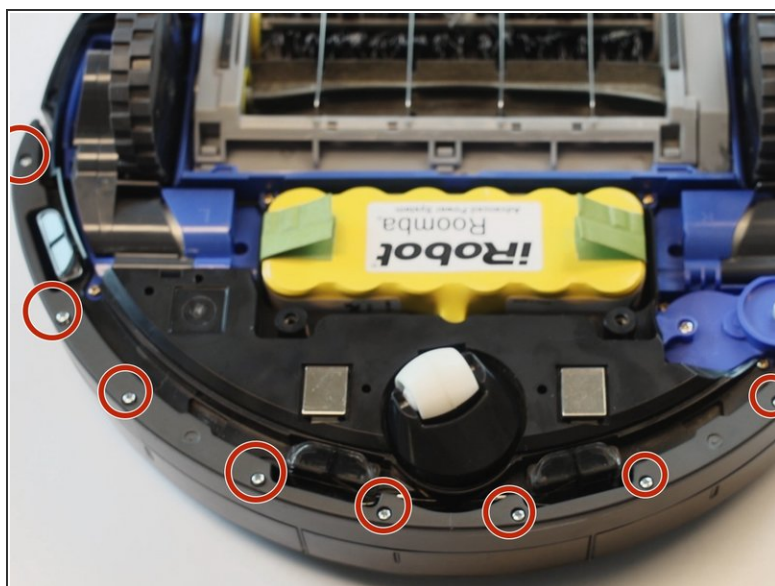
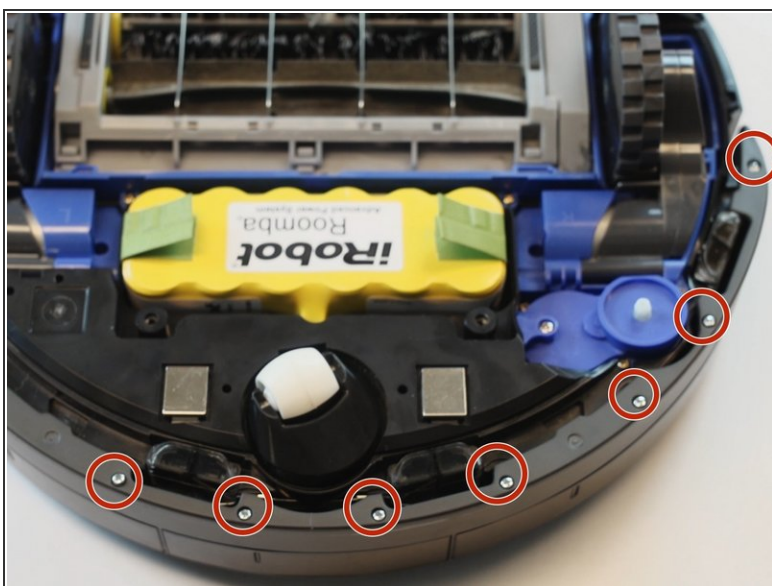
- Flip the device over and unscrew the side brush screw using the Phillips #2 screwdriver.

Step 3



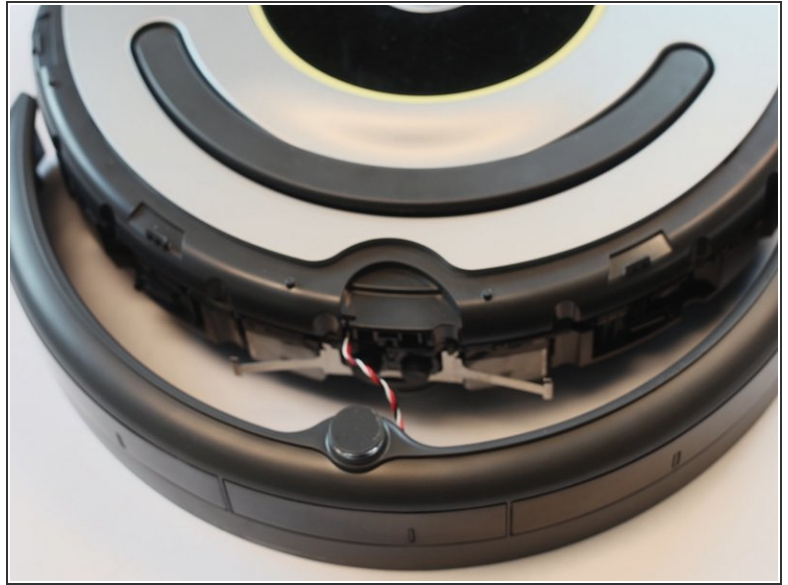
- Unscrew the (4) four back plate screws using the Phillips #2 screwdriver.
- Lift the back plate off of the device.

Step 4



- Unscrew the screws on the bottom of the front bumper.

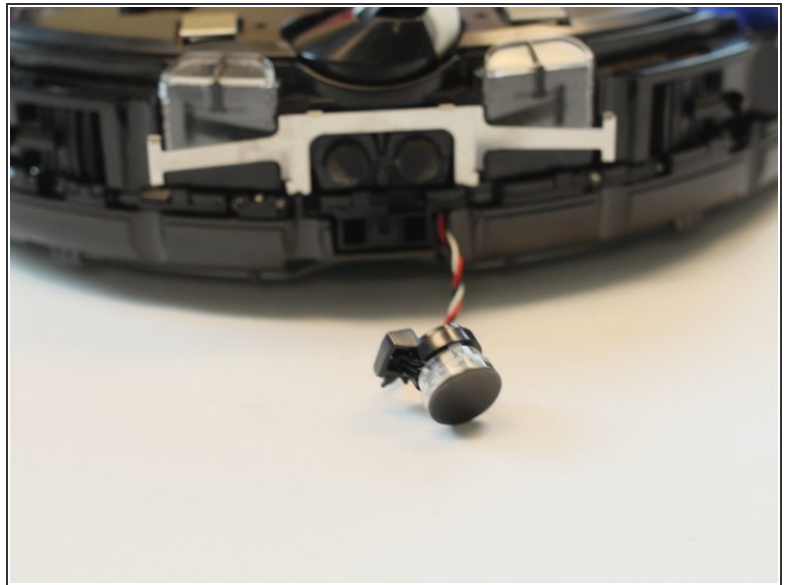
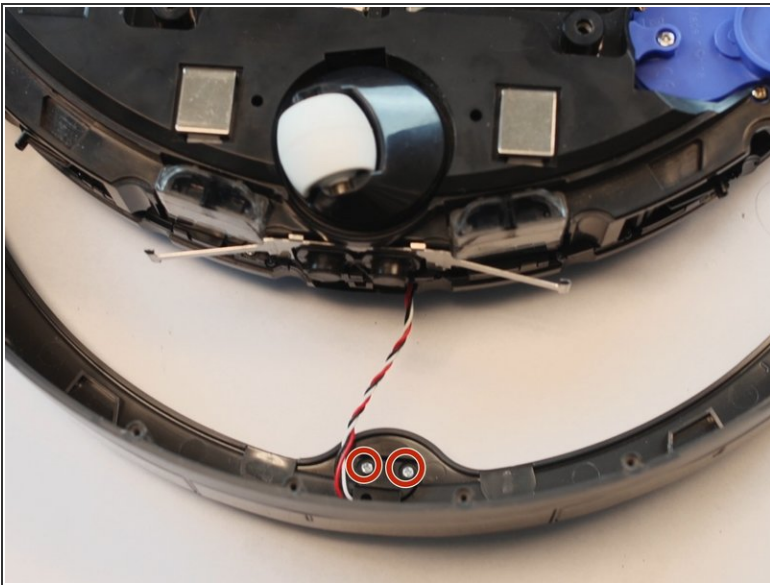
Step 5



- Flip the device over and lift the front bumper up and off.

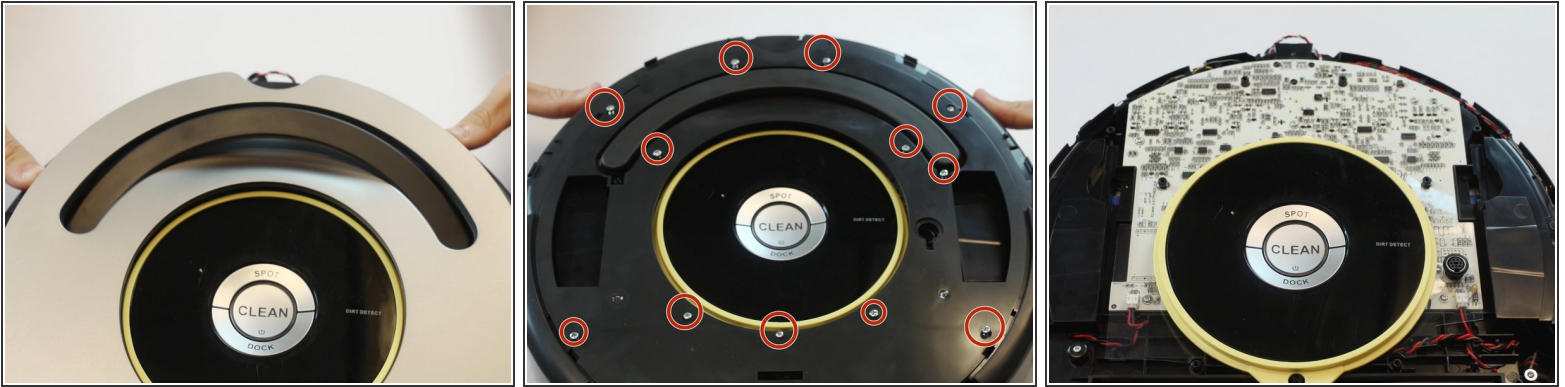
i Lift with care so the sensor wires aren't damaged.

Step 6



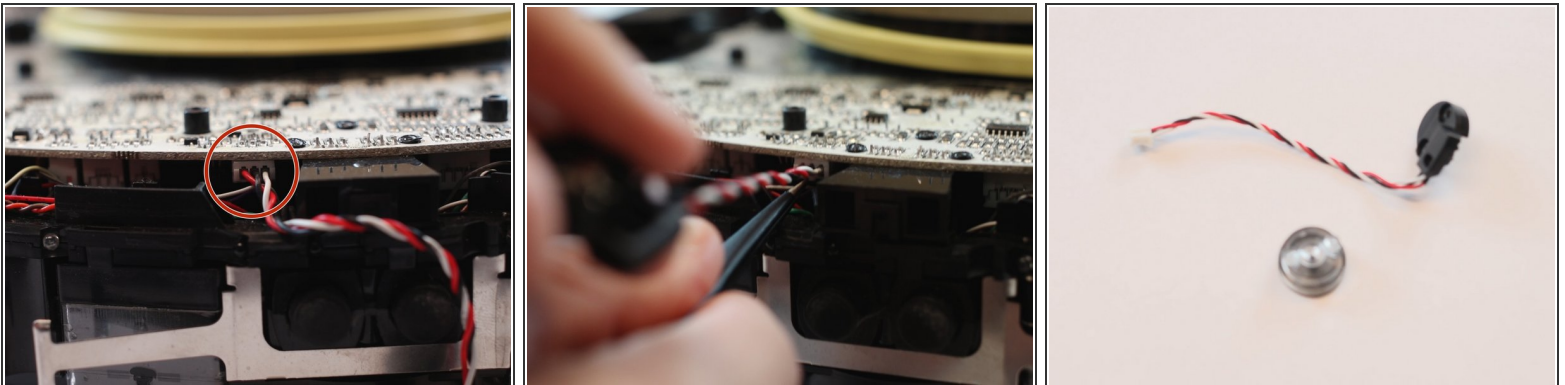
- Flip the Roomba back over and unscrew the 2 screws that connect the sensor to the bumper.

Step 7



- Flip Roomba back over and pry the top cover off.
- Unscrew the screws to the top plate and lift off.

Step 8



- Use tweezers or another tool to push up on the insert while gently pulling the sensor out by its wires.
- Remove the sensor.

To reassemble your device, follow these instructions in reverse order.