



iRobot Roomba 639 Front Caster Wheel Replacement

How to remove the front caster wheel on iRobot Roomba 630.

Written By: Angelica L Reyes



INTRODUCTION

For this guide, you should be aware that the screws securing the castor wheel holder are very small.



TOOLS:

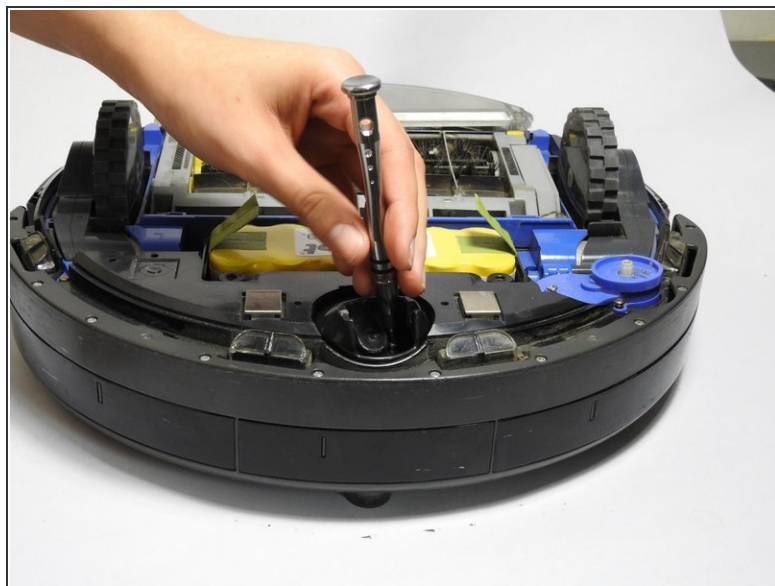
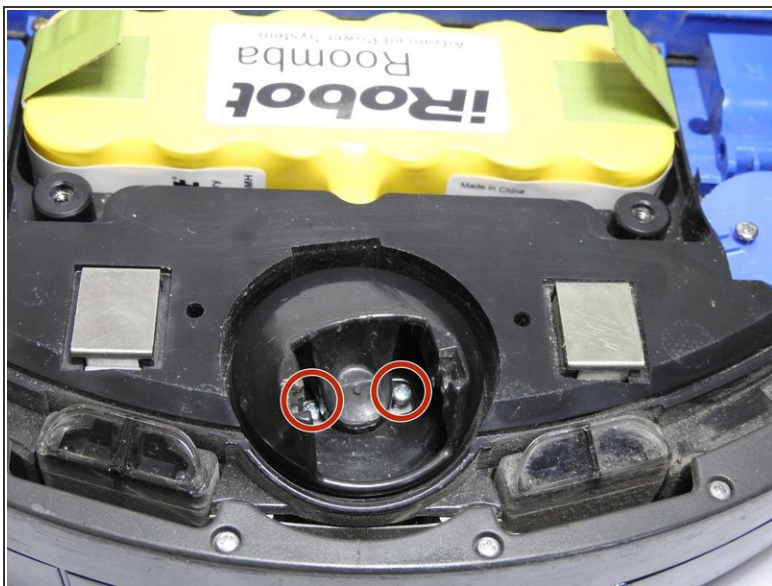
- [Phillips #0 Screwdriver](#) (1)
-

Step 1 — Front Caster Wheel



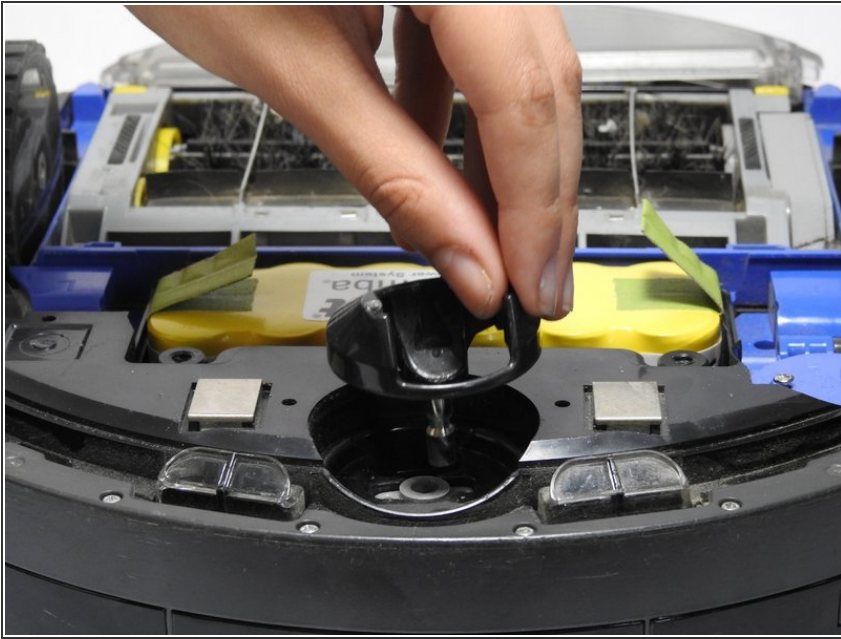
- Pull out front front castor wheel.

Step 2



- Use Phillips #0 screwdriver to remove the two 9.64 mm screws.

Step 3



- Pull out the castor wheel holder and remove it from the device.

To reassemble your device, follow these instructions in reverse order.