



iRobot Roomba 650 Side Brush Motor Replacement

If the motor for your Roomba's side brush needs replacing, give this guide a look.

Written By: Charles Ward



INTRODUCTION

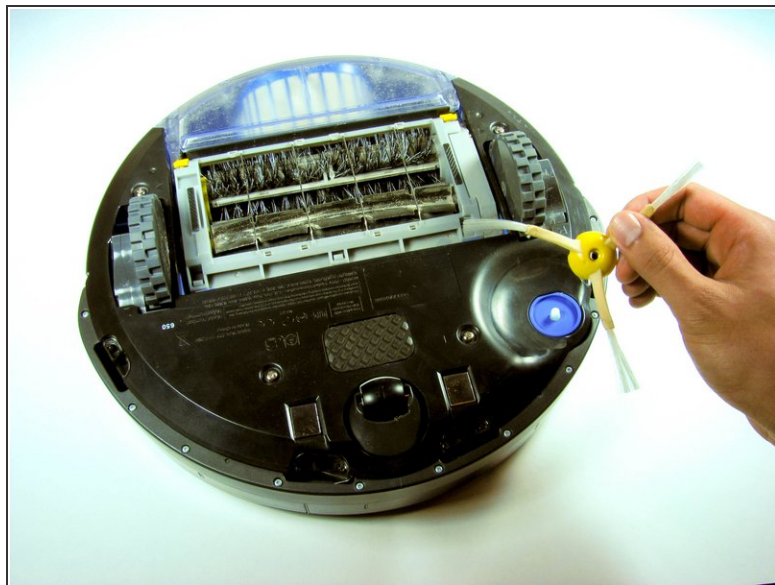
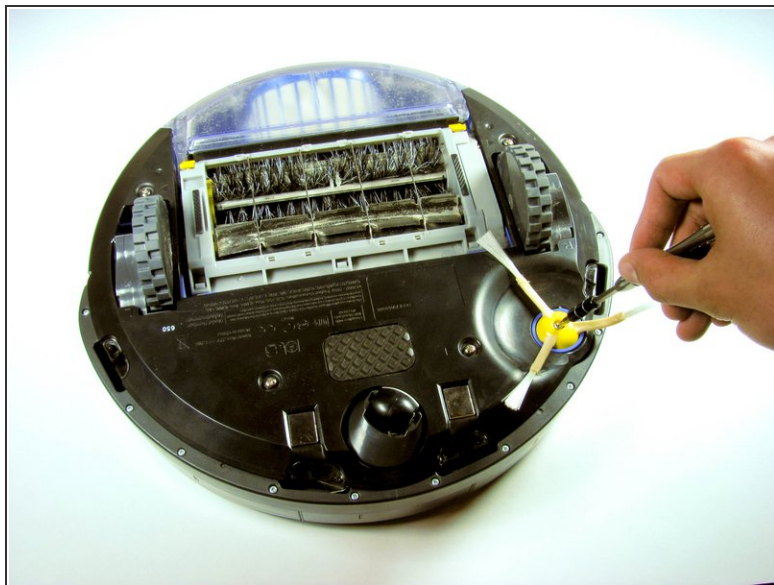
This component is what drives the side brush in action. When the motor is damaged, replacement is needed in order for the side brush to work properly. The side brush motor is housed underneath the bottom panel inside a gearbox.



TOOLS:

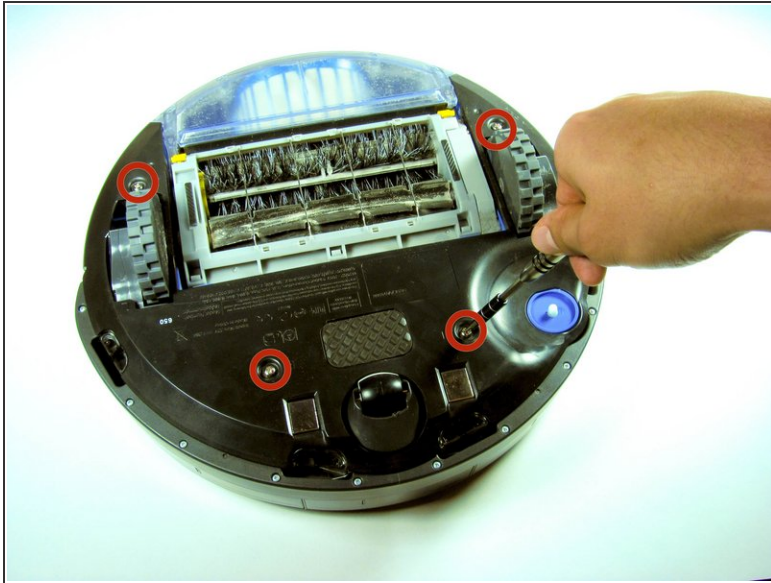
- [Phillips #0 Screwdriver](#) (1)
 - [Flathead 3/32" or 2.5 mm Screwdriver](#) (1)
-

Step 1 — Removing the Side Brush



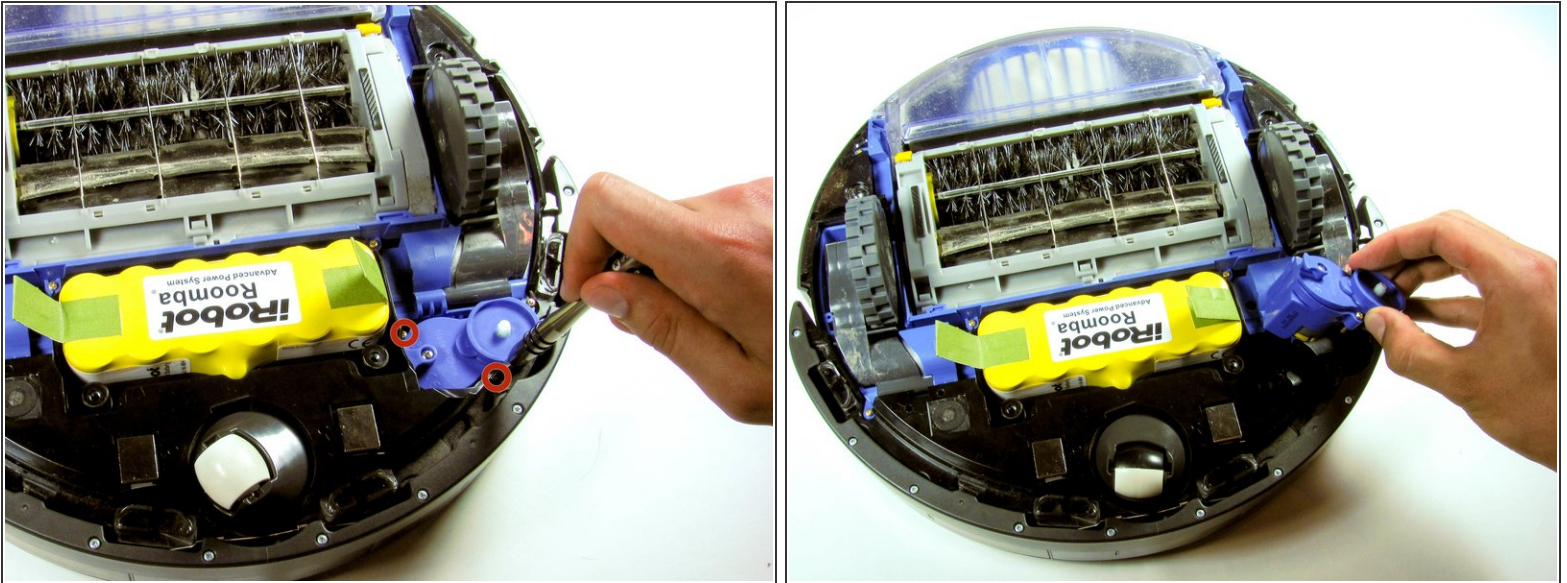
- With the Roomba upside down and turned off, use the Phillip's 02 screwdriver to remove the one 3.5 mm screw from the center of the side-brush.
- Set the screw aside and pull the brush out.

Step 2 — Bottom Panel Removal



- Unscrew the four screws that hold the bottom panel using the Phillips 02 screwdriver.
- ⓘ The screws will not come out of the bottom panel. They were designed to become loose but not be removed. This prevents you from losing them, and prevents the Roomba from sucking them up if they came out during cleaning.
- Once you are sure that all the screws have been loosened as much as possible, then lift the bottom panel up off the Roomba.

Step 3 — Side Brush Motor



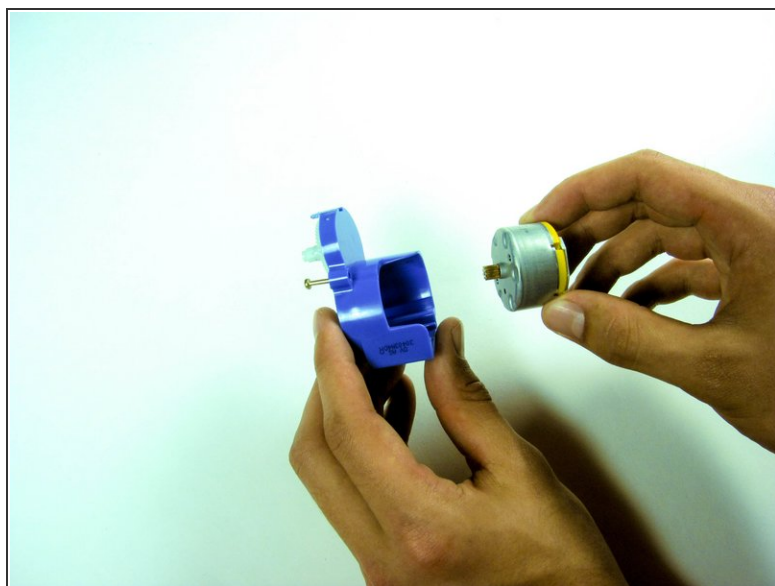
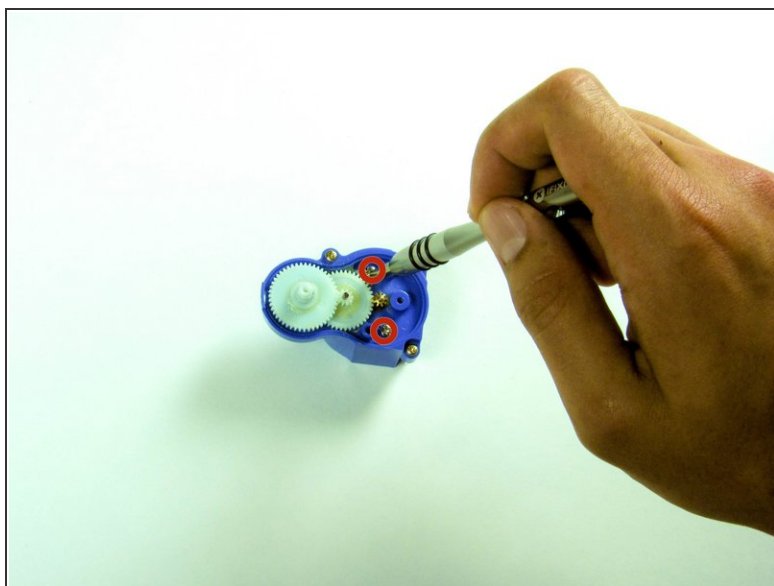
- Locate and loosen the two small screws fastened to the motor housing with the Phillip's 00 Screwdriver. Like the bottom panel screws, these will not come out completely.

Step 4 — Gear Box Cover



- Remove the screw on top of the housing. The small plastic piece should come right off.
- Carefully pry open the gear box by inserting a flat head screwdriver in the slot on the end of the box. *This might be difficult and require some wiggling of the screwdriver.*
- The cover should come right off.

Step 5 — Motor Removal



- Locate and loosen the two screws inside the gearbox with the Phillips 00 Screwdriver. The motor should come right out the bottom.

To reassemble your device, follow these instructions in reverse order.