



iRobot Roomba 805 Battery Replacement

How to replace a iRobot Roomba 805 battery.

Written By: Grady Landers



INTRODUCTION

This guide will go over how to replace the battery in your iRobot Roomba 805. If you plan on putting in a new battery, you can order one from iRobot.



TOOLS:

- [Phillips #0 Screwdriver](#) (1)



PARTS:

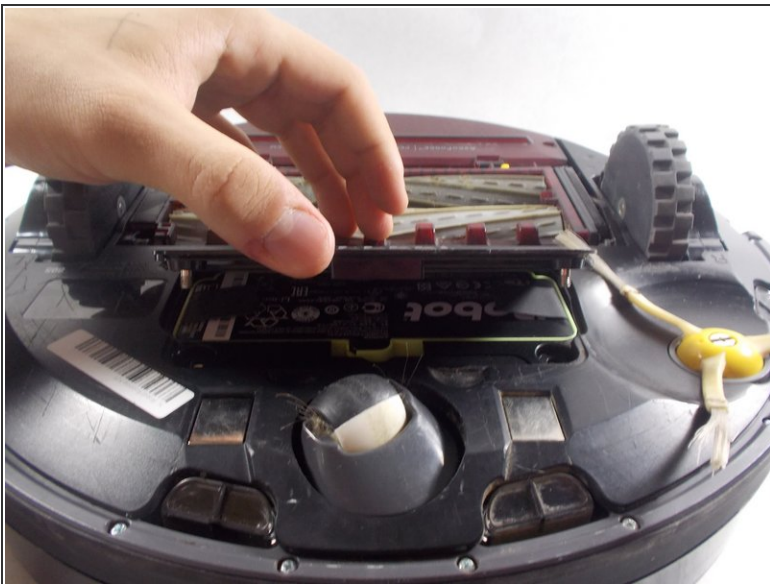
- [iRobot Roomba Replacement Battery for 600, 800, and 900 Series](#) (1)

Step 1 — Battery



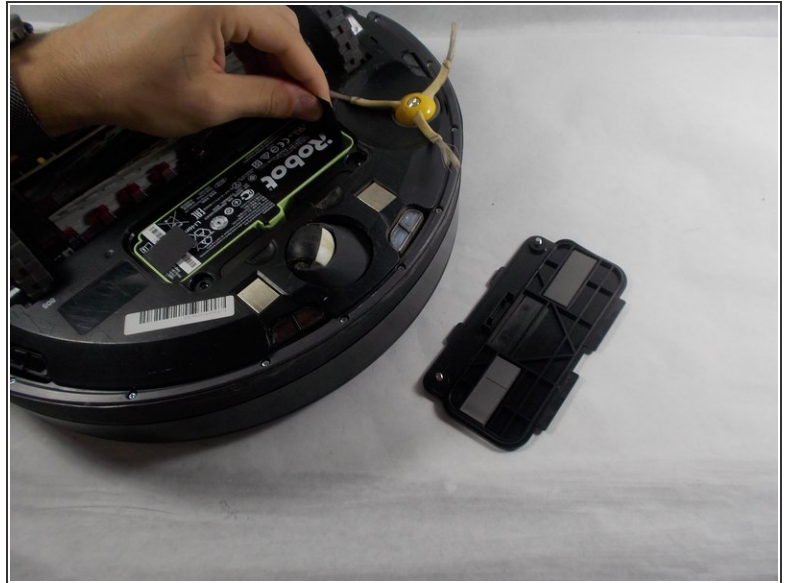
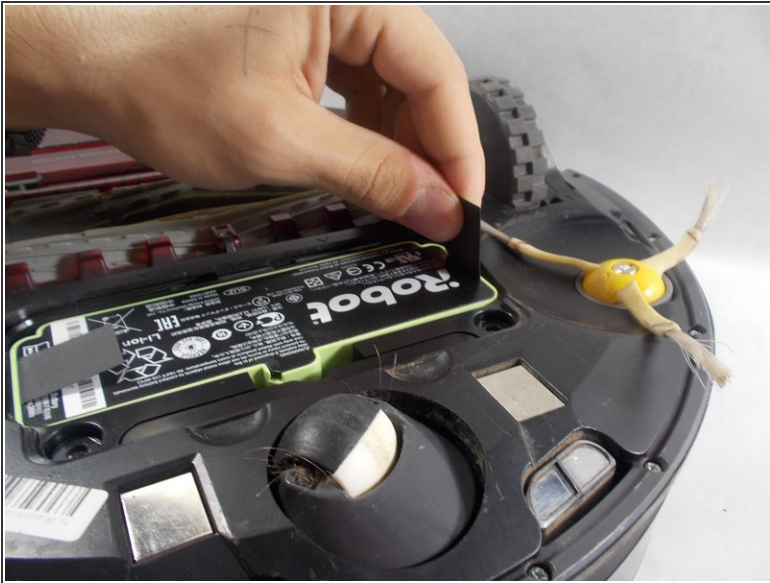
- Unscrew the two captive Phillips #0 screws on the battery panel.

Step 2



- From the front of the panel (where there is an indent) pull the battery panel up and off the bottom of the Roomba.

Step 3



- Grab the battery by the straps on both sides and pull up to remove it from the Roomba.

To reassemble your device, follow these instructions in reverse order.