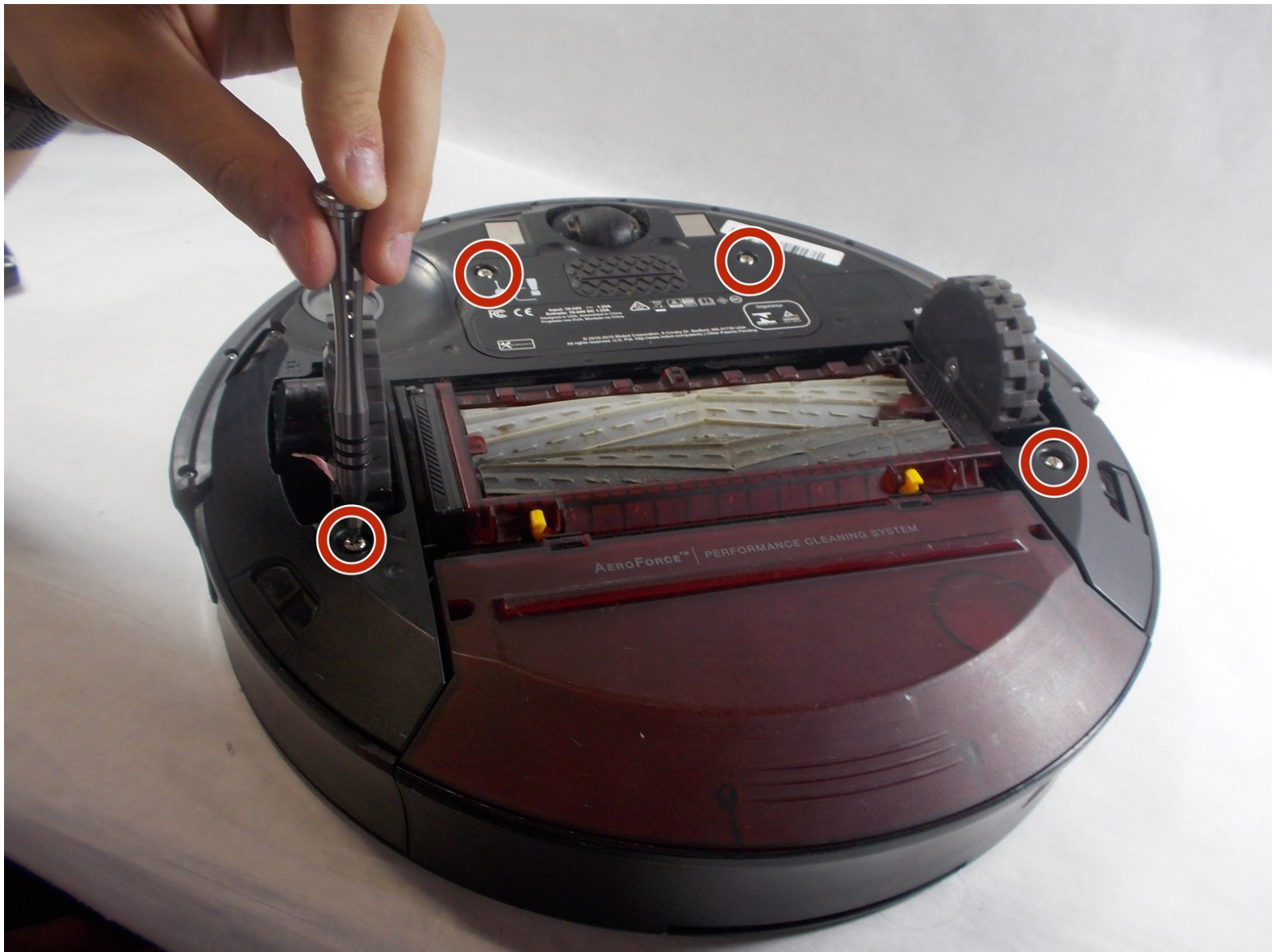




iRobot Roomba 805 Wheel Replacement

This guide explains how to replace a wheel on the iRobot Roomba 805.

Written By: Grady Landers



INTRODUCTION

This guide will go over how to clean or replace the wheels in your iRobot Roomba 805. If you plan on replacing either wheel you can get a new one from iRobot. A Phillips head screwdriver is needed to follow this guide.



TOOLS:

- [Phillips #0 Screwdriver](#) (1)



PARTS:

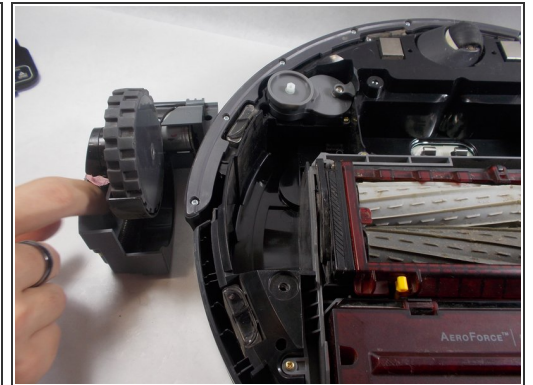
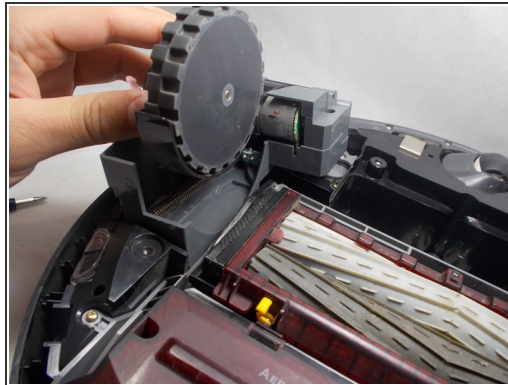
- [Roomba Left Wheel](#) (1)
- [Roomba Right Wheel](#) (1)

Step 1 — Wheel



- Remove the battery panel, then remove the two screws behind the wheels, and lift the bottom panel apart from the rest of the device.

Step 2



- Remove the three screws holding the wheel to the chassis and pull it out.
- ⓘ Keep in mind the two wheels are symmetrical, so you can follow these steps for either.

To reassemble your device, follow these instructions in reverse order.